

MANANA — MAINSHIP



Builder: MAINSHIP

Year Built: 1997

Model: Motor Yacht

Price: PRICE ON APPLICATION

Location: United States

LOA: 40' 0" (12.19m)

Beam: 13' 6" (4.11m)

Max Draft: 3' 5" (1.04m)

Our experienced yacht broker, Andrey Shestakov, will help you choose and buy a yacht that best suits your needs **MANANA — MAINSHIP** from our catalogue. Presently, at Shestakov Yacht Sales Inc., we have a wide variety of yachts available on our sale's list. We also work in close contact with all the big yacht manufacturers from all over the world.

If you would like to buy a yacht **MANANA — MAINSHIP** or would like help answering any questions concerning purchasing, selling or chartering a yacht, please call **+1(954)274-4435**

TABLE OF CONTENTS

TABLE OF CONTENTS	2
SPECIFICATIONS	5
Overview	5
Basic Information	5
Dimensions	5
Speed, Capacities and Weight	5
Accommodations	5
Hull and Deck Information	6
Engine Information	6
DETAILED INFORMATION	7
MAIN DESCRIPTION	7
MAINSHIP WALK THROUGH	7
MAINSHIP ACCOMADATIONS	7
MAINSHIP SALON	7
MAINSHIP GALLEY	7
MAINSHIP DINING	7
MAINSHIP MASTER	8
GUEST STATROOM	8
MAINSHIP HEAD	8
MAINSHIP AUDIO/VISUAL	8
MAINSHIP ELECTRONICS	8
SYSTEM	8
MAINSHIP MECHANICAL	8
MAINSHIP DECK	8
MAINSHIP SAFETY EQUIPMENT	9
MAINSHIP EXCLUSIONS	9
DISCLAIMER	9
Exclusions	9

Disclaimer	9
PHOTOS	10
1) New Main	10
2a) New Bimini	10
2b new bimini	10
2c new bimini	10
1) Main	11
2) Cockpit	11
3) Cockpit 2	11
4) Stb Sidedecks	11
5) Port Sidedecks	12
6) Yanmar 260hp 6LP-DTE	12
7) Stb Salon	12
8) Stb Settee	12
9) Port Convertible Dinette	13
10) Port Galley	13
11) Kenyon Cooktop	13
13) Panasonic Microwave	13
14) Hallway Forward	14
15) Master Stateroom	14
16) Head	14
17) Head 2	14
18) Separate Shower	15
19) Molded Steps to Flybridge	15
20) Helm	15
21) Double Helm Seats	15
22) Port Flybridge Seating	16
23) Stb Flybridge Seating	16
24) Flybridge Coaming Door 2	16

25) Flybridge Coaming Door	16
26) Flybridge Sink	17
27) Bow Sprit	17
29) Kenwood Stereo	17
CONTACTS	18
Contact details	18
Telephones	18
Office hours	18
Address	18

SPECIFICATIONS

Overview

MANANA a 1997 Mainship Sedan Bridge 40 has a spacious interior that includes a full beam salon with two state rooms. A large head with separate shower. Aft is a large cockpit with hatches for engine access, deck door for easy boarding. There are molded steps to the large full bridge, double helm seats, guest seating on Stb and Port. there is a drop down door in the front coaming to give you easy access to the bow from the helm. Manana is powered by twin Yanmar 260hp engines. Kohler 7.5 genset will provide power away from the dock. Clean and ready to go.

Basic Information

Category: Motor Yacht

Sub Category: Flybridge

Model Year: 1997

Year Built: 1997

Country: United States

Fly Bridge: Yes

Dimensions

LOA: 40' 0" (12.19m)

Beam: 13' 6" (4.11m)

Max Draft: 3' 5" (1.04m)

Clearance: 17' 0" (5.18m)

Speed, Capacities and Weight

Water Capacity: 93 Gallons

Holding Tank: 30 Gallons

Fuel Capacity: 310 Gallons

Accommodations

Total Cabins: 2

Hull and Deck Information

Hull Material: Fiberglass

Engine Information

Engines: 2

Manufacturer: Yanmar

Model: 6LP-DTE

Fuel Type: Diesel

DETAILED INFORMATION

MAIN DESCRIPTION

MANANA a 1997 Mainship Sedan Bridge 40 has a spacious interior that includes a full beam salon with two state rooms. A large head with separate shower. Aft is a large cockpit with hatches for engine access, deck door for easy boarding. There are molded steps to the large full bridge, double helm seats, guest seating on Stb and Port. there is a drop down door in the front coaming to give you easy access to the bow from the helm. Manana is powered by twin Yanmar 260hp engines. Kohler 7.5 genset will provide power away from the dock. Clean and ready to go.

MAINSHIP WALK THROUGH

Step aboard Manana onto a molded swim platform. Use the deck door to enter a large cockpit. Side decks lead forward to the bow. Molded steps take up up to the Flybridge. Helm has double seats and guest seating both Stb and Port. Unique Coaming door leads to the bow! From the cockpit enter into the full width salon thru a siding door. U-shaped dinette to port, port galley, walk way on centerline to 2 stateroom and large head.

MAINSHIP ACCOMADATIONS

Manana has two staterooms and a convertible dinette table to accommodate up to 7 people. The main stateroom is a centerline queen forward. Just aft to port is a over/under bunk beds and across the hall way is the head with a separate shower. In the salon is the u-shaped dinette table that converts to a double. To starboard is a single berth.

MAINSHIP SALON

Manana has a full width salon that has a u-shaped dinette table, L-shaped settee, TV and a Stereo. Windows starboard and port provide natural light.

MAINSHIP GALLEY

Manana's galley is forward to port: Round Stainless steel sink Nor-cold Refrigerator Kenyon two burner electric surface unit Panasonic microwave Black and Decker coffee maker

MAINSHIP DINING

In Manana's salon to port there is a large convertible dining table.

MAINSHIP MASTER

Manana's master is a queen on center line forward. Storage both starboard and port. Hanging locker to starboard. Privacy door to the head.

GUEST STATROOM

Manana's guest stateroom is just aft off master to port. You have a over/under bunk beds with a hanging locker.

MAINSHIP HEAD

Manana's Head is located to starboard just aft of the master. She features a sink, Jabsco toilet and a separate shower stall.

MAINSHIP AUDIO/VISUAL

Kenwood Stereo and mounted TV in salon.

MAINSHIP ELECTRONICS

Manana has:VHS: Standard Horizon Quest+ flush mounted at helmGPS: Garmin GPSmap 2010C at helmRadar: Furuno NavNet vx2 at helmAuto Pilot: Simrad AP16 at helmDepth: Autohelm Tridata at helmCompass: Richie 5" Powerdam

SYSTEM

Manan's DC system has 3 group 27 batteries for the engines, genset and house. There is aProNautic 30-amp marine battery charger.AC system is 120 volts powered by two 30amp, 120 volt shore power cables.Two air condition systems both cruise air 16btu's.Three Rule 1500 bilge pumpsKohler 7.5kw

MAINSHIP MECHANICAL

Mamana's is powered by two Yanmar 260hp engines with 1510 hoursKohler 7.5 genset with 1344 hours

MAINSHIP DECK

Manana's has a:Built in swim platformBow PulpDanforth AnchorMolded non-skidSimpson

Lawrence Windlass with helm controls molded steps to flybridge Drop down coaming door from helm

MAINSHIP SAFETY EQUIPMENT

Manana's Safety: Life vest 8 Throwable device Fog bell Horn Swim ladder Navigation lights Anchor light First aid kit

MAINSHIP EXCLUSIONS

Owners personal items: Art work, Tools.

DISCLAIMER

The Company offers the details of this vessel in good faith but cannot guarantee or warrant the accuracy of this information nor warrant the condition of the vessel. A buyer should instruct his agents, or his surveyors, to investigate such details as the buyer desires validated. This vessel is offered subject to prior sale, price change, or withdrawal without notice.

Exclusions

Owner's personal belongings.

Disclaimer

The Company offers the details of this vessel or yacht in good faith but cannot guarantee or warrant the accuracy of this information nor warrant the condition of the vessel. A buyer should instruct his representatives, agents, or his surveyors, to investigate such details as the buyer desires validated. This vessel or yacht is offered subject to prior sale, price change, or withdrawal without notice.

PHOTOS

1) New Main



2a) New Bimini



2b new bimini



2c new bimini



1) Main



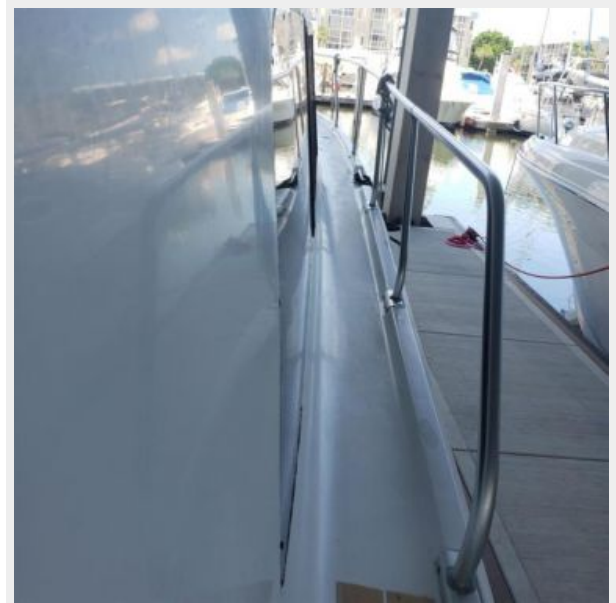
2) Cockpit



3) Cockpit 2



4) Stb Sidedecks



5) Port Sidedecks



6) Yanmar 260hp 6LP-DTE



7) Stb Salon



8) Stb Settee



9) Port Convertible Dinette



10) Port Galley



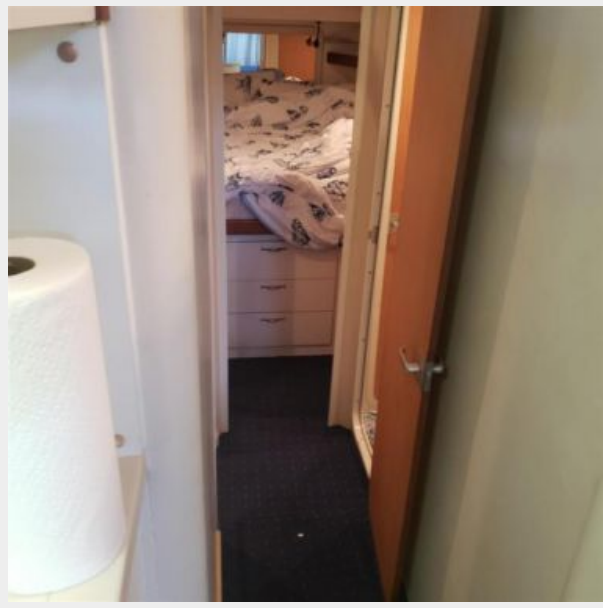
11) Kenyon Cooktop



13) Panasonic Microwave



14) Hallway Forward



15) Master Stateroom



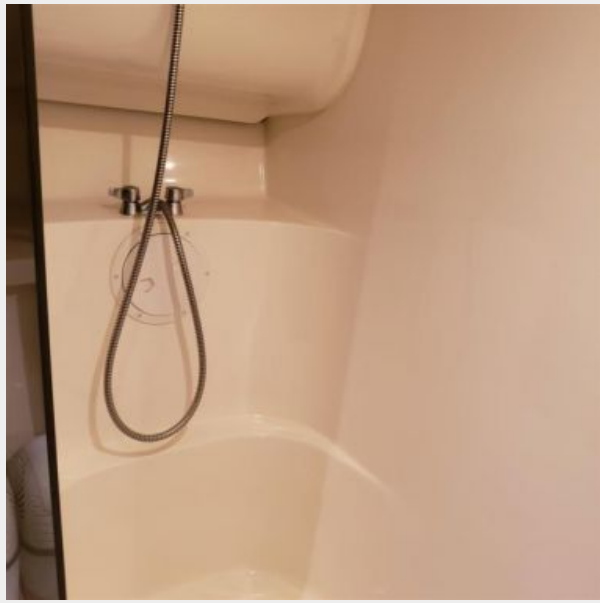
16) Head



17) Head 2



18) Separate Shower



19) Molded Steps to Flybridge



20) Helm



21) Double Helm Seats



22) Port Flybridge Seating



23) Stb Flybridge Seating



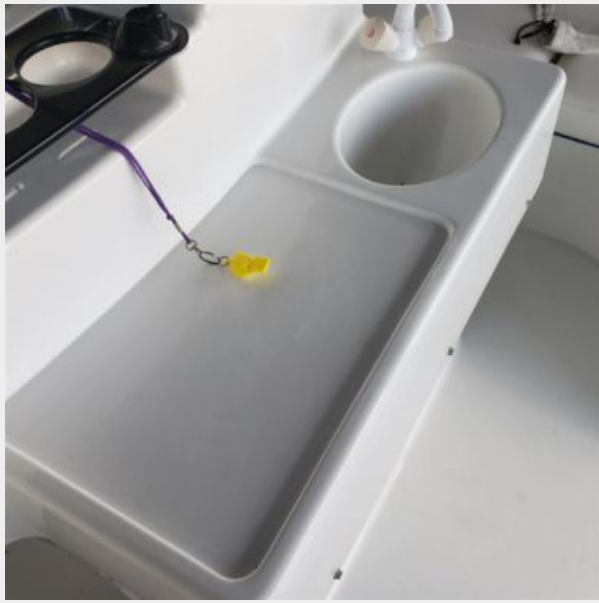
24) Flybridge Coaming Door 2



25) Flybridge Coaming Door



26) Flybridge Sink



27) Bow Sprit



29) Kenwood Stereo



CONTACTS

Andrey Shestakov, leading yacht broker of the sales department of Shestakov Yacht Sales Inc. Shestakov Yacht Sales Inc., the official representative of the Miami/Fort Lauderdale FL headquarters.

Contact details

Email: andrey@shestakovyachtsales.com

Web: shestakovyachtsales.com/en/

Telephones

USA: +1(954)274-4435

Office hours

Monday – Saturday: **9:00 - 21:00** EDT

Sunday: **closed**

Address



Harbour Towne Marina, 850 NE 3rd St,
STE 213, Dania, FL 33004