

## WAYFINDER — MORGAN



**Builder:** MORGAN

**Year Built:** 1983

**Model:** Cruising Ketch

**Price:** PRICE ON APPLICATION

**Location:** United States

**LOA:** 41' 0" (12.50m)

**Beam:** 13' 10" (4.22m)

**Max Draft:** 4' 2" (1.27m)

Our experienced yacht broker, Andrey Shestakov, will help you choose and buy a yacht that best suits your needs **Wayfinder — MORGAN** from our catalogue. Presently, at Shestakov Yacht Sales Inc., we have a wide variety of yachts available on our sale's list. We also work in close contact with all the big yacht manufacturers from all over the world.

If you would like to buy a yacht **Wayfinder — MORGAN** or would like help answering any questions concerning purchasing, selling or chartering a yacht, please call **+1(954)274-4435**

# TABLE OF CONTENTS

TABLE OF CONTENTS	2
SPECIFICATIONS	5
Overview	5
Basic Information	5
Dimensions	5
Speed, Capacities and Weight	5
Accommodations	6
Hull and Deck Information	6
Engine Information	6
DETAILED INFORMATION	7
MAIN DESCRIPTION	7
ACCOMADATIONS	7
ELECTRICAL SYSTEM	7
Electronics	7
SAILS & RIG	8
Galley	8
Mechanical	8
DECK	8
DISCLAIMER	8
Exclusions	8
Disclaimer	9
PHOTOS	10
1 Wayfinder 41' Morgan 1983	10
2	10
3	10
4	10
5	10
6	10

---

7	11
8	11
9	11
10	11
11	11
12	11
13	12
14	12
15	12
16	12
17	12
18	12
19	13
20	13
21	13
22	13
23	13
24	13
25	14
26	14
27	14
28	14
29	14
30	14
31	15
32	15
33	15
34	15
35	15

---

---

36	15
37	16
38	16
39	16
40	16
41	16
42	16
43	17
44	17
45	17
46	17
47	17
48	17
49	18
50	18
51	18
52	18
54	18
53	18
CONTACTS	19
Contact details	19
Telephones	19
Office hours	19
Address	19

---

# SPECIFICATIONS

---

## Overview

---

**1983 MORGAN 416 OUT ISLAND "WAYFINDER"**Wayfinder is the 416 model of the 41 Out Island line. With her ketch sail plan the increased sail area is divided into 3 sails, which makes her easier to manage than having just a large main & genoa. Ketch rigged boats have more options over a wider range of sailing conditions than do sloop rigged boats. Wayfinder has spent most of her past sailing the Caribbean with her previous owner of 20 years. She has been well taken care of, and her maintenance log was conveyed to the current owner and is available onboard.If you are looking for a full keel boat with a solid reputation, Wayfinder has proven to be capable of sailing the islands in comfort & safety.

## Basic Information

---

**Category:** Cruising Ketch

**Sub Category:** Center Cockpit

**Model Year:** 1983

**Year Built:** 1983

**Country:** United States

## Dimensions

---

**LOA:** 41' 0" (12.50m)

**LWL:** 34' 0" (10.36m)

**Beam:** 13' 10" (4.22m)

**Max Draft:** 4' 2" (1.27m)

**Clearance:** 60' 0" (18.29m)

## Speed, Capacities and Weight

---

**Displacement:** 27000 Pounds

**Water Capacity:** 200 Gallons

**Fuel Capacity:** 100 Gallons

---

## Accommodations

---

**Total Cabins:** 2

**Total Heads:** 2

---

## Hull and Deck Information

---

**Hull Material:** Fiberglass

---

## Engine Information

---

**Engines:** 1

**Manufacturer:** Perkins

**Model:** 4 - 154

**Engine Type:** Inboard

**Fuel Type:** Diesel

---

# DETAILED INFORMATION

---

## MAIN DESCRIPTION

---

**1983 MORGAN 416 OUT ISLAND "WAYFINDER"**Wayfinder is the 416 model of the 41 Out Island line. With her ketch sail plan the increased sail area is divided into 3 sails, which makes her easier to manage than having just a large main & genoa. Ketch rigged boats have more options over a wider range of sailing conditions than do sloop rigged boats. Wayfinder has spent most of her past sailing the Caribbean with her previous owner of 20 years. She has been well taken care of, and her maintenance log was conveyed to the current owner and is available onboard.If you are looking for a full keel boat with a solid reputation, Wayfinder has proven to be capable of sailing the islands in comfort & safety.

## ACCOMADATIONS

---

Wayfinder has a deep **center cockpit** that will seat six, and there is access to both the forward salon and her aft cabin directly from the cockpit.Her **master stateroom** is aft and gives you a queen size berth with private electric head & shower. Opening portholes & a large overhead hatch provide light and ventilation. There are hanging lockers and drawers for your gear.Wayfinder's **salon** can be directly accessed from the aft stateroom via a passageway. The salon is quite large and is equipped with : Dinning table / TV / VHF and CD player.There are numerous portholes and overhead hatches providing light and ventilation.Wayfinder's **galley** makes up the aft section of the main salon, and runs across the entire beam of the boat at her widest point.Wayfinder's **forward cabin** has a very generous size v-berth with a large overhead hatch. Ample storage is provided in drawers & hanging lockers. The forward head has two doors, and can be accessed from the salon or the forward cabin. The shower is quite large in the forward head.Wayfinder has a total of five opening deck hatches and 16 opening portholes.

## ELECTRICAL SYSTEM

---

**AC System** :Wayfinder has 30 amp shorepower service with bonding system.NextGen 3.2kw Generator - 840 hours**DC System** :(2) 8D Lead Acid Batteries (May 2020)(1) Group 24 Maintenance Free (May 2020)Parallel SwitchPro Mariner 50 amp ChargerAlternator Power Max 1500watt InverterXantrex Monitor

## Electronics

---

Garmin GPSmap 740Simrad AP24 Autopilot (2014)Simrad RS 35 VHFSimrad AIS(3) Raymarine : Depth/Wind/Trip&SpeedNEMA 2000 BackboneWest Marine VHF (handheld)Sony CD/Receiver w/ Bose SpeakersDanforth Compass

## SAILS & RIG

---

110 % Headsail on a Harken Roller Furler Fully Battened Main Sail / Stackpac new June 2020 Mizzen Sail(2) Lewmar 48 Primary Winches(1) Lewmar 40 Mainsheet Winch(3) Lewmar 16 Secondary/Mast(1) Barient 8P Cunningham

## Galley

---

12 volt Adler Barbour Refrigeration (Dec 2015) Shipmate Stove/Oven (aluminum propane bottle) Deep Double Stainless Steel Sink Manual Water Foot Pump Microwave Cabinets/Drawers and Storage Lockers

## Mechanical

---

Perkins 4-154 Main Engine 4585 hrs (Rear seal replaced April 2020) ZF Transmission / 1" Shaft / 3 Blade Prop (Packing replaced March 2020) Hydraulic Steering System Next Gen 3.2kw Generator 840 hrs Ocean Breeze 16k Air Conditioner March Raw Water Pump Engine Oil & Filters replaced (July 2020) Generator Oil & Filters replaced (June 2020)

## DECK

---

Bottom Painted (June 2020) Simpson-Lawrance Windlass 12volt 35 lb Plow Anchor with chain/rode 15 lb Danforth Anchor with chain/rode West Marine 10.5 RIB w/ 15hp Johnson (3) St. Croix Davits (Tender & Outboard) Tankage : (2) FRP Freshwater Tanks with 12volt West Marine pump & Manual foot pump Atlantic 6 gal Water Heater (2) FRP Fuel Tanks w/ Racor Fuel Filter Electric Raritan Toilet in Master Head (motor replaced June 2020) Manual Raritan Toilet in Fwd Head (pump replaced June 2020) (3) Type B II Fire Extinguishers Signal Flares w/ 12 gauge Pistol (4) Type II Life Preservers First Aid Kit

## DISCLAIMER

---

The Company offers the details of this vessel in good faith but cannot guarantee or warrant the accuracy of this information nor warrant the condition of the vessel. A buyer should instruct his agents, or his surveyors, to investigate such details as the buyer desires validated. This vessel is offered subject to prior sale, price change, or withdrawal without notice.

## Exclusions

---

Owner's personal belongings.



---

## Disclaimer

---

The Company offers the details of this vessel or yacht in good faith but cannot guarantee or warrant the accuracy of this information nor warrant the condition of the vessel. A buyer should instruct his representatives, agents, or his surveyors, to investigate such details as the buyer desires validated. This vessel or yacht is offered subject to prior sale, price change, or withdrawal without notice.

# PHOTOS

1 Wayfinder 41' Morgan 1983



2



3



4



5



6



7



8



9



10



11



12



13



14



15



16



17



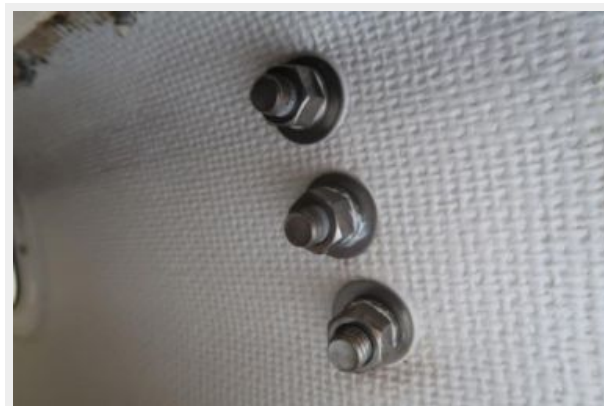
18



19



20



21



22



23



24



25



26



27



28



29



30



31



32



33



34



35



36



37



38



39



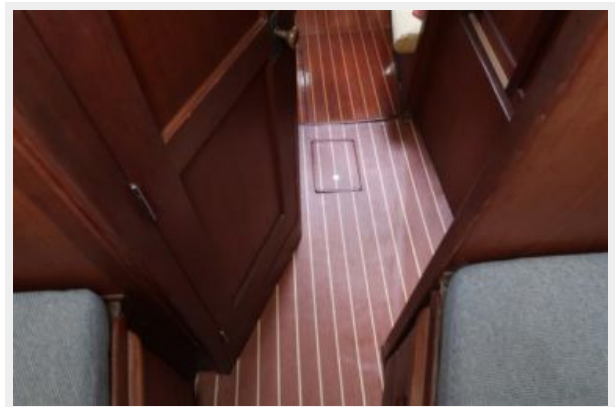
40



41



42





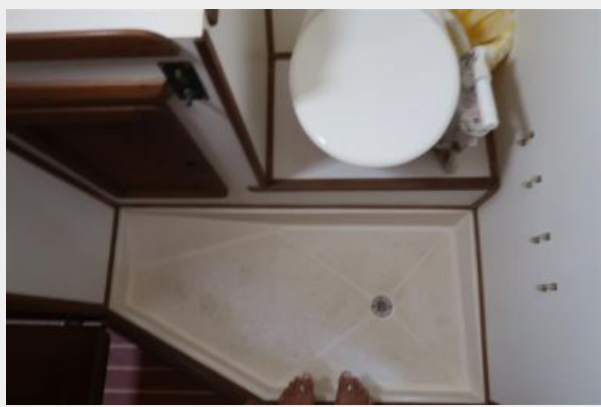
43



44



45



46



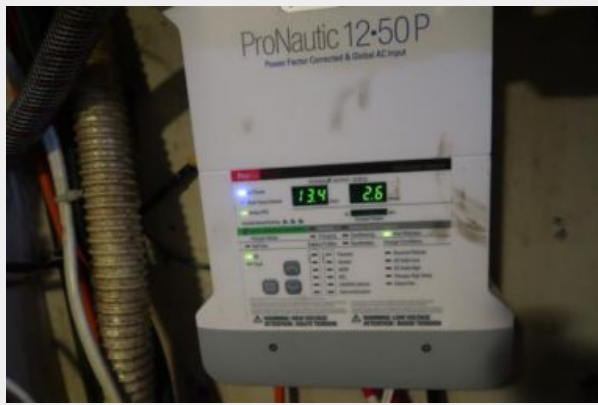
47



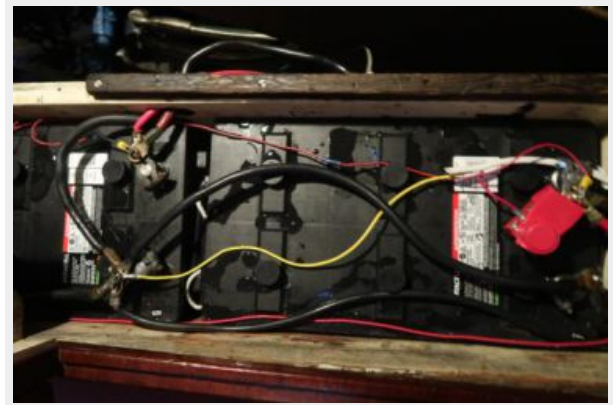
48



49



50



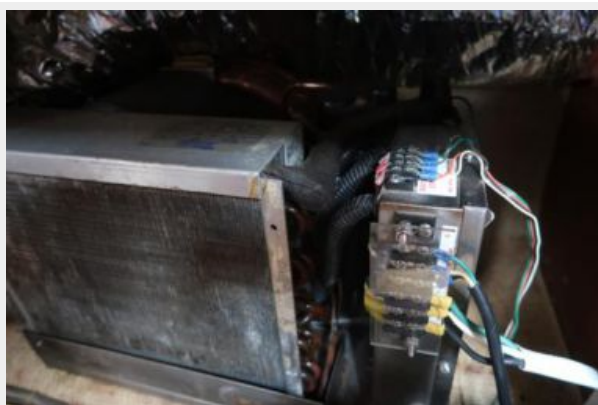
51



52



53



54



# CONTACTS

---

Andrey Shestakov, leading yacht broker of the sales department of Shestakov Yacht Sales Inc. Shestakov Yacht Sales Inc., the official representative of the Miami/Fort Lauderdale FL headquarters.

## Contact details

---

Email: [andrey@shestakovyachtsales.com](mailto:andrey@shestakovyachtsales.com)

Web: [shestakovyachtsales.com/en/](http://shestakovyachtsales.com/en/)

## Telephones

---

USA: +1(954)274-4435

## Office hours

---

Monday – Saturday: **9:00 - 21:00** EDT

Sunday: **closed**

## Address

---



Harbour Towne Marina, 850 NE 3rd St,  
STE 213, Dania, FL 33004