

MENORCA — BOTJE ENSING



Builder: BOTJE ENSING

Year Built: 1961

Model: Motor Yacht

Price: PRICE ON APPLICATION

Location: Spain

LOA: 159' 2" (48.51m)

Beam: 28' 9" (8.75m)

Max Draft: 11' 0" (3.35m)

Cruise Speed: 10 Kts. (12 MPH)

Max Speed: 14 Kts. (16 MPH)

Our experienced yacht broker, Andrey Shestakov, will help you choose and buy a yacht that best suits your needs **MENORCA — BOTJE ENSING** from our catalogue. Presently, at Shestakov Yacht Sales Inc., we have a wide variety of yachts available on our sale's list. We also work in close contact with all the big yacht manufacturers from all over the world.

If you would like to buy a yacht **MENORCA — BOTJE ENSING** or would like help answering any questions concerning purchasing, selling or chartering a yacht, please call **+1(954)274-4435**

TABLE OF CONTENTS

TABLE OF CONTENTS	2
SPECIFICATIONS	3
Basic Information	3
Dimensions	3
Speed, Capacities and Weight	3
Accommodations	3
Hull and Deck Information	3
Engine Information	4
DETAILED INFORMATION	5
MENORCA	5
Exclusions	10
Disclaimer	10
PHOTOS	11
GA - MENORCA	15
CONTACTS	16
Contact details	16
Telephones	16
Office hours	16
Address	16

SPECIFICATIONS

Basic Information

Category: Motor Yacht

Model Year: 1961

Year Built: 1961

Refit Year: 2020

Country: Spain

Dimensions

LOA: 159' 2" (48.51m)

Beam: 28' 9" (8.75m)

Max Draft: 11' 0" (3.35m)

Speed, Capacities and Weight

Cruise Speed: 10 Kts. (12 MPH)

Cruise Speed Range: 2750

Max Speed: 14 Kts. (16 MPH)

Displacement: 1179473.1017 Pounds

Gross Tonnage: 395 Pounds

Water Capacity: 7925.16156 Gallons

Fuel Capacity: 10566.88208 Gallons

Accommodations

Total Cabins: 6

Sleeps: 12

Crew Sleeps: 11

Hull and Deck Information

Hull Material: Steel

Interior Designer: Mare E Terra Studio

Engine Information

Engines: 2

Manufacturer: MAN

Model: 7 V GV30/40

DETAILED INFORMATION

MENORCA

```
#edmiston-espec { font-family: 'Helvetica Neue LT Std', 'Sans'; font-weight: 200; font-style:
normal; text-align: justify; text-justify: inter-word; line-height: 1.5em; color: #444; } #edmiston-
espec table { border-spacing: 0px; border-collapse: collapse; } #edmiston-espec td { text-align:
left; vertical-align: top; padding: 0px; margin: 0px; line-height: 1.5em; } #edmiston-espec th { text-
align: left; vertical-align: top; padding: 0px; margin: 0px; width: 5cm; } #edmiston-espec h1 { font-
family: 'Times New Roman','Serif'; color: #DB001E; } #edmiston-espec h2 { font-family: 'Times
New Roman','Serif'; color: #DB001E; } #edmiston-espec h3 { font-family: 'Times New
Roman','Serif'; color: #222; } #edmiston-espec ul { list-style: none; margin: 0; padding: 0 0 0 20px; }
#edmiston-espec li.bullet { list-style: disc; }
```

1. MAIN CHARACTERISTICS

TYPE	◦ Displacement Motor Yacht
MODEL	◦ Canoe Stern
BUILDER	◦ Botje Ensing & Co, Groningen, NL
INTERIOR DESIGN	◦ Mare E Terra Studio
YEAR	◦ 1961
REFIT	◦ 2020
CLASSIFICATION	◦ RINA
CONSTRUCTION	◦ Steel
CREW	◦ 11
FLAG	◦ Malta
ENGINES	◦ 2 x 1,020Hp MAN 7V GV30 /40
GT	◦ 395
DISPLACEMENT	◦ 535 tons

2. DIMENSIONS

LOA	◦ 48.51m / 159'1"
BEAM	◦ 8.75m / 28'8"
DRAFT	◦ 3.35m / 10'11"

3. SPEED & RANGE UNDER POWER

MAXIMUM SPEED	◦ 14 knots
CRUISING SPEED	◦ 10-12 knots
FUEL CONSUMPTION	◦ 5,000 litres /day
RANGE	◦ 2,750nm @ cruising speed

4. CAPACITIES

ACCOMMODATION	◦ 12 x Guests in 6 cabins
----------------------	---------------------------

CREW	◦ 11 x Crew
FUEL	◦ 40,000 liters / 10,567 US gallons
FRESH WATER	◦ 30,000 litres / 7,925 US gallons
LUBE OIL	◦ 3,000 litres / 792 US gallons
DIRTY LUBE OIL	◦ 4,000 litres / 1,056 US gallons
GREY WATER	◦ 3,500 litres / 924 US gallons
BLACK WATER	◦ 500 litres / 132 US gallons

5. ACCOMMODATION

SALOON	◦ Floor to ceiling windows, Sofas, ◦ Piano, Large TV system,
CABINS	◦ All suites – cabins have en-suite facilities, huge shower rooms, fully air-conditioning TV screens and iPod bases (Bose)
CABIN	◦ Master: 230 ft2
DIMENSIONS	◦ VIP: 230 ft2 ◦ Cabins 1-2: 230 ft2 ◦ Cabins 3-4: 200 ft2
GALLEY	◦ Yes (Bar next to dining area) ◦ 2 x Cabins with 3 berths each
CREW AREA	◦ 2 x Cabins with 2 berths each ◦ 1 x Captain's cabin with shower, TV ◦ Crew mess with galley and TV
SUNDECK	◦ Sunbathing area next to the Jacuzzi; ◦ watching movies on outdoor cinema; ◦ equipped with Dolby surround sound

6. MECHANICAL EQUIPMENT

ENGINES	◦ 2 x 1,020Hp MAN 7 V GV30/40
ENGINE HOURS	◦ Totally overhauled 2017
GEARBOX	◦ Direct
RATIO COMPRESSION	◦ 16:1
PROPULSION	◦ 2
STABILISERS	◦ Vosper System
BOWTHRUSTER	◦ Yes
GENERATORS	◦ 2 x 225kW Volvo ◦ 1 x 100kW Fiat EM/CY
GENERATOR HOURS	◦ Complete rebuild 2020
ELECTRICITY	◦ 380 / 220V
BATTERIES	◦ Close Type
MAIN ENGINE START	◦ By Air
SERVICE	◦ Yes

- GENERATOR START** ◦ Yes
- CHARGERS** ◦ Yes
- COVERTERS** ◦ Yes
- EMERGENCY** ◦ Yes
- HYDRAULICS** ◦ Yes
- SHORE POWER** ◦ 380
- TOILET SYSTEM** ◦ Yes
- AIR CONDITIONING** ◦ 9,600m3 / hour
- AIR COMPRESSOR** ◦ Yes
- WATER SYSTEM** ◦ Yes
- FUEL SEPARATOR** ◦ Yes

7. NAVIGATION & COMMUNICATION EQUIPMENT

- MAGNETIC COMPASS** ◦ Yes
- GYRO COMPASS** ◦ Yes
- AUTOMATIC PILOT** ◦ Yes
- ECHO SOUNDER** ◦ Yes
- RADAR** ◦ Yes
- TRANSPONDER** ◦ Yes
- DGPS** ◦ Yes
- CHARTS** ◦ Yes
- NAVTEX** ◦ Yes
- WEATHER FAX** ◦ Yes
- LOG** ◦ Yes
- SEARCHLIGHTS** ◦ Yes
- WIND INSTRUMENTS** ◦ Yes
- COMMUNICATION** ◦ VHF and WiFi

8. DECK EQUIPMENT

- ANCHORS** ◦ Yes
- ANCHOR CHAINS** ◦ Yes
- BOAT CRANE** ◦ Yes
- PASSERELLE** ◦ Yes
- POOL/JACUZZI** ◦ Yes
- SWIMMING PLATFORM** ◦ Yes
- OTHER** ◦ Lounging area
- Dining area

9. ENTERTAINMENT EQUIPMENT

- GENERAL** ◦ All public areas equipped with Sonos
- System Dolby Surround sound on deck

- Outdoor cinema
 - Sonos system
 - Satellite TV
 - Playstation
 - Piano
 - WiFi
- MAIN SALOON**
- DINING**
 - Sonos system
 - WiFi
- SEATING AFT DECK**
 - Sonos system
 - WiFi
- SUNDECK**
 - Sonos system
 - WiFi
- OWNER'S CABIN**
 - iPod dock
 - Satellite TV
 - WiFi
- VIP CABIN**
 - iPod dock
 - Satellite TV
 - WiFi
- GUEST CABINS**
 - iPod dock
 - TV
- CAPTAIN'S CABIN**
 - iPod dock
 - TV
- OFFICE EQUIPMENT/ INTERNET**
 - PC / Printer & Fax /Copier -WiFi
- CREW MESS**
 - TV
- 10. GALLEY & LAUNDRY EQUIPMENT
 - BAR**
 - Bar with ice maker
 - GALLEY**
 - Professional oven and cooking devices
 - Large cold quarter
 - Barbecue plate, etc
 - Washing Machine
 - CREW QUARTERS**
 - Dryer
 - Galley
 - Washing Machine
 - LAUNDRY - GUESTS (200 FT²)**
 - Dryer
 - Sheet Ironing System
- 11. TENDERS & WATERSPORTS EQUIPMENT
 - TENDERS
 - 1 x 5.50m Rib Zodiac with 70 BHP 4 Stroke Suzuki outboard
 - 1 x 8.5m Seawater Mercury with 300Hp (New 2020)
 - WATER SPORTS
 - 3 x 2 Persons Jet Ski Seadoo

- 1 x Paddle board

12. COMMENTS

MENORCA is a custom motor yacht built by the Dutch shipyard Botje Ensing in 1961 for the Baron Allard, she was previously named “Zurga” and “Christina”. During her Mediterranean career this spectacular yacht hosted numerous royals and celebrities.

Rebuilt in 2004, and last refitted in 2020, she now boasts a completely new interior and deck set up by French company Mare e Terra. Her new interior design has a Hamptons style elegant flair whilst her versatile 6 cabin layout makes her particularly suitable for large number of guests.

MENORCA also offers enormous spaces on deck complete with Jacuzzi and an open air cinema. Her elegant lines combined with her tasteful interior refurbishment and continued technical maintenance ensure MENORCA is ready for her next owner in excellent condition.

13. REFIT NOTES

- 2020:
 - Generator and alternator rebuilt
 - New vacuum pumps
 - Shafts & propellers overhauled (5 years class survey)
 - Overhauled windlass
- 2018:
 - Alterations made to the generator exhaust pipe portside to reduce noise over the sundeck when at anchor
 - Maintenance of the used-water treatment system
 - Complete antifouling done
 - Maintenance of the cooling systems and replacement of one of the two A/C plants
 - General maintenance of the electric system on board
 - Repaint of the hull and superstructure and application of anticorrosion treatment
 - General maintenance of the air-conditioning system
 - Improvements made to the sound system on the Sundeck
 - Maintenance of the electronic navigation system (radars and gyrocompass)
 - Maintenance of the windlass and crane
 - Maintenance of the rudder
 - Maintenance of the stern post and propeller lines
 - Maintenance of the ventilation and air extraction system
- 2017:
 - Fully refitted by MARE E TERRA (luxury boutique hotel developers)
 - All engine components overhauled Exterior paint and deck to new standards
 - Interior fully redesigned
 - All furniture, fixtures, and equipment as well as Art carefully selected
 - Hifi and video system new
- 2004:
 - Refit managed and supervised by refit specialists Titan Brokerage Corporation

(supervisors and refit managers of the legendary M/Y Christina O)

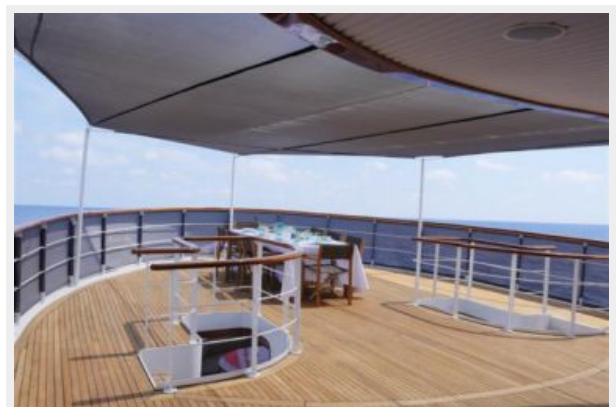
Exclusions

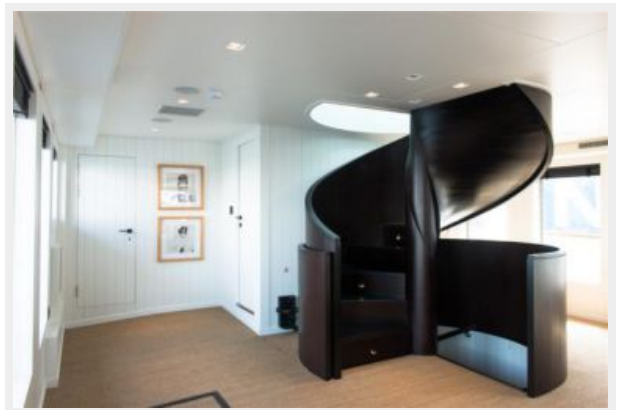
Owner's personal belongings.

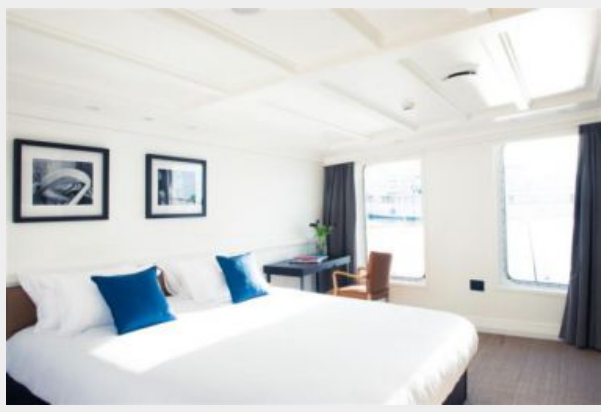
Disclaimer

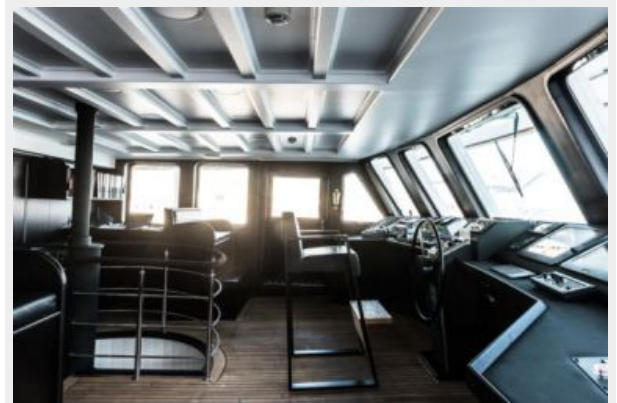
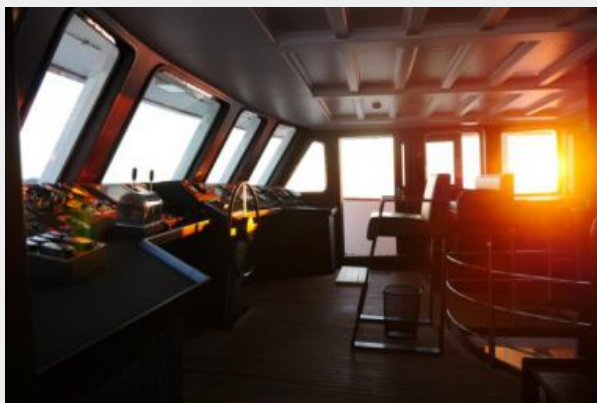
The Company offers the details of this vessel or yacht in good faith but cannot guarantee or warrant the accuracy of this information nor warrant the condition of the vessel. A buyer should instruct his representatives, agents, or his surveyors, to investigate such details as the buyer desires validated. This vessel or yacht is offered subject to prior sale, price change, or withdrawal without notice.

PHOTOS

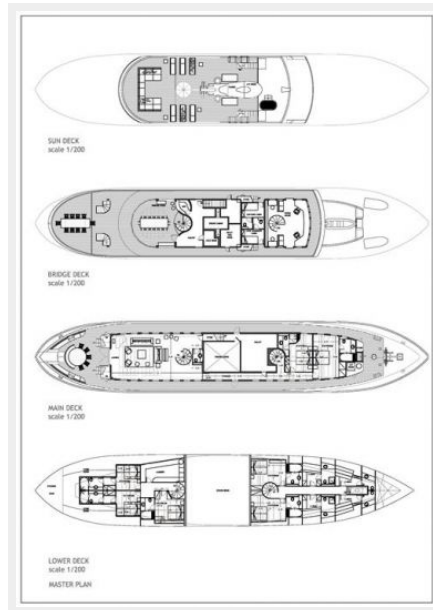








GA - MENORCA



CONTACTS

Andrey Shestakov, leading yacht broker of the sales department of Shestakov Yacht Sales Inc. Shestakov Yacht Sales Inc., the official representative of the Miami/Fort Lauderdale FL headquarters.

Contact details

Email: andrey@shestakovyachtsales.com

Web: shestakovyachtsales.com/en/

Telephones

USA: +1(954)274-4435

Office hours

Monday – Saturday: **9:00 - 21:00** EDT

Sunday: **closed**

Address



Harbour Towne Marina, 850 NE 3rd St,
STE 213, Dania, FL 33004