

## WILD THING — CATALINA



**Судостроитель:** CATALINA

**Год постройки:** 1984

**Модель:** Sloop

**Цена:** **ЦЕНА ЯХТЫ ПО ЗАПРОСУ**

**Местонахождение:** United States

**Длина общая:** 36' 0" (10.97m)

**Ширина:** 11' 11" (3.63m)

**Макс. осадка:** 4' 5" (1.35m)

**Крейс. скорость:** 7 Kts. (8 MPH)

Купить **Wild Thing — CATALINA** а также выбрать подходящую вам яхту из нашего каталога яхт вам поможет опытный яхтенный брокер Андрей Шестаков. На сегодняшний день компания **Shestakov Yacht Sales Inc.** имеет большое количество яхт в **собственном списке продаж**, а также тесно сотрудничает со всеми крупными яхтенными производителями по всему миру.

Для того чтобы купить яхту **Wild Thing — CATALINA** а также проконсультироваться по любому вопросу связанному с покупкой, продажей, чартером яхт позвоните по телефону **+7(918)465-66-44**.

# ОГЛАВЛЕНИЕ

ОГЛАВЛЕНИЕ	2
ХАРАКТЕРИСТИКИ	5
Обзор	5
Основная информация	5
Размеры	5
Скорость, вместимость и масса	5
Размещение	5
Корпус и палуба	5
Информация о двигателе	6
ПОДРОБНОЕ ОПИСАНИЕ	7
MAIN DESCRIPTION	7
CATALINA WALKTHROUGH	7
CATALINA SALON	7
CATALINA ACCOMADATIONS	7
CATALINA GALLEY	7
CATALINA DINING	7
CATALINA MASTER STATE ROOM	8
CATALINA GUEST STATEROOM	8
CATALINA ELECTRONICS	8
CATALINA ELECTRICAL	8
CATALN SAILS	8
CATALINA DECK	8
CATALINA ENGINE	8
CATALINA HEAD	9
CATALINA EXCLUSIONS	9
DISCLAIMER	9
Исключения	9
Отказ от ответственности	9

ФОТОГРАФИИ	10
1 Wild Thing 1984 36' Catalina	10
2. Main 2	10
3. Main 3	10
4. Helm	10
5. Raymarine 4000+ Autopilot	11
6. Raymarine Map A65	11
7. Ritchie Compass	11
8. Port Cabin Top	11
10. Sailing	12
9. Main Traveler	12
11. Galley	12
12. Galley 2	12
13. Force 10 2 burner stove	13
14. Stb Salon	13
15. Convertable Dinette	13
16. Convertable Stb Berth	13
17. Convertable Settee	14
18. Port Salon Storage	14
20. V-Berth	14
19. Quarter Berth	14
21. Bulova Barometer	15
22. Jabsco Head	15
23. SMX Air Condition	15
24. Electrical Panel	15
25. Battery Monitor	16
26. Boss Marine Stereo	16
27. Chain Locker	16
28. Manuel Bige Pump	16

---

29. Companion Way	17
30. Steering Quadraunt	17
32. Universal Diesel	17
33. Universal 25hp	17
34. Engine hour meter	18
35. Dripless Shaft	18
<b>КОНТАКТЫ</b>	<b>19</b>
Контактная информация	19
Телефоны	19
Время работы	19
Адрес	19

# ХАРАКТЕРИСТИКИ

## Обзор

Wild Thing is a well maintained Catalina 36. One of Catalina's most popular boats. Plenty of room for cruising with 2 cabins, 2 convertible sleeping berths and 1 head. Wild Thing has a large open cockpit for you cruising comfort. Check full specs for several recent updates starting in 2016 up to 2020. Owner has moved up to a bigger vessel and will consider all offers!

## Основная информация

Тип судна: Sloop

Модельный год: 1984

Год постройки: 1984

Страна: United States

## Размеры

Длина общая: 36' 0" (10.97m)

Ширина: 11' 11" (3.63m)

Макс. осадка: 4' 5" (1.35m)

## Скорость, вместимость и масса

Крейс. скорость: 7 Kts. (8 MPH)

Вместимость воды: 48 Gallons

Вместимость сточного бака: 20 Gallons

Объем топливного бака: 32 Gallons

## Размещение

Всего кают: 2

Всего коек: 4

Всего ком. состава: 1

## Корпус и палуба

Материал корпуса: Fiberglass

## Информация о двигателе

---

**Двигатели:** 1

**Производитель:** Universal

**Модель:** M25

**Тип двигателя:** Inboard

**Тип топлива:** Diesel

---

# ПОДРОБНОЕ ОПИСАНИЕ

---

## MAIN DESCRIPTION

---

Wild Thing is a well maintained Catalina 36. One of Catalina's most popular boats. Plenty of room for cruising with 2 cabins, 2 convertible sleeping berths and 1 head. Wild Thing has a large open cockpit for you cruising comfort. Check full specs for several recent updates starting in 2016 up to 2020. Owner has moved up to a bigger vessel and will consider all offers!

## CATALINA WALKTHROUGH

---

Enter Wild Things boarding gates to a large cockpit, A center line companion way leads down too a roomy salon. A large-L shaped galley is to port, u-shaped settee is just forward. Across to Starboard is Nav. station with convertible settee forward. Good storage on both starboard and port. The head is to port forward. The V-berth is forward and the double berth is aft too starboard.

## CATALINA SALON

---

The salon is big and open with 2 convertible settee's to port and starboard. Storage is under and behind both settee's. Upholstery redone including replacing marine foam in 2016 Salon Teak and Holly floor replaced in 2016 Sea Dog cabin lights in 2018 All lights on boat replaced with LED's in 2018 Salon tables replaced with Maple tops and Teak fiddles in 2020 Fire Extinguisher replaced in 2020

## CATALINA ACCOMADATIONS

---

Wild Thing has a v-berth forward with lockers, there are 2 convertible settee's in the salon and there is a large quarter berth aft to starboard with storage lockers.

## CATALINA GALLEY

---

Wild Thing has a L-shaped galley is to port. Has a double SS sink, top loading refrigerator, Force 10 - 2 burner with stove . Storage for your galley needs and goods Galley Cabinet under sink was replaced 2020

## CATALINA DINING

---

Wild Thing has two areas to dine. There is a u-shaped settee to port in the salon and there is small table in the cockpit.

---

## CATALINA MASTER STATE ROOM

---

Wild Thing master is a large double berth in the rear starboard quarter that slides under the cockpit. Hanging locker and storage with a slider privacy curtain.

---

## CATALINA GUEST STATEROOM

---

Wild Thing has a large V-berth forward with storage and a hanging locker. Hatch over head for ventilation.

---

## CATALINA ELECTRONICS

---

Wild Thing has a Raymarine A65 map Raytheon 4000+ Auto Pilot at the helm. ICOM VHF with speakerGarman Echo Map GPS chartplotter at Nav station

---

## CATALINA ELECTRICAL

---

Wild Thing has a electric power panel at the nav station. She has 30 am shore power and DC power available. There is SMX air conditioning with digital controls. All light are new LED's Balmar Smartguage battery monitoring system in 2019Charles industries battery charger in 2019Hubbel receptical and shore power cord 2019Bilge pump 1100gph in 2019

---

## CATALN SAILS

---

North 135 genoa with sunbrell cover in 2018Main sail with coverRoller furling

---

## CATALINA DECK

---

Petit Barrier coat in 2016Trinidad bottom paint in 2016New Bimini, hatch covers, mainsail cover and helm cover in 2016New Stem head fitting in 2017Adjustable Boomvang in 2017Roller Furling systemDutchman flaking system2 Lewman 48 winches2 Lewman 16 winchesGarhauer traveler in 2017Garhauer jib cars in 2017Garhuaer Line stopsSpinnaker pole Standing rigging has been inspected New Standard running rigging with life lines in 2017Edson wheel Edison Steering quadrant assembly was replaced in 2018Bow PulpitAnchor with 40'of chain on 100' of rode in 2018

---

## CATALINA ENGINE

---

Universal Model M25 with 225 hoursEngine is serviced regularlyMotor mounts in 2018Water pump un 2018Fuel pump in 2018 Racor in 2018 Belmar serpentine belt in 2019 Exhust hose in



---

2019 Fuel and oil hose's in 2019

## CATALINA HEAD

---

Head is forward to Port Jabsco head installed in 2017 replaced Mascerator in 2018 replaced water pump in 2018

## CATALINA EXCLUSIONS

---

Owners exclusions include personal items, tools and art work.

## DISCLAIMER

---

The Company offers the details of this vessel in good faith but cannot guarantee or warrant the accuracy of this information nor warrant the condition of the vessel. A buyer should instruct his agents, or his surveyors, to investigate such details as the buyer desires validated. This vessel is offered subject to prior sale, price change, or withdrawal without notice.

## Исключения

---

При продаже яхты исключаются личные вещи владельца.

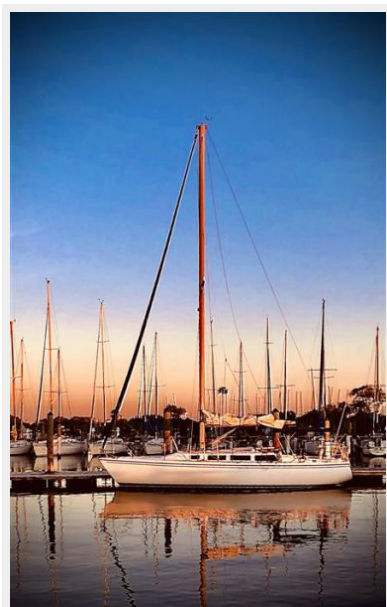
## Отказ от ответственности

---

Компания предоставляет описание судна или яхты добросовестно, но не может гарантировать точность этой информации, а также не ручается за техническое состояние. Покупатель должен проинструктировать своих агентов или оценщиков исследовать представленную информацию более подробно, по собственному желанию. Продажа судна или яхты, изменение цены или снятие с продажи будет происходить без предварительного уведомления.

# ФОТОГРАФИИ

1 Wild Thing 1984 36' Catalina



2. Main 2



3. Main 3



4. Helm



### 5. Raymarine 4000+ Autopilot



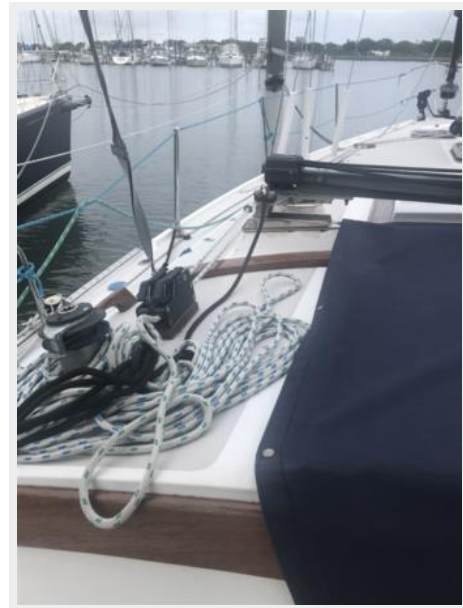
### 6. Raymarine Map A65



### 7. Ritchie Compass



### 8. Port Cabin Top



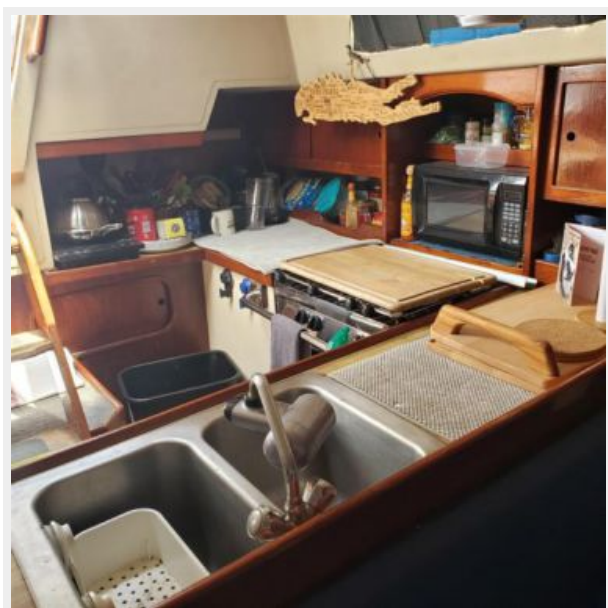
9. Main Traveler



10. Sailing



11. Galley



12. Galley 2



13. Force 10 2 burner stove



14. Stb Salon



15. Convertable Dinette



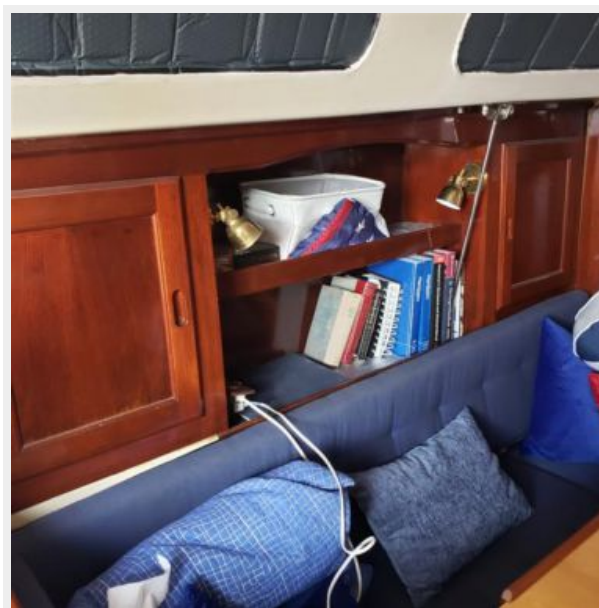
16. Convertable Stb Berth



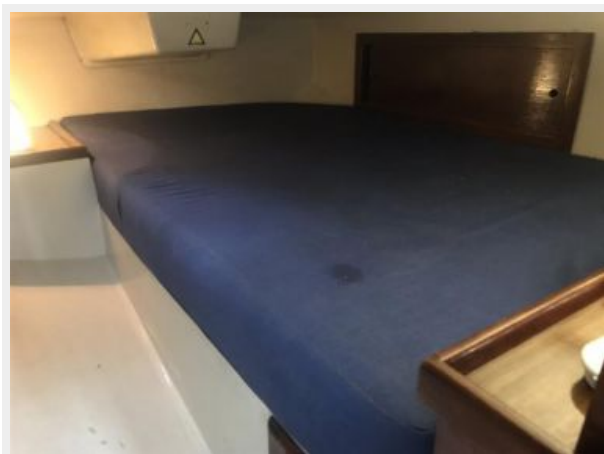
17. Convertible Settee



18. Port Salon Storage



19. Quarter Berth



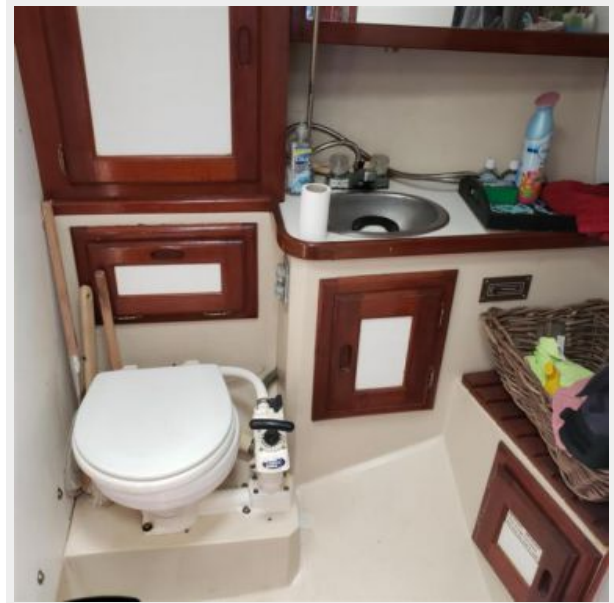
20. V-Berth



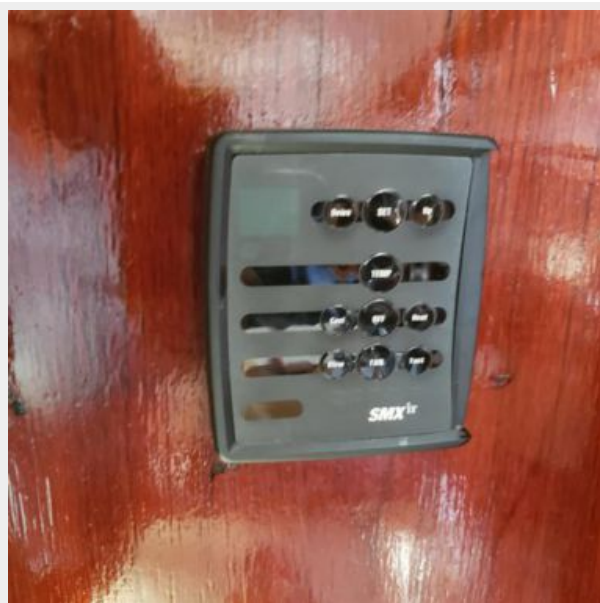
21. Bulova Barometer



22. Jabsco Head



23. SMX Air Condition



24. Electrical Panel



### 25. Battery Monitor



### 26. Boss Marine Stereo



### 27. Chain Locker



### 28. Manuel Bige Pump





### 29. Companion Way



### 30. Steering Quadraunt



### 32. Universal Diesel



### 33. Universal 25hp



### 34. Engine hour meter



### 35. Dripless Shaft



# КОНТАКТЫ

---

Андрей Шестаков (Andrey Shestakov) – ведущий яхтенный брокер отдела продаж яхт и судов компании Shestakov Yacht Sales Inc. Официальный представитель Shestakov Yacht Sales Inc. для русскоговорящих клиентов в центральном офисе компании в Майами/Форт Лодердейл/Флорида/США.

## Контактная информация

---

Email: [andrey@shestakovyachtsales.com](mailto:andrey@shestakovyachtsales.com)

Web: [shestakovyachtsales.com](http://shestakovyachtsales.com)

## Телефоны

---

Краснодарский край: **+7(918)465-66-44**

США, Майами, Флорида: **+1(954)274-4435**

## Время работы

---

Понедельник – Суббота: **9:00 - 21:00**  
EDT

Воскресенье: **Закрито**

## Адрес

---



Harbour Towne Marina, 850 NE 3rd St,  
STE 213, Dania, FL 33004