

KABIR 130S STABILIZED WITHOUT TAKING — OVERMARINE GROUP



Builder: [Overmarine Group](#)

Year Built: 2007

Model: Motor Yacht

Price: PRICE ON APPLICATION

Location: United States

LOA: 130' 0" (39.62m)

Beam: 15' 6" (4.72m)

Max Draft: 6' 5" (1.96m)

Max Speed: 32 Kts. (37 MPH)

Our experienced yacht broker, Andrey Shestakov, will help you choose and buy a yacht that best suits your needs **Kabir 130s Stabilized without taking away from performance — Overmarine Group** from our catalogue. Presently, at **Shestakov Yacht Sales Inc.**, we have a wide variety of yachts available on our sale's list. We also work in close contact with all the big yacht manufacturers from all over the world.

If you would like to buy a yacht **Kabir 130s Stabilized without taking away from performance — Overmarine Group** or would like help answering any questions concerning purchasing, selling or chartering a yacht, please call **+1(954)274-4435**

TABLE OF CONTENTS

TABLE OF CONTENTS	2
SPECIFICATIONS	7
Overview	7
Basic Information	7
Dimensions	8
Speed, Capacities and Weight	8
Accommodations	8
Hull and Deck Information	8
Engine Information	8
DETAILED INFORMATION	9
Description	9
Exclusions	14
Disclaimer	14
PHOTOS	15
130_ Mangusta_ cover	15
130_ Mangusta_ OMM-144	15
130_ Mangusta_ OMM-145	15
130_ Mangusta_ OMM-148	15
140 (1)	15
130_ Mangusta_ OMM-151	15
140 (2)	16
140 (3)	16
140 (4)	16
140 (5)	16
140 (6)	17
140 (7)	17
140 (8)	17
140 (9)	17

140 (10)	18
140 (11)	18
140 (12)	18
140 (13)	18
140 (15)	19
140 (14)	19
140 (17)	19
140 (16)	19
140 (18)	20
140 (19)	20
140 (20)	20
140 (21)	20
140 (22)	21
140 (23)	21
140 (24)	21
140 (25)	21
Crew Quarters (1)	22
Crew Quarters (13)	22
Crew Quarters (16)	22
Crew Quarters (15)	22
Crew Quarters (17)	23
Crew Quarters (18)	23
Crew Quarters (19)	23
Crew Quarters (20)	23
Crew Quarters (21)	24
Crew Quarters (22)	24
Crew Quarters (24)	24
Engine Room (1)	24
Engine Room (2)	25

Engine Room (3)	25
Engine Room (4)	25
Engine Room (5)	25
Engine Room (6)	26
Engine Room (7)	26
Engine Room (9)	26
Engine Room (8)	26
Guest strm (1)	27
Guest strm (2)	27
Guest strm (3)	27
Guest strm (4)	27
Guest strm (5)	28
Guest strm (6)	28
Guest strm (7)	28
Guest strm (8)	28
Guest strm (9)	28
Guest strm (10)	28
Guest strm (11)	29
Guest strm (12)	29
Guest strm (13)	29
Guest strm (14)	29
Guest strm (15)	30
Guest strm (16)	30
Guest strm (17)	30
Guest strm (18)	30
Guest strm (19)	31
Guest strm (20)	31
Master strm (1)	31
Master strm (2)	31

Master strm (3)	32
Master strm (4)	32
Master strm (5)	32
Master strm (6)	32
Master strm (7)	33
Salon (1)	33
Salon (2)	33
Salon (3)	33
Salon (5)	34
Salon (4)	34
Salon (6)	34
Salon (7)	34
Salon (8)	35
Salon (9)	35
Salon (10)	35
Skylounge (1)	35
Skylounge (2)	36
Skylounge (3)	36
Skylounge (4)	36
Skylounge (5)	36
Wheelhouse (1)	37
Skylounge (6)	37
Wheelhouse (2)	37
Wheelhouse (3)	37
Wheelhouse (4)	38
Wheelhouse (5)	38
Wheelhouse (6)	38
130_ Mangusta_ OMM-156	38
CONTACTS	39

Contact details	39
Telephones	39
Office hours	39
Address	39

SPECIFICATIONS

Overview

Kabir is an elegant, beautifully styled, 2007 130 Ft. Mangusta M130S Limited Edition and is a magnificent example of what Overmarine is capable of producing. Designed by Stefano Righini she was built in Viareggio, Italy to *Bureau Veritas* Class. Unlike the conventional M130, this super-yacht features a raised pilot house and a flybridge, dramatically increasing both the interior volume and the outside deck areas, allowing space for two saloons. Her lavish interior was designed by Luxury Interiors. In July 2020 she completed a massive refit with over \$1.8m invested that includes many outstanding upgrades.

Highlights of the 2020 **\$1.8m** Recently completed **Refit**:

- New Humphree Stabilization system including “at anchor” option
- New KVH HD11 satellite system for worldwide television service
- New 4009 VSAT antenna and dome
- New custom day head on sundeck
- New Atlas 75kw shore power converter, with warranty
- Complete new air conditioning system: 3 Compressors, pumps, 32 air handlers

- New Main Switchboard upgrade for automatic seamless transfer operations between generators and shore power. Touch screen operation, load sharing, and automated paralleling of generators

- New Custom Engine room and Metcalf Marine Exhaust systems for port and starboard Main Engine Exhausts
- Generator ends
- New Main Engine Batteries
- All New Zincs
- New Gyro
- New bottom paint

Basic Information

Category: Motor Yacht

Sub Category: Flybridge

Model Year: 2007

Year Built: 2007

Refit Year: 2020

Country: United States

Vessel Top: Open

Fly Bridge: Yes

Dimensions

LOA: 130' 0" (39.62m)

Beam: 15' 6" (4.72m)

Max Draft: 6' 5" (1.96m)

Speed, Capacities and Weight

Max Speed: 32 Kts. (37 MPH)

Gross Tonnage: 303 Pounds

Water Capacity: 1000 Gallons

Fuel Capacity: 5000 Gallons

Accommodations

Total Cabins: 4

Sleeps: 8

Total Heads: 6

Crew Sleeps: 3

Crew Heads: 3

Hull and Deck Information

Hull Material: Fiberglass

Engine Information

Engines: 2

Manufacturer: Detroit Diesel/MTU

Model: 16V 4000 M90

Engine Type: Inboard

Fuel Type: Diesel

DETAILED INFORMATION

Description

Owner May Consider Later Model Vessels 95'-100' in Trade

Kabir is an elegant, beautifully styled, 2007 130 Ft. Mangusta M130S Limited Edition and is a magnificent example of what Overmarine is capable of producing. Designed by Stefano Righini she was built in Viareggio, Italy to Bureau Veritas Class. Unlike the conventional M130, this super-yacht features a raised pilot house and a flybridge, dramatically increasing both the interior volume and the outside deck areas, allowing space for two saloons. Her lavish interior was designed by Luxury Interiors. In July 2020 she completed a massive refit with over \$1.8m invested that includes many outstanding upgrades.

*Highlights of the 2020 **\$1.8m** Recently completed **Refit**:*

- *New Humphree Stabilization system including “at anchor” option*
- *New KVH HD11 satellite system for worldwide television service*
- *New 4009 VSAT antenna and dome*
- *New custom day head on sundeck*
- *New Atlas 75kw shore power converter, with warranty*
- *Complete new air conditioning system: 3 Compressors, pumps, 32 air handlers*

- *New Main Switchboard upgrade for automatic seamless transfer operations between generators and shore power. Touch screen operation, load sharing, and automated paralleling of generators*

- *New Custom Engine room and Metcalf Marine Exhaust systems for port and starboard Main Engine Exhausts*
- *Generator ends*
- *New Main Engine Batteries*
- *All New Zincs*
- *New Gyro*

ACCOMMODATIONS

Kabir's interior configuration has been designed to comfortably accommodate up to 8 guests overnight in 4 cabins, comprising a master suite, 2 VIP stateroom, 1 double cabins. She is also capable of carrying up to 6 crew onboard in 3 cabins to ensure a relaxed luxury yacht experience.

CONSTRUCTION & DIMENSIONS

Kabir features a planing grp hull and grp superstructure, with teak decks. She was built to BV

(Bureau Veritas) classification society rules, and is MCA LY2 Compliant.

This luxury yacht is also fitted with 'zero speed stabilizers' which work at anchor, increasing on-board comfort when the yacht is stationary, particularly in rough waters.

PERFORMANCE

Powered by 2 MTU (16V 4000 M90) 3,750hp diesel engines and propelled by her twin waterjets Motor yacht Kabir is capable of a top speed of 32 knots, and comfortably cruises at 28 knots. With her 5,000 gallons fuel tanks she has a maximum range of 550 nautical miles at 28 knots. Her water tanks store around 1,000 Gallons of fresh water.

WALKTHROUGH

The Master Stateroom is a full beam master with king size island berth. Included is his and her closets, vanity, and full size hutch. The flat screen is centered across from the island berth. Entry to the master stateroom is through a separate TV and Office lounge area. The ensuite head includes his and her sinks and his and her toilets, each one enclosed with it's own frosted glass door. In between the toilet stalls is an enclosed stand up shower with steam bath.

The Forward VIP includes a full size bed, Pullman bunk, ensuite bathroom with stall shower and separate working office.

Port and Starboard guest cabins (between Master and VIP) are mirror image staterooms. Each one includes an island queen berth, mirrored closet and ensuite bathroom with stall shower.

*Upon entering the **Aft deck** area you have seating for six, entry to the **Aft Salon**, and stairs to the flybridge. On the lower deck you will find a large seating area,*

*Upon entering the **Salon** you have lounging and seating to your right and a full bar to your left. Forward, on both sides is access to the helm along with access to the forward salon and formal dining. Entry along the port side also allows for entry below to the main galley and crew area.*

*Upon entry to the **Mid-deck Salon** you are greeted by the **Formal Dining Area**, serving six. The TV island provides visual separation between the dining area and the salon. Salon area includes port and starboard seating.*

Forward, portside, is the stairway to the day head followed by the guest cabins.

*You are first greeted by the **Forward VIP** which includes a full size bed, Pullman bunk, ensuite bathroom with stall shower and separate working office.*

Aft of that is the main passageway leading to the port and starboard guest cabins and the master stateroom.

*The **Master Stateroom** is a full beam master with king size island berth. Included is his and her closets, vanity, and full size hutch. The flat screen is centered across from the island berth. Entry to the master stateroom is through a separate TV and Office lounge area. The ensuite head*

includes his and her sinks and his and her toilets, each one enclosed with it's own frosted glass door. In between the toilet stalls is an enclosed stand up shower with steam bath.

Port and Starboard guest cabins (between Master and VIP) are mirror image staterooms. Each one includes an island queen berth, mirrored closet and ensuite bathroom with stall shower.

Moving all the way again to the aft deck gives us access to the **Flybridge** area which accommodates a day head. Starboard side is seating and sunning areas.

On the bow is the sunpad and sunshade.

AFT DECK, SPLIT LEVEL

- Gorgeous teak decking throughout
- Aft dining for six, upper level
- Covered wing storage, port and starboard, for one jet ski each
- Steps, port and starboard, leading down to Jacuzzi and swim platform
- Portside teak stairs leading to flybridge
- Oversize sunshade

FLYBRIDGE

- Sliding electric glass door secures flybridge
- Aft dining for 6
- Casual seating for 10, starboard
- Sunpad forward

AFT UPPER SALON AND HELM AREA

- Full wet bar, portside
- Enclosed Flatscreen TV, forward, center, rises up for viewing. (Helm area ahead)
- Casual seating, starboard side
- Twin coffee tables
- Port and Starboard Access to helm area

HELM AREA

- Seating for three
- Humphrey Stabilizer system
- Chart stations port and starboard
- Furuno 1834C Radar Pilot House
- Furuno Black Box FAR 2117 Radar Pilot House
- Furuno FA 150 AIS System
- Furuno Fax 30-NavNet Whip Antenna with FAX-5 Navtex
- Furuno FM 8800 HS-2003 RB 8800 RB 8800 VHF ASN Class A fMO & SMSDSM
- Furuno GD-1920C Radar Pilot House

- *Furuno GP37PRO DGPS SBAS/WAAS GP-320B GPS*
- *Furuno NavNet ETR-6 Depth*
- *Furuno FS 1570 MF/HF Radiotelephone*
- *Furuno RD 30 Data Repeater*
- *Airmar Ultrasonic weather Station Wind Transducer*

LOWER SALON, FORWARD

- *Port and Starboard access from Upper Salon*
- *Main elegant dining for 6*
- *Center unit houses rising flatscreen TV*
- *Social seating port and starboard*
- *Kaliedascope system with Apple Mini computer and remote controls*
- *Stairway forward leads to staterooms below*
- ***Day head at bottom of stairs***

MASTER STATEROOM

- *King size island berth, storage underneath*
- *Full length hutch, starboard*
- *Vanity, port side*
- *His and Hers walk in closets*
- *Nightstands with lamps*
- *Flatscreen TV w multi function remote*
- *Vanity, portside*

Master Stateroom Head

- *Steam sauna / stand up shower*
- *His and Hers toilet stalls, with door*
- *His and Hers sinks.*

Separate Working Office

- *Built-in desk and shelving*
- *Flatscreen*
- *Sound system*
- *Two padded crocodile upholstered chairs*
- *Table*

VIP, FORWARD

- *Full size bed*
- *Pullman bunk*
- *Flatscreen TV*
- *Ensuite head with stall shower*
- *Attached working office with yacht instrument repeaters*

GUEST CABINS

- *Located between the Master and VIP cabins*
- *One cabin portside, the other starboard.*
- *Island queen berth*
- *Mirrored closet*
- *Flatscreen TV*
- *Ensuite head with stall shower*

CREW CABINS, lower deck, three cabins

- *Over and under twin size bunks*
- *Flat screen TV*
- *Ensuite head with stall shower*

GALLEY

- *Crew dining area with flatscreen TV*
- *Four refrigerators, professional style*
- *Gaggenau oven with four burner electric top*
- *Stainless steel full size countertop*
- *Twin basin stainless steel sink*
- *Zanussi dishwasher x 2*
- *Microwave/convection oven*
- *Underfloor Pantry*
- *Underfloor freezer x 2*

LAUNDRY ROOM / STORAGE

- *Full size Miele Dryer x 2*
- *Full size Miele Washer x 2*
- *Freezers x 2*

ENGINE ROOM

- *MTU 16V4000 M90 x 2, under 1,000 original hours, 3,650 horsepower Each.*
- *2 x Kohler 70 EF0Z generators, 70kw each*
- *2 x KAMEWA 71 S II waterjets*

"Kabir" not for sale to U.S. residents in U.S. waters

Exclusions

Owner's personal belongings.

Disclaimer

The Company offers the details of this vessel or yacht in good faith but cannot guarantee or warrant the accuracy of this information nor warrant the condition of the vessel. A buyer should instruct his representatives, agents, or his surveyors, to investigate such details as the buyer desires validated. This vessel or yacht is offered subject to prior sale, price change, or withdrawal without notice.

PHOTOS

130_Mangusta_cover



130_Mangusta_OMM-144



130_Mangusta_OMM-145



130_Mangusta_OMM-148



140 (1)

130_Mangusta_OMM-151



140 (2)



140 (3)



140 (4)



140 (5)



140 (6)



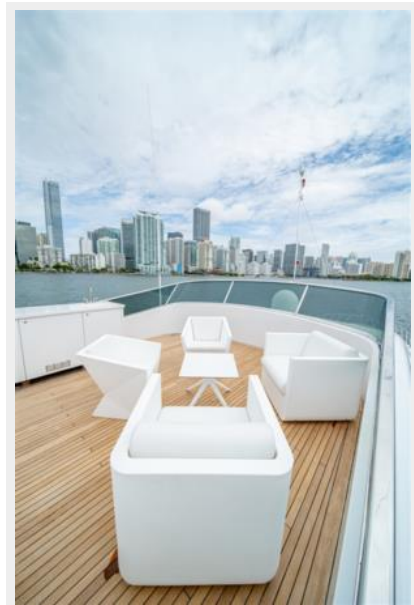
140 (7)



140 (8)



140 (9)



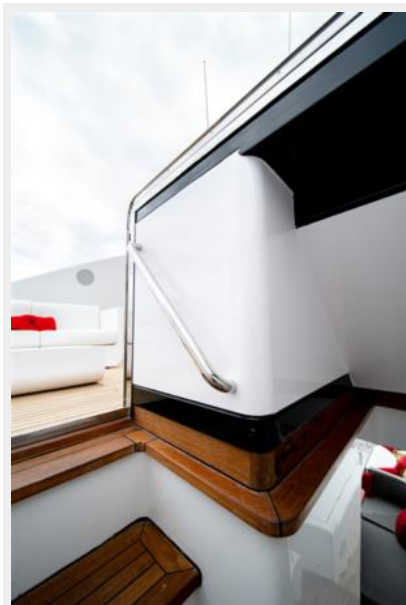
140 (10)



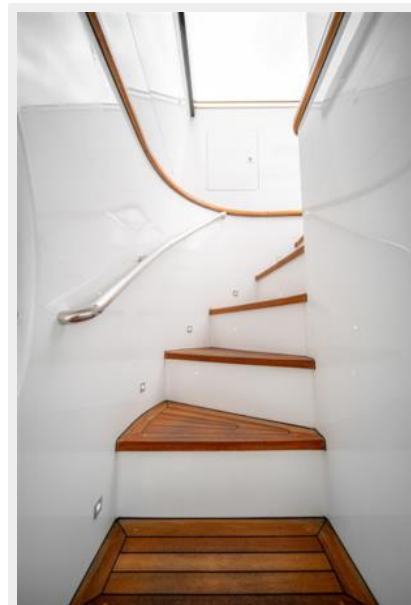
140 (11)



140 (12)



140 (13)



140 (14)



140 (15)



140 (17)



140 (16)



140 (18)



140 (19)



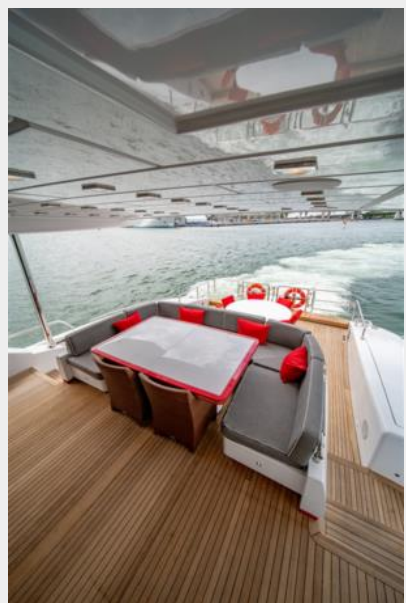
140 (20)



140 (21)



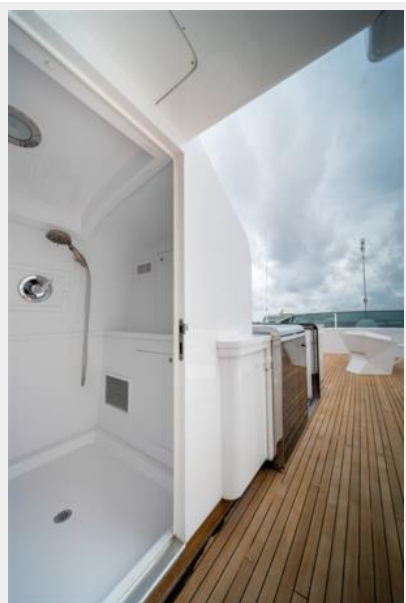
140 (22)



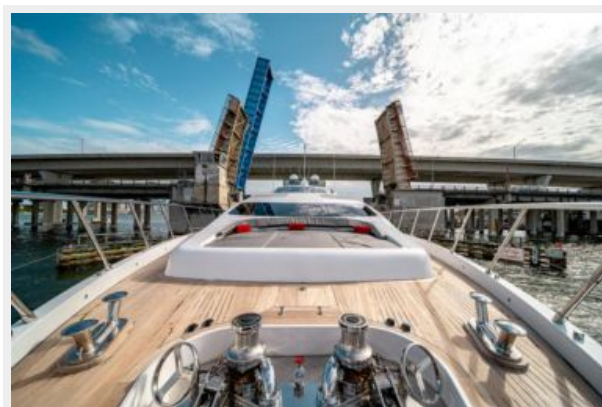
140 (23)



140 (24)



140 (25)



Crew Quarters (1)



Crew Quarters (13)



Crew Quarters (16)



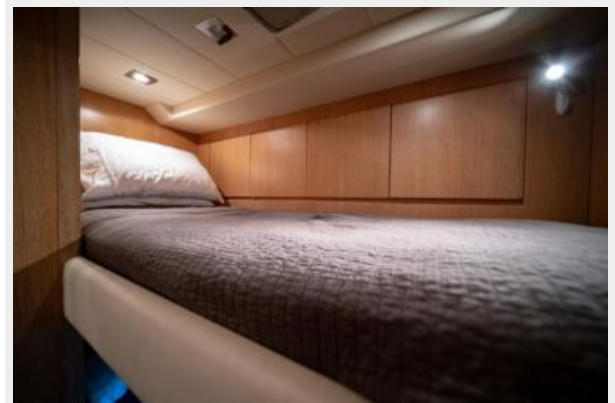
Crew Quarters (15)



Crew Quarters (17)



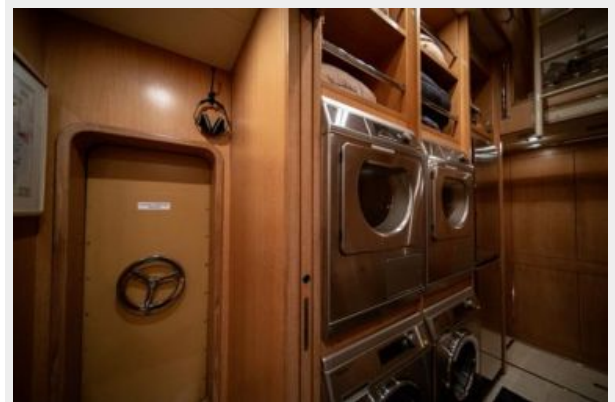
Crew Quarters (18)



Crew Quarters (19)



Crew Quarters (20)



Crew Quarters (21)



Crew Quarters (22)



Crew Quarters (24)



Engine Room (1)



Engine Room (2)



Engine Room (3)



Engine Room (4)



Engine Room (5)



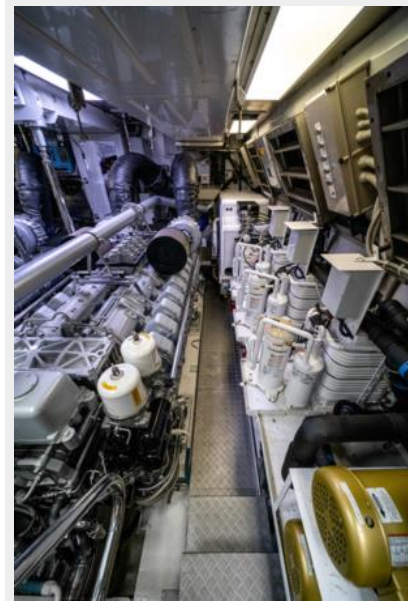
Engine Room (6)



Engine Room (7)



Engine Room (9)



Engine Room (8)



Guest stnm (1)



Guest stnm (2)



Guest stnm (3)



Guest stnm (4)



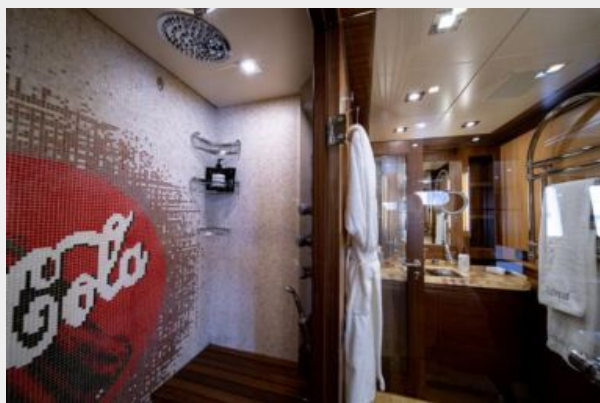
Guest stnm (5)



Guest stnm (6)



Guest stnm (7)



Guest stnm (8)



Guest stnm (9)



Guest stnm (10)



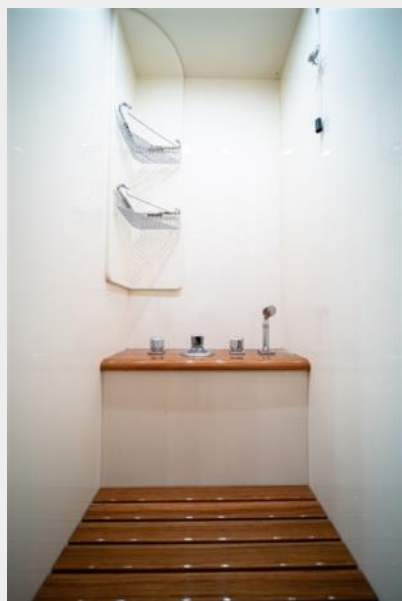
Guest strm (11)



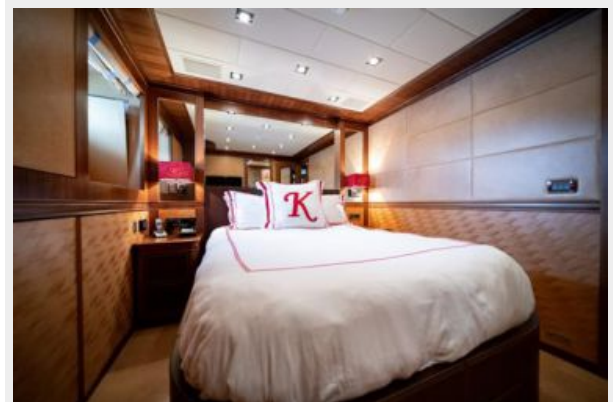
Guest strm (12)



Guest strm (13)



Guest strm (14)



Guest stnm (15)



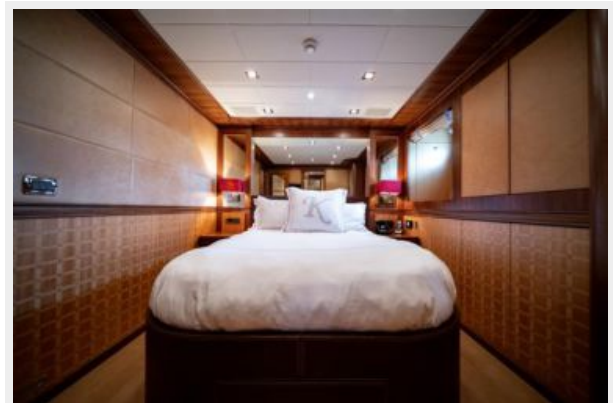
Guest stnm (16)



Guest stnm (17)



Guest stnm (18)



Guest stnm (19)



Guest stnm (20)



Master stnm (1)



Master stnm (2)



Master stnm (3)



Master stnm (4)



Master stnm (5)



Master stnm (6)



Master stnm (7)



Salon (1)



Salon (2)



Salon (3)



Salon (4)



Salon (5)



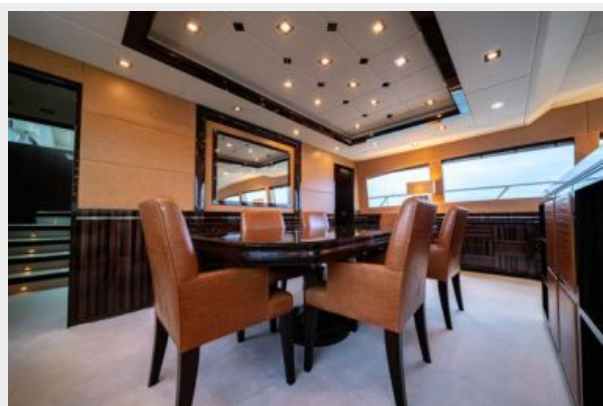
Salon (6)



Salon (7)



Salon (8)



Salon (9)



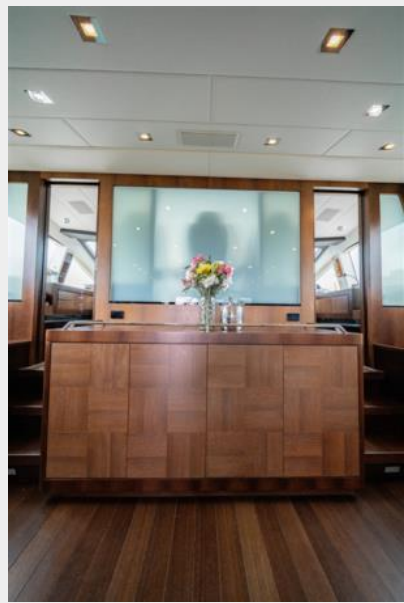
Salon (10)



Skylounge (1)



Skylounge (2)



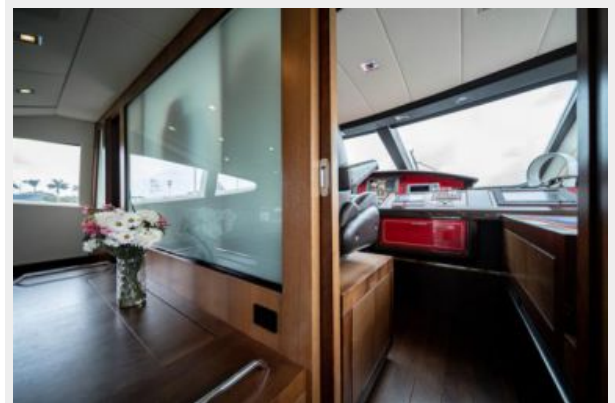
Skylounge (3)



Skylounge (4)



Skylounge (5)



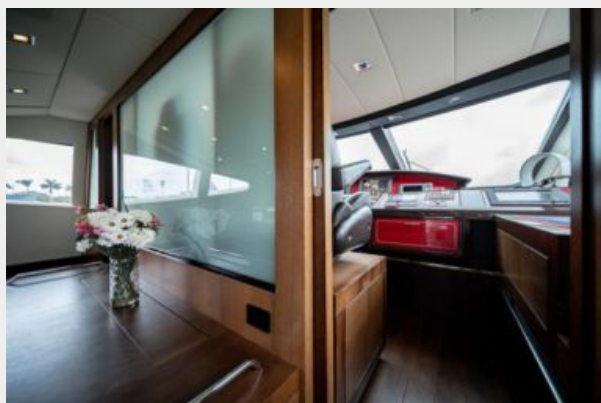
Skylounge (6)



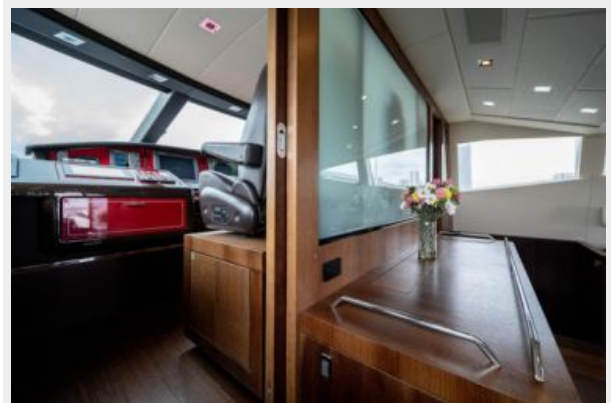
Wheelhouse (1)



Wheelhouse (2)



Wheelhouse (3)



Wheelhouse (4)



Wheelhouse (5)



Wheelhouse (6)



130_ Mangusta_OMM-156



CONTACTS

Andrey Shestakov, leading yacht broker of the sales department of Shestakov Yacht Sales Inc. Shestakov Yacht Sales Inc., the official representative of the Miami/Fort Lauderdale FL headquarters.

Contact details

Email: andrey@shestakovyachtsales.com

Web: shestakovyachtsales.com/en/

Telephones

USA: +1(954)274-4435

Office hours

Monday – Saturday: **9:00 - 21:00** EDT

Sunday: **closed**

Address



Harbour Towne Marina, 850 NE 3rd St,
STE 213, Dania, FL 33004