

KABIR 130S STABILIZED WITHOUT TAKING — OVERMARINE GROUP



Судостроитель: [Overmarine Group](#)

Год постройки: 2007

Модель: Моторная яхта

Цена: **ЦЕНА ЯХТЫ ПО ЗАПРОСУ**

Местонахождение: United States

Длина общая: 130' 0" (39.62m)

Ширина: 15' 6" (4.72m)

Макс. осадка: 6' 5" (1.96m)

Макс. скорость: 32 Kts. (37 MPH)

Купить Kabir 130s Stabilized without taking away from performance — Overmarine Group а также выбрать подходящую вам яхту из нашего каталога яхт вам поможет опытный яхтенный брокер Андрей Шестаков. На сегодняшний день компания Shestakov Yacht Sales Inc. имеет большое количество яхт в собственном списке продаж, а также тесно сотрудничает со всеми крупными яхтенными производителями по всему миру.

Для того чтобы купить яхту Kabir 130s Stabilized without taking away from performance — Overmarine Group а также проконсультироваться по любому вопросу связанному с покупкой, продажей, чартером яхт позвоните по телефону **+7(918)465-66-44**.

ОГЛАВЛЕНИЕ

ОГЛАВЛЕНИЕ	2
ХАРАКТЕРИСТИКИ	7
Обзор	7
Основная информация	7
Размеры	8
Скорость, вместимость и масса	8
Размещение	8
Корпус и палуба	8
Информация о двигателе	8
ПОДРОБНОЕ ОПИСАНИЕ	9
Description	9
Исключения	14
Отказ от ответственности	14
ФОТОГРАФИИ	15
130_Mangusta_cover	15
130_Mangusta_OMM-144	15
130_Mangusta_OMM-145	15
130_Mangusta_OMM-148	15
140 (1)	15
130_Mangusta_OMM-151	15
140 (2)	16
140 (3)	16
140 (4)	16
140 (5)	16
140 (6)	17
140 (7)	17
140 (8)	17
140 (9)	17

140 (10)	18
140 (11)	18
140 (12)	18
140 (13)	18
140 (15)	19
140 (14)	19
140 (17)	19
140 (16)	19
140 (18)	20
140 (19)	20
140 (20)	20
140 (21)	20
140 (22)	21
140 (23)	21
140 (24)	21
140 (25)	21
Crew Quarters (1)	22
Crew Quarters (13)	22
Crew Quarters (16)	22
Crew Quarters (15)	22
Crew Quarters (17)	23
Crew Quarters (18)	23
Crew Quarters (19)	23
Crew Quarters (20)	23
Crew Quarters (21)	24
Crew Quarters (22)	24
Crew Quarters (24)	24
Engine Room (1)	24
Engine Room (2)	25

Engine Room (3)	25
Engine Room (4)	25
Engine Room (5)	25
Engine Room (6)	26
Engine Room (7)	26
Engine Room (9)	26
Engine Room (8)	26
Guest strm (1)	27
Guest strm (2)	27
Guest strm (3)	27
Guest strm (4)	27
Guest strm (5)	28
Guest strm (6)	28
Guest strm (7)	28
Guest strm (8)	28
Guest strm (9)	28
Guest strm (10)	28
Guest strm (11)	29
Guest strm (12)	29
Guest strm (13)	29
Guest strm (14)	29
Guest strm (15)	30
Guest strm (16)	30
Guest strm (17)	30
Guest strm (18)	30
Guest strm (19)	31
Guest strm (20)	31
Master strm (1)	31
Master strm (2)	31

Master strm (3)	32
Master strm (4)	32
Master strm (5)	32
Master strm (6)	32
Master strm (7)	33
Salon (1)	33
Salon (2)	33
Salon (3)	33
Salon (5)	34
Salon (4)	34
Salon (6)	34
Salon (7)	34
Salon (8)	35
Salon (9)	35
Salon (10)	35
Skylounge (1)	35
Skylounge (2)	36
Skylounge (3)	36
Skylounge (4)	36
Skylounge (5)	36
Wheelhouse (1)	37
Skylounge (6)	37
Wheelhouse (2)	37
Wheelhouse (3)	37
Wheelhouse (4)	38
Wheelhouse (5)	38
Wheelhouse (6)	38
130_ Mangusta_ OMM-156	38
КОНТАКТЫ	39

Контактная информация	39
Телефоны	39
Время работы	39
Адрес	39

ХАРАКТЕРИСТИКИ

Обзор

Kabir is an elegant, beautifully styled, 2007 130 Ft. Mangusta M130S Limited Edition and is a magnificent example of what Overmarine is capable of producing. Designed by Stefano Righini she was built in Viareggio, Italy to *Bureau Veritas* Class. Unlike the conventional M130, this super-yacht features a raised pilot house and a flybridge, dramatically increasing both the interior volume and the outside deck areas, allowing space for two saloons. Her lavish interior was designed by Luxury Interiors. In July 2020 she completed a massive refit with over \$1.8m invested that includes many outstanding upgrades.

Highlights of the 2020 **\$1.8m** Recently completed **Refit**:

- New Humphree Stabilization system including “at anchor” option
- New KVH HD11 satellite system for worldwide television service
- New 4009 VSAT antenna and dome
- New custom day head on sundeck
- New Atlas 75kw shore power converter, with warranty
- Complete new air conditioning system: 3 Compressors, pumps, 32 air handlers

- New Main Switchboard upgrade for automatic seamless transfer operations between generators and shore power. Touch screen operation, load sharing, and automated paralleling of generators

- New Custom Engine room and Metcalf Marine Exhaust systems for port and starboard Main Engine Exhausts
- Generator ends
- New Main Engine Batteries
- All New Zincs
- New Gyro
- New bottom paint

Основная информация

Тип судна: Моторная яхта

Подкатегория: Flybridge

Модельный год: 2007

Год постройки: 2007

Год обновления: 2020

Страна: United States

Верх: Open

Открытая палуба мостика: Да

Размеры

Длина общая: 130' 0" (39.62m)

Ширина: 15' 6" (4.72m)

Макс. осадка: 6' 5" (1.96m)

Скорость, вместимость и масса

Макс. скорость: 32 Kts. (37 MPH)

Чистый вес: 303 Pounds

Вместимость воды: 1000 Gallons

Объем топливного бака: 5000 Gallons

Размещение

Всего кают: 4

Спальные места: 8

Всего ком. состава: 6

Спальных мест экипажа: 3

Комм. состав экипажа: 3

Корпус и палуба

Материал корпуса: Fiberglass

Информация о двигателе

Двигатели: 2

Производитель: Detroit Diesel/MTU

Модель: 16V 4000 M90

Тип двигателя: Inboard

Тип топлива: Diesel

ПОДРОБНОЕ ОПИСАНИЕ

Description

Owner May Consider Later Model Vessels 95'-100' in Trade

Kabir is an elegant, beautifully styled, 2007 130 Ft. Mangusta M130S Limited Edition and is a magnificent example of what Overmarine is capable of producing. Designed by Stefano Righini she was built in Viareggio, Italy to Bureau Veritas Class. Unlike the conventional M130, this super-yacht features a raised pilot house and a flybridge, dramatically increasing both the interior volume and the outside deck areas, allowing space for two saloons. Her lavish interior was designed by Luxury Interiors. In July 2020 she completed a massive refit with over \$1.8m invested that includes many outstanding upgrades.

*Highlights of the 2020 **\$1.8m** Recently completed **Refit**:*

- *New Humphree Stabilization system including “at anchor” option*
- *New KVH HD11 satellite system for worldwide television service*
- *New 4009 VSAT antenna and dome*
- *New custom day head on sundeck*
- *New Atlas 75kw shore power converter, with warranty*
- *Complete new air conditioning system: 3 Compressors, pumps, 32 air handlers*

- *New Main Switchboard upgrade for automatic seamless transfer operations between generators and shore power. Touch screen operation, load sharing, and automated paralleling of generators*

- *New Custom Engine room and Metcalf Marine Exhaust systems for port and starboard Main Engine Exhausts*
- *Generator ends*
- *New Main Engine Batteries*
- *All New Zincs*
- *New Gyro*

ACCOMMODATIONS

Kabir's interior configuration has been designed to comfortably accommodate up to 8 guests overnight in 4 cabins, comprising a master suite, 2 VIP stateroom, 1 double cabins. She is also capable of carrying up to 6 crew onboard in 3 cabins to ensure a relaxed luxury yacht experience.

CONSTRUCTION & DIMENSIONS

Kabir features a planing grp hull and grp superstructure, with teak decks. She was built to BV

(Bureau Veritas) classification society rules, and is MCA LY2 Compliant.

This luxury yacht is also fitted with 'zero speed stabilizers' which work at anchor, increasing on-board comfort when the yacht is stationary, particularly in rough waters.

PERFORMANCE

Powered by 2 MTU (16V 4000 M90) 3,750hp diesel engines and propelled by her twin waterjets Motor yacht Kabir is capable of a top speed of 32 knots, and comfortably cruises at 28 knots. With her 5,000 gallons fuel tanks she has a maximum range of 550 nautical miles at 28 knots. Her water tanks store around 1,000 Gallons of fresh water.

WALKTHROUGH

The Master Stateroom is a full beam master with king size island berth. Included is his and her closets, vanity, and full size hutch. The flat screen is centered across from the island berth. Entry to the master stateroom is through a separate TV and Office lounge area. The ensuite head includes his and her sinks and his and her toilets, each one enclosed with it's own frosted glass door. In between the toilet stalls is an enclosed stand up shower with steam bath.

The Forward VIP includes a full size bed, Pullman bunk, ensuite bathroom with stall shower and separate working office.

Port and Starboard guest cabins (between Master and VIP) are mirror image staterooms. Each one includes an island queen berth, mirrored closet and ensuite bathroom with stall shower.

*Upon entering the **Aft deck** area you have seating for six, entry to the **Aft Salon**, and stairs to the flybridge. On the lower deck you will find a large seating area,*

*Upon entering the **Salon** you have lounging and seating to your right and a full bar to your left. Forward, on both sides is access to the helm along with access to the forward salon and formal dining. Entry along the port side also allows for entry below to the main galley and crew area.*

*Upon entry to the **Mid-deck Salon** you are greeted by the **Formal Dining Area**, serving six. The TV island provides visual separation between the dining area and the salon. Salon area includes port and starboard seating.*

Forward, portside, is the stairway to the day head followed by the guest cabins.

*You are first greeted by the **Forward VIP** which includes a full size bed, Pullman bunk, ensuite bathroom with stall shower and separate working office.*

Aft of that is the main passageway leading to the port and starboard guest cabins and the master stateroom.

*The **Master Stateroom** is a full beam master with king size island berth. Included is his and her closets, vanity, and full size hutch. The flat screen is centered across from the island berth. Entry to the master stateroom is through a separate TV and Office lounge area. The ensuite head*

includes his and her sinks and his and her toilets, each one enclosed with it's own frosted glass door. In between the toilet stalls is an enclosed stand up shower with steam bath.

Port and Starboard guest cabins (between Master and VIP) are mirror image staterooms. Each one includes an island queen berth, mirrored closet and ensuite bathroom with stall shower.

Moving all the way again to the aft deck gives us access to the **Flybridge** area which accommodates a day head. Starboard side is seating and sunning areas.

On the bow is the sunpad and sunshade.

AFT DECK, SPLIT LEVEL

- Gorgeous teak decking throughout
- Aft dining for six, upper level
- Covered wing storage, port and starboard, for one jet ski each
- Steps, port and starboard, leading down to Jacuzzi and swim platform
- Portside teak stairs leading to flybridge
- Oversize sunshade

FLYBRIDGE

- Sliding electric glass door secures flybridge
- Aft dining for 6
- Casual seating for 10, starboard
- Sunpad forward

AFT UPPER SALON AND HELM AREA

- Full wet bar, portside
- Enclosed Flatscreen TV, forward, center, rises up for viewing. (Helm area ahead)
- Casual seating, starboard side
- Twin coffee tables
- Port and Starboard Access to helm area

HELM AREA

- Seating for three
- Humphrey Stabilizer system
- Chart stations port and starboard
- Furuno 1834C Radar Pilot House
- Furuno Black Box FAR 2117 Radar Pilot House
- Furuno FA 150 AIS System
- Furuno Fax 30-NavNet Whip Antenna with FAX-5 Navtex
- Furuno FM 8800 HS-2003 RB 8800 RB 8800 VHF ASN Class A fMO & SMSDSM
- Furuno GD-1920C Radar Pilot House

- *Furuno GP37PRO DGPS SBAS/WAAS GP-320B GPS*
- *Furuno NavNet ETR-6 Depth*
- *Furuno FS 1570 MF/HF Radiotelephone*
- *Furuno RD 30 Data Repeater*
- *Airmar Ultrasonic weather Station Wind Transducer*

LOWER SALON, FORWARD

- *Port and Starboard access from Upper Salon*
- *Main elegant dining for 6*
- *Center unit houses rising flatscreen TV*
- *Social seating port and starboard*
- *Kaliedascope system with Apple Mini computer and remote controls*
- *Stairway forward leads to staterooms below*
- ***Day head at bottom of stairs***

MASTER STATEROOM

- *King size island berth, storage underneath*
- *Full length hutch, starboard*
- *Vanity, port side*
- *His and Hers walk in closets*
- *Nightstands with lamps*
- *Flatscreen TV w multi function remote*
- *Vanity, portside*

Master Stateroom Head

- *Steam sauna / stand up shower*
- *His and Hers toilet stalls, with door*
- *His and Hers sinks.*

Separate Working Office

- *Built-in desk and shelving*
- *Flatscreen*
- *Sound system*
- *Two padded crocodile upholstered chairs*
- *Table*

VIP, FORWARD

- *Full size bed*
- *Pullman bunk*
- *Flatscreen TV*
- *Ensuite head with stall shower*
- *Attached working office with yacht instrument repeaters*

GUEST CABINS

- *Located between the Master and VIP cabins*
- *One cabin portside, the other starboard.*
- *Island queen berth*
- *Mirrored closet*
- *Flatscreen TV*
- *Ensuite head with stall shower*

CREW CABINS, lower deck, three cabins

- *Over and under twin size bunks*
- *Flat screen TV*
- *Ensuite head with stall shower*

GALLEY

- *Crew dining area with flatscreen TV*
- *Four refrigerators, professional style*
- *Gaggenau oven with four burner electric top*
- *Stainless steel full size countertop*
- *Twin basin stainless steel sink*
- *Zanussi dishwasher x 2*
- *Microwave/convection oven*
- *Underfloor Pantry*
- *Underfloor freezer x 2*

LAUNDRY ROOM / STORAGE

- *Full size Miele Dryer x 2*
- *Full size Miele Washer x 2*
- *Freezers x 2*

ENGINE ROOM

- *MTU 16V4000 M90 x 2, under 1,000 original hours, 3,650 horsepower Each.*
- *2 x Kohler 70 EF0Z generators, 70kw each*
- *2 x KAMEWA 71 S II waterjets*

"Kabir" not for sale to U.S. residents in U.S. waters

Исключения

При продаже яхты исключаются личные вещи владельца.

Отказ от ответственности

Компания предоставляет описание судна или яхты добросовестно, но не может гарантировать точность этой информации, а также не ручается за техническое состояние. Покупатель должен проинструктировать своих агентов или оценщиков исследовать представленную информацию более подробно, по собственному желанию. Продажа судна или яхты, изменение цены или снятие с продажи будет происходить без предварительного уведомления.

ФОТОГРАФИИ

130_Mangusta_cover



130_Mangusta_OMM-144



130_Mangusta_OMM-145



130_Mangusta_OMM-148



140 (1)

130_Mangusta_OMM-151



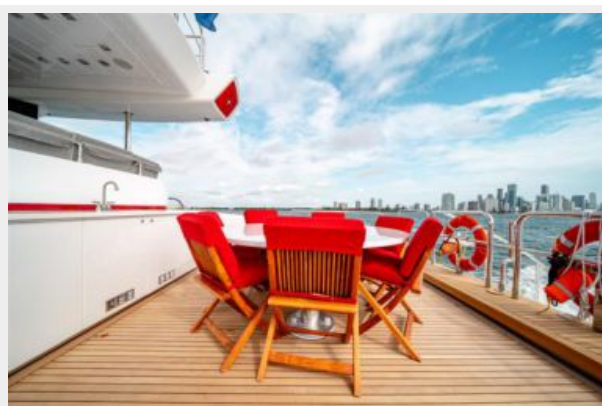
140 (2)



140 (3)



140 (4)



140 (5)



140 (6)



140 (7)



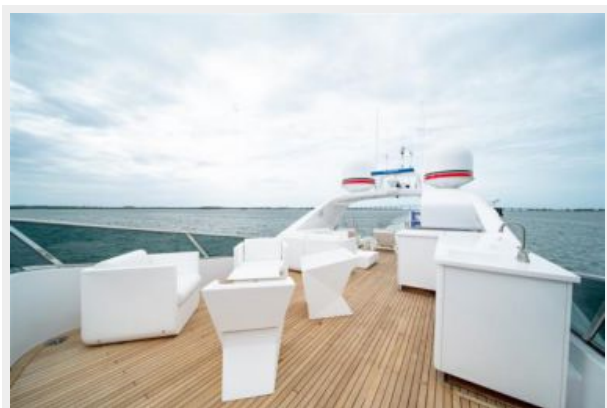
140 (8)



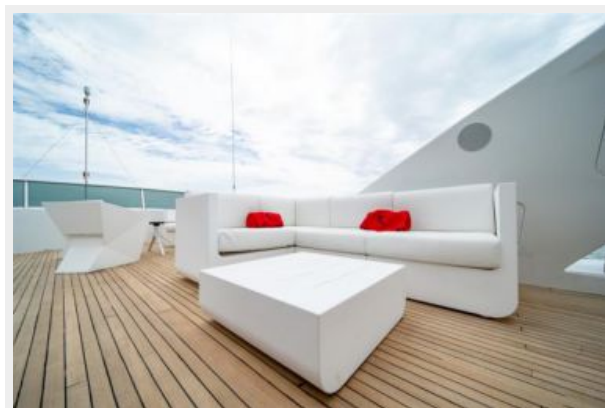
140 (9)



140 (10)



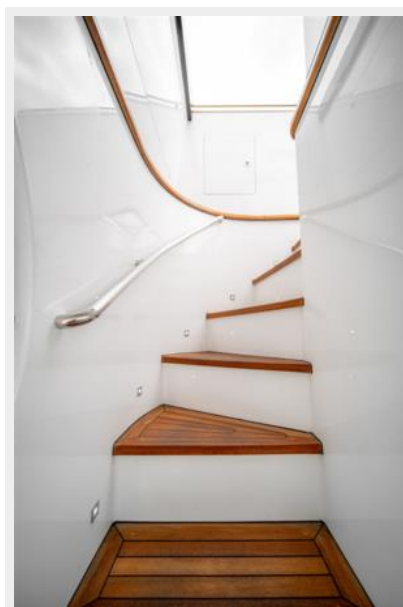
140 (11)



140 (12)



140 (13)



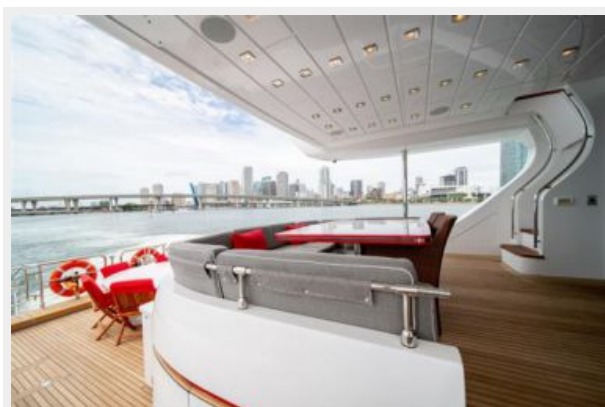
140 (14)



140 (15)



140 (16)



140 (17)



140 (18)



140 (19)



140 (20)



140 (21)



140 (22)



140 (23)



140 (24)



140 (25)



Crew Quarters (1)



Crew Quarters (13)



Crew Quarters (15)



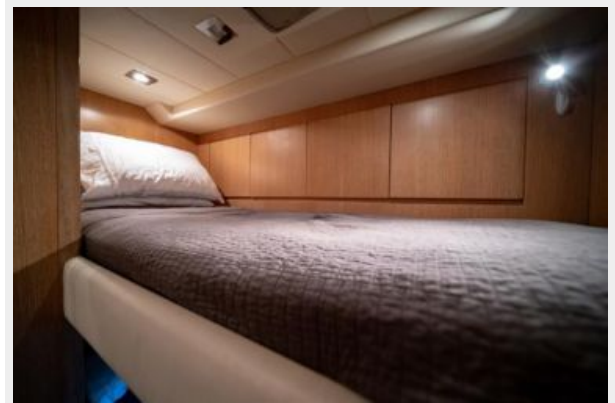
Crew Quarters (16)



Crew Quarters (17)



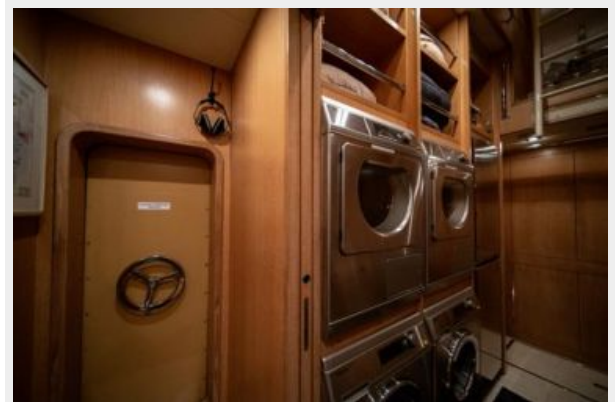
Crew Quarters (18)



Crew Quarters (19)



Crew Quarters (20)



Crew Quarters (21)



Crew Quarters (22)



Crew Quarters (24)



Engine Room (1)



Engine Room (2)



Engine Room (3)



Engine Room (4)



Engine Room (5)



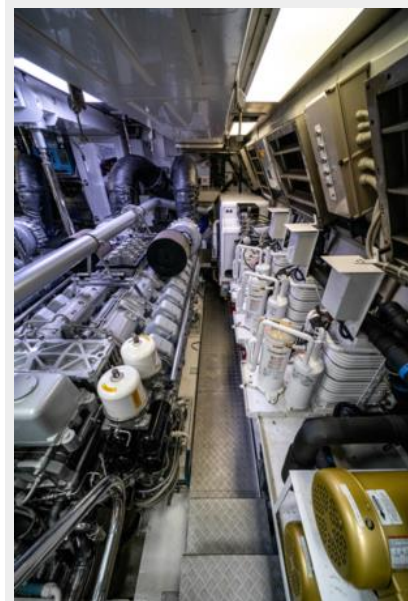
Engine Room (6)



Engine Room (7)



Engine Room (9)



Engine Room (8)



Guest stnm (1)



Guest stnm (2)



Guest stnm (3)



Guest stnm (4)



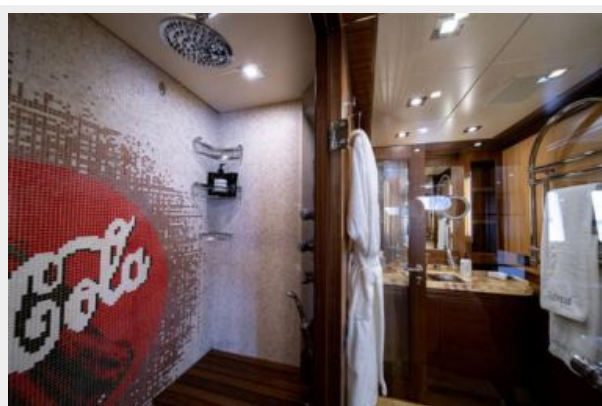
Guest stnm (5)



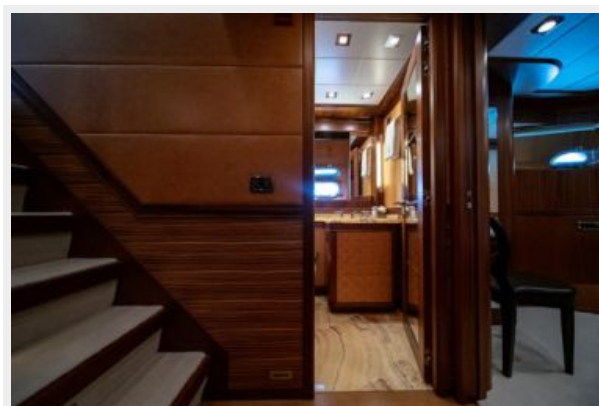
Guest stnm (6)



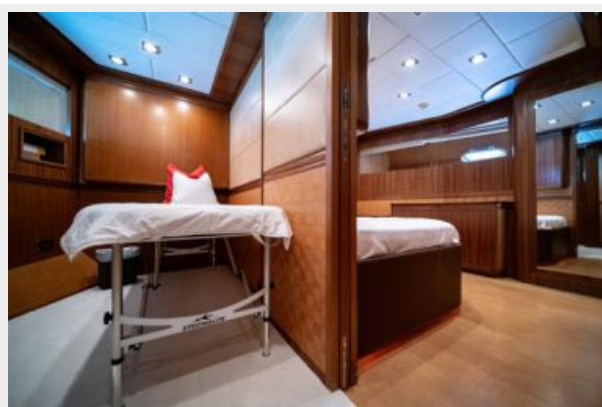
Guest stnm (7)



Guest stnm (8)



Guest stnm (9)



Guest stnm (10)



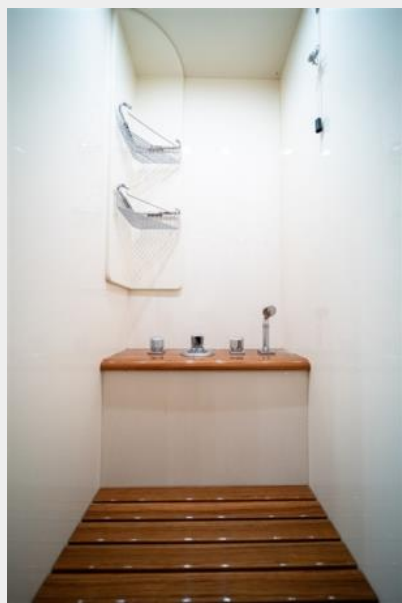
Guest stbm (11)



Guest stbm (12)



Guest stbm (13)



Guest stbm (14)



Guest stnm (15)



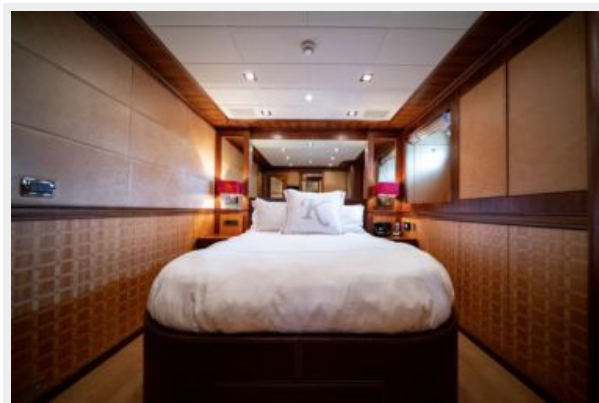
Guest stnm (16)



Guest stnm (17)



Guest stnm (18)



Guest stnm (19)



Guest stnm (20)



Master stnm (1)



Master stnm (2)



Master stbm (3)



Master stbm (4)



Master stbm (5)



Master stbm (6)



Master strom (7)



Salon (1)



Salon (2)



Salon (3)



Salon (4)



Salon (5)



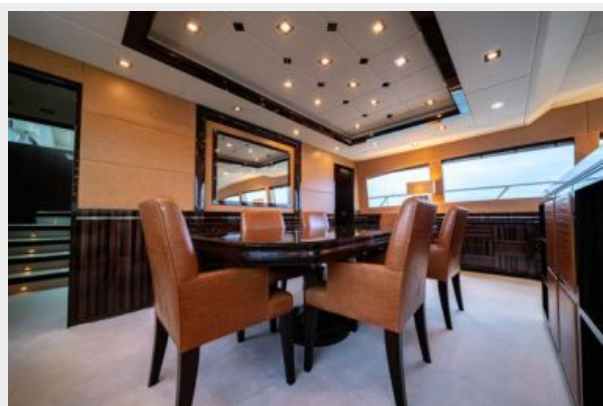
Salon (6)



Salon (7)



Salon (8)



Salon (9)



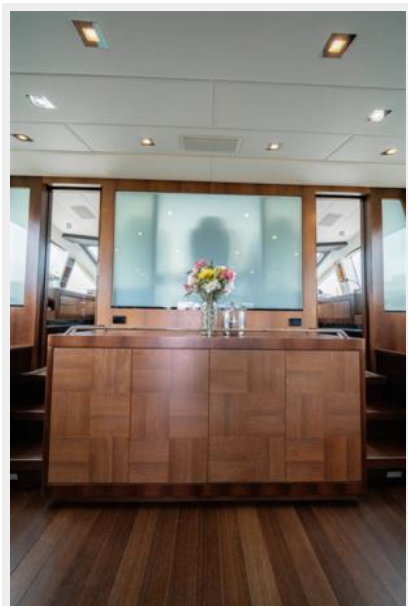
Salon (10)



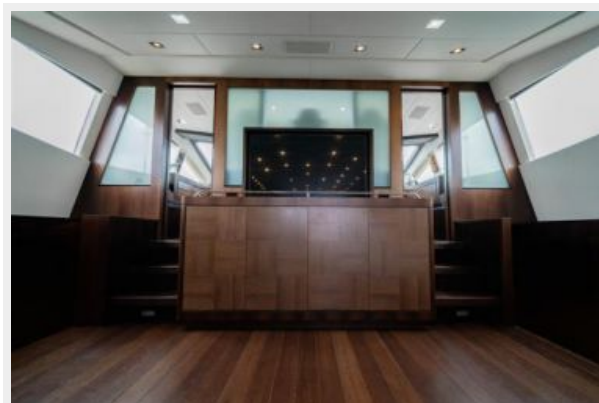
Skylounge (1)



Skylounge (2)



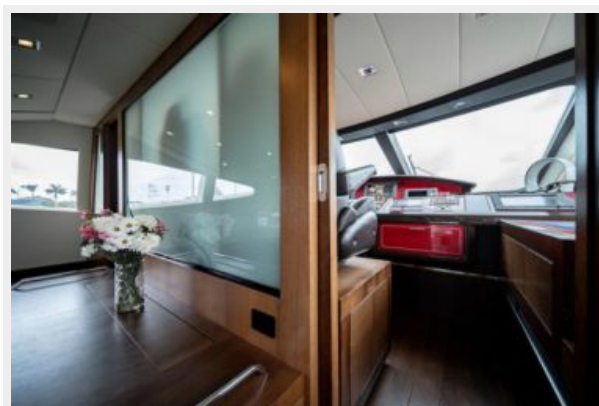
Skylounge (3)



Skylounge (4)



Skylounge (5)



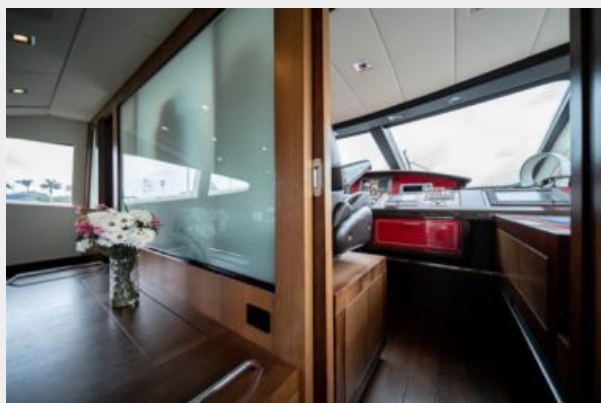
Skylounge (6)



Wheelhouse (1)



Wheelhouse (2)



Wheelhouse (3)



Wheelhouse (4)



Wheelhouse (5)



Wheelhouse (6)



130_ Mangusta_OMM-156



КОНТАКТЫ

Андрей Шестаков (Andrey Shestakov) – ведущий яхтенный брокер отдела продаж яхт и судов компании Shestakov Yacht Sales Inc. Официальный представитель Shestakov Yacht Sales Inc. для русскоговорящих клиентов в центральном офисе компании в Майами/Форт Лодердейл/Флорида/США.

Контактная информация

Email: andrey@shestakovyachtsales.com

Web: shestakovyachtsales.com

Телефоны

Краснодарский край: **+7(918)465-66-44**

США, Майами, Флорида: **+1(954)274-4435**

Время работы

Понедельник – Суббота: **9:00 - 21:00**
EDT

Воскресенье: **Закрето**

Адрес



Harbour Towne Marina, 850 NE 3rd St,
STE 213, Dania, FL 33004