

SEA JULES — BENETEAU



Судостроитель: BENETEAU

Год постройки: 2014

Модель: Sloop

Цена: **ЦЕНА ЯХТЫ ПО ЗАПРОСУ**

Местонахождение: United States

Длина общая: 45' 0" (13.72m)

Ширина: 14' 10" (4.52m)

Макс. осадка: 6' 0" (1.83m)

Крейс. скорость: 7 Kts. (8 MPH)

Купить **Sea Jules — BENETEAU** а также выбрать подходящую вам яхту из нашего каталога яхт вам поможет опытный яхтенный брокер Андрей Шестаков. На сегодняшний день компания **Shestakov Yacht Sales Inc.** имеет большое количество яхт в собственном списке продаж, а также тесно сотрудничает со всеми крупными яхтенными производителями по всему миру.

Для того чтобы купить яхту **Sea Jules — BENETEAU** а также проконсультироваться по любому вопросу связанному с покупкой, продажей, чартером яхт позвоните по телефону **+7(918)465-66-44**.

ОГЛАВЛЕНИЕ

ОГЛАВЛЕНИЕ	2
ХАРАКТЕРИСТИКИ	7
Обзор	7
Основная информация	7
Размеры	7
Скорость, вместимость и масса	7
Размещение	8
Корпус и палуба	8
Информация о двигателе	8
ПОДРОБНОЕ ОПИСАНИЕ	9
MAIN DESCRIPTION	9
BENETEAU OCEANIS 45 - SEA JULES - MEDIA:	9
EQUIPED FOR CRUISING:	9
BENETEAU OCEANIS 45 - SEA JULES - WALKTHROUGH:	10
BENETEAU OCEANIS 45 - SEA JULES - ACCOMODATIONS:	12
BENETEAU OCEANIS 45 - SEA JULES - MAIN CABIN:	13
BENETEAU OCEANIS 45 - SEA JULES - PANTRY	13
BENETEAU OCEANIS 45 - SEA JULES - STORAGE LOCKER	13
BENETEAU OCEANIS 45 - SEA JULES - AFT HEAD	14
BENETEAU OCEANIS 45 - SEA JULES - FORWARD ENSUITE HEAD	14
BENETEAU OCEANIS 45 - SEA JULES COCKPIT	14
BENETEAU OCEANIS 45 - SEA JULES HELM	14
BENETEAU OCEANIS 45 - SEA JULES - SWIM PLATFORM	15
BENETEAU OCEANIS 45 - SEA JULES - DECK + HULL	15
BENETEAU OCEANIS 45 - SEA JULES RIG	15
BENETEAU OCEANIS 45 - SEA JULES - SAILS & CANVAS	15
BENETEAU OCEANIS 45 - SEA JULES ELECTRONICS	16
BENETEAU OCEANIS 45 - SEA JULES - ELECTRICAL	16

BENETEAU OCEANIS 45 - SEA JULES MECHANICAL	16
BENETEAU OCEANIS 45 - SEA JULES SAFETY	17
BENETEAU OCEANIS 45 - SEA JULES TENDER	17
DISCLAIMER	17
Исключения	17
Отказ от ответственности	17
ФОТОГРАФИИ	18
Beneteau Oceanis 45 - Sea Jules - 2	18
Beneteau Oceanis 45 - Sea Jules - 1	18
Beneteau Oceanis 45 - Sea Jules - 3	18
Beneteau Oceanis 45 - Sea Jules - 4	18
Beneteau Oceanis 45 - Sea Jules - 5	18
Beneteau Oceanis 45 - Sea Jules - 6	18
Beneteau Oceanis 45 - Sea Jules - 7	19
Beneteau Oceanis 45 - Sea Jules - 8	19
Beneteau Oceanis 45 - Sea Jules - 9	19
Beneteau Oceanis 45 - Sea Jules - 10	19
Beneteau Oceanis 45 - Sea Jules - 11	19
Beneteau Oceanis 45 - Sea Jules - 15	19
Beneteau Oceanis 45 - Sea Jules - 17	20
Beneteau Oceanis 45 - Sea Jules - 16	20
Beneteau Oceanis 45 - Sea Jules - 18	20
Beneteau Oceanis 45 - Sea Jules - 19	20
Beneteau Oceanis 45 - Sea Jules - 21	20
Beneteau Oceanis 45 - Sea Jules - 22	20
Beneteau Oceanis 45 - Sea Jules - 23	21
Beneteau Oceanis 45 - Sea Jules - 24	21
Beneteau Oceanis 45 - Sea Jules - 25	21
Beneteau Oceanis 45 - Sea Jules - 26	21

Beneteau Oceanis 45 - Sea Jules - 27	21
Beneteau Oceanis 45 - Sea Jules - 28	21
Beneteau Oceanis 45 - Sea Jules - 29	22
Beneteau Oceanis 45 - Sea Jules - 30	22
Beneteau Oceanis 45 - Sea Jules - 31	22
Beneteau Oceanis 45 - Sea Jules - 32	22
Beneteau Oceanis 45 - Sea Jules - 33	22
Beneteau Oceanis 45 - Sea Jules - 34	22
Beneteau Oceanis 45 - Sea Jules - 35	23
Beneteau Oceanis 45 - Sea Jules - 36	23
Beneteau Oceanis 45 - Sea Jules - 37	23
Beneteau Oceanis 45 - Sea Jules - 38	23
Beneteau Oceanis 45 - Sea Jules - 39	23
Beneteau Oceanis 45 - Sea Jules - 39a	23
Beneteau Oceanis 45 - Sea Jules - 40	24
Beneteau Oceanis 45 - Sea Jules - 41	24
Beneteau Oceanis 45 - Sea Jules - 42	24
Beneteau Oceanis 45 - Sea Jules - 43	24
Beneteau Oceanis 45 - Sea Jules - 44	24
Beneteau Oceanis 45 - Sea Jules - 45	24
Beneteau Oceanis 45 - Sea Jules - 46	25
Beneteau Oceanis 45 - Sea Jules - 47	25
Beneteau Oceanis 45 - Sea Jules - 48	25
Beneteau Oceanis 45 - Sea Jules - 49	25
Beneteau Oceanis 45 - Sea Jules - 50	25
Beneteau Oceanis 45 - Sea Jules - 51	25
Beneteau Oceanis 45 - Sea Jules - 52	26
Beneteau Oceanis 45 - Sea Jules - 53	26
Beneteau Oceanis 45 - Sea Jules - 55	26

Beneteau Oceanis 45 - Sea Jules - 54	26
Beneteau Oceanis 45 - Sea Jules - 56	27
Beneteau Oceanis 45 - Sea Jules - 57	27
Beneteau Oceanis 45 - Sea Jules - 58	27
Beneteau Oceanis 45 - Sea Jules - 59	27
Beneteau Oceanis 45 - Sea Jules - 60	28
Beneteau Oceanis 45 - Sea Jules - 61	28
Beneteau Oceanis 45 - Sea Jules - 62	28
Beneteau Oceanis 45 - Sea Jules - 63	28
Beneteau Oceanis 45 - Sea Jules - 64	28
Beneteau Oceanis 45 - Sea Jules - 65	28
Beneteau Oceanis 45 - Sea Jules - 67	29
Beneteau Oceanis 45 - Sea Jules - 66	29
Beneteau Oceanis 45 - Sea Jules - 68	29
Beneteau Oceanis 45 - Sea Jules - 69	29
Beneteau Oceanis 45 - Sea Jules - 70	30
Beneteau Oceanis 45 - Sea Jules - 71	30
Beneteau Oceanis 45 - Sea Jules - 72	30
Beneteau Oceanis 45 - Sea Jules - 73	30
Beneteau Oceanis 45 - Sea Jules - 75	31
Beneteau Oceanis 45 - Sea Jules - 74	31
Beneteau Oceanis 45 - Sea Jules - 76	31
Beneteau Oceanis 45 - Sea Jules - 77	31
Beneteau Oceanis 45 - Sea Jules - 78	31
Beneteau Oceanis 45 - Sea Jules - 79	31
Beneteau Oceanis 45 - Sea Jules - 80	32
Beneteau Oceanis 45 - Sea Jules - 81	32
Beneteau Oceanis 45 - Sea Jules - 82	32
Beneteau Oceanis 45 - Sea Jules - 83	32

Beneteau Oceanis 45 - Sea Jules - 84	32
Beneteau Oceanis 45 - Sea Jules - 86	32
Beneteau Oceanis 45 - Sea Jules - 87	33
Beneteau Oceanis 45 - Sea Jules - 92	33
Beneteau Oceanis 45 - Sea Jules - 93	33
Beneteau Oceanis 45 - Sea Jules - 93a	33
Beneteau Oceanis 45 - Sea Jules - 94	34
Beneteau Oceanis 45 - Sea Jules - 95	34
Beneteau Oceanis 45 - Sea Jules - 96	34
Beneteau Oceanis 45 - Sea Jules - 1e	34
Beneteau Oceanis 45 - Sea Jules - 1f	34
Beneteau Oceanis 45 - Sea Jules - 93b	34
Beneteau Oceanis 45 - Sea Jules - 93c	35
КОНТАКТЫ	36
Контактная информация	36
Телефоны	36
Время работы	36
Адрес	36

ХАРАКТЕРИСТИКИ

Обзор

The Beneteau Oceanis 45 "Sea Jules" boasts the sleek styling and well-balanced hull that contributed to this model winning the prestigious European Sailboat of the Year award when first introduced in 2012. This single owner boat is turn key, ready for blue water and can take you wherever you want to go in comfort, style and safety. With her chined hull design, large cockpit, open deck plan and folding transom platform, Sea Jules will deliver in blue water and at anchor. She features roller furling sails with all controls leading aft, so there is no need to leave the cockpit. And with the main sheet mounted on the cockpit arch the full enclosure will keep you dry in heavy weather. Below decks you'll find a spacious, well appointed, modern interior. Well maintained and in terrific shape Sea Jules shows like an almost new boat and is ready to set sail on her next adventure. If you are looking for an award winning cruising boat, capable of taking you wherever you want to go, don't miss out on Sea Jules. Call for an appointment today!

Основная информация

Тип судна: Sloop

Модельный год: 2014

Год постройки: 2014

Страна: United States

Размеры

Длина общая: 45' 0" (13.72m)

Ширина: 14' 10" (4.52m)

Макс. осадка: 6' 0" (1.83m)

Трапы: 63' 0" (19.20m)

Скорость, вместимость и масса

Крейс. скорость: 7 Kts. (8 MPH)

Водоизмещение: 31170 Pounds

Вместимость воды: 140 Gallons

Вместимость сточного бака: 38 Gallons

Объем топливного бака: 52 Gallons

Размещение

Всего кают: 2

Всего коек: 3

Всего ком. состава: 2

Корпус и палуба

Материал корпуса: Fiberglass

Информация о двигателе

Двигатели: 3

Производитель: Yanmar

Модель: 4JH5E

Тип двигателя: Inboard

Тип топлива: Diesel

ПОДРОБНОЕ ОПИСАНИЕ

MAIN DESCRIPTION

The Beneteau Oceanis 45 “Sea Jules” boasts the sleek styling and well-balanced hull that contributed to this model winning the prestigious European Sailboat of the Year award when first introduced in 2012. This single owner boat is turn key, ready for blue water and can take you wherever you want to go in comfort, style and safety. With her chined hull design, large cockpit, open deck plan and folding transom platform, Sea Jules will deliver in blue water and at anchor. She features roller furling sails with all controls leading aft, so there is no need to leave the cockpit. And with the main sheet mounted on the cockpit arch the full enclosure will keep you dry in heavy weather. Below decks you’ll find a spacious, well appointed, modern interior. Well maintained and in terrific shape Sea Jules shows like an almost new boat and is ready to set sail on her next adventure. If you are looking for an award winning cruising boat, capable of taking you wherever you want to go, don’t miss out on Sea Jules. Call for an appointment today!

BENETEAU OCEANIS 45 - SEA JULES - MEDIA:

To view media files on Sea Jules type or cut and paste these links (case sensitive) into your web browser:

Video Tour:

Virtual Tour:

Photo Slide Show:

San Diego Distributor Video Tour – 2018 Model:

Manufacturers Brochure:

Manufacturer’s Model Website:

EQUIPED FOR CRUISING:

Sea Jules is equipped for long distance cruising and includes many big ticket features the cruising sailor will appreciate: The Kato Arch davit system provides a convenient and easy way to stow the tender, so you don't have to tow it or man handle it on and off the foredeck. It also is a platform for the solar array and has an extension for a wind generator, if one is desired; but with the 660 watt power of the Kyocera solar array, it may not be necessary. The array and expanded new AGM house batteries provide plenty of power while exploring locations remote from marinas, allowing you to be self-sufficient at anchor or on a mooring; plus if its just too hot, and the 12 volt

fans are not doing the trick, the generator is large enough to run the AC units. The RIB tender with trim tabs, new nav lights and an electric-start 15 hp outboard, will get you ashore fast and in comfort. The dinghy comes with a bow locker and fuel tank attachment to ensure plenty of exploration around the islands! The full cockpit enclosure is a key feature to extending the season or traveling south and offshore and will keep you warm, dry and bug free. The EPIRP, AIS and radar are must haves for coastal and offshore passages, as is the ditch bag with safety gear that is on board; and you'll be glad to have the whisker pole when passagemaking off the wind. If you want to go to the Bahamas and the Islands or even north to New England, the Rocna anchor with all chain rode and secondary plow anchor are what you will need to hold ground with confidence. Also, when visiting marina's where bow in is the only option and the finger piers are short, gates have been installed at the bow, so you can get on and off without tripping up on the life lines. With these features and more Sea Jules is truly a turn key cruising boat. The current owner has already added the things they needed, so you won't have to!

BENETEAU OCEANIS 45 - SEA JULES - WALKTHROUGH:

COCKPIT: The spacious cockpit features a large aft bench with seating for six behind two independent helm stations, port and starboard. Each featuring a stainless steel, leather wrapped destroyer wheel, magnetic compass, B&G multifunction display and cup holders. The port station also includes engine panel, throttle/gear shift, and controls for the auto-pilot, bow thruster, windless control and chain counter. A large B&G Chart Plotter is mounted between the two helm stations, under the cockpit table. A manual bilge pump is found at the starboard helm station, with a Yamaha outboard engine mounted on the port side at the stern. Moving forward of the helm stations the cockpit features bench seating for 6. A large, fixed, dual folding table with two top access insulated coolers is center mounted. Two stereo speakers are mounted port and starboard beneath the aft bench seat. Lighting is provided by deck lights, lights mounted in the arch and a removable lamp that is mounted on the table. Two lockers under the port and starboard bench seats and two large lazarette lockers offer ample storage in this area of the yacht. The propane locker is center mounted under the deck at the stern. Two Harken 46 2-Speed self-tailing electric winches for foresail trim are mounted on the cockpit coaming just forward of the helm stations. A Harken 2-Speed self-tailing electric winch is mounted on the port cabin top and a Harken 40 2-Speed self-tailing winch is mounted on the starboard cabin top. All running rigging lead aft to the cockpit. The cockpit is protected from the sun and sea by a full enclosure. **SWIM PLATFORM:** The stern of the yacht converts to a large full beam swim/boarding platform. The aft bench and transom section lower outward under power, to create the platform. This is one of the terrific features of the yacht. Extending from the cockpit seamlessly, the platform creates a fantastic area to enjoy the water at anchor, while also giving tenders a large platform to pull along side and tie up. **TOPSIDES:** Moving forward the deck is protected by stainless steel bow and stern railings connected by dual lifelines running the length of the deck port and starboard; gates are found at the cockpit, port and starboard, at the bow port and starboard and at the stern. A Lifesling man overboard recovery system is mounted on the starboard stern rail, with the tender outboard mounted on the port stern rail. The tender davit system with solar array atop is found at the stern. Five hatches are found on the cabin top, along with five solar fan/vents and two stainless

steel hand rails running along the port and starboard top sides. Five opening portlights are integrated into 5 fixed portlights along the cabin sides. Six fixed portlights are integrated into the hull. Jib tracks run along on the port and starboard side decks, with cleats found at the bow, stern and mid-ship. A dual stainless steel anchor roller mount is found at the bow along with a chain locker which includes a washdown spigot and the hand held windless control. The bow is completed by an electric windless with vertical capstan and two cleats. Moving aft a large below deck locker provides ample space for fenders, dock lines, boat hooks and wash down gear. The double spreader, fractional rig features a Fcnor headsail roller furler, in mast mainsail roller furling, cockpit arch mounted main sheet, boom vang and whisker pole. The standing rigging is stainless wire cable. A Kato tender davit system is found at the stern with a solar array on top.

MAIN CABIN: Entering the main cabin from the cockpit via a center mounted companionway, the galley is to port. Going forward a large salon opens up with seating for eight. The main cabin, as well as the rest of the interior, features a sleek, airy modern style from the Nauta Design.

Salon: With a large seating area to starboard and a configurable double seat/table design to port, the salon offers a bright and spacious area for the crew to gather. Along the port side there are two seats and a table that can be configured as a love seat with chart table or two seats with a table between. Opposite, on the port side, is a large U shaped settee with a table that can be lowered create a double berth. Shelves, storage lockers and fixed portlights are found along the hull, which provides the salon a very open and bright atmosphere during the day. In the evening the salon offers overhead and ambient lighting. Ventilation is provided by an overhead opening hatch, three side mounted opening portlight and two solar fan ports, air conditioning and two forward bulkhead mounted fans.

Galley: The L-shaped galley is located in the aft port section of the main cabin. The forward counter top includes a front access refrigerator and a top access freezer. The Force 10 stove and double stainless steel sink with counter inserts are along the port side. Storage is provided by over and under counter lockers.

FORWARD CABIN: Moving forward from the salon, the forward stateroom features a center-mounted double berth with an arm mounted, flat screen on the port side. Plenty of storage is provided by shelving and lockers running along the port and starboard sides, with a drawer located under the berth. Additional lockers are found in the aft port section of the cabin. Light comes from two large, fixed portlights and three overhead hatches during the day and four overhead lights and ambient lighting in the evening. Ventilation is provided by the overhead opening hatches air conditioning and two forward bulkhead mounted fans.

FORWARD CABIN ENSUITE HEAD: Found in the aft, starboard section of the forward cabin, the ensuite head features a separate shower, electric marine toilet, and a sink with hot and cold running water. Entering the head, the marine toilet is on the starboard side, with two storage lockers above. A sink and counter are found along the aft bulkhead, with a mirrored mounted above. The separate shower stall is to the right of the sink. Other features include a 120 vac outlet, arm mounted vanity mirror, and towel hooks. Light comes from an opening overhead hatch during the day and three overhead lights in the evening. Ventilation is provided by air conditioning and the overhead hatch.

AFT CABIN: The aft cabin is found aft of the salon on the starboard side. The cabin features a double berth and private access to the aft head. Shelving runs along the starboard side of the berth. A hanging locker is found on the forward, starboard bulkhead. Light is provided by two fixed, one opening portlight and an overhead hatch during the day. At night there are two overhead lights and two reading lights on either side of the berth. Ventilation is provided by an A/C vent, and the opening portlight and hatch.

AFT

HEAD:The aft head is located opposite the galley on the starboard side with separate doorways to the main cabin and aft stateroom. The head features a separate shower, an electric marine toilet and a sink with hot and cold running water. Entering the head from the main cabin, the shower w/glass door is to the left. Next to the shower, the marine head is found on the starboard side. A countertop mounted sink sits caddy corner along the starboard side right of the head, with two mirrored lockers above and an additional locker below. A 120 vac outlet is found below the sink and a towel hook on the aft bulkhead. Light comes from two fixed and one opening portlight during the day and three overhead lights in the evening. Ventilation is provided by air conditioning and the opening portlight.

AFT PANTRY:Located aft of the galley is a pantry or workshop space. An additional storage room is accessed by a door in the aft bulkhead of the pantry. This is a multi-functional area that is missing and needed in many long range cruising yachts. On the port side, there is a locker and drawer under a counter with a storage locker and shelf above. Further aft are two vertical cubbies with a port light above. A bench is found along the aft section of the pantry with access to the storage area above. Light comes from two fixed portlights and an opening overhead hatch during the day and two overhead lights and a reading light in the evening. Ventilation is provided by overhead hatch. Overhead lights and a reading lamp provide lighting, while an overhead hatch provides ventilation.

ENGINE COMPARTMENT:The engine compartment is found under the cockpit companionway stairs. Front and side panels provide 270 degree access to the engine. The generator is accessed by panels in the storage area and aft cabin.

BENETEAU OCEANIS 45 - SEA JULES - ACCOMODATIONS:

MASTER CABIN:The master cabin is found forward of the salon and features:- Private cabin with solid door- Double berth; center (sleeps 2)- Under berth storage drawer- Under berth utility locker containing A/C unit, bow thruster components, water tank- Hanging locker; port side- 2 Storage lockers with shelving atop port side- Storage locker, overhead mounted, port side- 4 Storage lockers, overhead mounted, port and starboard forward- Shelving with fiddles, port and starboard sides- Proscan flatscreen TV- 4 Overhead halogen lights; 12 vdc- Ambient lighting under overhead lockers- Cockpit table lamp, stowed starboard side aft- 2 120 vac outlet; port side and starboard sides aft- 2 A/C registers; port and starboard sides aft- A/C control panel; port side aft- 3 Opening overhead hatches with retractable screens and shades- 2 Fixed portlights with curtains, port and starboard sides- 2 Hella turbo fan; 12 vdc; forward bulkhead mounted- Solar fan vent, overhead port side aft- Kidde dry chemical fire extinguisher- Ensuite head access; aft bulkhead starboard

AFT CABIN:The aft cabin is accessed at the aft starboard side of the salon between the aft head and companionway and includes:- Private cabin with solid door- Double berth (sleeps 2)- Under berth utility lockers; containing batteries and a water tanks- Hanging locker with shelf atop; starboard side- Shelving along starboard side- 2 Overhead halogen lights; 12 vdc- 2 Reading lamps; 12 vdc- 120 vac outlet- A/C register- A/C control panel- Opening overhead hatch with retractable shade and screen- Opening portlight with screen- 2 Fixed portlights with curtains- Hella turbo fan; 12 vdc- Kiddie dry chemical fire extinguisher- Shared head access, forward starboard corner- Battery switches; under berth forward- Engine, genset & cockpit utility locker access panels

SALON SETTEES:- Starboard settee convert to a double berth

BENETEAU OCEANIS 45 - SEA JULES - MAIN CABIN:

The main cabin is entered from the cockpit, six steps down via a center companionway and houses the salon, galley and nav station: **SALON:**The salon occupies the forward section of the main cabin and features:- Starboard side U-Settee, seats 8, with fixed pedestal table; converts to a double berth- Fixed bench seat at settee table opposite settee- Configurable seating area with two seats and a table, port side; can be configured as a love seat with chart table or two seats with table between.- Shelving and storage lockers and fiddles running length of salon, port & starboard side- Storage and utility lockers below and behind seats and settee- Vizio 32' flat screen TV; model D32f-E1- Poly Planar Marine Sound System; model MRD 85i, with remote control- 2 Poly Planar Stereo speakers- SiriusXM Satellite Radio unit- 2 Opening portlights w/screens- 4 fixed portlights w/curtains- 1 Overhead opening hatch, with retractable screen and shade- 9 Overhead halogen lights; 12 vdc- 2 Reading lamps; 12 vdc- 2 Hella Turbo Fan; 12 vdc- 1 A/C Register- DC electrical control panel- 2 120 vac outlets**NAV STATION:**The navigation station is on the port side of the salon and includes:- Navigation table with lift top; can be configured as forward or aft facing- 2 countertop access lockers- 4 under counter shelves- Reading lamp; 12 vdc- B&G VHF radio with AIS reception; model V50- B&G hand held VHS radio; model H50- iCOM hand held VHS radio; model IC-M36- AC Control panel**GALLEY:**The galley occupies the aft port section of the main cabin and features a L layout comprised of a port side counter and forward counter:**Port Side Counter:-** Double stainless steel sink with counter top inserts; hot & cold running water, filtered cold running water, foot pump sea water- Force 10 Gourmet Galley Range; 3 burner gimble propane stove/oven- Under sink locker with trash can- Drawers under sink- Under deck lockers- 4 Over counter lockers- Danby microwave oven; housed in one of the top mounted lockers; model DMW077BLSDD- Opening portlight with screen- Fixed portlight with curtain- Overhead solar fan vent- Bulkhead mounted Weems & Plath ships clock- 120 vac outlet**Forward Counter:-** Large countertop with top access freezer unit; vdc, Vitrifrigo model C130L DX O6- Under counter refrigerator unit; 12-24 vdc, Vitrifrigo model BN85BT *BNT*- Portable Dometic ice maker; model HZB-12SA

BENETEAU OCEANIS 45 - SEA JULES - PANTRY

The pantry is found aft of the galley and features:- Chest of drawers with shelf on top and locker above- 2 vertical cubbies- Bench seat- Access to a large storage locker; aft bulkhead- Reading lamp; 12 vdc- Generator control panel- Solar panel control system- 2 bulkhead mounted hooks- 2 Fixed port lights, with shades- 2 Overhead halogen lights- Overhead opening hatch, with retractable screen and shade

BENETEAU OCEANIS 45 - SEA JULES - STORAGE LOCKER

Found aft of the pantry, the large storage locker features:- Access through a door in the pantry aft bulkhead- Overhead access or via removable overhead panels adjoining the storage locker under the port cockpit bench seat- Generator access panel, port side- Vertical storage cubbies along port side- Fixed portlight

BENETEAU OCEANIS 45 - SEA JULES - AFT HEAD

The aft head is located on the starboard side opposite the galley, doubles as an ensuite head for the aft stateroom and includes:- Bemis electric marine toilet with fresh or salt water flush- Separate shower w/plexi-glass door; including: - Shower wand, hot & cold running water - Shower wand mount - Soap dish - Built-in storage rack for shampoo, conditioner, etc. - Fixed portlight - Overhead halogen light; 12 vdc- Molded sink w/hot and cold running water- Counter top surrounded by wooden fiddle- Under sink locker- 2 mirrored over counter lockers- Towel hook- Cup holder- 120 vac outlet- 3 Overhead lights; halogen 12 vdc- Overhead solar fan/vent- Fixed portlight- Opening portlight- Air conditioning register

BENETEAU OCEANIS 45 - SEA JULES - FORWARD ENSUITE HEAD

The forward ensuite head is located at the aft starboard side of the forward cabin and includes: - Bemis electric marine toilet- Separate shower w/plexi-glass door; including: - Shower wand, hot & cold running water - Shower wand mount - Built-in storage rack for shampoo, conditioner, etc. - 2 Towel hooks - Overhead halogen light; 12 vdc- Molded sink w/hot and cold running water- Counter top fronted by a wooden fiddle- Under sink locker- Mirror mounted above sink- Retractable vanity mirror mounted left of sink- 2 Storage lockers above head- Towel hook- Cup holder- 120 vac outlet- 2 Overhead lights; halogen 12 vdc- A/C Register- Overhead solar fan/vent- Overhead opening hatch with retractable shade and screen

BENETEAU OCEANIS 45 - SEA JULES COCKPIT

The cockpit is in the stern of the boat and features: - Teak Deck- Seating for 12: - Port and starboard bench seating for 6 passengers - Aft bench seating for helmsman and 5 passengers- Cockpit cushions- 2 Folding portable seat backs- Dual wheel helm stations with instrument clusters- Chartplotter, center mounted under cockpit table- Center mounted cockpit table with 2 folding leaves and 2 insulated top access coolers- 2 Poly Planar Stereo speakers- Main Sheet Arch with 2 halogen lights, 12 vdc- Deck level night lighting- Full cockpit enclosure, Bimini, Dodger, side curtains- Electric fold down swim platform/transom- 2 Large transom lockers; port & starboard- Propane locker; transom center- 2 Storage locker; under port and starboard bench seats- Kato Tender davit system, with solar panels, aft mounted- Companionway to salon with French doors; center forward

BENETEAU OCEANIS 45 - SEA JULES HELM

Dual helm stations, are found at the stern port and starboard and include: - Leather covered stainless steel Lewmar destroyer wheels- Plastimo binnacle compasses- B&G T12 Chart Plotter; center mounted at cockpit table- Harken Electric foresail winch controls- Port Station: - Quick Bow Thruster control; model THC 1022 - Windless control panel - Quick Windless chain

counter; model CHC 120Z M - B&G Auto Pilot controls - B&G Multi-Function Display; Model T7 - Engine instrument panel - Engine throttle/gear shift - Hand hold - Cup holder- Starboard Station: - B&G Multi-Function Display; Model T7 - 3 Cup holders

BENETEAU OCEANIS 45 - SEA JULES - SWIM PLATFORM

The aft bench seat and transom lower to create a large swim/boarding platform that is open to the cockpit and includes:- Shower wand with hot and cold running water- Swim ladder

BENETEAU OCEANIS 45 - SEA JULES - DECK + HULL

- Fiberglass construction- Forward crash bulkhead- Bulb keel- Sail drive with 3 blade propeller; model SD69- Quick bow thruster; model BTQ1808512- Quick electric windless with chain gypsy- Double stainless steel anchor mount w/rollers- 55 lb Rocna scoop anchor w/roll bar with 200' of G4 chain- Plow anchor with 100' chain & 100' rode- Anchor locker (foredeck access) with: - Chain well - Washdown spigot & hose - Quick multipurpose windless hand held control panel- Foredeck locker; deck access including: - Dock lines - 5 Fenders - Bosun's chair - 50 amp shore power line - 3 Boat hooks- Propane locker- 2 Transom lockers- 2 Cockpit lockers- 2 Harkin 46., 2 speed self-tailing electric winchs; cockpit coming mounted, port & starboard- Harkin 40, 2 speed winch; cockpit cabin top mounted, starboard side- Harkin Unipower 900, 2 speed electric winch; cockpit cabin top mounted, port side- Winch handles- 2 Foresail lead tracks; port & starboard- 2 Check blocks- Sheet storage bags; cockpit mounted- 7 Opening hatches- 5 Opening portlights; cabin side mounted- 11 Fixed portlights- 4 Solar fan vents- Stainless steel bow pulpit and stern rails port and starboard, connected by double life lines with port & starboard gates forward of cockpit, at the bow and at the stern- Stainless steel Kato davit system, with solar array atop- Magma handrail mounted BBQ grill w/propane tanks- Edson outboard motor mount- 8 Cleats; 2 at bow, 2 midship, 4 at stern- Emergency ladder, in compartment at stern- QuickStep portable boarding ladder- Taylor Made Dock Step two step dock stairs- Water hose- Dock lines- Miscellaneous cleaning supplies & brushes- Navigation, running & anchor lights- Fuel & water fills, holding tank pump-out port- 5 Gallon jerry can- Beneteau gelcoat repair and maintenance kit- Deck spare parts kit

BENETEAU OCEANIS 45 - SEA JULES RIG

- Fractional sloop rig- Aluminum double spreader mast with in mast roller furling system; US Spars, type Oceanis 45 E- Aluminum boom; US Spars, type OC 45 ICW- Forespare aluminum whisker pole; Model LC-13-24-UXP-UXP- Facnor headsail roller furling system; model LS180- Stainless steel wire standing rigging- Boom vang, stainless steel with multi-purchase adjustment- Arch mounted mainsheet system- All running rigging leads aft to cockpit through stop chocks

BENETEAU OCEANIS 45 - SEA JULES - SAILS & CANVAS

- Niel Pryde International Mainsail, 454.8 sq.ft.- Niel Pryde International Genoa, 506 sq.ft- Full Cockpit Enclosure; by Cover Loft Marine Canvas - Dodger - Cockpit Bimini, w/dual overhead sighting windows - Cockpit enclosure curtains- Main sail cover

BENETEAU OCEANIS 45 - SEA JULES ELECTRONICS

- Vizio 32' flat screen TV; model D32f-E1- Proscan flat screen TV- Poly Planar Marine Sound System; model MRD 85i, with remote control- 4 Poly Planar Stereo speakers- SiriusXM Satellite Radio unit- EPIRB- B&G VHF radio with AIS reception; model V50- AIS Transceiver; model NAIS-400 Class B- AIS/VHF Antenna splitter; model NSPL-400- B&G hand held VHS radio; model H50- ICOM hand held VHS radio; model IC-M36- B&G Broadband G3 Radar- B&G T12 Chart Plotter; center mounted at cockpit table- 2 B&G Multi-Function Displays; Model T7- B&G Auto Pilot- Garmin hand held GPS; model inReach SE+- Red Port WiFi system- BadElf GPS Lightning Connector for iPod Touch, iPhone, iPad- Navionics+ Marine chart chip; US & Canada

BENETEAU OCEANIS 45 - SEA JULES - ELECTRICAL

- 12 VDC electrical system panel- 120 VAC electrical system panel- Generator control panel- Generator/Shore Power switching panel- Cummins Onan Quiet Diesel Series 6/7.5 QD Generator, 6-7.5 kw; hours 1,280; model 7.5MDKBJ-1101C- 2 Kyocera solar panels; 660 watts total- Outback Power Systems solar charging system control panel- Battery switching panel- Sine Wave inverter- Mastervolt Inverter control panel- Cristec Battery Charger; 12V-60A; model CPS3OEM- Victron Energy Blue Power Battery Monitor; model BMV-712 SMART- Windless breaker- 5 Lifeline 12 vdc batteries in two banks; P/N: GPL-31XT- Druacell Ultra bow thruster battery; P/N SL127MDP- 50 Amp shore power receptacle- 2, 50 Amp shore power cables- 50 Amp/30 Amp shore power Y adapter- 50 Amp/50 Amp adapter

BENETEAU OCEANIS 45 - SEA JULES MECHANICAL

- Yanmar 54 hp 4 cylinder auxiliary diesel engine, fresh water cooled; model 4JH5E hours: 1750 estimated- Yanmar Sail-Drive with 3 blade propeller; model SD69- Quick bow thruster; model BTQ1808512- Centek muffler- Parker Racor fuel filter/water separator, 60 GPH, model 500MA- 3 Raw water strainers- Dometic Cruisair 8,000 btu reverse cycle air conditioning unit; model STQ8-410A-5MR- Dometic Cruisair 16,000 btu reverse cycle air conditioning units; model STQ16-410A-7MR- Dometic sea water pump; model 331566- Mature Pure water filtration system- PAR-MAX4, 4.3 GPM Water System Pump; Model: 31620-0092- 2 PAR-MAX4, 3.8 GPM Water Pump; model: 31631-1092- PAR-MAX 4.0 Washdown Pump, 3.5 GPM; model 32605-0092- Gulper 320 high capacity waste pump; galley sink garbage disposal; 5.3 gpm- Vitrefrigio Refrigerator; 12-24 VDC; model C130L DX 08- Vitrefrigio Freezer; 12-24 VDC; model BN85BT *BNT*- Portable Dometic ice maker; model HZB-12SA- Quick B3 Nautical hot water heater; 10.6 gal; model B34012SLV- Rule-Mate 1100 GPH bilge pump; ; 12 vdc- Generator spare parts kit- Engine spare parts kit- West Marine tool kit- Miscellaneous spare parts kit

BENETEAU OCEANIS 45 - SEA JULES SAFETY

- Lifesling Overboard Rescue System- Throwable Type IV PFD ; model SS- 3 Off-Shore Lifejackets, adult, type I PFD; adult- 2 West Marine Offshore 35 automatic recreational inflatable Type V PFD with Type II performance; adult- 2 West Marine recreational inflatable type V convertible PFD; adult- Crash bag including: EPIRB, flairs, safety gear- Weems + Plath Explorer 7x50 waterproof/floating binoculars- Sirius Signal night visual distress signal for boats; model SOSG-1001- Super Blast marine signal horn- 3 Whistles- Hand held compasses- Solas red parachute signal rocket; expired- 4 hand held flares; expired- Orion Locator PLUS – 4 Marine Signal Kit; expires Nov 2020- Emergency tiller- 3 Kiddie dry chemical fire extinguisher; Type B:C Size 1- Emergency tiller

BENETEAU OCEANIS 45 - SEA JULES TENDER

- Apex R.I.B, 5 person, with trim tabs; model A-10- Yamaha 15 hp outboard engine; model 6AGK F15SEHA- West marine portable fuel tank with gauge; 3 gal- Navisafe navigation light kit; new- Plow anchor with chain and rode- Oars- Inflation foot pump

DISCLAIMER

The Company offers the details of this vessel in good faith but cannot guarantee or warrant the accuracy of this information nor warrant the condition of the vessel. A buyer should instruct his agents, or his surveyors, to investigate such details as the buyer desires validated. This vessel is offered subject to prior sale, price change, or withdrawal without notice.

Исключения

При продаже яхты исключаются личные вещи владельца.

Отказ от ответственности

Компания предоставляет описание судна или яхты добросовестно, но не может гарантировать точность этой информации, а также не ручается за техническое состояние. Покупатель должен проинструктировать своих агентов или оценщиков исследовать представленную информацию более подробно, по собственному желанию. Продажа судна или яхты, изменение цены или снятие с продажи будет происходить без предварительного уведомления.

ФОТОГРАФИИ

Beneteau Oceanis 45 - Sea Jules - 1



Beneteau Oceanis 45 - Sea Jules - 2



Beneteau Oceanis 45 - Sea Jules - 3



Beneteau Oceanis 45 - Sea Jules - 4



Beneteau Oceanis 45 - Sea Jules - 5



Beneteau Oceanis 45 - Sea Jules - 6



Beneteau Oceanis 45 - Sea Jules - 7



Beneteau Oceanis 45 - Sea Jules - 8



Beneteau Oceanis 45 - Sea Jules - 9



Beneteau Oceanis 45 - Sea Jules - 10



Beneteau Oceanis 45 - Sea Jules - 11



Beneteau Oceanis 45 - Sea Jules - 15



Beneteau Oceanis 45 - Sea Jules - 16



Beneteau Oceanis 45 - Sea Jules - 17



Beneteau Oceanis 45 - Sea Jules - 18



Beneteau Oceanis 45 - Sea Jules - 19



Beneteau Oceanis 45 - Sea Jules - 21



Beneteau Oceanis 45 - Sea Jules - 22



Beneteau Oceanis 45 - Sea Jules - 23



Beneteau Oceanis 45 - Sea Jules - 24



Beneteau Oceanis 45 - Sea Jules - 25



Beneteau Oceanis 45 - Sea Jules - 26



Beneteau Oceanis 45 - Sea Jules - 27



Beneteau Oceanis 45 - Sea Jules - 28



Beneteau Oceanis 45 - Sea Jules - 29



Beneteau Oceanis 45 - Sea Jules - 30



Beneteau Oceanis 45 - Sea Jules - 31



Beneteau Oceanis 45 - Sea Jules - 32



Beneteau Oceanis 45 - Sea Jules - 33



Beneteau Oceanis 45 - Sea Jules - 34



Beneteau Oceanis 45 - Sea Jules - 35



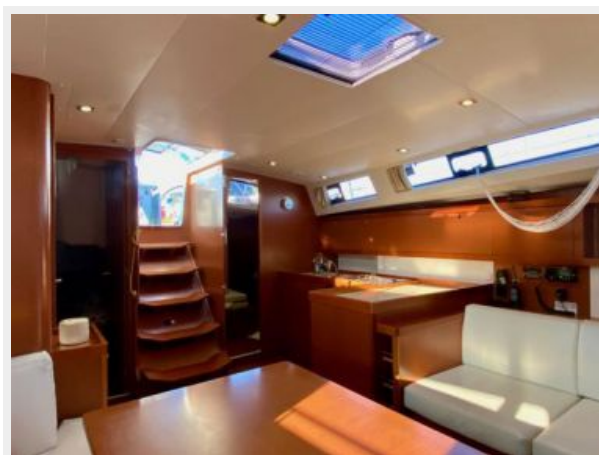
Beneteau Oceanis 45 - Sea Jules - 36



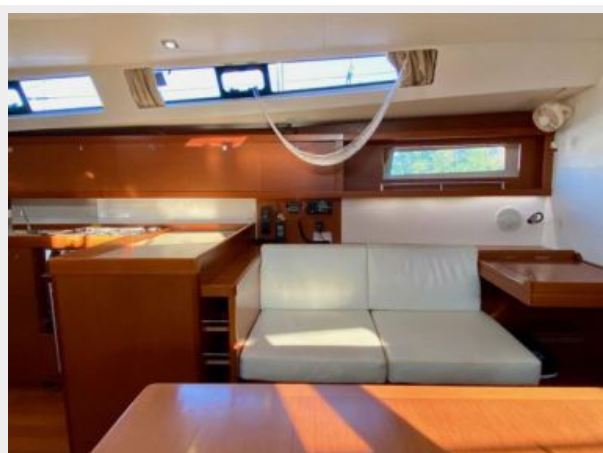
Beneteau Oceanis 45 - Sea Jules - 37



Beneteau Oceanis 45 - Sea Jules - 38



Beneteau Oceanis 45 - Sea Jules - 39



Beneteau Oceanis 45 - Sea Jules - 39a



Beneteau Oceanis 45 - Sea Jules - 40



Beneteau Oceanis 45 - Sea Jules - 41



Beneteau Oceanis 45 - Sea Jules - 42



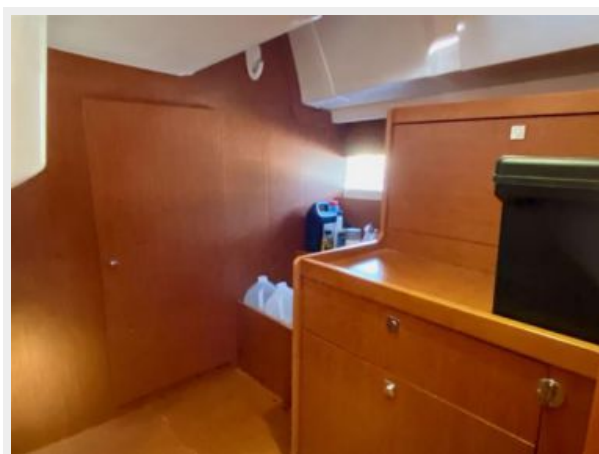
Beneteau Oceanis 45 - Sea Jules - 43



Beneteau Oceanis 45 - Sea Jules - 44



Beneteau Oceanis 45 - Sea Jules - 45



Beneteau Oceanis 45 - Sea Jules - 46



Beneteau Oceanis 45 - Sea Jules - 47



Beneteau Oceanis 45 - Sea Jules - 48



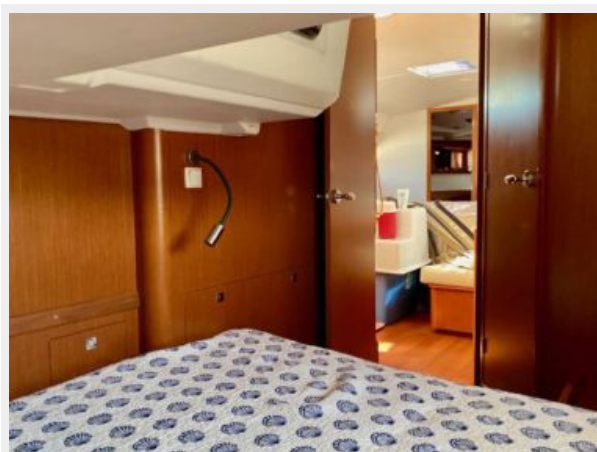
Beneteau Oceanis 45 - Sea Jules - 49



Beneteau Oceanis 45 - Sea Jules - 50



Beneteau Oceanis 45 - Sea Jules - 51



Beneteau Oceanis 45 - Sea Jules - 52



Beneteau Oceanis 45 - Sea Jules - 53



Beneteau Oceanis 45 - Sea Jules - 54



Beneteau Oceanis 45 - Sea Jules - 55



Beneteau Oceanis 45 - Sea Jules - 56



Beneteau Oceanis 45 - Sea Jules - 57



Beneteau Oceanis 45 - Sea Jules - 58



Beneteau Oceanis 45 - Sea Jules - 59



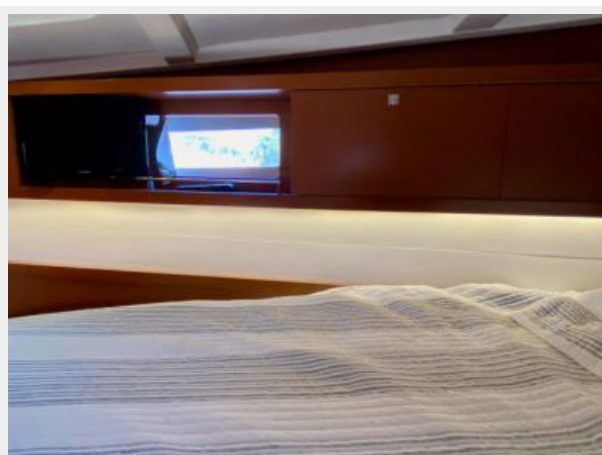
Beneteau Oceanis 45 - Sea Jules - 60



Beneteau Oceanis 45 - Sea Jules - 61



Beneteau Oceanis 45 - Sea Jules - 62



Beneteau Oceanis 45 - Sea Jules - 63



Beneteau Oceanis 45 - Sea Jules - 64



Beneteau Oceanis 45 - Sea Jules - 65



Beneteau Oceanis 45 - Sea Jules - 67

Beneteau Oceanis 45 - Sea Jules - 66



Beneteau Oceanis 45 - Sea Jules - 68



Beneteau Oceanis 45 - Sea Jules - 69



Beneteau Oceanis 45 - Sea Jules - 70



Beneteau Oceanis 45 - Sea Jules - 71



Beneteau Oceanis 45 - Sea Jules - 72



Beneteau Oceanis 45 - Sea Jules - 73

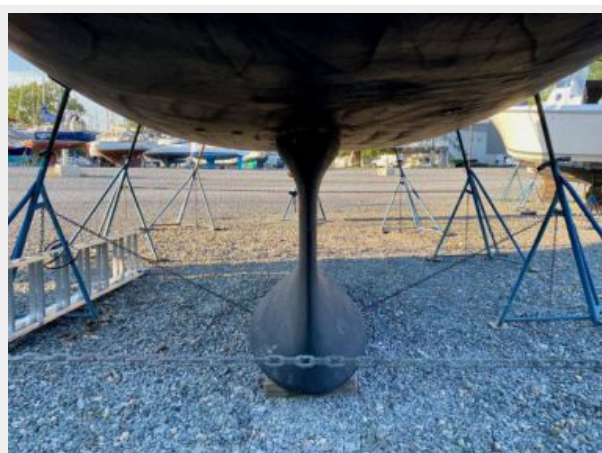


Beneteau Oceanis 45 - Sea Jules - 75

Beneteau Oceanis 45 - Sea Jules - 74



Beneteau Oceanis 45 - Sea Jules - 76



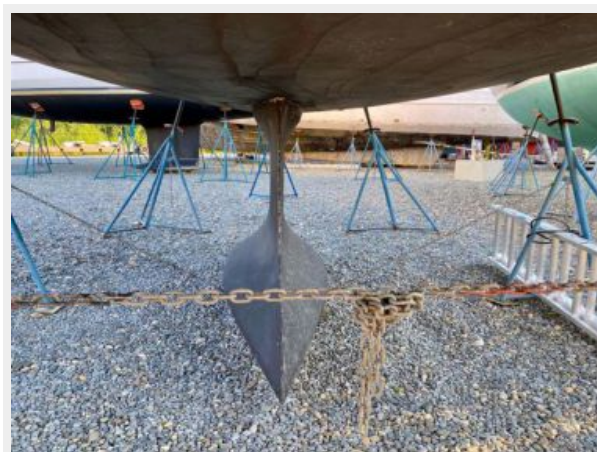
Beneteau Oceanis 45 - Sea Jules - 77



Beneteau Oceanis 45 - Sea Jules - 78



Beneteau Oceanis 45 - Sea Jules - 79



Beneteau Oceanis 45 - Sea Jules - 80



Beneteau Oceanis 45 - Sea Jules - 81



Beneteau Oceanis 45 - Sea Jules - 82



Beneteau Oceanis 45 - Sea Jules - 83



Beneteau Oceanis 45 - Sea Jules - 84



Beneteau Oceanis 45 - Sea Jules - 86



Beneteau Oceanis 45 - Sea Jules - 87



Beneteau Oceanis 45 - Sea Jules - 92



Beneteau Oceanis 45 - Sea Jules - 93



Beneteau Oceanis 45 - Sea Jules - 93a



Beneteau Oceanis 45 - Sea Jules - 94



Beneteau Oceanis 45 - Sea Jules - 95



Beneteau Oceanis 45 - Sea Jules - 96



Beneteau Oceanis 45 - Sea Jules - 1e



Beneteau Oceanis 45 - Sea Jules - 1f



Beneteau Oceanis 45 - Sea Jules - 93b



Beneteau Oceanis 45 - Sea Jules - 93c



КОНТАКТЫ

Андрей Шестаков (Andrey Shestakov) – ведущий яхтенный брокер отдела продаж яхт и судов компании Shestakov Yacht Sales Inc. Официальный представитель Shestakov Yacht Sales Inc. для русскоговорящих клиентов в центральном офисе компании в Майами/Форт Лодердейл/Флорида/США.

Контактная информация

Email: andrey@shestakovyachtsales.com

Web: shestakovyachtsales.com

Телефоны

Краснодарский край: **+7(918)465-66-44**

США, Майами, Флорида: **+1(954)274-4435**

Время работы

Понедельник – Суббота: **9:00 - 21:00**
EDT

Воскресенье: **Закрето**

Адрес



Harbour Towne Marina, 850 NE 3rd St,
STE 213, Dania, FL 33004