

MARTIME — MARLOW



Builder: MARLOW

Year Built: 2018

Model: Motor Yacht

Price: PRICE ON APPLICATION

Location: United States

LOA: 49' 0" (14.94m)

Cruise Speed: 24 Kts. (28 MPH)

Max Speed: 29 Kts. (33 MPH)

Our experienced yacht broker, Andrey Shestakov, will help you choose and buy a yacht that best suits your needs **Martime — MARLOW** from our catalogue. Presently, at Shestakov Yacht Sales Inc., we have a wide variety of yachts available on our sale's list. We also work in close contact with all the big yacht manufacturers from all over the world.

If you would like to buy a yacht **Martime — MARLOW** or would like help answering any questions concerning purchasing, selling or chartering a yacht, please call **+1(954)274-4435**

TABLE OF CONTENTS

TABLE OF CONTENTS	2
SPECIFICATIONS	5
Overview	5
Basic Information	5
Dimensions	5
Speed, Capacities and Weight	5
Accommodations	6
Hull and Deck Information	6
Engine Information	6
DETAILED INFORMATION	7
Notable Upgrades	7
Salon	7
Galley	8
Master Stateroom	8
VIP Stateroom	9
Utility/Laundry Room	9
Command Bridge	9
Upper Aft Deck	10
Deck/Cockpit	10
Electronics	10
Engine and Mechanical	11
Disclaimer	12
Exclusions	12
Exclusions	13
Disclaimer	13
PHOTOS	14
Salon	14
Salon Looking Forward	14

Salon Looking to Starboard	14
Salon Looking to Port	14
Salon Looking Aft	14
Salon (Starboard Aft)	14
Pilothouse	15
Galley	15
Galley	15
Galley Looking to Salon	15
Dining Area	15
Pilothouse Looking Aft	15
Companionway	16
Buddy Bunk	16
Vip	16
Vip Looking to Port	16
Guest Head	16
Guest Shower	16
Master Looking Forward	17
Master Looking Aft	17
Master Looking to Port	17
Master Head	17
Master Head	17
Master Shower	17
Master Rain Shower	18
Utility Room	18
Washer and Dryer	18
Command Bridge	18
Helm	18
Helm	18
Command Bridge Seating	19

Command Bridge Day Head	19
Upper Aft Deck	19
Command Bridge	19
Foredeck	19
Foredeck Looking Aft	19
Cockpit	20
Transome	20
Engine Room	20
Maritime at Night	20
Maritime in Key Largo	20
Maritime in the Bahamas	20
Maritime Flip	21
Maritime- Profile	21
CONTACTS	22
Contact details	22
Telephones	22
Office hours	22
Address	22

SPECIFICATIONS

Overview

Ever since the highly anticipated 2001 debut of Marlow Explorers’ hull #1 to the yachting world, David Marlow and the Marlow Yachts team have been setting and maintaining the standard for yachts in its class. Marlow Yachts are a perfect example of innovation with advanced methods of composite construction and highly customizable layouts and interiors. MARITIME is no exception as she is one of only a few limited-edition Command Bridge 49E Marlow Explorers ever built! She is the fastest 49E in the fleet powered by twin 1000HP 12.9L Caterpillar engines and dually stabilized by a SK16 SeaKeeper AND Naiad fins. This one of a kind floating masterpiece has a professionally designed contemporary interior while keeping the classic exterior lines of the Marlow Yachts bloodline. MARITIME was built for a cruising couple that understands the benefits and comforts of the Marlow Explorer. In addition to the well-equipped engine room and highly customized interior she was built with a substantial navigation package that includes two large Garmin touch screens, autopilot, radar, AIS, and Yacht Controller. She is turn-key, ready to cruise to your next destination.

Basic Information

Category: Motor Yacht	Model Year: 2018
Year Built: 2018	Country: United States

Dimensions

LOA: 49' 0" (14.94m)

Speed, Capacities and Weight

Cruise Speed: 24 Kts. (28 MPH)	Max Speed: 29 Kts. (33 MPH)
Displacement: 123200000 Pounds	Water Capacity: 250 Gallons
Fuel Capacity: 1000 Gallons	

Accommodations

Total Cabins: 2

Total Heads: 3

Hull and Deck Information

Hull Material: Fiberglass

Engine Information

Engines: 2

Manufacturer: Caterpillar

Model: 12.9L

Engine Type: Inboard

Fuel Type: Diesel

DETAILED INFORMATION

Notable Upgrades

- Twin 12.9L 1000HP Caterpillar engines (warranty until January 2023)
- Twin 17kW Onan Generators
- Bow Thruster (15HP)
- Stern Thruster (15HP)
- AGM no maintenance batteries
- Chilled water air conditioning
- 550GPD Bluewater Desalinator
- SeaKeeper gyro stabilizer SK16
- Naiad fin stabilizers model 252
- Professionally designed contemporary interior
- Garmin Navigation Package
- Yacht Controller
- Custom 2 stateroom layout with access from Master Stateroom to Engine Room
- King size bed in Master Stateroom
- Washer and Dryer
- GE Electric Oceanair Blinds
- LED lighting package
- Command Bridge with day head
- Stainless Steel Subzero appliances
- Bennett hydraulic trim tabs
- Dometic Spot Zero (SZ-2000 DPPC)
- V-Kool film on all windows

Salon

As you walk into the salon through the double aft doors from the cockpit, you immediately appreciate the wide beam of MARITIME. This space offers ample room for entertaining and having cocktails with friends and family, or simply relaxing while watching TV. The large windows and light décor allow for natural light to brighten this room while also having the option to shut the Oceanair screens for privacy. This functional room is much larger than salons found in other vessels of this size.

- Teak and Holly floors (matte finish)
- Custom Built-in L-shaped settee to starboard with storage underneath
- Custom Built-in Settee to port with storage underneath
- Samsung 42" TV in aft port corner
- Designer sconces with light dimmer
- Silestone White Zeus Extreme countertops

- Stainless Steel Subzero Refrigerator with Ice maker (aft of settee starboard side)
- Stainless Steel U-Line Wine Cooler (forward of settee on port side)
- Oceanair Screens on all windows
- Ample Storage throughout
- Breaker Panel on forward port side of salon facing aft
- Two wide opening aft doors that open to cockpit
- Bose Home Theatre Sound System

Galley

Just a few steps up and forward of the salon brings you to the Galley/Dining area. This comfortable and cozy space offers a 360 degree view. She is well-equipped with all the galley essentials which will satisfy the most demanding of chefs.

- Franke Kubus rectangular Sink
- Silestone White Zeus Extreme countertops
- Two Stainless Steel Subzero Refrigerator/Freezer combo units
- Disposal at sink
- Grohe Essence Chrome faucet
- Miele 4 burner Cooktop
- Miele Oven with microwave function
- Sharp microwave oven
- Custom cabinetry with ample storage throughout
- Teak and Holly floors (matte finish)
- Large storage for pots and pans (port side)
- Large U-Shape dining area forward with teak top table (opening leaf in the middle for easy access)
- Pilothouse doors on port and starboard
- Oceanair Screens on all windows

Master Stateroom

The master stateroom is full beam. The king size bed is athwartship with abundant drawer storage and hanging lockers. The master head runs along the starboard side of the room, with the headboard to port, and access to the utility/laundry room aft.

- Teak and Holly Floors (matte finish)
- King Size bed
- Samsung LED TV with Satellite
- TOTO Atherton Sink
- Grohe Allure Brilliant Faucet
- Grohe rainshower in master head shower
- Tecma Toilet

- Silestone White Zeus Extreme countertops
- Ample Storage

VIP Stateroom

The VIP is spacious and welcoming for your guests. A large elevated bed sits centerline with drawer storage underneath. Hanging lockers are found to either side of the bed. This room has private access to its own VIP head.

- Teak and Holly Floors (matte finish)
- Samsung LED TV with Apple TV
- TOTO Atherton Sink
- Grohe Allure Brilliant Faucet
- Tecma Toilet
- Silestone White Zeus Extreme countertops
- Ample Storage
- Shelves on port and starboard above bed

Utility/Laundry Room

Located between the Master Stateroom and Engine room you will find the Utility/Laundry Room. This is a room that was designed custom for the owners of MARITIME to house their GE Washer and Dryer along with ample storage and laundry folding space.

- Teak and Holly floors (matte finish)
- GE Washer
- GE Dryer
- Storage
- Laundry Folding Space

Command Bridge

MARITIME is one of only a few limited edition Marlow Explorers in the 49/53 series that were built with a Command Bridge. This air-conditioned living space and helm is a captain's dream! Fully equipped with a Garmin Navigation Package, comfortable seating, and Day Head, this Command Bridge truly sets this yacht apart from others in its class.

- Day Head accessible from inside of Command Bridge (port side)
- Oceanair Screens on all windows
- Oceanair electric retractable screens on windshield
- Teak and holly floors (matte finish)
- Pompanette Captains chair centerline

- Custom L-shaped settee with teak table to starboard
- Pre-wired for TV
- Two 17" Garmin 8617 touch screen displays
- Garmin Autopilot
- Two (2) ICOM M506 VHF radios with 8' VHF Antenna
- Fusion Audio
- Two (2) Caterpillar Displays
- SeaKeeper Display and control unit
- Naiad Display and control unit
- Bow and Stern thruster controls
- Engine controls
- Chart Storage
- Rudder indicator
- Compass
- Emergency Steering joystick
- Digital Tank Gauges
- Spotlight controls
- Navigational equipment breaker panel
- Cupholders at helm

Upper Aft Deck

Aft of the command bridge, the upper aft deck on MARITIME houses an open outdoor space.

Deck/Cockpit

The exterior areas of MARITIME are simple and elegant. They carry the classic lines of the Marlow Explorer while enclosing the magnificent contemporary interior design of the vessel.

- Nonskid exterior decks
- Varnished teak caprail
- Stainless Steel handrail
- Large single bench with storage underneath in cockpit
- FRP table with hi-lo pedestal and folding leaf in cockpit
- Docking station on starboard side of cockpit
- Full walk around covered walkways
- Steps from cockpit to upper aft deck on port side
- Portuguese bridge forward with storage underneath. Access to foredeck in the center
- Painted Hull (Oyster White AwlGrip)

Electronics

- Two 17" Garmin 8617 touch screen displays
- Garmin GSD-24 Digital Black Box Sounder
- Garmin 6kW Open Array Radar with 4' Antenna
- Garmin Autopilot
- Two (2) ICOM M506 VHF radios with 8' VHF Antenna
- Garmin AIS-600 AIS system
- Garmin GXM52 XM Satellite antenna
- Garmin Marine WiFi adapter kit
- Speed Depth and Wind independent displays
- KVH Tracvision HD7 SAT TV dish
- Geosat Rogue wave ethernet with 30" WiFi Antenna
- Spare dome with pre-wiring for satellite phone
- Cradlepoint LTE/wifi modem
- Prewired for Garmin Marine Cameras
- Audio: Fusion Audio

Engine and Mechanical

The engine room has standing headroom and has been designed to allow easy access to all equipment. Placing fuel tanks forward of the engine room allows the full beam to be used for upgraded equipment placement. Attention to detail enables key maintenance access making it an owner-operator friendly vessel. The cross plumbed twin sea chests provide all sea water to the engine room, a much-improved safety factor over most boats built with ubiquitous inlets wherever it suits the builder with little to no regard to functional serviceability. Two 17kW Onan generators in custom sound boxes and mounted aft port side in the engine room provide redundant electrical power at sea (each generator will independently carry the entire vessel's electrical load). The SK16 SeaKeeper (port aft) and the Naiad stabilizer hydraulic systems are also found here in the engine room. The fuel tanks are located at the vessel's center of gravity which translates into no requirement of fuel management for trim or ballast, allowing all supply and return valves to remain open unless equipment isolation is desired. Fuel levels can be checked via sight tubes mounted up against the fuel tank on the forward part of the engine room where it is easily accessed and viewed.

A separate pump room is located below the forward berthing compartment with access from the companionway. This space contains the fresh water and drinking water filters and pumps, redundant water pump and water distribution manifold.

- Twin Caterpillar 12.9L 1000 HP engines (440 hours)
- Twin 17kW Onan generators in custom sound shields (390 hours)
- Yacht Controller
- Outback inverter and charger

- 24V charger
- Bow Thruster (15HP)
- Stern Thruster (15HP)
- AGM no maintenance batteries
- Chilled water air conditioning (2x 3-ton Dometic Chillers)
- 550GPD Bluewater Desalinator
- SeaKeeper gyro stabilizer SK16
- Naiad fin stabilizers model 252
- Two (2) Stern 50 Amp Glendinning Cable masters
- Two (2) Bow 50 Amp Inlets
- Backlighted electrical Panels
- Carbon Monoxide detectors in all berthing spaces
- Soft Motor Mounts
- Two (2) Cross-Connected Sea Chest Sea Water Intakes with cleanouts
- FRP Fuel Tanks (1000 gallons total capacity) with sump and cleanout
- Fuel Manifold and proprietary Sight Gauge
- Dual Racor fuel filters with pressure gauges for each engine and generator
- Fire Suppressant System
- Engine Room Lead/Foam Sound and Heat Insulation System
- 4x 220V High Volume Engine Room Blowers
- Color coded Piping
- Gel coated bilges
- Oil change system
- LED Engine Room Lighting
- Common Drainage System from Bow to Stern collects deck drain, scupper and sump discharges
- Underwater Exhaust
- Underwater lights
- Glendinning Electronic controls
- Backup freshwater system

Disclaimer

The Company offers the details of this vessel in good faith but cannot guarantee or warrant the accuracy of this information nor warrant the condition of the vessel. A buyer should instruct his agents, or his surveyors, to investigate such details as the buyer desires validated. This vessel is offered subject to prior sale, price change, or withdrawal without notice.

Exclusions

Owner's personal belongings (including bedding, cushions) upper aft deck set of teak table and

chairs, art work, and salon coffee table.

Exclusions

Owner's personal belongings.

Disclaimer

The Company offers the details of this vessel or yacht in good faith but cannot guarantee or warrant the accuracy of this information nor warrant the condition of the vessel. A buyer should instruct his representatives, agents, or his surveyors, to investigate such details as the buyer desires validated. This vessel or yacht is offered subject to prior sale, price change, or withdrawal without notice.

PHOTOS

Salon Looking Forward



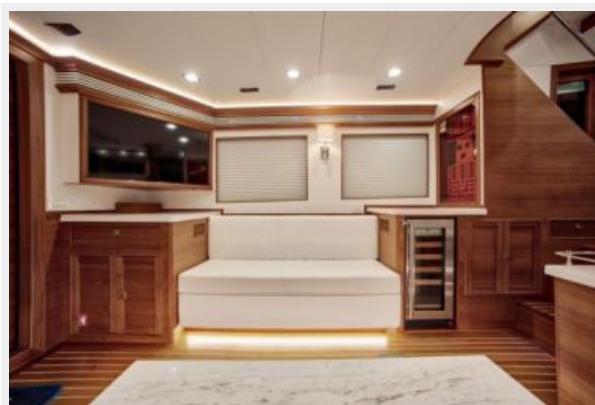
Salon



Salon Looking to Starboard



Salon Looking to Port



Salon Looking Aft



Salon (Starboard Aft)



Pilothouse



Galley



Galley



Galley Looking to Salon



Dining Area



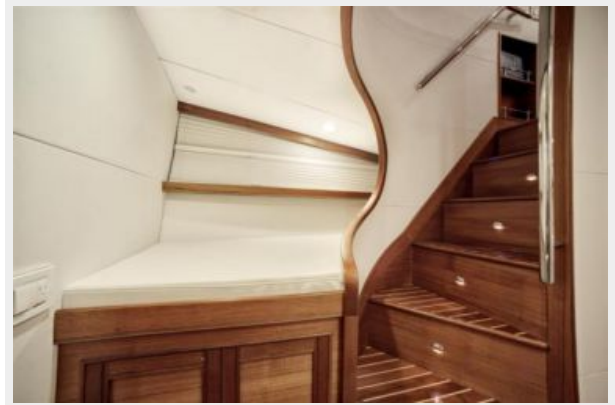
Pilothouse Looking Aft



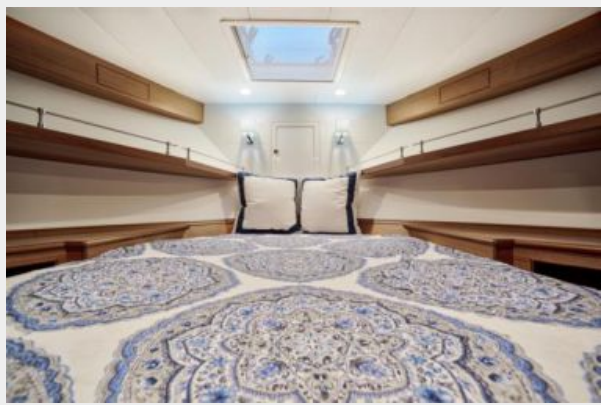
Companionway



Buddy Bunk



Vip



Vip Looking to Port



Guest Head



Guest Shower



Master Looking Forward



Master Looking Aft



Master Looking to Port



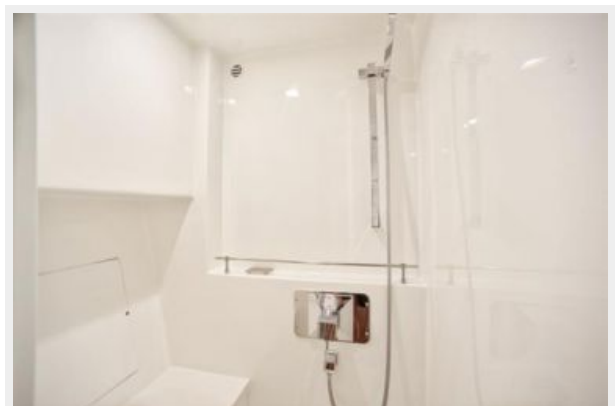
Master Head



Master Head



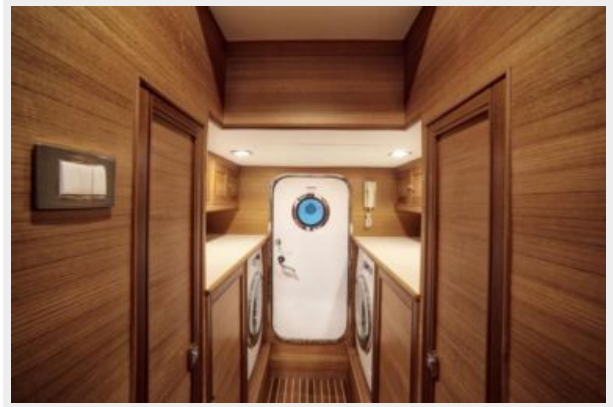
Master Shower



Master Rain Shower



Utility Room



Washer and Dryer



Command Bridge



Helm



Helm



Command Bridge Seating



Command Bridge Day Head



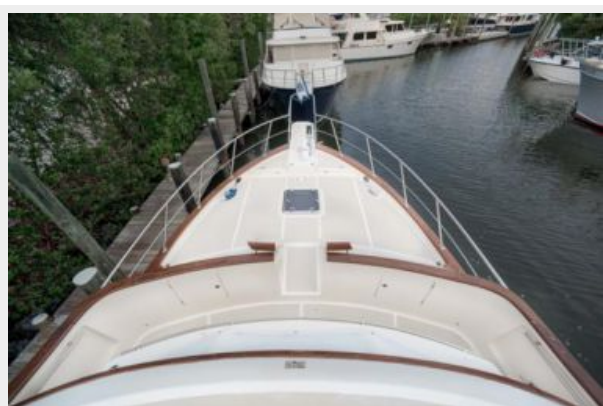
Upper Aft Deck



Command Bridge



Foredeck



Foredeck Looking Aft



Cockpit



Transome



Engine Room



Maritime at Night



Maritime in Key Largo



Maritime in the Bahamas



Maritime- Profile



Maritime Flip



CONTACTS

Andrey Shestakov, leading yacht broker of the sales department of Shestakov Yacht Sales Inc. Shestakov Yacht Sales Inc., the official representative of the Miami/Fort Lauderdale FL headquarters.

Contact details

Email: **andrey@shestakovyachtsales.com**

Web: shestakovyachtsales.com/en/

Telephones

USA: **+1(954)274-4435**

Office hours

Monday – Saturday: **9:00 - 21:00 EDT**

Sunday: **closed**

Address



Harbour Towne Marina, 850 NE 3rd St,
STE 213, Dania, FL 33004