

HOOK EM — HATTERAS



Builder: HATTERAS

Year Built: 2000

Model: Sport Fisherman

Price: PRICE ON APPLICATION

Location: United States

LOA: 70' 0" (21.34m)

Beam: 18' 0" (5.49m)

Min Draft: 7' 0" (2.13m)

Max Draft: 5' 10" (1.78m)

Cruise Speed: 26 Kts. (30 MPH)

Max Speed: 30 Kts. (35 MPH)

Our experienced yacht broker, Andrey Shestakov, will help you choose and buy a yacht that best suits your needs **HOOK EM — HATTERAS** from our catalogue. Presently, at Shestakov Yacht Sales Inc., we have a wide variety of yachts available on our sale's list. We also work in close contact with all the big yacht manufacturers from all over the world.

If you would like to buy a yacht **HOOK EM — HATTERAS** or would like help answering any questions concerning purchasing, selling or chartering a yacht, please call +1(954)274-4435

TABLE OF CONTENTS

TABLE OF CONTENTS	2
SPECIFICATIONS	5
Overview	5
Basic Information	5
Dimensions	5
Speed, Capacities and Weight	5
Accommodations	6
Hull and Deck Information	6
Engine Information	6
DETAILED INFORMATION	7
Description	7
2019/2020 upgrades	10
Exclusions	11
Disclaimer	11
PHOTOS	12
DSC07675	12
large_1789650-4	12
DSC07678	12
DSC07699	12
DSC07705	12
DSC07711	12
DSC07720	13
DSC07726	13
DSC07729	13
DSC07735	13
DSC07744	13
DSC07738	13
DSC07747	14

DSC07750	14
DSC07759	14
DSC07762	14
DSC07771	15
DSC07765	15
DSC07783	15
DSC07777	15
DSC07789	16
DSC07792	16
DSC07744	16
DSC07747	16
DSC07750	17
DSC07759	17
DSC07762	17
DSC07765	17
DSC07771	17
DSC07777	17
DSC07783	18
DSC07789	18
DSC07792	18
DSC07813	18
DSC07816	18
DSC07822	18
DSC07828	19
DSC07831	19
DSC07834	19
DSC07837	19
IMG_1021	19
IMG_1024	19

IMG_1028	20
IMG_1029	20
IMG_1031	20
IMG_1030	20
IMG_1032	21
IMG_1033	21
IMG_E0991	21
IMG_E0998	21
IMG_E1007	22
IMG_E1001	22
IMG_E1008	22
IMG_E1015	22
DSC07739-HDR	23
33164_hatteras001	23
hatteras-sole_retreat-full	23
CONTACTS	24
Contact details	24
Telephones	24
Office hours	24
Address	24

SPECIFICATIONS

Overview

Very well maintained Hatteras 70 enclosed bridge.

Numerous upgrades and improvements

Proven fish catcher.

Basic Information

Category: Sport Fisherman

Sub Category: Sport Fisherman

Model Year: 2000

Year Built: 2000

Country: United States

Vessel Top: Enclosed

Dimensions

LOA: 70' 0" (21.34m)

Beam: 18' 0" (5.49m)

Min Draft: 7' 0" (2.13m)

Max Draft: 5' 10" (1.78m)

Speed, Capacities and Weight

Cruise Speed: 26 Kts. (30 MPH)

Max Speed: 30 Kts. (35 MPH)

Water Capacity: 365 Gallons

Holding Tank: 60 Gallons

Fuel Capacity: 2000 Gallons

Accommodations

Total Cabins: 4

Hull and Deck Information

Hull Material: Fiberglass

Hull Color: White

Engine Information

Engines: 2

Manufacturer: MTU

Model: 16V2000

Engine Type: Inboard

Fuel Type: Diesel

DETAILED INFORMATION

Description

The 70 Hatteras Enclosed Bridge brings the best features of a quality motoryacht and a sportfish together to make an outstanding family cruiser and a tournament fishing machine.

Having been built in 2000 Hook Em is heavier than newer versions of this yacht. Along with the large stabilizers and trim tabs it keeps the yacht comfortable at anchor or in weather.

Hook Em has always been a proven fish catcher in the US, Bermuda and Bahamas.

The engines and machinery are maintained to the highest standards. The MTU services are current. The engine room is watched over by an experienced Captain who has a great deal of pride in his charge.

Cockpit

- Storage and tackle center
- Two large "drop-in" fish boxes
- Eskimo ice machine
- Outriggers
- Pedestal mounted teak table
- Large built-in fish box and full walk-through door
- Fresh water wash down

Salon

- Leather L-Shaped Sofa to port with built-in storage
- Matching leather chair to starboard
- Over sized ottoman, each with additional storage
- Wet bar with bottle storage below, also house receiver and amplifier
- New 65" smart TV in a new pop up TV cabinet

Galley and Dinette

- Oversized U-shaped dinette
- Two leather stools (stow below the dinette and allow dining for 8 to 10 guests)
- Two door Whirlpool refrigerator/freezer
- Under mounted stainless steel sinks
- Kitchen Aid trash compactor
- Whirlpool four-burner cooktop

- Sharp Microwave/Convection oven with fan & light above
- Cabinet & drawer space
- Teak & holly sole
- Granite countertops
- Walk-in warehouse with a SubZero freezer, electrical distribution panels, bin storage and tons of space

Master Stateroom

- Full beam Master Stateroom with Island king-size bed
- Matching night stands
- Panasonic Home Theater System
- New 42" smart TV
- Panasonic DVD player
- Large Cedar-Lined walk-in closet
- 14-Oversized drawers for storage
- Master head with full tub and shower

VIP Guest Stateroom

- Island queen berth, hinged and opens for storage • Large hanging locker
- Drawer storage
- New 32" smart TV
- Ensuite head with stall shower, Corian countertops and teak & holly sole

Guest Stateroom - Port

- Twin berths
- Large hanging locker
- Drawer storage
- New 32" smart tv
- Ensuite head with stall shower, Corian countertops and teak & holly sole

Guest Stateroom - Starboard

- Twin berths
- Drawer storage
- Full-size hanging locker
- New 28" smart TV

- Ensuite head includes a stall shower, Corian countertops and teak & holly sole

Companionway

- Whirlpool stacked washer & dryer

Engines, Mechanical, & Electrical

- Twin 16V2000 MTU @1800HP with approximately 3600 hours - M4 service completed
- ZF 4.133:1 Transmissions
- Duel Racor fuel filters
- Air Seps
- Oil change system
- Electronic engine controls-single lever
- Alge X system
- Kiddie Halon 1301 engine room fire system updated annually
- 2-220V shore receptacles & 2-cables with Glendenning cablemaster
- 2-21.5KW Onan generators
- 24V DC electrical system with 8-8D batteries
- 75AMP 24V Master Volt Charger rebuilt in 2020
- 10AMP 24V Guest Charger
- 40 Gallon hot water heater
- CruiseAir R/C AC throughout
- FCI Water maker – MI 2267

Enclosed Flybridge

- Simrad AP 20 Auto Pilot
- 6" Ritchie compass
- Furuno NavNet 72 mile radar
- 2 new Furuno touch screens with navigation, Radar, depth, speed, wind
- New Icom VHF
- Wet bar with granite countertops
- Sony TV
- New 32" smart TV with Direct TV receiver
- Twin helm chairs
- L-shaped settee

Deck & Accessories

- 15' Novurania with 60HP 4-Stroke Yamaha
- Nautical Structures hydraulic davit rebuilt in 2019
- Maxwell 3500 Windless
- FRP bow pulpit with roller
- Plow anchor with 250 ft. chain
- Deck wash downs
- Four underwater lights at transom
- Two spreader lights
- Trac stabilizers with 7.5 ft. fins
- BBQ Grill-Gaggenau 2-buner on Mezzanie Deck

2019/2020 upgrades

2019/2020 Upgrades

- New pop up TV cabinet in Salon with a 65" smart TV
- Samsung Sound bar
- New security camera system
- Steering Hyd lines replaced
- Fresh water pumps are new
- New radio, nav lights, USB charger, Life jackets, Paddles, Steering cable and control cables in Tender
- Chain locker upgraded
- Davit rebuilt, new kevlar line, new hydraulics, paint
- All exterior cushions replaced
- Fire system upgraded
- New fish box macerator
- Glendening system overhauled
- New wiring for electric reels
- Transom door rebuilt
- Cockpit rails and ladder powder coated
- New bait freezer compressor
- Icemaker rebuilt with new compressor and seals
- Fighting chair disassembled, re-chromed and overhauled
- New 9 person life raft
- New KVH 7 trac
- New KVH 1 booster
- New wiper motors
- All new safety gear
- Outriggers disassembled and upgraded with new wire and fittings as well as new collapsable arms
- New electronics
- New autopilot

- EB dash reconfigured and upholstered
- Mini fridge installed in EB
- All new smart TVs throughout

Exclusions

Owner's personal belongings.

Disclaimer

The Company offers the details of this vessel or yacht in good faith but cannot guarantee or warrant the accuracy of this information nor warrant the condition of the vessel. A buyer should instruct his representatives, agents, or his surveyors, to investigate such details as the buyer desires validated. This vessel or yacht is offered subject to prior sale, price change, or withdrawal without notice.

PHOTOS

large_1789650-4



DSC07675



DSC07678



DSC07699



DSC07705



DSC07711



DSC07720



DSC07726



DSC07729



DSC07735



DSC07738



DSC07744



DSC07747



DSC07750



DSC07759



DSC07762



DSC07765



DSC07771



DSC07777



DSC07783



DSC07789



DSC07792



DSC07744



DSC07747



DSC07750



DSC07759



DSC07762



DSC07765



DSC07771



DSC07777



DSC07783



DSC07789



DSC07792



DSC07813



DSC07816



DSC07822



DSC07828



DSC07831



DSC07834



DSC07837



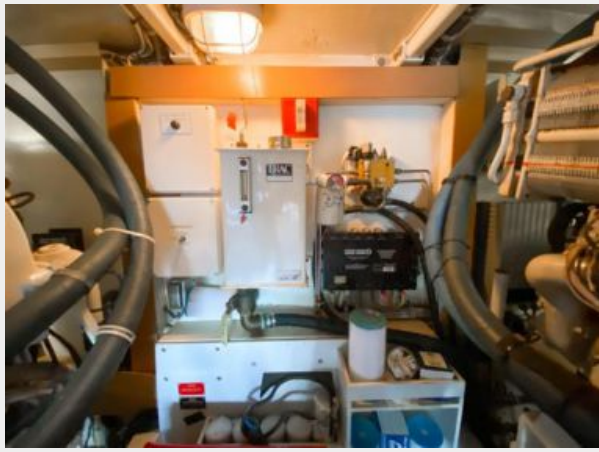
IMG_1021



IMG_1024



IMG_1028



IMG_1029



IMG_1031



IMG_1030



IMG_1032



IMG_1033



IMG_E0991



IMG_E0998



IMG_E1001



IMG_E1007



IMG_E1008



IMG_E1015



DSC07739-HDR



33164_hatteras001



hatteras-sole_retreat-full



CONTACTS

Andrey Shestakov, leading yacht broker of the sales department of Shestakov Yacht Sales Inc. Shestakov Yacht Sales Inc., the official representative of the Miami/Fort Lauderdale FL headquarters.

Contact details

Email: andrey@shestakovyachtsales.com

Web: shestakovyachtsales.com/en/

Telephones

USA: +1(954)274-4435

Office hours

Monday – Saturday: **9:00 - 21:00** EDT

Sunday: **closed**

Address



Harbour Towne Marina, 850 NE 3rd St,
STE 213, Dania, FL 33004