

DANCIN — MAINSHIP



Builder: MAINSHIP

Year Built: 2008

Model: Motor Yacht

Price: PRICE ON APPLICATION

Location: United States

LOA: 35' 0" (10.67m)

Beam: 10' 2" (3.10m)

Max Draft: 2' 6" (0.76m)

Cruise Speed: 12 Kts. (14 MPH)

Our experienced yacht broker, Andrey Shestakov, will help you choose and buy a yacht that best suits your needs **Dancin — MAINSHIP** from our catalogue. Presently, at Shestakov Yacht Sales Inc., we have a wide variety of yachts available on our sale's list. We also work in close contact with all the big yacht manufacturers from all over the world.

If you would like to buy a yacht **Dancin — MAINSHIP** or would like help answering any questions concerning purchasing, selling or chartering a yacht, please call **+1(954)274-4435**

TABLE OF CONTENTS

TABLE OF CONTENTS	2
SPECIFICATIONS	6
Overview	6
Basic Information	6
Dimensions	6
Speed, Capacities and Weight	6
Accommodations	7
Hull and Deck Information	7
Engine Information	7
DETAILED INFORMATION	8
Main Description	8
Mainship Pilot Deck and Hull	8
Mainship Pilot Engine Compartment	8
Mainship Pilot galley and accommodations	9
Mainship Pilot Electronics and navigation	9
DISCLAIMER	10
Exclusions	10
Disclaimer	10
PHOTOS	11
02	11
01	11
03	11
04	11
06	12
05	12
07	12
08	12
11	13

09	13
12	13
13	13
14	13
15	13
16	14
17	14
19	14
18	14
20	14
21	14
22	15
23	15
24	15
25	15
26	15
27	15
29	16
28	16
30	16
31	16
32	17
33	17
34	17
35	17
36	18
37	18
39	18
38	18

40	19
41	19
42	19
43	19
44	19
45	19
46	20
47	20
48	20
49	20
50	20
51	20
52	21
53	21
55	21
54	21
56	21
57	21
58	22
59	22
60	22
61	22
63	23
62	23
64	23
65	23
66	24
67	24
68	24

69	24
70	24
71	24
72	25
73	25
74	25
75	25
CONTACTS	26
Contact details	26
Telephones	26
Office hours	26
Address	26

SPECIFICATIONS

Overview

A truly exceptional, one-owner boat, it's hard to believe that Dancin' isn't brand new! With her all-weather heated and cooled cockpit deck for social activities, she features a fully equipped galley with al fresco electric grill and generous dining table/lounge seating for up to six. The relaxing heated and cooled area below features a centerline queen bed, settees, TV, and full head, plus lots of storage. Her gleaming engine compartment is spacious and easily accessible, with all the equipment you hope to find in much larger boats and amazingly quiet insulation. Dancin' would be a fun, maneuverable boat for friends to have a weekend getaway, a couple to do The Great Loop, or someone who is off for a solo adventure.

Basic Information

Category: Motor Yacht

Model Year: 2008

Year Built: 2008

Country: United States

Dimensions

LOA: 35' 0" (10.67m)

Beam: 10' 2" (3.10m)

Max Draft: 2' 6" (0.76m)

Speed, Capacities and Weight

Cruise Speed: 12 Kts. (14 MPH)

Displacement: 11750 Pounds

Water Capacity: 40 Gallons

Holding Tank: 30 Gallons

Fuel Capacity: 180 Gallons

Accommodations

Total Cabins: 1

Total Berths: 2

Total Heads: 1

Hull and Deck Information

Hull Material: Fiberglass

Engine Information

Engines: 1

Manufacturer: Yanmar

Model: 6LPA-STP2

Engine Type: Inboard

Fuel Type: Diesel

DETAILED INFORMATION

Main Description

A truly exceptional, one-owner boat, it's hard to believe that Dancin' isn't brand new! With her all-weather heated and cooled cockpit deck for social activities, she features a fully equipped galley with al fresco electric grill and generous dining table/lounge seating for up to six. The relaxing heated and cooled area below features a centerline queen bed, settees, TV, and full head, plus lots of storage. Her gleaming engine compartment is spacious and easily accessible, with all the equipment you hope to find in much larger boats and amazingly quiet insulation. Dancin' would be a fun, maneuverable boat for friends to have a weekend getaway, a couple to do The Great Loop, or someone who is off for a solo adventure.

Mainship Pilot Deck and Hull

Flag blue gelcoat

Side power bow thruster

Electric windlass

22# Danforth anchor

Bronze strut with prop protection

Raw water washdown

Mainship Pilot Engine Compartment

315 hp Yanmar with only 771 hours

Economical fuel consumption of approx 3 mpg @ 2700 rpm

NxtGen 5 kw generator with sound shield (new 8/19)

ProNautic 12-20P 20 amp 3 bank 12 v charger

Sound noise barrier

Racor fuel filter

Dripless shaft log

Fire suppression system

Engine alarm system

Mainship Pilot galley and accommodations

Hot/cold pressurized water

Electric grill

Stainless sink w/designer faucet

Ice maker

AC/DC Refrigerator/freezer with pull out drawers

Microwave

Corian countertop

Under cabinet storage

Dinette with adjustable size table

Reverse cycle air conditioning/heat

Centerline queen with under-bed storage

Convertible sofa becomes upper/lower bunks

20" Flatscreen TV w/DVD player

Cedar lined hanging locker

Electric head with shower

Cherry plank flooring

Custom removable stair inserts for easy maneuverability

Window shades, sun shade for deck, outside covers

Mainship Pilot Electronics and navigation

Hydraulic steering

Raymarine E80 chartplotter, autopilot, depth gage, VHF radio

Stereo system w/CD player

Windshield wipers

Trim tabs

Fuel, oil, battery, and temp monitor

DISCLAIMER

The Company offers the details of this vessel in good faith but cannot guarantee or warrant the accuracy of this information nor warrant the condition of the vessel. A buyer should instruct his agents, or his surveyors, to investigate such details as the buyer desires validated. This vessel is offered subject to prior sale, price change, or withdrawal without notice.

Exclusions

Owner's personal belongings.

Disclaimer

The Company offers the details of this vessel or yacht in good faith but cannot guarantee or warrant the accuracy of this information nor warrant the condition of the vessel. A buyer should instruct his representatives, agents, or his surveyors, to investigate such details as the buyer desires validated. This vessel or yacht is offered subject to prior sale, price change, or withdrawal without notice.

PHOTOS

01



02



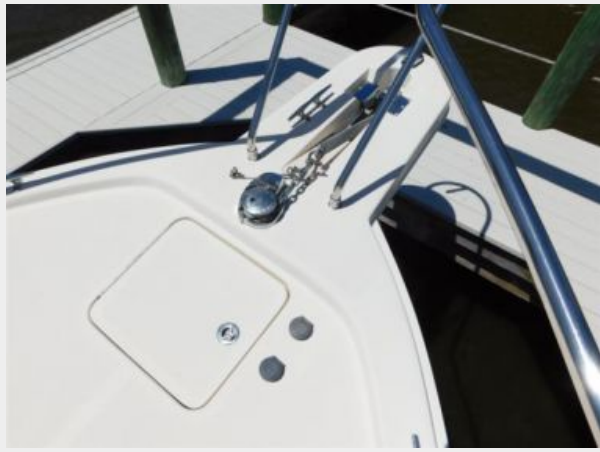
03



04



05



06



07



08



09



11



12



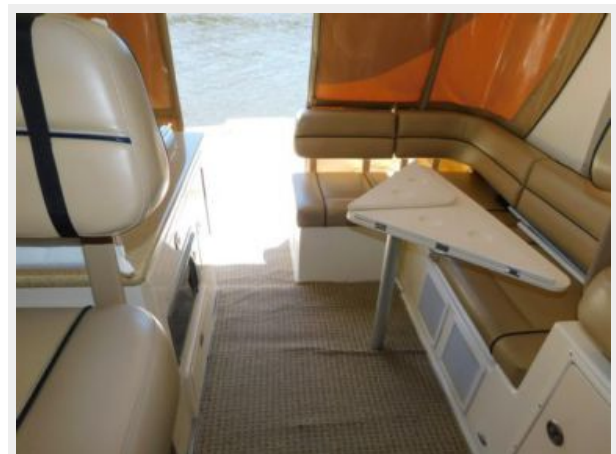
13



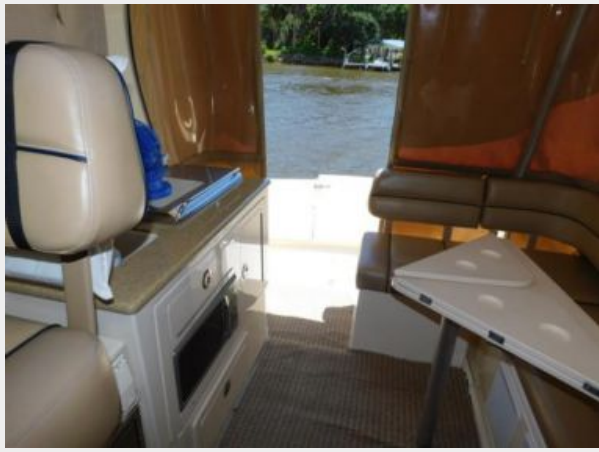
14



15



16



17



18



19



20



21



22



23



24



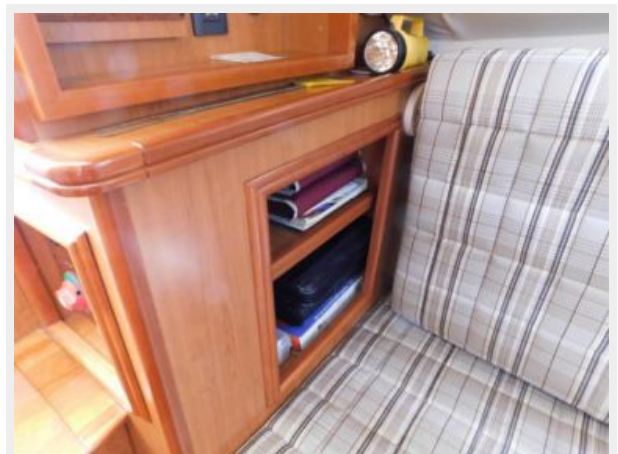
25



26



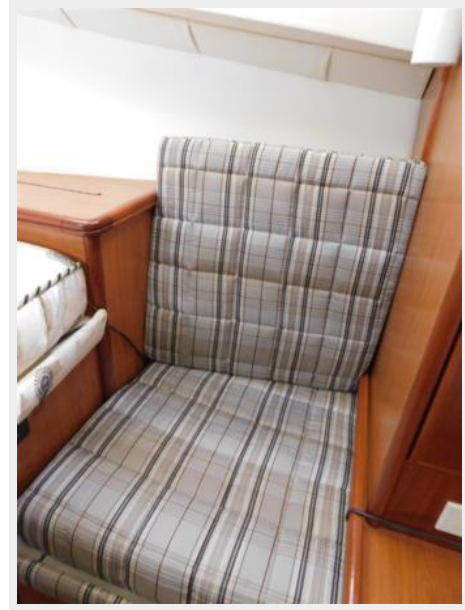
27



28



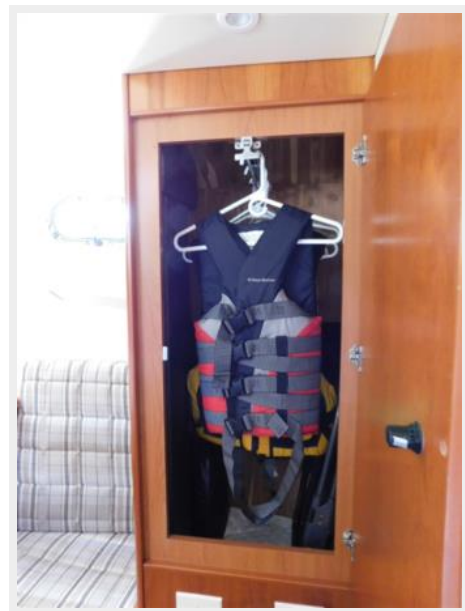
29



30



31



32



33



34



35



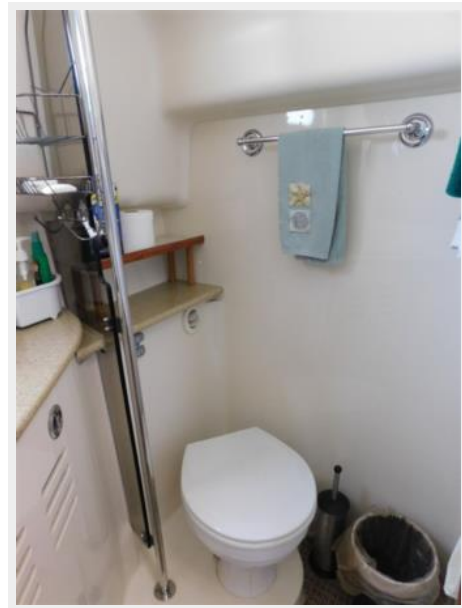
36



37



39



38



40



41



42



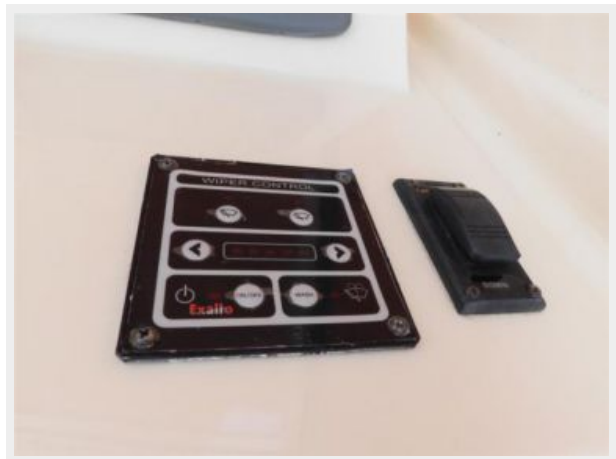
43



44



45



46



47



48



49



50



51



52



53



54



55



56



57



58



59



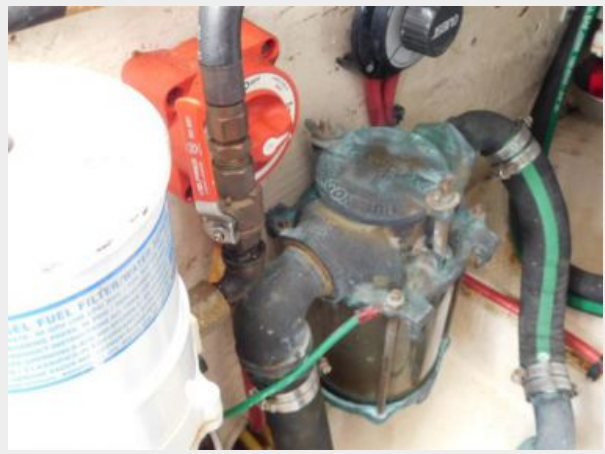
60



61



62



63



64



65



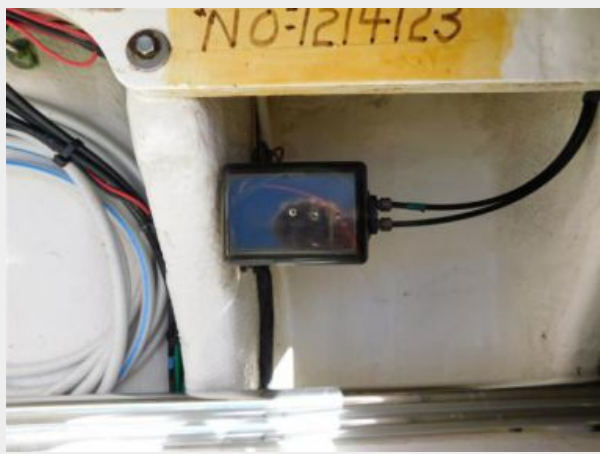
66



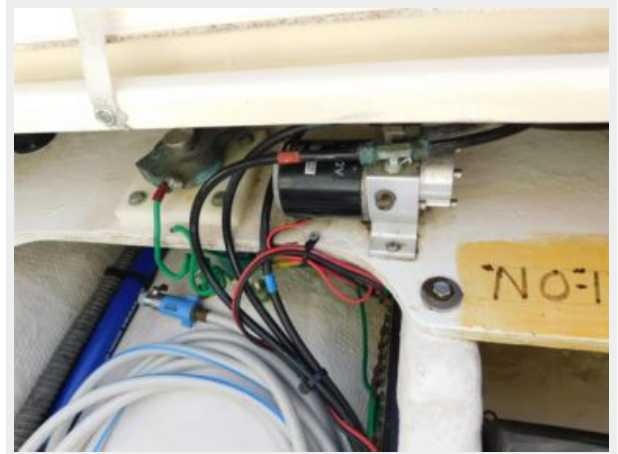
67



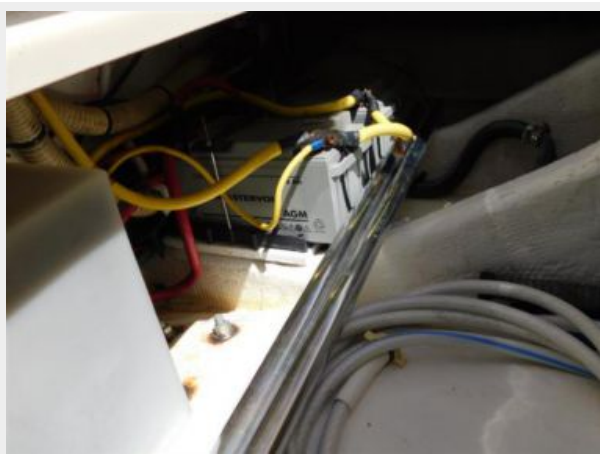
68



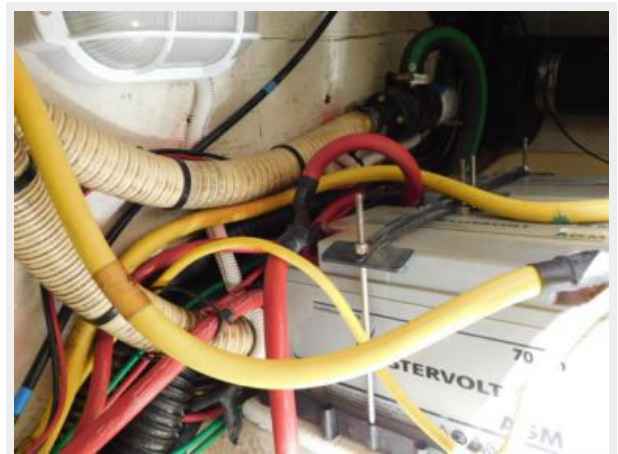
69



70



71



72



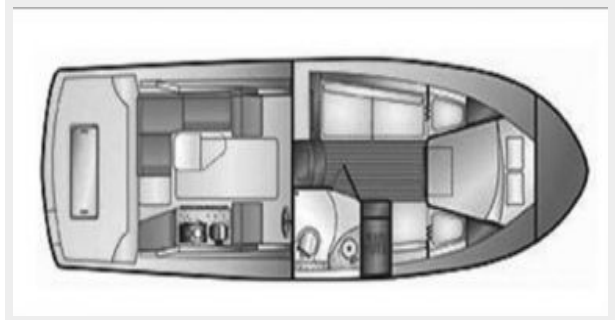
73



74



75



CONTACTS

Andrey Shestakov, leading yacht broker of the sales department of Shestakov Yacht Sales Inc. Shestakov Yacht Sales Inc., the official representative of the Miami/Fort Lauderdale FL headquarters.

Contact details

Email: andrey@shestakovyachtsales.com

Web: shestakovyachtsales.com/en/

Telephones

USA: +1(954)274-4435

Office hours

Monday – Saturday: **9:00 - 21:00** EDT

Sunday: **closed**

Address



Harbour Towne Marina, 850 NE 3rd St,
STE 213, Dania, FL 33004