

MUZO'S 20 — TANSU YACHTS



Builder: [Tansu Yachts](#)

Year Built: 2020

Model: Motor Yacht

Price: PRICE ON APPLICATION

Location: Turkey

LOA: 65' 8" (20.00m)

Beam: 18' 9" (5.70m)

Min Draft: 4' 6" (1.37m)

Cruise Speed: 11 Kts. (13 MPH)

Max Speed: 13 Kts. (15 MPH)

Our experienced yacht broker, Andrey Shestakov, will help you choose and buy a yacht that best suits your needs **MUZO'S 20 — Tansu Yachts** from our catalogue. Presently, at Shestakov Yacht Sales Inc., we have a wide variety of yachts available on our sale's list. We also work in close contact with all the big yacht manufacturers from all over the world.

If you would like to buy a yacht **MUZO'S 20 — Tansu Yachts** or would like help answering any questions concerning purchasing, selling or chartering a yacht, please call **+1(954)274-4435**

TABLE OF CONTENTS

TABLE OF CONTENTS	2
SPECIFICATIONS	5
Overview	5
Basic Information	5
Dimensions	5
Speed, Capacities and Weight	6
Accommodations	6
Hull and Deck Information	6
Engine Information	6
PHOTOS	7
PR0272	7
PR0275	7
PR0276	7
PR0277	7
PR0265	8
PR0268	8
PR0273	8
MUZO'S 20	8
DSC00112	9
DSC00224 (1)	9
PR0223	9
DSC00220	9
PR0224	9
PR0230	9
PR0238	10
DSC00147 (1)	10
PR0236	10
DSC00131	10

PR0244	10
DSC00124 (1)	10
DSC00204	11
PR0191	11
PR0190	11
DSC00199	11
PR0186	11
PR0170	11
PR0171	12
DSC00120 (1)	12
PR0220	12
PR0174	12
PR0176	12
PR0177	12
PR0214	13
PR0215	13
PR0218	13
PR0199	13
PR0206	14
PR0202	14
PR0211	14
PR0205	14
PR0195	15
DSC00076	15
PR0257	15
DSC00214	15
DSC00178	15
DSC00208	15
CONTACTS	16

Contact details	16
Telephones	16
Office hours	16
Address	16

SPECIFICATIONS

Overview

PRICED TO SELL!

Recently launched in 2020, M/Y MUZO'S 20 has a distinguished exterior style that can be recognized as Tansu Yacht Design thanks to her sharp angular lines and military appearance. In contrast, the interior styling provides a light atmosphere and contemporary styling. MUZO'S 20 can accommodate six guests in three staterooms, all with en-suite facilities. The master stateroom is situated up forward on the lower deck and full-beam with a well-appointed en-suite. The VIP double and twin cabins are both also on the lower deck. The saloon is situated on the main deck, a great area to relax with a couple of comfortable facing sofa's, a flat-screen TV and plenty of storage space. There is direct access to the aft of the yacht from the saloon, where there is a teak table with raised seating perfect for al fresco dining. Forward of the main saloon to the port side, there is a well-equipped galley and further, forward the wheelhouse station with a staircase leading down to the lower deck. The upper deck has an abundance of space, creating a great entertaining area or a space for toy storage in a total of 40 Sqm. Towards the aft, there is a davit with a capacity of 350 kg and an area for tender storage, which currently houses a 330 Brig Falcon. There is a helm station up forward, sun loungers and an L-Shaped seating area with another teak table. All of which is half covered by a structured hardtop. There is a large aft transom which provides an excellent platform for ease of access to and from the water. Constructed in wood with a cold moulded fibre epoxy coating, MUZO'S 20 is both comfortable at sea and strong, powered by 2 Cummins QSB 6.7 425 hp engines with a cruising speed of 11 knots and a max speed of 13.2 knots, MUZO'S 20 has a range of up to 1000 nm at 8 knots.

Basic Information

Category: Motor Yacht

Model Year: 2020

Year Built: 2020

Country: Turkey

Vessel Top: Enclosed P.H. W/Sundeck

Fly Bridge: Yes

Dimensions

LOA: 65' 8" (20.00m)

LWL: 64' 0" (19.50m)

Beam: 18' 9" (5.70m)

Min Draft: 4' 6" (1.37m)

Speed, Capacities and Weight

Cruise Speed: 11 Kts. (13 MPH)

Max Speed: 13 Kts. (15 MPH)

Gross Tonnage: 77 Pounds

Water Capacity: 1250 Gallons

Fuel Capacity: 2840 Gallons

Accommodations

Total Cabins: 3

Sleeps: 6

Crew Berths: 4

Hull and Deck Information

Deck Material: Teak

Hull Configuration: Full Displacement

Exterior Designer: Tansu Yachts

Interior Designer: Tansu Yachts

Engine Information

Engines: 2

Manufacturer: Cummins

Model: QSB 6.7

PHOTOS

PR0272



PR0275



PR0276



PR0277



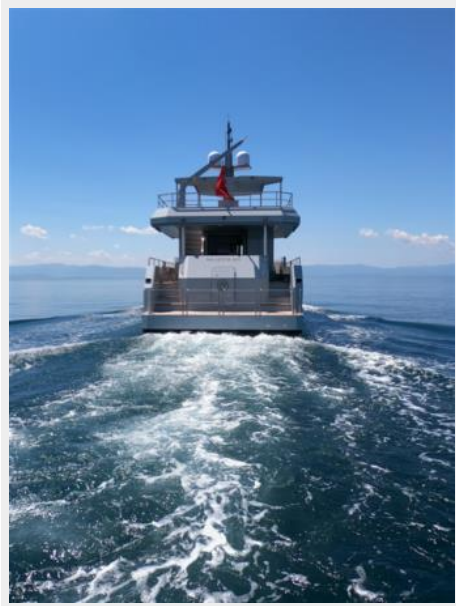
PR0268



PR0265



PR0273



MUZO'S 20



DSC00112



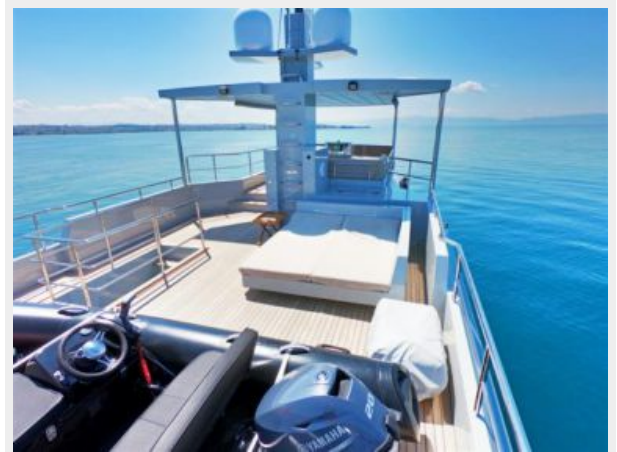
DSC00224 (1)



DSC00220



PR0223



PR0224



PR0230



PR0238



DSC00147 (1)



DSC00131



PR0236



DSC00124 (1)



PR0244



DSC00204



PR0191



PR0190



DSC00199



PR0186



PR0170



PR0171



DSC00120 (1)



PR0220



PR0174



PR0176



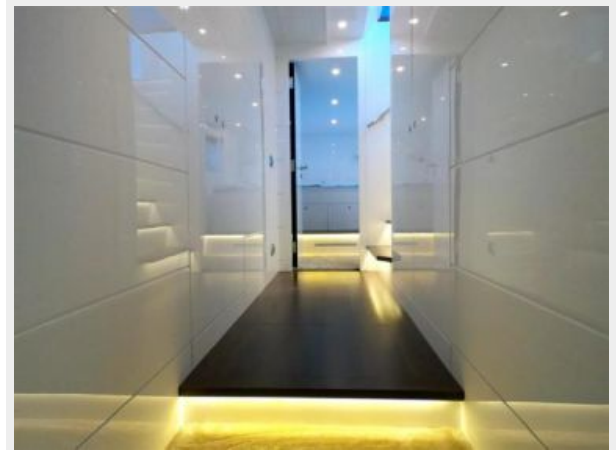
PR0177



PR0214



PR0215



PR0218



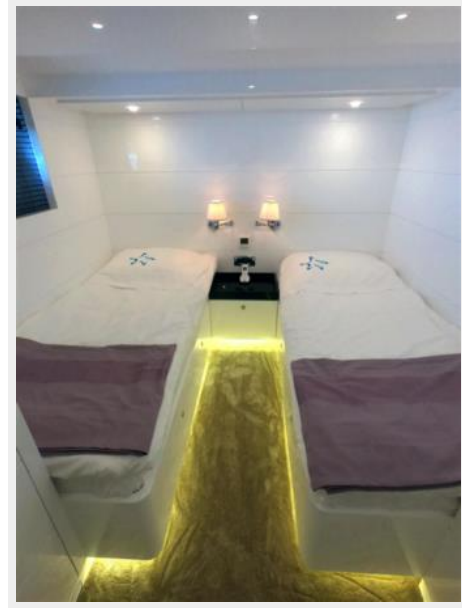
PR0199



PR0202



PR0206



PR0205



PR0211



PR0195



DSC00076



DSC00214



PR0257



DSC00178



DSC00208



CONTACTS

Andrey Shestakov, leading yacht broker of the sales department of Shestakov Yacht Sales Inc. Shestakov Yacht Sales Inc., the official representative of the Miami/Fort Lauderdale FL headquarters.

Contact details

Email: andrey@shestakovyachtsales.com

Web: shestakovyachtsales.com/en/

Telephones

USA: +1(954)274-4435

Office hours

Monday – Saturday: **9:00 - 21:00** EDT

Sunday: **closed**

Address



Harbour Towne Marina, 850 NE 3rd St,
STE 213, Dania, FL 33004