

LA LINDA VIDA — MCKINNA



Builder: MCKINNA

Year Built: 2003

Model: Motor Yacht

Price: PRICE ON APPLICATION

Location: United States

LOA: 58' 0" (17.68m)

Beam: 17' 3" (5.26m)

Max Draft: 3' 10" (1.17m)

Cruise Speed: 17.37952484 Kts. (20 MPH)

Max Speed: 19.986453566 Kts. (23 MPH)

Our experienced yacht broker, Andrey Shestakov, will help you choose and buy a yacht that best suits your needs **La Linda Vida — MCKINNA** from our catalogue. Presently, at Shestakov Yacht Sales Inc., we have a wide variety of yachts available on our sale's list. We also work in close contact with all the big yacht manufacturers from all over the world.

If you would like to buy a yacht **La Linda Vida — MCKINNA** or would like help answering any questions concerning purchasing, selling or chartering a yacht, please call **+1(954)274-4435**

TABLE OF CONTENTS

TABLE OF CONTENTS	2
SPECIFICATIONS	4
Overview	4
Basic Information	4
Dimensions	4
Speed, Capacities and Weight	4
Accommodations	5
Hull and Deck Information	5
Engine Information	5
DETAILED INFORMATION	6
Bridge Deck and Other Features	6
Interior	6
Accommodations	7
Galley	7
Electronics and Navigation Equipment	7
AV Electronics	8
Electrical System	8
Recent Upgrades and Service	8
Disclaimer	9
Exclusions	9
Disclaimer	9
PHOTOS	10
2_DSC_0037	10
3_DSC_0035	10
4_58 mckinna dockside	10
5_DSC_0034	10
6_DSC_0014	10
7_DSC_0013	10

8_DSC_0015	11
9_DSC_0016	11
10_DSC_0032	11
11_DSC_0033	11
12_DSC_0017	11
13_DSC_0018	11
14_DSC_0031	12
15_DSC_0023	12
16_DSC_0024	12
17_DSC_0027	12
18_DSC_0030	12
19_DSC_0026	12
20_DSC_0025	13
21_DSC_0028	13
22_DSC_0019	13
23_DSC_0020	13
24_DSC_0029	13
25_DSC_0022	13
26_DSC_0021	14
CONTACTS	15
Contact details	15
Telephones	15
Office hours	15
Address	15

SPECIFICATIONS

Overview

The McKinna 58 is a handsome pilothouse yacht whose graceful lines stood in contrast to the aggressive styling of many European luxury yachts of her era. Heavily built on a modified-V hull with prop pockets and a relatively wide beam, the high-gloss interior of the McKinna 58 is an impressive display of grain-matched woodwork and luxurious furnishings. Included in the three-stateroom layout is an amidships master suite with a diagonally positioned berth. The galley and dinette are on the pilothouse level, a few steps up from the spacious salon with its facing settees and built-in smart TV. The flybridge, which can be reached from the interior or exterior, seats eight and extends aft. Adding to the sense of luxury are the faux teak decks and flybridge sole. Note the engine room, accessed from the aft deck, is a little tight. Additional features include a hydraulic bow thruster and windlass, foredeck sun lounge, extended swim platform, laundry center, and lower helm deck door. Optional 800hp Caterpillar diesels cruise the McKinna 58 at 20 knots (mid 20s top). La Linda Vida is a 2003 model with the 800 hp Caterpillar engines. She is also equipped with a water maker and hydraulic windlass and bow thruster. The radar was recently replaced. La Linda Vida is in above average condition for a vessel her age. Interior is immaculate! Turn Key and ready to go! Owner open to all offers!

Basic Information

Category: Motor Yacht	Model Year: 2003
Year Built: 2003	Country: United States

Dimensions

LOA: 58' 0" (17.68m)	Beam: 17' 3" (5.26m)
Max Draft: 3' 10" (1.17m)	

Speed, Capacities and Weight

Cruise Speed: 17.37952484 Kts. (20 MPH)	Max Speed: 19.986453566 Kts. (23 MPH)
Water Capacity: 270 Gallons	Fuel Capacity: 1000 Gallons

Accommodations

Total Cabins: 3

Total Heads: 2

Hull and Deck Information

Hull Material: Fiberglass

Engine Information

Engines: 2

Manufacturer: Caterpillar

Model: 3406 6CYL

Engine Type: Inboard

Fuel Type: Diesel

DETAILED INFORMATION

Bridge Deck and Other Features

- Fly bridge with a full helm, crew seating and molded FRP aft deck overhang
- One (1) helm chair with ultra leather type seat cushions, built in bench seating with fabric over foam seat cushions
- Tinted acrylic spray shield with stainless steel supports
- Fixed glass wind shields with two (2) wipers and washers
- Stainless steel safety rail system
- Additional Equipment:
- Nova Kool 12/24 volt / 100/240 volt refrigerator.
- Stainless steel sink and faucet on aft deck and fly bridge
- Storage lockers and cabinets
- Engine throttle and gear controls plus bow thruster control on the aft deck
- (2) multiple LED underwater lights on the transom
- (2) inflated fenders with lines attached
- Various docking/mooring lines
- Search light: Jabsco 24 volt with controls at each helm station
- Stainless Steel propeller shafts
- Stabilizers
- Modified V Hull
- Main deck helm station and flybridge station
- Hydraulic Steering system
- Two (2) level main deck with the aft side, aft deck and swim platform - recessed
- Stainless steel stanchions and rail system run perimeter of deck from amidships around the forward perimeter
- Two (2) built in bosons lockers on the fore deck to port and starboard
- Stainless steel anchor roller chute with bow roller
- Stainless steel fittings and hardware
- White Bimini top with stainless steel support piping
- (1) 50 Kg Bruce galvanized steel anchor (main), (1) galvanized steel Danforth type anchor as spare with galvanized steel chain and (3) strand nylon rode
- Windlass: Maxwell 3500 hydraulic with chain sprocket and gypsy
- Small inflatable included
- Lift for the tender

Interior

- Gloss finished cabinets and trim
- Carpets on the main deck and guest staterooms and lower companionway, wood laminate type flooring in the galley

IN SUPERB CONDITION!

Accommodations

(3) Staterooms:

- Master stateroom aft with queen size bed and ensuite head
- Forward stateroom VIP with queen island berth and ensuite head, this head has an entry in the companionway as well
- Port stateroom with single berth

(2) Heads:

- w/ stall type shower in the forward head
- tub/shower in the master head

Sofas to port and starboard with light colored fabric over foam seat cushions in Salon

Galley

Forward up to starboard

- SINKS: Porcelain in the galley with Corian type in the heads
- REFRIGERATION: Sub Zero 700 TC refrigerator with Sub Zero freezer drawers
- STOVE/OVEN: (2) burner KitchenAid with ceramic glass cook top
- MICROWAVE: General Electric Profile convection / microwave
- ACCESSORIES: Fisher & Paykel dishwasher drawer, General Electric clothes washer and dryer

Electronics and Navigation Equipment

- Garmin VHF 110 and Raymarine Ray 218
- NEW Radar
- MULTI-NAVIGATION DISPLAY: Garmin GPSmap 8212 with touch screen and GPS/chart plotter/radar/depth/speed/fish finder functions
- MULTI-DISPLAY: Garmin with depth/speed/trip log/GPS position/digital compass functions
- SPEED LOG: Integrated into the multi navigation display and multi display
- DEPTH SOUNDER: Integrated into the multi navigation display and multi display
- FISH FINDER: Integrated into the multi-navigation displays
- COMPASSES: Ritchie compass

AV Electronics

- **TELEVISIONS:** Samsung smart televisions in the salon and forward staterooms, LG in the master stateroom
- **STEREO:** Bose system with zones throughout and flush mounted speakers
- **DVD:** BluRay DVD players in the salon and staterooms

Electrical System

Voltage: 12/24 volt Batteries:

- (2) 12 volt 8D lead acid batteries forward to port in the generator space
- (2) 12 volt 8D lead acid batteries mid to port in the generator space
- (2) 12 volt 8D lead acid batteries aft to port in the generator space
- (1) 12 volt 8D lead acid battery below the generator
- (2) 12 volt 8D lead acid batteries forward to starboard in the generator space

Shore Power Inlet

Generator: Onan, model: MDKAF-5551002

- 2,836.8 hours
- **FUEL TYPE:** Diesel
- **KILOWATT RATING:** 27.5 Kw
- **VOLTAGE RATING:** 120/240 volts AC @ 60Hz

AIR CONDITIONING UNITS: Split gas system with air handlers and digital thermostat controls throughout

Recent Upgrades and Service

- Hydraulic Bow thruster, windlass and stabilizers all driven off cross connected pumps on each engine.
- 120 VAC clothes dryer replaced with a 240 VAC dryer
- Garmin Radar scanner and pedestal 48 mile range replaced.
- Flybridge autopilot serviced
- Port engine transmission cooler repositioned to allow out board engine access.
- Two new circuit boards and rewire on A/C system to fix incorrect wiring for pump trigger also incorrect temperature sensor replaced in master stateroom so temperature now properly modulated. Four of the five A/C compressor units have been replaced in the last 3 years.
- Subzero refrigerator serviced
- Steering linkage serviced

- Float switches and pump out system serviced

Disclaimer

The company offers the details of this vessel in good faith but cannot guarantee or warrant the accuracy of this information nor warrant the condition of the vessel. A buyer should instruct his agents, or his surveyors, to investigate such details as the buyer desires validated. This vessel is offered subject to prior sale, price change or withdrawal without notice.

Exclusions

Owner's personal belongings.

Disclaimer

The Company offers the details of this vessel or yacht in good faith but cannot guarantee or warrant the accuracy of this information nor warrant the condition of the vessel. A buyer should instruct his representatives, agents, or his surveyors, to investigate such details as the buyer desires validated. This vessel or yacht is offered subject to prior sale, price change, or withdrawal without notice.

PHOTOS

2_DSC_0037



3_DSC_0035



4_58 mckinna dockside



5_DSC_0034



6_DSC_0014



7_DSC_0013



8_DSC_0015



9_DSC_0016



10_DSC_0032



11_DSC_0033



12_DSC_0017



13_DSC_0018



14_DSC_0031



15_DSC_0023



16_DSC_0024



17_DSC_0027



18_DSC_0030



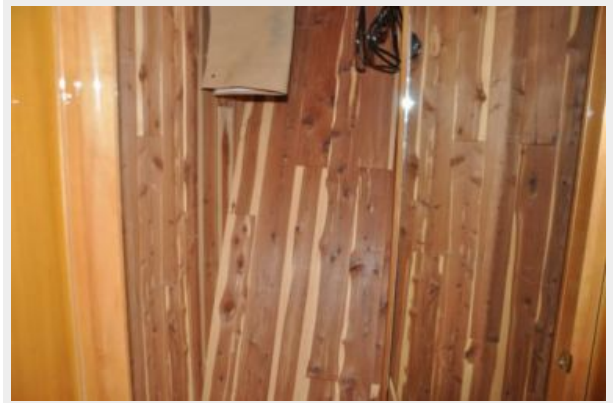
19_DSC_0026



20_DSC_0025



21_DSC_0028



22_DSC_0019



23_DSC_0020



24_DSC_0029



25_DSC_0022



26_DSC_0021



CONTACTS

Andrey Shestakov, leading yacht broker of the sales department of Shestakov Yacht Sales Inc. Shestakov Yacht Sales Inc., the official representative of the Miami/Fort Lauderdale FL headquarters.

Contact details

Email: **andrey@shestakovyachtsales.com**

Web: shestakovyachtsales.com/en/

Telephones

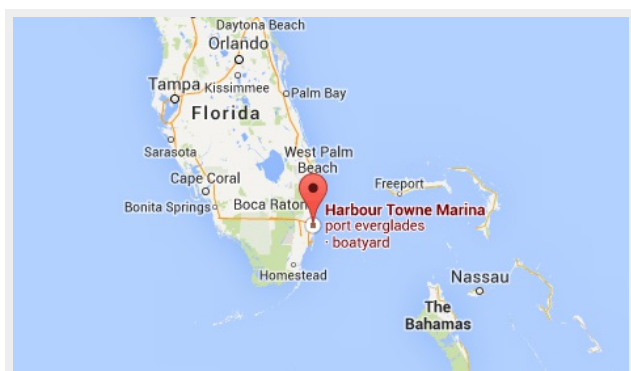
USA: **+1(954)274-4435**

Office hours

Monday – Saturday: **9:00 - 21:00 EDT**

Sunday: **closed**

Address



Harbour Towne Marina, 850 NE 3rd St,
STE 213, Dania, FL 33004