

34' LEGACY — LEGACY



Builder: LEGACY

Year Built: 2001

Model: Cruiser

Price: PRICE ON APPLICATION

Location: United States

LOA: 34' 0" (10.36m)

Beam: 12' 5" (3.78m)

Max Draft: 3' 6" (1.07m)

Cruise Speed: 13 Kts. (15 MPH)

Max Speed: 22 Kts. (25 MPH)

Our experienced yacht broker, Andrey Shestakov, will help you choose and buy a yacht that best suits your needs **34' Legacy — LEGACY** from our catalogue. Presently, at Shestakov Yacht Sales Inc., we have a wide variety of yachts available on our sale's list. We also work in close contact with all the big yacht manufacturers from all over the world.

If you would like to buy a yacht **34' Legacy — LEGACY** or would like help answering any questions concerning purchasing, selling or chartering a yacht, please call **+1(954)274-4435**

TABLE OF CONTENTS

TABLE OF CONTENTS	2
SPECIFICATIONS	4
Overview	4
Basic Information	4
Dimensions	4
Speed, Capacities and Weight	4
Accommodations	5
Hull and Deck Information	5
Engine Information	5
DETAILED INFORMATION	6
Description	6
Exclusions	8
Disclaimer	8
PHOTOS	9
DJI_0043	9
DJI_0044	9
DJI_0045	9
DJI_0047	9
DJI_0048	9
DJI_0049	9
7168809_20190802161612700_1_XLARGE	10
7168809_20191101135156693_1_XLARGE	10
7168809_20190802161632158_1_XLARGE	10
7168809_20190802161648630_1_XLARGE	10
7168809_20190802161811459_1_XLARGE	10
7168809_20191101135101780_1_XLARGE	10
7168809_20190802162900985_1_XLARGE	11
7168809_20191112160647956_1_XLARGE	11

7168809_20190802163019763_1_XLARGE	11
7168809_20190802163101381_1_XLARGE	11
7168809_20190802163549164_1_XLARGE	11
7168809_20190802163147445_1_XLARGE	11
7168809_20190802163701924_1_XLARGE	12
7168809_20190802163828232_1_XLARGE	12
CONTACTS	13
Contact details	13
Telephones	13
Office hours	13
Address	13

SPECIFICATIONS

Overview

A scaled down version of the Legacy 40, the Legacy 34 is a high-quality cruiser built by Freedom Yachts. Originally designed by Mark Ellis, who has designed many many Downeast style vessels which share that New England look. The 34 is built with a sharp entry, a deep skeg for directional stability, and prop and rudder protection.

The interior of the Legacy 34 will easily suit the needs of a cruising lifestyle, and the level of fit and finish is superb. The extra large windows provide all-around visibility, and the varnished mahogany woodwork and teak-and-holly sole add much to the traditional feel of the vessel.

Notable features include a deck door at the helm, wide sidedecks, and a separate stall shower in the head.

This vessel is equipped with a single Yanmar diesel engine (1595 hours) and NexGen UCM2 - 5.5kw Generator installed in 2016 (656 hours).

Basic Information

Category: Cruiser

Sub Category: Cabin Cruiser

Model Year: 2001

Year Built: 2001

Country: United States

Dimensions

LOA: 34' 0" (10.36m)

Beam: 12' 5" (3.78m)

Max Draft: 3' 6" (1.07m)

Speed, Capacities and Weight

Cruise Speed: 13 Kts. (15 MPH)

Max Speed: 22 Kts. (25 MPH)

Water Capacity: 94 Gallons

Holding Tank: 35 Gallons

Fuel Capacity: 251 Gallons

Accommodations

Total Cabins: 1

Hull and Deck Information

Hull Material: Fiberglass

Engine Information

Engines: 1

Manufacturer: Yanmar

Model: 6LY2-STE

Engine Type: Inboard

Fuel Type: Diesel

DETAILED INFORMATION

Description

A scaled down version of the Legacy 40, the Legacy 34 is a high-quality cruiser built by Freedom Yachts. Originally designed by Mark Ellis, who has designed many many Downeast style vessels which share that New England look. The 34 is built with a sharp entry, a deep skeg for directional stability, and prop and rudder protection.

The interior of the Legacy 34 will easily suit the needs of a cruising lifestyle, and the level of fit and finish is superb. The extra large windows provide all-around visibility, and the varnished mahogany woodwork and teak-and-holly sole add much to the traditional feel of the vessel.

Notable features include a deck door at the helm, wide sidedecks, and a separate stall shower in the head.

This vessel is equipped with a single Yanmar diesel engine (1595 hours) and NexGen UCM2 - 5.5kw Generator installed in 2016 (656 hours).

Items completed this year:

- annual cap rail varnish done- replaced Robertson autopilot screen - replaced Furuno monochromatic screen with upgraded color unit - installed new depth sounder & new transducer - replaced Bennett trim tab actuators & control unit - replaced holding tank vent filter - new Petit Trinidad bottom paint, speed coating on prop & rudder- 9 above water plastic thru hulls replaced with stainless steel fittings - new bottom zincs- engine & generator zincs replaced- annual hull polish & wax - Bottom Paint

"Loon's Call" is equipped with two a/c units, one for the salon 16,000 BTU, and the other for the forward stateroom 24,000 BTU

Top speed is around 21-22 knots (with everything full). Cruise 7.5-8.5 knots at 1750 rpm burning 2.5-3.0 gal per hour (current, water & fuel load effects). Current owner would occasionally cruise at 13.5- 15.5 knots at 2600-2750 rpm and get around 1.3 to 1.1 m NM per gal.

Accommodations:

Number of berths - 1 queen (island berth, with 4 drawers & storage under) - 1
child size double (made from pullout of settee)

Number of heads - 1 with Vacuflush toilet & separate shower stallSalon:

- storage under all settee seating- fully adjustable Stidd helm chair & Nav chair- opening top navigation station- starboard side/helm sliding door- 360 degree sitting & standing sight lines - 3 engine room access floor panels (1 primary)- starboard TV/storage/liquor cabinet- flatscreen

TV/DVD (12 volt)- teak & holly sole- multiple 120 volt outlets- adjustable interior 12 volt lighting- 2 overhead hatches with screen/shades- 2 side & 2 rear opening windows with screens- aft door to cockpitGalley:

- Force 10, propane 3 burner stove/oven- Sharp convection/microwave- double stainless steel sink, with built in soap dispenser- under counter, steps & stove storage- above counter & pantry storage- Norcold 120 & 12 volt refrigerator/freezer- 120 volt outlets (GFI)- large SS opening port (with screen)& overhead Bomar hatch (with screen/shade)- air conditioning/heat ventHead:

- Vacuflush toilet- separate shower stall (actually human sized) with stowable Leifheit clothes drying rack- above & below storage areas with separate large storage area for towels, etc.- large SS opening port (with screen) & overhead Bomar hatch (with screen/shade)- holding tank with deck pump out, and alternate electric macerator overboard discharge pump- 120 volt outlets (GFI)Electronics & Helm:

- Stidd fully adjustable helm & navigaton chairs- destroyer type wheel- fuel gage- 120 & 12 volt outlets- Garmin echomap SV (2016) with US charts- Simrand/Robertson AP 20 autopilot (new screen 2019)- Furuno radar (new color display 2019)- Yanmar engine display panel - Sidepower bow thruster controls- Muir windlass controls (also foot buttons at bow)- ACR Spotlight controls - Raymarine depth sounder- Standard Horizon Matrix AIS/GPS - VHF radio/AIS- 3 windshield wiper controls - engine room blower switch- nav & anchor light switches - switches for 3 bilge pumps (fore, mid, aft) & audible alarms for each- Fireboy engine room fire extinguishing system controls- Bennett trim tab controls & display- Ritchie compass- Chartlight- 2 overhead Bomar hatches (with screens/shades)- Caframo 3 speed adjustable fan-generator control panel- 12 & 120 volt electrical panelDeck:

- Muir electric windlass (helm & fore deck controls)- Delta primary anchor with 150' 5/16" chain- Fortress secondary anchor with 30' chain & 150' nylon rhode- deck/cockpit lighting- 1 1/4" handrails (at above average height - added safety)- teak cap rail- dual anchor chain/fender/line storage lockers (drain overboard)- seawater anchor wash down outlet (mounted in port bow storage locker)- cockpit storage locker/bench seating with propane storage- lazzerette storage port/starboard- teak swim platform - full cockpit awning- stern door- hot & cold water cockpit freshwater shower- 30 & 50 AMP electric receptaclesElectrical:

- 30 & 50 AMP receptacles with separate breakers & panel switches/breakers- 12 & 120 volt electrical panel near helm- battery charger (new 2016)- 1- AGM group 31 engine start battery (2 years old)- 2-AGM 8D house batteries (2 years old)- Nexgen 5.5 KW generator (powers both pair conditioning units +)Other: - textilene screens for all windows- Sunbrella covers for all windows- dishes, silverware NOTE: Loon's Call is ready to cruise (the addition of groceries is the only requirement - unless of course you plan to eat out all the time)

Additional Information

Work/Improvements to Loon's Call since Purchase 5/4/162016- installed new 5.5 Nexgen generator - installed new Garmin Echo Chartplotter - installed new Shakespeare TV

antennae - installed new TV/DVD - installed custom Sunbrella cockpit awning - installed new macerator pump on holding tank - installed new AGM start battery & 2 - 8D house batteries - installed new battery charger - installed new cutlass bearing - installed new rudder seal- installed new kayak roof racks - Sunbrella covers made for all windows - all interior & exterior lights working- exterior opening grate covers for thru hulls installed - Petit Trinidad bottom paint, zincs replaced- annual hull polish & wax 2017- Sunbrella shades made for port & starboard windows - replaced main engine water pump seal- annual cap rail varnish done- valance cut-out at helm door- salon wood scratch repair & varnish work - annual hull polish & wax 2018- new galley faucet - new Awlgrip paint applied to deck non skid areas - starboard ports re-bedded to seal over counter leaks- annual cap rail varnish done- scratch/fading repair & varnish work in galley & head - new Sunbrella curtains made & installed - total rebuild of windlass (gearbox & motor replaced) - installed new Hurley davits - annual hull polish & wax 2019- annual cap rail varnish done- replaced Robertson autopilot screen - replaced Furuno monochromatic screen with upgraded color unit - installed new depth sounder & new transducer - replaced Bennett trim tab actuators & control unit - replaced holding tank vent filter - new Petit Trinidad bottom paint, speed coating on prop & rudder- 9 above water plastic thru hulls replaced with stainless steel fittings - new bottom zincs- engine & generator zincs replaced- annual hull polish & wax - Bottom Paint The above list is available with amounts spent and available upon request.

Exclusions

Owner's personal belongings.

Disclaimer

The Company offers the details of this vessel or yacht in good faith but cannot guarantee or warrant the accuracy of this information nor warrant the condition of the vessel. A buyer should instruct his representatives, agents, or his surveyors, to investigate such details as the buyer desires validated. This vessel or yacht is offered subject to prior sale, price change, or withdrawal without notice.

PHOTOS

DJI_0043



DJI_0044



DJI_0045



DJI_0047



DJI_0048



DJI_0049



7168809_20191101135156693_1_XLARGE



7168809_20190802161612700_1_XLARGE



7168809_20190802161632158_1_XLARGE



7168809_20190802161648630_1_XLARGE



7168809_20190802161811459_1_XLARGE



7168809_20191101135101780_1_XLARGE



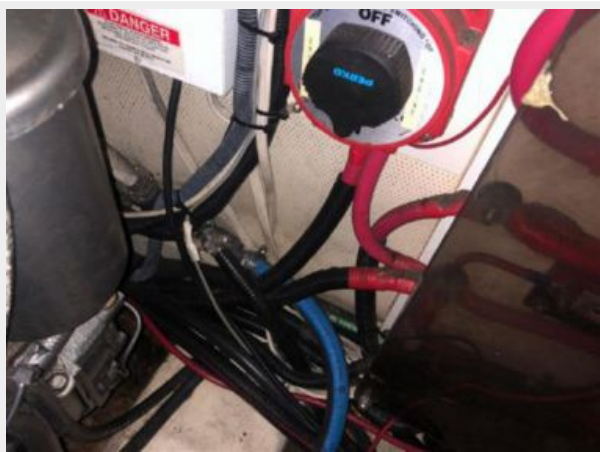
7168809_20190802162900985_1_XLARGE

7168809_20191112160647956_1_XLARGE



7168809_20190802163019763_1_XLARGE

7168809_20190802163101381_1_XLARGE



7168809_20190802163549164_1_XLARGE

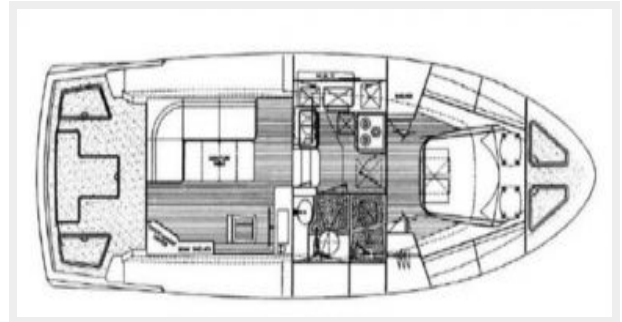
7168809_20190802163147445_1_XLARGE



7168809_20190802163701924_1_XLARGE



7168809_20190802163828232_1_XLARGE



CONTACTS

Andrey Shestakov, leading yacht broker of the sales department of Shestakov Yacht Sales Inc. Shestakov Yacht Sales Inc., the official representative of the Miami/Fort Lauderdale FL headquarters.

Contact details

Email: **andrey@shestakovyachtsales.com**

Web: shestakovyachtsales.com/en/

Telephones

USA: **+1(954)274-4435**

Office hours

Monday – Saturday: **9:00 - 21:00 EDT**

Sunday: **closed**

Address



Harbour Towne Marina, 850 NE 3rd St,
STE 213, Dania, FL 33004