

NOMAD — AMEL



Судостроитель: AMEL

Год постройки: 2002

Модель: Крейсерская яхта

Цена: **ЦЕНА ЯХТЫ ПО ЗАПРОСУ**

Местонахождение: United States

Длина общая: 52' 6" (16.00m)

Ширина: 15' 1" (4.60m)

Макс. осадка: 6' 7" (2.01m)

Купить **Nomad — AMEL** а также выбрать подходящую вам яхту из нашего каталога яхт вам поможет опытный яхтенный брокер Андрей Шестаков. На сегодняшний день компания **Shestakov Yacht Sales Inc.** имеет большое количество яхт в собственном списке продаж, а также тесно сотрудничает со всеми крупными яхтенными производителями по всему миру.

Для того чтобы купить яхту **Nomad — AMEL** а также проконсультироваться по любому вопросу связанному с покупкой, продажей, чартером яхт позвоните по телефону **+7(918)465-66-44**.

ОГЛАВЛЕНИЕ

ОГЛАВЛЕНИЕ	2
ХАРАКТЕРИСТИКИ	5
Обзор	5
Основная информация	6
Размеры	6
Скорость, вместимость и масса	6
Размещение	6
Корпус и палуба	6
Информация о двигателе	7
ПОДРОБНОЕ ОПИСАНИЕ	8
Overview	8
Исключения	13
Отказ от ответственности	13
ФОТОГРАФИИ	14
2	14
3	14
5	14
4	14
6	15
7	15
8	15
9	15
10	15
11	15
12	16
13	16
14	16
15	16

16	16
17	16
18	17
19	17
20	17
21	17
22	17
23	17
24	18
25	18
27	18
26	18
28	18
29	18
30	19
31	19
32	19
33	19
34	19
35	19
36	20
37	20
38	20
39	20
40	20
41	20
42	21
43	21
44	21

45	21
46	22
47	22
48	22
49	22
50	23
51	23
53	23
52	23
КОНТАКТЫ	24
Контактная информация	24
Телефоны	24
Время работы	24
Адрес	24

ХАРАКТЕРИСТИКИ

Обзор

I would like to introduce you to Nomad. She was born in 2002 in La Rochelle, France. Henri Amel and a host of employee owners built her to sail around the world. Amel model, Super Maramu 2000 hull number 362. Like all Amel Super Maramu 2000s, she is robust, comfortable, easy to handle and thoughtfully designed with many safety features, including four watertight compartments. Nomad is a fine example of this legendary model. Her highlights include:

- Upgraded Yanmar 110 HP engine with 1,420 hours (2013)
- 7.5 KW generator with 1,160 hours (2013)
- Sails - Main and Mizzen (Nov 2019)
- Forward Ballooner (2019)
- All Standing Rigging Replaced (2019/2020)
- (12) AGM House Batteries (2019) and (1) starter battery (2018)
- Coppercoat bottom paint applied (2017)
- Boot Stripe Repainted (2017)
- Bow Thruster - retractable
- Winslow Ocean 6-Person Life Raft (2019)
- Washing Machine (2016)
- Dishwasher
- Refrigerators and Freezers
- 3-Zone Reverse Cycle AC/Heat
- Diesel heat
- Watermaker (Rebuilt 2017)
- Electric winches
- Electric Sail Handling
- Hard Dodger
- Electric Heads
- Davits
- (2) 235 W Solar Panels

Please see the detailed listing, video and photos. Nomad recently returned from Martinique and is in the water in Charleston, SC.

Основная информация

Тип судна: Крейсерская яхта

Модельный год: 2002

Год постройки: 2002

Страна: United States

Размеры

Длина общая: 52' 6" (16.00m)

Длина по ватерлинии: 41' 4" (12.60m)

Ширина: 15' 1" (4.60m)

Макс. осадка: 6' 7" (2.01m)

Длина привального бруса: 53' 0"
(16.15m)

Скорость, вместимость и масса

Водоизмещение: 35840 Pounds

Вместимость воды: 264 Gallons

Вместимость сточного бака: 13 Gallons

Объем топливного бака: 158 Gallons

Размещение

Всего кают: 2

Всего ком. состава: 2

Корпус и палуба

Материал корпуса: Fiberglass

Дизайнер экстерьера: Henry Amel & J.
Carteau

Информация о двигателе

Двигатели: 1

Производитель: Yanmar

Модель: 4JH3 HTE

Тип двигателя: Inboard

Тип топлива: Diesel

ПОДРОБНОЕ ОПИСАНИЕ

Overview

Deck and Cockpit The Super Maramu 2000 has a wide and well-established cockpit with a protected helm station. There is easy access to the engine controls, bow thruster control, sail controls, windlass control, autopilot, wind speed, boat speed, wind angle, depth and chain counter. There are three lockers in the cockpit, two large lockers on the foredeck, one large locker port side mid-ship, and one locker on the aft deck. The engine room is accessible via a watertight hatch in the cockpit floor. Wide side decks, firm bulwarks, handrails, and stainless steel side rails make the decks easy to safely navigate. The foredeck is large enough to store a rib and Nomad is equipped with davits. Access to the water or rib is a cinch from the transom. Steps lead down to a sugar scoop with a ladder that folds out.

- Jacklines
- Center cockpit with fully protected helm seat
- Hard dodger
- Raised folding bimini with extension and detachable shades
- Separate cockpit enclosure
- Seven watertight lockers
- Aluminum ladder/gangway combination stored on deck
- Five opening hatches with two in the aft cabin
- Four opening portholes
- New aft cabin Ocean Series hatch with mesh/dark slide covers (2019)
- Double bow anchor rollers
- Anchors: 94 lb Rocna, 45 lb CQR, Fortress FX55, 45 lb Plough
- 250' of 10mm anchor chain (2017), made in the USA
- 30' of chain with 250' rode for the secondary anchor (2020)
- Anchor wash down with cockpit control
- WINDLASS - Lofrans Tigress 1200W windlass. New gypsy (2016), serviced/motor replaced (2019)
- Quickline 400' Kevlar stern line
- Cockpit table
- Freshwater hot/cold deck shower
- Magma Newport stainless steel BBQ mounted on rail
- DAVITS - Atkins & Doyle 700lb capacity (2008)
- RIB - Highfield aluminum 11' rib (Hypalon tubes) with lockable compartment (2014)
- OUTBOARD - Nissan 18HP - 2-stroke (2012)
- OUTBOARD - Yamaha 5HP - 4-stroke

Sails and RiggingThe ketch rig on the Amel Super Maramu 2000 allows for easy sail management in a variety of conditions. Features such as in-mast furling main and mizzen, electric furling jib, (3) electric winches, and push button furling controls at the helm make the Amel easy to sail. Nomad is equipped with six sails:

- Main - Q Sails (11/2019)
- Mizzen - Q Sails (11/2019)
- Genoa - North Sails (11/2013)
- Ballooner - Q Sails (11/2019)
- Mizzen Ballooner
- Asymmetrical spinnaker (2015) with a detachable bowsprit
- Standing rigging replaced (not including the forestay) (2/2018) Stay-Lok fittings. The work was performed by Nance and Underwood in Ft. Lauderdale, FL
- Forestay replaced (2/2019) by Caribe Marine in Martinique
- New main sheet, new mizzen sheet, new mizzen halyards (2019)
- Amel aluminum spars and booms.
- There are eleven Lewmar winches, including two electric winches (LEWMAR 58 CEST) for the jib sheets and one electric winch (LEWMAR 44) under the mizzen mast for the main sheet.
- The electric jib sheet winches have a twin control system; switches are located on the back of the cockpit's benches and at the helm.
- Push button helm sail controls include, jib furling, jib sheet winch trim, mainsail in-mails furling and main sheet out-haul.
- The winch to operate the main sheet traveler is located in the cockpit, on starboard side.
- Two pairs of poles and jockey poles are stowed on both sides of the front deck when not used. The AMEL twin pole system allows to sail wind free up to 160° off. When the true wind is more than 20 knots, furl the jib and ballooner together.
- Control of jib sheet car traveler (Antel) next to the cockpit
- Harken self-tacking traveler system for a decommissioned staysail (2014) with Dynema sheets (2017). The traveler is still mounted to the deck. The stay for the staysail was removed by a professional rigger in Martinique in 2020 before Nomad sailed to Charleston, SC.

MechanicalDISCLOSURE: Per the Seller, the whole engine room was refurbished with new pumps and wiring in 2013 due to a water maker failure along with new engine and generator. The work was performed by New England Boat Works.

- 2013 110 HP Yanmar (approximately 1,420 hours)
- 2013 Onan 7.5 KW generator (approximately 1,160 hours)
- H6 Autoprop - 3-blade H6-566 (2013) with Shark line cutter.
- Spare 3-blade fixed prop
- Dual Racor 500 fuel filters
- Fuel polisher Algae-X
- The struts that support the engine room access door were replaced in 2019
- Electric oil pump for engine oil

- BOW THRUSTER - Amel retractable bow thruster (rebuilt 2019)
- Automatic fire extinguisher in engine room
- WATER MAKER - 160 liter per hour freshwater maker. All rebuilt with new membranes (2017), pump rebuilt (11/2019)
- (3) AC/HEATING UNITS. The units in the V-berth and salon were rebuilt in 2010. New AC unit with remote in aft cabin (2018)
- DIESEL FIRED HEATER
- (1) Hella fan in the engine room
- 110V Shopvac
- (10) 5 gallon portable fuel tanks storage in the port storage area
- A list of spare parts if available upon request.

ElectricalNomad, being French, is bilingual in power. Natively 220V 50 Hz and 24V DC (12 batteries and a starter battery). She can however “speak” 110V. The batteries are stored in a watertight compartment, under the berth in the passageway. They are connected in two separate circuits as follows:

- 12V circuit: One group 27 battery (12V) (March/2018) feeds the starters of both main engine and generator.
- 24V circuit: Twelve AGM batteries, group 27/31 (Nov. 2019) connected in series two by two and then in parallel, make a 24V battery group which feeds all the 24V equipment on the boat.
- GENERATOR: 220V 50 Hz 7.5 KW Onan Marine GenSet (MDKA) with 1,160 hours (11/2013)
- SOLAR PANELS: 2 X 235 Watts with Outback Controller (2012)
- 220-volt AC shore power system
- Charging: 140 amp (24V) and 130 amp (12V) alternators belted to Yanmar propulsion engine with serpentine Belt.
- Charging: 100 amp (2017) and 30 amp Dolphin (new 2014) chargers powered by Onan generator or shore power
- Charging: 105 amp Magma charger and inverter pure sine powered by Onan generator or shore power installed 2016 and serviced at the factory in Jan 2018
- Switching panel by Blue Sea for shore Power for 110/220V 50/60HZ house battery bank.
- Mastervolt 24/500 switch mode sine wave inverter
- DC/AC Inverter: 2300 watt Power Bight sine wave (220V 60 hz)
- DC/AC Inverter: 1800 watt Xantrex sine wave (220V 50 hz)
- Xantrex LINK Lite Battery Monitor for starting battery (Feb 2017)
- (2) Xantrex Link Lite 10 battery monitor (2017) for the house battery bank
- (2) 12V & (1) 24V outlets at Nav station (2) 12V outlets at helm station
- All light bulbs are LED

Plumbing

- WATER MAKER - 160 liter per hour. Rebuilt with new membranes (2017), pump rebuilt (11/2019)

- Seagull water filter at galley sink (11/2019)
- Electric Jabsco toilet in aft head
- Lavac electric/manual in forward head
- (2) holding tanks
- (2) interior hot/cold pressurized showers
- (1) hot/cold cockpit shower
- WASHING MACHINE - Top-loading 220V clothes washer (2016)
- 2 Jabsco fresh water pumps
- Shurflo fresh water accumulator tank
- Isotemp marine hot water tank 5 gallon (2015)
- Anchor wash down with cockpit control (new pump 2020)
- Central bilge system with automatic and manual bilge pumps
- Back up portable bilge pump wired directly to batteries

Electronics and Navigation

- Standard Horizon CPV550 Chartplotter 12 inch Screen with VHF FM Transceiver and Hailer at helm (2018)
- Automatic Identification System (AIS) dual-channel receiver with antenna splitter Sitex 8 inch Chartplotter screen at helm
- Raymarine autopilot EVO course computer with gyro (2016)
- Linear drive autopilot motor on rudder quadrant
- Second autopilot motor (chain rotary drive) Rebuilt Nov 2013
- B&G Instruments speed, wind instruments with displays at helm and nav station Raymarine depth speed and water temp (2/2017)
- Furuno Marine Radar Model 1832 Furuno GPS Navigator GP-80
- All above on NMEA network
- C-Map chart cartridge for all of North America usable in either chartplotter
- ICOM M710 SSB radio with ICOM AT 140 automatic tuner, whip antenna
- Canon 100i color printer
- Iridium satellite phone (Motorola 9505) with extra battery and carrying case
- Standard Horizon waterproof VHF
- Alpine CD player with USB & computer connectors and controls
- Speakers in saloon and cockpit

Safety Features and Equipment There are four watertight compartments on the Amel Super Maramu 2000, including the chain locker, engine room, forward cabin, aft cabin and stern locker. Watertight bulkheads fitted with watertight doors separate the forward and aft cabins from the salon. Next to both watertight doors, there are two valves to shut the watertight compartments' outflow hoses. Both manual and electric bilge pumps dry out the bilge in the engine room. This bilge collects the water from both shower basins and the chain locker as well. The engine room is protected by an inert gas fire automatic extinguisher and there is a remote fuel shut off valve above the fuel tank. The emergency tiller is located in the saloon, under the starboard berth and made of 3 parts. All incoming raw water enters the vessel via a single through-hull with a ballcock valve located in a sea chest. This safety feature dramatically reduces the number of through hulls

below the waterline.

- LIFE RAFT: Winslow Ocean 6-person (Nov 2019) certified until 2023
- Garmin GPS
- Jacklines on deck
- (2) dive tanks 60' hose with regulator
- Central bilge system with automatic and manual bilge pumps
- Back up portable bilge pump wired directly to batteries
- Whale Titan manual emergency pump
- Masthead tricolor and deck-level running lights
- Ditch Bag with flares, solar blankets, Garmin GPS & EPIRB 406 Lifesling 2 & Type IV Horseshoe Buoy with Strobe Light
- Ditch bag with flares, solar blankets, first aid, life raft survival equipment, foot & water
- ACR 406 EPIRB with GPS
- Lifesling 2 & Type IV Horseshoe Buoy with Strobe Light
- Parachute anchor with 200' of 1" inch nylon line (2015)
- Automatic fire extinguisher in engine room
- (2) CO2 monitors
- (3) handheld fire extinguishers
- Continuous stainless steel railings full length of the boat
- All removable floorboards in the vessel have lock downs

AccommodationsThe interior of the Amel Super Maramu 2000 is designed for safety, comfort and livability. There are two staterooms, two heads, a spacious salon, a practical navigation station, secure galley, hallway with a pilot berth and a large watertight engine room. The joinery is crafted of beautiful African Mahogany with smartly designed features such as wooden lee boards for each berth. Nomad's joinery is in exceptional condition and the interior is very clean. Her upholstery and curtains are in serviceable condition but nearing the end of their useful life. Otherwise, the interior of Nomad is very nice and feels rich and secure. The vessel is packed with amenities that make spending extended amounts of time aboard Nomad a pleasure. Some of the more notable features include air conditioning, heat, a washing machine, dishwasher, water maker, LED lighting, fans, comfortable berths, generous storage and much more. It's obvious that a lot of thought went into designing a practical interior for extended cruising. The blue portions of the cabin sole open to reveal a huge amount of storage

- LED interior lighting
- (3) AC/heat units
- Diesel fired heating
- Safe in the aft cabin
- Washing Machine
- All berths are equipped with wooden lee boards

GalleySecure U-shape galley located on the port side near the companionway. Features include:

- Generous storage above and below the counters

- Storage below the cabin sole
- Corian counter
- (2) 24V electric deep freezer/refrigerators in the salon
- Front opening 24V refrigerator/freezer in the galley (2020)
- Top-loading stainless steel dishwasher
- Sink with hot/cold pressure water
- Force 10 three- burner stainless steel propane stove with oven and boiler (2015)
- Isolated and airtight propane gas compartment with solenoid valve
- (2) 20lb aluminum propane bottles in sealed gas compartment plus (1) 20 lb aluminum tank for BBQ
- 220V microwave/convection oven
- Built-in trash can
- Galley exhaust fan
- Solid Maple cutting board installed over the clothes washer

Notes

- Bottom Paint - Coppercoat (1/2017) Good for 10 years plus. The 2017 application was the second time coppercoat was applied to the bottom
- New Awlgrip boot stripe (2017)
- Nomad was last hauled in 2019
- The current owner has owned the vessel for 3 years.
- Sailed from Martinique to Charleston in May of 2020
- A list of spare parts is available upon request

Исключения

При продаже яхты исключаются личные вещи владельца.

Отказ от ответственности

Компания предоставляет описание судна или яхты добросовестно, но не может гарантировать точность этой информации, а также не ручается за техническое состояние. Покупатель должен проинструктировать своих агентов или оценщиков исследовать представленную информацию более подробно, по собственному желанию. Продажа судна или яхты, изменение цены или снятие с продажи будет происходить без предварительного уведомления.

ФОТОГРАФИИ

2



3



5



4



6



7



8



9



10



11



12



13



14



15



16



17



18



19



20



21



22



23



24



25



26



27



28



29



30



31



32



33



34



35



36



37



38



39



40



41



42



43



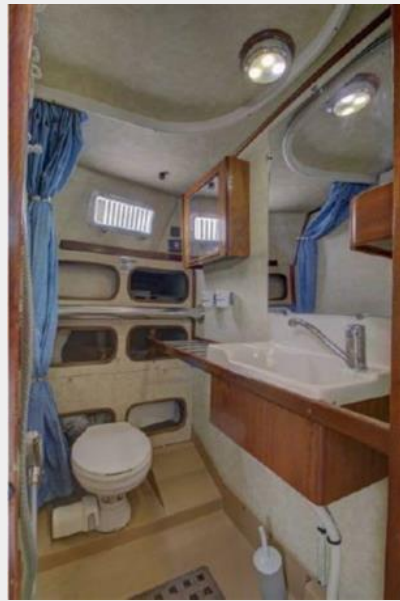
44



45



46



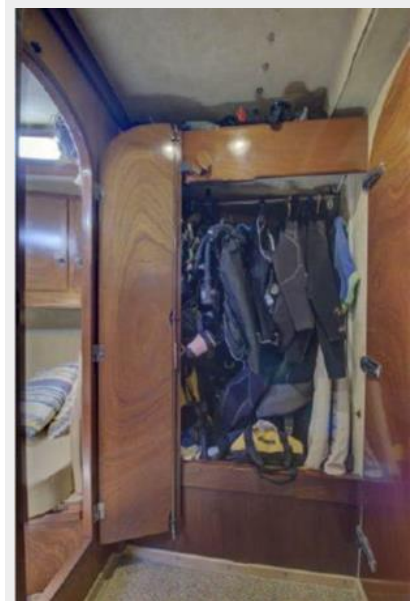
47



48



49



50



51



52



53



КОНТАКТЫ

Андрей Шестаков (Andrey Shestakov) – ведущий яхтенный брокер отдела продаж яхт и судов компании Shestakov Yacht Sales Inc. Официальный представитель Shestakov Yacht Sales Inc. для русскоговорящих клиентов в центральном офисе компании в Майами/Форт Лодердейл/Флорида/США.

Контактная информация

Email: andrey@shestakovyachtsales.com

Web: shestakovyachtsales.com

Телефоны

Краснодарский край: **+7(918)465-66-44**

США, Майами, Флорида: **+1(954)274-4435**

Время работы

Понедельник – Суббота: **9:00 - 21:00**
EDT

Воскресенье: **Закрыто**

Адрес



Harbour Towne Marina, 850 NE 3rd St,
STE 213, Dania, FL 33004