

BLUE MOON — BENETEAU



Судостроитель: BENETEAU

Год постройки: 2003

Модель: Представительская парусная яхта

Цена: **ЦЕНА ЯХТЫ ПО ЗАПРОСУ**

Местонахождение: United States

Длина общая: 41' 8" (12.70m)

Ширина: 13' 0" (3.96m)

Мин. осадка: 4' 9" (1.45m)

Купить **Blue Moon — BENETEAU** а также выбрать подходящую вам яхту из нашего каталога яхт вам поможет опытный яхтенный брокер Андрей Шестаков. На сегодняшний день компания **Shestakov Yacht Sales Inc.** имеет большое количество яхт в собственном списке продаж, а также тесно сотрудничает со всеми крупными яхтенными производителями по всему миру.

Для того чтобы купить яхту **Blue Moon — BENETEAU** а также проконсультироваться по любому вопросу связанному с покупкой, продажей, чартером яхт позвоните по телефону **+7(918)465-66-44**.

ОГЛАВЛЕНИЕ

| | |
|-------------------------------|----|
| ОГЛАВЛЕНИЕ | 2 |
| ХАРАКТЕРИСТИКИ | 3 |
| Обзор | 3 |
| Основная информация | 3 |
| Размеры | 4 |
| Скорость, вместимость и масса | 4 |
| Размещение | 4 |
| Корпус и палуба | 4 |
| Информация о двигателе | 4 |
| ПОДРОБНОЕ ОПИСАНИЕ | 5 |
| Overview | 5 |
| Исключения | 11 |
| Отказ от ответственности | 12 |
| ФОТОГРАФИИ | 13 |
| 040 | 19 |
| 041 | 20 |
| 043 | 20 |
| КОНТАКТЫ | 21 |
| Контактная информация | 21 |
| Телефоны | 21 |
| Время работы | 21 |
| Адрес | 21 |

ХАРАКТЕРИСТИКИ

Обзор

Brokers' Comments:

This is a VERY RARE FIND FRESH WATER ONLY LIMITED EDITION 3 CABIN OCEANIS 411, well maintained and in excellent condition throughout (inside and out). Blue Moon is pristine, having spent a lifetime sailing in the Great Lakes (Michigan & Ontario). Never chartered, no salt. She's definitely clean and sleek! With more than 400

Oceanis 411 boats sold worldwide since it was introduced in 1997, it has joined the ranks of modern cruising classics as one of the more popular and successful 40-footers of all time. Beneteau only Produced 60 of the 3 cabin version and even fewer of the Limited Edition, so this truly is a RARE find. There is a NEW 2017 furling main (North Sails), 2018 140% genoa (North Sails), a like new Beneteau brand gennaker and a NEW 2017 Dodger (White Lake Canvas Company) on the boat. **SHE'S FAST!**

2018 Survey Available

Cruising World, March 1998:

Best Value in a Full-Size Cruiser

Основная информация

Тип судна: Представительская парусная **Модельный год:** 2003
яхта

Год постройки: 2003

Страна: United States

Размеры

Длина общая: 41' 8" (12.70m)

Длина по ватерлинии: 36' 1" (11.00m)

Ширина: 13' 0" (3.96m)

Мин. осадка: 4' 9" (1.45m)

Трапы: 60' 5" (18.41m)

Длина привального бруса: 41' 0" (12.50m)

Скорость, вместимость и масса

Водоизмещение: 17196 Pounds

Вместимость воды: 158 Gallons

Вместимость сточного бака: 39 Gallons

Объем топливного бака: 40 Gallons

Размещение

Всего кают: 3

Всего ком. состава: 2

Корпус и палуба

Материал корпуса: Fiberglass

Комплектация корпуса: Fin & Bulb

Информация о двигателе

Двигатели: 1

Производитель: westerbeke

Модель: 4JH3E

Тип двигателя: Inboard

Тип топлива: Diesel

ПОДРОБНОЕ ОПИСАНИЕ

Overview

Beneteau Oceanis 411

A straightforward family cruising boat with all the amenities, the Beneteau 411 seemed to exemplify outstanding value in a 40-plus footer. “The price is very good”, said Bill Lee, “but the boat has a lot more going for it. The whole cockpit is outstanding. It’s got a very, very good open transom arrangement, a wheel you can easily get around, and big cockpit seats that are comfortable to sleep on.

And down below, there’s a very comfortable two-stateroom, two-head layout (a three-stateroom version is also available). I liked what Beneteau has done this year.” Peter Hogg also gave the 411 high marks for user-friendliness. “All the halyards are led back to the cockpit and the winches and sheets are right at hand, so this is an easy one to singlehand or steer when the husband or wife is off watch,” he said. “One of the best innovations we’ve seen over the years, one that Beneteau has used successfully on this boat, is the split backstay. It really makes access to the aft boarding step and swim platform very easy. It’s one of the boat’s best features, something that will make it as much fun at anchor as underway.”

USCG

Certificate of Documentation

DESIGNER

Jean Marie Finot (Group Finot)

SURVEY (2018)

Available Upon Acceptable Offer

SPECIFICATIONS & DIMENSIONS

LOA: 41 ft 8 in

Beam: 13 ft 0 in

LWL: 36 ft 1 in

DRAFT: 4 ft 9 in

Maximum Draft: 4 ft 9 in

Displacement: 17,196 lbs

Ballast: 5,236 lbs, Bulb Fin

Bridge Clearance: 60 ft 5 in

ENGINE

- Engine Power: 56 HP (upgrade option from the standard 42 hp Westerbeke)
- Engine Brand: Yanmar
- Year Built: 2003
- Engine Model: 4JH3E
- Engine Type: Inboard
- Engine/Fuel Type: Diesel
- Engine Hours: 1,394
- Racor Separator
- Propeller: 3 blade propeller
- Drive Type: Direct Drive

TANK CAPACITIES

- Fresh Water Tanks: 2 (158 Gallons)
- Fuel Tank: (40 Gallons)
- Holding Tanks: (39 Gallons)

HULL/DECK/SAILS

- Hull Professionally Repainted with Awlgrip (Awlcraft 2000) by Torreson Marine
- Blue-Water Dodger 2016 (SS & canvas, high structural rigidity)
- SS Bow Rail
- SS Stern Rails w/Seats
- Double Lifelines w/Gates
- Genoa Tracks
- Mainsheet Traveler on Cabin TopSheet Stoppers for Control Lines
- Two Lewmar #54 ST Primary Winches (Over sized, Limited Edition Feature)
- Two Lewmar #44 ST Halyard Winches (Over sized, Limited Edition Feature)
- SS Lewmar Ports (Limited Edition)
- SS Lewmar Hatches (Limited Edition)
- SS Dorade Vents (Limited Edition)
- 2018 Lewmar Bruce 44 Anchor & New 200 ft Rode 2018
- Pro Furl Headsail Roller Furling
- 2017 Furling Mainsail (North Sails)
- 2018 140% Headsail (North Sails)
- Beneteau Gennaker (like new)
- U.S. Spars In-Mast Furling Spar Deck Stepped
- Solid Vang
- Double Bow Rollers
- Simpson Lawrence Horizon Express Windlass, Remote Control at bow
- Emergency Tiller
- Opening Deck Hatches
- Opening Port Windows
- Port Lights
- Removable Transom Access with Stainless Steel Tread Bars
- Bottle Propane Locker
- GRP Moulded Drop-Leaf Cockpit Table with Icebox, 4 Glass Holders Integrated with Control Pedestal
- Leather Covered 1,000 mm Gauge Stainless Steel Steering Wheel

LIMITED EDITION ADDITIONS

- Oversized Lewmar winches (2 #54 ST primary & 2 #44 ST halyard)
- SS Lewmar Ports
- SS Lewmar Hatches
- SS Dorade Vents
- 2500W Inverter
- Beneteau Gennaker Sail
- Raymarine 6000 Autopilot
- Raymarine Tri-Data Wind/Speed/Depth
- 200w JVC Stereo/12cd Changer, 2 Speakers in Salon and 2 Cockpit
- Balmar 90A High-Output Alternator/Regulator

3 Blade MaxProp

- Extra 4D battery with Link 2000 battery monitor

MAIN SALON

- 6' 4" Headroom
- Central Settee with Storage Underneath

U Shaped Dinette Seating with Storage Behind & Underneath

- Expandable Table
- Galley Port Amidships
- Force 10 2 Burner with Oven, Propane
- Adler-Barbour Refrigeration & Freezer
- Microwave
- Double SS Sink
- Hot & Cold Water
- Large Galley Correll Work Surface
- Ample Cabinet Storage

ACCOMODATIONS

Number of cabins: 3

Number of heads: 2

FORWARD MAIN CABIN

- 6'3" Headroom
- Double Berth
- Two Drawers Under Berth
- Large Hanging Locker with Shelf on Top
- Storage Cabinet with Shelf on Top
- Two Seat Setee for Reading or Changing
- Reading & Dressing Lights
- Settee & Storage Locker
- Two Hatches, 2 Ports

FORWARD HEAD

- Marine Head (Jabsco)
- Hot & Cold Water
- Fiberglass Sink
- Three Medicine Cabinets
- Three Shelves
- Two Mirrors
- Fiberglass Shower
- One Large Hatch

AFT CABINS (2)

- 6'3" Headroom

- Double Berth (2)
- Large Hanging Locker with Shelf on Top
- Small Shelf
- Storage Under Berth
- Settee & Storage Under
- Reading & Dressing Lights
- One Hatch, 2 Ports All Opening

AFT HEAD

- Marine Head (Jabsco)
- Fiberglass Sink
- Medicine Cabinet
- Shelf on Hull-side
- Mirror
- Shower
- One Opening Port

NAVIGATION STATION

- Chart Table
- Electrical and Electronics Panels
- Navigators Seat w/ Storage Under
- Storage Shelf w/2 Cabinets Under
- Two Large Side Storage Pockets
- One Opening Port

ELECTRICAL

- Shore Power
- Shore Power Cords
- 12V Multi -Function Control Panel
- 110V Control Panel

- 110V Outlets (7)
- Battery Charger
- Three Batteries
- Halogen Lights
- Reading Lights in All Cabins
- Nav. Lights
- Stern Light
- Anchor Light
- Deck/Steaming Light
- Bilge Pumps (2)
- Shower Sump Pumps (2)
- Electrical Equipment Electrical Circuit: 12V
- Electric windlass
- Outside Equipment/Extras

ELECTRONICS

- Raytheon ST 60 Wind
- Raytheon ST 60 Tridata Speed/Depth/ Temp.
- Raytheon St 6001 Autopilot (New Head 2018)
- VHF Radio replaced 2016 with Standard Horizon MMSI AIS WAAS GPS GX1700 + Remote Control/Mic
- JVC Ch-X1100 12 Disc CD Changer
- JVC KS-FX480 AM/FM/CD Stereo w/Speakers 200w

EXTRAS

- Cockpit hot & cold shower on walk-out transom
- 2017 Custom fitted canvas storage boat cover
- Steel cradle

Исключения

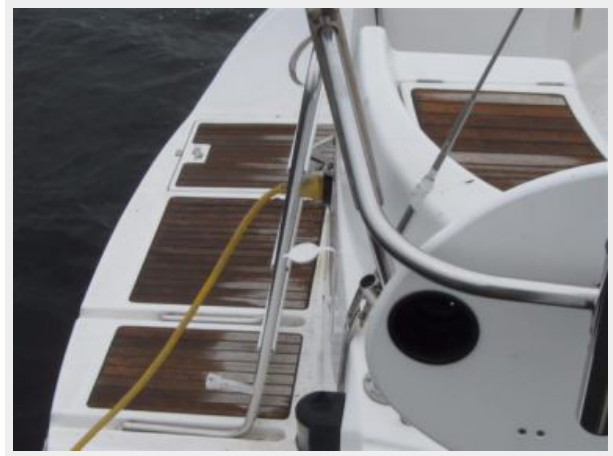
При продаже яхты исключаются личные вещи владельца.

Отказ от ответственности

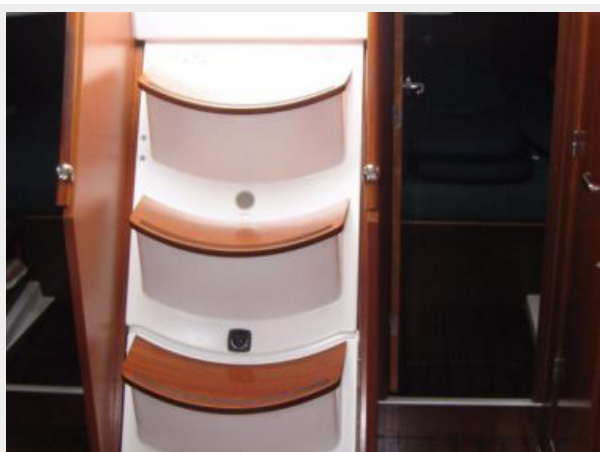
Компания предоставляет описание судна или яхты добросовестно, но не может гарантировать точность этой информации, а также не ручается за техническое состояние. Покупатель должен проинструктировать своих агентов или оценщиков исследовать представленную информацию более подробно, по собственному желанию. Продажа судна или яхты, изменение цены или снятие с продажи будет происходить без предварительного уведомления.

ФОТОГРАФИИ

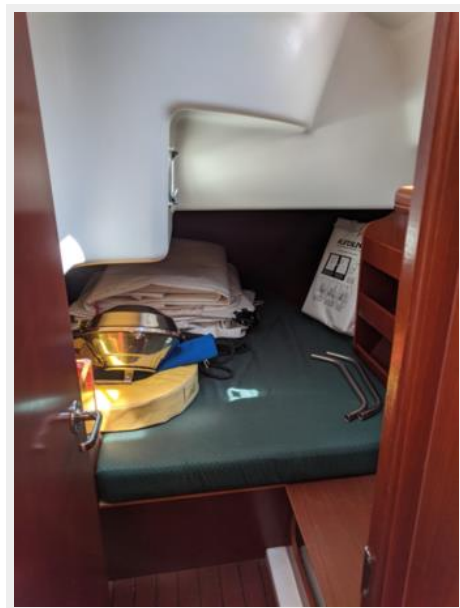


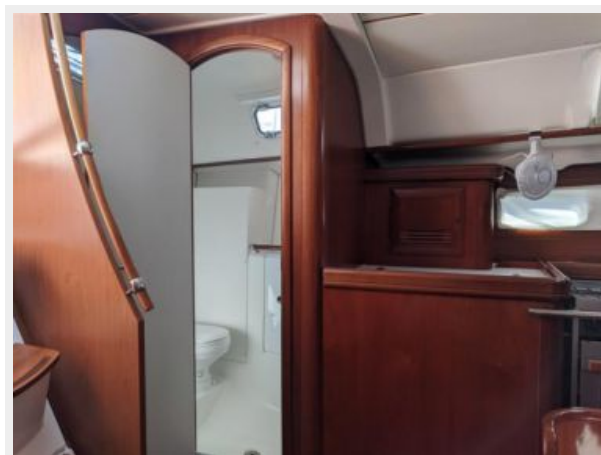
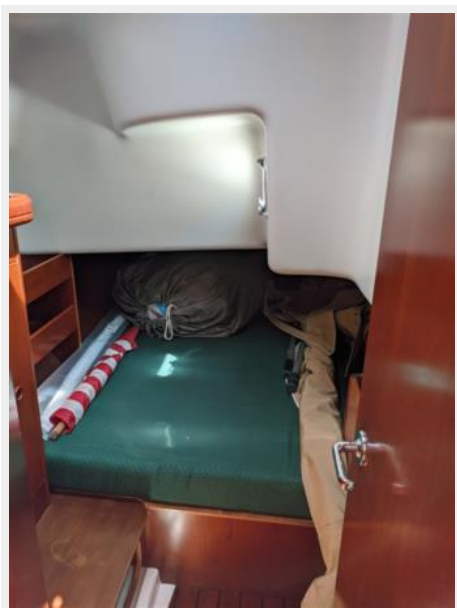




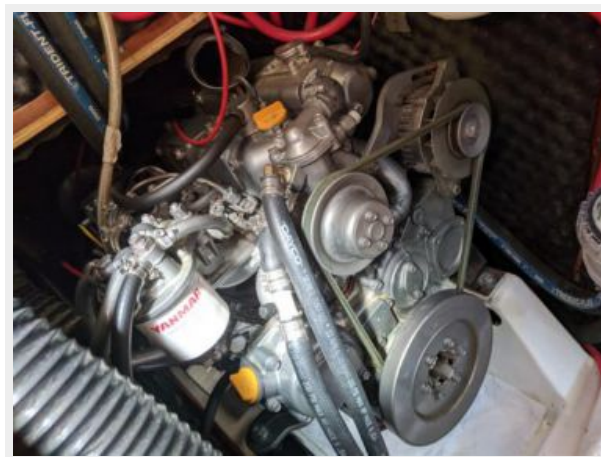








040



041



043



КОНТАКТЫ

Андрей Шестаков (Andrey Shestakov) – ведущий яхтенный брокер отдела продаж яхт и судов компании Shestakov Yacht Sales Inc. Официальный представитель Shestakov Yacht Sales Inc. для русскоговорящих клиентов в центральном офисе компании в Майами/Форт Лодердейл/Флорида/США.

Контактная информация

Email: **andrey@shestakovyachtsales.com**

Web: shestakovyachtsales.com

Телефоны

Краснодарский край: **+7(918)465-66-44**

США, Майами, Флорида: **+1(954)274-4435**

Время работы

Понедельник – Суббота: **9:00 - 21:00**
EDT

Воскресенье: **Закрето**

Адрес



Harbour Towne Marina, 850 NE 3rd St,
STE 213, Dania, FL 33004