

## WATER DAWG — CATALINA



**Судостроитель:** CATALINA

**Год постройки:** 2006

**Модель:** Крейсерская яхта

**Цена:** ЦЕНА ЯХТЫ ПО ЗАПРОСУ

**Местонахождение:** United States

**Длина общая:** 45' 11" (14.00m)

**Ширина:** 14' 0" (4.27m)

**Макс. осадка:** 4' 11" (1.50m)

Купить **Water Dawg — CATALINA** а также выбрать подходящую вам яхту из нашего каталога яхт вам поможет опытный яхтенный брокер Андрей Шестаков. На сегодняшний день компания **Shestakov Yacht Sales Inc.** имеет большое количество яхт в собственном списке продаж, а также тесно сотрудничает со всеми крупными яхтенными производителями по всему миру.

Для того чтобы купить яхту **Water Dawg — CATALINA** а также проконсультироваться по любому вопросу связанному с покупкой, продажей, чартером яхт позвоните по телефону **+7(918)465-66-44**.

# ОГЛАВЛЕНИЕ

ОГЛАВЛЕНИЕ	2
ХАРАКТЕРИСТИКИ	6
Обзор	6
Основная информация	7
Размеры	7
Скорость, вместимость и масса	8
Размещение	8
Корпус и палуба	8
Информация о двигателе	8
ПОДРОБНОЕ ОПИСАНИЕ	9
Overview	9
Исключения	11
Отказ от ответственности	11
ФОТОГРАФИИ	12
2	12
Manufacturer Provided Image	12
Manufacturer Provided Image	12
Manufacturer Provided Image	12
6	12
7	12
8	13
(Dinghy NOT included)	13
(Dinghy NOT included)	13
(Dinghy NOT included)	13
12	13
13	13
(Dinghy NOT included)	14
14	14

17	14
16	14
19	15
18	15
20	15
21	15
22	16
23	16
24	16
25	16
26	17
27	17
28	17
29	17
30	18
31	18
33	18
32	18
34	19
35	19
36	19
37	19
38	20
39	20
40	20
41	20
42	21
43	21
44	21

---

45	21
46	22
47	22
48	22
49	22
50	23
51	23
52	23
53	23
54	24
55	24
56	24
57	24
58	25
59	25
60	25
61	25
62	26
63	26
64	26
65	26
67	26
66	26
68	27
69	27
70	27
71	27
72	28
73	28

---

74	28
75	28
76	29
77	29
79	29
78	29
80	30
81	30
82	30
83	30
84	31
85	31
86	31
87	31
88	32
89	32
90	32
91	32
93	32
92	32
<b>КОНТАКТЫ</b>	<b>33</b>
Контактная информация	33
Телефоны	33
Время работы	33
Адрес	33

# ХАРАКТЕРИСТИКИ

## Обзор

### NEW IN 2020:

- Bottom sandblasted
- 3 coats of epoxy
- 1 coat Red bottom paint
- 2 coats of Navy Blue bottom paint
- Sails refurbished.
- New Garmin 8612xsv Chart plotter and Sonar.
- New Garmin 18 inch Fantom MotionScope Doppler Radar
- New 32 inch TV, Fusion MS-AV755 Receiver and Stereo (centrally connected)
- New Dish Receiver
- New TV Antennae
- New Halyard
- Refurbished and inspected standing rigging

MORE UPGRADES LISTED BELOW This Catalina Morgan 440 is a beautiful example of a cruiser that is in excellent condition and "Ready to Cast Off". This boat has been meticulously maintained and is a MUST SEE if you're looking for a boat that is laid out to serve as a fantastic weekender with lots of family and friends, or a serious couples live aboard. This vessel has an unbelievable amount of stowage throughout the cabins. The Catalina Morgan was voted the Best Production Cruiser from 40 to 45 Feet in 2005 because it's an interesting and appropriate choice for sailors looking for a roomy, comfortable, and affordable cruising boat. And especially for the more mature crowd, whose members are increasingly challenged by the physical demands of sailing, the 440 offers a host of features specifically designed to keep them sailing longer. The benefits of a raised deck saloon are the brightness, the visibility, and the enormous space created below the sole for machinery, tankage, and stowage. All equipment and ergonomics were specifically selected and designed for comfort and ease of handling. The aft scoop is wide and low for ease of access from dock or dinghy. All mast control lines are led through rope clutches to a two-speed electric power winch on the cabin top. The boat features a starboard-side workroom with bench, If you spend serious time aboard, you'll need a workbench. In good weather you can open the cockpit locker door overhead for light and air. In the cockpit, where six people can relax together with elbow room for all and shows evidence of devoted detailing. A space between the pedestal and the table makes it easy to cross the boat to reach either jib winch. There are attachment eyes for harnesses (for going to sea), the stern gates retract into the stern rails (for clean coming and going dockside), and the backstay is offset from centerline for the sake of a stern locker above the swim step (ideal for stowing the life raft). A deep forefoot

leads aft to a low-wetted-surface profile with fin keel and a skeg-hung rudder. According to the factory, the rudder is supported by a "massive" lower bearing. A collision bulkhead separates the anchor locker from the interior. A large folding table with stout handholds protrudes forward from the pedestal. The high coamings create a deep and secure cockpit. The captive washboard companionway hatch can be locked from above and below without having to fit or stow heavy pieces, and lifting the locker lids is assisted by gas springs. At 31 inches, the lifelines are exceptionally high and have gates to port and starboard. The cabin has handholds that complement the lifelines at the same height. Three-inch bulwarks and an aggressive non-skid surface fit well into this secure layout. Additional upgrades performed:

- New AGM Type D Batteries 2019
- New Battery Charger 2019
- New Solar Panel 2019
- New Fuel Tank 2018
- New Bow Thruster 2015
- Bottom Painted every year
- Polished and Waxed every year
- 8kw Generator
- Engine and Generator serviced every year
- Refrigeration/Freezer 12v DC
- (Dinghy shown in some pictures does not convey)

## Основная информация

---

**Тип судна:** Крейсерская яхта

**Модельный год:** 2006

**Год постройки:** 2006

**Страна:** United States

## Размеры

---

**Длина общая:** 45' 11" (14.00m)

**Длина по ватерлинии:** 40' 7" (12.37m)

**Ширина:** 14' 0" (4.27m)

**Макс. осадка:** 4' 11" (1.50m)

**Длина привального бруса:** 45' 0"  
(13.72m)

## Скорость, вместимость и масса

---

**Водоизмещение:** 25528 Pounds

**Вместимость воды:** 176 Gallons

**Вместимость сточного бака:** 55 Gallons

**Объем топливного бака:** 117 Gallons

## Размещение

---

**Всего кают:** 2

**Всего коек:** 4

**Всего ком. состава:** 2

## Корпус и палуба

---

**Материал корпуса:** Fiberglass

## Информация о двигателе

---

**Двигатели:** 1

**Производитель:** Yanmar

**Модель:** 4JE3

**Тип двигателя:** Inboard

**Тип топлива:** Diesel



---

# ПОДРОБНОЕ ОПИСАНИЕ

---

## Overview

---

### Manufacturer Provided Description

The 440 combines the rugged offshore features of Morgan with the comfort, ergonomics and style of a Catalina. In order to fully enjoy the view in the 440, the main cabin sole is raised to provide great visibility from the large, wide, cabin windows. All cruisers want speed under sail, easy motion and sure, predictable handling characteristics. The hull form of the 440 is conservative and sea-kindly and designed not to pound when going to weather or powering into seas. Offering the stability of a very low center of gravity, the 440 hull is stiff and comfortable. Representing the ideal cruising shape, the stem is raked to prevent damage when deploying or retrieving the anchor. The additional flare and buoyancy forward mean dry decks.

### Electronics

- Depthsounder
- Log-speedometer
- Wind speed and direction
- Plotter
- Autopilot
- Compass
- GPS
- VHF
- Radar
- TV set

### Sails

- Furling mainsail
- Furling genoa

## Rigging

- Steering wheel

## Inside Equipment

- Bow thruster
- Electric bilge pump
- Battery charger
- Air conditioning
- Heating
- Hot water
- Oven
- Microwave oven
- Marine head
- Refrigerator
- Deep freezer

## Electrical Equipment

- Shore power inlet
- Generator
- Inverter

## Outside Equipment/Extras

- Solar panel
- Cockpit table
- Swimming ladder
- Davits
- Electric windlass

## Covers

- Bimini Top
- Spray hood

## Исключения

---

При продаже яхты исключаются личные вещи владельца.

## Отказ от ответственности

---

Компания предоставляет описание судна или яхты добросовестно, но не может гарантировать точность этой информации, а также не ручается за техническое состояние. Покупатель должен проинструктировать своих агентов или оценщиков исследовать представленную информацию более подробно, по собственному желанию. Продажа судна или яхты, изменение цены или снятие с продажи будет происходить без предварительного уведомления.

# ФОТОГРАФИИ

2



Manufacturer Provided Image



Manufacturer Provided Image



Manufacturer Provided Image



6



7



8



(Dinghy NOT included)



(Dinghy NOT included)



(Dinghy NOT included)



12



13



14



(Dinghy NOT included)



17

16



18



19



20



21



22



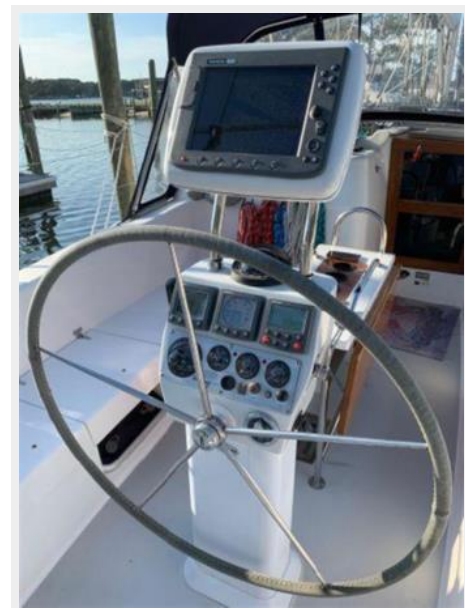
23



24



25





26



27



28



29



30



31



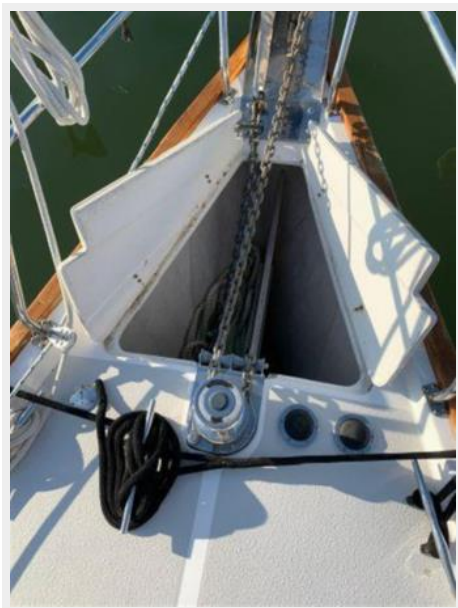
33



32



34



35



36



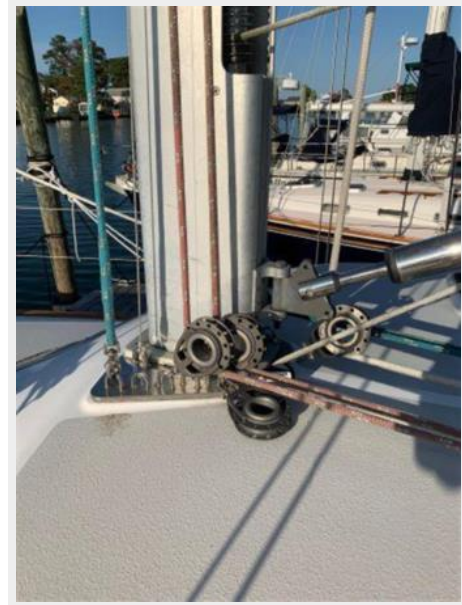
37



38



39



40



41



42



43



44



45



46



47



48



49



50



51



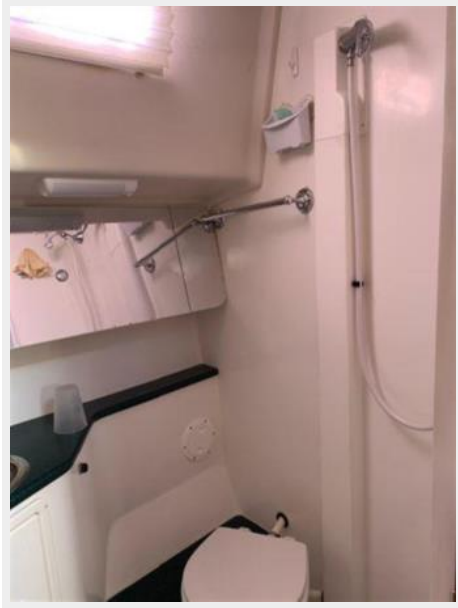
52



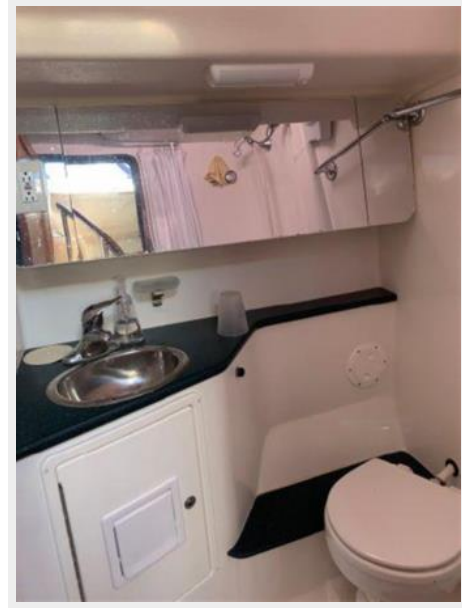
53



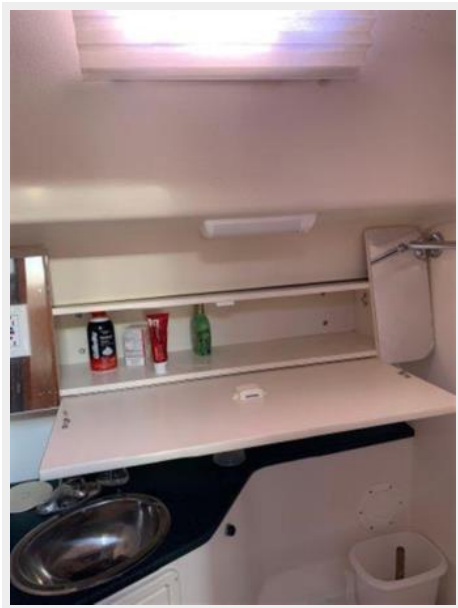
54



55



56



57





58



59



60



61



62



63



64



65



66



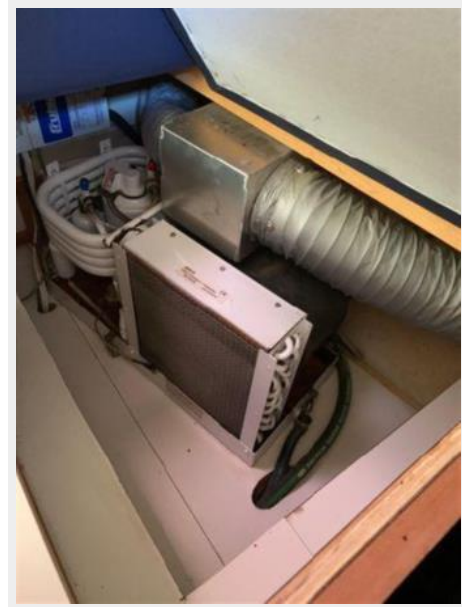
67



68



69



70



71



72



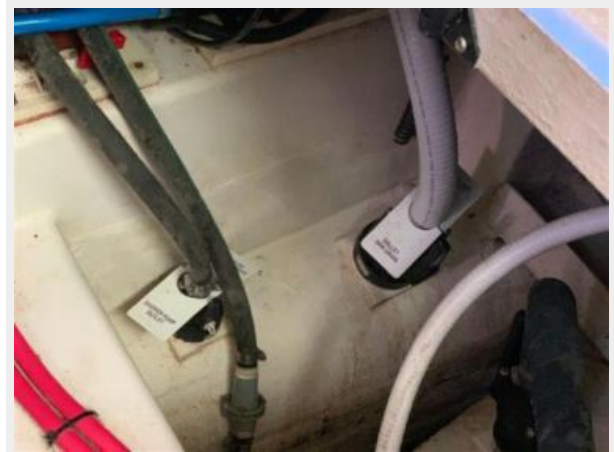
73



74



75



76



77



78



79



80



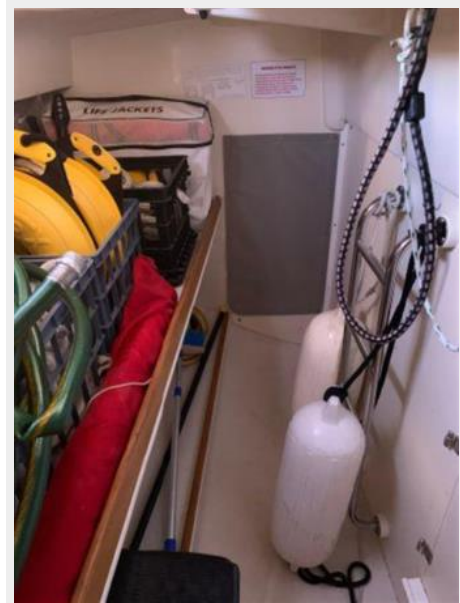
81



82



83



84



85



86



87



88



89



90



91



93



92





# КОНТАКТЫ

---

Андрей Шестаков (Andrey Shestakov) – ведущий яхтенный брокер отдела продаж яхт и судов компании Shestakov Yacht Sales Inc. Официальный представитель Shestakov Yacht Sales Inc. для русскоговорящих клиентов в центральном офисе компании в Майами/Форт Лодердейл/Флорида/США.

## Контактная информация

---

Email: [andrey@shestakovyachtsales.com](mailto:andrey@shestakovyachtsales.com)

Web: [shestakovyachtsales.com](http://shestakovyachtsales.com)

## Телефоны

---

Краснодарский край: **+7(918)465-66-44**

США, Майами, Флорида: **+1(954)274-4435**

## Время работы

---

Понедельник – Суббота: **9:00 - 21:00**  
EDT

Воскресенье: **Закрито**

## Адрес

---



Harbour Towne Marina, 850 NE 3rd St,  
STE 213, Dania, FL 33004