

## SIBONEY — ISLAND PACKET YACHTS



**Builder:** ISLAND PACKET YACHTS

**Year Built:** 2006

**Model:** Cruising Sailboat

**Price:** PRICE ON APPLICATION

**Location:** United States

**LOA:** 45' 9" (13.94m)

**Beam:** 14' 4" (4.37m)

**Min Draft:** 5' 0" (1.52m)

**Max Draft:** 5' 0" (1.52m)

Our experienced yacht broker, Andrey Shestakov, will help you choose and buy a yacht that best suits your needs **Siboney — ISLAND PACKET YACHTS** from our catalogue. Presently, at Shestakov Yacht Sales Inc., we have a wide variety of yachts available on our sale's list. We also work in close contact with all the big yacht manufacturers from all over the world.

If you would like to buy a yacht **Siboney — ISLAND PACKET YACHTS** or would like help answering any questions concerning purchasing, selling or chartering a yacht, please call **+1(954)274-4435**

# TABLE OF CONTENTS

TABLE OF CONTENTS	2
SPECIFICATIONS	4
Overview	4
Basic Information	4
Dimensions	4
Speed, Capacities and Weight	4
Accommodations	5
Hull and Deck Information	5
Engine Information	5
DETAILED INFORMATION	6
Overview	6
Exclusions	9
Disclaimer	9
PHOTOS	10
MAIN SALOON LOOKING FORWARD	10
MAIN SALOON STARBOARD SIDE	10
NAV AREA	10
NAV DETAIL	10
GALLEY	10
EFFICIENT FRIDGE FREEZER	10
MAIN SALOON PORT SIDE	11
OWNER'S SUITE FORWARD	11
OWNER'S SUITE TO STARBOARD	11
OWNER'S SUITE TO PORT	11
OWNER'S SUITE HEAD, LOOKING FORWARD	11
OWNER'S SUITE HEAD, LOOKING AFT	11
AFT HEAD	12
COMPANIONWAY AND AFT CABIN. HEAD	12

AFT CABIN	12
AFT HEAD FROM AFT CABIN	12
ENGINE ROOM FROM GALLEY	12
ENGINE ROOM UNDER COMPANIONWAY	12
HOUSE BATTERY BANK	13
MASPOWER 8KW GENSET	13
INVERTER	13
ISLAND PACKET STEP PLATES	13
FORWARD VIEW	13
FOREDECK AND WINDLASS	13
CHAIN LOCKER	14
LOOKING AFT AT DECK	14
SOLAR PANELS ON BIMINI	14
DODGER/COMPANIONWAY COVERS	14
DINGHY	14
STERN VIEW	14
SIBONEY	15
HELM SEAT	15
SIBONEY'S CUTTER RIG	15
CHART PLOTTER	15
SIBONEY APPROACHES THE SUNSHINE SKYWAY BRIDGE	16
SIBONEY UNDERWAY	16
CONTACTS	17
Contact details	17
Telephones	17
Office hours	17
Address	17

---

# SPECIFICATIONS

---

## Overview

---

TURNKEY - LOW HOURS - WELL EQUIPPED & RIGIDLY MAINTAINED SIBONEY is on just her third owner and all three have maintained this yacht particularly well. With loads of great cruising equipment already on board, with a few tweaks, you'll be able to sail anywhere. The owner has just lowered their price and is looking for a quick sale. The Island Packet 440 model replaced the very popular IP420 with several improvements to make it even better. A bigger and faster version of the 420, the IP440 has a larger swim platform, solid teak and oak cabin soles, solid acrylic countertops throughout, a forward facing nav station, larger fuel, water and holding tanks, and better performance with a longer waterline and more sail area. Come see this beauty now and take advantage of the new lower pricing!

## Basic Information

---

**Category:** Cruising Sailboat

**Model Year:** 2006

**Year Built:** 2006

**Country:** United States

## Dimensions

---

**LOA:** 45' 9" (13.94m)

**LWL:** 38' 1" (11.61m)

**Beam:** 14' 4" (4.37m)

**Min Draft:** 5' 0" (1.52m)

**Max Draft:** 5' 0" (1.52m)

**Clearance:** 62' 0" (18.90m)

**MFG Length:** 44' 0" (13.41m)

## Speed, Capacities and Weight

---

**Displacement:** 32000 Pounds

**Water Capacity:** 260 Gallons

**Holding Tank:** 55 Gallons

**Fuel Capacity:** 160 Gallons

---

## Accommodations

---

**Total Cabins:** 3

**Total Heads:** 2

---

## Hull and Deck Information

---

**Hull Material:** Fiberglass

**Hull Designer:** Traditional Watercraft, Inc.

**Exterior Designer:** Bob Johnson, N.A.

---

## Engine Information

---

**Engines:** 1

**Manufacturer:** Yanmar

**Model:** 4 Cylinder Turbo

**Engine Type:** Inboard

**Fuel Type:** Diesel

---

# DETAILED INFORMATION

---

## Overview

---

### Accommodations & Walkthru

The Island Packet 440 is an updated and tweaked 420 with a still further improved floor plan, more elbow room, larger cockpit and swim platform. She is luxurious, comfortable and sea-kindly. The Saloon features facing settees that have storage below and behind as well as a combination of cabinets and shelves above. The Starboard side settee converts to a full berth and the port side is long enough for entertaining and napping. The cleverly designed IP dining table stores up against the bulkhead when not in use converting from a dining area to a great living/entertaining area. A large cedar-lined hanging locker is forward to port. A flat-screen TV with cable connections is located on the forward bulkhead to starboard. The Saloon is also well ventilated by a large opening hatch, 4 opening ports and two dorades. All have screens and shades. A Weems and Plath clock and barometer are mounted on the main bulkhead to port. The starboard Nav Station is forward facing and its large desk with inlaid Island Packet logo has a storage tray underneath the lid. The whole desk hinges up and away for maintenance to the genset, located under the large nav seat, comfortable enough for two people to discuss their next destination. The 110V and 12V Electric Panel is outboard from the Nav Desk with a repeater, VHF radios and stereo all within easy reach. Aft is the large "U" shaped Galley with generous counter space and storage for any food prep job. With solid acrylic countertops, Force 10 3-burner stove/oven, microwave (new 2019), top loading refrigerator and freezer, pull-out trash bin and drawers and bins for dinnerware and cutlery. Two (2) 12v fans, an overhead hatch and an opening port provide plenty of ventilation for the chef(s). The Owner's Stateroom is forward with an Ensuite Head at the bow. The Head has a separate walk-in shower with a bifold glass door, solid acrylic countertop and sink and features a Vacu-Flush electric commode. Storage abounds with a large cabinet under the counter and a beautiful mirrored teak medicine cabinet above, plus two deep drawers across from the commode. An opening port, 12v fan and overhead hatch make the area light and airy. The Owner's Berth is on the starboard side and is cleverly angled to allow easy access on either side without waking your significant other. (Really nice!!) The hinged foot of the berth rises for linen storage and there is a drawer by the head entry utilizing every available inch of space. On the port side of the cabin's entry is a large cedar-lined hanging locker and a dressing seat and on Starboard is another cabinet for still more personal gear. A large, flat-screen TV is on the aft bulkhead. Three opening hatches, 4 opening ports and lots of ceiling and reading lights (all with shades and screens) plus a 12V fan and a Dorade vent keep this area comfortable no matter what the weather. The Aft Day/Guest Head is across on port and also features a VacuFlush commode, sink and separate shower area. It has an entry from the saloon and another from the aft cabin. There is plenty of ventilation from an overhead hatch, opening port and 12v fan. There is a nice teak mirror and tumbler/cup holder. You enter the Guest Cabin

just aft of the Head from the main saloon. A hanging locker and bureau storage are just inside with plenty of floor space for dressing. The berth also has linen storage under. Two (2) opening ports and an overhead hatch, plus a 12v fan, together with overhead and cabinside reading lights make the cabin functional and comfortable. The Engine Compartment is under the companionway with access doors on either side and in front of the engine. You have total access to the drive train under the aft cabin's cushions.

- Ocean Air Shades & Screens for all Opening Hatches
- Peek a Boo Shades and Screens for all Opening Ports
- Hot/Cold Pressure Water including fresh-water Cockpit Shower
- 2-16,000 BTU Reverse Cycle Heat/Air Conditioners
- Ultraleather Cream-colored Saloon Upholstery
- VacuFlush Commodes in both Heads
- Custom Mattress toppers in Owner's Stateroom

## Electrical Systems

The Island Packet 440 has both a 110V Shorepower System with two 30 amp inlets (and a 50 amp splitter) and a large 12V Ship's System complemented by a genset and a high output alternator.

- 8KW MasPower Generator (575 hours)
- Balmar 100 Amp High Output Alternator w/Voltage Regulator
- Charles 5000 Series 60 Amp Battery Charger
- 5- West Marine AGM 100 amp hour house bank
- Dedicated engine and genset start batteries
- Xantrex 1800 Watt Inverter (new 2017)
- Xantrex Battery Monitor
- 2 - 50' 30-amp Shorepower Cords w/50 amp splitter
- 12v outlet in nav station

## Electronics and Navigation Equipment

- Raymarine Quantum Radar, mounted on cockpit arch w/self leveling mount (new Oct 2017)
- Raymarine Axiom 125 Chartplotter with radar and AID overlays at helm pod; RS150 GNSS receiver (new Oct 2017)
- Raymarine i70s display heads: three in pod over companionway( set up as Speed, Depth & Wind) plus one at nav station set up as a repeater (new Oct 2017)
- Raymarine Evolution Autopilot w/p70 Controller in cockpit (new Oct 2017)
- Standard Horizon Quantum GY550S VHF Radio w/AIS & DSC; includes RAM3+ mic in cockpit (new Oct 2017?)
- Standard Horizon Eclipse VHF radio at nav station

- Fusion MS-RA70 radio with 4 speakers; Sirius XM SR150 receiver
- Ritchie SP-5 Compass at Helm

## Sails and Rigging

The Island Packet 440 is Cutter Rigged with a Hoyt Self Tacking Staysail Boom. She is mast head rigged with a double spreader, in-mast furling, Charleston Spar Rig w/Harken Furling on Staysail and Genoa. "SIBONEY" has a powerful rig with 1131 sq ft of sail area that is infinitely reefable with furling genoa, staysail and in-mast main.

- UK Sailmakers main; Quantum 130% genoa, Quantum staysail
- Cruising aysm chute w/Halyard & Deck Hardware
- Lewmar 2-Speed ST Primaries
- 2 - Lewmar 2-Speed ST Halyard Winches on Mast
- Lewmar 2 Speed ST Mainsail Winch on Coach Roof
- Lewmar 2 Speed ST Staysail Sheet Winch on Coach Roof
- Spare Main Halyard

## Engine & Mechanical

- Yanmar 75HP diesel engine w/PYI dripless packing gland and fixed three-blade prop. Racor fuel filter; 1600 hours at time of listing
- Remote start for main engine
- Balmar 100 amp alternator w/Duo Charge controller
- Maspower 8kW genset w/ Racor fuel filter; 575 hours at time of listing
- VacuFlush Heads (2) with fiberglass holding tank
- Holding tank empties by deck pump out or overboard via a "Y" valve and macerator pump
- Electric Bilge Pump
- Mechanical Bilge Pump
- Two separate shower pans with sump pumps

## Deck Details and Equipment

Island Packets have solid glass hulls with synthetically cored decks. There is a water-tight bulkhead between the Anchor Locker and Forward Head. She has a Spade Rudder that combined with the Full-Foil Keel, allows the 440 to track phenomenally well and yet is very maneuverable in tight marina places. The Bow Sprit/Platform is integral to the hull. The molded sugar scoop swim platform is large with steps from the cockpit on port and starboard. She is a very solid yacht.



- Lighthouse 1501 horizontal windlass with deck controls
- CQR 45# anchor w/Chain & 3 Strand Nylon Rode
- Bruce 66# Anchor with all Chain Rode
- Deck Salt Water Washdown w/Quick Connect Hose
- Dodger w/Aft & Side Handrails (new 2018)
- Bimini & Connecting Panel (new 2018)
- Side sun shades for bimini (new 2018)
- 2" Cockpit Closed Cell cushions w/toast Textalene covers
- Custom helm seat cushion with backrest
- Custom Teak Cockpit Table with Drop Down Leaves
- Café-style companionway doors with screens & plexiglass panels
- Leather Wheel Cover
- Stainless Steel Dorades vents with SS Guards
- Lifesling Man Overboard System on Stern Rail
- Hot/Cold Fresh Water Cockpit Shower
- Kato Dinghy Arch w/ radar, VHF, wind generator and solar panels mounted. Dinghy and outboard dinghy lift integrated into arch
- Foredeck sun shield w/supports
- AB dinghy w/Torquedo electric outboard; two batteries and charger
- Magma LPG grill on rail
- Valise pack life raft
- EPIRB (battery not current)

## Exclusions

---

Owner's personal belongings.

## Disclaimer

---

The Company offers the details of this vessel or yacht in good faith but cannot guarantee or warrant the accuracy of this information nor warrant the condition of the vessel. A buyer should instruct his representatives, agents, or his surveyors, to investigate such details as the buyer desires validated. This vessel or yacht is offered subject to prior sale, price change, or withdrawal without notice.

# PHOTOS

**MAIN SALOON LOOKING FORWARD**



**MAIN SALOON STARBOARD SIDE**



**NAV AREA**



**NAV DETAIL**



**GALLEY**



**EFFICIENT FRIDGE FREEZER**



**MAIN SALOON PORT SIDE**



**OWNER'S SUITE FORWARD**



**OWNER'S SUITE TO STARBOARD**



**OWNER'S SUITE TO PORT**



**OWNER'S SUITE HEAD, LOOKING FORWARD**



**OWNER'S SUITE HEAD, LOOKING AFT**



### AFT HEAD

### COMPANIONWAY AND AFT CABIN. HEAD



### AFT CABIN

### AFT HEAD FROM AFT CABIN



### ENGINE ROOM FROM GALLEY

### ENGINE ROOM UNDER COMPANIONWAY



**HOUSE BATTERY BANK**



**MASPOWER 8KW GENSET**



**INVERTER**



**ISLAND PACKET STEP PLATES**



**FORWARD VIEW**



**FOREDECK AND WINDLASS**



**CHAIN LOCKER**



**LOOKING AFT AT DECK**



**SOLAR PANELS ON BIMINI**



**DODGER/COMPANIONWAY COVERS**



**DINGHY**



**STERN VIEW**



## SIBONEY

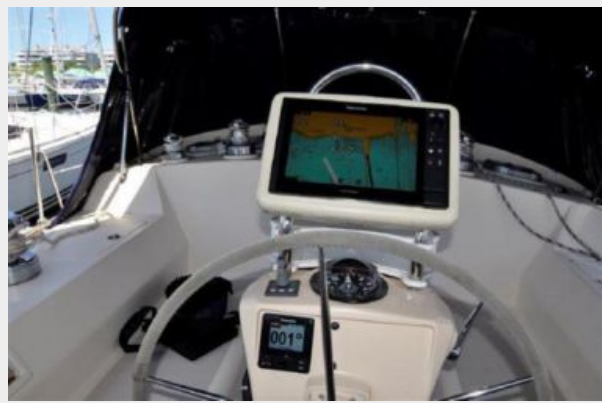


## HELM SEAT



## SIBONEY'S CUTTER RIG

## CHART PLOTTER



### SIBONEY UNDERWAY



### SIBONEY APPROACHES THE SUNSHINE SKYWAY BRIDGE





---

# CONTACTS

---

Andrey Shestakov, leading yacht broker of the sales department of Shestakov Yacht Sales Inc. Shestakov Yacht Sales Inc., the official representative of the Miami/Fort Lauderdale FL headquarters.

---

## Contact details

---

Email: [andrey@shestakovyachtsales.com](mailto:andrey@shestakovyachtsales.com)

Web: [shestakovyachtsales.com/en/](http://shestakovyachtsales.com/en/)

---

## Telephones

---

USA: +1(954)274-4435

---

## Office hours

---

Monday – Saturday: **9:00 - 21:00** EDT

Sunday: **closed**

---

## Address

---



Harbour Towne Marina, 850 NE 3rd St,  
STE 213, Dania, FL 33004