

WANDRIN' STAR — C & C YACHTS



Builder: C & C Yachts

Year Built: 1983

Model: Cruising/Racing Sailboat

Price: PRICE ON APPLICATION

Location: United States

LOA: 43' 0" (13.11m)

Beam: 12' 8" (3.86m)

Max Draft: 5' 6" (1.68m)

Our experienced yacht broker, Andrey Shestakov, will help you choose and buy a yacht that best suits your needs **Wandrin' Star — C & C Yachts** from our catalogue. Presently, at Shestakov Yacht Sales Inc., we have a wide variety of yachts available on our sale's list. We also work in close contact with all the big yacht manufacturers from all over the world.

If you would like to buy a yacht **Wandrin' Star — C & C Yachts** or would like help answering any questions concerning purchasing, selling or chartering a yacht, please call **+1(954)274-4435**

TABLE OF CONTENTS

TABLE OF CONTENTS	2
SPECIFICATIONS	4
Overview	4
Basic Information	4
Dimensions	4
Speed, Capacities and Weight	4
Accommodations	4
Hull and Deck Information	5
Engine Information	5
DETAILED INFORMATION	6
Overview	6
Exclusions	8
Disclaimer	8
PHOTOS	9
Aft Cabin Port Side	9
Large & Comfy Aft Cabin Starboard	9
U Shaped Saloon Convertible Table/Berth	9
Large U Shaped Galley	9
Nav Station & Electric Panel	10
Saloon Looking Forward	10
Saloon Looking Aft to Companionway	10
Looking at Starboard Side of Saloon	10
Forward Cabin Island Berth	10
Forward Head	10
Looking Forward from Aft Cabin	11
Custom Davits w/Outboard Crane	11
Magma BBQ Grill	11
New SS Ports Throughout	12

Foredeck with Liferaft	12
Bow & Foredeck	12
Canvas Full Enclosure	12
CONTACTS	13
Contact details	13
Telephones	13
Office hours	13
Address	13

SPECIFICATIONS

Overview

The C&C Landfall 43 is a unique cruiser with her sharp lines, rod rigging and big sailing area. She has the amenities of a comfortable cruiser but without sacrificing performance. As a Center Cockpit she has plenty of privacy and mid-ship cockpit makes it easy to move about the deck and provides excellent vision. With her abundant storage and elbow room, Wandrin' Star makes a great liveaboard. If you are looking for a do-everything yacht under \$100g, you owe it to yourself to see Wandrin' Star.

Basic Information

Category: Cruising/Racing Sailboat

Model Year: 1983

Year Built: 1983

Country: United States

Dimensions

LOA: 43' 0" (13.11m)

LWL: 34' 5" (10.49m)

Beam: 12' 8" (3.86m)

Max Draft: 5' 6" (1.68m)

Clearance: 55' 4" (16.87m)

MFG Length: 43' 0" (13.11m)

Speed, Capacities and Weight

Displacement: 24600 Pounds

Accommodations

Total Cabins: 2

Total Heads: 1

Hull and Deck Information

Hull Material: Fiberglass

Engine Information

Engines: 1

Manufacturer: westerbeke

Engine Type: Inboard

Fuel Type: Diesel

DETAILED INFORMATION

Overview

Walkthru & Accommodations

We begin at the bow with a very large and comfy Vee Berth with a private entrance to the Head on port and across the entry is a large hanging locker and cabinet. Shelves along both hull sides in addition to two drawers under berth give guests plenty of storage. There is good light and ventilation with a large and smaller opening hatch and a single opening port. This is a very nice Vee Berth. The port side forward head has a commode, sink and pullout shower. Besides the Vee berth entry, there is one to the Saloon as well. More well-designed ventilation with an opening hatch and port. The Saloon follows aft with a "U" shaped dining area with a convertible settee/berth to port while the facing settee on starboard is long enough for adult napping. There are shelves and cabinets along both port and starboard hull sides. Ventilation is great with 3 large opening hatches and 2 opening ports. The Galley follows aft on port that features a Contoure Convection Grill Microwave, a Force 10 2-burner Stove/Oven, double sinks and a gorgeous pullout, over/under Vitrifridge Refrigeration/freezer. There is plenty of counter space. Across on starboard, is the Nav Station with a great desk and a pull out seat. The Electrical Panel and Navigation Instruments are all within easy reach. Running on starboard aft of the Nav Station is the Passageway to the aft Owner's Stateroom. There is a large Hanging Locker, storage cabinets and a large engine access panel. There is a fixed port toward the cockpit for additional light and an opening port on the hull side. The Owner's Stateroom has a very large Queen Berth and an ensuite Head. as well as plenty of storage including a large Hanging Locker. at the entrance. There are 6 ports and an opening hatch (all opening) for fantastic ventilation and light. The Aft Head has a separate Shower Stall. The centerline Companionway has 6 steps up to the Cockpit which is large enough for sailing, entertaining and napping and is protected by a bimini with full enclosure. The C&C Landfall is a very comfortable cruiser with a good turn of speed.

- Hot/Cold Pressure Water
- AC/Heat Pump
- Memory Foam Mattresses in Vee and Aft Cabins
- New Saloon Cushion Foam and Covers
- New Force 10 2-Burner Stove and Oven
- New Contoure Convection Microwave
- New Vitrifigio Refrigerator and Separate Freezer Front Loading Drawers

Electrical

The C&C 43 Landfall has both a 12 Volt Ship and a 120 Volt Shorepower systems. The Ship's System has 2 banks of batteries: an Engine Start and a House side

- 50' Shorepower Cable
- Batteries: 4 House 6V Golf Cart Interstate Deep Cycle & 2 Engine Start 12V Marine Batteries
- Heart Freedom 10 Inverter/Charger
- Westerbeke 8KW Generator with 3000 hours
- New generator thruhull, strainer & seawater pump '16
- Lights under Galley

Navigation and Electronics

- Compass at Binnacle
- Davis Windex at Masthead
- Garmin Knotmeter, Depthsounder
- Garmin Chartplotter/GPS
- Clock and Barometer
- Garmin VHF Radio

Sails & Rigging

The C&C Landfall 43 is a Mast Head, Double Spreader Sloop Rig with SS Rod Rigging.

- Hood Full Battened Mainsail with 2 Reef Points
- Lewmar ST Mainsail Electric Winch
- Lazy Jacks 2015
- Deck Mounted Traveller w/Lines led aft
- New Hyde 135% Genna '16
- New Schaeffer Headsail Furling System

Hull and Deck plus Related Equipment

The Landfall 43 has a Solid Glass Hull

- Maxwell Electric Windlass
- Anchors with Chain and 3-Strand Nylon Rode
- Anchor Davit
- Electric Anchor Windlass
- Full Cockpit Enclosure with newer Eisenglass
- New Lifeline

- Deck Painted with Non-Skid
- Custom Built Arch with Dinghy Davits & Outboard Crane (Set up for Solar Panels)
- Custom Closed Cell Seat Cushions
- All new SS New Found Metals Opening Ports
- Replaced Fixed Ports

Mechanicals

The Landfall 43 has a Fresh Water Cooled, 4-Cylinder, 58HP Westerbeke Diesel with 3,250 Hours.

- New Seacocks & Strainers for Generator, Engine, Galley Sink Drain and AC/Heat Pump
- Engine Wiring Harness '16
- Instrument Panel '16
- Velvet Drive Transmission 2014
- New Manual Toilets Installed in Forward and Aft Heads
- New Waste System Valve
- Installed Access Port for Thru Hulls

Exclusions

Owner's personal belongings.

Disclaimer

The Company offers the details of this vessel or yacht in good faith but cannot guarantee or warrant the accuracy of this information nor warrant the condition of the vessel. A buyer should instruct his representatives, agents, or his surveyors, to investigate such details as the buyer desires validated. This vessel or yacht is offered subject to prior sale, price change, or withdrawal without notice.

PHOTOS

Aft Cabin Port Side



Large & Comfy Aft Cabin Starboard



U Shaped Saloon Convertible Table/Berth



Large U Shaped Galley



Nav Station & Electric Panel



Saloon Looking Forward



Saloon Looking Aft to Companionway



Looking at Starboard Side of Saloon



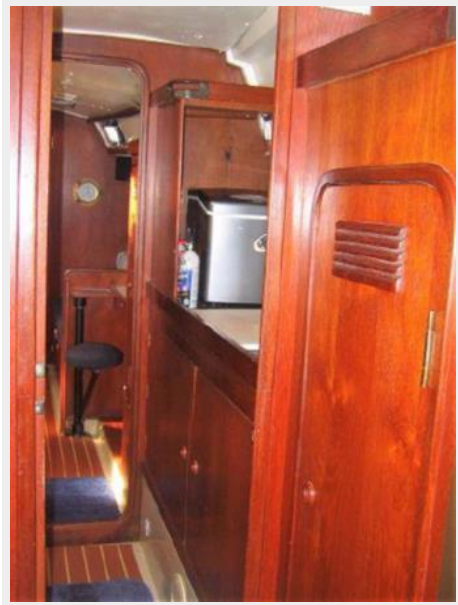
Forward Cabin Island Berth



Forward Head



Looking Forward from Aft Cabin



Custom Davits w/Outboard Crane

Magma BBQ Grill



New SS Ports Throughout



Foredeck with Liferaft



Bow & Foredeck



Canvas Full Enclosure



CONTACTS

Andrey Shestakov, leading yacht broker of the sales department of Shestakov Yacht Sales Inc. Shestakov Yacht Sales Inc., the official representative of the Miami/Fort Lauderdale FL headquarters.

Contact details

Email: andrey@shestakovyachtsales.com

Web: shestakovyachtsales.com/en/

Telephones

USA: +1(954)274-4435

Office hours

Monday – Saturday: **9:00 - 21:00** EDT

Sunday: **closed**

Address



Harbour Towne Marina, 850 NE 3rd St,
STE 213, Dania, FL 33004