

DISCOVERY — ISLAND PACKET YACHTS



Builder: ISLAND PACKET YACHTS

LOA: 44' 7" (13.59m)

Year Built: 2001

Beam: 14' 3" (4.34m)

Model: Cruising Sailboat

Max Draft: 5' 0" (1.52m)

Price: PRICE ON APPLICATION

Location: United States

Our experienced yacht broker, Andrey Shestakov, will help you choose and buy a yacht that best suits your needs **Discovery — ISLAND PACKET YACHTS** from our catalogue. Presently, at **Shestakov Yacht Sales Inc.**, we have a wide variety of yachts available on our sale's list. We also work in close contact with all the big yacht manufacturers from all over the world.

If you would like to buy a yacht **Discovery — ISLAND PACKET YACHTS** or would like help answering any questions concerning purchasing, selling or chartering a yacht, please call **+1(954)274-4435**

TABLE OF CONTENTS

TABLE OF CONTENTS	2
SPECIFICATIONS	5
Overview	5
Basic Information	5
Dimensions	5
Speed, Capacities and Weight	5
Accommodations	6
Hull and Deck Information	6
Engine Information	6
DETAILED INFORMATION	7
Overview	7
Exclusions	12
Disclaimer	12
PHOTOS	13
DISCOVERY dockside	13
DISCOVERY under sail	13
DISCOVERY transom	13
DISCOVERY	13
DISCOVERY	13
sidedecks and teak cap rails	13
Roller furling mast	14
deck	14
Lighthouse Windlass	14
Helm Seat	14
helm	15
new B&G 12" Zeus Chartplotter	15
new B&G Triton displays and autopilot control	15
IP420 accommodation plan	15

Main saloon looking forward	15
galley	15
icebox with divider and plate freezer units and spillover fan	16
Looking aft, galley, nav and saloon	16
nav station	16
SSB and VHF radios	16
AC and DC control panels	16
starboard settee	16
Owner's suite looking forward	17
Owner's suite looking aft	17
ensuite owner's head with shower stall	17
owner's head	17
owner's cabin dressing seat and storage	17
port settee	17
aft head	18
fold down shower seat in aft head	18
aft cabin - looking aft	18
aft cabin - looking inboard	18
aft cabin - looking forward at lockers and storage	18
Four 100 amp/hour gel cells for the house	18
Yanmar engine w/3,000 hours	19
engine, port side view	19
One of three AC units	19
ProSine Inverter	19
Clean bilges	19
CONTACTS	20
Contact details	20
Telephones	20
Office hours	20

Address

20

SPECIFICATIONS

Overview

DISCOVERY is a beautiful, one-owner example of the Island Packet 420, and has been dramatically refitted over the past three years: new sails, new electronics suite including chart plotter, radar, and autopilot, new electrical package including batteries, alternator /regulator, and genset, plus has had the exterior teak professionally done. This stunning, dark green IP420 has been loved and well cared for but the owners no longer have time to fully enjoy her. Take advantage of this opportunity to become just the second owner of this popular Island Packet model.

Basic Information

Category: Cruising Sailboat	Model Year: 2001
Year Built: 2001	Country: United States

Dimensions

LOA: 44' 7" (13.59m)	LWL: 37' 4" (11.38m)
LOD: 42' 0" (12.80m)	Beam: 14' 3" (4.34m)
Max Draft: 5' 0" (1.52m)	Clearance: 58' 10" (17.93m)
MFG Length: 42' 0" (12.80m)	

Speed, Capacities and Weight

Displacement: 30000 Pounds	Water Capacity: 250 Gallons
Holding Tank: 60 Gallons	Fuel Capacity: 160 Gallons

Accommodations

Total Cabins: 3

Total Berths: 4

Total Heads: 2

Hull and Deck Information

Hull Material: Fiberglass

Hull Finish: Aluminum

Hull Designer: Island Packet Yachts

Exterior Designer: Bob Johnson

Engine Information

Engines: 1

Manufacturer: Yanmar

Model: 4JH3-TE

Engine Type: Inboard

Fuel Type: Diesel

DETAILED INFORMATION

Overview

VESSEL WALKTHROUGH Island Packet Yachts have long been noted for their exceptionally livable designs. There is an abundant amount of interior stowage available in the salon, as elsewhere in the yacht, due in large part to the generous tankage being centrally located below the cabin sole. This feature also keeps these considerable weights low and close to the center of the yacht to maximize stability and minimize trim changes. All sole surfaces in the galley, companionway, and navigation areas are molded in a slip-resistant diamond pattern for improved safety and ease of maintenance in these frequently used areas. Beautiful handcrafted and custom cabinetry and joinery work is found throughout the yacht. Comfortable, thick cushions with designer fabric on the bunks, with upgraded UltraLeather in the main saloon, well placed light fixtures and handrails, numerous opening ports, dorade deck vents and hatches, and a durable and easily maintained overhead and hull surfaces make the salon and the entire interior attractive, comfortable and practical.

MASTER STATEROOM: The owner's suite is forward and is a true delight with the entire beam of the yacht utilized for a grand and inviting retreat. There is a large island berth which is offset from the hull providing easy access from both sides. The aft section of the berth-top, mounted on gas support struts, lifts to reveal a large storage area ideal for those bulky items like blankets. Drawers, cabinets, storage bins and a deep hanging locker provide ample space for personal gear. A seat to port adds further convenience. Two overhead hatches, a dorade vent and several opening ports will keep this area bright and well ventilated. Overhead padeyes and hooks on the bulkhead provide convenient spots for hanging fishing poles and longer clothing items.

MASTER HEAD: Forward is a private ensuite head with a large separate stall shower. The shower area is fitted with a folding acrylic door and built-in seat. In the head there is a deep S/S sink with vanity, marine toilet, several lockers and drawers and excellent ventilation with an overhead hatch and opening portlights.

SALON: As you can see in the pictures, the salon is a warm and inviting area to lounge or entertain. With the custom upholstery, brass lamps and attention to detail you will want to spend a lot of time aboard. The hinged table is secured out of the way against the bulkhead. Behind this is a very nice bottle and glass rack. The table is easily lowered to make either a small or a large dining area. When the table is fully opened this also provides a great project area. If you wish to have additional friends or family stay aboard, the starboard settee pulls out to provide a double berth. Behind and under both settees are an immense amount of storage areas.

Aft to starboard of the salon is the nav area with an electrically powered swing-out seat and large hinged chart table. See "Nav" section below for more details. The galley is aft of the nav, immediately to the starboard side of the companionway. For more details on the galley see below.

AFT CABIN: Features a very large Pullman-style athwartship berth, a large cedar-lined hanging locker and a generous bureau with several compartments. Two opening ports and an overhead hatch bathe the area in natural light

and provide excellent ventilation. AFT HEAD: Entered from either the main salon or through a private door in the aft cabin, the aft head, with its folding teak shower seat, wraparound vanity, oval polished sink, teak framed mirror, and bulkhead mounted shower unit with a pull around curtain provide particularly nice facilities for guests and crew. Shower drains in both heads have an electric drain pump. ADDITIONAL FEATURES:

- Marine Air reverse cycle Heat/Air (10k, 9k and 7k BTU units) (The 9k unit was replaced in 2014 with a Dometic unit)
- New holding tank - original aluminum tank replaced with an Island Packet factory-built fiberglass tank, along with all new sanitation hoses - 2013
- New NextGen 5.5kW generator- 2018
- Glebe Creek screens on all hatches

GALLEY The galley is conveniently located at the base of the companionway on the starboard side. Ideal for the cruising sailor is its practical U-shaped design and its many features such as: generous counter space, cutlery drawers, pot and pan bin, large dry storage locker, and counter top cabinets, several deep storage drawers and a pull-out trash receptacle. There is also a well insulated divided refrigerator/freezer with lots of room for additional food for those longer trips. The slip resistant molded sole provides secure footing and easy maintenance - a great feature in the galley.

- Adler-Barbour holding plate freezer system with spillover fan for refrigeration compartment; Top loading, injected froth type insulation throughout, insulated divider, electric drain pump, inside light with manual switch, hinged, double gasketed lid w/support strut.
- Microwave Oven 110 volt
- Large wrap-around design w/sea rails on all edges
- Gimballed 3-burner Force 10 LPG stove w/oven -stainless steel deluxe safety type, sealed burner top, lift off cover w/storage rack below, stainless steel guard rail w/harness hooks.
- Double stainless steel sink with deluxe polished finish, hot & cold pressure water tap, manual pump, retractable spray unit
- Roll-away trash bin, teak paper towel holder, soap rack
- Deluxe teak dish rack & cutlery drawers
- Large storage areas above & below counter, storage drawer, cabinet, dry storage locker
- Cockpit instrument access cabinet

NAV & EQUIPMENT The nav area is just forward of the galley and has a full-size navigation table with a customized nav seat that swings out electronically. There is a storage tray under the hinged tabletop, a locker under, another locker outboard of the table, and a chart drawer under the settee immediately forward of the nav area. The master electrical distribution panels are recessed, yet still easily accessible.

- B&G Wi-Fi module (new 2017)
- Link Lite Battery Monitor (new 2017)
- ICOM VHF M424 w/remote mic at helm, masthead antenna (all new 2017)
- West Marine stereo with four speakers (new 2017)

- NOTE: SSB radio currently inoperative. Error message displayed on start-up

ENGINE & ELECTRICAL 75 hp Yanmar, turbo diesel, 4 cylinder, fresh water cooled engine. Racor fuel filter w/water separator is mounted on a door in the galley for easy access. Extensive sound control is achieved with lead-lined insulation and gasketed doors. Serviced annually (oil and coolant changed, fuel & oil filters replaced, impeller, hoses & belts inspected.)

- NextGen 5.5kw generator (New 2018)
- Side Power SP75T Bow Thruster w/Joystick at Helm (motor replaced 2013)
- (4) AGM Group 27 Lifeline House Batteries 12v/100 amp/hour, (New June 2017)
- (1) AGM Group 27 Lifeline Engine Start Battery 12v/100 amp/hour (New June 2017)
- StatPower Prosine 1800 watt inverter
- LinkLite battery monitor
- Charles Charger, 5000 series, 50 amp charger
- Balmar 100 amp Alternator and regulator (New 2017)

SAILS & RIGGING The Island Packet 420 has been created with a somewhat taller configuration to take advantage of her extra sail carrying ability and to enhance both light air and upwind performance. With the furling mainsail, cutter rig and sail controls lines aft - sailing has become easier and more enjoyable than ever. The contributions to performance and sail control from the Hoyt staysail boom would be hard to overstate. This simple device has "turbo-charged" the staysail's contribution to overall performance and makes the cutter rig better than ever. The 420 has excellent qualities for cruising under all points of sail in a wide variety of conditions with a very manageable and versatile rig.

- Charleston spars mast and boom with in-mast furling
- New mainsail and genoa from Knighton Sails - 2014
- Harken furlers for Genoa and Staysail
- Sail control lines aft to cockpit
- Cockpit storage bins for all sail control lines
- New lifelines - 2015

HULL, DECK & EQUIPMENT UNDERBODY The FULL foil keel continues as the foundation of the Island Packet concept, and its design and construction provide a host of advantages to the cruising sailor: a moderate draft for access to a wider range of cruising grounds, low ballast placement for increased stability, superior protection for rudder and propeller, integral one-piece construction for maximum strength, and a highly effective airfoil shape for windward performance.

DECK The 420 deck design offers all the key features long appreciated by Island Packet owners: a recessed foredeck with bulwarks for safety on deck, an anchor platform with two rollers for immediate access to both anchors, wide easy sidedecks for easy passage, full-length stainless steel cabin top handrails (no varnishing required), Dorade vents with SS guards, SS mast pulpits and high double lifelines with side and stern gates. **COCKPIT** The large cockpit is very comfortable with long contoured seats that accommodate a large crew or invite stretching out on the Textalene covered cockpit cushions. Features include a built-in insulated beverage locker, a folding table, two large seat lockers with interior lights, a separate helm seat with

backrest, always popular molded stern rail seats with bottom cushions, a central gate leading to a stern platform, a hand held personal shower, deep swim ladder with rubber treads, padeyes for safety harness attachments and large cockpit scupper drain capacity.

- B&G Zeus Chartplotter 12" (new 2017)
- B&G Triton Displays (two - with speed, depth and wind)
- B&G 4k Radar (new 2017)
- Todd Helm Seat with removable cushions for improved visibility and support
- Bottom freshly painted (Feb 2017), hull waxed, stainless polished and teak redone (Sept 2017)
- Side Power SP75T Bow Thruster (new motor 2013)
- Extra heavy-duty Lighthouse 1501 Electric Anchor Windlass w/foredeck and cockpit controls
- 60# CQR primary anchor w/150' 3/8" galvanized chain
- 44# Bruce anchor w/125' 3/8" chain
- Two spare halyards
- Deck washdown system
- Bimini & Dodger with connector
- LED anchor and steaming lights (new 2017)
- New lifelines (2015)
- NOTE: owner is keeping dinghy and outboard (outboard stern bracket and motor left to remain on boat)

DESIGNER COMMENT The new 420 defines the latest generation of Island Packet designs with virtually every aspect of this yacht representing a significant evolution from our earlier models in this size range. With ongoing advances in construction technology, equipment selection, manufacturing processes and quality control measures, this will be one of the most desirable and best built yachts Island Packet has ever offered. The 420 hull incorporates a host of new design elements that further improve a concept that I believe offers the best combination of seakeeping, safety, stability and speed available to the cruising sailor. New bow and stern configurations combine to increase boat speed through a longer sailing waterline and reduced resistance in waves, while refinements to the keel and rudder foil sections will benefit upwind performance, reduce drag and enhance steering. The hull continues to be molded as a one piece (integral hull and keel) solid tri-axial fiberglass structure, utilizing our pressure-fed resin impregnation system, PolyClad2 gel below the waterline and DuraShield gel on the topsides. I think no one in the marine industry, power or sail, is molding better fiberglass parts than Island Packet. The 420 deck design continues to offer all the key features long appreciated by Island Packet owners: recessed foredeck with bulwarks, anchor platform with two rollers (our exclusive SeaSafe patented design), full length stainless steel cabin top handrails, beautifully molded detail for hardware and a new and improved dodger/windshield mount, and Dorade vents now with stainless steel cowls and welded guards. The cockpit offers long, contoured seats with big lockers under push button latch seat hatches with gas support struts, an insulated beverage box and hand held shower, separate helm seat with backrest and premium rack and pinion pedestal mounted steering (with provision for auto pilot), molded stern rail seats and a central gate leading

to a stern platform. As always, sail control lines are lead aft making sail trim or changes convenient from the cockpit. Bins located at the forward end of both coamings have hinged tops and provide handy and neat storage for these lines. With the available option of a roller furling mainsail (now selected by the majority of our new owners), sailing has become easier and more enjoyable than ever. It's a real pleasure to be able to quickly set, trim or stow the sails without leaving the cockpit. While on the subject of the rig, the 420 has been created with a somewhat taller configuration to take advantage of the extra sail carrying ability of this design and to enhance both light air and upwind performance. I should also add that the contributions to performance and sail control from the Hoyt® staysail boom would be hard to overstate. This simple device has "turbo-charged" the staysail's contribution to overall performance and makes the cutter rig better than ever. I believe Island Packet is the only manufacturer to offer this cutter design configuration, and it is a very big plus for the cruising couple. The 420 should have excellent qualities for cruising under all points of sail in a wide variety of conditions with a very manageable and versatile rig. I think perhaps the most exciting aspect of the new 420 is the interior arrangement. The beam of over 14 feet and a lot of usable hull length have enabled me to create very spacious accommodations with all the amenities that I think our owners are looking for, along with lots of storage space and large tank capacities to meet the demands of extended cruising. This is going to be a great boat on which to spend a lot of time. The owner's quarters are located forward and include a private head compartment with stall shower. The stateroom introduces a new arrangement with a large double berth offset to starboard and angled away from the hull side to allow access from either side. The berth top is hinged and supported with gas struts and may be raised to access a generous storage bin underneath for blankets and the like. Additional drawers, bureaus, shelves, and a cedar lined hanging locker provide ample room for personal items. A dressing seat adds further convenience, and two deck hatches, a Dorade vent and several opening ports will keep this area bright and breezy, as are all other areas throughout the interior. The adjoining head has a sink vanity with cabinet space over and under, "captain's-chair" seating for the toilet, and built-in medicine chest and linen drawers. The shower includes a molded seat and folding textured acrylic door that stows flat against the bulkhead when not in use. Space (and access) has been provided for owner/dealer installation of a bow thruster under the shower seat area. European owners are more inclined to make this installation, but I think it may be just a matter of time until it becomes common in the USA. We've been praised in the press for having some of "the best heads afloat" and I think this one will further that reputation. The big forepeak is reached through a tall bulkhead door in the shower area. This area is unique in that it features our usual divided chain locker forward (prepared for windlass installation and chain control), plus a separate area immediately aft that will be handy for storage of items like fenders, extra anchors and rode, etc., when underway. The aft guest stateroom has a wide double berth, ample storage in a hanging locker and bureau, and private entrance to the aft head compartment. The aft head may also be accessed from the salon area, and includes a shower with curtained enclosure and folding seat over the toilet. The sink vanity has cabinet storage over and under and, as with the forward head, is finished in light colored Formica® laminates with varnished teak trim for an attractive, bright and practical finish. Shower drains in both heads have an electric drain pump discharging overboard, with sole drains configured to work at rest or under sail. The main salon is notable for its overall spaciousness. Once again I've incorporated our long popular arrangement of full length facing settees, with the

starboard L-shaped settee able to convert into a double with a pull-out extension. Our trademark folding dining table hinges from the bulkhead storage rack to provide for either a large serving/dining area or, when retracted, a completely open salon. Large storage areas are available under and behind both port and starboard settees, in cabinets outboard and above the settees and in a cedar lined hanging locker. Large capacity tanks for water, fuel and waste are located under the sole, keeping these considerable weights low and close to the center of the yacht to maximize stability, minimize trim changes and increase useful storage elsewhere. The full size navigation table with swing-out seat, adjacent to the main salon, should please the most ardent navigator, and includes recessed master electrical distribution panels with numerous spare breakers and ample panel space for dealer/owner installed electronics. A storage tray is provided under the hinged tabletop, with a locker under and outboard of the table and a chart drawer under the settee immediately forward of the nav area. The 420 galley combines the best features of all previous Island Packet models and is notable for its generous counter space, storage room and numerous convenience features. Our recently developed ice box installation with hinged and double gasketed push-button latch lid and super-insulated box is factory prepared for dealer/owner installation of refrigeration. There's plenty of room for block ice if preferred, or capacity for extra refrigerated storage on longer voyages. This installation was developed jointly with a professional refrigeration manufacturer and tested by an independent lab during its development. It has resulted in the best insulating qualities of any marine ice box design the lab has tested (and they've done quite a few). Seaward's recently introduced sealed-top LPG range is standard, along with a microwave oven (A/C operation only). Several deep storage drawers, a pull-out trash receptacle, dish rack with cutlery drawers, pot and pan bin, dry storage lockers and counter top cabinets should make one feel right at home. All sole surfaces in the galley, companionway and navigation areas are molded in a slip-resistant diamond pattern for improved safety and ease of maintenance in these frequently used areas. A teak grate in the sole covers a lift-out dust tray, access to the fuel and water tank fittings and the lighted bilge sump. In the twenty years since the founding of Island Packet Yachts, I am more excited than ever about the yachts we are creating. In many ways, the new 420 represents the best of everything that has earned Island Packet its position as America's Cruising Yacht Leader. Bob Johnson, N.A. President

Exclusions

Owner's personal belongings.

Disclaimer

The Company offers the details of this vessel or yacht in good faith but cannot guarantee or warrant the accuracy of this information nor warrant the condition of the vessel. A buyer should instruct his representatives, agents, or his surveyors, to investigate such details as the buyer desires validated. This vessel or yacht is offered subject to prior sale, price change, or withdrawal without notice.

PHOTOS

DISCOVERY under sail



DISCOVERY dockside



DISCOVERY transom



DISCOVERY



DISCOVERY



sidedecks and teak cap rails



deck



Roller furling mast



Lighthouse Windlass



Helm Seat



helm



new B&G 12" Zeus Chartplotter



new B&G Triton displays and autopilot control



IP420 accommodation plan



Main saloon looking forward



galley



**icebox with divider and plate freezer units
and spillover fan**



Looking aft, galley, nav and saloon



nav station



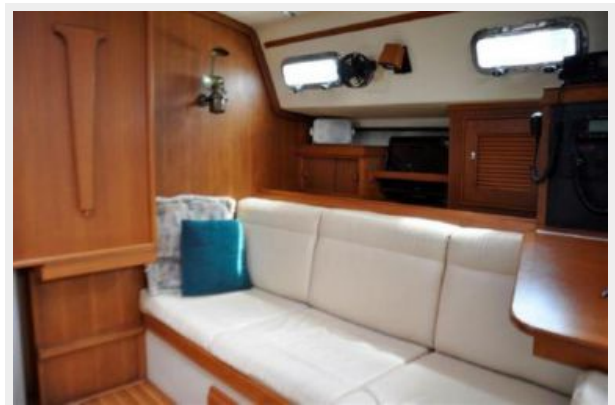
SSB and VHF radios



AC and DC control panels



starboard settee



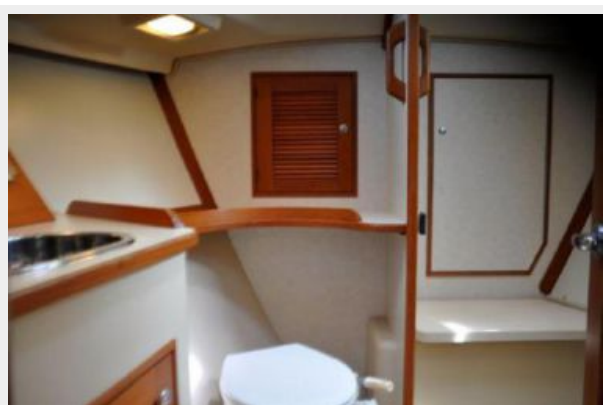
Owner's suite looking forward



Owner's suite looking aft



ensuite owner's head with shower stall



owner's head



owner's cabin dressing seat and storage



port settee



aft head



fold down shower seat in aft head



aft cabin - looking aft



aft cabin - looking inboard



aft cabin - looking forward at lockers and storage



Four 100 amp/hour gel cells for the house



Yanmar engine w/3,000 hours



engine, port side view



One of three AC units



ProSine Inverter



Clean bilges



CONTACTS

Andrey Shestakov, leading yacht broker of the sales department of Shestakov Yacht Sales Inc. Shestakov Yacht Sales Inc., the official representative of the Miami/Fort Lauderdale FL headquarters.

Contact details

Email:
andrey@shestakovyachtsales.com

Web: shestakovyachtsales.com/en/

Telephones

USA: **+1(954)274-4435**

Office hours

Monday – Saturday: **9:00 - 21:00 EDT**

Sunday: **closed**

Address



Harbour Towne Marina, 850 NE 3rd St,
STE 213, Dania, FL 33004