

## LONG GONE — MORGAN



**Builder:** MORGAN

**Year Built:** 1970

**Model:** Cruising/Racing Sailboat

**Price:** PRICE ON APPLICATION

**Location:** United States

**LOA:** 42' 0" (12.80m)

**Beam:** 11' 6" (3.51m)

**Max Draft:** 6' 5" (1.96m)

Our experienced yacht broker, Andrey Shestakov, will help you choose and buy a yacht that best suits your needs **Long Gone — MORGAN** from our catalogue. Presently, at Shestakov Yacht Sales Inc., we have a wide variety of yachts available on our sale's list. We also work in close contact with all the big yacht manufacturers from all over the world.

If you would like to buy a yacht **Long Gone — MORGAN** or would like help answering any questions concerning purchasing, selling or chartering a yacht, please call **+1(954)274-4435**

# TABLE OF CONTENTS

|                              |    |
|------------------------------|----|
| TABLE OF CONTENTS            | 2  |
| SPECIFICATIONS               | 4  |
| Overview                     | 4  |
| Basic Information            | 4  |
| Dimensions                   | 4  |
| Speed, Capacities and Weight | 4  |
| Accommodations               | 4  |
| Hull and Deck Information    | 5  |
| Engine Information           | 5  |
| DETAILED INFORMATION         | 6  |
| Overview                     | 6  |
| Exclusions                   | 6  |
| Disclaimer                   | 7  |
| PHOTOS                       | 8  |
| 2                            | 8  |
| 3                            | 8  |
| 4                            | 8  |
| 5                            | 8  |
| 6                            | 9  |
| 7                            | 9  |
| 8                            | 9  |
| 9                            | 9  |
| 10                           | 10 |
| 11                           | 10 |
| 12                           | 10 |
| 13                           | 10 |
| 15                           | 11 |
| 14                           | 11 |

---

|                 |    |
|-----------------|----|
| 16              | 11 |
| CONTACTS        | 12 |
| Contact details | 12 |
| Telephones      | 12 |
| Office hours    | 12 |
| Address         | 12 |

---

# SPECIFICATIONS

---

## Overview

---

Morgan Classic, Looking for a Proven race winner or just a cruiser. This is your yacht! "Long Gone" was refit in 2005 New Yanmar Diesel, Seldon Mast, Boom Furler & Vang. She is a basic yacht awaiting your personal touch. LONG GONE is one of Only (2) Morgan 42-MK1 built for SORC. The Prototype for the Morgan 42-MK2. With a PRHF rating of 126 Spinnaker and 167 Non. She is one great sailing yacht. Buy a piece of racing history

## Basic Information

---

**Category:** Cruising/Racing Sailboat

**Model Year:** 1970

**Year Built:** 1970

**Country:** United States

## Dimensions

---

**LOA:** 42' 0" (12.80m)

**LWL:** 30' 5" (9.27m)

**LOD:** 40' 0" (12.19m)

**Beam:** 11' 6" (3.51m)

**Max Draft:** 6' 5" (1.96m)

**MFG Length:** 42' 0" (12.80m)

## Speed, Capacities and Weight

---

**Displacement:** 19000 Pounds

**Water Capacity:** 70 Gallons

**Holding Tank:** 5 Gallons

**Fuel Capacity:** 30 Gallons

## Accommodations

---

**Total Cabins:** 1

**Total Berths:** 4

**Total Heads:** 1

---

## Hull and Deck Information

---

**Hull Material:** Fiberglass

---

## Engine Information

---

**Engines:** 1

**Manufacturer:** Yanmar

**Model:** 3JH4E

**Engine Type:** Inboard

**Fuel Type:** Diesel

---

# DETAILED INFORMATION

---

## Overview

---

### Electronics

- Depthsounder
- Log-speedometer
- Wind speed and direction
- Plotter
- Autopilot
- Compass
- VHF

### Sails

- Fully battened mainsail
- Genoa
- Furling genoa

### Rigging

- Steering wheel
- Spinnaker pole

### Inside Equipment

- Oven
- Marine head

### Outside Equipment/Extras

- Cockpit cushions

### Covers

- Bimini Top

---

## Exclusions

---

Owner's personal belongings.

---

## Disclaimer

---

The Company offers the details of this vessel or yacht in good faith but cannot guarantee or warrant the accuracy of this information nor warrant the condition of the vessel. A buyer should instruct his representatives, agents, or his surveyors, to investigate such details as the buyer desires validated. This vessel or yacht is offered subject to prior sale, price change, or withdrawal without notice.

# PHOTOS

2



3



4



5





6



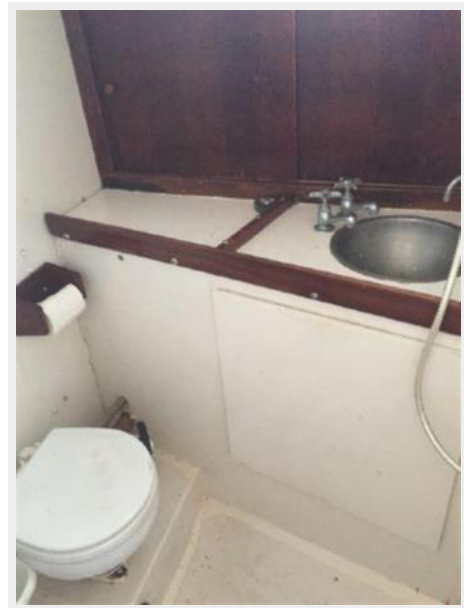
7



8



9



10



11



12



13



14



15



16



# CONTACTS

---

Andrey Shestakov, leading yacht broker of the sales department of Shestakov Yacht Sales Inc. Shestakov Yacht Sales Inc., the official representative of the Miami/Fort Lauderdale FL headquarters.

## Contact details

---

Email: [andrey@shestakovyachtsales.com](mailto:andrey@shestakovyachtsales.com)

Web: [shestakovyachtsales.com/en/](http://shestakovyachtsales.com/en/)

## Telephones

---

USA: +1(954)274-4435

## Office hours

---

Monday – Saturday: **9:00 - 21:00** EDT

Sunday: **closed**

## Address

---



Harbour Towne Marina, 850 NE 3rd St,  
STE 213, Dania, FL 33004