

SECOND WIND — ISLAND PACKET YACHTS



Builder: ISLAND PACKET YACHTS

Year Built: 2007

Model: Cruising Sailboat

Price: PRICE ON APPLICATION

Location: United States

LOA: 41' 8" (12.70m)

Beam: 12' 8" (3.86m)

Max Draft: 3' 8" (1.12m)

Our experienced yacht broker, Andrey Shestakov, will help you choose and buy a yacht that best suits your needs **Second Wind — ISLAND PACKET YACHTS** from our catalogue. Presently, at Shestakov Yacht Sales Inc., we have a wide variety of yachts available on our sale's list. We also work in close contact with all the big yacht manufacturers from all over the world.

If you would like to buy a yacht **Second Wind — ISLAND PACKET YACHTS** or would like help answering any questions concerning purchasing, selling or chartering a yacht, please call **+1(954)274-4435**

TABLE OF CONTENTS

| | |
|------------------------------|----|
| TABLE OF CONTENTS | 2 |
| SPECIFICATIONS | 5 |
| Overview | 5 |
| Basic Information | 5 |
| Dimensions | 6 |
| Speed, Capacities and Weight | 6 |
| Accommodations | 6 |
| Hull and Deck Information | 6 |
| Engine Information | 6 |
| DETAILED INFORMATION | 7 |
| Overview | 7 |
| Exclusions | 11 |
| Disclaimer | 11 |
| PHOTOS | 12 |
| Second Wind | 12 |
| Second Wind | 13 |
| Deck | 13 |
| Bow Pulpit and Boom | 13 |
| Bow Pulpit | 13 |
| Helm | 13 |
| Helm | 13 |
| Helm | 14 |
| Helm | 14 |
| Cabinetry | 14 |
| Cabinetry and Sole | 14 |
| Refrigeration, Freezer | 14 |
| Refrigeration, Freezer | 14 |
| Oven and Stove | 15 |

| | |
|----------------------------------|----|
| Refrigeration | 15 |
| Companionway | 15 |
| Control Panel | 15 |
| Nav Station | 15 |
| Settee and Dinette | 15 |
| Settee and Dinette Deployed | 16 |
| Helm | 16 |
| Helm | 16 |
| Helm | 16 |
| Electronics | 16 |
| Panel | 16 |
| Panel | 17 |
| Companionway | 17 |
| Engine Access Under Companionway | 17 |
| Control Panel | 17 |
| Storage | 17 |
| Galley | 17 |
| Galley | 18 |
| Refrigeration | 18 |
| Refrigeration | 18 |
| SS Double Sink | 18 |
| Chart Table | 18 |
| Chart Table | 18 |
| Aft Cabin | 19 |
| Aft Cabin Cabinetry | 19 |
| Head | 19 |
| Shower | 19 |
| Owner's Cabin | 19 |
| Owner's Cabin | 19 |

| | |
|----------------------------|-----------|
| Owner's Cabin | 20 |
| Cockpit and controls | 20 |
| Bow Pulpit | 20 |
| Deck Looking Aft | 20 |
| Forward Cockpit | 20 |
| Forward Cockpit and Blinds | 20 |
| Forward Cockpit | 21 |
| Forward Cockpit | 21 |
| Aft Cockpit | 21 |
| Aft Cockpit | 21 |
| Outboard and Bracket | 21 |
| Grill | 21 |
| Aft Cockpit | 22 |
| CONTACTS | 23 |
| Contact details | 23 |
| Telephones | 23 |
| Office hours | 23 |
| Address | 23 |

SPECIFICATIONS

Overview

Second Wind

is waiting to find her new owners. She has everything that you need to accomplish your cruising, liveaboard or lifestyle goals. Please view the complete listing and photos for specifications.

The award-winning SP Cruiser offers year-round boating comfort, trawler-like livability and motoring performance, and simple, versatile sailing and legendary Island Packet quality and value.

Among many unique features include the SP Cruiser's twin cockpits. One aft, perfect for the morning's first cup of coffee, plus one forward, excellent for relaxed seating, cruising or at anchor on a beautiful day.

Large CE Category A - Ocean rated opening windows in the enclosed deckhouse offer panoramic views, while the center windshield panel hinges upward to allow socializing with family and friends in the forward cockpit.

Control of the vessel is made easy and comfortable with dual swivel helm and companion chairs plus a large console forward of the wheel with engine controls and instrumentation. An autopilot gives you the ability to steer the boat from virtually any location aboard with a wireless handheld remote. The forward chairs and L-shaped settee is a great spot for meals and entertainment regardless of the weather.

Basic Information

Category: Cruising Sailboat

Model Year: 2007

Year Built: 2007

Country: United States

Dimensions

LOA: 41' 8" (12.70m)

Beam: 12' 8" (3.86m)

Max Draft: 3' 8" (1.12m)

MFG Length: 41' 0" (12.50m)

Speed, Capacities and Weight

Water Capacity: 130 Gallons

Holding Tank: 50 Gallons

Fuel Capacity: 220 Gallons

Accommodations

Total Cabins: 2

Total Heads: 1

Hull and Deck Information

Hull Material: Fiberglass

Engine Information

Engines: 1

Manufacturer: Yanmar

Model: 4JH4-HTBE

Engine Type: Inboard

Fuel Type: Diesel

DETAILED INFORMATION

Overview

Accommodations

MASTER CABIN

- Center line double berth with access from either side
- Storage cupboards and cabinets port and starboard
- Under berth storage
- In cabin access through to head and shower

GUEST CABIN

- Twin berth
- Storage and cabinets

GALLEY

- Fully equipped galley
- Gimballed stove and oven
- Microwave
- Two refrigerator/freezer compartments (either as a refrigerator or freezer)
- Twin stainless steel sinks
- Pressurized hot and cold water
- Fresh water hand pump

PILOTHOUSE

- Panoramic views all around
- Opening central windscreen
- Forward facing helm seat and forward facing pilot seat
- Engine and navigation instruments
- Teak folding dining table
- L-Shaped settee

Sails & Rigging

- Sloop Rig, Roller Furling Mast, electrically controlled
- New Roller Furling Jib (2020)
- Main and spare main halyards led to Lewmar Ocean Series 40 CST
- Jib halyard led to Lewmar Ocean Series 16C 2-speed winch on mast
- Self tending jib on Hoyt boom
- Centralized sail control console in aft cockpit with single Lewmar Ocean Series 40CEST sheets. All routed below decks to the aft sail control console; jib fuller and outhaul lines run along side deck to aft cockpit area with stoppers and leads to electric winch on console
- Vertical battened mainsail
- Electric winch in cockpit to facilitate sail trim
- All sail control lines replaced in 2019

Electronics, Communication, Navigation, Audio & Entertainment

- Raymarine Autopilot ST6002 with S3G Drive
- Raymarine E-12- 12.1" Multifunctional Display with GPS and 4KW Radome
- Raymarine Smart Controller Wireless Autopilot Remote with Instrument Repeater
- Raymarine ST60 Mounted on Console (2017)
- Flat Screen TV Mounted on Console
- Alpine CD, Radio & Stereo with Alpine with Indoor and Outdoor Speakers (XM Capable)
- XM Receiver and Marine Antenna
- VHF Icom 504
- VHF Remote Mic Icom HM-157
- Digital Antenna For Wireless Cell Phone Repeater/Amplifier
- Mast mounted PA/Hailing/Fog Horn (Installed 2017)
- Taylor Hygrometer, Thermometer and Barometer

Deck Equipment

- Zodiac Cadet Inflatable (2017)
- 4HP Mercury 4 Stroke Outboard with stern rail bracket
- Grill mounted on stern rail
- Raw Water deck wash system
- Muir 1000 Anchor Windlass
- Rocna Anchor, all chain rode (44 LB)
- Secondary Anchor with chain (30' 5/16") and rode (200' 5/8")
- Rod Holder mounted in cockpit transom combing
- Flag Pole Socket flush mounted on transom combing
- Integral stern platform with transom door and emergency boarding ladder with pull strap
- Deep cockpit aft of deckhouse with molded side seats with lockers underneath and steps to side decks
- Side rails, sail control console, folding table, extended hardtop with sail viewing window, transom door to stern platform, overhead light, gasket sole hatches with storage under
- Cockpit and cushions forward of deckhouse with full length seats, walk-thru steps to side decks, socket for table
- Removable Cockpit Table
- Continuous stainless steel bow and side rails to aft cockpit, side gates with quick release hooks
- (4) Fenders
- Dinghy Oars
- Net
- Docklines

Electrical & Mechanical

- Yanmar 110 Turbo Diesel (Oil cooler cleaned out in 2019)
- Frigoboat Keel Cool Refrigeration and Freezer (repair and replacement of parts 2018/2019)
- Side Power 6HP Bow Thruster with Joystick on Pedestal
- Generator Prep Kit
- (2) Cruiseair 16K BTU Air-conditioning with Reverse Cycle Heat
- (2) Solara 160 W solar panels
- Watt Wizard and solar controller
- Electric Macerator Pump with Valves for Overboard Discharge of holding tank
- Shower Sump Pump Replaced (2017)

- 1800 Inverter 1800 W
- Charles 5000 series 3 Stage Battery Charger (UL listed, temperature compensating)
- Electrical DC Grounding/Bonding system for rig and underwater metals
- Balmar High Output 110 Amp Alternator
- Zantrex Invertor
- Sealand Eco Holding Tank Filter (2017)
- Dual 30 Amp AC Dockside power systems with inlet breakers, with 30 Amp 120V shore power/GFCI protection
- Lifeline GPL 27 T Batteries with 5 year warranty (2017)
- In-Line Fuel Pressure Gauge mounted on Racor Fuel Filter (2017)
- PYI PSS Packless Shaft Seal (2019)
- Drive shaft and cutlass bearing (2019)
- Blue Sea SI-ACR Charging Relay (2015)
- (5) 12 V Hella Fans
- Portable Electric Heater

Safety Equipment

- (5) Life Jackets
- Fire Extinguishers
- Flare kit
- Reflective Signal Mirror
- Vest Strobe
- Boat Hook
- Throwable Flotation Device
- Horn
- Aluminum Radar Reflector
- Emergency Tiller
- Jacklines
- Life Sling, Stb Aft Rail

Miscellaneous

- OceanAir Blinds in Salon and Stateroom
- Fishing Tackle Box
- (2) Fishing Rods
- Various Fishing Lures
- Electric Buffer
- Dishes, glassware, eating utensils
- Pots and Pans
- Custom Bedding
- Owners Manuals for vessel and equipment

Exclusions

Owner's personal belongings.

Disclaimer

The Company offers the details of this vessel or yacht in good faith but cannot guarantee or warrant the accuracy of this information nor warrant the condition of the vessel. A buyer should instruct his representatives, agents, or his surveyors, to investigate such details as the buyer desires validated. This vessel or yacht is offered subject to prior sale, price change, or withdrawal without notice.

PHOTOS



Second Wind



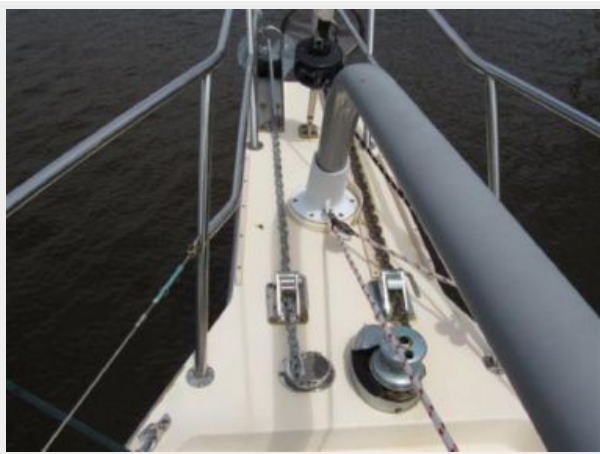
Second Wind



Deck



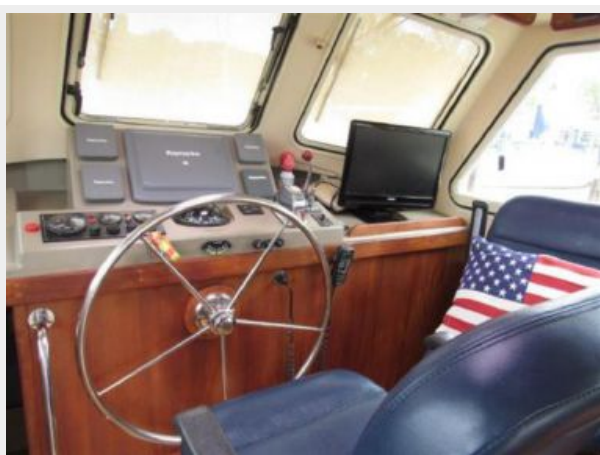
Bow Pulpit and Boom



Bow Pulpit



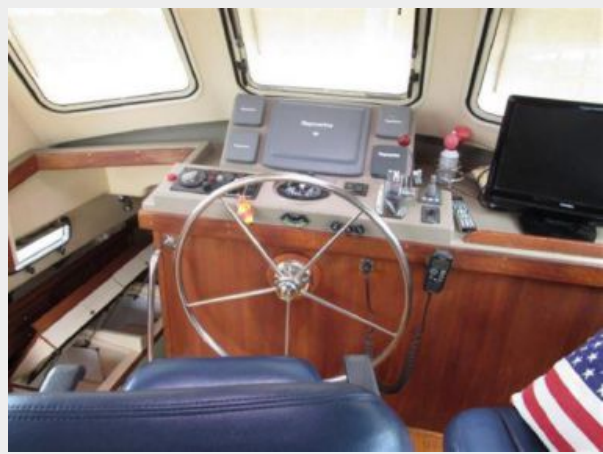
Helm



Helm



Helm



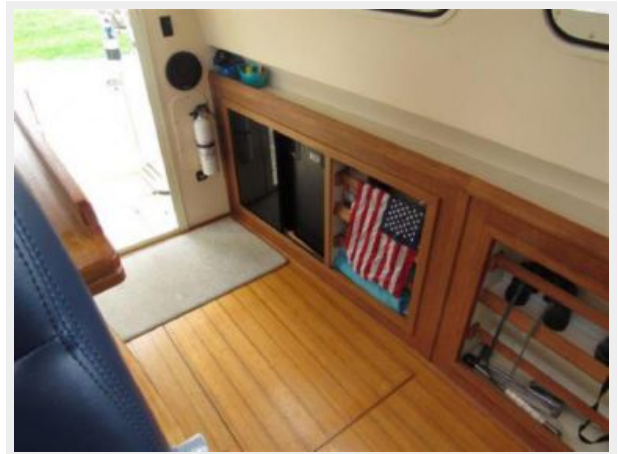
Helm



Cabinetry



Cabinetry and Sole



Refrigeration, Freezer



Refrigeration, Freezer



Oven and Stove



Refrigeration



Companionway



Control Panel



Nav Station



Settee and Dinette



Settee and Dinette Deployed



Helm



Helm



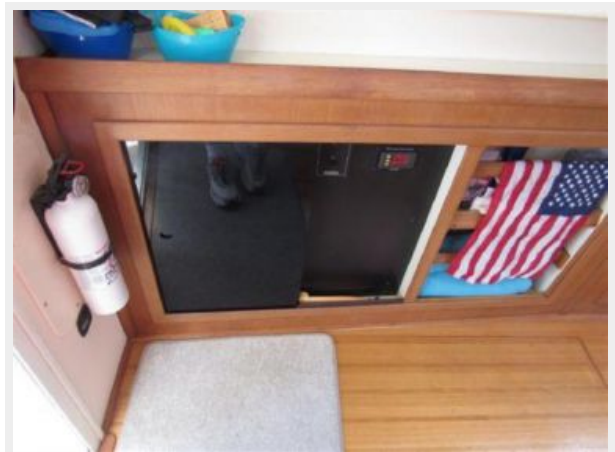
Helm



Electronics



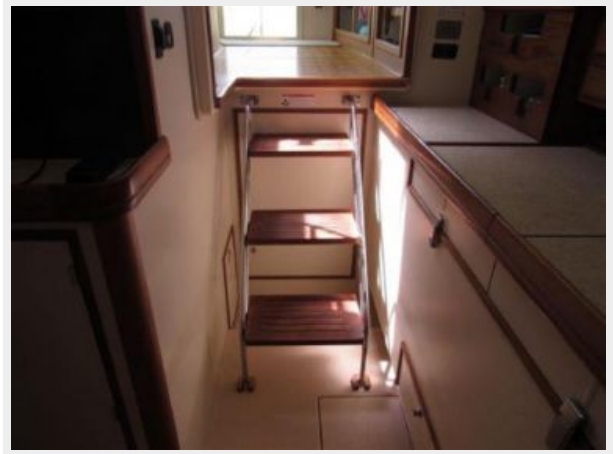
Panel



Panel



Companionway



Engine Access Under Companionway



Control Panel



Storage



Galley



Galley



Refrigeration



Refrigeration



SS Double Sink



Chart Table



Chart Table



Aft Cabin



Aft Cabin Cabinetry



Head



Shower



Owner's Cabin



Owner's Cabin



Owner's Cabin



Cockpit and controls



Bow Pulpit



Deck Looking Aft



Forward Cockpit



Forward Cockpit and Blinds



Forward Cockpit



Forward Cockpit



Aft Cockpit



Aft Cockpit



Outboard and Bracket



Grill



Aft Cockpit



CONTACTS

Andrey Shestakov, leading yacht broker of the sales department of Shestakov Yacht Sales Inc. Shestakov Yacht Sales Inc., the official representative of the Miami/Fort Lauderdale FL headquarters.

Contact details

Email: andrey@shestakovyachtsales.com

Web: shestakovyachtsales.com/en/

Telephones

USA: +1(954)274-4435

Office hours

Monday – Saturday: **9:00 - 21:00** EDT

Sunday: **closed**

Address



Harbour Towne Marina, 850 NE 3rd St,
STE 213, Dania, FL 33004