

SECOND WIND — ISLAND PACKET YACHTS



Судостроитель:

ISLAND PACKET YACHTS

Год постройки: 2007

Модель: Крейсерская яхта

Цена: ЦЕНА ЯХТЫ ПО ЗАПРОСУ

Местонахождение: United States

Длина общая: 41' 8" (12.70m)

Ширина: 12' 8" (3.86m)

Макс. осадка: 3' 8" (1.12m)

Купить **Second Wind — ISLAND PACKET YACHTS** а также выбрать подходящую вам яхту из нашего каталога яхт вам поможет опытный яхтенный брокер Андрей Шестаков. На сегодняшний день компания **Shestakov Yacht Sales Inc.** имеет большое количество яхт в собственном списке продаж, а также тесно сотрудничает со всеми крупными яхтенными производителями по всему миру. Для того чтобы купить яхту **Second Wind — ISLAND PACKET YACHTS** а также проконсультироваться по любому вопросу связанному с покупкой, продажей, чартером яхт позвоните по телефону **+7(918)465-66-44**.

ОГЛАВЛЕНИЕ

| | |
|-------------------------------|----|
| ОГЛАВЛЕНИЕ | 2 |
| ХАРАКТЕРИСТИКИ | 5 |
| Обзор | 5 |
| Основная информация | 5 |
| Размеры | 6 |
| Скорость, вместимость и масса | 6 |
| Размещение | 6 |
| Корпус и палуба | 6 |
| Информация о двигателе | 6 |
| ПОДРОБНОЕ ОПИСАНИЕ | 7 |
| Overview | 7 |
| Исключения | 11 |
| Отказ от ответственности | 11 |
| ФОТОГРАФИИ | 12 |
| Second Wind | 12 |
| Second Wind | 13 |
| Deck | 13 |
| Bow Pulpit and Boom | 13 |
| Bow Pulpit | 13 |
| Helm | 13 |
| Helm | 13 |
| Helm | 14 |
| Helm | 14 |
| Cabinetry | 14 |
| Cabinetry and Sole | 14 |
| Refrigeration, Freezer | 14 |
| Refrigeration, Freezer | 14 |
| Oven and Stove | 15 |

| | |
|----------------------------------|----|
| Refrigeration | 15 |
| Companionway | 15 |
| Control Panel | 15 |
| Nav Station | 15 |
| Settee and Dinette | 15 |
| Settee and Dinette Deployed | 16 |
| Helm | 16 |
| Helm | 16 |
| Helm | 16 |
| Electronics | 16 |
| Panel | 16 |
| Panel | 17 |
| Companionway | 17 |
| Engine Access Under Companionway | 17 |
| Control Panel | 17 |
| Storage | 17 |
| Galley | 17 |
| Galley | 18 |
| Refrigeration | 18 |
| Refrigeration | 18 |
| SS Double Sink | 18 |
| Chart Table | 18 |
| Chart Table | 18 |
| Aft Cabin | 19 |
| Aft Cabin Cabinetry | 19 |
| Head | 19 |
| Shower | 19 |
| Owner's Cabin | 19 |
| Owner's Cabin | 19 |

| | |
|----------------------------|-----------|
| Owner's Cabin | 20 |
| Cockpit and controls | 20 |
| Bow Pulpit | 20 |
| Deck Looking Aft | 20 |
| Forward Cockpit | 20 |
| Forward Cockpit and Blinds | 20 |
| Forward Cockpit | 21 |
| Forward Cockpit | 21 |
| Aft Cockpit | 21 |
| Aft Cockpit | 21 |
| Outboard and Bracket | 21 |
| Grill | 21 |
| Aft Cockpit | 22 |
| КОНТАКТЫ | 23 |
| Контактная информация | 23 |
| Телефоны | 23 |
| Время работы | 23 |
| Адрес | 23 |

ХАРАКТЕРИСТИКИ

Обзор

Second Wind

is waiting to find her new owners. She has everything that you need to accomplish your cruising, liveaboard or lifestyle goals. Please view the complete listing and photos for specifications.

The award-winning SP Cruiser offers year-round boating comfort, trawler-like livability and motoring performance, and simple, versatile sailing and legendary Island Packet quality and value.

Among many unique features include the SP Cruiser's twin cockpits. One aft, perfect for the morning's first cup of coffee, plus one forward, excellent for relaxed seating, cruising or at anchor on a beautiful day.

Large CE Category A - Ocean rated opening windows in the enclosed deckhouse offer panoramic views, while the center windshield panel hinges upward to allow socializing with family and friends in the forward cockpit.

Control of the vessel is made easy and comfortable with dual swivel helm and companion chairs plus a large console forward of the wheel with engine controls and instrumentation. An autopilot gives you the ability to steer the boat from virtually any location aboard with a wireless handheld remote. The forward chairs and L-shaped settee is a great spot for meals and entertainment regardless of the weather.

Основная информация

Тип судна: Крейсерская яхта

Модельный год: 2007

Год постройки: 2007

Страна: United States

Размеры

Длина общая: 41' 8" (12.70m)

Ширина: 12' 8" (3.86m)

Макс. осадка: 3' 8" (1.12m)

Длина привального бруса: 41' 0"
(12.50m)

Скорость, вместимость и масса

Вместимость воды: 130 Gallons

Вместимость сточного бака: 50 Gallons

Объем топливного бака: 220 Gallons

Размещение

Всего кают: 2

Всего ком. состава: 1

Корпус и палуба

Материал корпуса: Fiberglass

Информация о двигателе

Двигатели: 1

Производитель: Yanmar

Модель: 4JH4-HTBE

Тип двигателя: Inboard

Тип топлива: Diesel

ПОДРОБНОЕ ОПИСАНИЕ

Overview

Accommodations

MASTER CABIN

- Center line double berth with access from either side
- Storage cupboards and cabinets port and starboard
- Under berth storage
- In cabin access through to head and shower

GUEST CABIN

- Twin berth
- Storage and cabinets

GALLEY

- Fully equipped galley
- Gimballed stove and oven
- Microwave
- Two refrigerator/freezer compartments (either as a refrigerator or freezer)
- Twin stainless steel sinks
- Pressurized hot and cold water
- Fresh water hand pump

PILOTHOUSE

- Panoramic views all around
- Opening central windscreen
- Forward facing helm seat and forward facing pilot seat
- Engine and navigation instruments
- Teak folding dining table
- L-Shaped settee

Sails & Rigging

- Sloop Rig, Roller Furling Mast, electrically controlled
- New Roller Furling Jib (2020)
- Main and spare main halyards led to Lewmar Ocean Series 40 CST
- Jib halyard led to Lewmar Ocean Series 16C 2-speed winch on mast
- Self tending jib on Hoyt boom
- Centralized sail control console in aft cockpit with single Lewmar Ocean Series 40CEST sheets. All routed below decks to the aft sail control console; jib fuller and outhaul lines run along side deck to aft cockpit area with stoppers and leads to electric winch on console
- Vertical battened mainsail
- Electric winch in cockpit to facilitate sail trim
- All sail control lines replaced in 2019

Electronics, Communication, Navigation, Audio & Entertainment

- Raymarine Autopilot ST6002 with S3G Drive
- Raymarine E-12- 12.1" Multifunctional Display with GPS and 4KW Radome
- Raymarine Smart Controller Wireless Autopilot Remote with Instrument Repeater
- Raymarine ST60 Mounted on Console (2017)
- Flat Screen TV Mounted on Console
- Alpine CD, Radio & Stereo with Alpine with Indoor and Outdoor Speakers (XM Capable)
- XM Receiver and Marine Antenna
- VHF Icom 504
- VHF Remote Mic Icom HM-157
- Digital Antenna For Wireless Cell Phone Repeater/Amplifier
- Mast mounted PA/Hailing/Fog Horn (Installed 2017)
- Taylor Hygrometer, Thermometer and Barometer

Deck Equipment

- Zodiac Cadet Inflatable (2017)
- 4HP Mercury 4 Stroke Outboard with stern rail bracket
- Grill mounted on stern rail
- Raw Water deck wash system
- Muir 1000 Anchor Windlass
- Rocna Anchor, all chain rode (44 LB)
- Secondary Anchor with chain (30' 5/16") and rode (200' 5/8")
- Rod Holder mounted in cockpit transom combing
- Flag Pole Socket flush mounted on transom combing
- Integral stern platform with transom door and emergency boarding ladder with pull strap
- Deep cockpit aft of deckhouse with molded side seats with lockers underneath and steps to side decks
- Side rails, sail control console, folding table, extended hardtop with sail viewing window, transom door to stern platform, overhead light, gasket sole hatches with storage under
- Cockpit and cushions forward of deckhouse with full length seats, walk-thru steps to side decks, socket for table
- Removable Cockpit Table
- Continuous stainless steel bow and side rails to aft cockpit, side gates with quick release hooks
- (4) Fenders
- Dinghy Oars
- Net
- Docklines

Electrical & Mechanical

- Yanmar 110 Turbo Diesel (Oil cooler cleaned out in 2019)
- Frigoboat Keel Cool Refrigeration and Freezer (repair and replacement of parts 2018/2019)
- Side Power 6HP Bow Thruster with Joystick on Pedestal
- Generator Prep Kit
- (2) Cruiseair 16K BTU Air-conditioning with Reverse Cycle Heat
- (2) Solara 160 W solar panels
- Watt Wizard and solar controller
- Electric Macerator Pump with Valves for Overboard Discharge of holding tank
- Shower Sump Pump Replaced (2017)

- 1800 Inverter 1800 W
- Charles 5000 series 3 Stage Battery Charger (UL listed, temperature compensating)
- Electrical DC Grounding/Bonding system for rig and underwater metals
- Balmar High Output 110 Amp Alternator
- Zantrex Invertor
- Sealand Eco Holding Tank Filter (2017)
- Dual 30 Amp AC Dockside power systems with inlet breakers, with 30 Amp 120V shore power/GFCI protection
- Lifeline GPL 27 T Batteries with 5 year warranty (2017)
- In-Line Fuel Pressure Gauge mounted on Racor Fuel Filter (2017)
- PYI PSS Packless Shaft Seal (2019)
- Drive shaft and cutlass bearing (2019)
- Blue Sea SI-ACR Charging Relay (2015)
- (5) 12 V Hella Fans
- Portable Electric Heater

Safety Equipment

- (5) Life Jackets
- Fire Extinguishers
- Flare kit
- Reflective Signal Mirror
- Vest Strobe
- Boat Hook
- Throwable Flotation Device
- Horn
- Aluminum Radar Reflector
- Emergency Tiller
- Jacklines
- Life Sling, Stb Aft Rail

Miscellaneous

- OceanAir Blinds in Salon and Stateroom
- Fishing Tackle Box
- (2) Fishing Rods
- Various Fishing Lures
- Electric Buffer
- Dishes, glassware, eating utensils
- Pots and Pans
- Custom Bedding
- Owners Manuals for vessel and equipment

Исключения

При продаже яхты исключаются личные вещи владельца.

Отказ от ответственности

Компания предоставляет описание судна или яхты добросовестно, но не может гарантировать точность этой информации, а также не ручается за техническое состояние. Покупатель должен проинструктировать своих агентов или оценщиков исследовать представленную информацию более подробно, по собственному желанию. Продажа судна или яхты, изменение цены или снятие с продажи будет происходить без предварительного уведомления.

ФОТОГРАФИИ



Second Wind



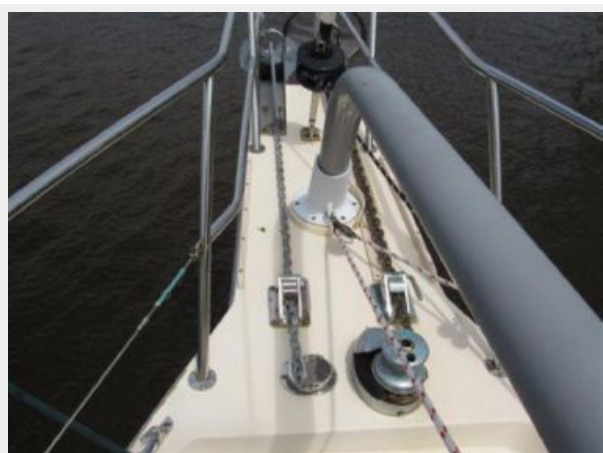
Second Wind



Deck



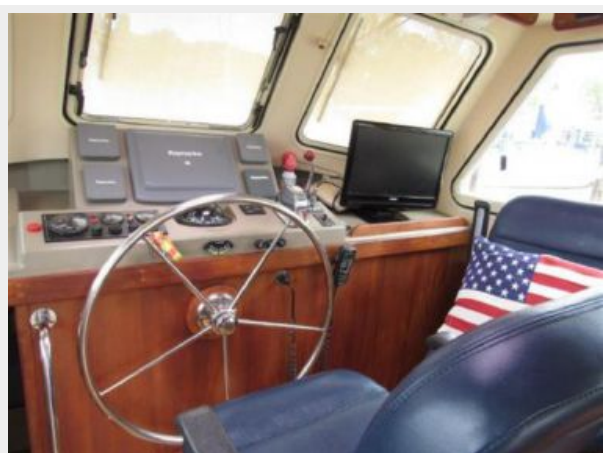
Bow Pulpit and Boom



Bow Pulpit



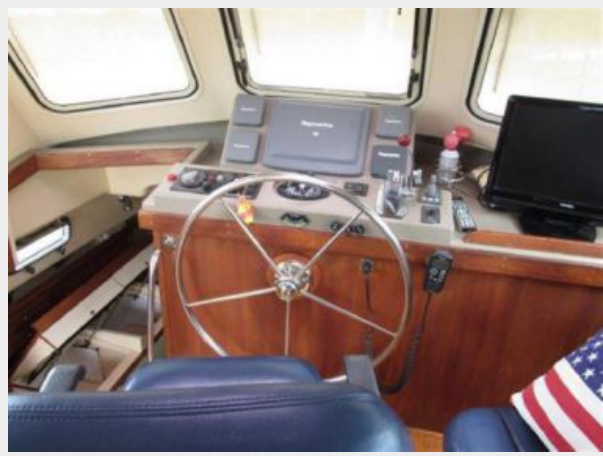
Helm



Helm



Helm



Helm



Cabinetry



Cabinetry and Sole



Refrigeration, Freezer



Refrigeration, Freezer



Oven and Stove



Refrigeration



Companionway



Control Panel



Nav Station



Settee and Dinette



Settee and Dinette Deployed



Helm



Helm



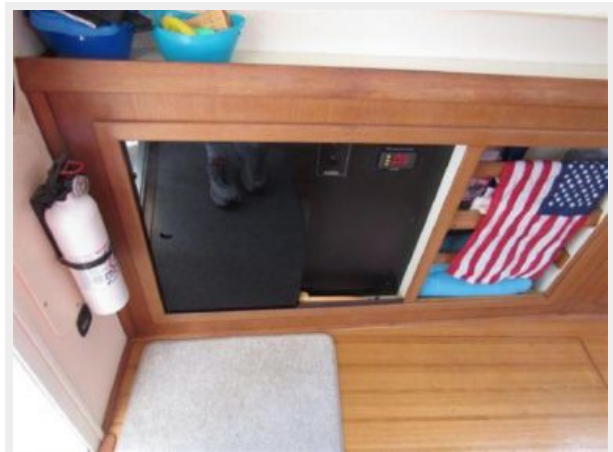
Helm



Electronics



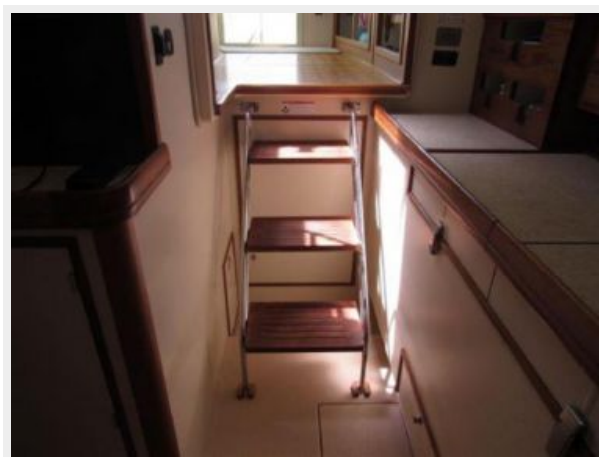
Panel



Panel



Companionway



Engine Access Under Companionway



Control Panel



Storage



Galley



Galley



Refrigeration



Refrigeration



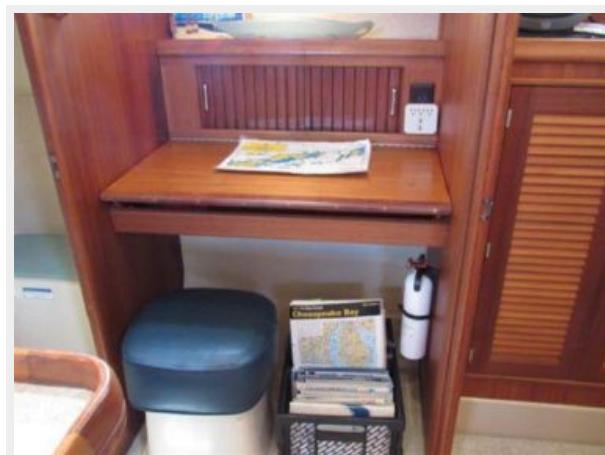
SS Double Sink



Chart Table



Chart Table



Aft Cabin



Aft Cabin Cabinetry



Head



Shower



Owner's Cabin



Owner's Cabin



Owner's Cabin



Cockpit and controls



Bow Pulpit



Deck Looking Aft



Forward Cockpit



Forward Cockpit and Blinds



Forward Cockpit



Forward Cockpit



Aft Cockpit



Aft Cockpit



Outboard and Bracket



Grill



Aft Cockpit



КОНТАКТЫ

Андрей Шестаков (Andrey Shestakov) – ведущий яхтенный брокер отдела продаж яхт и судов компании Shestakov Yacht Sales Inc. Официальный представитель Shestakov Yacht Sales Inc. для русскоговорящих клиентов в центральном офисе компании в Майами/Форт Лодердейл/Флорида/США.

Контактная информация

Email: andrey@shestakovyachtsales.com

Web: shestakovyachtsales.com

Телефоны

Краснодарский край: **+7(918)465-66-44**

США, Майами, Флорида: **+1(954)274-4435**

Время работы

Понедельник – Суббота: **9:00 - 21:00**
EDT

Воскресенье: **Закрето**

Адрес



Harbour Towne Marina, 850 NE 3rd St,
STE 213, Dania, FL 33004