

WENDY — BENETEAU



Builder: BENETEAU

Year Built: 2001

Model: Performance Sailboat

Price: PRICE ON APPLICATION

Location: United States

LOA: 41' 8" (12.70m)

Beam: 13' 0" (3.96m)

Max Draft: 4' 10" (1.47m)

Our experienced yacht broker, Andrey Shestakov, will help you choose and buy a yacht that best suits your needs **Wendy — BENETEAU** from our catalogue. Presently, at Shestakov Yacht Sales Inc., we have a wide variety of yachts available on our sale's list. We also work in close contact with all the big yacht manufacturers from all over the world.

If you would like to buy a yacht **Wendy — BENETEAU** or would like help answering any questions concerning purchasing, selling or chartering a yacht, please call **+1(954)274-4435**

TABLE OF CONTENTS

TABLE OF CONTENTS	2
SPECIFICATIONS	3
Overview	3
Basic Information	3
Dimensions	3
Speed, Capacities and Weight	3
Accommodations	4
Hull and Deck Information	4
Engine Information	4
DETAILED INFORMATION	5
Overview	5
Exclusions	7
Disclaimer	7
PHOTOS	8
Port side in slip	8
Starboard Side in slip	8
Transom	8
Transom	8
Keel (reference)	8
2 spreader mast	8
Rudder and Prop (reference)	9
Westerbeke Diesel	14
CONTACTS	15
Contact details	15
Telephones	15
Office hours	15
Address	15

SPECIFICATIONS

Overview

PERFORMANCE CRUISER - METICULOUSLY CARED FOR This 2001 Beneteau Oceanis 411, 'Wendy', is a beautiful performance-cruiser with a unique 3-cabin layout. She hits that sweet spot for size, stability to be a safe family cruising boat. Her three separate double cabins and two heads offer fantastic accommodation, with a huge Master suite in the bow offering private facilities."Wendy" She's spent her life on the Chesapeake Bay and has been meticulously cared for by the original owner. A fun and easy boat to sail. Her saloon is spacious and comfortable, with easy access to her port side galley, second heads and chart table to starboard. Sleeps 6 (8 with the dinette converted). Call Listing Broker for more information.

Basic Information

Category: Performance Sailboat

Sub Category: Cruising Sailboat

Model Year: 2001

Year Built: 2001

Country: United States

Dimensions

LOA: 41' 8" (12.70m)

LWL: 36' 1" (11.00m)

Beam: 13' 0" (3.96m)

Max Draft: 4' 10" (1.47m)

MFG Length: 41' 0" (12.50m)

Speed, Capacities and Weight

Displacement: 17196 Pounds

Water Capacity: 145 Gallons

Holding Tank: 2 Gallons

Fuel Capacity: 39 Gallons

Accommodations

Total Cabins: 3

Sleeps: 4

Total Heads: 2

Hull and Deck Information

Hull Material: Fiberglass

Hull Finish: Plastic

Hull Designer: Groupe Finot

Engine Information

Engines: 1

Manufacturer: westerbeke

Engine Type: Inboard

Fuel Type: Diesel

DETAILED INFORMATION

Overview

General A Couple's Cruising Boat with Offshore Capabilities With hundreds of boats sold worldwide since the Beneteau 411 was introduced in 1997, it has already joined the ranks of modern cruising classics as one of the more popular and successful 40-footers of all time. "WENDY" (hull # 219) is in the approximate 10% of these boats that were built in the three-cabin version which preserves a solid sailing platform, with a good turns of speed, well thought-out accommodations, and simple, logical systems. Personal items are excluded including the half-hull mounted on the bulkhead.

HULL AND DECK

- Removable Forespar Dinghy Davits
- 2 dorades on cabin-top
- Deep cockpit locker to starboard
- Deep lazarette at starboard quarter
- Line locker cockpit portside
- Propane locker at port quarter holds 2 tanks
- Reinforced dodger and bimini
- Cockpit cushions
- Freshwater shower at stern platform

ENGINE (POWERPLANT)

- 2001 Westerbeke 44A 42hp diesel
- 2400 hours
- NEW Alternator (2010)
- NEW raw water pump (2017)
- NEW starter (2018)
- NEW Raycor fuel System (2018)
- 4 Easy access locations from three sides: companionway stairs and each of the aft cabins.
- 2-195 AGM house batteries, 1-165 AGM Starting battery (2020)
- 2-30-amp shore power plugs with 1-50-foot and 2-25 foot cords with 2/30 amp splitter

SAILS, RIGGING & CANVAS

- In-mast furling Neil Pryde furling mainsail (2013)
- Rolly Tasker 150% genoa on Roller-furling (2019)
- Rigid boomvang
- Traveler on cabintop forward of companionway
- All lines led to the cockpit

- Primary winches: 2: Lewmar 48# self-tailing
- Cabintop winches: 2: Lewmar 40# self-tailing
- Custom Sunbrella California dodger (2017)
- Sunbrella full bimini with sunshades (2017)

NAVIGATION

- Sentry smart battery charger (in lazarette)
- Chartplotter Raymarine C80 (2009)
- Depth/speed/wind Raymarine tridata
- Auto pilot Raymarine C80 (2013)
- VHF Horizon Intrepid with Ram Mic at helm
- Charger Cruisair Sentry

GROUND TACKLE

- Anchor Delta 44 lb
- Rode 250' chain (2009)
- Windlass Lewmar Pro Series Stainless (2009)
- Deep anchor locker with wash-down
- NEW Washdown pump Jabsco (2018)

Accommodations 3 Staterooms - 1 forward and 2 aft

- The master cabin suite is located forward with large Pullman-style berth to starboard.
- Sliding drawers beneath the berth, along with a hanging closet and another closet with shelves to port, offer plenty of storage
- There's also a comfy bench to port
- There's plenty of light in the cabin as well, thanks to two overhead hatches, two cabin-top windows and two port-lights.
- Two private guest cabins aft, one port and one starboard
- Both feature a large double berth with shelves and closet outboard for storage
- There's a hatch overhead, a cabin-top window and port-light for natural light.
- Convertible dinette (perfect for a Pack & Play)

2 heads; 1 forward of Master's cabin and 1 amidship with 15 gallon vinyl tanks.

- The forward head is an easy-to-keep-clean molded unit, with lots of bright light courtesy of a large hatch
- Both heads have more than 6-foot headroom
- Both heads flush with fresh water
- Amidship head replaced 2019
- Forward head pump replaced 2019

SALON

- 2-16000 Cruisair Air and heat units with SMX controls

- Hot water 6 gal Atwood 93757
- Electric Bilge pump Jabsco
- Manual Bilge pump Jabsco

GALLEY

- Well-equipped galley, featuring loads of counter space and bright light courtesy of a hatch overhead, two cabin top windows and a port-light.
- 2 stainless sinks with a molded-to-fit plastic cover for more counter space
- Hot and cold pressure water
- Dedicated drinking water spigot and a microwave oven
- NEW Isotherm refrigerator/freezer (2019)
- 2-burner Force-10 stove/oven
- Hamilton Beach microwave oven

Exclusions

Owner's personal belongings.

Disclaimer

The Company offers the details of this vessel or yacht in good faith but cannot guarantee or warrant the accuracy of this information nor warrant the condition of the vessel. A buyer should instruct his representatives, agents, or his surveyors, to investigate such details as the buyer desires validated. This vessel or yacht is offered subject to prior sale, price change, or withdrawal without notice.

PHOTOS

Port side in slip



Starboard Side in slip



Transom



Transom



2 spreader mast



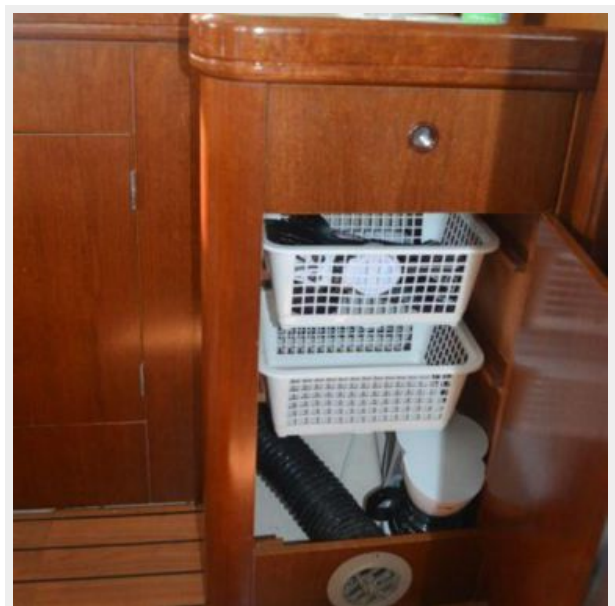
Keel (reference)

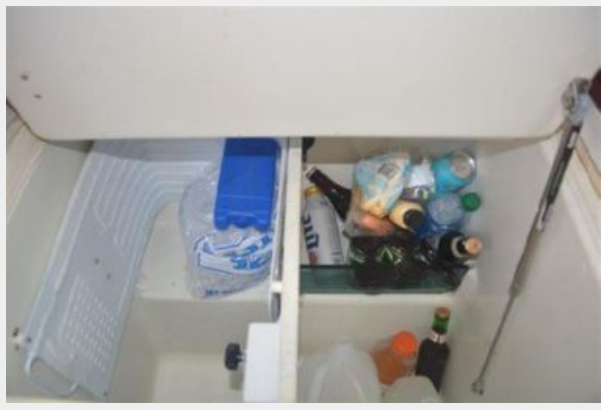


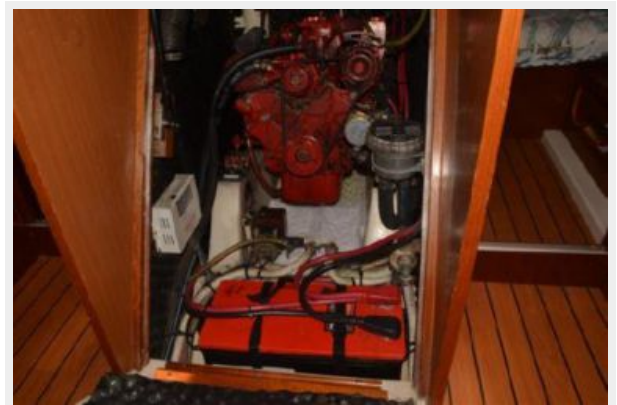
Rudder and Prop (reference)











Westerbeke Diesel



CONTACTS

Andrey Shestakov, leading yacht broker of the sales department of Shestakov Yacht Sales Inc. Shestakov Yacht Sales Inc., the official representative of the Miami/Fort Lauderdale FL headquarters.

Contact details

Email: andrey@shestakovyachtsales.com

Web: shestakovyachtsales.com/en/

Telephones

USA: +1(954)274-4435

Office hours

Monday – Saturday: **9:00 - 21:00** EDT

Sunday: **closed**

Address



Harbour Towne Marina, 850 NE 3rd St,
STE 213, Dania, FL 33004