

ISMINI — JEANNEAU



Builder: JEANNEAU

Year Built: 1987

Model: Cruising Sailboat

Price: PRICE ON APPLICATION

Location: United States

LOA: 41' 1" (12.52m)

Beam: 12' 11" (3.94m)

Max Draft: 6' 5" (1.96m)

Our experienced yacht broker, Andrey Shestakov, will help you choose and buy a yacht that best suits your needs **Ismini — JEANNEAU** from our catalogue. Presently, at Shestakov Yacht Sales Inc., we have a wide variety of yachts available on our sale's list. We also work in close contact with all the big yacht manufacturers from all over the world.

If you would like to buy a yacht **Ismini — JEANNEAU** or would like help answering any questions concerning purchasing, selling or chartering a yacht, please call **+1(954)274-4435**

TABLE OF CONTENTS

TABLE OF CONTENTS	2
SPECIFICATIONS	7
Overview	7
Basic Information	8
Dimensions	8
Speed, Capacities and Weight	8
Accommodations	8
Hull and Deck Information	9
Engine Information	9
DETAILED INFORMATION	10
Overview	10
Exclusions	11
Disclaimer	11
PHOTOS	12
2	12
3	12
4	12
5	12
6	13
7	13
8	13
9	13
10	13
11	13
13	14
12	14
14	14
15	14

17	15
16	15
18	15
19	15
21	16
20	16
23	16
22	16
24	17
25	17
26	17
27	17
28	18
29	18
30	18
31	18
32	19
33	19
34	19
35	19
36	20
37	20
38	20
39	20
40	21
41	21
42	21
43	21
44	22

45	22
46	22
47	22
49	23
48	23
50	23
51	23
53	24
52	24
54	24
55	24
56	25
57	25
58	25
59	25
60	25
61	25
62	26
63	26
64	26
65	26
67	27
66	27
68	27
69	27
70	28
71	28
73	28
72	28

74	29
75	29
76	29
77	29
78	30
79	30
80	30
81	30
82	31
83	31
84	31
85	31
86	32
87	32
88	32
89	32
91	33
90	33
92	33
93	33
94	34
95	34
96	34
97	34
98	34
99	34
100	35
101	35
102	35

103	35
104	35
105	35
106	36
107	36
108	36
109	36
111	37
110	37
113	37
112	37
114	38
CONTACTS	39
Contact details	39
Telephones	39
Office hours	39
Address	39

SPECIFICATIONS

Overview

Just put on the market after cruising the world! Ismini is a very capable Offshore cruiser-racer, she has crossed the Atlantic 3 times with her current owner and proven herself well as a bluewater yacht. She is very well-equipped befitting her ocean-going history. She is fitted with both an Autohelm and wind vane steering for the best of both worlds. The current owner has sailed her for the past 9 years and is now retiring from sailing and moving back home overseas. Detailed below you will see a fine list of included equipment with the boat. Following is Jeanneau's description of this fine yacht... "Sun Legende 41: Designed by Doug Peterson, is a first class yacht. Fast and powerful, the graceful lines of Sun Legende 41 slide effortlessly through the waves: the deck gear, influenced by the constant quest of better performance enhances the steering and handling qualities of the boat, as also does the permanent backstay adjuster, and genoa sheeting cars with instant control from the cockpit. The combination of the best equipment and stainless steel (entirely conceived and treated by Jeanneau) promises strength and durability. The enormous cockpit, elegancy streamlined in the extension of the coachroof, is entirely battened in teak: the sail lockers are generous, and, as an example of the care taken in the design of Sun Legende 41, there is a special stowage compartment to starboard for the coachroof hatch. The boat is constructed entirely in handled layers following traditional methods. The hull of the Sun Legende 41 uses an exclusive material developed by Jeanneau and Du Pont de Nemours and known as ARAMAT K, of glass fibre / Kevlar. The lead keel will assist the performance to windward of the Sun Legende 41 when racing, as much as the cast iron keel or the lifting keel in fast cruising or in shallow draft. Sun Legend is a stately sailing yacht, the teak woodwork which is used for the interior finish of Sun Legende 41 attains the level of refinement associated with quality products. The saloon with its horizontal beaming, is separated from the galley and navigation areas by a beautiful horse-shoe shaped bulkhead. The positioning of the galley and chart table in the widest part of the boat gives them a wonderful sense of space. This new concept gives much storage space (large oilskin hanging locker at the foot of the companionway) and many refinements whereby galley with extractor hood; bread storage bin, hot water piping, navigating position with shelved chart storage space, electric panel locker, lectern-type desk. The ventilation system of Sun Legende 41 caters for sailing in every latitude. There are no less than nine portholes; which ideally regulate air circulation." Partial Equipment List: 1 gasoline electrical generator 230V 1100W 8 fenders 1 Delta anchor with 8mm chain 1 electrical windlass - Lowfrans 2 extra anchors Danforth type 1 tiller emergency steering 1 Hydrovane Windpilot 1 Autopilot Autohelm ST6002, with steering direct on square 6 extra diesel cans tot. 30 usg. Dingy AB 2,5m aluminum bottom Yamaha 8hp 2 stroke outboard many mooring lines extra sheets and light wind sheets for spinnaker 1 spinnaker 1 spinnaker pole 1 permanent table with foldable sides in cockpit 1 Garmin GPS 720 plotter with AIS true heading 1 Silva Nexus

wind indicator1 Silva Star log/depth sounder1 Echopilot forward depth sounder1 SSB open Ham radio, ICOM706, with modem and tuner1 VHF Horizon permanent radio1 VHF handheld Cobra1 CD player/radio1 binoculars1 Baltic life jacket with safety harness XLmany lifejacketsmany safety harnesses1 sewing machine Husqvarna 230V can work with inverter many tools and electric tools lots of spare parts Linens and CushionsComplete Kitchenware3 fansemergency equipment, flares etc.1 extra genoa medium/ok shape serviceable1 extra mainsail, old but serviceable1 small storm jib2 inverters 12-230V, 300w and 3000W2 house lithium batteries 2x100Ah1 solar regulator for lithium batteries max 12,6V2 lead batteries 2x105Ah for start, head and freezer1 solar regulator for lead batteries1 electric Head1 tap för seawater electric pump1 tap charcoal freshwater filter1 new refrigerator Compressor (2020)1 freezer box Sunwind40 ensign flags different countries1 Perkins 4108 diesel, new filters and oil.3 Blade folding prop1 bosuns chair2 climbing gear for halyard.1 tricolor led in mast top3 LED running lights250W of solar panelsThis vessel is currently setup with 230vac with Euro Outlets

Basic Information

Category: Cruising Sailboat

Model Year: 1987

Year Built: 1987

Country: United States

Dimensions

LOA: 41' 1" (12.52m)

LWL: 32' 9" (9.98m)

LOD: 40' 2" (12.24m)

Beam: 12' 11" (3.94m)

Max Draft: 6' 5" (1.96m)

MFG Length: 41' 0" (12.50m)

Speed, Capacities and Weight

Displacement: 17198 Pounds

Water Capacity: 150 Gallons

Fuel Capacity: 40 Gallons

Accommodations

Total Cabins: 3

Total Heads: 1

Hull and Deck Information

Hull Material: Fiberglass

Hull Designer: Jeanneau

Exterior Designer: Doug Peterson

Engine Information

Engines: 1

Manufacturer: Perkins

Model: 4108

Engine Type: Inboard

Fuel Type: Diesel

DETAILED INFORMATION

Overview

Electronics

- Depthsounder
- Log-speedometer
- Navigation center
- Plotter
- Autopilot
- Compass
- VHF
- Radio
- Cockpit speakers

Sails

- Battened mainsail
- Furling genoa
- Storm jib
- Spinnaker

Rigging

- Spinnaker pole

Inside Equipment

- Battery charger
- Marine head
- Refrigerator

Electrical Equipment

- Electrical Circuit: 220V

Outside Equipment/Extras

- Gangway
- Solar panel
- Cockpit table

- Outboard engine brackets
- Tender

Covers

- Lazyjacks

Exclusions

Owner's personal belongings.

Disclaimer

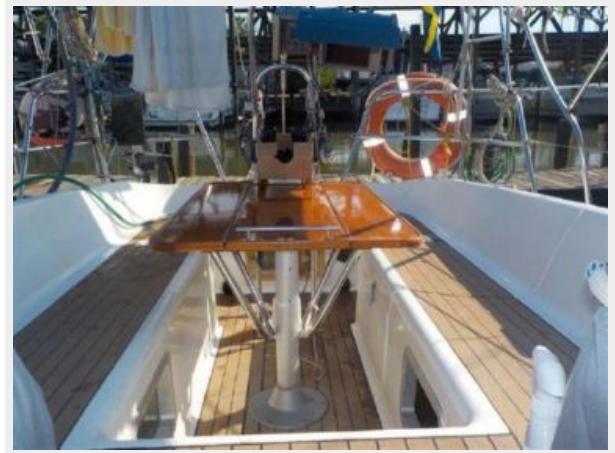
The Company offers the details of this vessel or yacht in good faith but cannot guarantee or warrant the accuracy of this information nor warrant the condition of the vessel. A buyer should instruct his representatives, agents, or his surveyors, to investigate such details as the buyer desires validated. This vessel or yacht is offered subject to prior sale, price change, or withdrawal without notice.

PHOTOS

2



3



4



5



6



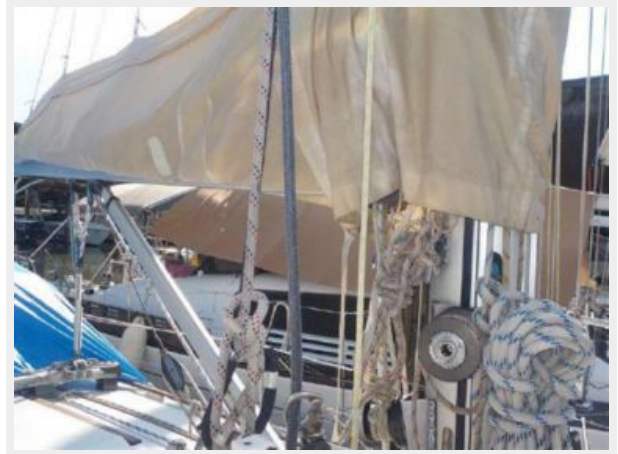
7



8



9



10



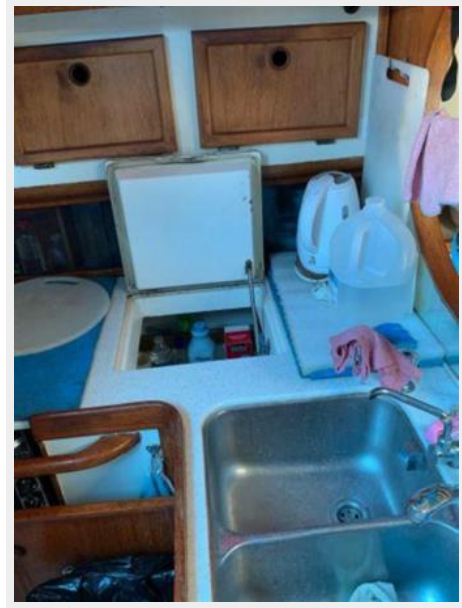
11



12



13



14



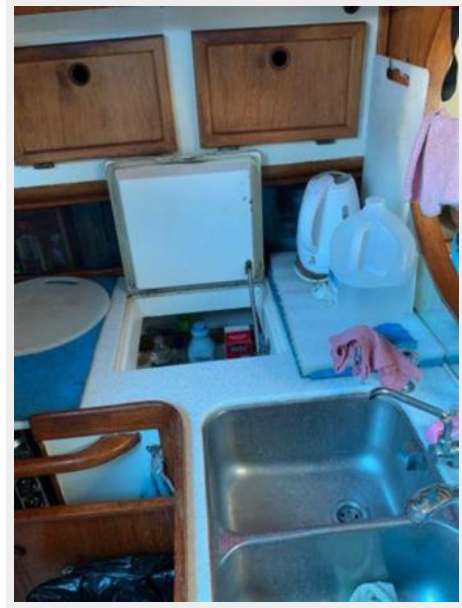
15



16



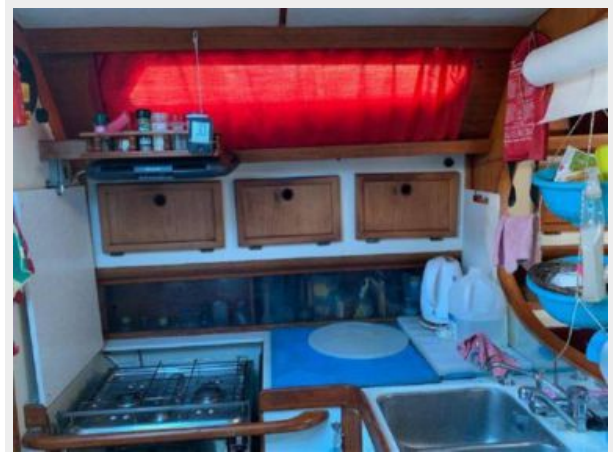
17



18



19



20



21



22



23



24



25



26



27



28



29



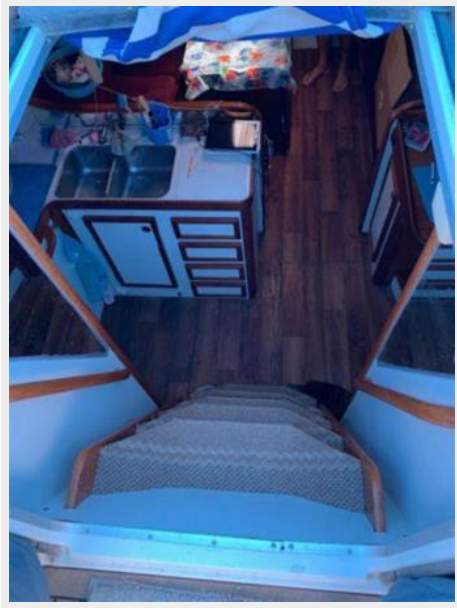
30



31



32



33



34



35



36



37



38



39



40



41



42



43



44



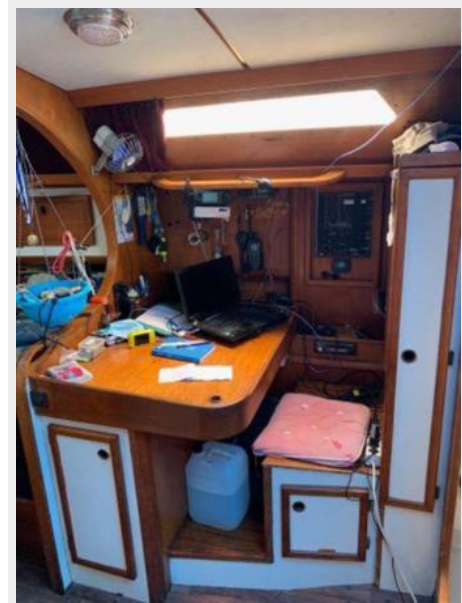
45



46



47



48



49



50



51



52



53



54



55



56



57



58



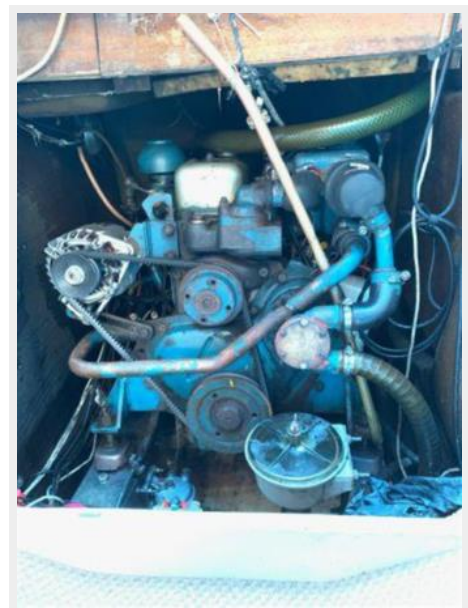
59



60



61



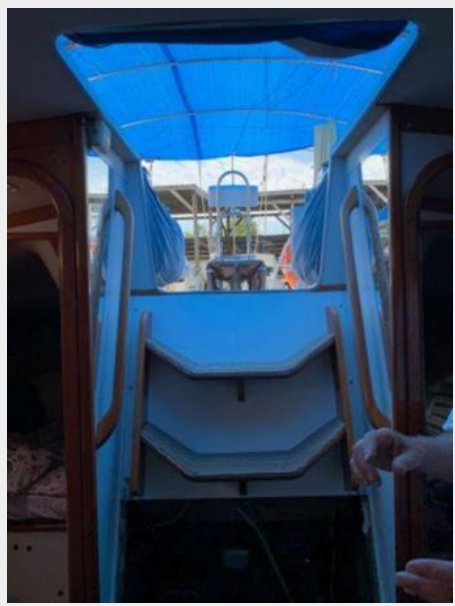
62



63



64



65



66



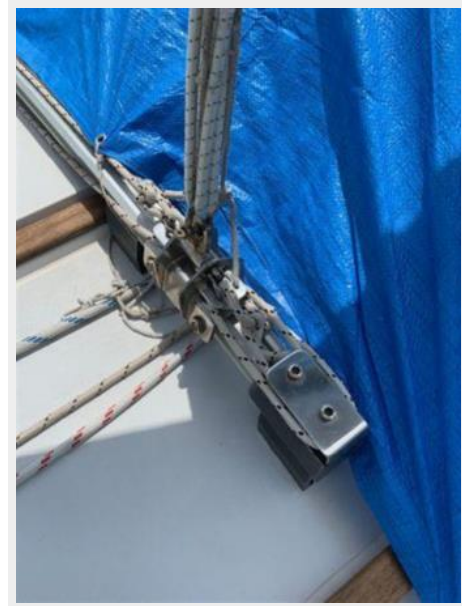
67



68



69



70



71



73



72



74



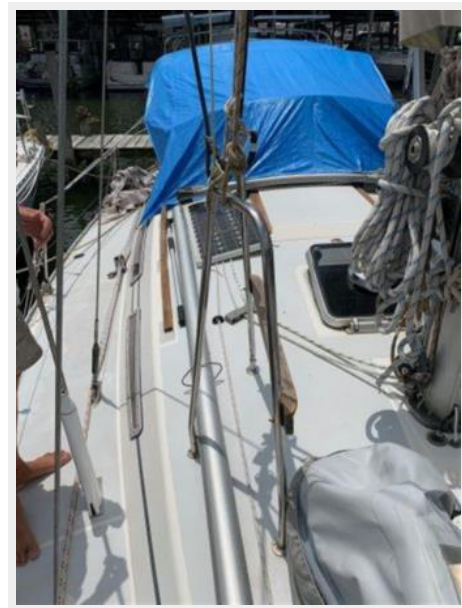
75



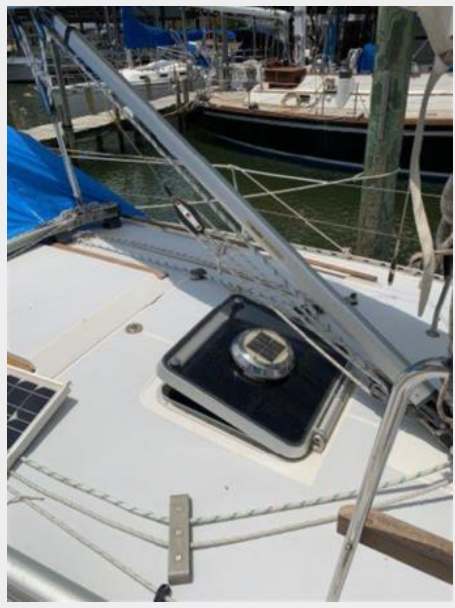
76



77



78



79



80



81



82



83



84



85



86



87



88



89



90



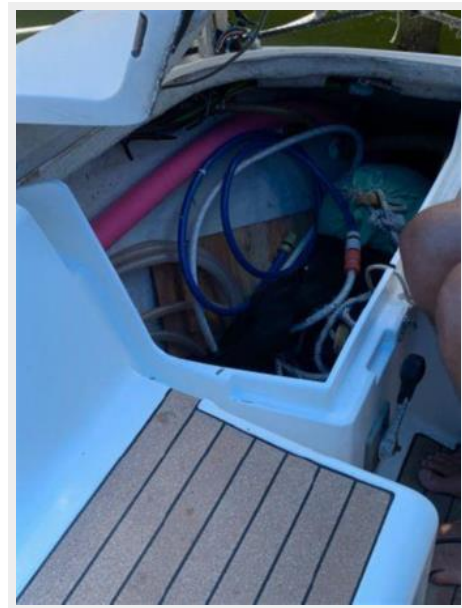
91



92



93



94



95



96



97



98



99



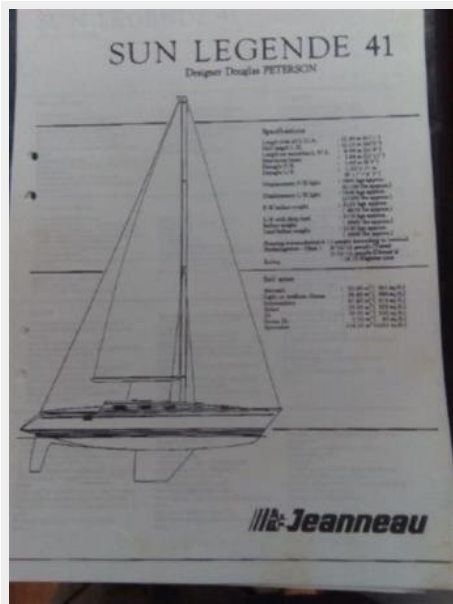
100



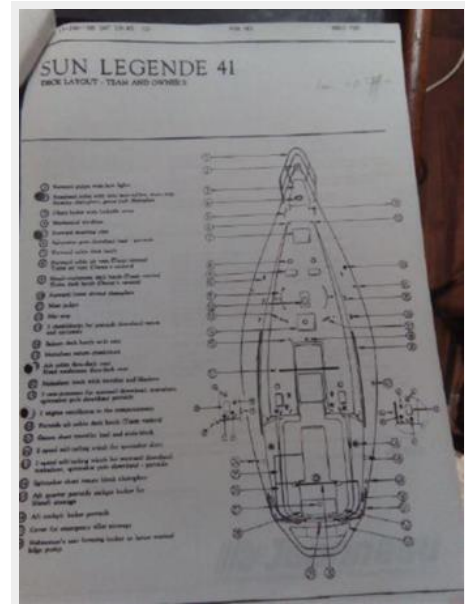
101



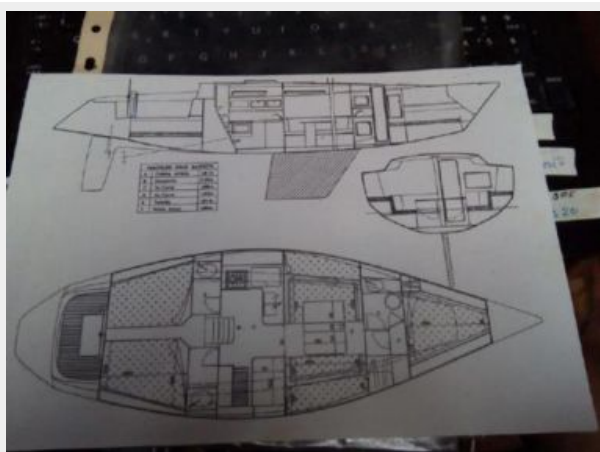
102



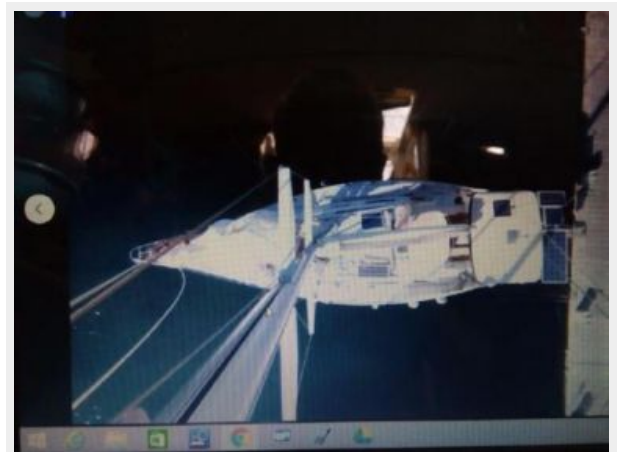
103



104



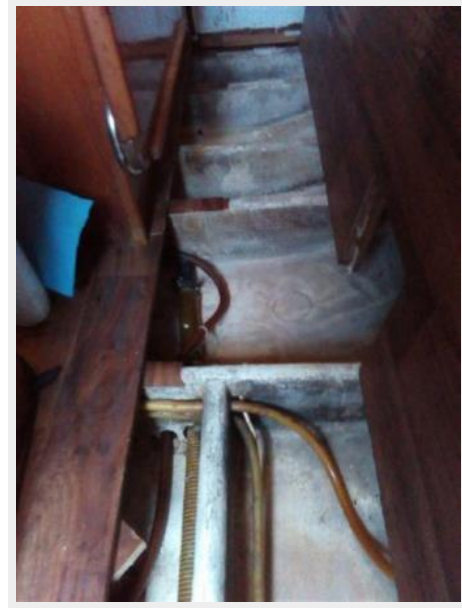
105



106



107



108



109



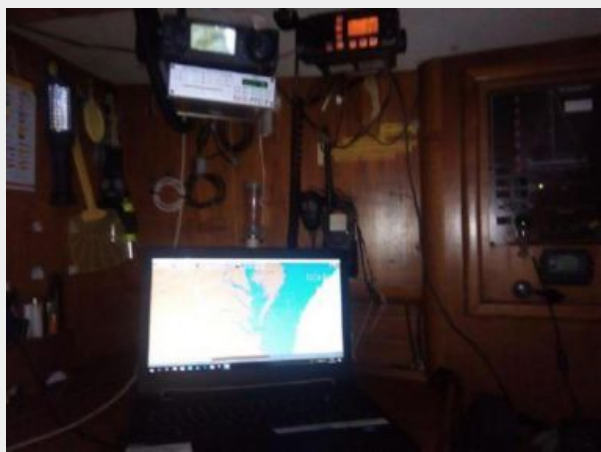
110



111



112



113



114



CONTACTS

Andrey Shestakov, leading yacht broker of the sales department of Shestakov Yacht Sales Inc. Shestakov Yacht Sales Inc., the official representative of the Miami/Fort Lauderdale FL headquarters.

Contact details

Email: andrey@shestakovyachtsales.com

Web: shestakovyachtsales.com/en/

Telephones

USA: +1(954)274-4435

Office hours

Monday – Saturday: **9:00 - 21:00** EDT

Sunday: **closed**

Address



Harbour Towne Marina, 850 NE 3rd St,
STE 213, Dania, FL 33004