

SEAS THE MOMENT — PACIFIC MARINER



Builder: PACIFIC MARINER

Year Built: 2013

Model: Motor Yacht

Price: PRICE ON APPLICATION

Location: United States

LOA: 85' 0" (25.91m)

Beam: 21' 4" (6.50m)

Max Draft: 5' 2" (1.57m)

Cruise Speed: 22 Kts. (25 MPH)

Max Speed: 25 Kts. (29 MPH)

Our experienced yacht broker, Andrey Shestakov, will help you choose and buy a yacht that best suits your needs **SEAS THE MOMENT — PACIFIC MARINER** from our catalogue. Presently, at Shestakov Yacht Sales Inc., we have a wide variety of yachts available on our sale's list. We also work in close contact with all the big yacht manufacturers from all over the world.

If you would like to buy a yacht **SEAS THE MOMENT — PACIFIC MARINER** or would like help answering any questions concerning purchasing, selling or chartering a yacht, please call **+1(954)274-4435**

TABLE OF CONTENTS

TABLE OF CONTENTS	2
SPECIFICATIONS	9
Overview	9
Basic Information	9
Dimensions	9
Speed, Capacities and Weight	9
Accommodations	9
Hull and Deck Information	9
Engine Information	10
DETAILED INFORMATION	11
Highlights	11
Overview	12
Vessel Walkthrough	12
Aft Deck	12
Salon	13
Dining	13
Galley	14
Day Head	14
Pilothouse	14
Master Stateroom	15
Master Head	16
VIP Stateroom/ Starboard	16
VIP Head	17
VIP Stateroom/ Forward	17
VIP Head/ Forward	18
Guest Stateroom/ Port (Twin)	18
Guest Head	18
Captains Quarters	19

Crew Quarters	19
Crew Head	19
Flybridge	20
Navigavtion Electronics	21
Sound Suppression	21
Construction	22
Electrical Systems	22
Mechanical Equipment	23
Swim Platform	24
Exclusions	24
Disclaimer	24
PHOTOS	26
DJI_0062	26
DJI_0061	26
DJI_0065	26
DJI_0059	26
DJI_0087	26
DJI_0086	26
DJI_0082	27
DJI_0081	27
DJI_0079	27
DJI_0027	27
DJI_0020	27
DJI_0084	27
DJI_0119	27
DJI_0032	27
85 Pacific Mariner (64 of 113)	28
DJI_0120	28
DJI_0057	28

85 Pacific Mariner (63 of 113)	28
85 Pacific Mariner (62 of 113)	28
DJI_0028	28
DJI_0034	28
85 Pacific Mariner (75 of 113)	28
85 Pacific Mariner (74 of 113)	29
85 Pacific Mariner (73 of 113)	29
85 Pacific Mariner (65 of 113)	29
85 Pacific Mariner (18 of 113)	29
85 Pacific Mariner (17 of 113)	29
85 Pacific Mariner (32 of 113)	29
85 Pacific Mariner (29 of 113)	29
85 Pacific Mariner (30 of 113)	29
85 Pacific Mariner (27 of 113)	30
85 Pacific Mariner (31 of 113)	30
DJI_0127	30
85 Pacific Mariner (33 of 113)	30
DJI_0023	30
85 Pacific Mariner (72 of 113)	30
85 Pacific Mariner (61 of 113)	31
85 Pacific Mariner (28 of 113)	31
85 Pacific Mariner (26 of 113)	31
85 Pacific Mariner (25 of 113)	31
85 Pacific Mariner (24 of 113)	31
85 Pacific Mariner (23 of 113)	31
85 Pacific Mariner (22 of 113)	31
85 Pacific Mariner (21 of 113)	31
85 Pacific Mariner (20 of 113)	32
85 Pacific Mariner (19 of 113)	32

85 Pacific Mariner (60 of 113)	32
85 Pacific Mariner (59 of 113)	32
85 Pacific Mariner (58 of 113)	32
85 Pacific Mariner (57 of 113)	32
85 Pacific Mariner (56 of 113)	33
85 Pacific Mariner (55 of 113)	33
85 Pacific Mariner (54 of 113)	33
85 Pacific Mariner (53 of 113)	33
85 Pacific Mariner (87 of 113)	33
85 Pacific Mariner (48 of 113)	33
85 Pacific Mariner (47 of 113)	34
85 Pacific Mariner (46 of 113)	34
85 Pacific Mariner (98 of 113)	34
85 Pacific Mariner (97 of 113)	34
85 Pacific Mariner (96 of 113)	34
85 Pacific Mariner (95 of 113)	34
85 Pacific Mariner (94 of 113)	34
85 Pacific Mariner (93 of 113)	34
85 Pacific Mariner (92 of 113)	35
85 Pacific Mariner (91 of 113)	35
85 Pacific Mariner (88 of 113)	35
85 Pacific Mariner (89 of 113)	35
85 Pacific Mariner (90 of 113)	35
85 Pacific Mariner (45 of 113)	35
85 Pacific Mariner (44 of 113)	35
85 Pacific Mariner (39 of 113)	35
85 Pacific Mariner (36 of 113)	36
85 Pacific Mariner (35 of 113)	36
85 Pacific Mariner (38 of 113)	36

85 Pacific Mariner (37 of 113)	36
85 Pacific Mariner (43 of 113)	36
85 Pacific Mariner (42 of 113)	36
85 Pacific Mariner (41 of 113)	36
85 Pacific Mariner (40 of 113)	36
85 Pacific Mariner (76 of 113)	37
85 Pacific Mariner (79 of 113)	37
85 Pacific Mariner (78 of 113)	37
85 Pacific Mariner (83 of 113)	37
85 Pacific Mariner (82 of 113)	37
85 Pacific Mariner (81 of 113)	37
85 Pacific Mariner (80 of 113)	37
85 Pacific Mariner (86 of 113)	37
85 Pacific Mariner (84 of 113)	38
85 Pacific Mariner (85 of 113)	38
85 Pacific Mariner (71 of 113)	38
85 Pacific Mariner (70 of 113)	38
85 Pacific Mariner (69 of 113)	38
85 Pacific Mariner (68 of 113)	38
85 Pacific Mariner (67 of 113)	38
85 Pacific Mariner (66 of 113)	38
DJI_0125	39
DJI_0047	39
DJI_0051	39
DJI_0121	39
DJI_0024	39
85 Pacific Mariner (8 of 113)	39
85 Pacific Mariner (7 of 113)	39
85 Pacific Mariner (6 of 113)	39

85 Pacific Mariner (52 of 113)	40
85 Pacific Mariner (51 of 113)	40
85 Pacific Mariner (50 of 113)	40
85 Pacific Mariner (5 of 113)	40
85 Pacific Mariner (49 of 113)	40
85 Pacific Mariner (2 of 113)	40
85 Pacific Mariner (16 of 113)	40
85 Pacific Mariner (14 of 113)	40
85 Pacific Mariner (10 of 113)	41
85 Pacific Mariner (1 of 113)	41
85 Pacific Mariner (9 of 113)	41
85 Pacific Mariner (3 of 113)	41
85 Pacific Mariner (13 of 113)	41
85 Pacific Mariner (12 of 113)	41
85 Pacific Mariner (11 of 113)	41
85 Pacific Mariner (113 of 113)	41
85 Pacific Mariner (112 of 113)	42
85 Pacific Mariner (111 of 113)	42
85 Pacific Mariner (110 of 113)	42
85 Pacific Mariner (109 of 113)	42
85 Pacific Mariner (108 of 113)	42
85 Pacific Mariner (107 of 113)	42
85 Pacific Mariner (106 of 113)	42
85 Pacific Mariner (105 of 113)	42
85 Pacific Mariner (104 of 113)	43
85 Pacific Mariner (103 of 113)	43
85 Pacific Mariner (102 of 113)	43
85 Pacific Mariner (101 of 113)	43
image0	43

85 Pacific Mariner (100 of 113)	43
CONTACTS	44
Contact details	44
Telephones	44
Office hours	44
Address	44

SPECIFICATIONS

Overview

Basic Information

Category: Motor Yacht

Model Year: 2013

Year Built: 2013

Country: United States

Dimensions

LOA: 85' 0" (25.91m)

Beam: 21' 4" (6.50m)

Max Draft: 5' 2" (1.57m)

Speed, Capacities and Weight

Cruise Speed: 22 Kts. (25 MPH)

Max Speed: 25 Kts. (29 MPH)

Water Capacity: 425 Gallons

Fuel Capacity: 2680 Gallons

Accommodations

Total Cabins: 4

Hull and Deck Information

Hull Material: Fiberglass

Engine Information

Engines: 2

Manufacturer: MTU

Model: 10V2000 M93

Engine Type: Inboard

Fuel Type: Diesel

DETAILED INFORMATION

Highlights

- MTU 10V2000 Series 1500HP M93
- (2) Driving Stations, (5) Docking Stations
- Water Maker (1400GPD)
- Spot Zero (Plumbed Into Water Maker)
- A/SEA Converter (Global Boat)
- A/C Chiller Systems
- Hydraulic Bow/Stern Thruster (PTO on Port & STBD Generator)
- Head Hunter Waste Treatment System For Black Water Tank
- New Swim Platform Teak (May 2020)
- Service Naiad Stabilizers (May 2020)
- Service Davit (May 2020)
- Service Spot Zero (May 2020)
- Service Both Generators (May 2020)
- (4) New Under Water Lights (May 2020)
- Props Tuned (May 2020)
- Shafts Reconditioned (May 2020)
- New Cutlass Bearings (May 2020)
- Re-Galvanize Anchor Chain (May 2020)
- Ceramic Coated Entire Boat (May 2020)
- (2) Coats Of Bottom Paint (May 2020)
- Prop Speed (May 2020)
- 3000 Hour Service Completed

Overview

SEAS THE MOMENT features a four stateroom, plus aft crew arrangement with a separate master stateroom accessed from the main salon. The 85 Mariner's success in the marketplace is also attributed to a large aft deck and fly bridge, walk-around access, and incredible sea keeping ability.

Vessel Walkthrough

SEAS THE MOMENT features a great four stateroom, plus aft crew arrangement of any yacht ever built. The Salon features a comfortable L-shaped settee with chairs, state-of-the-art entertainment, and a large formal Dining area forward and excellent visibility out. The Pilothouse arrangement places both upper & lower helm stations on centerline for exceptional visibility. Port and starboard Pilothouse doors ensure easy access to side decks. The Galley and Day Head are located at Pilothouse level adjacent to the Day Head and aft of the forward-facing dining settee. This Dinette arrangement allows everyone to enjoy the cruise together. All together there are four separate dining areas for unsurpassed versatility and gracious entertaining. The full-beam private Master cabin is accessed by a separate staircase from the main Salon. Forward there are two VIP Staterooms plus a twin bed cabin accessed from the Pilothouse stairway. All of these cabins feature en-suite heads. The Captain's and Crew Quarters are located aft of the full-beam Engine Room, and are easily accessed from both the Aft Deck and the Swim Platform.

Aft Deck

- MarQuipt boarding ladder
- Side boarding gates

- Docking station, (starboard side) with MTU control head and bow thruster control
- Docking windlasses, Lewmar port & starboard
- Custom table with Teak top
- Arm chairs

- Aft Deck wetbar with refrigerator, sink, ice maker, and Corian top
- 22" LCD TV in protected compartment
- Upholstered lounge with Sunbrella fabric

- Teak decking
- Access to crew quarters
- Perlick Refrigerator

- Spiral staircase to Flybridge
- Shore power cords, port & starboard
- CATV and phone inlet with cord
- Courtesy lighting

- LED stainless overhead lighting
- Fresh water wash-down
- Dockside water inlet
- Manual Fire-Suppression pull handle

Salon

- Mahogany timber, satin finish
- Custom sofa with designer covering
- Large storage drawers under sofa
- Custom coffee table
- (2) Occasional chairs
- Stainless steel framed sliding door to Aft Deck with retractable screen
- Windows, tinted, tempered safety glass
- Custom Hunter Douglas Silhouette window blinds
- Wet bar with granite countertop
- Wine cooler
- Ice maker
- Stainless steel sink
- Accent lighting
- Digital room temperature control
- LED lighting with dimmer
- Telephone system, Panasonic
- Art lights with dimmer
- Central vacuum outlet receptacle

Home Theater System:

- 50" Plasma TV on electric lift
- Surround speaker system
- KVH HD7 SAT TV
- Audio/video control receiver
- Distributed audio system: 11 zone
- DSS receiver
- DVD player
- VCR

Dining

- Custom wood table with semi-gloss finish and seating for eight
- Buffet with china & crystal storage
- Place settings for china, silverware & crystal
- LED accent lighting with dimmer

Galley

- Side-by-Side refrigerator with ice/water dispenser
- Stainless steel full-size range with convection oven
- Dishwasher
- Disposal
- Compactor
- Double stainless steel sink
- Grohe single lever faucet, On-Demand hot water
- Granite countertop
- Satin finish Mahogany cabinets
- Lazy Susan
- 22" LCD Flat screen television
- Digital room temperature control
- Hunter Douglas custom window blinds
- LED lighting
- Accent lighting

Day Head

- Vanity with sink and marble countertop
- Mirror
- Headhunter Jet-type Marine Toilet System

- Powered ventilation

- Altman faucet

- On-Demand hot water
- Marble tile flooring

- Designer wall coverings

- Air conditioning outlet
- LED lighting

Pilothouse

- Teleflex Sea Star power-assisted hydraulic steering
- Wood-rimmed stainless steel steering destroyer wheel
- Stidd helm and companion chairs
- DOMETIC 220 VAC defroster in Pilothouse console
- Electronic room heater, 240VAC, 750Watt

- 12V Power outlet
- Chart light with red lens
- (3) Chart drawers
- Fabrica luxury carpeting overlay
- Custom table
- Custom flooring
- Raised settee with designer fabrics & built-in drawer storage
- Stairways to Flybridge and to lower level accommodations

- Digital room temperature control
- Distributed audio with volume control
- Stereo speakers connected to main system with volume control
- Tempered windshield glass with frameless flush design
- Heavy duty windshield wiper/washer with intermittent operation, self-parking
- Windshield Defog System
- Windshield cover
- V-Cool
- Smoke detector
- LED Lighting with dimmer

Master Stateroom

- Large full-beam suite with private entry
- King-size berth, innerspring pillow-top mattress
- Custom ceiling overhead
- Nightstands with light switches and drawer storage
- Built-in dresser & make-up desk
- Built-in dresser starboard
- Custom desk with bookshelves, storage and chair
- (2) Cedar-lined lighted hanging lockers
- 32" LCD Flat screen TV with DVD and DSS receiver
- Distributed audio with volume control
- SIMRAD digital depth sounder repeater
- Telephone
- (2) Telephone outlets
- Digital room temperature control
- Electric room heater, 220VAC, 750Watt

- LED Lighting with dimmer
- Accent lighting
- (2) Reading lights
- (4) Opening port lights
- Smoke detector
- Custom Hunter Douglas blinds
- Designer spread & throw pillows

Master Laundry:

- Whirlpool stackable washer/dryer
- Storage cabinet

Master Head

- Marble countertop with two sinks
- Mirrored vanity with storage
- Marble tile flooring
- Altman dual-lever faucets
- On-Demand hot water
- Headhunter Royal Flush marine toilet system
- Powered ventilation
- Shower enclosure with safety-glass surround
- Pressure balanced shower valve, Altman with handheld sprayer
- Tempered glass shower door
- Towel storage cabinet
- Full-length mirror on door
- Distributed audio with volume control
- AC Outlet, GFCI protected
- LED Lighting, 24VDC
- Opening port light
- Custom Hunter Douglas blinds

VIP Stateroom/ Starboard

- Queen size berth, innerspring pillow-top mattress
- Designer spread and throw pillows
- Built-in drawers under berth
- Cedar-lined hanging locker
- (2) Swing arm reading lights
- 20" LCD Flat screen TV

- DVD Player
- DSS receiver
- Distributed audio system with volume control
- Accent lighting
- Telephone
- Digital room temperature control
- Electric room heater, 240VAC, 750 Watt

VIP Head

- Marble countertop w/ Kohler sink
- Mirrored vanity with storage
- Marble tile flooring
- Altman faucet
- On-demand hot water
- Headhunter Royal Flush Marine Toilet System
- Powered ventilation
- Shower with safety-glass door
- Pressure balanced shower valve
- Air conditioning outlet
- LED lighting

VIP Stateroom/ Forward

- Queen size berth, innerspring pillow-top mattress
- Designer spread & throw pillows
- Built-in drawers under berth
- Cedar-lined lighted hanging locker
- 15" LCD Flat screen TV
- Combo DVD/VCR
- DSS Receiver
- Distributed audio & volume control
- LED Lighting
- Accent lighting
- (2) Swing arm reading lights
- Telephone
- Digital room temperature control
- Electric room heater, 240VAC, 750Watt
- Ventilation hatch above berth with screen and privacy cover
- (2) Opening port lights
- Custom Hunter Douglas blinds
- Smoke detector

VIP Head/ Forward

- Marble countertop with Kohler sink
- Mirrored vanity with storage
- Marble tile flooring
- Altman faucet
- Headhunter Royal Flush Marine Toilet System
- Powered ventilation
- Shower with safety glass door
- Pressure balanced shower valve
- Air conditioning outlet
- LED Lighting
- Opening port light with screen

Guest Stateroom/ Port (Twin)

- Twin size Pullman berths
- Custom designer spread and throw pillows
- Cedar-lined, lighted hanging locker
- Built-in drawers under berths

- 15" LCD Flat screen TV
- DVD Player
- DSS receiver
- Distributed audio w/volume control
- LED Lighting
- Accent lighting
- (2) Reading lights
- Digital room temperature control
- Electric room heater, 240VAC, 750Watt
- Opening port light
- Custom Hunter Douglas blinds
- Smoke detector

Guest Head

- Marble countertop with Kohler sink
- Mirrored vanity with storage
- Marble tile flooring
- Altman faucet
- Headhunter Royal Flush Marine Toilet System
- Powered ventilation

- Shower with safety glass door
- Pressure balanced shower valve
- Air conditioning outlet
- LED Lighting
- Opening port light with screen

Captains Quarters

- Queen-size berth
- Designer spread & throw pillows
- (2) Sets of deluxe linens
- Built-in drawers under berth
- Cedar-lined, lighted hanging locker
- TV with DVD/DSS receiver
- LED Lighting
- Reading light
- Opening port light with screens
- Custom Hunter Douglas blinds

Crew Quarters

- SIMRAD digital depth sounder repeater
- 15" LCD Flat screen TV, DVD and DSS receiver
- Distributed audio system with volume control
- Digital room temperature control
- Refrigerator
- Full Size Freezer
- Stainless steel sink
- Washer/dryer

Crew Head

- Shower
- Vanity with Corian counter, sink, mirror and storage
- Headhunter Jet-type marine toilet system with 17 gal. holding tank
- Holding tank level indicator
- Part storage cabinet
- Access to Engine Room

- Main AC Panel
- ICOM VHF radio repeater
- Systems monitor

Flybridge

- Fully-equipped control station
- MTU Instruments & Controls
- Premium electronic package
- Furuno Navnet repeaters
- Autopilot remote
- ICOM M602 VHF radio
- Bow thruster control
- SIMRAD digital depth and speed gauges
- Ritchie 5" magnetic compass
- Distributed audio system with volume control
- Electric BBQ grill
- Refrigerator with ice maker
- Sink with single lever faucet
- (3) Stidd helm & companion seats
- Stainless steel steering wheel
- Hydraulic steering, TeleFlex Seastar, power-assisted
- Custom curved windshield with stainless steel frame
- 1700 Lb. Nautical Structures hydraulic davit with power booming and rotation
- Upholstered settee starboard with storage below
- Stainless steel handrails
- Antenna arch
- Floodlights
- Courtesy lighting
- Stairs to Pilothouse and Aft Deck
- Companionway cover
- Canvas cover
- Switlik 10-person life raft
- Hot tub, Jacuzzi spa
- Fiberglass hardtop
- Docking Stations (port & starboard) with MTU Control head & bow thruster controls (on Upper Deck)

Navigation Electronics

- MTU Electronic engine instruments
- MTU Electronic controls with back-up system
- Ship's computer with Nobeltec VNS (Visual Navigation Suite)
- XM Weather overlay interfaced with Autopilot
- Furuno Navnet 3D black box system
- (3) 19" NEC LCD Monitors at lower helm
- Furuno Navnet MFDBB digital HD 72nm radar with dual range display and ARPA radar repeated on Flybridge with 6' scanner array
- Furuno Navnet DFF1 digital color sounder display on Navnet system
- Furuno Navnet C-map plotter with GPS
- Furuno GP37 GPS and Navnet Black box
- (3) Furuno Navnet 3D MFD12 monitors on Flybridge
- Furuno RD30 System displays wind speed/direction, depth and vessel speed on instruments in the Pilothouse, Flybridge, Crew and Master Stateroom. Sensors include PB100 solid state weather sensor with GPS and Smart depth/speed transducer
- Loud Hailer integrated with Pilothouse VHF radio and flybridge switch in PH
- Kahlenberg dual trumpet air horns
- ICOM® M604 VHF radio in Pilothouse, Flybridge and one command mic in Crew Quarters
- SIMRAD AP28 in Pilothouse and AP24 on Flybridge. Wireless remote with connections at both stations
- Naiad Datum stabilizer controls
- Naiad bow thruster control
- Ritchie Globe Master FB500 on Pilothouse and flybridge
- Elbex (3) 12VDC hi-resolution color, pan/tilt cameras on the exterior, and pan/ tilt camera in the engine room
- Generator control panels
- Manual Fire-Suppression pull handle
- AC Distribution panel
- (2) ACR Spotlights
- Panasonic 8-station digital phone system. All stations have speaker phones for intercom and paging. Phone system is connected to Satellite, Cell and Shore Phones for voice lines throughout. Port and Starboard shore connection is provided aft with a 50 ft. combo telephone / CATV shore cord
- Hewlett Packard printer/Fax
- Satellite TV System; (9) satellite receivers: Salon, Aft Deck, Galley, Master Stateroom, VIP Stateroom, port and starboard Guest Staterooms, Captain and Crew Quarters
- Internet connectivity thru Syrens Wi-Fi receiver/router
- Telular GSM Cellular Phone System
- Antenna on mast, 12VDC Amplifier

Sound Suppression

- 3M Thinsulate insulation in living areas
- Sound deadening tiles in strategic locations
- Inline silencers on air conditioning ducts
- Soundown double density sound foam with barrier in engine room
- High-density foam cored engine beds
- Generator sound shields with sound attenuation kits
- All pumps and motors installed on isolation mounts
- Lift mufflers and separators on generators with underwater discharge
- Generators installed on double isolation mounts
- Insulation on engine mufflers
- Sound absorbing pads under carpets
- Underwater engine exhaust with vectored cowl
- Underwater discharge air conditioning system

Construction

- Composite cored hull bottom and topsides
- One-piece fully cored unitized deck
- Cored fiberglass stringers
- (5) Composite structural bulkheads
- Anti-fouling paint, Interlux Micron- Extra (black)
- Epoxy barrier coat, Interprotect 2000-E
- Vinylester resin barrier coat
- UV resistant white gel coat

Electrical Systems

- Twin 30kW 1800 rpm Northern Lights 220VAC single phase generators
- (2) 100 Amp – 240VAC single-phase shore power feeds
- (2) Glendenning Cablemaster cord reels with 75' cords
- (2) 24 KVA Asea 50/60 cycle shore power converters
- Distribution panels are fitted with magnetic breakers, back-lit labels with LED indicator lights in pilothouse
- Main distribution panel is located in crew area. Functional split buss design, with flexible AC source selection, and power management
- AGM Type batteries. Two banks of 8-D, batteries wired in series for starting main engines (total of two), (8) for ship's service, (1) GRP 27 per generator starting
- Heavy-duty battery switches with paralleling switch
- Battery Chargers include two 60 amp 24VDC for ship's service and engine start batteries,

- (1) 100A built into inverter for ship's service and (1) 20-amp 12VDC for generator batteries
- 4500 Watt Inverter with built-in 100A smart charger. Supplies power to all entertainment equipment, refrigerators, microwaves and strategic outlets allowing quiet ship operation
- 12 Volt System provides power to 12VDC equipment
- DC to DC Converter, distribution panel with volt and amperage gauges
- Bonding system
- 24 VDC Fluorescent engine room lighting
- 24 VDC Navigation lights
- 24 VDC Bilge pumps with float switches
- 110 VAC Auxiliary bilge pump with manifold system
- Telephone and CATV inlet with 50' cable
- Courtesy lighting
- Battery paralleling switch
- (10) 8D Gel cell batteries; (2) starting, (8) house
- (2) GRP 27 AGM batteries for generators
- Wiring, tinned copper with labels
- Receptacles, 120 VAC GF-CI all-protected
- Underwater lights (4), metal-Halide

Mechanical Equipment

- (2) MTU Common Rail 10V2000 CRM93-Series Engines with 3050 hrs. rated at 1,500 hp each
- Twin 30kW, 1800 rpm Northern Lights with double compound mounts both generators have remote start/stop in Pilothouse (port gen hours: 7,339; starboard gen hours: 7,223)
- Vessel equipped with 18,000 BTU, make-up air system that replaces vessel's air twice an hour
- Triple compressor 15 ton chilled water Air Conditioning System with heat and soft start
- Naiad Model #302 with 9 sq. ft. fins, (1) Datum Digital Adaptive Stabilizer Control on Flybridge and (1) Pilothouse LCD control panel with fin position icons, sensitivity controls, and individual function screens with context sensitive push buttons
- Naiad 38HP Hydraulic with 5-station controls
- Smartline electronic controls and displays, trolling valves, and underwater exhaust
- PTO and hydraulic pump installed on the port generator for bow Thruster
- 2nd PTO Bow Thruster
- Naiad 38HP Hydraulic with 5-station controls
- 2,325 US Gallons fuel tanks with sight gauges
- Dual Racor® 75/1000 fuel filters for each main engine
- Single Racor 75/500 for each generator
- Fireboy® GA-series Fire Suppression System with manual/automatic controls
- Delta T 220V system for Engine Room ventilation

- Teleflex SeaStar hydraulic power steering
- Cast bronze rudders with 3 1/2" stainless stocks
- Tide Marine bearings and seals
- 36" x 35.5" Nibral 5-blade custom Propellers
- 3" 22-H.S. Propeller shafts
- 8 Rule 3700 gph bilge pumps with automatic float switches
- 110VAC air compressor in the engine room
- 55-Gallon new lube oil tank with electric pump connected to engines and generators for changing oil
- Dedicated pump for old oil removal
- 24 Volt high pressure freshwater pump with (2) 220VAC pumps, with expansion tank
- 316L Stainless steel freshwater tank with capacity of 425 gallons
- (1) Sea Recovery® 1,400 gallon-per-day water maker
- 3M M3P Dual water filter system with parallel manifold system
- (2) 28-Gallon hot water heater, with on-demand hot water system
- Transom hot and cold shower
- Freshwater wash down at Foredeck, Flybridge, Engine Room and Aft Deck
- Forward & aft sump tank have automatic sump pumps for below deck gray water
- Headhunter Waste Treatment system for blackwater tank, Tidal Wave® 200B, Type-II MSD, USCG-Approved. Tank is electronically monitored and has an approx. capacity of 200 gallons
- Spot Zero Wash-Down System

Swim Platform

- Retractable swim ladder
- Stainless steel removable staple rails
- Hot & cold shower
- Stairways to aft deck
- Access to crew quarters through Freeman watertight door
- Storage locker
- Cleats

Exclusions

Owner's personal belongings.

Disclaimer

The Company offers the details of this vessel or yacht in good faith but cannot guarantee or warrant the accuracy of this information nor warrant the condition of the vessel. A buyer should instruct his representatives, agents, or his surveyors, to investigate such details as the buyer desires validated. This vessel or yacht is offered subject to prior sale, price change, or withdrawal without notice.

PHOTOS

DJI_0062



DJI_0061



DJI_0065



DJI_0059



DJI_0087



DJI_0086



DJI_0082



DJI_0081



DJI_0079



DJI_0027



DJI_0020



DJI_0084



DJI_0119



DJI_0032



85 Pacific Mariner (64 of 113)



DJI_0120



DJI_0057



85 Pacific Mariner (63 of 113)



85 Pacific Mariner (62 of 113)



DJI_0028



DJI_0034



85 Pacific Mariner (75 of 113)



85 Pacific Mariner (74 of 113)



85 Pacific Mariner (73 of 113)



85 Pacific Mariner (65 of 113)



85 Pacific Mariner (18 of 113)



85 Pacific Mariner (17 of 113)



85 Pacific Mariner (32 of 113)



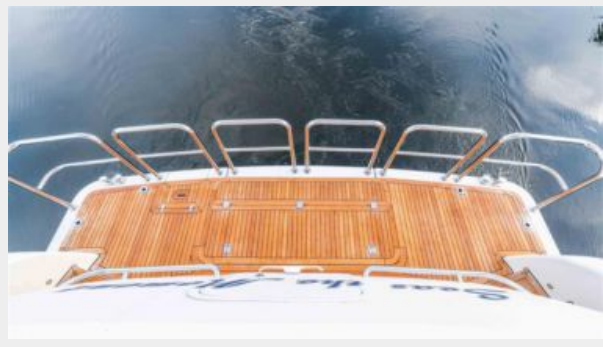
85 Pacific Mariner (29 of 113)



85 Pacific Mariner (30 of 113)



85 Pacific Mariner (27 of 113)



85 Pacific Mariner (31 of 113)



DJI_0127



85 Pacific Mariner (33 of 113)



DJI_0023



85 Pacific Mariner (72 of 113)



85 Pacific Mariner (61 of 113)



85 Pacific Mariner (28 of 113)



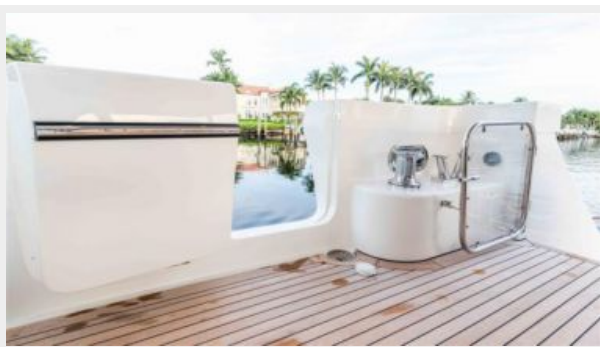
85 Pacific Mariner (26 of 113)



85 Pacific Mariner (25 of 113)



85 Pacific Mariner (24 of 113)



85 Pacific Mariner (23 of 113)



85 Pacific Mariner (22 of 113)



85 Pacific Mariner (21 of 113)



85 Pacific Mariner (20 of 113)



85 Pacific Mariner (19 of 113)



85 Pacific Mariner (60 of 113)



85 Pacific Mariner (59 of 113)



85 Pacific Mariner (58 of 113)



85 Pacific Mariner (57 of 113)



85 Pacific Mariner (56 of 113)



85 Pacific Mariner (55 of 113)



85 Pacific Mariner (54 of 113)



85 Pacific Mariner (53 of 113)



85 Pacific Mariner (87 of 113)



85 Pacific Mariner (48 of 113)



85 Pacific Mariner (47 of 113)



85 Pacific Mariner (46 of 113)



85 Pacific Mariner (98 of 113)



85 Pacific Mariner (97 of 113)



85 Pacific Mariner (96 of 113)



85 Pacific Mariner (95 of 113)



85 Pacific Mariner (94 of 113)



85 Pacific Mariner (93 of 113)



85 Pacific Mariner (92 of 113)



85 Pacific Mariner (91 of 113)



85 Pacific Mariner (88 of 113)



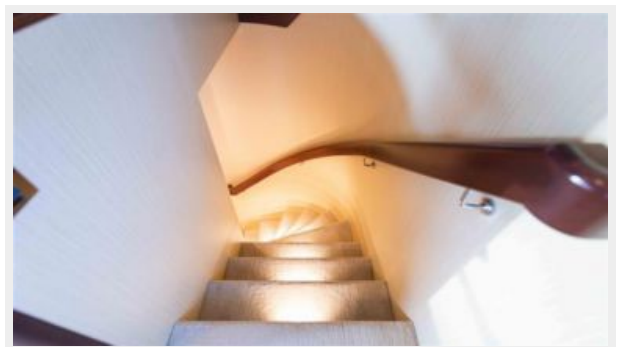
85 Pacific Mariner (89 of 113)



85 Pacific Mariner (90 of 113)



85 Pacific Mariner (45 of 113)



85 Pacific Mariner (44 of 113)



85 Pacific Mariner (39 of 113)



85 Pacific Mariner (36 of 113)



85 Pacific Mariner (35 of 113)



85 Pacific Mariner (38 of 113)



85 Pacific Mariner (37 of 113)



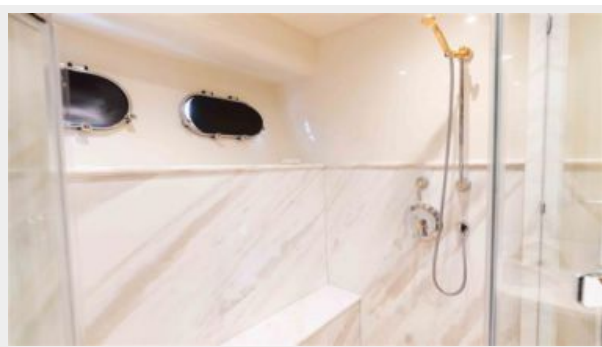
85 Pacific Mariner (43 of 113)



85 Pacific Mariner (42 of 113)



85 Pacific Mariner (41 of 113)



85 Pacific Mariner (40 of 113)



85 Pacific Mariner (76 of 113)



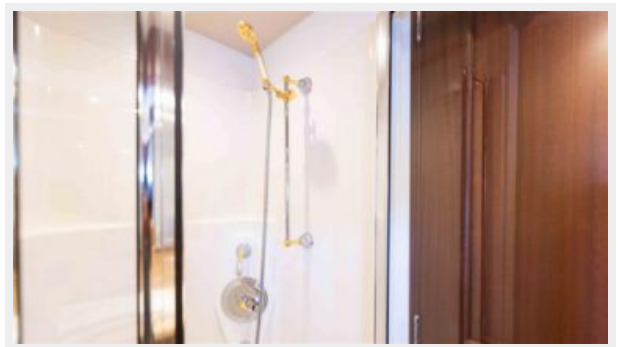
85 Pacific Mariner (79 of 113)



85 Pacific Mariner (78 of 113)



85 Pacific Mariner (83 of 113)



85 Pacific Mariner (82 of 113)



85 Pacific Mariner (81 of 113)



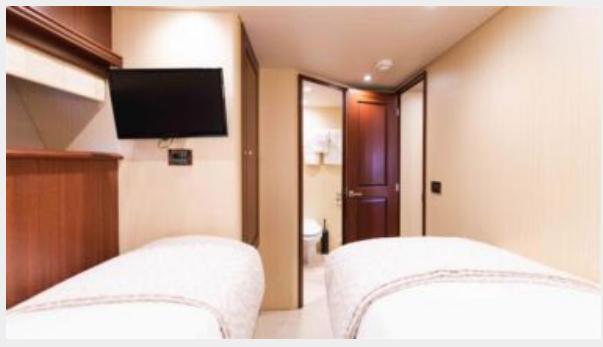
85 Pacific Mariner (80 of 113)



85 Pacific Mariner (86 of 113)



85 Pacific Mariner (84 of 113)



85 Pacific Mariner (85 of 113)



85 Pacific Mariner (71 of 113)



85 Pacific Mariner (70 of 113)



85 Pacific Mariner (69 of 113)



85 Pacific Mariner (68 of 113)



85 Pacific Mariner (67 of 113)



85 Pacific Mariner (66 of 113)



DJI_0125



DJI_0047



DJI_0051



DJI_0121



DJI_0024



85 Pacific Mariner (8 of 113)



85 Pacific Mariner (7 of 113)



85 Pacific Mariner (6 of 113)



85 Pacific Mariner (52 of 113)



85 Pacific Mariner (51 of 113)



85 Pacific Mariner (50 of 113)



85 Pacific Mariner (5 of 113)



85 Pacific Mariner (49 of 113)



85 Pacific Mariner (2 of 113)



85 Pacific Mariner (16 of 113)



85 Pacific Mariner (14 of 113)



85 Pacific Mariner (10 of 113)



85 Pacific Mariner (1 of 113)



85 Pacific Mariner (9 of 113)



85 Pacific Mariner (3 of 113)



85 Pacific Mariner (13 of 113)



85 Pacific Mariner (12 of 113)



85 Pacific Mariner (11 of 113)



85 Pacific Mariner (113 of 113)



85 Pacific Mariner (112 of 113)



85 Pacific Mariner (111 of 113)



85 Pacific Mariner (110 of 113)



85 Pacific Mariner (109 of 113)



85 Pacific Mariner (108 of 113)



85 Pacific Mariner (107 of 113)



85 Pacific Mariner (106 of 113)



85 Pacific Mariner (105 of 113)



85 Pacific Mariner (104 of 113)



85 Pacific Mariner (103 of 113)



85 Pacific Mariner (102 of 113)

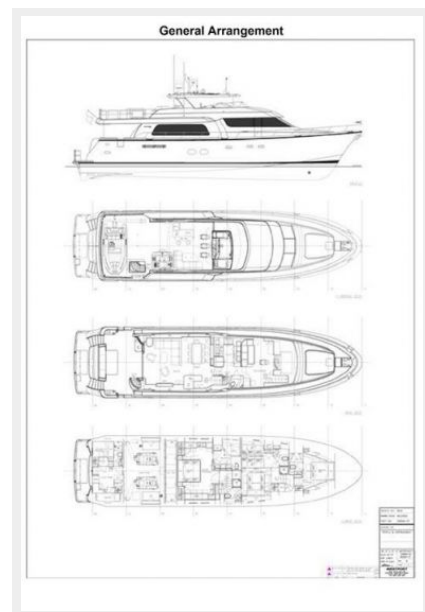


85 Pacific Mariner (101 of 113)



image0

85 Pacific Mariner (100 of 113)



CONTACTS

Andrey Shestakov, leading yacht broker of the sales department of Shestakov Yacht Sales Inc. Shestakov Yacht Sales Inc., the official representative of the Miami/Fort Lauderdale FL headquarters.

Contact details

Email: andrey@shestakovyachtsales.com

Web: shestakovyachtsales.com/en/

Telephones

USA: +1(954)274-4435

Office hours

Monday – Saturday: **9:00 - 21:00** EDT

Sunday: **closed**

Address



Harbour Towne Marina, 850 NE 3rd St,
STE 213, Dania, FL 33004