

PREAMBLE — ISLAND PACKET YACHTS



Судостроитель:
ISLAND PACKET YACHTS

Год постройки: 1998

Модель: Крейсерская яхта

Цена: ЦЕНА ЯХТЫ ПО ЗАПРОСУ

Местонахождение: United States

Длина общая: 38' 5" (11.71m)

Ширина: 12' 2" (3.71m)

Макс. осадка: 4' 6" (1.37m)

Купить Preamble — ISLAND PACKET YACHTS а также выбрать подходящую вам яхту из нашего каталога яхт вам поможет опытный яхтенный брокер Андрей Шестаков. На сегодняшний день компания Shestakov Yacht Sales Inc. имеет большое количество яхт в собственном списке продаж, а также тесно сотрудничает со всеми крупными яхтенными производителями по всему миру. Для того чтобы купить яхту Preamble — ISLAND PACKET YACHTS а также проконсультироваться по любому вопросу связанному с покупкой, продажей, чартером яхт позвоните по телефону **+7(918)465-66-44**.

ОГЛАВЛЕНИЕ

ОГЛАВЛЕНИЕ	2
ХАРАКТЕРИСТИКИ	4
Обзор	4
Основная информация	4
Размеры	5
Скорость, вместимость и масса	5
Размещение	5
Корпус и палуба	5
Информация о двигателе	5
ПОДРОБНОЕ ОПИСАНИЕ	6
Overview	6
Исключения	7
Отказ от ответственности	7
ФОТОГРАФИИ	9
2	9
3	9
5	9
4	9
6	10
7	10
8	10
9	10
10	10
11	10
12	11
13	11
14	11
15	11

16	11
17	11
18	12
19	12
20	12
21	12
22	12
23	12
25	13
24	13
26	13
27	13
28	13
29	13
30	14
31	14
32	14
33	14
КОНТАКТЫ	15
Контактная информация	15
Телефоны	15
Время работы	15
Адрес	15

ХАРАКТЕРИСТИКИ

Обзор

BRAND NEW LISTING 5/15/20 - SINGLE OWNER PREAMBLE is a well equipped Island Packet 37 with tremendous flexibility as a ocean passage maker or local cruising. On the hard at Port Annapolis for only a few short weeks, she is ready for her new owner to splash her again! More info to come, priced to sell, owner has moved on.

- 2020 New Starting and House Batteries
- 2019 New Transmission
- 2019 New Marine air ac/reverse cycle heat
- 2017 Stack Pack
- 2017 Garmin Chart Plotter
- 2017 Refrigeration unit
- 2010 Sails in good shape. Cutter rig, Genoa and staysail on roller furlers, full batten mainsail
- Yanmar 3 cyl diesel 38 hp 3200 hrs.
- Regularly maintained, runs clean.
- "Older" Autopilot, depth, speed, log, wind, radar, all older.
- Two anchors- 44 lb claw on 200' chain, 35 lb delta on 50' chain, 200' rode Manual, two speed windlass
- 1998 Island Packet 37- last of that model built. Original owners.
- Boat is 38 1/2' LOA, 12' 2" beam, 4 1/2' draft, weighs 18,500 lbs empty.
- Needs new Dodger (estimate in hand for replacement to match awning)
- Seller suggests replacing the head (commode only - estimate forthcoming)
- Dinghy in photos does not convey

Основная информация

Тип судна: Крейсерская яхта

Модельный год: 1998

Год постройки: 1998

Страна: United States

Размеры

Длина общая: 38' 5" (11.71m)

Длина по ватерлинии: 36' 5" (11.10m)

Ширина: 12' 2" (3.71m)

Макс. осадка: 4' 6" (1.37m)

Трапы: 49' 6" (15.09m)

Длина привального бруса: 37' 0"
(11.28m)

Скорость, вместимость и масса

Водоизмещение: 18500 Pounds

Вместимость воды: 90 Gallons

Вместимость сточного бака: 16 Gallons

Объем топливного бака: 90 Gallons

Размещение

Всего кают: 2

Всего коек: 4

Всего ком. состава: 1

Корпус и палуба

Материал корпуса: Fiberglass

Отделка корпуса: Aluminum

Дизайнер корпуса: Island Packet Yachts

Дизайнер экстерьера: Robert K. Johnson

Информация о двигателе

Двигатели: 1

Производитель: Yanmar

Тип двигателя: Inboard

Тип топлива: Diesel

ПОДРОБНОЕ ОПИСАНИЕ

Overview

Accommodations Starting forward is a comfortable V-berth with insert. There are two drawers underneath, two cubbies and a number of deep storage areas under the bed. There are two opening ports and an overhead hatch to provide light and ventilation. Next aft to port is the head with stainless steel sink, hot and cold pressure water, separate shower seat and marine toilet with holding tank. Opposite the head to starboard is a cedar-lined hanging locker. The main salon is next aft with facing settees port and starboard with the port settee converting to a double bunk. Behind and underneath these settees are huge amounts of storage.....always a plus for the cruiser or weekender alike. The saloon also boasts Island Packet's signature bulkhead mounted table that opens to reveal hidden storage and accommodate guests for dinner. At the aft end of the port settee is the aft facing nav table. At the aft end of the starboard settee is a drop down table that can be used as a handy place to serve cocktails or, additional prep area for the galley. The galley is located to starboard of the companionway and is a safe, convenient area for food prep. To port of the companionway is the entrance to the separate aft cabin. Screens for all ports, hatches and companionway Galley

- Large wrap-around design w/Formica@ surfaces, teak sea rails on all edges, flip up counter extension. Great design for the cook to prepare meals at sea or dockside.
- Large stainless steel sink with hot and cold pressure water and manual whale for fresh water;
- Gimballed three burner Princess LPG stove w/oven - stainless steel deluxe safety type, lift off cover, stainless steel guard rail w/harness hooks. Pot and pan locker underneath.

Sails and Rigging

- Fully Battened Mainsail main with Mack Pack system with Harken Battcars
- Furling 130% Genoa on Harken Roller Furler

What Island Packet has to say about the 37 The Island Packet 37 offers sparkling performance, superior safety and seakeeping, ease of handling and spacious and livable accommodations. Island Packet Yachts' exclusive Full Foil Keel unifies the performance attributes of modern hull and foil designs. This design brings numerous benefits to the cruising sailor: superior protection from damage or fouling of both prop and rudder, an integral hull and keel structure for the strongest possible unified construction, a moderate draft with exceptional stability allowing shallow water gunkholing or worldwide voyaging, and spirited performance capabilities. On deck, the well-engineered layout provides the safety and security needed in offshore conditions through full-length cabin top handrails, wide unobstructed side decks, and recessed foredeck with bulwarks. The integral bowsprit- anchor platform increases sail area, improves sheeting

angles for enhanced performance, while providing ready stowage and immediate access for two anchors and their tackle. The nearly 8-foot long cockpit has full-length contoured seats offering plenty of room for both comfortable sitting or stretching out. A premium, console-mounted rack and pinion steering system provides the sensitive feel and rugged reliability available only from a direct-gear steering system. A rudder shaft control arm and interior mounting shelf are provided to facilitate the installation of an autopilot. The raised bridgedeck, lock-in companionway boards, bilge pump mount adjacent to the helm and large cockpit scuppers further ensure safety at sea. The standard cutter rig has furling systems on both the genoa and self-tending staysail. The skipper has a variety of sail combinations available that are easily adaptable to maximize comfort, safety and performance over a wide range of wind and sea conditions. Belowdecks, convenient to both the cockpit and salon, yet out of companionway traffic, the galley is host to a number of design details that will make it the delight of the onboard chef. The main salon has a fold-away table, mounted on the main cabin bulkhead to provide an unobstructed salon area when the table is not needed. A pull-out panel in the L-shaped port settee converts this area into an extra double berth. The navigation station features a large hinged table with a generous stowage tray underneath. The private forward stateroom features a wide, 6-foot 6-inch V-berth with generous storage space. The enclosed aft stateroom features a double berth and convenient upholstered dressing seat. The engine is conveniently located in an easily accessed compartment, complete with premium, lead-lined sound insulation and integrally molded drip pan. Overhead interior hand rails, bulkhead hand grips and an easily maintained, slip-resistant cabin sole in the high-traffic areas helps provide sure-footed movement while underway. A harmonious blend of tasteful designer surfaces, premium fabrics, and meticulously hand-crafted, oiled teak joinery work conveys a sense of style and comfort, while a host of thoughtful details, such as courtesy lights with a companionway switch, make the 37's interior exceptionally livable and practical. Advanced construction technology utilizing custom blended resins, 100 per cent hand-laminated, premium knitted biaxial and triaxial fiberglass reinforcements and Island Packet's exclusive PolyClad hull gelcoat system combine to provide vastly superior resistance to impact, puncture resistance and osmotic blistering. Deck laminates are engineered for high strength with reduced weight utilizing PolyCore. An engineered interior grid system and reinforced fiberglass structure joins with the hull to form a unit structure of immense strength and durability.

Исключения

При продаже яхты исключаются личные вещи владельца.

Отказ от ответственности

Компания предоставляет описание судна или яхты добросовестно, но не может гарантировать точность этой информации, а также не ручается за техническое состояние. Покупатель должен проинструктировать своих агентов или оценщиков исследовать представленную информацию более подробно, по собственному желанию. Продажа судна или яхты, изменение цены или снятие с продажи будет происходить без

предварительного уведомления.

ФОТОГРАФИИ

2



3



4



5



6



7



8



9



10



11



12



13



14



15



16



17



18



19



20



21



22



23



24



25



26



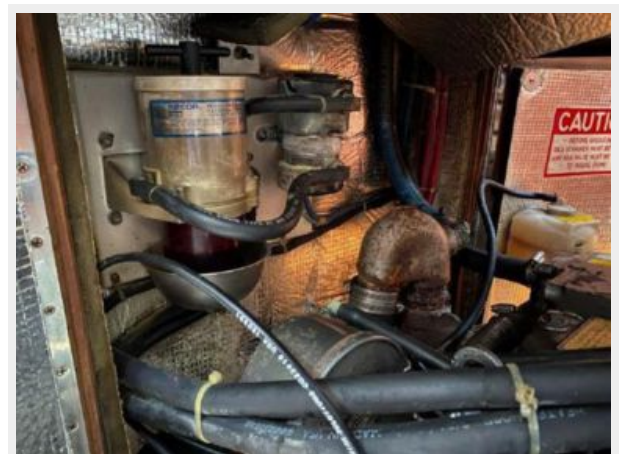
27



28



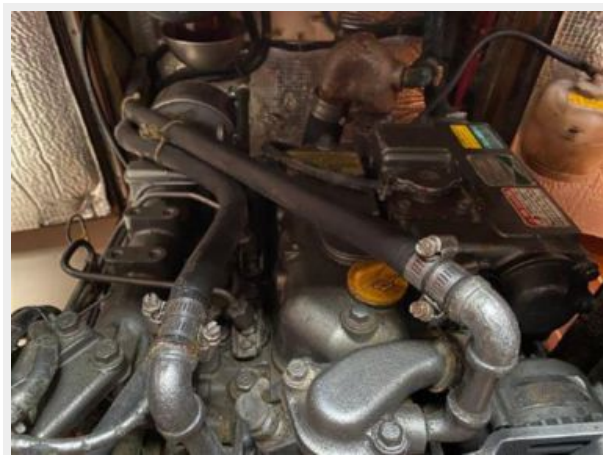
29



30



31



32



33



КОНТАКТЫ

Андрей Шестаков (Andrey Shestakov) – ведущий яхтенный брокер отдела продаж яхт и судов компании Shestakov Yacht Sales Inc. Официальный представитель Shestakov Yacht Sales Inc. для русскоговорящих клиентов в центральном офисе компании в Майами/Форт Лодердейл/Флорида/США.

Контактная информация

Email: andrey@shestakovyachtsales.com

Web: shestakovyachtsales.com

Телефоны

Краснодарский край: **+7(918)465-66-44**

США, Майами, Флорида: **+1(954)274-4435**

Время работы

Понедельник – Суббота: **9:00 - 21:00**
EDT

Воскресенье: **Закрито**

Адрес



Harbour Towne Marina, 850 NE 3rd St,
STE 213, Dania, FL 33004