

VALIANT — TARTAN



Судостроитель: TARTAN

Год постройки: 2008

Модель: Крейсерская яхта

Цена: **ЦЕНА ЯХТЫ ПО ЗАПРОСУ**

Местонахождение: United States

Длина общая: 37' 0" (11.28m)

Ширина: 12' 8" (3.86m)

Мин. осадка: 5' 0" (1.52m)

Макс. осадка: 5' 0" (1.52m)

Купить Valiant — TARTAN а также выбрать подходящую вам яхту из нашего каталога яхт вам поможет опытный яхтенный брокер Андрей Шестаков. На сегодняшний день компания Shestakov Yacht Sales Inc. имеет большое количество яхт в собственном списке продаж, а также тесно сотрудничает со всеми крупными яхтенными производителями по всему миру.

Для того чтобы купить яхту Valiant — TARTAN а также проконсультироваться по любому вопросу связанному с покупкой, продажей, чартером яхт позвоните по телефону **+7(918)465-66-44**.

ОГЛАВЛЕНИЕ

ОГЛАВЛЕНИЕ	2
ХАРАКТЕРИСТИКИ	4
Обзор	4
Основная информация	4
Размеры	4
Скорость, вместимость и масса	4
Размещение	5
Корпус и палуба	5
Информация о двигателе	5
ПОДРОБНОЕ ОПИСАНИЕ	6
Overview	6
Исключения	13
Отказ от ответственности	13
ФОТОГРАФИИ	14
Solant rig	14
Drop down swim platform	14
Wide side decks	14
Foredeck	15
Control lines led to the cockpit	15
Comfortable cockpit	16
Cockpit	16
Cockpit cushions	16
Fold up cockpit table	16
Helm seat and storage	16
Looking forward with the canvas off	16
Attractive interior joinery	17
Fold up dining table	17
Fwd stateroom	18

Forward stateroom sink	18
Forward stateroom berth	18
Aft stateroom	19
Aft stateroom berth	19
(3) Group 27 batteries (2019)	19
Tartan 3700 Layout	19
New heat exchanger (2019)	19
Mercury 4 HP	20
Electric panel	20
Storage under the aft berth	20
КОНТАКТЫ	22
Контактная информация	22
Телефоны	22
Время работы	22
Адрес	22

ХАРАКТЕРИСТИКИ

Обзор

Fun to sail, good looking, performance cruiser with carbon spars and a reasonable draft of just 5'. This clean and well-equipped 2008 Tartan 3700 CCR checks a lot of boxes. It's well built, versatile, fun to sail, nicely equipped, clean and priced right.

- Carbon rig
- 5' Draft
- Self tending jib, 150% mast-head furling reacher, Asymmetrical spinnaker
- 2019 Batteries
- 2019 West Marine RU 250 roll-up dinghy
- Mercury 4HP outboard

Основная информация

Тип судна: Крейсерская яхта

Модельный год: 2008

Год постройки: 2008

Страна: United States

Размеры

Длина общая: 37' 0" (11.28m)

Длина по ватерлинии: 32' 6" (9.91m)

Ширина: 12' 8" (3.86m)

Мин. осадка: 5' 0" (1.52m)

Макс. осадка: 5' 0" (1.52m)

Трапы: 63' 0" (19.20m)

Длина привального бруса: 37' 0"
(11.28m)

Скорость, вместимость и масса

Водоизмещение: 16150 Pounds

Вместимость воды: 80 Gallons

Вместимость сточного бака: 24 Gallons

Объем топливного бака: 38 Gallons

Размещение

Всего кают: 2

Всего коек: 7

Всего ком. состава: 1

Корпус и палуба

Материал корпуса: Fiberglass

Информация о двигателе

Двигатели: 1

Производитель: Volvo Penta

Модель: D2-40B

Тип двигателя: Sail Drive

Тип топлива: Diesel

ПОДРОБНОЕ ОПИСАНИЕ

Overview

Accommodations

The 3700's layout works well for a small family, two couples or a liveaboard cruising couple. The staterooms are completely private and offer generously sized clothes drawers and hanging lockers. There is a proper navigation station, smartly designed galley, a functional salon with plenty of seating, and a head with a shower stall that is far enough away from the staterooms and salon to feel private. There is fantastic ventilation with 15 stainless steel opening port lights, 6 stainless steel unlimited offshore CE approved deck hatches, and 2 4" chrome dorade vents.

There are high-quality finishes throughout the 3700, such as solid cherry trim, solid raised panel cherry passage doors in cherry jambs, solid cherry cabin/drawer faces, a solid cherry table, polished chrome mortised door lock sets, polished chrome cabinet hardware, stainless steel opening ports, varnished teak and holly cabin sole with teak banded access hatches, and varnished teak handrails placed for security in a seaway.

Salon:

- Straight settee to port and a U-shaped settee to starboard
- Upgraded Ultra Suede upholstery in the salon (excellent condition)
- Solid cherry table with two folding leaves
- Shelves and cabinets above both settees
- Storage outboard of main cabin seat backs
- Main cabin settee converts to a double berth
- Recessed, dimmable overhead spotlights in cabin over head

Forward Stateroom:

- Comfortable V-berth with a new custom mattress
- Storage lockers, hanging locker and (6) drawers beneath the V-berth\
- Vanity and sink
- Two opening hatches and two opening port lights
- Through bulkhead panel ventilation door to salon
- Storage beneath berth
- Two fans

Galley:

- Innovative L-shape galley with center line sink/island next to the companionway steps
- Excellent storage: (2) upper cabinets, spice rack, (1) lower cabinet & (4) drawers outboard, (1) cabinet beneath the sink, (1) lower drawer and a hinge out trash bin
- Top loading and front opening refrigerator/freezer
- Microwave
- Double stainless steel sink
- 3 burner Force 10 gimbaled LPG stove with oven and boiler
- LPG sniffer with automatic shut off
- Granicoat solid surface galley counter tops
- Premium marine grade hot/cold faucet and manual foot pump
- 80 gallons for freshwater
- 6 gallon water heater (110 volt and heat exchanger)
- Directional spot lights in galley

Navigation Station:

- Located on the port side aft of the salon
- Forward facing with an upholstered seat and a large opening chart table
- Four drawers
- Space for electronics
- Electric panel and VHF radio

Head:

- Spacious head with a separate stall shower with Plexiglas enclosure and molded seat
- Marine head with 24 gallon holding tank
- Molded Granicote solid surface counter tops with integral sink
- Storage cabinet under the sink
- (1) opening hatch and (2) opening port lights

Aft Stateroom

- Comfortable double berth
- Three large lockers
- (4) opening port lights and (1) opening hatch
- Storage beneath berth

Hull, Deck and Cockpit

The Tartan 3700 is solidly built and CE approved for category "A" unlimited offshore.

The Hull is infused epoxy modified vinylester closed cell synthetic foam cored hull, locally reinforced at high load areas. Coated with NPG Isophthalic gelcoat. There is a internal structural grid designed to carry rig and keel loads. All hull penetrations are solid fiberglass and thru hull fittings are UL and ABS approved, corrosion free Marelon.

Valiant hull is painted with Majestic Blue Awlgrip and her deck is white with sand colored molded non-skid.

The Deck is infused epoxy vinylester with computer cut sealed end grain balsa coring. It is locally reinforced at high load areas and all deck penetrations are made into solid fiberglass.

- Teak toe rail
- Teak cabin top handrails
- Stainless steel stem fitting with integral single bow roller
- (2) stainless steel dorades with guards
- Anchor locker

Cockpit:

- 7' long cockpit seats
- Hot and cold cockpit shower
- Lewmar Pedestal with a 44" stainless steel wheel
- Teak cockpit table
- Rack and pinion steering
- Single lever engine control
- Stern mounted Raymarine radar pole with GPS
- 5" lighted binnacle compass

- Hinge down swim platform
- Cockpit mounted manual bilge pump
- Dodger and bimini
- Cockpit cushions
- Speakers
- Propane locker located in the port coaming
- Port cockpit settee storage locker
- (2) stern seat storage lockers
- Teak cockpit coamings

Sails and Rigging

- Carbon rig
- Full batten, full roach main
- Harken furling, self-tacking jib
- Harken self-tacking jib traveler
- ASYMMETRICAL SPINNAKER
- 150 percent mast head furling REACHER
- Reacher hardware package
- Working Sail Area : 732 SF
- (2) Harken 53.2 STC primary genoa winches
- (1) Harken 46.2 STC aft house top winch
- (1) Harken 40.2 STC main halyard winch
- (9) Spinlock rope clutches for aft sail control leads

- Harken mainsheet and traveler system let to cabin top winch

The Tartan 3700 CCR's rig is a carbon fiber engineering showpiece, the lofty tapered rig sports an integrally molded, strong and lightweight masthead and crane. Her double spreader rig is stronger, stiffer, and lighter than an aluminum mast. This results in an increased righting moment, greater sail carrying ability and vastly improved sailing performance. Picture having four 200 lb. crew members on the weather rail in all conditions, the good news is you get their benefit without having to feed them or house them aboard. Stronger and stiffer mean safer and faster, because carbon can be tailored to meet the changing load requirements in a mast, extra material can be added where it is needed most, this results in a mast that can be engineered with higher safety margins. A stiff rig remains in tune through changing conditions and results in all the energy of the sails being directly transformed into the energy that drives the boat. A yacht's rig is the engine that powers the boat, carbon fiber delivers maximum performance, while increasing safety and strength. Tartan's "Pocket Boom" provides the ability to fit an easy to manage, uncompromised performance mainsail. Unlike furling masts or booms, the "Pocket Boom" mainsail is cut with full roach, full battens and optimized draft. Sailmakers can design sails for performance rather than meeting the constraints of the mast or boom. The "Pocket Boom" is fit with an always-in place sail cover, unzip it and raise the sail from its contained "pocket". When dropping the main, it falls into the boom and lazy jack enclosure. Zip the sail cover back over the sail and the 3700 CCR is shipshape. With Tartan's "Pocket Boom", performance cruising is not compromised by convenience, instead it is enhanced. Upwind the 3700 CCR is fit with a roller furling, self-tacking jib. The cut is a high aspect ratio upwind blade with a long luff and tight sheeting angles. We increased the SA/Disp ratio to maintain light air performance, and the high stability of the 3700 CCR allows the boat to carry full sail when others are reefing. Tacking is as simple as putting the helm over, the jib and mainsail tack themselves. Short tacking out of a harbor or anchorage is done with little effort. When it's time to ease the sheets, set the 3700 CCR's 150 percent furling masthead reacher. This sail can be used close reaching in lighter winds, broad reaching in heavier conditions and dead downwind, wing and wing with the mainsail.

Misc. Equipment and Updates

- 2019 West Marine RU 250 roll-up dinghy

- Mercury 4 HP outboard
- Emergency tiller
- Winch handles
- Delta Plow anchor with 90" chain and 120' rope rode
- Folding prop (2016)
- Bottom painted 2018

Electrical and Mechanical

- 110 VAC and 12 VAC electric distribution panel
- 110 VAC outlets in each cabin with GFI protection
- 30 amp shore power service
- (3) Group 27 batteries (2019)
- Inverter Xantrax Freedom Marine 10
- ProSafe Galvonic isolation failsafe30
- Electric bilge pump with automatic float switch
- New heat exchanger (2019)
- New raw water pump (2019)
- Saildrive fluids changed (2018)
- Saildrive and prop zincs changed (2019)

Electronics

- Raymarine radar
- VHF - Icom M422 w/cockpit mic (Icom ISM 157)
- AIS - Simrad MAIS 400 Class B
- Raymarine Raystar 125 GPS Sensor
- Raymarine C80 Chart Plotter
- Raymarine ST60+ wind, speed and depth
- Autopilot - Raymarine Smart Pilot ST6002
- Stereo with salon and (2) cockpit speakers

Исключения

При продаже яхты исключаются личные вещи владельца.

Отказ от ответственности

Компания предоставляет описание судна или яхты добросовестно, но не может гарантировать точность этой информации, а также не ручается за техническое состояние. Покупатель должен проинструктировать своих агентов или оценщиков исследовать представленную информацию более подробно, по собственному желанию. Продажа судна или яхты, изменение цены или снятие с продажи будет происходить без предварительного уведомления.

ФОТОГРАФИИ

Solant rig



Drop down swim platform



Wide side decks





Foredeck



Control lines led to the cockpit



Comfortable cockpit



Cockpit



Cockpit cushions



Fold up cockpit table



Helm seat and storage



Looking forward with the canvas off



Attractive interior joinery



Fold up dining table





Fwd stateroom



Forward stateroom berth



Forward stateroom sink



Aft stateroom



Aft stateroom berth

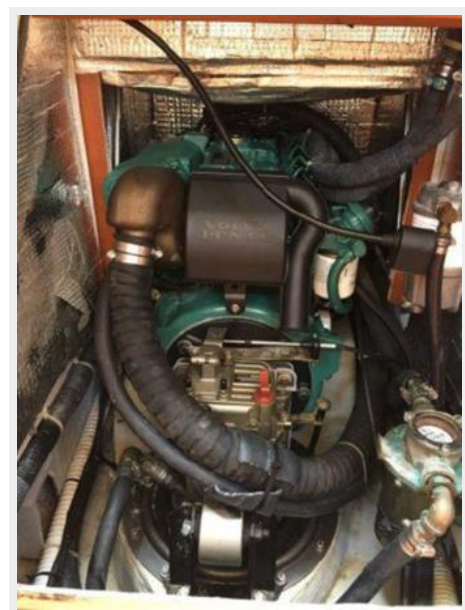


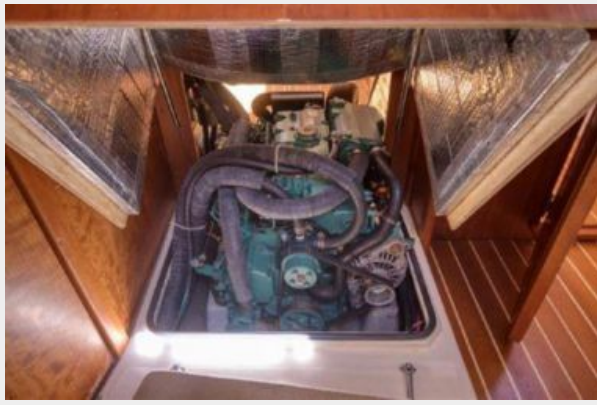
(3) Group 27 batteries (2019)

Tartan 3700 Layout



New heat exchanger (2019)





Mercury 4 HP



Electric panel



Storage under the aft berth





КОНТАКТЫ

Андрей Шестаков (Andrey Shestakov) – ведущий яхтенный брокер отдела продаж яхт и судов компании Shestakov Yacht Sales Inc. Официальный представитель Shestakov Yacht Sales Inc. для русскоговорящих клиентов в центральном офисе компании в Майами/Форт Лодердейл/Флорида/США.

Контактная информация

Email: andrey@shestakovyachtsales.com

Web: shestakovyachtsales.com

Телефоны

Краснодарский край: **+7(918)465-66-44**

США, Майами, Флорида: **+1(954)274-4435**

Время работы

Понедельник – Суббота: **9:00 - 21:00**
EDT

Воскресенье: **Закрито**

Адрес



Harbour Towne Marina, 850 NE 3rd St,
STE 213, Dania, FL 33004