

SEA LION — ISLAND PACKET YACHTS



Builder: ISLAND PACKET YACHTS

Year Built: 1991

Model: Cruising Sailboat

Price: PRICE ON APPLICATION

Location: United States

LOA: 38' 0" (11.58m)

Beam: 12' 0" (3.66m)

Max Draft: 4' 6" (1.37m)

Our experienced yacht broker, Andrey Shestakov, will help you choose and buy a yacht that best suits your needs **Sea Lion — ISLAND PACKET YACHTS** from our catalogue. Presently, at Shestakov Yacht Sales Inc., we have a wide variety of yachts available on our sale's list. We also work in close contact with all the big yacht manufacturers from all over the world.

If you would like to buy a yacht **Sea Lion — ISLAND PACKET YACHTS** or would like help answering any questions concerning purchasing, selling or chartering a yacht, please call **+1(954)274-4435**

TABLE OF CONTENTS

TABLE OF CONTENTS	2
SPECIFICATIONS	3
Overview	3
Basic Information	3
Dimensions	3
Speed, Capacities and Weight	3
Accommodations	3
Hull and Deck Information	4
Engine Information	4
DETAILED INFORMATION	5
Overview	5
Exclusions	8
Disclaimer	8
PHOTOS	9
Large, Well Ventillated Vee Berth	9
Main Saloon looking Forward	9
Head with Separate Shower Area	9
Nav Station	9
Quarter Berth with Full Double Berth	10
Companionway	10
Large Galley	10
Starboard Side at Dock	10
CONTACTS	11
Contact details	11
Telephones	11
Office hours	11
Address	11

SPECIFICATIONS

Overview

Sea Lion is a great cruiser that is designed to take you to your favorite gunkhole or around the world securely and in comfort. The Island Packet 35 is a Classic with full foil keel, spade rudder, high aspect cutter rig, great elbow room and storage. She is luxurious, roomy and sea kindly. With her modern cruising rig and 35HP Yanmar diesel, the 35s have surprising performance under sail and power.

Basic Information

Category: Cruising Sailboat

Model Year: 1991

Year Built: 1991

Country: United States

Dimensions

LOA: 38' 0" (11.58m)

LWL: 30' 0" (9.14m)

Beam: 12' 0" (3.66m)

Max Draft: 4' 6" (1.37m)

Clearance: 48' 0" (14.63m)

MFG Length: 35' 0" (10.67m)

Speed, Capacities and Weight

Displacement: 17500 Pounds

Water Capacity: 90 Gallons

Holding Tank: 18 Gallons

Fuel Capacity: 48 Gallons

Accommodations

Total Cabins: 2

Total Heads: 1

Hull and Deck Information

Hull Material: Fiberglass

Engine Information

Engines: 1

Manufacturer: Yanmar

Model: 3GM

Engine Type: Inboard

Fuel Type: Diesel

DETAILED INFORMATION

Overview

Accommodations and Walkthrough

The IP 35 has a private Vee Berth with a separate entry to the Head. There is a Hanging Locker to starboard of entry, shelves along both hull sides, an opening hatch and 2 opening ports.

The very roomy Head follows aft on port with a separate shower area, commode, sink and lots of storage. It is well ventilated with an opening hatch and port.

Next aft is the roomy Saloon with facing settees (port side converts to a double berth) and the large dining table with a fold out leaf stores against the forward bulkhead when not in use. There are shelves above the settees and a lot more storage behind and under the seating.

The aft facing Nav Station is on port with a nice sized desk and additional storage plus both the 12 and 110 Volt Electrical Panels are within easy reach.

The huge wrap around Galley is across on starboard with deep double sinks, 3 burner, propane, gimballed stove/oven, large refrigerator/freezer and tons of counter and storage space including very clever dinnerware storage.

A very comfy Quarter Berth sits behind the Nav Station on Port with a hanging locker and a storage cabinet at the entry. There is room to dress in private and a comfortable seat inside that entrance.

The centerline Companionway has six steps up to the Cockpit over the Engine Compartment which has easy access on both sides and front. The drive train is fully accessible under the

Quarterberth cushions.

The Cockpit is long and large enough for safe and comfortable sailing as well as entertaining and napping. At the center of the transom there is a swim ladder. A deep lazarette on starboard and a shallow one over the Quarterberth on port as well as a couple of open coaming lockers provide a place for everything.

- teak and holly sole except for fiberglass non-skid in Galley and Head
- All Ports and Hatches Open
- 3 Burner Princess Gimballed Propane Stove/Oven
- Adler Barbour 12 Volt Refrigeration with Freezer Basket
- Hot/Cold Pressure Water

Deck Construction and Equipment

The Island Packet has a solid fiberglass hull with integral bowsprit, full foil keel (great tracking), and a modern Spade Rudder (great steering response) . The Deck is synthetically cored eliminating voids, delaminations and rot associated with water intrusion.

- Dock Lines and Fenders
- USCG Safety Package
- Boat Hook
- Cockpit Cushions
- Cockpit Table
- Kato Dinghy Davits
- Bruce and Danforth Anchors each with a chain & 3-strand nylon rode

Electrical

The Island Packet 35 has both a 12 Volt Ship and a 120 Volt Shorepower Electrical

System.each with its own panel and monitoring system.

- 5-AGM Group 27 Batteries (4 House and 1 Engine Start)
- Battery Charger
- 50' Shorepower Cord
- Heart Interface Link 20 Battery Monitor Display
- 12 Volt Outlet at Nav Station
- 120 Volt Receptacles in each cabin
- 12 Volt Reading Lights throughout
- Electric 6 Gallon Hot Water Heater

Sail Handling and Rigging

Sea Lion has a modern, Higher Aspect, Mast Head Cutter Rig

- Mainsail with Doyle Stackpack, Harken Bat Cars and a 2 Point, Single Line Reefing System Controlled from the Cockpit
- Rope Boom Vang with Lines Led to Cockpit
- Coach Roof Mounted Traveler with Lines Led to Cockpit
- 130% Genoa '06
- Whisker Pole Stored on Mast
- Staysail on Self-Tacking Boom
- Genoa & Staysail Mounted on Harken Furling Systems
- 2 Winch Handles
- Lewmar 43 Self Tailing, 2-Speed Primary Winches
- Lewmar 16 ST Mainsail Halyard/Sheet Winch and Sheeting Winches on Coachroof
- Lewmar 8 Staysail Sheet Winch on Coachroof
- Lewmar 8 Staysail Halyard Winch on Mast
- Lewmar 16 Genoa Halyard Winch on Mast

Electronics and Navigation Equipment

- Ritchie Compass at Helm•
- Raymarine E80 Display at Helm with Radar, GPS and Chartplotter
- Raymarine ST6000 Smart Auto Pilot
- Datamarine Corinthian Knotmeter, Depthsounder and Wind Direction/Speed Instruments
- ICOM ICM422 VHF Radio

Mechanicals

- Yanmar 3-Cylinder, FWC 35HP Diesel
- Macerator
- Electric Auto/Manual Bilge Pump
- Mechanical Bilge Pump
- All Engine Water & Exhaust Hoses Replaced '17
- All Drain Hoses Replaced '17
- Domestic Water Pump '18

Exclusions

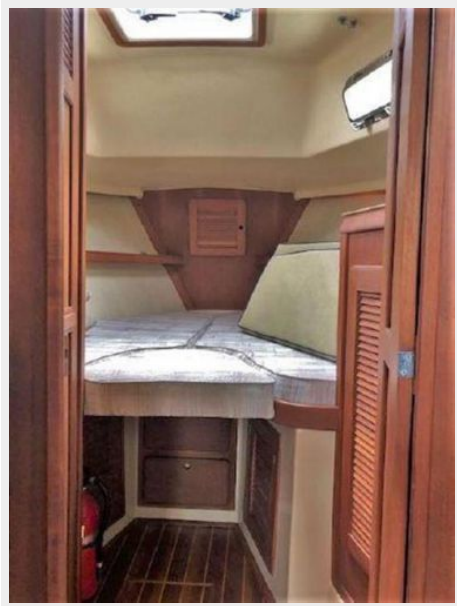
Owner's personal belongings.

Disclaimer

The Company offers the details of this vessel or yacht in good faith but cannot guarantee or warrant the accuracy of this information nor warrant the condition of the vessel. A buyer should instruct his representatives, agents, or his surveyors, to investigate such details as the buyer desires validated. This vessel or yacht is offered subject to prior sale, price change, or withdrawal without notice.

PHOTOS

Large, Well Ventillated Vee Berth



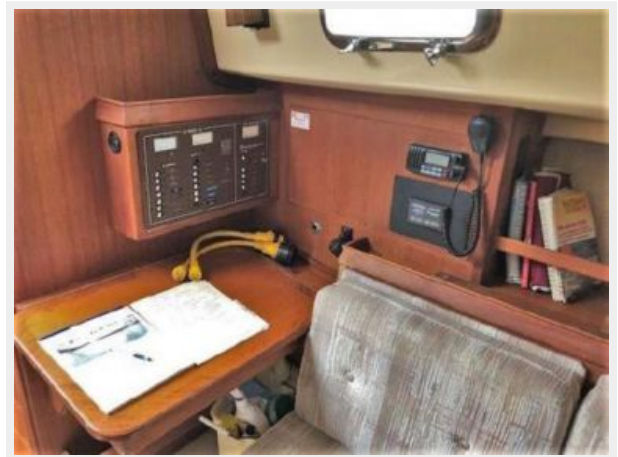
Main Saloon looking Forward



Head with Separate Shower Area



Nav Station



Quarter Berth with Full Double Berth



Companionway



Large Galley



Starboard Side at Dock



CONTACTS

Andrey Shestakov, leading yacht broker of the sales department of Shestakov Yacht Sales Inc. Shestakov Yacht Sales Inc., the official representative of the Miami/Fort Lauderdale FL headquarters.

Contact details

Email: andrey@shestakovyachtsales.com

Web: shestakovyachtsales.com/en/

Telephones

USA: +1(954)274-4435

Office hours

Monday – Saturday: **9:00 - 21:00** EDT

Sunday: **closed**

Address



Harbour Towne Marina, 850 NE 3rd St,
STE 213, Dania, FL 33004