

## TALARIA — MARIEHOLMS BRUK



**Судостроитель:** MARIEHOLMS BRUK

**Год постройки:** 1986

**Модель:** Крейсерская яхта

**Цена:** **ЦЕНА ЯХТЫ ПО ЗАПРОСУ**

**Местонахождение:** United States

**Длина общая:** 33' 0" (10.06m)

**Ширина:** 9' 11" (3.02m)

**Макс. осадка:** 4' 9" (1.45m)

Купить Talaria — MARIEHOLMS BRUK а также выбрать подходящую вам яхту из нашего каталога яхт вам поможет опытный яхтенный брокер Андрей Шестаков. На сегодняшний день компания Shestakov Yacht Sales Inc. имеет большое количество яхт в собственном списке продаж, а также тесно сотрудничает со всеми крупными яхтенными производителями по всему миру.

Для того чтобы купить яхту Talaria — MARIEHOLMS BRUK а также проконсультироваться по любому вопросу связанному с покупкой, продажей, чартером яхт позвоните по телефону **+7(918)465-66-44**.

# ОГЛАВЛЕНИЕ

ОГЛАВЛЕНИЕ	2
ХАРАКТЕРИСТИКИ	4
Обзор	4
Основная информация	4
Размеры	4
Скорость, вместимость и масса	5
Размещение	5
Корпус и палуба	5
Информация о двигателе	5
ПОДРОБНОЕ ОПИСАНИЕ	6
Overview	6
Исключения	9
Отказ от ответственности	9
ФОТОГРАФИИ	10
Looking forward	10
Deep cockpit seating	10
Salon	10
On the hard- Port Side	10
Deck looking aft	10
Cockpit and Dodger	10
V-berth - additional storage above and hanging lockers behind entrance doors	11
Companionway Boards	11
Table and seating	11
Galley	11
Sink	12
Custom ice box	12
Custom ice box	12
Lid closed showing dish storage	12

---

Electrical Panel	12
Extra storage and quarterberth	12
Smart three stage charger	13
Head	13
Head	13
Looking aft toward companionway	13
Nav table that doubles as a cockpit table	14
Port Quarterberth	14
Excellent access to engine	14
Single lever control	14
Layout	14
<b>КОНТАКТЫ</b>	<b>15</b>
Контактная информация	15
Телефоны	15
Время работы	15
Адрес	15

# ХАРАКТЕРИСТИКИ

## Обзор

The Marieholm Fortissimo 33 is a Scandinavian built cruiser with an excellent pedigree. We have all heard of the Marieholm 24 and 26 ( the classic" Folkboat", long known for her beautiful lines and stalwart build.....and this is her big sister.You will not see yourself on the water. Not many of these beauties were imported. She is owned by her original purchasers who ordered her from Sweden. She has been well loved by very detail oriented people, and her history of maintenance and upgrading will be gladly shared.This is a boat that is designed to be sailed in the North Sea and her construction is tough and built to last. Her decks are cored with Divinycell and are not subject to degradation like wooden cored decks. When you step on board, you feel the solid build under foot. But, even though she is one tough boat, she sails..... and her performance will not disappoint.Her interior joinery is lovely and several custom additions really add to her comfort and utility. Runo Siren, a well known Swedish boat carpenter here on the Chesapeake was responsible for the beautiful additions and changes to the interior. They are spelled out but, the best way to appreciate them is to look at the photographs.This is a boat for a sailor. If you love the sea and want a boat to safely take you where you want to go but, would prefer a boat that is simple, easy and safe....in addition to being affordable, she is for you.

## Основная информация

**Тип судна:** Крейсерская яхта

**Модельный год:** 1986

**Год постройки:** 1986

**Страна:** United States

## Размеры

**Длина общая:** 33' 0" (10.06m)

**Длина по ватерлинии:** 24' 0" (7.32m)

**Ширина:** 9' 11" (3.02m)

**Макс. осадка:** 4' 9" (1.45m)

**Длина привального бруса:** 33' 0"  
(10.06m)

---

## Скорость, вместимость и масса

---

**Водоизмещение:** 9600 Pounds

---

## Размещение

---

**Всего кают:** 3

---

## Корпус и палуба

---

**Материал корпуса:** Fiberglass

---

## Информация о двигателе

---

**Двигатели:** 1

**Производитель:** Volvo Penta

**Модель:** 2003 - 3 cylinder

**Тип двигателя:** Inboard

**Тип топлива:** Diesel

---

# ПОДРОБНОЕ ОПИСАНИЕ

---

## Overview

---

### Accommodations

This boat amazingly accommodates two in the forward v-berth, two on each settee and two quarterberths that sleep one adult in the starboard quarterberth and a child in the port quarterberth.

The forward cabin has a filler for the v-berth, storage beneath the bed and banks of storage on either side. Hanging lockers are on either side of the doorway, and the door has been split to fold against the hanging lockers when open.

The main salon has a centerline drop leaf table, an "L" shaped settee to port and a facing settee to starboard. There are good storage areas above and behind the settees and, the settee backs secure up to allow a larger bed when sleeping in the salon.

The table legs of the drop leaf table have been hinged so that the table can be lowered enabling the port berth in the main salon to be set up as a double.

The "L" shaped galley is located on the port side at the base of the companionway. A double bowl stainless steel sink, propane stove with oven and, large icebox with dish storage above complete it.

The electrical panels are mounted on the bulkhead between the ice chest/dish storage area and a hanging locker located aft of this area.

The head is to starboard at the base of the companionway and aft of the head is a large quarterberth, also with additional book shelf and desk.

All in all, it is a very clean and well kept interior with many wonderful custom features.

- Screens for overhead hatches and companionway
- Factory installed extra cabinetry
- Many beautiful bits of custom woodwork throughout
- NOTE: Clock and Barometer do not convey

## Galley

The galley in Talaria is "L" shaped and efficient.

- Double stainless steel sinks
- Pressure cold water
- Gimballed Optimus Propane stove with oven
- Large, well insulated ice box with separate drain....does not drain into bilge
- Smaller, original ice box has added insulation

## Deck and Hull

- Deep, sea safe cockpit
- Tiller Steering
- Dodger
- Divinycell coring in deck
- Cockpit table that doubles as nav desk below
- Deep storage lockers
- Stainless BBQ
- Cockpit Cushions
- Man Overboard Pole
- Horseshoe Life Ring

## Sails and Rigging

- Extruded aluminum mast and boom
- Mainsail
- 130% Genoa - light weight
- 100% Jib with reef points- heavy weight
- UK Storm Blade
- Primaries are Anderson 46 Two Speed Self Tailing Winches - Upgrade
- Anderson single speed winches on cabin top
- Mainsail Traveler in Cockpit
- All halyards led aft to the cockpit
- Whisker Pole

## Electronics

- Bulkhead Mounted Compass
- The Silva Depth Sounder and and speedo have been replaced by a Garmin 456s GPS with Depth Sounder

## Electrical

- Talaria has a 12v ship's service
- Larger engine alternator
- Three Stage Alternator/ Regulator
- (2) Group 27 AGM Batteries
- (1) Group 24 AGM Battery
- (3) 12v Fans



## Mechanical and Plumbing

- Volvo 3 cylinder 27 HP Volvo diesel engine - Fresh water cooled
- 9 Gallon Stainless Steel Fuel Tank
- Manual and electric bilge pumps - both replaced and upsized - manual bilge pump feeds to a T-valve that allows discharge either overboard or into a five gallon closed container
- (2) 10 gallon propane tanks in a locker. Gas sniffers have been installed in bilge, under stove and in aft locker under tanks.
- Ice box drains have been fed to the sea cock that drains the sinks instead of draining to the bilge
- Two 25 Gallon stainless steel water tanks
- 10 Gal stainless steel holding tank with Y valve for dockside pump-out or sea discharge

## Исключения

---

При продаже яхты исключаются личные вещи владельца.

## Отказ от ответственности

---

Компания предоставляет описание судна или яхты добросовестно, но не может гарантировать точность этой информации, а также не ручается за техническое состояние. Покупатель должен проинструктировать своих агентов или оценщиков исследовать представленную информацию более подробно, по собственному желанию. Продажа судна или яхты, изменение цены или снятие с продажи будет происходить без предварительного уведомления.

# ФОТОГРАФИИ

Looking forward



Deep cockpit seating



Salon



On the hard- Port Side



Deck looking aft



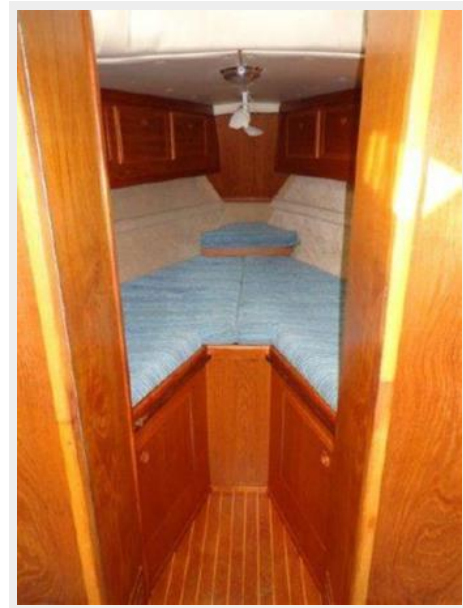
Cockpit and Dodger



### Companionway Boards



### V-berth - additional storage above and hanging lockers behind entrance doors



### Table and seating



### Galley



**Sink**



**Custom ice box**



**Custom ice box**



**Lid closed showing dish storage**



**Electrical Panel**



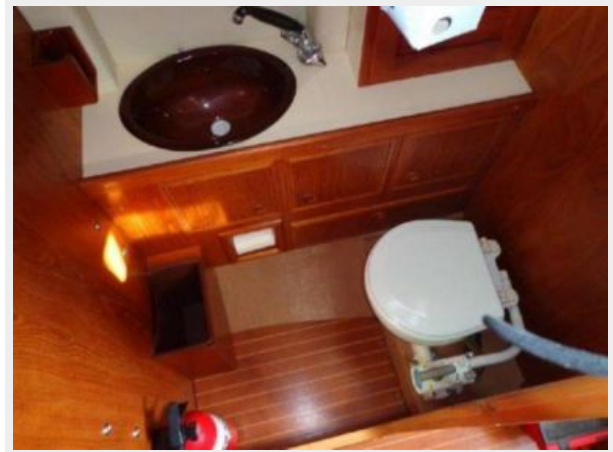
**Extra storage and quarterberth**



**Smart three stage charger**



**Head**



**Head**



**Looking aft toward companionway**



Nav table that doubles as a cockpit table

Port Quarterberth



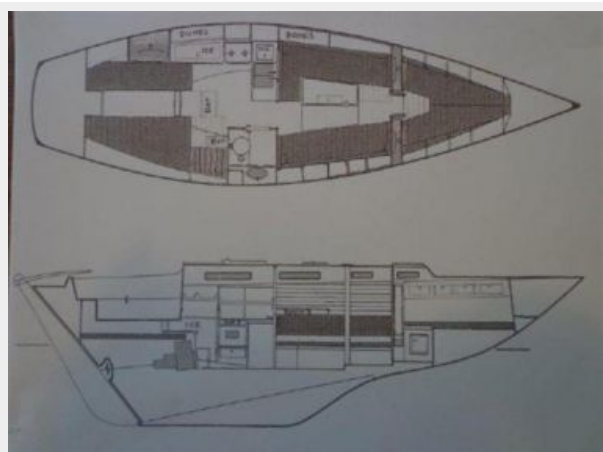
Excellent access to engine



Single lever control



Layout



# КОНТАКТЫ

---

Андрей Шестаков (Andrey Shestakov) – ведущий яхтенный брокер отдела продаж яхт и судов компании Shestakov Yacht Sales Inc. Официальный представитель Shestakov Yacht Sales Inc. для русскоговорящих клиентов в центральном офисе компании в Майами/Форт Лодердейл/Флорида/США.

## Контактная информация

---

Email: [andrey@shestakovyachtsales.com](mailto:andrey@shestakovyachtsales.com)

Web: [shestakovyachtsales.com](http://shestakovyachtsales.com)

## Телефоны

---

Краснодарский край: **+7(918)465-66-44**

США, Майами, Флорида: **+1(954)274-4435**

## Время работы

---

Понедельник – Суббота: **9:00 - 21:00**  
EDT

Воскресенье: **Закрето**

## Адрес

---



Harbour Towne Marina, 850 NE 3rd St,  
STE 213, Dania, FL 33004