

MAGNOLIA — ISLAND PACKET YACHTS



Builder: ISLAND PACKET YACHTS

Year Built: 1992

Model: Cruising Sailboat

Price: PRICE ON APPLICATION

Location: United States

LOA: 32' 0" (9.75m)

Beam: 10' 10" (3.30m)

Max Draft: 4' 3" (1.30m)

Our experienced yacht broker, Andrey Shestakov, will help you choose and buy a yacht that best suits your needs **Magnolia — ISLAND PACKET YACHTS** from our catalogue. Presently, at Shestakov Yacht Sales Inc., we have a wide variety of yachts available on our sale's list. We also work in close contact with all the big yacht manufacturers from all over the world.

If you would like to buy a yacht **Magnolia — ISLAND PACKET YACHTS** or would like help answering any questions concerning purchasing, selling or chartering a yacht, please call **+1(954)274-4435**

TABLE OF CONTENTS

TABLE OF CONTENTS	2
SPECIFICATIONS	5
Overview	5
Basic Information	5
Dimensions	5
Speed, Capacities and Weight	5
Accommodations	6
Hull and Deck Information	6
Engine Information	6
DETAILED INFORMATION	7
Overview	7
Exclusions	10
Disclaimer	10
PHOTOS	11
1992 Island Packet 29 - Magnolia	11
Salon with fold-up table	11
Cockpit Table	11
Forward cabin	11
Port forward	11
Port aft	11
Starboard aft	12
Starboard side	12
Main Salon	12
Island Packet 29 - Layout	12
Main Salon - Port Side	12
Port settee	13
Starboard settee	13
Salon looking aft	13

Forward Stateroom	13
Storage	13
Forward Stateroom Looking Aft	14
Aft Berth	14
Galley	14
Galley and Companionway	14
Ice Box	14
Ice Box and Counter	14
Fold-up Nav Table	15
Navigation Station	15
Vanity and sink	15
Head	15
Engine Access	16
Dodger and mainsheet traveler	16
Deck view	16
Stainless steel ports	17
Bow pulpit	17
Anchor Locker	17
Primary Winch	17
Wood Cleat	18
Line Storage	18
Cockpit Shower	18
Helm seat and wheel	18
Cockpit locker	18
Engine	19
Engine	19
Magnolia - On-the-hard	19
CONTACTS	20
Contact details	20

Telephones	20
Office hours	20
Address	20

SPECIFICATIONS

Overview

The capable Island Packet 29 packs a big punch and MAGNOLIA has many desirable updates, such as a, NEW HEAD SAIL, NEW MAINSAIL COVER (2019), NEW DODGER (2019), NEW BIMINI (2019) and NEW INTERIOR & EXTERIOR CUSHIONS. Her engine underwent a major overhaul in 2013, and she has been well maintained.

The Island Packet 29 offers spirited performance with exceptional sea keeping and safety, spacious accommodations that invite living aboard, and quality that reflects the high standards of the builder. A true benchmark for cruising sailboats, the IP29 has proven itself capable and comfortable in thousands of miles of both ocean cruising and gunk-holing.

Basic Information

Category: Cruising Sailboat

Model Year: 1992

Year Built: 1992

Country: United States

Dimensions

LOA: 32' 0" (9.75m)

LWL: 25' 7" (7.80m)

LOD: 29' 0" (8.84m)

Beam: 10' 10" (3.30m)

Max Draft: 4' 3" (1.30m)

Clearance: 44' 0" (13.41m)

MFG Length: 29' 0" (8.84m)

Speed, Capacities and Weight

Displacement: 11900 Pounds

Water Capacity: 45 Gallons

Holding Tank: 14 Gallons

Fuel Capacity: 23 Gallons

Accommodations

Total Cabins: 2

Total Berths: 7

Total Heads: 1

Hull and Deck Information

Hull Material: Fiberglass

Exterior Designer: Robert K. Johnson

Engine Information

Engines: 1

Manufacturer: Yanmar

Engine Type: Inboard

Fuel Type: Diesel

DETAILED INFORMATION

Overview

Interior

The interior of the Island Packet 29 is surprisingly spacious! The V-berth forward and large aft bunk provide for two doubles, while the main salon settees can provide up to three additional berths using the port-side pull out extension. A U-shaped galley, with an LPG propane stove, large foam-insulated ice box and numerous storage racks and cabinets, sits snugly out of companionway traffic but remains convenient to both cockpit and salon. The flip-up chart table provides a complete navigation station. The head compartment includes a fully-enclosed shower with an electric head. There is plenty of natural light and ventilation throughout the interior with nine stainless steel opening ports, five deck hatches, and two deck ventilators. The hand-crafted oiled teak joinery and teak and holly cabin sole help to create a warm and comfortable feel.

- INTERIOR UPHOLSTERY (NEW 2017)
- NEW ELECTRIC FLUSH TOILET
- Nine opening stainless steel ports and five deck hatches
- Deluxe drop leaf table folds against bulkhead rack (w/bottle storage).
- Large forepeak w/louvered door
- Molded slip resistant cabin sole adjacent to companionway, galley & nav area w/draining in front of the ladder.
- Removable teak companionway ladder w/engine access from all sides

Equipment List

- New Dodger (2019)
- New Bimini (2019)
- New Helm Cover (2019)
- New Mainsail Cover (2019)
- Bruce 10kg (primary anchor w/chain & nylon)

- Swim ladder
- Lifesling
- Cockpit Cushions (NEW 2017)

Electronics and Navigation

- Compass Ritchie SP-5 at Helm
- ICOM ICM422 VHF Radio with Command MIC II at helm
- Garmin GPSmap 546
- Raymarine Smart Pilot
- Autohelm Depth
- Autohelm Speed
- Kenwood stereo with two interior speakers

Mechanical, Electrical and Plumbing

- 27 HP Yanmar diesel - three-cylinder, fresh water cooled with electric fuel pump, twin fuel filters and a three blade prop. Approx. 180 hours since the overhaul.
- Racor fuel filter
- Recessed cockpit instrument panel w/electric tachometer, engine monitoring & warning system
- Deluxe electric panels w/ four-way battery switch, circuit breakers for DC & AC systems
- 30 Amp dockside power system w/polarity protection, 50' shore power cord, numerous interior outlets w/GFI protection, galvanic isolator
- Marine converter/battery charger - 20 Amp Raritan B-series
- Numerous 12V interior lamps and courtesy lamps
- Water heater - 6 gal. marine type w/engine heat exchanger & operation
- Pressure water system w/hot & cold water tap in galley & head unit in head, cockpit (cold only)
- Manual water pump in galley
- LPG stove system w/10 lb aluminum tank (in draining storage well)
- 45 gal. marine aluminum water tank w/deck fill
- 23 gal. marine aluminum fuel tank w/deck fill.
- Deck fittings for water, fuel, waste
- Electric bilge pump, ice box drain pump and shower drain pump

Sails, Rigging and Hardware

- Sloop Rig
- Main with a sail cover, dodger and Bimini in 2019
- Mainsail serviced in 2014
- NEW 150% FURLING GENOA
- RUNNING RIGGING REPLACED IN 2014
- Dual single line "Auto Reefing" system for a double set of reef points led to cockpit through stoppers to Lewmar 16CST winch
- Boom vang/preventer package
- Jib sheet traveler w/ 4:1 control system
- Keel stepped mast, all anodized spars - Sparcraft Ocean Series
- Edson rack & pinion wheel steering w/molded seat, teak cover and stainless steel wheel.
- Double lifelines w/quick release hooks aft, full-length teak cabin top handrails
- Stern gate w/quick release hook
- Swim ladder (stainless steel transom mount) w/teak steps
- Two stainless steel anchor rollers w/chocks and hinged deck pipes to the foredeck
- Four 10" mooring cleats, two 10" spring line cleats, chocks & stainless steel chafe guards

Notes

- NEW HEADSAIL
- BOTTOM PAINTED 2/2018
- ZINCS REPLACED 2/2018
- ENGINE OIL CHANGED 7/2017
- FUEL POLISHED 12/2017
- TWO OWNERS SINCE NEW
- PARTIAL ENGINE OVERHAUL 2013
- CUTLASS BEARING 2013
- DRIPLESS SHAFT SEAL 2013
- NEW RUNNING RIGGING 2014
- BIMINI 2014
- INTERIOR UPHOLSTERY (NEW 2017)

- COCKPIT CUSHIONS (NEW 2017)

Exclusions

Owner's personal belongings.

Disclaimer

The Company offers the details of this vessel or yacht in good faith but cannot guarantee or warrant the accuracy of this information nor warrant the condition of the vessel. A buyer should instruct his representatives, agents, or his surveyors, to investigate such details as the buyer desires validated. This vessel or yacht is offered subject to prior sale, price change, or withdrawal without notice.

PHOTOS

1992 Island Packet 29 - Magnolia



Salon with fold-up table



Cockpit Table



Forward cabin



Port forward



Port aft



Starboard aft



Starboard side



Main Salon

Island Packet 29 - Layout



Main Salon - Port Side



Port settee



Starboard settee



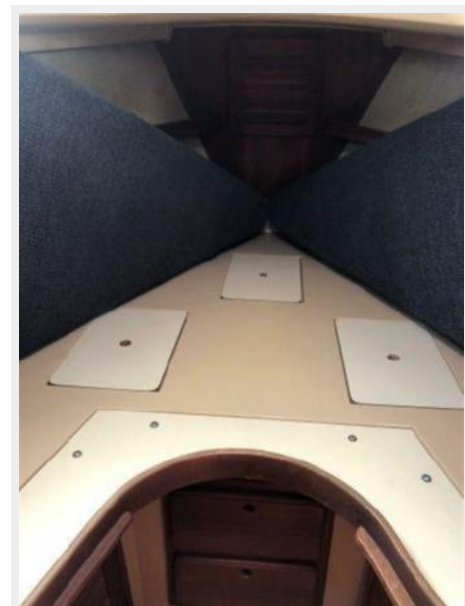
Salon looking aft



Forward Stateroom



Storage



Forward Stateroom Looking Aft



Aft Berth



Galley



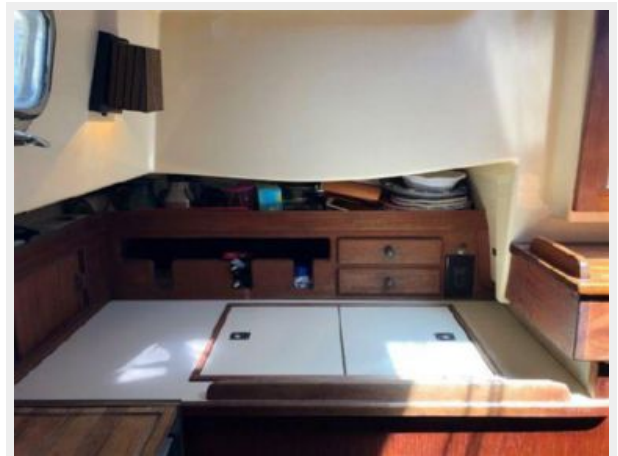
Galley and Companionway



Ice Box



Ice Box and Counter



Navigation Station



Fold-up Nav Table



Vanity and sink



Head



Engine Access



Dodger and mainsheet traveler



Deck view



Bow pulpit



Stainless steel ports



Anchor Locker



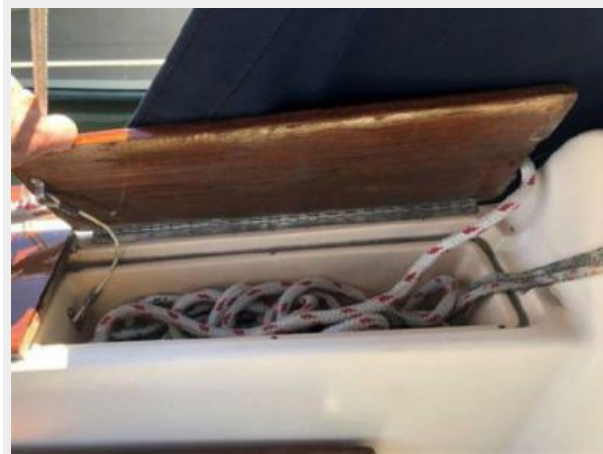
Primary Winch



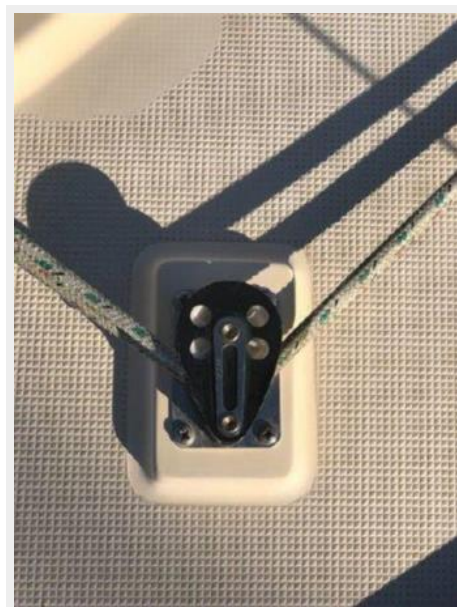
Wood Cleat



Line Storage



Cockpit Shower



Helm seat and wheel



Cockpit locker



Engine



Engine



Magnolia - On-the-hard



CONTACTS

Andrey Shestakov, leading yacht broker of the sales department of Shestakov Yacht Sales Inc. Shestakov Yacht Sales Inc., the official representative of the Miami/Fort Lauderdale FL headquarters.

Contact details

Email: andrey@shestakovyachtsales.com

Web: shestakovyachtsales.com/en/

Telephones

USA: +1(954)274-4435

Office hours

Monday – Saturday: **9:00 - 21:00** EDT

Sunday: **closed**

Address



Harbour Towne Marina, 850 NE 3rd St,
STE 213, Dania, FL 33004