

TRITON — ISLAND PACKET YACHTS



Builder: ISLAND PACKET YACHTS

Year Built: 1988

Model: Cruising Sailboat

Price: PRICE ON APPLICATION

Location: United States

LOA: 30' 0" (9.14m)

Beam: 10' 6" (3.20m)

Max Draft: 3' 8" (1.12m)

Our experienced yacht broker, Andrey Shestakov, will help you choose and buy a yacht that best suits your needs **Triton — ISLAND PACKET YACHTS** from our catalogue. Presently, at Shestakov Yacht Sales Inc., we have a wide variety of yachts available on our sale's list. We also work in close contact with all the big yacht manufacturers from all over the world.

If you would like to buy a yacht **Triton — ISLAND PACKET YACHTS** or would like help answering any questions concerning purchasing, selling or chartering a yacht, please call **+1(954)274-4435**

TABLE OF CONTENTS

TABLE OF CONTENTS	2
SPECIFICATIONS	4
Overview	4
Basic Information	4
Dimensions	4
Speed, Capacities and Weight	4
Accommodations	5
Hull and Deck Information	5
Engine Information	5
DETAILED INFORMATION	6
Overview	6
Exclusions	9
Disclaimer	9
PHOTOS	10
Spacious Vee Berth with overhead Hatch	10
Starboard Stern & Transom & Swim Platform	10
Big Well Ventilated Head	10
Starboard Side Saloon w/Table Stored	10
Looking from Saloon into Vee Berth	11
Galley	11
Instruments & Electric Panel	11
Looking from Saloon into Quarter Berth	11
Deck Forward of Companionway	12
3 Cylinder Yanmar Diesel	12
Foredeck	12
Large and Comfortable Cockpit	12
Custom Swim Platform & Ladder	13
Cockpit Engine Panel & Storage	13

Spade Rudder, Feathering Propeller	13
CONTACTS	14
Contact details	14
Telephones	14
Office hours	14
Address	14

SPECIFICATIONS

Overview

AC - CUSTOM SWIM PLATFORM - FURLING HEADSAIL - UPGRADED UPHOLSTERY & MUCH MORE!!

The Island Packet 27 is a very large small cruiser with much more elbow room than you would expect. "Triton" will take you just about anywhere you would want to go in comfort and safety and with surprising performance. The 27 is the perfect family cruiser with room to sleep 6. She has a nice sized head with hot/cold pressure water, complete galley, and a fold-up table that is not crowding the salon after dinner. Her cockpit is huge with room to sail, entertain or snooze. And, Island Packets hold their value so well. This 27 is equipped and ready to provide a great getaway. Call now for more pictures and information.

Basic Information

Category: Cruising Sailboat

Model Year: 1988

Year Built: 1988

Country: United States

Dimensions

LOA: 30' 0" (9.14m)

LWL: 24' 3" (7.39m)

Beam: 10' 6" (3.20m)

Max Draft: 3' 8" (1.12m)

Clearance: 38' 6" (11.73m)

MFG Length: 27' 0" (8.23m)

Speed, Capacities and Weight

Displacement: 8000 Pounds

Water Capacity: 31 Gallons

Holding Tank: 12 Gallons

Fuel Capacity: 19 Gallons

Accommodations

Total Cabins: 2

Total Heads: 1

Hull and Deck Information

Hull Material: Fiberglass

Engine Information

Engines: 1

Manufacturer: Yanmar

Model: 2GM

Engine Type: Inboard

Fuel Type: Diesel

DETAILED INFORMATION

Overview

Accommodations and Walkthru

There is a comfortable Vee Berth forward with a large opening hatch. Aft of which on starboard is the roomy Head with commode, sink, shower, wet locker, and opening port. Across on port from the head is a hanging locker. Continuing aft is the Main Saloon. There is a cleverly designed bulkhead hung table on Starboard that is out of the way when not needed making the Saloon seem so much larger than most boats. The starboard settee converts to form a double berth. The settee on port is long enough to allow an adult to sleep. The Galley is aft of the saloon on port with sink, ice box, and two burner alcohol stove. The Companionway rises over the Engine Compartment with an access door under the steps. It is centered and divides the Galley and the Quarterberth entrance. The Quarterberth is large enough for a couple to sleep comfortably. The "L" shaped Galley is on Port featuring a sink, 2-burner non-pressure alcohol stove-top plus good counter space and storage. Finally, the Cockpit is long enough to accommodate your sailing crew, your guests and has the room for a lazy afternoon nap. The IP27 is a very comfortable and safe pocket cruiser that seems much larger than 27' implies.

- Air Conditioning Unit
- Hot Cold Pressure Water
- Teak & Holly Sole throughout except in Galley and Head
- Screens for all opening Ports and Hatches
- Drop in Wood Framed Companionway Screen
- Origo 2-Burner Stovetop
- Upgraded Leatherette Upholstery in Saloon
- Private Marine Head with Holding Tank
- Ice Box
- Built-in Dinnerware Storage
- Miscellaneous Dishes, Cutlery & Glasses

Sails and Sail Handling Equipment

The Island Packet 27 has a high aspect cutter rig with furling Genoa and Staysail. The Main is fully battened.

- The Staysail is mounted on a Furlex Furler and a self tacking boom with outhaul and sheet led aft to the cockpit.
- The Genoa is on a Cruising Design Furling System
- 2 - Whisker Poles
- Metal Mast Step Climbing Kit
- Boom Vang
- 2 Cockpit Hung Line Bags
- Mainsail Traveller mounted on Coach Roof
- Lewmar 16 ST, 2-Speed Primaries
- 2 Coach Roof mounted Lewmar 8 Winches for Main Halyard & Sheet and Staysail Sheet and Outhaul
- Each Coach Roof Winch is served by two Schafer Rope Clutches
- Lewmar 8 on Mast for Genoa and Staysail Halyards
- Rig Tension Gauge
- Winch Servicing Kit

Electrical 110 and 12 Volt Systems

The Island Packet 27 is equipped with both a 12Volt Ship and 120Volt Shorepower Systems with individual electric panels

- Battery Charger
- Separate Engine and House Battery Banks
- 50' Shorepower Cord
- 110V Receptacles and Lights throughout Triton.
- All Required 12V Running Lights

Navigation Equipment

- Nexus Depthsounder and Knotmeter
- Raymarine ST60 Wind Instrument
- Autohelm ST4000 Autopilot
- SiTex 1000 Radar, Chartplotter and GPS
- Weems & Plath Barometer
- ICOM VHF Radio
- Spare VHF
- Kenwood AM/FM/Cassette/CD Player with Cabin and Cockpit Speakers
- Kenwood Compac Disc Auto Changer

Hull Construction and Equipment

The IP27 has a Solid Glass Hull with an integral keel and bow sprit. She has a spade rudder. The Decks are synthetically cored. Diamond Non-Skid provides safe footing.

Triton has a Custom Swim Platform with Modified Swim Ladder

- Dodger & Bimini
- USCG Safety Package including MOB Stern Rail Mounted System
- 2 Anchors each with chain/rope rodes
- Cockpit Teak Table & Drink Holder
- Cockpit Cushions
- Dock Lines and Fenders (6)
- 2 Boathooks (1 Floating)
- 2 Fishing Poles

Mechanicals

- Yanmar 2-Cylinder Fresh Water Cooled 18HP Diesel
- Mechanical Bilge Pump
- Electric Bilge Pump with Automatic and Manual Controls
- 3-Blade Feathering Propeller

Exclusions

Owner's personal belongings.

Disclaimer

The Company offers the details of this vessel or yacht in good faith but cannot guarantee or warrant the accuracy of this information nor warrant the condition of the vessel. A buyer should instruct his representatives, agents, or his surveyors, to investigate such details as the buyer desires validated. This vessel or yacht is offered subject to prior sale, price change, or withdrawal without notice.

PHOTOS

Starboard Stern & Transom & Swim Platform



Spacious Vee Berth with overhead Hatch



Big Well Ventilated Head



Starboard Side Saloon w/Table Stored



Looking from Saloon into Vee Berth



Galley



Instruments & Electric Panel



Looking from Saloon into Quarter Berth



Deck Forward of Companionway

3 Cylinder Yanmar Diesel



Foredeck

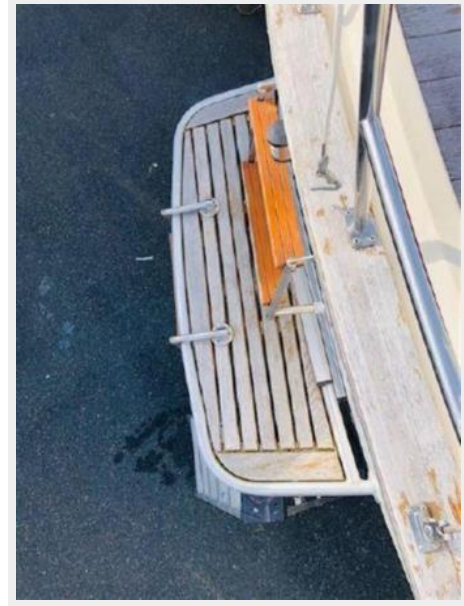


Large and Comfortable Cockpit



Custom Swim Platform & Ladder

Cockpit Engine Panel & Storage



Spade Rudder, Feathering Propeller



CONTACTS

Andrey Shestakov, leading yacht broker of the sales department of Shestakov Yacht Sales Inc. Shestakov Yacht Sales Inc., the official representative of the Miami/Fort Lauderdale FL headquarters.

Contact details

Email: andrey@shestakovyachtsales.com

Web: shestakovyachtsales.com/en/

Telephones

USA: +1(954)274-4435

Office hours

Monday – Saturday: **9:00 - 21:00** EDT

Sunday: **closed**

Address



Harbour Towne Marina, 850 NE 3rd St,
STE 213, Dania, FL 33004