

TRITON — ISLAND PACKET YACHTS



Судостроитель:
ISLAND PACKET YACHTS

Год постройки: 1988

Модель: Крейсерская яхта

Цена: **ЦЕНА ЯХТЫ ПО ЗАПРОСУ**

Местонахождение: United States

Длина общая: 30' 0" (9.14m)

Ширина: 10' 6" (3.20m)

Макс. осадка: 3' 8" (1.12m)

Купить Triton — ISLAND PACKET YACHTS а также выбрать подходящую вам яхту из нашего каталога яхт вам поможет опытный яхтенный брокер Андрей Шестаков. На сегодняшний день компания Shestakov Yacht Sales Inc. имеет большое количество яхт в собственном списке продаж, а также тесно сотрудничает со всеми крупными яхтенными производителями по всему миру.

Для того чтобы купить яхту Triton — ISLAND PACKET YACHTS а также проконсультироваться по любому вопросу связанному с покупкой, продажей, чартером яхт позвоните по телефону **+7(918)465-66-44**.

ОГЛАВЛЕНИЕ

ОГЛАВЛЕНИЕ	2
ХАРАКТЕРИСТИКИ	4
Обзор	4
Основная информация	4
Размеры	4
Скорость, вместимость и масса	4
Размещение	5
Корпус и палуба	5
Информация о двигателе	5
ПОДРОБНОЕ ОПИСАНИЕ	6
Overview	6
Исключения	9
Отказ от ответственности	9
ФОТОГРАФИИ	10
Spacious Vee Berth with overhead Hatch	10
Starboard Stern & Transom & Swim Platform	10
Big Well Ventilated Head	10
Starboard Side Saloon w/Table Stored	10
Looking from Saloon into Vee Berth	11
Galley	11
Instruments & Electric Panel	11
Looking from Saloon into Quarter Berth	11
Deck Forward of Companionway	12
3 Cylinder Yanmar Diesel	12
Foredeck	12
Large and Comfortable Cockpit	12
Custom Swim Platform & Ladder	13
Cockpit Engine Panel & Storage	13

Spade Rudder, Feathering Propeller	13
КОНТАКТЫ	14
Контактная информация	14
Телефоны	14
Время работы	14
Адрес	14

ХАРАКТЕРИСТИКИ

Обзор

AC - CUSTOM SWIM PLATFORM - FURLING HEADSAIL - UPGRADED UPHOLSTERY & MUCH MORE!!

The Island Packet 27 is a very large small cruiser with much more elbow room than you would expect. "Triton" will take you just about anywhere you would want to go in comfort and safety and with surprising performance. The 27 is the perfect family cruiser with room to sleep 6. She has a nice sized head with hot/cold pressure water, complete galley, and a fold-up table that is not crowding the salon after dinner. Her cockpit is huge with room to sail, entertain or snooze. And, Island Packets hold their value so well. This 27 is equipped and ready to provide a great getaway. Call now for more pictures and information.

Основная информация

Тип судна: Крейсерская яхта

Модельный год: 1988

Год постройки: 1988

Страна: United States

Размеры

Длина общая: 30' 0" (9.14m)

Длина по ватерлинии: 24' 3" (7.39m)

Ширина: 10' 6" (3.20m)

Макс. осадка: 3' 8" (1.12m)

Трапы: 38' 6" (11.73m)

Длина привального бруса: 27' 0" (8.23m)

Скорость, вместимость и масса

Водоизмещение: 8000 Pounds

Вместимость воды: 31 Gallons

Вместимость сточного бака: 12 Gallons Объем топливного бака: 19 Gallons

Размещение

Всего кают: 2

Всего ком. состава: 1

Корпус и палуба

Материал корпуса: Fiberglass

Информация о двигателе

Двигатели: 1

Производитель: Yanmar

Модель: 2GM

Тип двигателя: Inboard

Тип топлива: Diesel

ПОДРОБНОЕ ОПИСАНИЕ

Overview

Accommodations and Walkthru

There is a comfortable Vee Berth forward with a large opening hatch. Aft of which on starboard is the roomy Head with commode, sink, shower, wet locker, and opening port. Across on port from the head is a hanging locker. Continuing aft is the Main Saloon. There is a cleverly designed bulkhead hung table on Starboard that is out of the way when not needed making the Saloon seem so much larger than most boats. The starboard settee converts to form a double berth. The settee on port is long enough to allow an adult to sleep. The Galley is aft of the saloon on port with sink, ice box, and two burner alcohol stove. The Companionway rises over the Engine Compartment with an access door under the steps. It is centered and divides the Galley and the Quarterberth entrance. The Quarterberth is large enough for a couple to sleep comfortably. The "L" shaped Galley is on Port featuring a sink, 2-burner non-pressure alcohol stove-top plus good counter space and storage. Finally, the Cockpit is long enough to accommodate your sailing crew, your guests and has the room for a lazy afternoon nap. The IP27 is a very comfortable and safe pocket cruiser that seems much larger than 27' implies.

- Air Conditioning Unit
- Hot Cold Pressure Water
- Teak & Holly Sole throughout except in Galley and Head
- Screens for all opening Ports and Hatches
- Drop in Wood Framed Companionway Screen
- Origo 2-Burner Stovetop
- Upgraded Leatherette Upholstery in Saloon
- Private Marine Head with Holding Tank
- Ice Box
- Built-in Dinnerware Storage
- Miscellaneous Dishes, Cutlery & Glasses

Sails and Sail Handling Equipment

The Island Packet 27 has a high aspect cutter rig with furling Genoa and Staysail. The Main is fully battened.

- The Staysail is mounted on a Furlex Furler and a self tacking boom with outhaul and sheet led aft to the cockpit.
- The Genoa is on a Cruising Design Furling System
- 2 - Whisker Poles
- Metal Mast Step Climbing Kit
- Boom Vang
- 2 Cockpit Hung Line Bags
- Mainsail Traveller mounted on Coach Roof
- Lewmar 16 ST, 2-Speed Primaries
- 2 Coach Roof mounted Lewmar 8 Winches for Main Halyard & Sheet and Staysail Sheet and Outhaul
- Each Coach Roof Winch is served by two Schafer Rope Clutches
- Lewmar 8 on Mast for Genoa and Staysail Halyards
- Rig Tension Gauge
- Winch Servicing Kit

Electrical 110 and 12 Volt Systems

The Island Packet 27 is equipped with both a 12Volt Ship and 120Volt Shorepower Systems with individual electric panels

- Battery Charger
- Separate Engine and House Battery Banks
- 50' Shorepower Cord
- 110V Receptacles and Lights throughout Triton.
- All Required 12V Running Lights

Navigation Equipment

- Nexus Depthsounder and Knotmeter
- Raymarine ST60 Wind Instrument
- Autohelm ST4000 Autopilot
- SiTex 1000 Radar, Chartplotter and GPS
- Weems & Plath Barometer
- ICOM VHF Radio
- Spare VHF
- Kenwood AM/FM/Cassette/CD Player with Cabin and Cockpit Speakers
- Kenwood Compac Disc Auto Changer

Hull Construction and Equipment

The IP27 has a Solid Glass Hull with an integral keel and bow sprit. She has a spade rudder. The Decks are synthetically cored. Diamond Non-Skid provides safe footing.

Triton has a Custom Swim Platform with Modified Swim Ladder

- Dodger & Bimini
- USCG Safety Package including MOB Stern Rail Mounted System
- 2 Anchors each with chain/rope rodes
- Cockpit Teak Table & Drink Holder
- Cockpit Cushions
- Dock Lines and Fenders (6)
- 2 Boathooks (1 Floating)
- 2 Fishing Poles

Mechanicals

- Yanmar 2-Cylinder Fresh Water Cooled 18HP Diesel
- Mechanical Bilge Pump
- Electric Bilge Pump with Automatic and Manual Controls
- 3-Blade Feathering Propeller

Исключения

При продаже яхты исключаются личные вещи владельца.

Отказ от ответственности

Компания предоставляет описание судна или яхты добросовестно, но не может гарантировать точность этой информации, а также не ручается за техническое состояние. Покупатель должен проинструктировать своих агентов или оценщиков исследовать представленную информацию более подробно, по собственному желанию. Продажа судна или яхты, изменение цены или снятие с продажи будет происходить без предварительного уведомления.

ФОТОГРАФИИ

Starboard Stern & Transom & Swim Platform



Spacious Vee Berth with overhead Hatch



Big Well Ventilated Head



Starboard Side Saloon w/Table Stored



Looking from Saloon into Vee Berth



Galley



Instruments & Electric Panel



Looking from Saloon into Quarter Berth



3 Cylinder Yanmar Diesel



Deck Forward of Companionway



Foredeck

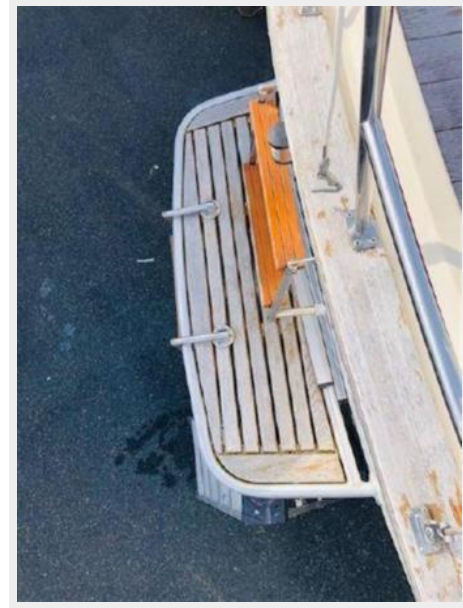


Large and Comfortable Cockpit



Custom Swim Platform & Ladder

Cockpit Engine Panel & Storage



Spade Rudder, Feathering Propeller



КОНТАКТЫ

Андрей Шестаков (Andrey Shestakov) – ведущий яхтенный брокер отдела продаж яхт и судов компании Shestakov Yacht Sales Inc. Официальный представитель Shestakov Yacht Sales Inc. для русскоговорящих клиентов в центральном офисе компании в Майами/Форт Лодердейл/Флорида/США.

Контактная информация

Email: andrey@shestakovyachtsales.com

Web: shestakovyachtsales.com

Телефоны

Краснодарский край: **+7(918)465-66-44**

США, Майами, Флорида: **+1(954)274-4435**

Время работы

Понедельник – Суббота: **9:00 - 21:00**
EDT

Воскресенье: **Закрито**

Адрес



Harbour Towne Marina, 850 NE 3rd St,
STE 213, Dania, FL 33004