

BROKEDOWN PALACE — HORIZON



Builder: HORIZON

Year Built: 2017

Model: Cruiser

Price: PRICE ON APPLICATION

Location: United States

LOA: 60' (18.29mm)

Beam: 24.5

Min Draft: 4' 6" (1.37mm)

Max Draft: 5' (1.52mm)

Cruise Speed: 18 Knots Kts. (21 MPH)

Max Speed: 22 Knots Kts. (25 MPH)

Our experienced yacht broker, Andrey Shestakov, will help you choose and buy a yacht that best suits your needs **BROKEDOWN PALACE — HORIZON** from our catalogue. Presently, at Shestakov Yacht Sales Inc., we have a wide variety of yachts available on our sale's list. We also work in close contact with all the big yacht manufacturers from all over the world.

If you would like to buy a yacht **BROKEDOWN PALACE — HORIZON** or would like help answering any questions concerning purchasing, selling or chartering a yacht, please call **+1(954)274-4435**

TABLE OF CONTENTS

TABLE OF CONTENTS	2
SPECIFICATIONS	4
Overview	4
Basic Information	4
Dimensions	4
Speed, Capacities and Weight	4
Accommodations	5
Hull and Deck Information	5
Engine Information	5
PHOTOS	6
HELM	6
HELM	6
FLY BRIDGE	6
FLY BRIDGE BAR	6
BRIDGE DECK BBQ	6
BRIDGE DECK	6
AFT DECK	7
PORT ENGINE COMPARTMENT	7
AFT DECK BAR ARRANGEMENT	7
AFT DECKM	7
PORT ENGINE COMPARTMENT AFT	7
MECHANICAL	7
ENGINE HOURS	8
HULL ID# PCC60616H718	8
OPEN SALON FLOORPLAN	8
ISLAND GALLEY	8
SALON	8
SALON LOOKING AFT	9

HALLWAY TO MASTER	9
MASTER WITH KING BED	9
WINDOW IN MASTER	9
MASTER BATHROOM	9
MASTER BATHROOM	9
MASTER SHOWER	9
VIP STATEROOM	10
VIP STATEROOM	10
VIP BATHROOM	10
TWIN SATEROOM	10
CONTACTS	11
Contact details	11
Telephones	11
Office hours	11
Address	11

SPECIFICATIONS

Overview

By definition, Quintessence means the best of the best in class.....The epitome of what should be.

This late model 60PC is all of that plus some. She has less than 500 hours on her Cummins QSM11's and is loaded with equipment. The 2 time Horizon PC owners are in the process of building their 3rd boat which make this opportunity available to the market. Quintessence is the open interior floorpan with 3 staterooms and an expansive salon. If you are into cruising on an opulent scale, please take a look and you will not be disappointed.

Basic Information

Category: Cruiser

Sub Category: Cruiser

Model Year: 2018

Year Built: 2017

Country: United States

Dimensions

LOA: 60' (18.29mm)

Beam: 24.5

Min Draft: 4' 6" (1.37mm)

Max Draft: 5' (1.52mm)

Speed, Capacities and Weight

Cruise Speed: 18 Knots Kts. (21 MPH)

Cruise Speed Range: 500

Max Speed: 22 Knots Kts. (25 MPH)

Max Speed Range: 250 Kts.

Gross Tonnage: 40 Pounds

Water Capacity: 250 Gallons

Holding Tank: 120 Gal Gallons

Fuel Capacity: 1000 Gal Gallons

Accommodations

Total Cabins: 3

Sleeps: 6

Total Heads: 3

Hull and Deck Information

Hull Material: Composite Fiberglass

Deck Material: Teak and Fiberglass

Hull Configuration: Catamaran

Hull Color: White

Hull Designer: Angelo Lavranos

Exterior Designer: Peter Gimpell

Interior Designer: Leigh Ford

Engine Information

Engines: 2

Manufacturer: Cummins

Engine Type: Inboard

Fuel Type: Diesel

PHOTOS

HELM



HELM



FLY BRIDGE



FLY BRIDGE BAR



BRIDGE DECK BBQ



BRIDGE DECK



AFT DECK



PORT ENGINE COMPARTMENT



AFT DECK BAR ARRANGEMENT



AFT DECKM



PORT ENGINE COMPARTMENT AFT



MECHANICAL



ENGINE HOURS



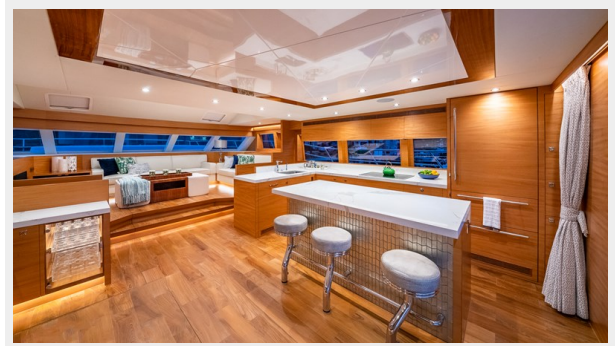
HULL ID# PCC60616H718



OPEN SALON FLOORPLAN



ISLAND GALLEY



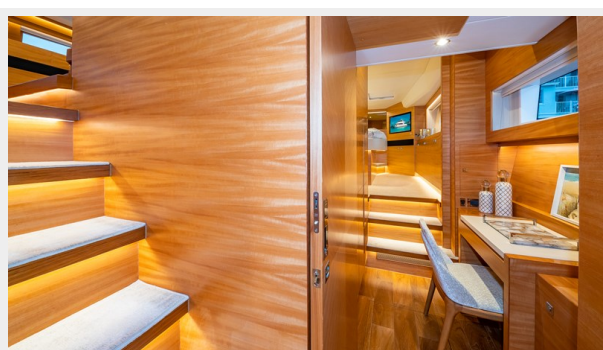
SALON



SALON LOOKING AFT



HALLWAY TO MASTER



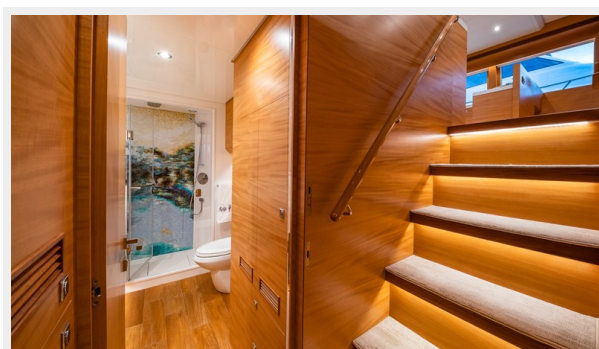
MASTER WITH KING BED



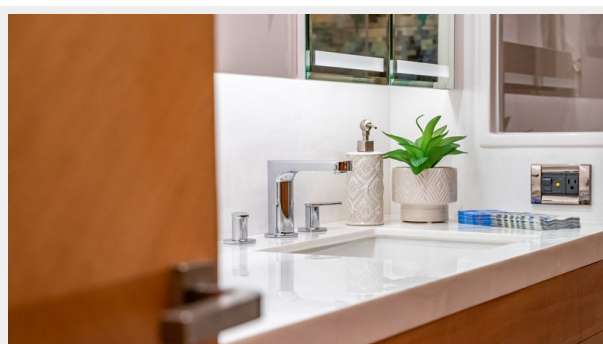
WINDOW IN MASTER



MASTER BATHROOM



MASTER BATHROOM



MASTER SHOWER



VIP STATEROOM



VIP STATEROOM



VIP BATHROOM



TWIN SATEROOM



CONTACTS

Andrey Shestakov, leading yacht broker of the sales department of Shestakov Yacht Sales Inc. Shestakov Yacht Sales Inc., the official representative of the Miami/Fort Lauderdale FL headquarters.

Contact details

Email: andrey@shestakovyachtsales.com

Web: shestakovyachtsales.com/en/

Telephones

USA: +1(954)274-4435

Office hours

Monday – Saturday: **9:00 - 21:00** EDT

Sunday: **closed**

Address



Harbour Towne Marina, 850 NE 3rd St,
STE 213, Dania, FL 33004