

ENDLESS LOVE — LAZZARA



Builder: LAZZARA

LOA: 84' 0" (25.60m)

Year Built: 2009

Model: Motor Yacht

Price: PRICE ON APPLICATION

Location: United States

Our experienced yacht broker, Andrey Shestakov, will help you choose and buy a yacht that best suits your needs **ENDLESS LOVE — LAZZARA** from our catalogue. Presently, at Shestakov Yacht Sales Inc., we have a wide variety of yachts available on our sale's list. We also work in close contact with all the big yacht manufacturers from all over the world.

If you would like to buy a yacht **ENDLESS LOVE — LAZZARA** or would like help answering any questions concerning purchasing, selling or chartering a yacht, please call **+1(954)274-4435**

TABLE OF CONTENTS

TABLE OF CONTENTS	2
SPECIFICATIONS	9
Overview	9
Basic Information	9
Dimensions	10
Accommodations	10
Hull and Deck Information	10
Engine Information	10
DETAILED INFORMATION	11
Walk through; Highlights and Upgrades	11
Main Salon & Dining	12
Galley & Dinette	12
Staterooms	13
Pilothouse Electronics & Equipment	14
Flybridge Electronics	15
Flybridge Outfitting	15
Aft Deck Equipment	16
Main Deck Outfitting	16
Mechanical	17
Recent Upgrades & Service	18
Laundry Equipment	18
Disclaimer	18
Exclusions	19
Disclaimer	19
PHOTOS	20
2	20
3	20
4	20

5	20
6	20
7	20
8	21
9	21
10	21
11	21
12	21
13	21
14	21
15	21
16	22
17	22
18	22
19	22
20	22
21	22
22	22
23	22
24	23
25	23
26	23
27	23
28	23
29	23
30	23
31	23
32	24
33	24

34	24
35	24
36	24
37	24
38	24
39	24
40	25
41	25
42	25
43	25
44	25
45	25
46	25
47	25
48	26
49	26
50	26
51	26
52	26
53	26
54	26
55	26
56	27
57	27
58	27
59	27
2	27
60	27
3	27

61	27
4	28
5	28
62	28
6	28
63	28
7	28
8	28
64	28
9	29
10	29
65	29
11	29
12	29
13	29
66	29
14	29
15	30
67	30
16	30
68	30
17	30
69	30
18	30
19	30
70	31
20	31
71	31
21	31

72	31
22	31
73	31
23	31
24	32
25	32
26	32
27	32
28	32
29	32
30	32
31	32
32	33
33	33
34	33
35	33
36	33
37	33
38	33
39	33
40	34
41	34
42	34
43	34
44	34
45	34
46	34
47	34
48	35

49	35
50	35
51	35
52	35
53	35
54	35
55	35
56	36
57	36
58	36
59	36
60	36
61	36
62	36
63	36
64	37
65	37
66	37
67	37
68	37
69	37
70	37
71	37
72	38
73	38
CONTACTS	39
Contact details	39
Telephones	39
Office hours	39

Address

39

SPECIFICATIONS

Overview

Year Built 2009, Delivered NEW Summer of 2010, to current Owner.

Yacht is Pristine, Turn Key, and ready to go anywhere you desire. Its Size, Performance, Accommodations and Beauty, sets the bar high for any/all competitors. The excitement of just being aboard her, fades to Amazement when you run her to your favorite destination.

LAZZARA Innovation Impresses again. Modeled after the eighty footer, the Lazzara 84 expands the living accommodations for the owner by placing the crew quarters aft. You'll be hard pressed to find a more spacious yacht with these specs anywhere in the world. With this unique layout, the crew has privacy during down time and owners can accommodate up to 4 additional guests in the forward berths. Each stateroom has its own head and entertainment center; the salon includes formal dining and spacious seating; and the country kitchen style galley remains a gathering favorite. Deck space is expansive, aft deck seating can accommodate large gatherings, full walk around decks offer peace of mind walking safely to the bow seating area. Huge Flybridge with Jacuzzi and space to carry tender and toys.

Despite over 50 years of boat building tradition spanning 3 generations of the family, Lazzara's loyal ownership helped make the next designs better. The LAZZARA 84 is an extraordinary result of this uncommon commitment to excellence.

A very modern Interior design with a Rich Walnut finish, wood floors through the Salon and Galley areas.

This is a Yacht that will not last long on the Market. (1) owner boat, Beautifully appointed, open check book care from a very knowledgeable owner. Many upgrades listed in these pages, to include, 2018 Complete NEW Paint Job, and CAT recent service, with 5 YEAR WARRANTY.

Basic Information

Category: Motor Yacht

Model Year: 2009

Year Built: 2009

Country: United States

Fly Bridge: Yes

Dimensions

LOA: 84' 0" (25.60m)

Accommodations

Total Cabins: 7

Total Heads: 7

Hull and Deck Information

Hull Material: Fiberglass

Engine Information

Engines: 2

Manufacturer: CAT

Model: C32

Engine Type: Inboard

Fuel Type: Diesel

DETAILED INFORMATION

Walk through; Highlights and Upgrades

Upon Boarding from the Aft Deck, there is a varnished Teak Dining Table with 4 chairs and a bench settee that seats 5. On the Port side you will find a custom Cabinet /Bar same varnished teak top as table with Ice maker, sink and refrigerator, along with an enclosed Flat screen TV above. A Docking station is enclosed on the starboard side.

Entering through the sliding glass doors, a Gorgeous Custom interior, huge windows port and starboard let in amazing natural light. Very Modern dark Walnut wood cabinet paneling and flooring, contrast beautifully with Bright natural light, white and leather furniture. Forward in the salon is the dining area with table and seating for 6. Plenty of storage for flat ware and stem ware in adjacent cabinets and drawers.

Moving forward a day head is located to starboard, and the Country Kitchen style galley is to port with a large center island, a settee and table that seats 4-5 guests. Plenty of windows and natural light. Starboard of the settee is the lower helm station, with a sliding door exit that leads to starboard deck space, access to the bow and stern.

Between the settee and lower helm are stairs that lead to the forward two staterooms, w/in-suite heads. In the foyer here, are a small desk/office space, and a washer/dryer located in closet on the starboard side.

Three other staterooms including the Master are found down a separate set of stairs from the Main Salon. All three staterooms have in-suite heads. The foyer/companionway here also has a full size washer and dryer located behind doors.

The flybridge can be accessed from an inside staircase located between the salon and galley, or by teak stairs from the aft deck. Aft of the hardtop, port side is a settee with teak table, and to starboard is a Hot top with cushioned top/cover. Under the hardtop, port side is a Grill, Bar, with teak top, 3 mounted stidd chairs, and ice maker, refrigerator/freezer. To starboard is another settee with teak table top, under cover of the hardtop. Aft is a large space for tender storage with a 1500 Lb. davit.

Crew quarters are entered thru the transom door which consists of the Captains cabin with full size berth and a second cabin with single berth, and a shared head. This area continues to access the walk in/stand up engine room.

Recent Updates/Upgrades

Complete Yacht Painted 2018

- 2000 HR CAT Service Completed with a 5 Year Warranty
- New Garmin Electronics

- Spare Set of Props
- New Soft Goods Exterior w/Covers
- 3 Sided Enclosure for the Hardtop
- Aft deck Bar unit with Sink and refrigerator, Teak Top; canvas cover included
- All Exterior Tables in Teak
- High Gloss Walnut Interior finish (in lieu of standard cherry finish)
- Dive Air Compressor, installed
- All Windows/topsides, were pulled, rebedded, and sealed.

Main Salon & Dining

Main Salon

- High Gloss Walnut interior finish (In lieu of standard Cherry finish)
- Sofa with Storage
- 3 end tables and lounge chairs
- Coffee table
- Custom window treatments
- recessed ceiling low voltage LED lighting
- Direct and Indirect LED lighting
- Double Stainless Steel curved sliding glass doors to Aft Deck.
- Majilite overhead panels with foam backing
- telephone outlet
- Receptacle: 120 volt
- Surround sound Stereo/CD/DVD player
- 42" LCD HDTV
- Denon Receiver
- Direct TV HDTV receiver
- Side Windows 3/8" laminated and chemically strengthen. recently inspected and all seals replaced new.

Dining Salon

- Overhead ceiling treatment
- Oval Table w/six chairs
- Walnut credenza on a mirrored forward bulkhead
- Ample Storage for Stem ware and flat ware.

Galley & Dinette

- Walnut Wood Plank flooring carried in from Salon.
- Custom "Country Kitchen" styled with Island sink arrangement
- Granite Counter tops

- Built in Pantry
- Skylight with Chemically Strengthened glass
- Brushed stainless steel appliances; side by side Refrigerator/Freezer, Four burner 27" Oven, electric range w/built in cooktop, microwave/convection oven, Dishwasher, Trash compactor
- Grohe Double stainless steel sink and single lever faucet with sprayer and instant hot water dispenser.
- Additional 3 drawer refrigerator/freezer drawers to starboard
- Wine cooler/chiller, plus ice-maker
- Walnut cabinets with Island in High gloss white
- recessed LED lighting
- Raised Dinette with curved seating for 6 Granite counter top
- Very large storage locker accessed from top of dash.
- (3) three forward windows (windshield) trimmed window mullions in Walnut
- Majilite overhead panels w/foam backing
- Stairwell down to forward Staterooms
- 20" LCD TV wall bracket mounted, ceiling mounted speakers, plus subwoofer
- Starboard sliding door to side deck

Staterooms

Master Stateroom

- Walk-around King-size bed with Custom mattress, padded headboard and storage
- Walnut veneered night stands, port and Starboard Walnut veneered armories, port and starboard Built in settee, upholstered love seat
- Desk w/seating
- Overhead ceiling treatment
- walk in closet w/wood valance, private mounted Safe
- Direct and indirect lighting
- (2) fixed elliptical port lights
- Private access to Master head
- Decorative sconces, Telephone and electrical outlets
- Separate storage/luggage closet accessed from closet
- Carpet
- 42" LED TV, Denon All-In-One Surround sound w/DVD High Definition Sat Receiver, ceiling mount speakers, and sub-woofer.

Port VIP Stateroom

- Each Stateroom has a Queen size walk around berth
- Padded Headboard
- Wood bed base with Storage drawers below
- Walnut wood throughout

- Walnut veneered LG 15" flat screen TV
- Outboard storage/stereo cabinets and open shelving with mirror
- Denon All-in-one Surround sound processor CD/DVD High Definition stereo system, independent Satellite receiver. IR Controlled, Ceiling mount speakers
- Neutral Beige Plush Carpeting
- Hanging Cedar lined closet with mirror door
- Indirect Lighting
- Fixed Elliptical Port light
- Private access in-suite head

Starboard VIP Stateroom

- Identical to Port Stateroom.

Guest Stateroom, Forward VIP Port

- Full size Berth with storage below
- Walnut veneered wood through out
- Neutral Beige Plush Carpeting
- Office/Dresser cabinet with Chair
- Indirect lighting
- Hanging Cedar lined Closet with mirrored door
- LG 15" flat screen TV, Denon Stereo with DVD/CD/Satellite receiver
- telephone /computer outlets
- Private access to en-suite head

Guest Stateroom, Forward Bow

- Upper and Lower berths with drawer storage below
- Walnut veneered throughout
- Neutral Beige Plush carpeting
- Hanging Cedar lined closet with mirrored door
- Private access to en-suite head
- LG 15" flat screen TV, Denon Stereo with DVD/CD/Satellite receiver

Crew Quarters

- Captains Cabin has a full size berth
- Crew Cabin has a single berth
- Walnut veneered wood throughout
- Storage
- LG 15" flat screened TV, flush mounted, Denon Stereo with DVD/CD/Satellite receiver.
- Shared Head

Pilothouse Electronics & Equipment

- GARMIN GPS map 7612 /14" display
- 14" LCD display to provide video display of the "ISIS System", CCTV
- Electronic Engine Controls w/clutches, throttles, and Bow and stern thrusters
- Elbex Dome Camera
- Simrad AP25 Autopilot
- Simrad D RS87 GMDSS radio telephone
- Simrad AR78 Compass
- B&G HS2000 speed/depth/temp hydra system
- B&G wind and speed indicator
- Elbex Dome Camera system
- ACR 406 category 1, Class 1 EPIRB
- SATCOM; KVH F-55 Tracphone F55 Immarsat Fleet Satellite Comm's System (provides Voice and Internet both in MPDS and HSD; wireless access throughout boat.
- (3) Wipers with controls

Flybridge Electronics

- (3) Large Garmin Monitors (**NEW**)
- TRAC Stabilizer controls
- Cat Marine Power Monitors
- Electronics engine controls w/clutches, throttles, and bow/stern thruster
- Simrad AR 78 Compass
- FLIR Controls
- Simrad AP 25 Auto Pilot
- Icom 504
- ISIS Monitoring System
- SAT radio
- Simrad RS87 GMDSS Radio telephone
- B&G HS 2000 speed/depth/temp/system
- ACR 406 cat. Class 1 EPIRB

Flybridge Outfitting

- Fully instrumented helm console
- Custom designed 316 stainless steel framed windscreen
- One Stidd single helm chair
- One Stidd double helm chair
- Back up Emergency Engine controls
- Access to aft deck via molded fiberglass stairway with handrail.
- Sliding hatch/stairs to interior main deck level.
- Outboard seating group, split into port and starboard sections with Varnished Teak tables for each section.

- Peninsula shaped bar with Varnished Teak top, sink, and electric grill on the port side.
- Refrigerator under aft bar counter
- Three swivel stools at the bar.
- Varnished Teak counter forward of the bar on the port side with Icemaker underneath.
- Jacuzzi tub with Sun pad lounging area over top of tub.
- Storage for yacht dinghy
- Hydraulic Davit with remote control, starboard side concealed into styling line, with telescopic and power rotation features, 1500 lb capacity.
- Stainless steel dingy chocks convert to aft bridge deck guard rails.
- Fresh water wash down.
- Life raft (Viking Life 8 person) in storage compartment port aft behind Jacuzzi.

Aft Deck Equipment

- Aft Deck Docking Controls, Starboard side
- Varnished teak table
- Built in Seating
- Teak Cap rail, with stainless steel standoffs above settee seat back
- Engine removal hatch
- Access to transom and Hydraulic swim platform
- Aft Deck bulworks
- Access to to flybridge via molded fiberglass stairwell
- Hinged glass w/wood boarding doors, Port and Starboard
- Lighting and Speakers under hardtop
- Access to walk around fiberglass decks
- Teak Aft Deck and Swim Platform, and stairs to flybridge
- Telephone outlet
- Mounted camera
- Custom designed Stainless Steel Cleats with Stainless hawsers
- fresh air engine intake vents
- Stainless Steel Hardtop compression posts
- Dockside water connection
- 20" LCD TV enclosed and mounted overhead Bar
- Custom Hydraulic Swim Platform
- Access to Captain and crew quarters
- Access to Shore Power inlet

Main Deck Outfitting

- Duel Maxwell electric, vertical windlasses with chain stopper and wash down
- Duel Stainless Steel Anchor chutes
- Two (2) Stainless Steel 80 lbs Anchors

- (1) 200 ft and (1) 100 ft Anchor rode and chain 3/8" BBB high test hot galvanized steel.
- Stainless Steel rails along Main Deck
- Hinged rails forward for side boarding
- Bow, Spring, Stern Cleats, Stainless Steel, custom designed.
- Lighted for-deck, with Sunpad, pneumatic assisted opening w/storage underneath.
- Deck Fills; water and waste removal
- Fuel fill aft
- Burgee staff, custom fabricated stainless steel with burgee flag
- Fordeck washdown
- Hawse pipes with stainless steel guideposts
- Dockside water connection; one (1) forward one (1) aft
- forward hatch to bow chain.
- Sunbrella Weather Covers, **NEW** all exterior cushions, and tables.

Mechanical

- Caterpillar C32 1650HP each 2600 HRS, Electronic Controlled, Fresh water-cooled w/Reduction ZF Gears /2.467:1 ratio
- Two (2) Onan 27.5 KW 240VAC/60Hz single phase, with sound enclosures.
- Engine fitted with alternator and muffler
- American TRAC Hydraulic stabilizers (2) fins 20 HP
- Mechanical gauges on engines
- Underwater Engine exhausts with idle by-pass
- 220 Volt compressors with receiver tank for toilets and sumps
- Bronze Sea Cocks with underwater bronze thru hulls
- Brownies Dive Compressor and reel system
- Compressed Air service outlet in engine room
- 1400 Gallon/day water maker, Sea Recovery
- All Primary machinery and equipment resiliently mounted
- Lower deck soles vibration isolated
- Engine powered assisted hydraulic steering system
- Stainless steel hydraulic lines
- Stainless steel rudder stocks
- Custom twin bronze airfoil rudder system
- 100 amp / 240 VAC /60 HZ Service
- 100' - 100 amp 240 VAC shore power cord, starboard aft
- automatic Power Cable reel / 24 VDC
- Isolation transformer - 24 KVA
- Shore power "Smart Y" Box.
- AC and DC Master Control distribution panel located in Engine room with four (4) sub panels located within the Yacht.
- Drip-less shaft seals, Bronze "I" strut system, Bronze rudders
- (2) Frequency controlled Vane axial engine room exhaust fans

- Double Acoustical and Thermal Insulation in Engine compartment
- Air Conditioning and heat with digital controls
- 3HP 240 volt main bilge, manifold to three bilges
- (3) 24 volt bilge pumps, one per bilge compartment
- Fire Protection System
- Fresh water outlet in Engine Room
- Center-line fuel tank, fiberglass, Hetron fire retardant resin, 2000 gals, US
- Manual and electronic tank level indicators w/high and low alarms
- Fuel lines, aircraft type, solid and flexible tubing, stainless steel grade.
- Oil Changing System for Engines and Generators, with quick connect drain fittings, on engines and generators
- Oil Reserve tank 24 gallons used / 24 Gallons New
- Five (5) bladed fixed pitch Bronze propellers **WITH Ready to Go SPARES (2)**
- Cruisair A/C Systems, insulated copper piping supply and return lines.
- Central Vacuum system 120 volt
- Headhunter Marine Toilet System, 200 gal holding tank.
- 40 gal Water Heater
- Pressurized 220 volt water system, 400 Gal Tank, polyethylene, FDA Approved, Electronic tank level indicator with low and high alarms.

Recent Upgrades & Service

- CAT 2000 Hr Complete Service with Purchased, 5 year warranty.
- Generators serviced
- Hull Painted 2017/2018, Water line up
- ALL Glass windows replaced NEW
- Stabilizers Serviced
- All Exteriors cushions replaced new
- NEW Garmin Electronics
- FLIR added
- Second set of props, (Spare Props)
- Spare Parts list to extensive to list here.

Laundry Equipment

Main Laundry

- Washer (2) forward and Aft Locations, Bosch, Full size
- Dryer (2) Forward and Aft Locations, Bosch, Full size

Disclaimer

The Company offers the details of this vessel in good faith but cannot guarantee or warrant the accuracy of this information nor warrant the condition of the vessel. A buyer should instruct his agents, or his surveyors, to investigate such details as the buyer desires validated. Hours listed may vary from actual hours due to recent use. Purchaser is encouraged to verify hours prior to purchase. This vessel is offered subject to prior sale, price change, or withdrawal without notice.

Exclusions

Owner's personal belongings.

Disclaimer

The Company offers the details of this vessel or yacht in good faith but cannot guarantee or warrant the accuracy of this information nor warrant the condition of the vessel. A buyer should instruct his representatives, agents, or his surveyors, to investigate such details as the buyer desires validated. This vessel or yacht is offered subject to prior sale, price change, or withdrawal without notice.

PHOTOS

2



3



4



5



6



7



8



9



10



11



12



13



14



15



16



17



18



19



20



21



22



23



24



25



26



27



28



29



30



31



32



33



34



35



36



37



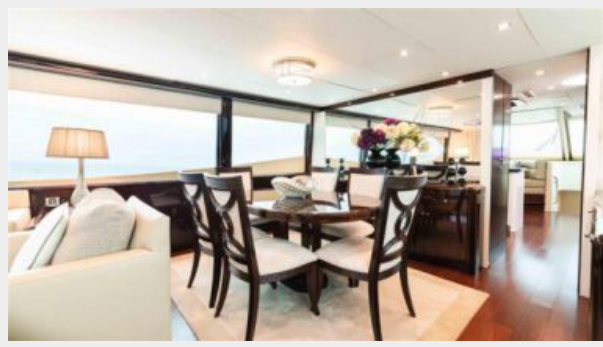
38



39



40



41



42



43



44



45



46



47



48



49



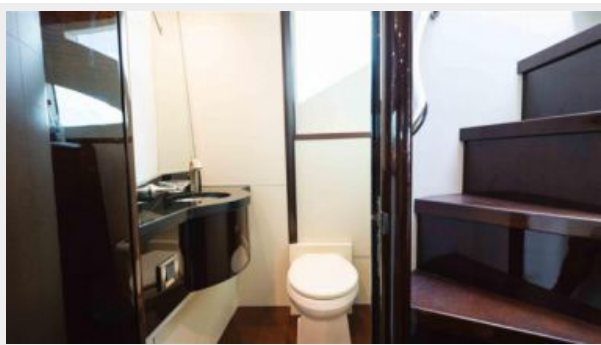
50



51



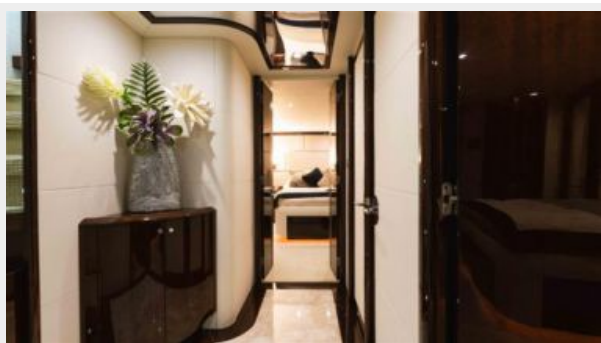
52



53



54



55



56



57



58



59



2



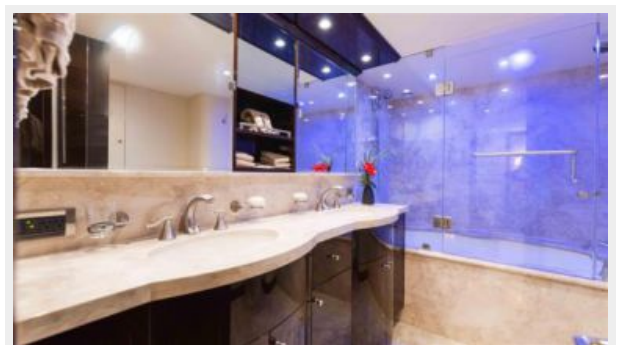
60



3



61



4



5



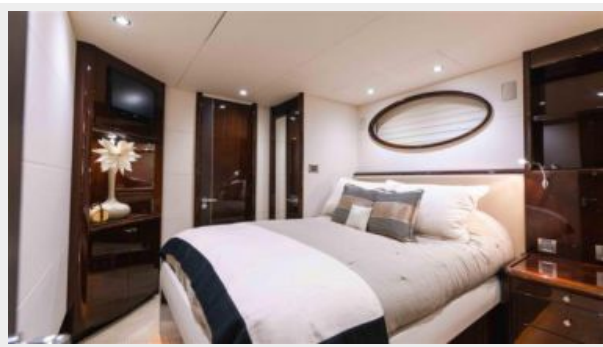
62



6



63



7



8



64



9



10



65



11



12



13



66



14



15



67



16



68



17



69



18



19



70



20



71



21



72



22



73



23



24



25



26



27



28



29



30



31



32



33



34



35



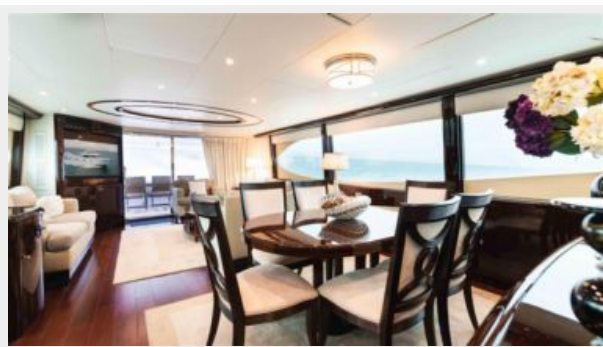
36



37



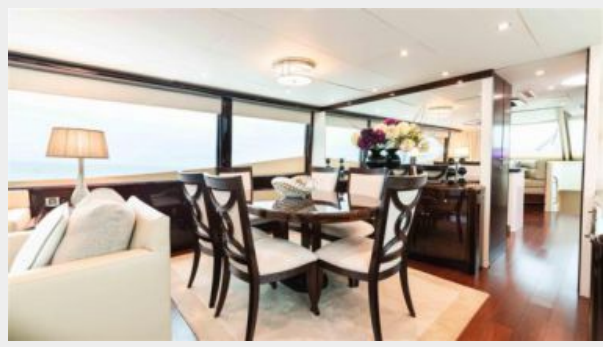
38



39



40



41



42



43



44



45



46



47



48



49



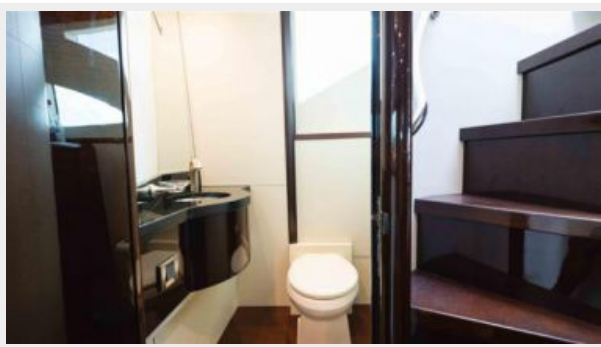
50



51



52



53



54



55



56



57



58



59



60



61



62



63



64



65



66



67



68



69



70



71



72



73



CONTACTS

Andrey Shestakov, leading yacht broker of the sales department of Shestakov Yacht Sales Inc. Shestakov Yacht Sales Inc., the official representative of the Miami/Fort Lauderdale FL headquarters.

Contact details

Email: andrey@shestakovyachtsales.com

Web: shestakovyachtsales.com/en/

Telephones

USA: +1(954)274-4435

Office hours

Monday – Saturday: **9:00 - 21:00** EDT

Sunday: **closed**

Address



Harbour Towne Marina, 850 NE 3rd St,
STE 213, Dania, FL 33004