

2020 FOUNTAINE PAJOT SABA 50 — FOUNTAINE PAJOT



Судостроитель: FOUNTAINE PAJOT

Год постройки: 2020

Модель: Катамаран

Цена: ЦЕНА ЯХТЫ ПО ЗАПРОСУ

Местонахождение: United States

Длина общая: 49' 2" (14.99m)

Ширина: 27' 9" (8.46m)

Макс. осадка: 3' 8" (1.12m)

Купить 2020 Fountaine Pajot SABA 50 — FOUNTAINE PAJOT а также выбрать подходящую вам яхту из нашего каталога яхт вам поможет опытный яхтенный брокер Андрей Шестаков. На сегодняшний день компания Shestakov Yacht Sales Inc. имеет большое количество яхт в собственном списке продаж, а также тесно сотрудничает со всеми крупными яхтенными производителями по всему миру.

Для того чтобы купить яхту 2020 Fountaine Pajot SABA 50 — FOUNTAINE PAJOT а также проконсультироваться по любому вопросу связанному с покупкой, продажей, чартером яхт позвоните по телефону **+7(918)465-66-44**.

ОГЛАВЛЕНИЕ

ОГЛАВЛЕНИЕ	2
ХАРАКТЕРИСТИКИ	4
Обзор	4
Основная информация	5
Размеры	5
Скорость, вместимость и масса	5
Размещение	5
Корпус и палуба	5
Информация о двигателе	6
ПОДРОБНОЕ ОПИСАНИЕ	7
Overview	7
Исключения	14
Отказ от ответственности	14
ФОТОГРАФИИ	16
2	16
3	16
4	16
5	16
6	16
7	16
8	17
9	17
10	17
11	17
13	17
12	17
14	18
15	18

16	18
17	18
18	18
19	18
КОНТАКТЫ	19
Контактная информация	19
Телефоны	19
Время работы	19
Адрес	19

ХАРАКТЕРИСТИКИ

Обзор

Wow! Fountaine Pajot has hit it out of the park with this boat. Fountaine Pajot has always been known for performance, but beyond that, this boat will be defined by COMFORT- with every letter in caps! This model just leaps over the competition with every new feature imaginable:

- New Upper deck lounge, adjacent to the helm station
- New foredeck lounge, much larger than competitors
- New sofa and chaise lounge in the cockpit
- New extra wide salon entrance door
- New Skylights over salon
- New master cabin separate shower
- New large forward and aft cabin windows
- New drawer style stainless refrigerators
- New sleek and stylish exterior design, coach windows and hull ports.

Timing is Everything! There has never been a better time to buy a Fountaine Pajot Catamaran:

- Extremely Favorable Euro/US Dollar Exchange Rates
- Lowest Boat Loan Interest Rates Ever-3.75%
- Tax Advantage-Second Home or Business Deductions, Section 179 Bonus Depreciation
- Income Possibilities-Excellent Demand for Catamaran Charters

Purchase to Charter:

Wish your Fountaine Pajot could pay for itself? It can, with our smart and incredibly flexible charter income programs. Your boat can generate significant income with our established partners in captained charter and bareboat charter. Unlike churn-and-burn charter programs, you have complete control over the amount of sailing time you enjoy. Plus, our unique "North/South" program allows you to use your boat in New England in the summer and in Florida, the Bahamas

or the Caribbean in the winter. You will appreciate year-round sailing opportunities and a healthy income, plus significant tax advantages. We will be glad to supply details on any of these programs.

Основная информация

Тип судна: Катамаран

Модельный год: 2020

Год постройки: 2020

Страна: United States

Размеры

Длина общая: 49' 2" (14.99m)

Ширина: 27' 9" (8.46m)

Макс. осадка: 3' 8" (1.12m)

Длина привального бруса: 50' 0"
(15.24m)

Скорость, вместимость и масса

Водоизмещение: 34612.575134 Pounds

Вместимость воды: 184.9204364 Gallons

Объем топливного бака: 248.32172888
Gallons

Размещение

Всего кают: 1

Корпус и палуба

Материал корпуса: Fiberglass

Дизайнер экстерьера: Berret/Racoupeau

Информация о двигателе

Двигатели: 2

Производитель: Volvo Penta

Модель: D2-55 CV

Тип двигателя: Sail Drive

Тип топлива: Diesel

ПОДРОБНОЕ ОПИСАНИЕ

Overview

Manufacturer Provided Description

Welcome on board the new FOUNTAINE Pajot Catamarans model, the Saba 50 !

Light, spacious, with high-level performance and in the image of her sisters ship, the SABA 50 offers you all the pleasures of the sea, both under sail and at anchor where relaxation goes hand in hand with comfort and pleasure.

The space on-board has been optimised in order to provide magnificent accommodation. The saloon and cockpit have generous storage areas, as do the passageways, and the light-filled, spacious cabins.

A genuine sunbathing lounge on the foredeck.

This is one of the special locations; for sunbathing and relaxation. Sheltered and comfortable, it also houses large storage lockers.

A splendid lounge deck

The Saba 50, elegant on the water and with high levels of performance, also offers a splendid place to relax with its carefully crafted Lounge Deck. This is integrated into the design process from the very beginning in order to give the craft its beautiful lines as well as the best possible levels of comfort, both at sea and at mooring.

Movement on board has been designed so that there is direct communication between the cockpit, the helm station and the lounge deck.

Thus the entire crew can easily move about in complete safety and without hindrance.

With 2 versions, MAESTRO or QUINTET (5 double cabins + 1 crew + 6 bathrooms), the Saba 50 is ready to sail for all your programmes...

Cockpit

- Large cockpit: 19m², Circulation without threshold towards the saloon.
- Access via the transom platforms
- Transom platform with swimming ladder (at port) & handrail
- 1 cold shower in the port platform
- GRP Bimini protecting all the cockpit
- 8 seats sofa around the table
- 1 Teck cockpit table with a capacity of 8 places (10 places in option)
- Serving hatch to the galley via sliding bay
- 1 Large storage area under the sofa
- 1 fainting sofa with large storage locker
- 1 Transom sofa with large storage locker
- 2 Sunbeds
- 1 Gas chest for 2 bottles
- Space for the liferaft under the stairs leading to helm station
- Space on starboard side for a cockpit 75L fridge
- Additionnal ventilation and lighting via 1 deck hatch
- Lighting via 2 waterproof spotlights
- Space available for a barbecue on starboard side aft of the cockpit

Accommodations

Saloon

- Accessible via a single-leaf sliding door with carpeted entrance
- Panoramic view through picture windows
- Natural lighting via 2 glass panels
- 1 veneered table
- 6 places bench seat
- Large storage boxes under the bench
- Ventilation via 2 large front opening hatches
- Main lighting system by 5 spotlights

Quintet Version

Aft Cabin

- Access from the companionway via a wooden door
- Queen-size Island Bed (1,60x2,00 m approx)
- Drawer below the bed with frontal access
- Bedside shelves
- Wardrobe
- Cupboard with shelves in it
- Ventilation via a deck hatch + 1 porthole overlooking the rear deck
- Rear panoramic window
- Large picture-window on hull side
- Curtains to all windows
- Main lighting via 2 spotlights & 2 berth lights
- 1 Bedside two-way switch
- Clothes hooks
- Lining covered ceilings

Fore Cabin

- Access from the companionway via a wooden door

- Queen-size Island Bed (1,60x2,00 m approx)
- Drawer below the bed with frontal access
- Wardrobe
- Ventilation thanks to a deck hatch & 1 porthole
- Large picture-window on hull side
- Curtains to all windows and doors
- Main lighting via 2 spotlights & 2 berth lights
- 1 Bedside two-way switch
- Clothes hook
- Lining covered ceilings

Central cabin

- Access from the companionway via a wooden door
- Queen-size bed (1,60x2,00 approx.)
- Drawer below the bed with frontal access
- Wardrobe
- Ventilation thanks to a deck hatch & 1 porthole
- Large picture-window on hull side
- Curtains to all windows and doors
- Main lighting via 2 spotlights & 2 berth lights
- 1 Bedside two-way switch
- Clothes hook
- Lining covered ceilings

Aft cabin

- Access from the cockpit through Plexiglas door including keylock
- Queen-size bed (1,60x2,00 approx.)
- Drawer below the bed with frontal access
- Wardrobe
- Cupboard with shelves in it
- Ventilation thanks to a deck hatch
- Large picture-window on hull side
- Curtains to all windows and doors

- Lining covered ceilings

Aft, central and fore bathroom

- Access via wooden door
- Washbasin with worktop
- Mirror with shelf
- Hot and cold freshwater system from mixer faucet
- Shower separated via a Plexiglas panel
- Electric drainage pump for greywater
- Mixing valve tap for shower
- Large manual marine toilet
- Storage closet with shelves under the worktop
- Clothes hooks
- Ventilation thanks to 1 deck hatch
- Lighting via 2 spotlights

Galley

- Galley opened to the outside thanks to a sliding bay
- Ventilation via 1 opening hatch above stove top
- Worktop
- Twin stainless-steel sinks
- 1 top accessed trash can, bags removed through separate door
- Pressurized hot and cold freshwater system from mixer faucet
- 1 x 4 burner stove with pan holder
- 1 stainless gas oven
- 2 large cupboards under the sinks accommodating a dishwasher (optionally)
- Front closet that can accommodate a maximum volume of 130L/34gals in

refrigeration mode or 90L/24gals in conservation mode

- 1 cutlery drawer, 2 drawer for pots & pans
- 190L cold storage volume (12V) in central “island” cabinet
- 1 large storage cupboard on the starboard side of the entrance

- 3 storage spaces underneath the floor
- 4 spotlights

Engines

- 2 Saildrive Volvo engine D2- 55CV
- 3 Blades fixed propeller
- Salt water filters
- Engine cooled via heat exchanger
- Complete engine panel and dual controls at helm station
- Hour meter

Electrics

Power system

- 2 x 115A/12V engine alternators
- 1 set starboard onboard/engine batteries of 600A/h (4 x 150 Ah)
- 1 port engine battery of 50A/h/ 800CCA
- 1 automatic back-up link and 1 Manual back-up link

12V electrical distribution panel

- General 12V distribution panel at chart table protected via circuit breakers
- Voltmeter for onboard batteries
- Spare sockets for extra equipment
- All accomodation lightings LED
- All LED lighting functions monitored by multiplexing system

Electronics

- 1 V.H.F. mast head antenna

Mast and Boom

- Mast and boom in anodized aluminum
- Complete standing rigging
- Ball bearing mainsail luff cars
- 1 tackle on mainsail halyard
- 1 topping lift
- 3 reef pennants
- 1 genoa halyard
- 1 spinnaker halyard
- Lazy-jack
- Clutches on all halyards for genoa, spinnaker and topping lift
- Clutches on reef pennants at boom exit
- 2 flag halyards
- Navigation, running and mooring lights
- Deck lighting

Sails

- Full batten CSR mainsail
- Roller genoa furler
- Genoa with UV band

Helm Station

- 1 mainsheet tackle led aft to coach roof

- 1 clutch for mainsail sheet
- 2 size 60 self tailing winches for mainsail and genoa sheets
- 1 Ball bearing mainsheet traveler
- 2 x tackle on mainsheet traveler clutches with back on roof
- 2 x genoa tracks with load block
- 2 genoa sheets
- 1 size 50 self tailing winches for main halyard and reef lines
- 1 halyard storage bag

Other Equipment

- 1 steering compass
- 3 winch handles with their 3 pockets
- Pulpit and pushpit, stanchions with upper and lower guardrails
- Pulpits with bow pulpit seats
- Access to transom
- 2 x tender davits with 1 x size 46 winch on port side
- 7 mooring cleats (2 foredeck + 2 middle + 2 astern + 1 in anchor well)
- Protection for both transom
- 6 fenders
- 2 x 50 ft long mooring lines
- 1 x 1500W electric windlass with circuit breaker protection
- Anchor fairlead under bridge deck with built-in bridle
- 1 roller on forward beam
- Net on forward beam
- 1 kit of spare parts

Исключения

При продаже яхты исключаются личные вещи владельца.

Отказ от ответственности

Компания предоставляет описание судна или яхты добросовестно, но не может гарантировать точность этой информации, а также не ручается за техническое состояние. Покупатель должен проинструктировать своих агентов или оценщиков исследовать представленную информацию более подробно, по собственному желанию. Продажа судна или яхты, изменение цены или снятие с продажи будет происходить без

предварительного уведомления.

ФОТОГРАФИИ

2



3



4



5



6



7



8



9



10



11



12



13



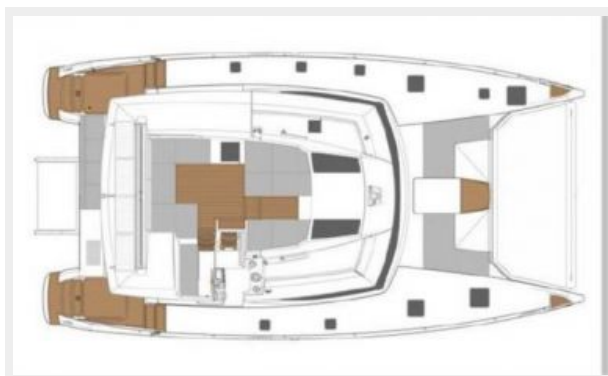
14



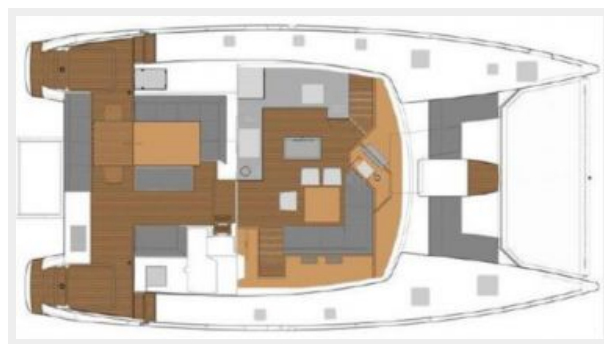
15



16



17



18



19



КОНТАКТЫ

Андрей Шестаков (Andrey Shestakov) – ведущий яхтенный брокер отдела продаж яхт и судов компании Shestakov Yacht Sales Inc. Официальный представитель Shestakov Yacht Sales Inc. для русскоговорящих клиентов в центральном офисе компании в Майами/Форт Лодердейл/Флорида/США.

Контактная информация

Email: andrey@shestakovyachtsales.com

Web: shestakovyachtsales.com

Телефоны

Краснодарский край: **+7(918)465-66-44**

США, Майами, Флорида: **+1(954)274-4435**

Время работы

Понедельник – Суббота: **9:00 - 21:00**
EDT

Воскресенье: **Закрито**

Адрес



Harbour Towne Marina, 850 NE 3rd St,
STE 213, Dania, FL 33004