

# MEANDER — GLADDING HEARN SHIPBUILDING



**Builder:**

GLADDING HEARN SHIPBUILDING

**Year Built:** 1960

**Model:** Trawler Yacht

**Price:** PRICE ON APPLICATION

**Location:** United States

**LOA:** 50' 0" (15.24m)

**Beam:** 14' 0" (4.27m)

**Min Draft:** 5' 0" (1.52m)

**Cruise Speed:** 6 Kts. (7 MPH)

**Max Speed:** 9 Kts. (10 MPH)

Our experienced yacht broker, Andrey Shestakov, will help you choose and buy a yacht that best suits your needs **Meander — GLADDING HEARN SHIPBUILDING** from our catalogue. Presently, at **Shestakov Yacht Sales Inc.**, we have a wide variety of yachts available on our sale's list. We also work in close contact with all the big yacht manufacturers from all over the world.

If you would like to buy a yacht **Meander — GLADDING HEARN SHIPBUILDING** or would like help answering any questions concerning purchasing, selling or chartering a yacht, please call **+1(954)274-4435**

# TABLE OF CONTENTS

---

TABLE OF CONTENTS	2
SPECIFICATIONS	4
Overview	4
Basic Information	4
Dimensions	4
Speed, Capacities and Weight	4
Accommodations	4
Hull and Deck Information	4
Engine Information	5
DETAILED INFORMATION	6
Specifications	6
Exclusions	7
Disclaimer	7
PHOTOS	8
115894661_10163837568545297_1826933668618505249_n	8
109808067_10163838094005297_8453889700650469845_n	8
115710050_10163837568605297_6767776727892774724_n	8
109395022_10163838094240297_2173744654522965162_n	8
115667377_10163838094015297_973867862660772564_n	8
115805303_10163838094060297_3454154209737143075_n	8
115908422_10163838094175297_6678273377864467274_n	9
115912247_10163838094075297_8718116755730061539_n	9
115933079_10163838094220297_3786130290024400055_n	9
116116753_10163838094190297_5385324955299187712_n	9
CONTACTS	10
Contact details	10
Telephones	10
Office hours	10

---

Address

10

---

# SPECIFICATIONS

---

## Overview

---

Well cared for Pilothouse / Liveboard.

Classic down east pilot boat that has been converted into a live aboard.

JL audio stereo system with speakers.

Has full head, washer/drier, heating system, hot water heater. 12v/120v systems.

Powered by a Detroit 471 with 4600 hours.

Has an inline 3 cylinder westerbeke generator.

Single screw, no bow thruster.

In the past three years this boat has brought me to Portland, ME, Block Island, RI, and Nantucket, MA without issues.

## Basic Information

---

**Category:** Trawler Yacht

**Sub Category:** Raised Pilothouse

**Model Year:** 1960

**Year Built:** 1960

**Country:** United States

**Vessel Top:** Raised Pilothouse

## Dimensions

---

**LOA:** 50' 0" (15.24m)

**Beam:** 14' 0" (4.27m)

**Min Draft:** 5' 0" (1.52m)

**Clearance:** 15' 0" (4.57m)

## Speed, Capacities and Weight

---

**Cruise Speed:** 6 Kts. (7 MPH)

**Max Speed:** 9 Kts. (10 MPH)

**Water Capacity:** 150 Gallons

**Holding Tank:** 50 Gallons

**Fuel Capacity:** 700 Gallons

## Accommodations

---

**Total Cabins:** 1

## Hull and Deck Information

---

**Hull Material:** Steel

---

## Engine Information

---

**Engines:** 1

**Manufacturer:** Detroit Diesel

**Model:** 471

**Engine Type:** Inboard

**Fuel Type:** Diesel

---

## DETAILED INFORMATION

---

### Specifications

---

#### ACCOMMODATIONS:

- One V-Berth

#### GALLEY EQUIPMENT:

- Propane stove
- 12v fridge

#### ELECTRONICS & NAVIGATION:

All furuno electronics

- GPS
- radar, and sonar.

#### DECK & HULL EQUIPMENT:

- one durabrite mini spotlight
- back deck lighting
- anchor windlass
- bow pulpit with anchor
- spare anchor
- Hawspipe anchor available.

#### ELECTRONICS:

- Depth sounder
- VHF
- Cockpit Speakers
- Compass
- Radar
- Radio

#### RIGGING:

- Steering Wheel
- Electric Winch

#### ADDITIONAL INTERIOR EQUIPMENT:

- Washing Machine
- Oven
- Compass
- Marine Head
- Refrigerator
- Battery Charger

- Electric Bilge Pump
- Heating
- Hot Water

**ELECTRICAL:**

- Shore Power Inlet
- Inverter
- Generator

**EXTERIOR EQUIPMENT:**

- Solar Panel
- Cockpit Cushions
- Swimming Ladder
- Davit(s)

The Company offers the details of this vessel in good faith but cannot guarantee or warrant the accuracy of this information nor warrant the condition of the vessel. A buyer should instruct his agents, or his surveyors, to investigate such details as the buyer desires validated. This vessel is offered subject to prior sale, price change, or withdrawal without notice.

## Exclusions

---

Owner's personal belongings.

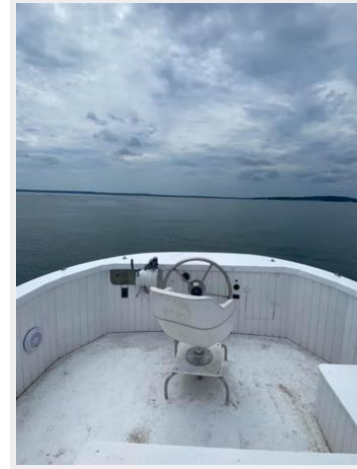
## Disclaimer

---

The Company offers the details of this vessel or yacht in good faith but cannot guarantee or warrant the accuracy of this information nor warrant the condition of the vessel. A buyer should instruct his representatives, agents, or his surveyors, to investigate such details as the buyer desires validated. This vessel or yacht is offered subject to prior sale, price change, or withdrawal without notice.

# PHOTOS

115894661\_10163837568545297\_1826933668618505249\_n 109808067\_10163838094005297\_8453889700650469845\_n



115710050\_10163837568605297\_6767776727892774724\_n 109395022\_10163838094240297\_2173744654522965162\_n



115667377\_10163838094015297\_973867862660772564\_n 115805303\_10163838094060297\_3454154209737143075\_n

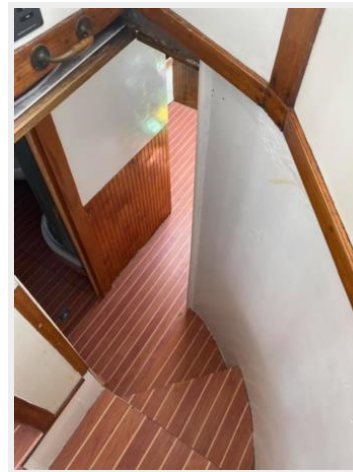




115908422\_10163838094175297\_6678273377864467274\_n 115912247\_10163838094075297\_8718116755730061539\_n



115933079\_10163838094220297\_3786130290024400055\_n 116116753\_10163838094190297\_5385324955299187712\_n



## CONTACTS

---

Andrey Shestakov, leading yacht broker of the sales department of Shestakov Yacht Sales Inc. Shestakov Yacht Sales Inc., the official representative of the Miami/Fort Lauderdale FL headquarters.

### Contact details

---

Email:  
[andrey@shestakovyachtsales.com](mailto:andrey@shestakovyachtsales.com)

Web: [shestakovyachtsales.com/en/](http://shestakovyachtsales.com/en/)

### Telephones

---

USA: +1(954)274-4435

### Office hours

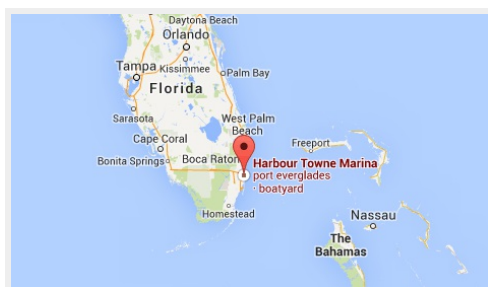
---

Monday – Saturday: **9:00 - 21:00** EDT

Sunday: **closed**

### Address

---



Harbour Towne Marina, 850 NE 3rd St,  
STE 213, Dania, FL 33004