

## CLICQUOT — PEARSON



**Судостроитель:** PEARSON

**Год постройки:** 1991

**Модель:** Sloop

**Цена:** **ЦЕНА ЯХТЫ ПО ЗАПРОСУ**

**Местонахождение:** United States

**Длина общая:** 38' 0" (11.58m)

**Ширина:** 12' 4" (3.76m)

**Макс. осадка:** 4' 11" (1.50m)

Купить **Clicquot — PEARSON** а также выбрать подходящую вам яхту из нашего каталога яхт вам поможет опытный яхтенный брокер Андрей Шестаков. На сегодняшний день компания **Shestakov Yacht Sales Inc.** имеет большое количество яхт в собственном списке продаж, а также тесно сотрудничает со всеми крупными яхтенными производителями по всему миру.

Для того чтобы купить яхту **Clicquot — PEARSON** а также проконсультироваться по любому вопросу связанному с покупкой, продажей, чартером яхт позвоните по телефону **+7(918)465-66-44**.

# ОГЛАВЛЕНИЕ

ОГЛАВЛЕНИЕ	2
ХАРАКТЕРИСТИКИ	6
Обзор	6
Основная информация	6
Размеры	6
Скорость, вместимость и масса	6
Размещение	6
Корпус и палуба	7
Информация о двигателе	7
ПОДРОБНОЕ ОПИСАНИЕ	8
MAIN DESCRIPTION	8
WALKTHROUGH	8
Electronics	8
Sails and Rigging	8
DECK	9
Mechanical	10
ELECTRICAL	10
Galley / Salon / Stateroom Items	10
Plumbing	11
INTERIOR	11
DISCLAIMER	12
Исключения	13
Отказ от ответственности	13
ФОТОГРАФИИ	14
1	14
2	14
1 Clicquot 38' Pearson 1991	14
Pic 0006	14

---

Pic 007	14
Pic 008	14
Pic 009	15
Pic 010	15
Pic 011	15
Pic 012	15
Pic 013	15
Pic 014	15
Pic 016	16
Pic 017	16
Pic 018	16
Pic 019	16
Pic 020.1	16
Pic 020.2	16
Pic 020.3	17
Pic 020	17
Pic 022	17
Pic 021	17
Pic 023	18
Pic 024	18
Pic 026	18
Pic 027	18
Pic 028	18
Pic 029	18
Pic 101	19
Pic 102	19
Pic 103	19
Pic 105	19
Pic 106	19

---

---

Pic 107	19
Pic 108	20
Pic 109	20
Pic 110	20
Pic 111	20
Pic 113	20
Pic 201	20
Pic 202	21
Pic 203	21
Pic 204.1	21
Pic 204.2	21
Pic 204	21
Pic 205	21
Pic 206	22
Pic 207	22
Pic 209	22
Pic 211	22
Pic 220	23
Pic 221	23
Pic 223	23
Pic 222	23
Pic 224	24
Pic 301	24
Pic 302	24
Pic 303	24
Pic 305	25
Pic 304	25
Pic 306	25
Pic 307	25

---

---

Pic 308	26
Pic 401	26
Pic 402	26
Pic 403	26
Pic 404	27
Pic 501	27
Pic 504	27
Pic 502	27
Pic 505	28
Pic 601	28
Pic 602	28
Pic 603	28
Pic 604	29
Pic 605	29
Pic 801	29
<b>КОНТАКТЫ</b>	<b>30</b>
Контактная информация	30
Телефоны	30
Время работы	30
Адрес	30

# ХАРАКТЕРИСТИКИ

## Обзор

**\*\*\* Very Clean Vessel \*\*\*Low Engine HoursNew Bottom Paint - July 2020**The Pearson 38 is a performance cruiser, combining sailing performance that comfortably accommodates two couples in their own private staterooms. The Pearson 38 has ample beam, a long waterline, generous freeboard. By using the a wing keel, draft is only 4 ft. 11 in. (As measured in the boat yard) The double spreader rig and recessed inboard genoa tracks permit closer sheeting angles resulting in better windward performance. All sail control lines are led aft to the cockpit for safety, convenience and easy single handling.

## Основная информация

Тип судна: Sloop

Модельный год: 1991

Год постройки: 1991

Страна: United States

## Размеры

Длина общая: 38' 0" (11.58m)

Длина по ватерлинии: 29' 7" (9.02m)

Ширина: 12' 4" (3.76m)

Макс. осадка: 4' 11" (1.50m)

Трапы: 52' 0" (15.85m)

## Скорость, вместимость и масса

Водоизмещение: 15175 Pounds

Вместимость воды: 100 Gallons

Вместимость сточного бака: 25 Gallons

Объем топливного бака: 22 Gallons

## Размещение

Всего кают: 1

## Корпус и палуба

---

**Материал корпуса:** Fiberglass

## Информация о двигателе

---

**Двигатели:** 1

**Производитель:** Yanmar

**Модель:** 3NM35F

**Тип двигателя:** Inboard

**Тип топлива:** Diesel

---

# ПОДРОБНОЕ ОПИСАНИЕ

---

## MAIN DESCRIPTION

---

**\*\*\* Very Clean Vessel \*\*\*Low Engine HoursNew Bottom Paint - July 2020**The Pearson 38 is a performance cruiser, combining sailing performance that comfortably accommodates two couples in their own private staterooms. The Pearson 38 has ample beam, a long waterline, generous freeboard. By using the a wing keel, draft is only 4 ft. 11 in. (As measured in the boat yard) The double spreader rig and recessed inboard genoa tracks permit closer sheeting angles resulting in better windward performance. All sail control lines are led aft to the cockpit for safety, convenience and easy single handling.

## WALKTHROUGH

---

Below deck, instead of conventional V berths forward there's a double bed. Large generous sized drawers are under the bed. Hanging locker and drawers.In the main salon there's a centerline table and folds down to create extra space when not in use. The dinette area can be quickly converted to a double berth. To port, the settee berth doubles as a seat for the aft facing chart table. Aft of the chart table is an extra large locker and a bank of drawers.The galley is to starboard - convenient to the companionway but out of the traffic pattern. It includes double sinks, a huge refrigerated ice box, propane stove with oven and plenty of stowage. The engine is under the sinks and is easily accessed from three sides.The owner's stateroom is aft of the galley and its large king size double berth extends under the cockpit. An overhead hatch and two opening ports into the cockpit assure plenty of light and ventilation. A large hanging locker with built-in shelves provides plenty of space for personal gear.Opposite the aft stateroom is the roomy head compartment with vanity, mirrors and enclosed hamper. The shower curtain keeps the vanity area from getting wet.

## Electronics

---

- Raymarine Autopilot
- Raymarine instruments (2008) Dept, wind speed, direction
- Garmin Chart Plotter 540
- EPIRB
- VHF

## Sails and Rigging

---

- Standing rigging replaced in 2008
- Split back stay - with isolators for SSB
- Main replaced in 2010 and Tidewater



- Strong track in mast for low sail slug friction
- Mac Pack (2010)
- 150 Genoa (2009)
- Roller furling
- Double spreader masthead rig
- Aluminum spar stepped on the keel (not tapered)
- Fixed gooseneck

## DECK

---

- 2x Lewmar two speed 52 wrenches
- Cabin top Lewmar two speed
- Mast mounted single speed Lewmar for genoa
- stemhead with anchor roller
- 35 lb CQR anchor
- 35 lb Bruce anchor
- 35 lb Delta anchor
- 50 feet chain / 100 feet line
- Molded non-skid
- Cockpit sail locker
- Winch island alcoves
- Teak toe rail w/ midship chocks
- Vinyl rub rail
- T-shaped cockpit with helmsman seat
- Teak handrails
- Cockpit ice box
- Aluminum propane tank
- Edson pedestal steering with engine shift
- Cockpit cushions (2015)
- Back cushions (2015)
- Canvas replaced in 2009
- Wind scoop
- Sunshades for cockpit
- Magma grill
- 40 inch stainless steel destroyer wheel
- 5 inch compass
- 2 speed Lewmar 52 self tailing wrenches
- Double bow rail
- Split double stern rail 2/ swim ladder
- Double lifelines
- Boarding gate - both sides
- Dual stern cleats and chocks
- Cabin top mainsheet traveler

- 8 side opening ports
- 2 large fixed ports
- 2 large and 2 small aluminum cabin top hatches
- Dorade Vent
- Recessed inboard genoa track
- 4 aluminum framed hatches
- Dinghy engine lift
- multitude of lines and fenders
- Bosun's chair

---

## Mechanical

---

- Yanmar 35 HP - 3HM35F - 854 hours since major overhaul
- Feathering PYI prop
- 2 8,000 BTU A/C units
- Maintenance log
- 2 Yanmar services books
- Spare Alternator
- Spare parts

---

## ELECTRICAL

---

- 85 amp alternator
- 1x 105 AH engine cranking battery
- 3x 105 AH house batteries (2017)
- Pro-Nautic 12-50P power manager and trickle charger
- ProSafe FS30 galvanic isolator
- Shore power cord and adapter
- Shore power system with circuit breakers, cord and 5 outlets
- 12-volt electrical system
- DC electrical panel with circuit breakers
- Navigation lights
- 2 LED spreader mounted deck light
- Interior lights
- Master battery switch
- electrical bilge pump

---

## Galley / Salon / Stateroom Items

---

- 2 mattress pads
- Duvet cover

- 2 sets of sheets
- Blanket
- Pillows
- Bath towels, hand towels and wash cloth
- Pots and Pans
- Misc. kitchen utensils
- Plastic glasses
- Mugs, bowls, plate
- Electric fans

## Plumbing

---

- 100 gallon fresh water capacity
- Hot/cold pressure water system
- Shower with submersible sump pump
- 25 gallon holding tank with off-shore discharge valve
- Manual bilge pump mounted in cockpit
- Hot/cold cockpit shower

## INTERIOR

---

### General

- Teak bulkheads w/ rubbed oil finish
- Varnished teak & holly sole
- 4 inch foam mattress

### Main Cabin

- L-shaped dinette to starboard with storage locker
- Settee to port with storage under
- Liquor locker
- Shelf storage
- Overhead locker storage with sliding doors

### Galley

- 2 burner gimballed propane stove
- Trash bin
- Locker storage outboard
- 8 cu. ft. refrigerator with integral ice box
- Double stainless steel sink
- Drawer, locker and trap storage

## Forward Cabin

- Forepeak locker
- Island berth w/ drawer stowage under
- Bureau
- Hanging lock
- Mirror
- Hatch overhead

## Navigation Center

- Aft facing chart table w/ hinged top and drawers under
- Wet locker
- Hinged electrical panel / electronics locker
- Garmin chart plotter
- Engine hour meter
- Battery condition monitor

## Aft Stateroom

- King-size quarterberth with drawers under
- Hanging locker
- Shelf outboard
- Mirror
- Opening ports
- Hatch overhead

## Head

- Shower pan with teak grate
- Vanity
- Lockers outboard with mirrored doors
- Vanity sink
- Mirror
- Hatch overhead
- Vanity enclosure for shower

## DISCLAIMER

---

The Company offers the details of this vessel in good faith but cannot guarantee or warrant the accuracy of this information nor warrant the condition of the vessel. A buyer should instruct his agents, or his surveyors, to investigate such details as the buyer desires validated. This vessel is offered subject to prior sale, price change, or withdrawal without notice.

---

## Исключения

---

При продаже яхты исключаются личные вещи владельца.

---

## Отказ от ответственности

---

Компания предоставляет описание судна или яхты добросовестно, но не может гарантировать точность этой информации, а также не ручается за техническое состояние. Покупатель должен проинструктировать своих агентов или оценщиков исследовать представленную информацию более подробно, по собственному желанию. Продажа судна или яхты, изменение цены или снятие с продажи будет происходить без предварительного уведомления.

# ФОТОГРАФИИ

1



1 Clicquot 38' Pearson 1991

2



Pic 0006



Pic 007



Pic 008



**Pic 009**



**Pic 010**



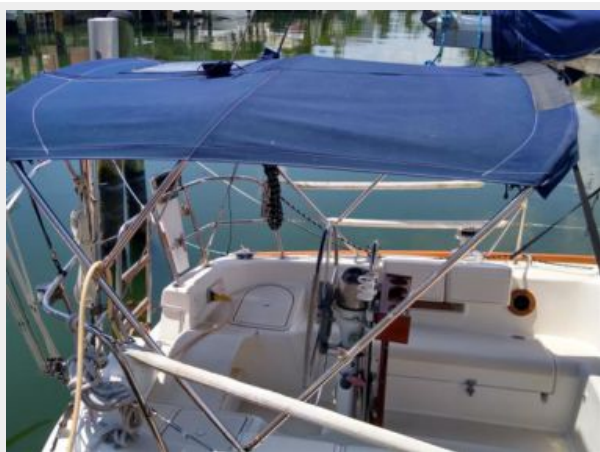
**Pic 011**



**Pic 012**



**Pic 013**



**Pic 014**



**Pic 016**



**Pic 017**



**Pic 018**



**Pic 019**



**Pic 020.1**



**Pic 020.2**





Pic 020.3



Pic 020



Pic 022



Pic 021



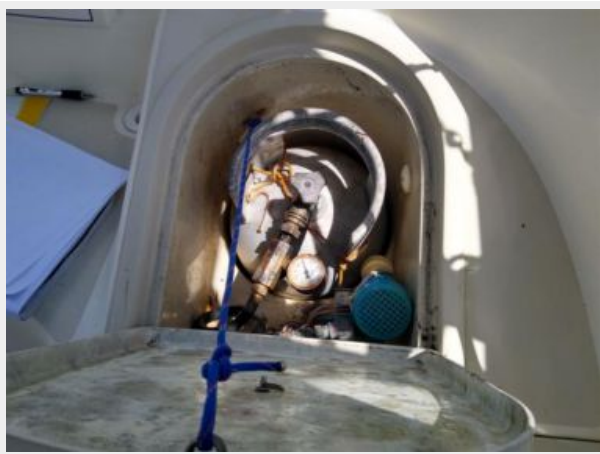
**Pic 023**



**Pic 024**



**Pic 026**



**Pic 027**



**Pic 028**



**Pic 029**



**Pic 101**



**Pic 102**



**Pic 103**



**Pic 105**



**Pic 106**



**Pic 107**



**Pic 108**



**Pic 109**



**Pic 110**



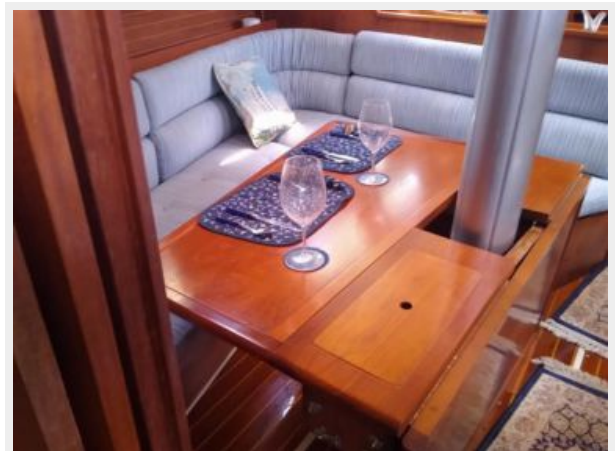
**Pic 111**



**Pic 113**



**Pic 201**



**Pic 202**



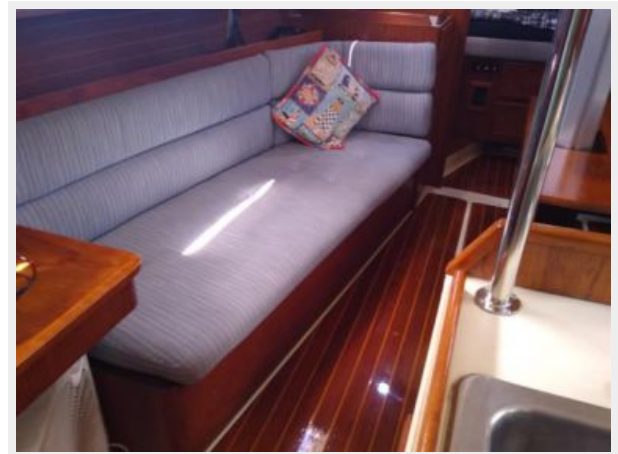
**Pic 203**



**Pic 204.1**



**Pic 204.2**



**Pic 204**



**Pic 205**



**Pic 206**



**Pic 207**



**Pic 209**



**Pic 211**



**Pic 220**



**Pic 221**

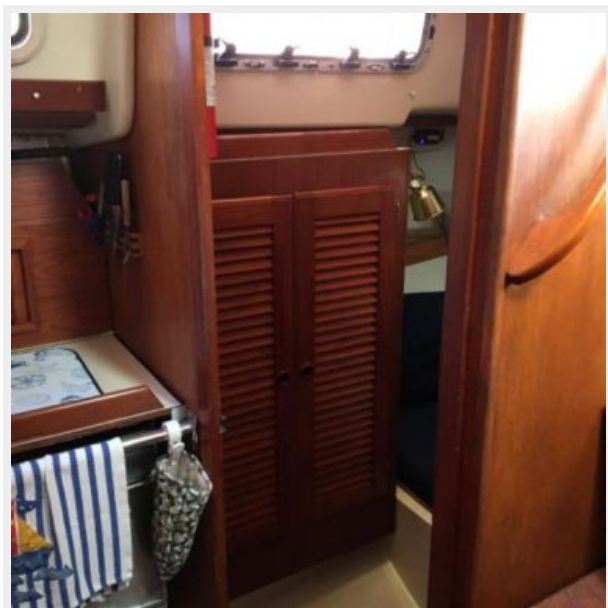


**Pic 223**

**Pic 222**



**Pic 224**



**Pic 301**



**Pic 302**



**Pic 303**





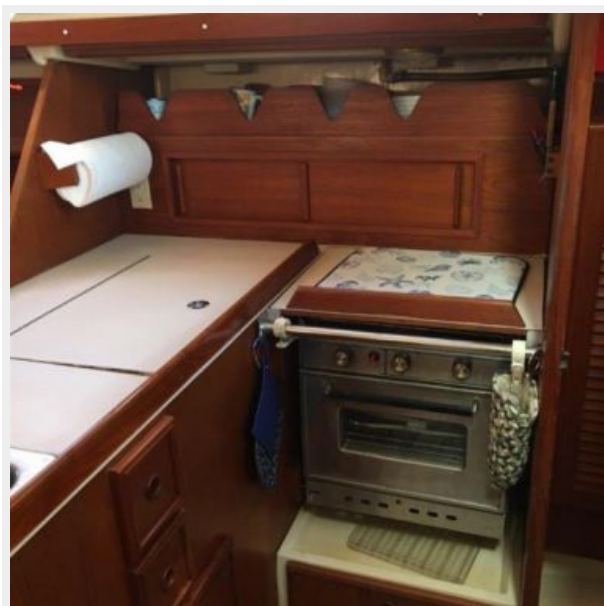
Pic 304



Pic 305



Pic 306



Pic 307



**Pic 308**



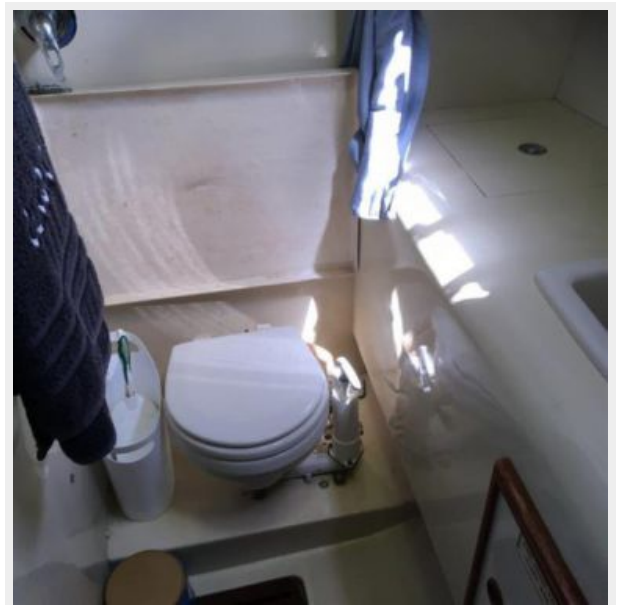
**Pic 401**



**Pic 402**



**Pic 403**



**Pic 404**



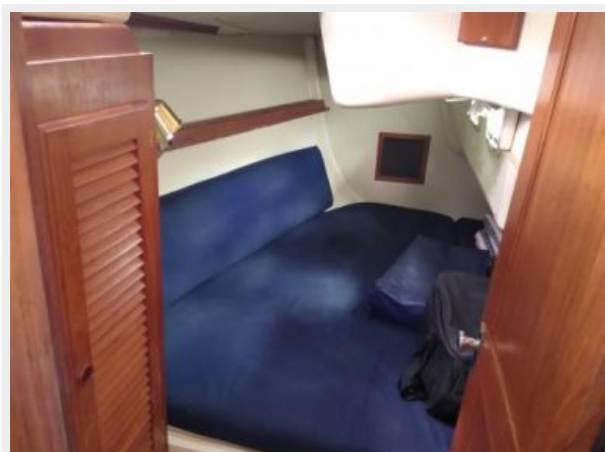
**Pic 501**



**Pic 504**



**Pic 502**



**Pic 505**



**Pic 601**



**Pic 602**



**Pic 603**



**Pic 604**



**Pic 605**



**Pic 801**



# КОНТАКТЫ

---

Андрей Шестаков (Andrey Shestakov) – ведущий яхтенный брокер отдела продаж яхт и судов компании Shestakov Yacht Sales Inc. Официальный представитель Shestakov Yacht Sales Inc. для русскоговорящих клиентов в центральном офисе компании в Майами/Форт Лодердейл/Флорида/США.

## Контактная информация

---

Email: [andrey@shestakovyachtsales.com](mailto:andrey@shestakovyachtsales.com)

Web: [shestakovyachtsales.com](http://shestakovyachtsales.com)

## Телефоны

---

Краснодарский край: **+7(918)465-66-44**

США, Майами, Флорида: **+1(954)274-4435**

## Время работы

---

Понедельник – Суббота: **9:00 - 21:00**  
EDT

Воскресенье: **Закрето**

## Адрес

---



Harbour Towne Marina, 850 NE 3rd St,  
STE 213, Dania, FL 33004