

RAVEN — NORTHERN MARINE



Builder: NORTHERN MARINE

Year Built: 2004

Model: Expedition Yacht

Price: PRICE ON APPLICATION

Location: United States

LOA: 57' 0" (17.37m)

Beam: 17' 6" (5.33m)

Max Draft: 5' 10" (1.78m)

Cruise Speed: 9 Kts. (10 MPH)

Max Speed: 11 Kts. (13 MPH)

Our experienced yacht broker, Andrey Shestakov, will help you choose and buy a yacht that best suits your needs **RAVEN — NORTHERN MARINE** from our catalogue. Presently, at Shestakov Yacht Sales Inc., we have a wide variety of yachts available on our sale's list. We also work in close contact with all the big yacht manufacturers from all over the world.

If you would like to buy a yacht **RAVEN — NORTHERN MARINE** or would like help answering any questions concerning purchasing, selling or chartering a yacht, please call **+1(954)274-4435**

TABLE OF CONTENTS

TABLE OF CONTENTS	2
SPECIFICATIONS	5
Basic Information	5
Dimensions	5
Speed, Capacities and Weight	5
Accommodations	5
Hull and Deck Information	5
Engine Information	6
DETAILED INFORMATION	7
Construction	7
Deck and Hull	7
Flybridge	8
Pilothouse	8
Salon	9
Galley	9
Owner's Cabin	10
Guest Stateroom	10
Electronics	10
Electrical	12
Safety	12
Mooring	12
Engine Room and Mechanical	12
Exclusions	13
Disclaimer	14
PHOTOS	15
Photo Aug 02, 7 30 19 PM	15
Photo Aug 02, 7 39 36 PM	15
Photo Aug 02, 7 45 10 PM	15

Photo Aug 02, 7 45 56 PM	15
Photo Aug 02, 7 48 08 PM	16
Photo Aug 02, 7 48 45 PM	16
Photo Aug 02, 7 49 42 PM	16
Photo Aug 02, 7 53 53 PM	16
Photo Aug 02, 7 55 54 PM	17
Photo Aug 02, 7 57 23 PM	17
Photo Aug 02, 7 58 06 PM	17
Photo Aug 02, 7 58 14 PM	17
Photo Aug 02, 7 58 54 PM	17
Photo Aug 02, 7 58 56 PM (1)	17
Photo Aug 02, 8 00 34 PM	18
Photo Aug 02, 8 00 43 PM	18
Photo Aug 02, 8 01 10 PM	18
Photo Aug 02, 8 04 03 PM	18
Photo Aug 02, 8 04 20 PM	19
Photo Aug 02, 8 04 50 PM	19
Photo Aug 02, 8 06 59 PM	19
Photo Aug 02, 8 05 55 PM	19
Photo Aug 02, 8 08 05 PM	20
Photo Aug 02, 8 08 19 PM	20
Photo Aug 02, 8 08 40 PM	20
Photo Aug 02, 8 09 21 PM	20
Photo Aug 02, 8 09 47 PM	21
Photo Aug 02, 8 10 07 PM	21
Photo Aug 02, 8 12 06 PM	21
Photo Aug 02, 8 10 51 PM	21
Photo Aug 02, 8 13 45 PM	22
Photo Aug 02, 8 15 02 PM (2)	22

Photo Aug 02, 8 18 30 PM	22
Photo Aug 02, 8 16 20 PM	22
Photo Aug 02, 8 19 45 PM	23
Photo Aug 02, 8 23 08 PM	23
Photo Aug 02, 8 23 19 PM	23
Photo Aug 02, 8 24 33 PM	23
Photo Aug 02, 8 26 51 PM	24
Photo Aug 02, 8 25 45 PM	24
Photo Aug 02, 8 27 07 PM	24
Photo Aug 02, 8 27 39 PM	24
Photo Aug 02, 8 28 30 PM	25
Photo Aug 02, 8 29 06 PM	25
Photo Aug 02, 8 30 53 PM	25
Photo Aug 02, 8 32 39 PM	25
Photo Aug 02, 8 39 42 PM	26
Photo Aug 02, 8 38 26 PM	26
Picture1	26
Picture2	26
Picture4	26
CONTACTS	27
Contact details	27
Telephones	27
Office hours	27
Address	27

SPECIFICATIONS

Basic Information

Category: Expedition Yacht	Model Year: 2004
Year Built: 2004	Country: United States

Dimensions

LOA: 57' 0" (17.37m)	Beam: 17' 6" (5.33m)
Max Draft: 5' 10" (1.78m)	

Speed, Capacities and Weight

Cruise Speed: 9 Kts. (10 MPH)	Max Speed: 11 Kts. (13 MPH)
Water Capacity: 440 Gallons	Holding Tank: 140 Gallons
Fuel Capacity: 2900 Gallons	

Accommodations

Total Cabins: 3

Hull and Deck Information

Hull Material: Fiberglass

Engine Information

Engines: 1

Manufacturer: John Deere

Model: 6081

Engine Type: Inboard

Fuel Type: Diesel

DETAILED INFORMATION

Construction

Northern Marine is a name that has become synonymous with yachts built to explore the world's most remote, challenging locations.

Raven's robust construction includes a 1 1/2" steel shoe running the entire length of her full keel, offering optimum grounding protection. A stainless steel stem band runs from her trademark breastplate down to her keel, further solidifying her reputation as an exploration yacht ready to take on the most demanding of destinations.

The Anacortes, Washington-based builder designed the 5700 Series Expedition Trawlers with semi-custom production in mind. This provided a more approachable opportunity to those looking for a serious expedition cruiser, while still offering a multitude of customization options.

With seaworthiness, safety, and efficiency at the forefront of her design, *Raven* is a beautiful yacht that is ready to take on the world with her new owners.

Deck and Hull

Aft Docking Controls

Bow Thruster

Stern Thruster

Stabilizers

Wide Walk-around Side Decks

Starboard Boarding Door

(2) Bow Storage Lockers

Dual Trumpet Horn

Anchor Washdown

21' Boat Deck

Dinghy Davits

Steelhead Marine ES1000 Tender Crane

Swim Platform

(2) Pop-up Cleats on Platform

Hot/Cold Swim Platform Shower

Transom Door

(5) Cruisair Conditioning Units

Maytag Neptune Stacked Washer & Dryer

Flybridge Cushions

Flybridge

Bimini

L-shaped Settee

Table

Gaggenau 2-Burner Electric Cooktop

Gaggenau Refrigerator/ Freezer

Teak Fold-down Seat

Stidd Helm Seat (2017)

Venturi Windscreen

Thruster Controls

Storage

Pilothouse

Raven's pilothouse is accessible via an interior walkway from her salon, a traditional starboard door to the side deck, and a protected landing inside of the side decks at the flybridge steps.

(3) Windshield Wipers with Freshwater Sprayer

Fuel Level Monitor

Cabinets

Dinette

Settee

Pilot Berth

Engine Gauges (Tachometer, Water Temperature, Oil Pressure)

Salon

Entering Raven's salon from the aft deck, a generous cedar-lined coat closet is conveniently located to port right as you step into the boat. A beautiful custom table (can be raised/lowered to dinner or coffee table height) flanks the port side with two accompanying chairs. A matching leather sofa, storage ottoman, and swiveling armchair are to starboard. The movable nature of the salon furniture allows her owners to change the layout and furniture as desired. Large windows surround the salon, providing a panoramic view of your destination. Forward of the Salon, the u-shaped galley's granite counter top provides a bar for simple dining or entertaining with two fixed barstools.

Cedar-lined Coat Closet

Custom Table with Arrigoni Burl Inlay

Bar with (2) Barstools

Sofa

Ottoman

Galley

Raven's U-shaped galley provides ample storage and prep space for proper meals and even entertaining, while the layout ensures that her cook is kept safe underway. Generous storage can be found underneath all countertops, as well as in drawers, easily-reached overhead cabinetry, and additional cupboards in the hallway leading forward to the pilothouse.

Beautiful Granite Countertops (2018)

Large Sink

GE Profile 4-Burner Electric Stovetop and Oven

GE Profile Microwave Oven

Knife Magnet for Safe Knife Stowage

Miele Incognito Dishwasher

Dedicated Wine/ Bottle Storage

Owner's Cabin

Carpeted spiral steps just forward of the salon and adjacent to the galley lead to a landing with access to the master stateroom, laundry, and engine room. *Raven's* owner's cabin is a true, private oasis. Beautiful cabinetry with abundant storage surrounds the king bed, which can be easily walked around on either side. A settee to the left of the bed provides a great spot for dressing or relaxing, with drawers above and below and a cedar-lined hanging locker beside. Each side of the bed features a nightstand with storage below. Four large drawers supply stowage beneath the bed. Additional cabinetry, additional shelving, and another cedar-lined hanging locker are to the right. A Samsung flatscreen television is mounted inconspicuously for cozy movie nights.

The private owner's head, accessible only via the master stateroom, features plentiful storage and a dedicated shower stall with an impact glass door.

Guest Stateroom

Accessed via carpeted spiral staircase from the pilothouse, the forward stateroom offers spacious privacy for guests or crew. A centerline queen bed offers storage drawers underneath, with additional stowage in a large walk-in closet with shelving.

The guest head doubles as a day head, as it is accessible via a door at the landing at the bottom of the staircase. This head features granite countertops, generous storage, and a dedicated shower stall with an impact glass door.

Electronics

Flybridge

12" Simrad NSS EVO Chartplotter (2016)

Simrad Depth Sounder

Furuno AIS (2015)

Furuno Radar

Icom VHF Radio

Pilothouse

Simrad AP20 Autopilot Control Unit

Simrad NSS EVO 16" Chartplotter

Simrad AIS

Simrad R135 Rudder Angle Indicator

Simrad 4G Radar Dome

Simrad Depth Sounder

Simrad IS15 Wind Instrument

Furuno GP32 WAAS/GPS Receiver and Marine Navigator

NEC MultiSync Display (Can display navigation, internet, etc.)

Kahlenburg M511-A Whistle Control

FloScan Fuel Flow Display

Ship Alarm Panel

TRAC Stabilizer Display

Iridium Satellite Wifi

Ubiquiti Networks Go Free Wifi Booster

Raynav Network Wi-Fi

Furuno NAVnet c-map NT 48-mile Open Array Radar/ Plotter

Icom IC-M602 Marine VHF

Blue Sea Systems Battery Voltage Display

Icom Ic-M700 SSB

Set of (2) Walkie Talkies

Salon

Flatscreen Smart Television (2019)

Soundbar (2019)

Bose Stereo System

Electrical

50-amp Shore Power Cable

17 kW Onan Generator with Power Take Off

5 kW Panda Back-up Generator

Trace Xantrex 4024 Inverter (2019)

Shore Power Transformer

Smart Charger

(2) SolarWorld Sunmodule Protect SW 270 Mono Solar Panels

MidNite Solar, Inc. Solar Panel Charge Controller

Safety

Life Raft (re-packed and inspected 2016)

Jim Buoy Life Ring

Epirb

Mooring

Electric Windlass

154-lb Rocna Anchor with Swivel, 500 Feet of Chain

Spare Danforth

Extra 300' Chain

(2) Novatec Mooring Hawsers

Engine Room and Mechanical

Raven's engine room offers fantastic headroom as well as ample space to access any part of her engine with ease. Entering the weathertight door, the engine is centered with plentiful room to

walk around either side. A countertop workspace is to the left, with a craftsman toolbox and storage underneath.

330 HP John Deere 6081 Diesel Engine

Onan Marine 17 kW Generator, 3100 Hours

Fischer Panda 5kW Back-up Generator

(2) Weather-tight Aluminum Engine Room Doors with Diamond Sea Glaze Viewing Ports

Hydraulic Get-Home System

Sound Insulation

Hart Systems, Inc. Tank Tender

ProMariner Corrosion Meter

Headhunter Tank Sentry Monitoring System

Craftsman Toolbox

Storage Throughout

DeWalt Emglo Compressor

Hydraulic Trac Stabilizers

Hydraulic Bow Thruster

Hydraulic Stern Thruster

Automatic Oil Change System for Engine & Generator

Racor Fuel Polishing System

Seachest

SK 23 GPH Watermaker

(5) Cruisair Air-Conditioning Units

Kabola Furnace

Exclusions

Owner's personal belongings.

Disclaimer

The Company offers the details of this vessel or yacht in good faith but cannot guarantee or warrant the accuracy of this information nor warrant the condition of the vessel. A buyer should instruct his representatives, agents, or his surveyors, to investigate such details as the buyer desires validated. This vessel or yacht is offered subject to prior sale, price change, or withdrawal without notice.

PHOTOS

Photo Aug 02, 7 30 19 PM



Photo Aug 02, 7 39 36 PM



Photo Aug 02, 7 45 10 PM



Photo Aug 02, 7 45 56 PM



Photo Aug 02, 7 48 08 PM



Photo Aug 02, 7 48 45 PM



Photo Aug 02, 7 49 42 PM



Photo Aug 02, 7 53 53 PM



Photo Aug 02, 7 55 54 PM



Photo Aug 02, 7 57 23 PM



Photo Aug 02, 7 58 06 PM



Photo Aug 02, 7 58 14 PM



Photo Aug 02, 7 58 54 PM

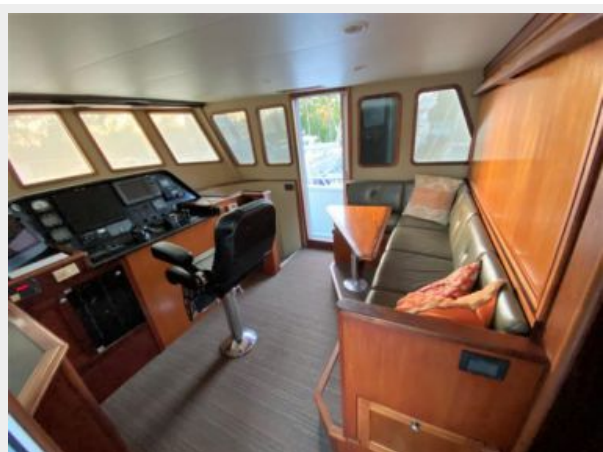


Photo Aug 02, 7 58 56 PM (1)



Photo Aug 02, 8 00 34 PM



Photo Aug 02, 8 00 43 PM



Photo Aug 02, 8 01 10 PM



Photo Aug 02, 8 04 03 PM



Photo Aug 02, 8 04 20 PM



Photo Aug 02, 8 04 50 PM



Photo Aug 02, 8 06 59 PM

Photo Aug 02, 8 05 55 PM



Photo Aug 02, 8 08 05 PM



Photo Aug 02, 8 08 19 PM



Photo Aug 02, 8 08 40 PM



Photo Aug 02, 8 09 21 PM



Photo Aug 02, 8 09 47 PM



Photo Aug 02, 8 10 07 PM

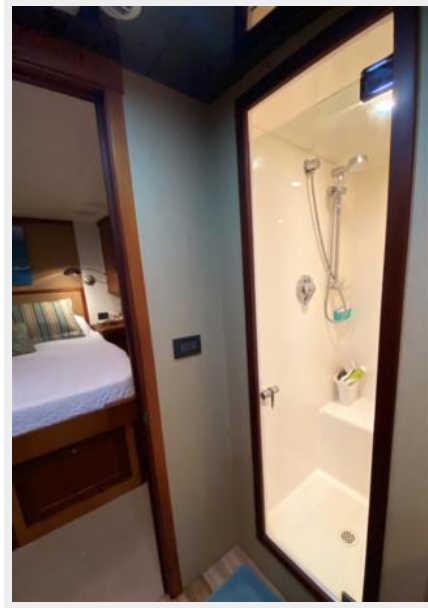


Photo Aug 02, 8 10 51 PM



Photo Aug 02, 8 12 06 PM



Photo Aug 02, 8 13 45 PM

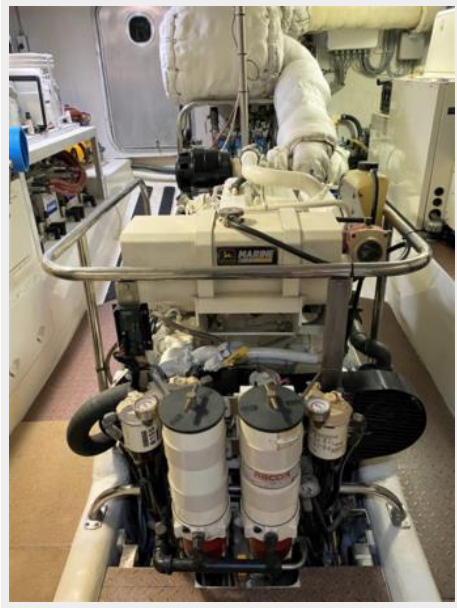


Photo Aug 02, 8 15 02 PM (2)



Photo Aug 02, 8 18 30 PM

Photo Aug 02, 8 16 20 PM



Photo Aug 02, 8 19 45 PM



Photo Aug 02, 8 23 08 PM



Photo Aug 02, 8 23 19 PM



Photo Aug 02, 8 24 33 PM



Photo Aug 02, 8 25 45 PM



Photo Aug 02, 8 26 51 PM



Photo Aug 02, 8 27 07 PM



Photo Aug 02, 8 27 39 PM



Photo Aug 02, 8 28 30 PM



Photo Aug 02, 8 29 06 PM



Photo Aug 02, 8 30 53 PM



Photo Aug 02, 8 32 39 PM



Photo Aug 02, 8 39 42 PM



Photo Aug 02, 8 38 26 PM



Picture1



Picture2



Picture4



CONTACTS

Andrey Shestakov, leading yacht broker of the sales department of Shestakov Yacht Sales Inc. Shestakov Yacht Sales Inc., the official representative of the Miami/Fort Lauderdale FL headquarters.

Contact details

Email: **andrey@shestakovyachtsales.com**

Web: shestakovyachtsales.com/en/

Telephones

USA: **+1(954)274-4435**

Office hours

Monday – Saturday: **9:00 - 21:00 EDT**

Sunday: **closed**

Address



Harbour Towne Marina, 850 NE 3rd St,
STE 213, Dania, FL 33004