

ARIADNE — SWEDEN YACHTS



Builder: SWEDEN YACHTS

Year Built: 1986

Model: Center Cockpit

Price: PRICE ON APPLICATION

Location: United States

LOA: 36' 0" (10.97m)

Beam: 12' 0" (3.66m)

Max Draft: 6' 5" (1.96m)

Our experienced yacht broker, Andrey Shestakov, will help you choose and buy a yacht that best suits your needs **Ariadne — SWEDEN YACHTS** from our catalogue. Presently, at Shestakov Yacht Sales Inc., we have a wide variety of yachts available on our sale's list. We also work in close contact with all the big yacht manufacturers from all over the world.

If you would like to buy a yacht **Ariadne — SWEDEN YACHTS** or would like help answering any questions concerning purchasing, selling or chartering a yacht, please call **+1(954)274-4435**

TABLE OF CONTENTS

| | |
|------------------------------|----|
| TABLE OF CONTENTS | 2 |
| SPECIFICATIONS | 5 |
| Overview | 5 |
| Basic Information | 5 |
| Dimensions | 5 |
| Speed, Capacities and Weight | 5 |
| Accommodations | 6 |
| Hull and Deck Information | 6 |
| Engine Information | 6 |
| DETAILED INFORMATION | 7 |
| Overview | 7 |
| Exclusions | 11 |
| Disclaimer | 11 |
| PHOTOS | 12 |
| 2 | 12 |
| 3 | 12 |
| 5 | 12 |
| 4 | 12 |
| 7 | 13 |
| 6 | 13 |
| 8 | 13 |
| 9 | 13 |
| 11 | 14 |
| 10 | 14 |
| 12 | 14 |
| 13 | 14 |
| 14 | 14 |
| 15 | 14 |

| | |
|----|----|
| 16 | 15 |
| 17 | 15 |
| 18 | 15 |
| 19 | 15 |
| 20 | 15 |
| 21 | 15 |
| 22 | 16 |
| 23 | 16 |
| 24 | 16 |
| 25 | 16 |
| 26 | 16 |
| 27 | 16 |
| 28 | 17 |
| 29 | 17 |
| 30 | 17 |
| 31 | 17 |
| 33 | 17 |
| 32 | 17 |
| 34 | 18 |
| 35 | 18 |
| 36 | 18 |
| 37 | 18 |
| 38 | 18 |
| 39 | 18 |
| 40 | 19 |
| 41 | 19 |
| 42 | 19 |
| 43 | 19 |
| 44 | 19 |

| | |
|-----------------|-------|
| CONTACTS | 20 |
| ----- | ----- |
| Contact details | 20 |
| ----- | ----- |
| Telephones | 20 |
| ----- | ----- |
| Office hours | 20 |
| ----- | ----- |
| Address | 20 |
| ----- | ----- |

SPECIFICATIONS

Overview

The Swedish built Sweden 36 is a sloop rigged center cockpit with the fin keel and a keel stepped mast. She has lots of room for a 36-footer including owner's aft cabin with a double and single, port and starboard L-shaped settees, centerline drop leaf table, galley aft to starboard and a nav station opposite the galley. Forward is a double berth with hanging locker and head. She has a nice sail inventory and her auxiliary power is a 28-HP Volvo diesel. Check out the Full Specs and call for an appointment to see her.

Basic Information

Category: Center Cockpit

Sub Category: Sloop

Model Year: 1986

Year Built: 1986

Country: United States

Dimensions

LOA: 36' 0" (10.97m)

LWL: 29' 5" (8.97m)

Beam: 12' 0" (3.66m)

Max Draft: 6' 5" (1.96m)

MFG Length: 36' 0" (10.97m)

Speed, Capacities and Weight

Displacement: 14420 Pounds

Water Capacity: 85 Gallons

Fuel Capacity: 21 Gallons

Accommodations

Total Cabins: 2

Total Berths: 7

Total Heads: 1

Hull and Deck Information

Hull Material: Fiberglass

Exterior Designer: Norlin/Ostermann

Engine Information

Engines: 1

Manufacturer: Volvo Penta

Model: 2003

Engine Type: Sail Drive

Fuel Type: Diesel

DETAILED INFORMATION

Overview

Overview

Sweden Yachts built this little cruiser to Lloyd's Registry & has Certificate for the build. Rare model with shoal draft. Incredibly roomy interior of mahogany with 2 staterooms. Handsome, fast and solidly built. Very comfortable cockpit area which is well protected by the dodger. Interior has a full galley, large attractive salon, decent sized head and two large staterooms. Ideal cruising boat that is safe, comfortable and easy to manage.

Accommodations

The Sweden Yachts 36 is a high-performance cruising sloop or racer/cruiser, depending upon your definition. The layout features forward, galley, main salon and nav station, and a surprisingly large full-width aft cabin. The interiors of Sweden Yachts are beautiful, completely done in rich mahogany with a satin varnish finish. All cabin soles are teak and holly; cushions in the main cabin are a smart yellow ultrasuede; in the fore and aft cabins a beige Sunbrella pattern. The overhead is white vinyl with teak strips.

The forward cabin features a double V-berth with small changing seat and filler piece, large sail storage locker under the berth, dresser drawers and a very nice hanging locker, opening hatch overhead.

The head is next aft to starboard and features a marine toilet (with holding tank, new tank level 2010 - and Y-valve), mirrors and lockers, hand-held shower with fold-down seat for showering and a teak floor grate. The entire lower half of the head compartment is a molded fiberglass pan for ease of cleaning.

The main salon is a delightful cabin with contoured settees port and starboard, cabinetry and

shelves above and outboard. The centerline dining table, with bottle storage within, has two fold-up leaves and seats a good crowd on both settees.

Aft to port is the sit-down, outboard-facing nav station, which features a hinged, fold-down panel for easy access to the back of the instrument panel. Opposite to starboard is the L-shaped galley with double stainless steel sinks, hot and cold pressure water with foot pumps for salt water and pressure fresh water, 6 gallon stainless steel water heater, two-burner propane stove with oven, Sea Frost engine-driven refrigeration (new in 2010) in a stainless steel ice box, built-in trash bin, pull-out cutting board, drawers and storage lockers.

The engine is easily accessed and sits in a box forming the base of the companionway.

Aft to starboard is the entrance to the very surprising full-across aft-cabin with a single berth to port and large double berth to starboard; shelves above and outboard. There is cavernous storage under the single berth and storage under the double berth, with an additional open storage area between the two berths. There is seat with storage under and a hanging locker. The cabin has four (4) opening ports. There is a custom pass-through opening to the galley with removable cover.

Ventilation is provided by a large opening hatch in the forward cabin (re-lensed in 2009), small opening hatch in the head, medium opening hatch and companionway in the main salon, four opening ports in the aft cabin. At least two electric fans in each cabin.

Electronics and Navigation

- ICOM VHF
- Uniden VHF w/ DSC with 2 WHAM units and charger, 2009
- B & G Hornet 4 System includes: log, wind speed & direction, new brainbox, 2008
- B & G Hecta depth finder
- Raymarine B&W chartplotter GPS
- Sony stereo w/4 speakers and iPod interface, new radio 2008
- '91 Furuno 1720 radar
- '99 Autohelm auto pilot w/ wired remote
- KVH digital compass
- Suunto binnacle compass

Electrical

- 3 '2010 Prevalier batteries (total 565 amp. hrs.),
- Shore power, 30-foot power cord,
- 12/110 volt systems.
- battery charger, new 2010

Mechanical

- Volvo Penta 3 cylinder 28 HP diesel with Sail Drive, a great improvement over conventional shafting and runs more smoothly. It also provides much greater maneuverability in reverse. Fresh-water cooled engine with oil/water/temperature alarms, geared 2-blade folding prop.
- Wheel steering w/brake & guard
- Emergency tiller
- Manual head w/holding tank & overboard discharge, new tank level gauge 2010

Hull and Deck

Underbody: Navy-blue hull; teak decks. The decks were refurbished in Dec/2010 - Jan/2011 to assure their good looks and integrity. The boat is built around a massive grid system, which runs throughout the bilge areas and serves to distribute the mast and keel loads, creating a stronger, stiffer structure.

Hull is balsa-cored from the turn of the bilge to the deck and is solid glass lay-up below the waterline, putting the weight and impact-resistance where needed. Decks are balsa-cored with teak overlay. The condition of the deck is good to very good. Hull-to-deck joint is both glassed over and mechanically fastened, creating a strong, rigid, watertight structure.

A Lloyd's Certificate and plaque were awarded to the boat at the time of building.

Anchor locker forward with Lofrans windlass mounted below decks, salt water washdown in locker. Lazarette locker in cockpit. Stainless steel bow and stern rails, double lifelines (new 2009), port and starboard gates (new 2009).

Sails and Rigging

SAILS:

- Main: Full batten Dacron 1996 North very good
- 135% furling Genoa Dacron 1996 North good
- 90% Heavy Weather Jib Dacron 1986 UK excellent
- Forestaysail/Storm Jib Dacron 1989 Hood excellent
- Asymmetrical w/snuffer Nylon 1986 UK excellent
- Spinnaker Nylon 1999 North used once

RIGGING: Ariadne has an inner forestay that allows her to be rigged as a cutter or to accept a storm jib for heavy weather. The inner stay can be disconnected from the deck and attached near the mast for ease in tacking the foresail. She also has a detachable babystay.

- Double-spreader, silver anodized aluminum spar
- Furlex roller-furling on headstay
- Removable inner forestay, babystay
- Navtec hydraulic backstay adjuster
- Solid boom vang (similar to quickvang)
- Main sheet traveler on coach roof forward of companionway
- Lazy jacks
- Wire rigging
- Running backstays
- Whisker pole
- Hall carbon fiber spinnaker pole

WINCHES: Total of 11 Lewmar (7 self tailing, 4 regular) include (2) #46 self-tailing primaries, (2) #40 secondaries, (7) #40 #30 #16 (3) lock-in winch handles, (1) regular winch handle.

OTHER: (8) Easy Lock sheet stoppers

ARIADNE is a 6' draft boat. I - 49.80 J - 14.70 P - 43.30 E - 13.10 Sail Area (Fore): 366.03
SA(Main): 283.62 Total SA: 649.65 SA/DISP: 17.71 New England PHRF Rating: 111

Additional Features

- Chelsea Shipstrike clock and barometer
- White canvas dodger and aft-awning, awning pole
- 4 life jackets
- Radar reflector
- Screens
- Teak cockpit table
- Fuel/water gauges
- Manual/electric bilge pumps, electric new in 2010
- Lofrans windlass w/washdown
- 25# CQR anchor w/150' chain
- Dock lines, fenders
- 2 fire extinguishers, dry chemical and halotron
- Flares, Boat hook, Cockpit cushions
- Propane barbeque and propane tank new in 2009
- Privacy shutter for opening in aft cabin bulkhead
- Stainless steel life raft cradle (not installed)

Exclusions

Owner's personal belongings.

Disclaimer

The Company offers the details of this vessel or yacht in good faith but cannot guarantee or warrant the accuracy of this information nor warrant the condition of the vessel. A buyer should instruct his representatives, agents, or his surveyors, to investigate such details as the buyer desires validated. This vessel or yacht is offered subject to prior sale, price change, or withdrawal without notice.

PHOTOS

2



3



5



4



6



7



8



9



10



11



12



13



14



15



16



17



18



19



20



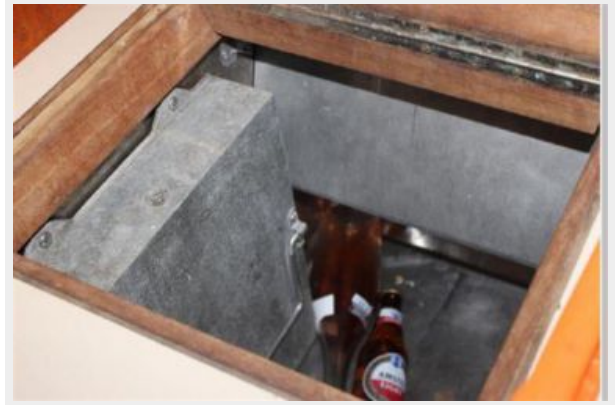
21



22



23



24



25



26



27



28



29



30



31



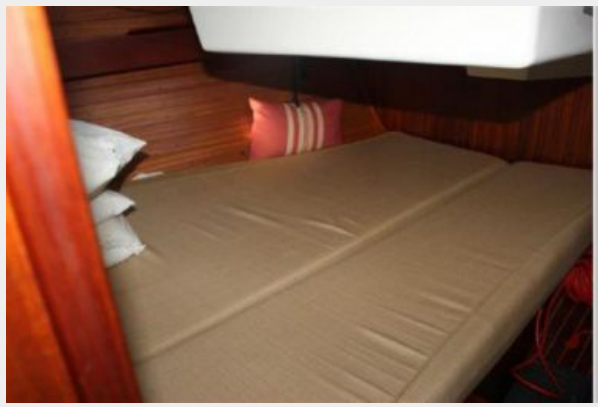
32



33



34



35



36



37



38



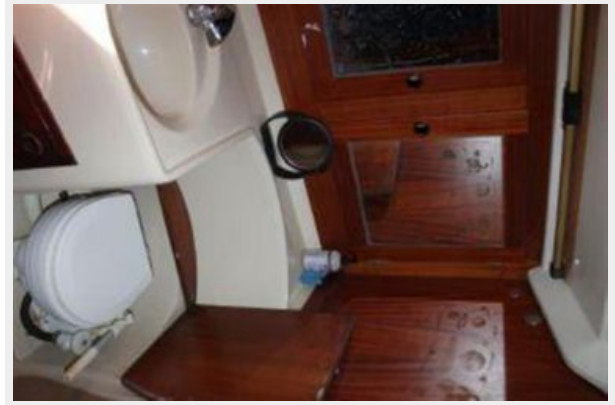
39



40



41



42



43



44



CONTACTS

Andrey Shestakov, leading yacht broker of the sales department of Shestakov Yacht Sales Inc. Shestakov Yacht Sales Inc., the official representative of the Miami/Fort Lauderdale FL headquarters.

Contact details

Email: andrey@shestakovyachtsales.com

Web: shestakovyachtsales.com/en/

Telephones

USA: +1(954)274-4435

Office hours

Monday – Saturday: **9:00 - 21:00** EDT

Sunday: **closed**

Address



Harbour Towne Marina, 850 NE 3rd St,
STE 213, Dania, FL 33004