

STELLA MARIS — BROWARD



Судостроитель: BROWARD

Год постройки: 1993

Модель: Моторная яхта

Цена: ЦЕНА ЯХТЫ ПО ЗАПРОСУ

Местонахождение: Mexico

Длина общая: 105' 0" (32.00m)

Ширина: 23' 0" (7.01m)

Макс. осадка: 6' 11" (2.11m)

Крейс. скорость: 17 Kts. (20 MPH)

Макс. скорость: 21 Kts. (24 MPH)

Купить **Stella Maris — BROWARD** а также выбрать подходящую вам яхту из нашего каталога яхт вам поможет опытный яхтенный брокер Андрей Шестаков. На сегодняшний день компания **Shestakov Yacht Sales Inc.** имеет большое количество яхт в собственном списке продаж, а также тесно сотрудничает со всеми крупными яхтенными производителями по всему миру.

Для того чтобы купить яхту **Stella Maris — BROWARD** а также проконсультироваться по любому вопросу связанному с покупкой, продажей, чартером яхт позвоните по телефону **+7(918)465-66-44**.

ОГЛАВЛЕНИЕ

ОГЛАВЛЕНИЕ	2
ХАРАКТЕРИСТИКИ	3
Обзор	3
Основная информация	3
Размеры	3
Скорость, вместимость и масса	3
Размещение	4
Корпус и палуба	4
Информация о двигателе	4
ПОДРОБНОЕ ОПИСАНИЕ	5
FEATURES & DETAILS	5
Исключения	9
Отказ от ответственности	9
ФОТОГРАФИИ	10
КОНТАКТЫ	33
Контактная информация	33
Телефоны	33
Время работы	33
Адрес	33

ХАРАКТЕРИСТИКИ

Обзор

STELLA MARIS represents a 105' x 23' beam Series Broward offering spacious deck spaces, great interior volume along with her five staterooms accommodating ten guests plus crew quarters. The floor to ceiling windows offer spectacular views and her custom interior designed with cherry wood, granite throughout along with a formal dining area for ten.

Powered by DDEC 12V92's with Ulstein forward facing drives give a 17 knot cruising speed and 21 knot max. Equipped with all the large yacht options to include twin Gens, twin watermakers, stabilizers, bow thruster, tender, etc.

Основная информация

Тип судна: Моторная яхта

Модельный год: 1993

Год постройки: 1993

Страна: Mexico

Открытая палуба мостика: Да

Размеры

Длина общая: 105' 0" (32.00m)

Ширина: 23' 0" (7.01m)

Макс. осадка: 6' 11" (2.11m)

Скорость, вместимость и масса

Крейс. скорость: 17 Kts. (20 MPH)

Макс. скорость: 21 Kts. (24 MPH)

Вместимость воды: 1000 Gallons

Объем топливного бака: 80000 Gallons

Размещение

Всего кают: 5

Всего ком. состава: 6

Каюты экипажа: 2

Комм. состав экипажа: 1

Корпус и палуба

Материал корпуса: Aluminum

Информация о двигателе

Двигатели: 1

Производитель: DDC/MTU

ПОДРОБНОЕ ОПИСАНИЕ

FEATURES & DETAILS

Engine & Amp Mechanical Equipment

- (3) Marine Air 10-ton A/C chillers (new '15) (2) Watermakers, 1500 GPD
- Rolls Royce Ulstein fixed pitch drivers ('06) Naiad Stabilizers
- Hydra power 16" bow thruster
- (3) Racor 2020 fuel filters
- Halon FM200 system
- Raw water-cooled w/risers exhaust system (3) Bilge blowers
- (2) Bronze raw water strainers
- Sea Fire automatic emergency fire suppression (2) Bilge water high alarms
- Rule bilge pumps w/Rule-A-Matic float switches

Electrical Equipment

- John Deere Northern Lights 60KW Generator (overhauled '15 - 22,738 hrs.)
- Kohler 65 KW Generator (overhauled in '15 - 29,771 hrs.)
- Atlas shore power converter
- Xantrex Sine Wave inverter 1000
- (4) Power Tech A6 acid batteries
- Charles 5000 P 12v/50-amp battery & 12v charger
- Charles 5000P 24v/60-amp battery & 24v charger (2) Vanner 60-amp battery equalizers

Aft Deck Equipment

- Teak dining table w/loose dining chairs & cover (2) Ideal aft warping capstans
- (2) Boarding gates, port & starboard
- (2) Bollard cleats
- (6) Overhead lights
- (2) JL stereo speakers
- Centerline boarding gate for passerelle Stainless steel handrails
- 110v outlet

Deck Equipment and Tenders

- 15' Nautica Tender w/Yamaha 90HP O/B \
- Dive Compressor Swim platform w/shower
- (2) Anchors & Fortress FX85 spare anchor BBQ on Sun Deck Mediterranean stern boarding passerelle Maxwell 5000lb anchor windlass system
- (2) Switlik 8-man life rafts

Flybridge Electronics:

- Furuno Navet 12" TZ multi-function display for Chart plotter/ Radar / Fish finder
- Simrad FU80 joystick for AP70 autopilot
- Ritchie compass
- (2) Detroit Diesel electronic panels
- Icom IC-4246 GPS VHF

Flybridge Electronics and Amp Equipment

- Main helm station to port, wing station to starboard
- L-shaped bench seating, port & starboard with table. Built-in lounge sun pads, aft
- Built-in u-shaped seating w/table centerline Fixed aluminum top w/canvas cover
- Wet bar
- Opacmare 1700lb tender crane
- 15' Boston Whalers tender w/Mercury O/B (2) Canister life rafts
- (2) Chocks for waverunners
- ACR EPIRB

Electronics / Navigational Equipment

- Garmin GPS Map 720
- AP70 Autopilot w/QS80 joystick ('14)
- (2) Furuno 15" Navnet TZ 2-touch multi-function displays for Chart plotter/ Radar/ Fish Finder Central Furuno 15" Navnet TZ 2-touch multi-function display for GPS
- (2) Detroit Diesel electronic displays
- Detroit Diesel marine power throttles
- Isis 700B Monitoring system
- Sea 157 VHF w/remote mic
- (2) C-Plath magnetic compass
- C Plath gyro compass
- B&G depth sounder
- B&G Speedo
- AIS w/new transmitter '18
- (5) Icom M72 handheld VHF's
- Furuno depth sounder
- Naiad stabilizer control
- Bow thruster control
- (2) Shipmate RS 8110 VHF
- Icom M506 VHF radio
- Broward safety system monitor
- L-shaped settee w/ plexi table

Crew Quarters

- The crew quarters are accessed from the port side forward of the galley.
- Captain's cabin w/queen berth & private bath

- (2) Crew cabins forward and have over/under berths, port & starboard crew lounge with bench seating, phone & intercom system

(5) Guest Staterooms

- (4) Guest staterooms are below deck. Those staterooms are accessed from the starboard foyer.
(3) Staterooms have queen sized bed and one stateroom has twin beds.

All staterooms equipped with:

- Double dressers
- Shoji screen window treatment
- Bookshelves & custom headliners
- Ensuite bath w/full shower
- Twin stateroom has ensuite head with Jacuzzi tub
- Custom paneling and recessed lighting Intercom, phone systems.
- Utility closet in the foyer w/ Maytag washer & dryer

Master Stateroom

- King size berth on centerline
- Built-in dressers, port & starboard
- (3) Built-in cedar lined hanging lockers
- His & Her master bath w/shower
- Custom vanities w/ translucence sink & custom Kohler fixtures Microphor heads
- Kohler bidet
- Granite flooring

Galley

- (2) Traulsen stainless steel refrigerators w/glass panels
- Thermador 5-burner cooktop (2) Isotherm ice makers Sub-Zero icemaker
- GE top loader freezer
- Information and Photos
- Miele dishwasher
- Thermador warming tray
- U-line wine cabinet w/custom glass Stainless steel wine cooler
- Double stainless-steel sink
- Kitchen Aid trash compactors
- Capesso coffee makers
- Kenmore Elite stainless-steel microwave

Main Salon and Dining

- Custom U-shaped sectional sofa

- Circular glass cocktail table w/stone base
- Storage cabinets w/bottle & glass storage, port & starboard
- (3) Swivel occasional chairs
- (2) Ottomans
- Sit down bar located aft w/ (3) chairs
- U-line refrigerator w/ icemaker & storage
- Custom 60" round dining table w/leaf extensions & dining chairs
- Marble flooring w/custom inlay in dining area
- Leather upholstered overhead panels and bulkheads
- Oversized windows to port & starboard
- (2) Tuners, 200-disc multi-player CD's; 200 DVD video multiplayer w/full library Main deck foyer w/custom granite flooring

On Deck Head:

- Mirrored bulkhead
- Mirrored overhead
- Custom vanity w/black sink & custom fixtures

Accommodations

- STELLA MARIS was built as "Fantasy" in 1993 by Broward Marine which illustrated a progressive vision of elegance combined with the most elaborate interior of that time period. She was built as a "study of firsts" most notably the builder's new Euro-style hull design and space configuration.
- Her immense interior volume is equal to the space found on much larger yachts. Her ample 23' beam provides the extra-large staterooms and affords the convenience and privacy of two-thirds walk-around side decks without compromising the main salon's volume.
- From both inside and outside, the yacht's enormous floor-to-ceiling main salon windows are her most distinctive feature offering unobstructed panoramic views. Her formal dining area is located forward of the main salon with seating for up to ten. Cherry wood, granite and strategic lights are used throughout the vessel.
- The on-deck master stateroom is tastefully appointed and features His and Her baths. Each of the yacht's four guest staterooms located on lower deck, was designed with its own distinct theme and features private baths and full entertainment center.
- STELLA MARIS aft engine room houses twin 16V92TA's equipped with Detroit Diesel electronic console monitoring system coupled to Ulstein tractor-style drives. This impressive power package pushes to an 18-knot continuous cruise. Her pilothouse features Isis ship's monitoring system and a full array of navigational and communications electronics

Исключения

При продаже яхты исключаются личные вещи владельца.

Отказ от ответственности

Компания предоставляет описание судна или яхты добросовестно, но не может гарантировать точность этой информации, а также не ручается за техническое состояние. Покупатель должен проинструктировать своих агентов или оценщиков исследовать представленную информацию более подробно, по собственному желанию. Продажа судна или яхты, изменение цены или снятие с продажи будет происходить без предварительного уведомления.

ФОТОГРАФИИ



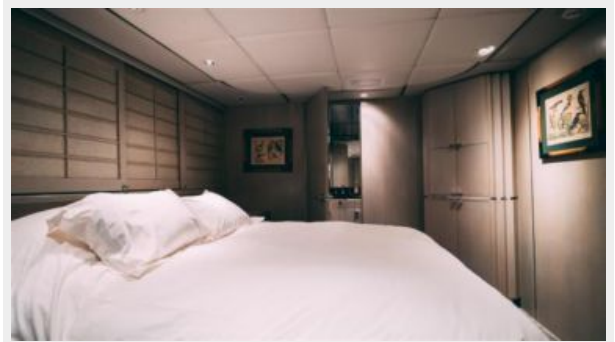




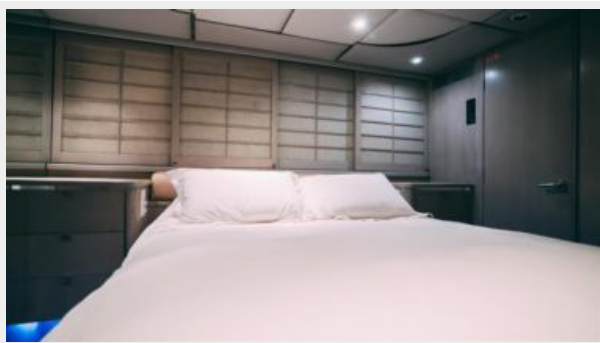


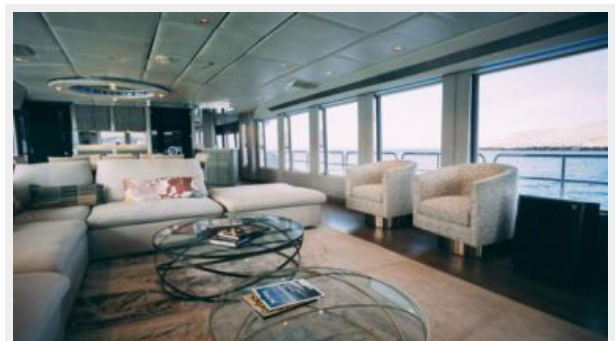
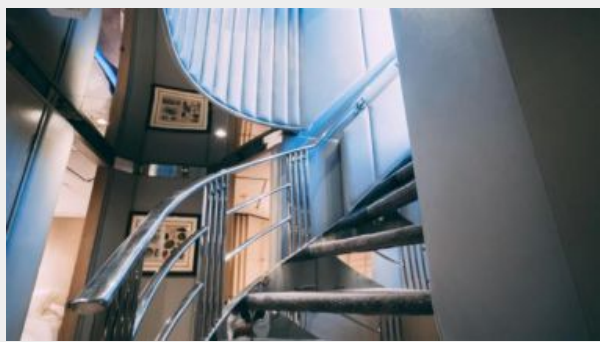


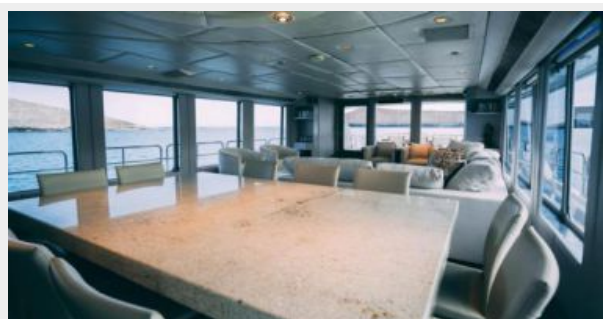


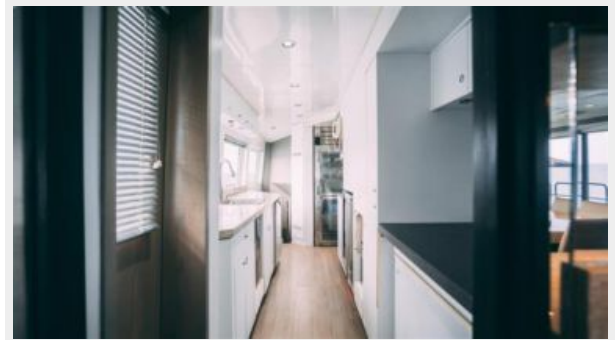


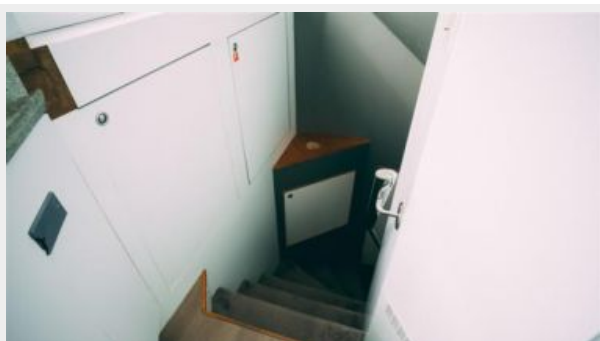


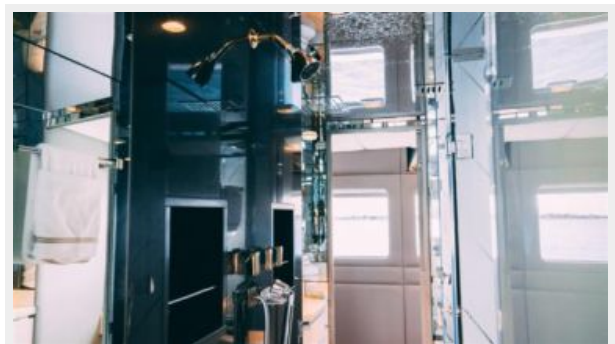


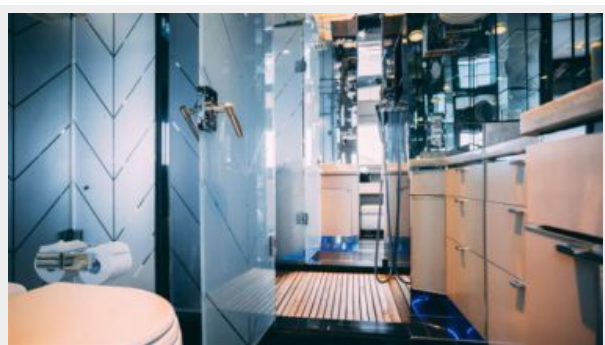




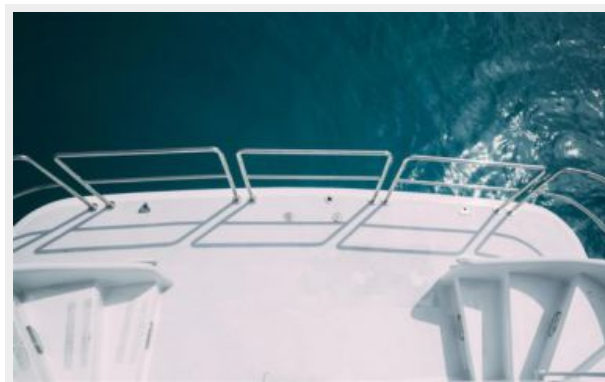
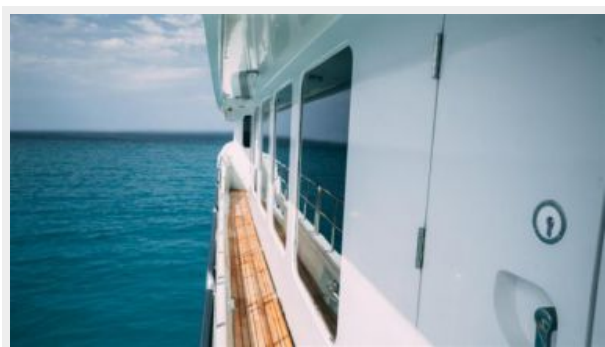
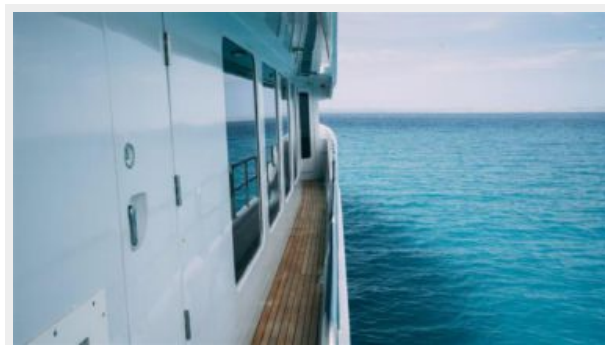
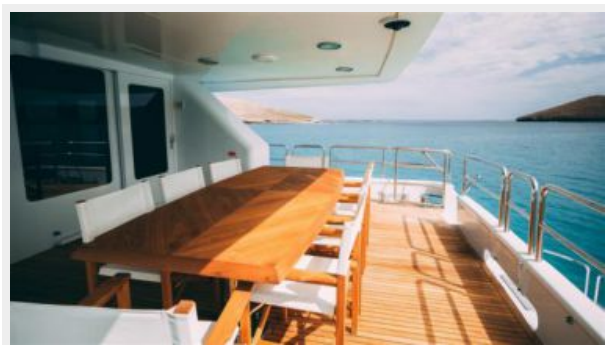
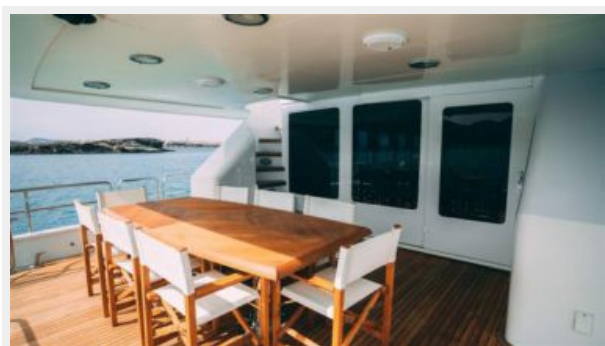


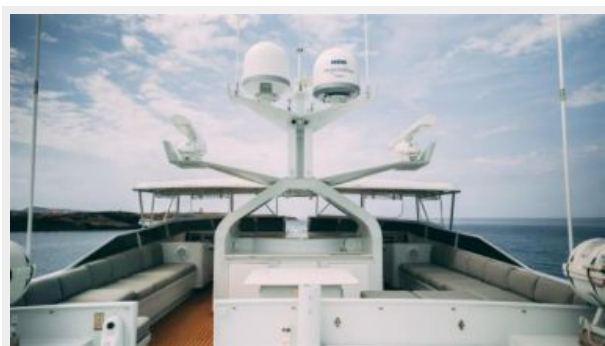






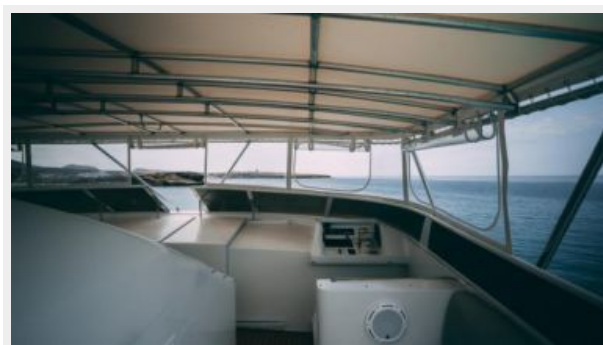




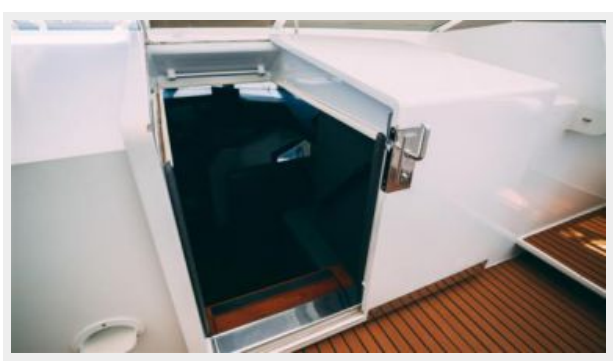












КОНТАКТЫ

Андрей Шестаков (Andrey Shestakov) – ведущий яхтенный брокер отдела продаж яхт и судов компании Shestakov Yacht Sales Inc. Официальный представитель Shestakov Yacht Sales Inc. для русскоговорящих клиентов в центральном офисе компании в Майами/Форт Лодердейл/Флорида/США.

Контактная информация

Email: andrey@shestakovyachtsales.com

Web: shestakovyachtsales.com

Телефоны

Краснодарский край: **+7(918)465-66-44**

США, Майами, Флорида: **+1(954)274-4435**

Время работы

Понедельник – Суббота: **9:00 - 21:00**
EDT

Воскресенье: **Закрито**

Адрес



Harbour Towne Marina, 850 NE 3rd St,
STE 213, Dania, FL 33004