

## IMPECCABLE 5 — INTREPID



**Builder:** INTREPID

**Year Built:** 2014

**Model:** Motor Yacht

**Price:** PRICE ON APPLICATION

**Location:** United States

**LOA:** 47' 0" (14.33m)

**Beam:** 13' 8" (4.17m)

**Cruise Speed:** 43.4488121 Kts. (50 MPH)

**Max Speed:** 60.82833694 Kts. (70 MPH)

Our experienced yacht broker, Andrey Shestakov, will help you choose and buy a yacht that best suits your needs **Impeccable 5 — INTREPID** from our catalogue. Presently, at Shestakov Yacht Sales Inc., we have a wide variety of yachts available on our sale's list. We also work in close contact with all the big yacht manufacturers from all over the world.

If you would like to buy a yacht **Impeccable 5 — INTREPID** or would like help answering any questions concerning purchasing, selling or chartering a yacht, please call **+1(954)274-4435**

---

# TABLE OF CONTENTS

---

TABLE OF CONTENTS	2
SPECIFICATIONS	3
Overview	3
Basic Information	3
Dimensions	3
Speed, Capacities and Weight	4
Accommodations	4
Hull and Deck Information	4
Engine Information	4
DETAILED INFORMATION	5
Broker Remarks	5
Features	5
Manufacturer Description	7
Exclusions	7
Disclaimer	8
PHOTOS	9
Impeccable_Exterior-39	14
CONTACTS	16
Contact details	16
Telephones	16
Office hours	16
Address	16

---

# SPECIFICATIONS

---

## Overview

---

### 2015 Intrepid Panacea 475 "Impeccable 5"

im-pec-ca-ble

/im'pekeb(e)l/

Definition: In accordance of the Highest Standards; Faultless.

#### Brokers Comment:

In my twenty years as a yacht broker I can say with all honesty that I have witnessed two boats that were a perfect "10's" One many years ago and this 47 Intrepid "IMPECCABLE 5" that's it!

Original owner of many boats, keen eye for design. Intrepid actually looked at all the custom items below and decided to make this particular boat, the display boat at the Miami International Boat Show.

Custom Fiberglass Hard Top, Arch , Seating, Bow Rail, Interior, Paint Scheme, Painted Engines..... the name says it all. IMPECCABLE!

---

## Basic Information

---

**Category:** Motor Yacht

**Model Year:** 2015

**Year Built:** 2014

**Country:** United States

---

## Dimensions

---

**LOA:** 47' 0" (14.33m)

**Beam:** 13' 8" (4.17m)

---

## Speed, Capacities and Weight

---

**Cruise Speed:** 43.4488121 Kts. (50 MPH)    **Max Speed:** 60.82833694 Kts. (70 MPH)

**Displacement:** 28000 Pounds

**Water Capacity:** 160 Gallons

**Holding Tank:** 30 Gallons

**Fuel Capacity:** 560 Gallons

---

## Accommodations

---

**Total Cabins:** 1

**Sleeps:** 2

**Total Heads:** 1

---

## Hull and Deck Information

---

**Hull Material:** Fiberglass

---

## Engine Information

---

**Engines:** 4

**Manufacturer:** Seven Marine

**Model:** 627SV's Quad

**Engine Type:** Outboard

**Fuel Type:** Gas/Petrol

---

# DETAILED INFORMATION

---

## Broker Remarks

---

### 2015 Intrepid Panacea 475 "Impeccable 5"

im-pec-ca-ble

/im'pekeb(e)l/

Definition: In accordance of the Highest Standards; Faultless.

Brokers Comment:

In my twenty years as a yacht broker I can say with all honesty that I have witnessed two boats that were a perfect "10's" One many years ago and this 47 Intrepid "IMPECCABLE 5" that's it!

Original owner of many boats, keen eye for design. Intrepid actually looked at all the custom items below and decided to make this particular boat, the display boat at the Miami International Boat Show.

Custom Fiberglass Hard Top, Arch , Seating, Bow Rail, Interior, Paint Scheme, Painted Engines..... the name says it all. IMPECCABLE!

---

## Features

---

### Engines and Controls:

- 2020,627's QUAD 627 HP. 62 hours (8-11-2020) Brand New with 3 Year Warranty. (Custom Imron Paint) Carbon Fiber Package
- Remote for Changing Color LED Lights on Engines.
- Joystick,Dual Digital Displays.
- 4 kw Fisher Panda generator with 25 gal diesel tank. 110 hours. (8-11-2020)

### Electronics and Electric:

- Three Garmin 16" GPS map 8616 latest and most current software mounted on Black Plexiglass.
- Garmin GPS / WAAS Antenna with heavy duty SS mount.
- Garmin Vision Charting For South Florida and Bahamas.
- Garmin GMR 604hxd High Definition 72 Mile Open Array Radar.
- Garmin GSD24 Dual Frequency Depth Sounder Module.
- Garmin 600 Watt Dual Frequency Thru Hull Transducer
- Garmin GM120 Digital Depth Repeater With Bronze Thru Hull Smart Transducer.
- ICOM M504B Rear Mount VHF with DCS Operation and Remote Mic in Cabin.

- ICOM Full Function Command Mic for Console Mounted Application.
- Shakespeare 8' VHF Antenna High Gloss with SS Mount.
- Fusion Marine MSA V700i AM/FM/DVD Sirius Ready Stereo Player.
- Fusion Marine Remote Control For Dash Mounted Application.
- Fusion Marine Uni-Dock for USB, I-Phone,Android Devise Hookup to MSA V700.
- Sirius Radio Module With External Marine Antenna for Fusion Stereo.
- Pair JL Audio 6.5" Sport Grill Marine Speakers.
- 4x Pair JL Audio 8.8" Sport Grill Marine Speakers.
- 2x JL Audio 10.0" Sport Grill Marine Subwoofer.
- JL Audio M800/8 Marine Sic Channel 800 Watt Marine Amplifier.
- JL Audio M600/6 Marine Four Channel 600 Watt Marine Amplifier.
- Shakespeare 8' High Gloss AM/FM Antenna with SS Mount.
- 2 Multi-Color Underwater Lights.
- 2 LED Lights Under Hard Top Facing Aft.
- 24,000 BTU A/C with Split System.
- Bow Thruster.
- Shore Power with Battery Charger.
- Electric Hot Water Heater 8 Gallon.
- Simrad AP28 High Performance Hydraulic Auto Pilot System for Latham Streeing.
- FLIR M625XP Thermal Camera With Pan and Tilt to Garmin Display.
- Dual Trumpet Horns.
- 2x Marinco 12volt Accessory Adaptor Inlet Plugs.
- GOST Tracking and Monitoring Package.
- 36" Visio TV in Cabin.

**Deck:**

- Custom Powder-coated Heavy Aluminum Bow Rail
- Windlass w/300 ' Line/20' Chain Polished Stainless Steel Plough Anchor
- Custom Aluminum Arch with Fiberglass Top.
- Hull Side Door Swing In with Fold Out Ladder.
- Cockpit LED lights.
- Forward Deck Seating with Cushions. Bow area has an oversized sun pad and a wraparound forward seating creating a VIP lounge that converts to an alfresco dining area.
- Custom Tucci Umbrella with Proper Gunwale Mount and Cover.
- Removable Rear Bench Seat.
- Custom Triple Helm Seats With Triple Aft Facing Including Arm Rest On Both FWD and Aft Facing.
- Livorno Steering Wheel.
- Line Helm Seat Stainless Steel Cooler, Drawer Type.
- Windshield Acrylic Clear with White Bottom Border, Also Angled to Match Style Lines of the Boat.
- 6 Rod Holders Under Gunwale 3 ea. side.
- 4 Rod Holder in Gunwale.

- 6 Rod Holders Aft Hard Top.
- Freshwater Shower Port Side Gunwale.
- 2 Cockpit Folding Steps Under Gunwale.
- Fish Box With Ball Valve and Macerator.
- Enormous Storage Directly Behind Helm and Several More Storage Lockers Throughout.
- Freshwater Wash Down in Windlass Compartment.

### Cabin:

- Interior is High Gloss Maple.
- Flooring Sole Teak and Maple.
- Corian Countertops Witch Hazel.
- Salon V Berth Forward with Filler Cushion and Table.
- Large Private Head With Separate Standup Shower.
- Franklin Chef Microwave.
- Isotherm Refrigerator/ Freezer.
- Electric Head with Holding Tank and Overboard Discharge.
- Assorted Pillows

### Exclusions:

- Seller's Personal Items will be removed by Owner, however Owner will supply all life jackets and safety equipment as well as 4 lines and 2 fenders.

## Manufacturer Description

---

Welcome to forty-seven feet of sheer power and unadulterated pleasure. Named for the Greek goddess of universal remedy, this wave-crushing offshore machine does it all, in incomparable luxury and style. The helm features a state-of-the-art platform for electronics, fold-down armrests, footrests, LED lighting, and a convenient cooler. An expansive cockpit features rear seating, fish boxes/storage lockers. An oversized sunpad and wraparound forward seating create a versatile VIP lounge that converts to an al fresco dining area. The cabin features a roomy head with a shower, vanity and sink. The galley includes hard surface countertops, refrigerator, sink and high-end cabinetry. When you're ready to relax below deck, the spacious V-berth provides luxurious accommodations.

## Exclusions

---

Owner's personal belongings.

---

## Disclaimer

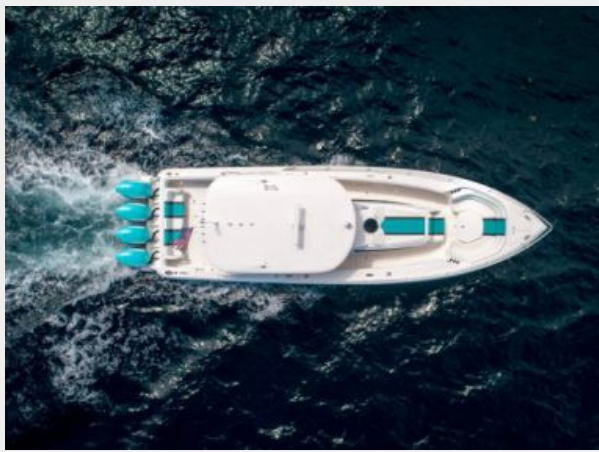
---

The Company offers the details of this vessel or yacht in good faith but cannot guarantee or warrant the accuracy of this information nor warrant the condition of the vessel. A buyer should instruct his representatives, agents, or his surveyors, to investigate such details as the buyer desires validated. This vessel or yacht is offered subject to prior sale, price change, or withdrawal without notice.

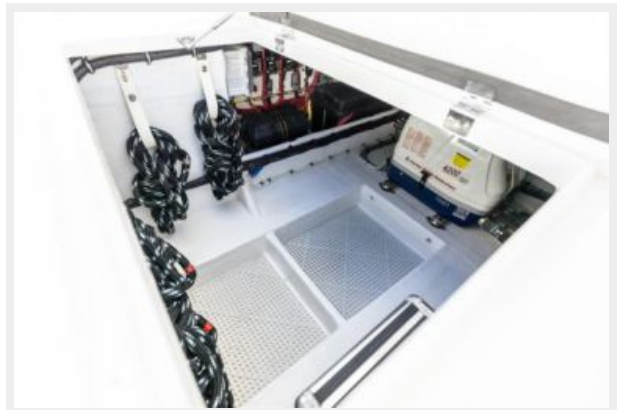


# PHOTOS







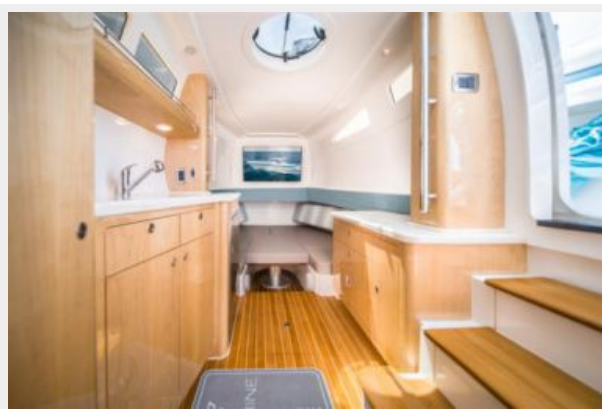


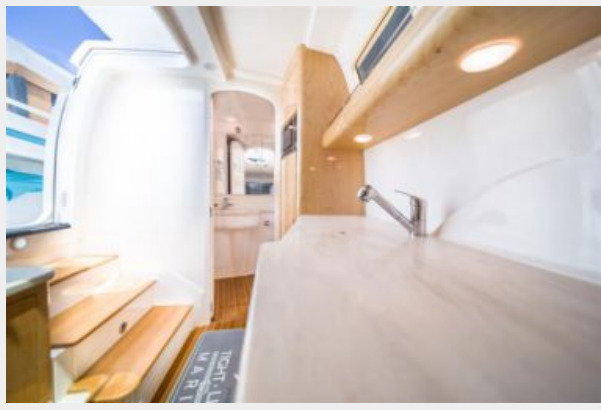






## Impeccable\_Exterior-39





# CONTACTS

---

Andrey Shestakov, leading yacht broker of the sales department of Shestakov Yacht Sales Inc. Shestakov Yacht Sales Inc., the official representative of the Miami/Fort Lauderdale FL headquarters.

## Contact details

---

Email: **andrey@shestakovyachtsales.com**

Web: [shestakovyachtsales.com/en/](http://shestakovyachtsales.com/en/)

## Telephones

---

USA: **+1(954)274-4435**

## Office hours

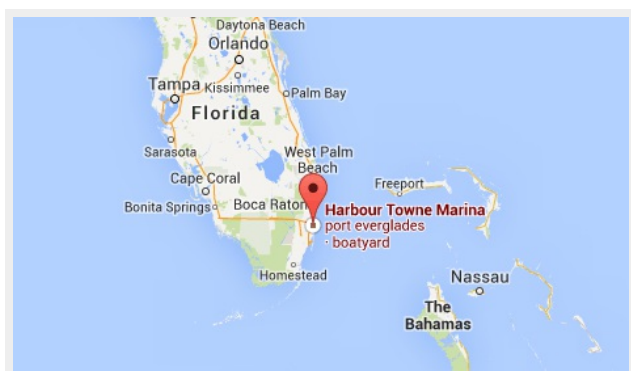
---

Monday – Saturday: **9:00 - 21:00 EDT**

Sunday: **closed**

## Address

---



Harbour Towne Marina, 850 NE 3rd St,  
STE 213, Dania, FL 33004