

1991 NAUTOR SWAN 46 MK II — NAUTOR'S SWAN



Судостроитель: NAUTOR'S SWAN

Длина общая: 46' 0" (14.02m)

Год постройки: 1991

Модель: Представительская парусная
яхта

Цена: ЦЕНА ЯХТЫ ПО ЗАПРОСУ

Местонахождение: United States

Купить 1991 Nautor Swan 46 MK II — NAUTOR'S SWAN а также выбрать подходящую вам яхту из нашего каталога яхт вам поможет опытный яхтенный брокер Андрей Шестаков. На сегодняшний день компания Shestakov Yacht Sales Inc. имеет большое количество яхт в собственном списке продаж, а также тесно сотрудничает со всеми крупными яхтенными производителями по всему миру. Для того чтобы купить яхту 1991 Nautor Swan 46 MK II — NAUTOR'S SWAN а также проконсультироваться по любому вопросу связанному с покупкой, продажей, чартером яхт позвоните по телефону **+7(918)465-66-44**.

ОГЛАВЛЕНИЕ

ОГЛАВЛЕНИЕ	2
ХАРАКТЕРИСТИКИ	4
Обзор	4
Основная информация	4
Размеры	4
Размещение	4
Корпус и палуба	5
Информация о двигателе	5
ПОДРОБНОЕ ОПИСАНИЕ	6
Overview	6
Исключения	9
Отказ от ответственности	9
ФОТОГРАФИИ	11
3	11
2	11
4	11
5	11
7	12
6	12
8	12
9	12
10	13
11	13
12	13
13	13
14	14
15	14
16	14

17	14
18	15
19	15
20	15
21	15
КОНТАКТЫ	16
Контактная информация	16
Телефоны	16
Время работы	16
Адрес	16

ХАРАКТЕРИСТИКИ

Обзор

Price Just Reduced from: \$194,990 to \$174,990! This is 1 of only 28 of the roomy 46 MKII's built by Swan! Anyone can own a Beneteau! If you are interested in doing more than cruising the harbor on day trips, if you want to do blue water sailing, cross an ocean, or all the oceans this is your boat! Nautor Swan is known as one of the best builders of passage making boats in the world! With this well-maintained, deep-keeled boat, almost no destination is out of your reach! She has a beautiful teak interior, in excellent condition. She is a two stateroom/two head version of the MKII Swan 46, featuring the double on centerline aft and an offset double to port forward. She has had many upgrades over the years (see full listing for details). She has lots of miscellaneous options including a Cockpit table, Dinghy motor davit lift, EPIRB, 180' of chain, Fortress anchor and secondary anchor, Leather on wheel, Misc. block and tackle and more. Don't let this one get away. Call to schedule an appointment to see her. Note: All Brokerage boats are sold "as is" with no warranty expressed or implied. Any representation of vessel condition and equipment are that of the seller not its agent.

Основная информация

Тип судна: Представительская парусная **Подкатегория:** Крейсерская яхта
яхта

Модельный год: 1991

Год постройки: 1991

Страна: United States

Размеры

Длина общая: 46' 0" (14.02m)

Размещение

Всего кают: 2

Всего ком. состава: 2

Корпус и палуба

Материал корпуса: Fiberglass

Информация о двигателе

Двигатели: 1

Производитель: Volvo Penta

Модель: MD22

Тип двигателя: Inboard

Тип топлива: Diesel

ПОДРОБНОЕ ОПИСАНИЕ

Overview

Accommodations

She is a two stateroom/two head version of the MKII Swan 46, featuring the double on centerline aft and an offset double to port forward. There is one pilot berth to port in the main salon, with an entertainment center/bookshelves on the stbd side. Both settees, port and stbd, can also be used as berths. The Galley runs fore/aft on the port side with deep freeze/refrigeration and plenty of lockers and counter space. The full sized navigation station is opposite the galley, , with main companionway on center.

- The owner's mattress in cabin is made of memory foam
- Collapsible hanging rod in fwd. head
- Half hinges on main salon table leaf
- New main salon/chart table/fwd seat upholstered in 2009
- Screens for all Golot hatches
- Interior varnished on regular basis
- New floorboards in 1997
- Extra portlights from aft cockpit into aft cabin Golot 34.14

Galley

- New faucets in galley and both heads
- Additional fold up shelf in galley
- 220V microwave (new)
- Refrigeration/freezer, both engine driven & shore power with new engine driven compressor in 2003, with removable sst baskets in freezer
- Front loading refrigerator 4.6 cu ft
- Top loading freezer 6.2 cu ft.
- 3 Burner Propane stove
- Double ss sinks
- Pressurized hot and cold water with heating element replaced in 2006, variable speed

pump

- Extractor fan over stove
- Trash bin
- Corian countertops
- SST holding tank with y valve for forward head, manual pump
- Sea water at galley

Plumbing

- New faucets in galley and both heads
- Four water tanks on manifold system
- Air conditioning, 220V
- SST holding tank with y valve for forward head, manual pump
- New hoses in heads (2009)
- Seacocks serviced (2009)
- New fire extinguishers in cabinets and engine compartment
- Electric bilge pump
- Electric shower sump pumps
- Sea water at galley
- PAR toilets
- Interior fans

Electrical/Electronics

- 220/110v Shore power
- 24V wiring
- Main switchboard in nav area with trip free circuit switches and volt/amp meters
- Landline telephone/cable TV outlet
- Tri color masthead light
- Raymarine E80 display at nav station, 2009
- Garmin GPS in cockpit 2009
- B&G Hydra 2000 repeaters, one in cockpit and two at nav station
- Shipmate RS8300 VHF, handsets in nav station and cockpit
- Radar, 2014
- Autohelm Autopilot (hydraulic pump replaced 2003)
- 13" Hitachi TV with Sharp DVD/VCR, system in multi standard (PAL, SECAM, NTSC)
- Speakers in fwd cabin, aft cabin & cockpit
- Alpine stereo with 6 disc changer

- Rockport speakers in main salon
- Suunto 6" steering compass

Deck and Hull

- Bulb keel and elliptical rudder gives high performance and improved stability along with the taller 3 spreader rig (by approx. 2')
- Anodized aluminum toerail
- SST pulpit and pushpit
- Cockpit stowage lockers each side
- 60" anchor locker forward with hatch access from deck
- In 2002, 13mm teak decks hand laid by European Custom Yachts, seams using Teak Decking Systems with new Harken traveller system
- In 2008/2009, Lyman Morse in Thomaston, Maine did a full bottom restoration
- Hull is white awlgrip
- Hurth transmission rebuilt at time of engine change in 2002 with new gearbox cooler in 2007
- New cutlass bearing 2009
- New packing sealing shaft seal 2009
- New engine exhaust elbow 2009
- New engine batteries, 2009
- Engine hours c 2,447
- New service batteries 2014
- Battery switch in engine compartment
- Jabsco Flexmount 3" blower for engine, 2006
- Teleflex Marine engine controls for side mounting 2006
- Cables for engine controls 2006
- All winches serviced 2010
- Fuel tanks cleaned winter 2006/07
- New Iofrans windlass 2006
- 2 x Lewmar 66CST genoa sheet winches
- 2 x Lewmar 56CST spinnaker sheet winches
- 2 x Lewmar 52CST genoa halyard winches
- 1 x Lewmar 46CST staysail/pole lift winch
- 2 x Lewmar 46CST winches for mainsheet
- 2 x Lewmar 52CST winches for spinn halyards
- 1 x Lewmar 46CST for pole inboard/downhaul
- 1 x Lewmar 46CST for main sail halyard
- 1 x Lewmar 46CST for foreguy
- Two blade max prop

Sails & Rigging

- Triple spreader Nautor alum rig with rod rigging 1995
- Rig inspection done winter 2008-09 no issues
- Running backstays, 2007
- Navtec-12 hydraulic vang- 175 backstay, 10S inner forestay and 10S backstay (vang cylinder rebuilt 2008-09)
- Stern swim ladder ladder with gate in pushpit
- Gates in lifeline port & stbd
- Main companionway dodger
- Staysail
- 145% roller furling jib
- 150% roller furling jib, lightly used
- Spinnaker with ATI stock

Additional Equipment Included

- Cockpit table
- Dinghy motor davit lift
- EPIRB
- 180' chain, Fortress anchor, secondary anchor
- 45 lbs CQR anchor (main anchor)
- Leather on wheel
- Misc. block and tackle

Исключения

При продаже яхты исключаются личные вещи владельца.

Отказ от ответственности

Компания предоставляет описание судна или яхты добросовестно, но не может гарантировать точность этой информации, а также не ручается за техническое состояние. Покупатель должен проинструктировать своих агентов или оценщиков исследовать представленную информацию более подробно, по собственному желанию. Продажа судна или яхты, изменение цены или снятие с продажи будет происходить без

предварительного уведомления.

ФОТОГРАФИИ

2



3



4



5



6



7



8



9



10



11



12



13



14



15



16



17



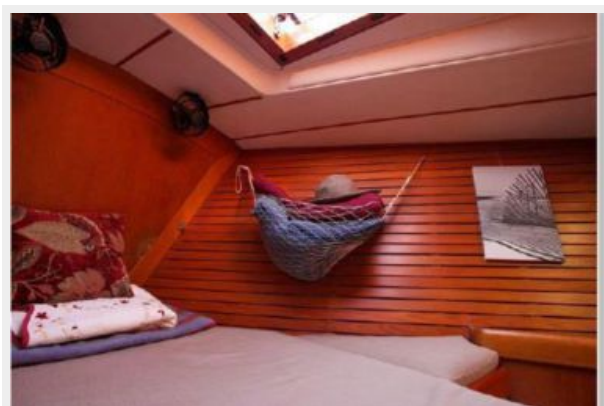
18



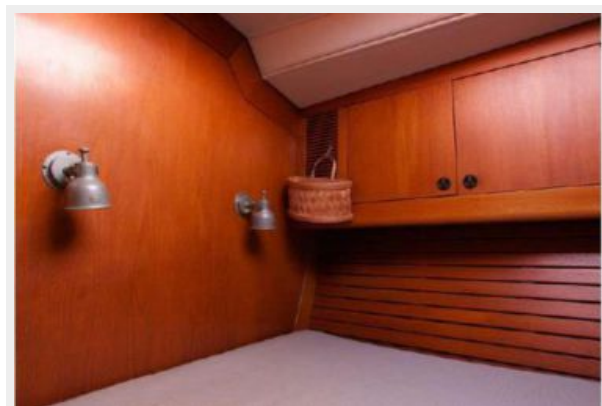
19



20



21



КОНТАКТЫ

Андрей Шестаков (Andrey Shestakov) – ведущий яхтенный брокер отдела продаж яхт и судов компании Shestakov Yacht Sales Inc. Официальный представитель Shestakov Yacht Sales Inc. для русскоговорящих клиентов в центральном офисе компании в Майами/Форт Лодердейл/Флорида/США.

Контактная информация

Email: andrey@shestakovyachtsales.com

Web: shestakovyachtsales.com

Телефоны

Краснодарский край: **+7(918)465-66-44**

США, Майами, Флорида: **+1(954)274-4435**

Время работы

Понедельник – Суббота: **9:00 - 21:00**
EDT

Воскресенье: **Закрито**

Адрес



Harbour Towne Marina, 850 NE 3rd St,
STE 213, Dania, FL 33004