

KATY CORRINE II — AMERICAN TUG



Builder: AMERICAN TUG

Year Built: 2018

Model: Trawler

Price: PRICE ON APPLICATION

Location: United States

LOA: 39' 0" (11.89m)

Beam: 13' 3" (4.04m)

Max Draft: 3' 5" (1.04m)

Cruise Speed: 8 Kts. (9 MPH)

Max Speed: 17 Kts. (20 MPH)

Our experienced yacht broker, Andrey Shestakov, will help you choose and buy a yacht that best suits your needs **Katy Corrine II — AMERICAN TUG** from our catalogue. Presently, at Shestakov Yacht Sales Inc., we have a wide variety of yachts available on our sale's list. We also work in close contact with all the big yacht manufacturers from all over the world.

If you would like to buy a yacht **Katy Corrine II — AMERICAN TUG** or would like help answering any questions concerning purchasing, selling or chartering a yacht, please call **+1(954)274-4435**

TABLE OF CONTENTS

TABLE OF CONTENTS	2
SPECIFICATIONS	6
Overview	6
Basic Information	6
Dimensions	6
Speed, Capacities and Weight	6
Accommodations	6
Hull and Deck Information	7
Engine Information	7
DETAILED INFORMATION	8
MAIN DESCRIPTION	8
WALK-THROUGH AFT DECK	8
SALON/GALLEY	8
MAIN STATEROOM	8
GUEST QUARTERS	9
ELECTRONICS PACKAGING	9
ENGINE / MECHANICALS	9
DISCLAIMER	9
Exclusions	10
Disclaimer	10
PHOTOS	11
1	11
2	11
3	11
4	11
5	11
6	11
7	12

8	12
9	12
10	12
11	12
12	12
15	13
16	13
17	13
18	13
19	13
20	13
23	14
22	14
24	14
25	14
26	15
27	15
28	15
29	15
30	15
31	15
32	16
33	16
35	16
36	16
38	17
37	17
39	17
40	17

41	18
42	18
42A	18
43	18
44	18
45	18
46	19
47	19
48	19
49	19
50	19
52	19
53	20
54	20
55	20
56	20
58A	21
57	21
60	21
59	21
61	22
62	22
62A	22
62AB	22
63	22
64	22
66	23
67	23
69	23

CONTACTS	24
-----	-----
Contact details	24
-----	-----
Telephones	24
-----	-----
Office hours	24
-----	-----
Address	24
-----	-----

SPECIFICATIONS

Overview

39' 2018 American Tug 395 Gorgeous American Tug 395, all of the features of this magnificent tug can be viewed on the factory web site as she is newly spec'd for those looking for additional detail. She is elegantly waiting at a slip in Northport, MI enjoying her journey into our Region. Excellent fuel economy with a very stylish, well appointed tug/trawler furnishings. Several upgrades to include electronic packaging and tender are included in this solid offer. A 2018 will provide many years of nearly maintenance free cruising should you decide to do the Great Loop in style and comfort!

Basic Information

Category: Trawler

Model Year: 2018

Year Built: 2018

Country: United States

Dimensions

LOA: 39' 0" (11.89m)

Beam: 13' 3" (4.04m)

Max Draft: 3' 5" (1.04m)

Clearance: 14' 7" (4.44m)

Speed, Capacities and Weight

Cruise Speed: 8 Kts. (9 MPH)

Max Speed: 17 Kts. (20 MPH)

Displacement: 25000 Pounds

Water Capacity: 120 Gallons

Holding Tank: 45 Gallons

Fuel Capacity: 400 Gallons

Accommodations

Total Cabins: 1

Hull and Deck Information

Hull Material: Fiberglass

Engine Information

Engines: 1

Manufacturer: Cummins

Model: QSB 380

Engine Type: Inboard

Fuel Type: Diesel

DETAILED INFORMATION

MAIN DESCRIPTION

39' 2018 American Tug 395 Gorgeous American Tug 395, all of the features of this magnificent tug can be viewed on the factory web site as she is newly spec'd for those looking for additional detail. She is elegantly waiting at a slip in Northport, MI enjoying her journey into our Region. Excellent fuel economy with a very stylish, well appointed tug/trawler furnishings. Several upgrades to include electronic packaging and tender are included in this solid offer. A 2018 will provide many years of nearly maintenance free cruising should you decide to do the Great Loop in style and comfort!

WALK-THROUGH AFT DECK

Pristine American Tug 395, shows as new model. Well cared for late model 395. Tender housed conveniently on swim platform with easy load and unloading. Easy access to salon/galley area or to the large sun deck above via ladder. Entry to bow is best through either doorway from the lower helm station area. Wide deck path with high railings make for easy transition to lines or bow.

SALON/GALLEY

Nicely appointed salon and galley area all with high-end furnishings make for convenient and attractive seating or meal preparation in spacious galley area. Tasteful wood trim accent the attractive American Tug standards which are simply the finest. Thoughtful placement of electronics and elevated pilot house with plenty of high grade windows for unlimited viewing and convenience. Entry points on port and starboard to the fore deck area. Great natural lighting in galley with windows everywhere to enjoy cooking and the view! Plenty of attractive wood cabinetry crafted in American Tug styling with ample counter space for that great meal while motoring or at anchor.

MAIN STATEROOM

- Spacious walk-around bedding - bow area master stateroom
- Attractive wood finishes - excellent storage options for your loop journey
- Well thought out convenience lighting and outlets
- His and Her closets allow for ample wardrobe changes
- Nicely appointed shower and restroom amenities
- Access to main stateroom through steps leading up to raised pilot house

GUEST QUARTERS

- Single bed on starboard hallway allows for additional capability to include storage
- Attractive wood finishes throughout
- Ample storage below bedding and under integrated night stand
- Cedar lined closet all with high-end marine positive latch systems

ELECTRONICS PACKAGING

All electronics installed the end of 2017

- Raymarine Radar Dome
- Dual Raymarine Axiom Chartplotter Displays
- Raymarine Sea Talk
- Dual Band Wifi router
- TracVision TV3 wireless enabled hub with Direct TV receiver
- GoLight LED remote spotting system - dash and remote activation
- Cockpit camera rear blind spot, swim platform and tender
- Sea Talk I
- Raymarine Smart Controller wireless receiver system
- Axiom Pro and Engine View displays
- Auto Pilot with Evolution compass reading
- Garmin Inteducer on hull
- ACU Course Computer - rudder feedback
- VHF radio with Raymarine AIS 650 transceiver

ENGINE / MECHANICALS

- Cummins 380HP single diesel power plant for maximum range and convenience
- Low hours (400) with correct maintenance performed during her break-in period
- Spacious clean and well lit engine room to handle all maintenance needs with ease
- 400 gallons of diesel will provide outstanding range....
- Fresh water capacity at 120 gallons
- Holding 45
- Entry point in Lazarette area, entry hatch and steps provide for storage and engine room access

DISCLAIMER

The Company offers the details of this vessel in good faith but cannot guarantee or warrant the accuracy of this information nor warrant the condition of the vessel. A buyer should instruct his agents, or his surveyors, to investigate such details as the buyer desires validated. This vessel is

offered subject to prior sale, price change, or withdrawal without notice.

Exclusions

Owner's personal belongings.

Disclaimer

The Company offers the details of this vessel or yacht in good faith but cannot guarantee or warrant the accuracy of this information nor warrant the condition of the vessel. A buyer should instruct his representatives, agents, or his surveyors, to investigate such details as the buyer desires validated. This vessel or yacht is offered subject to prior sale, price change, or withdrawal without notice.

PHOTOS

1



2



3



4



5



6



7



8



9



10



11



12



15



16



17



18



19



20



22



23



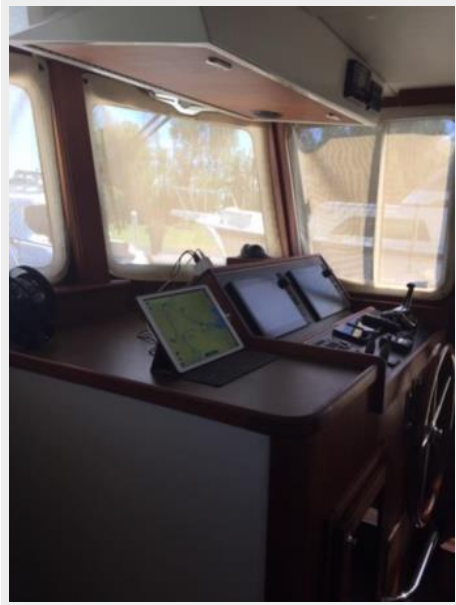
24



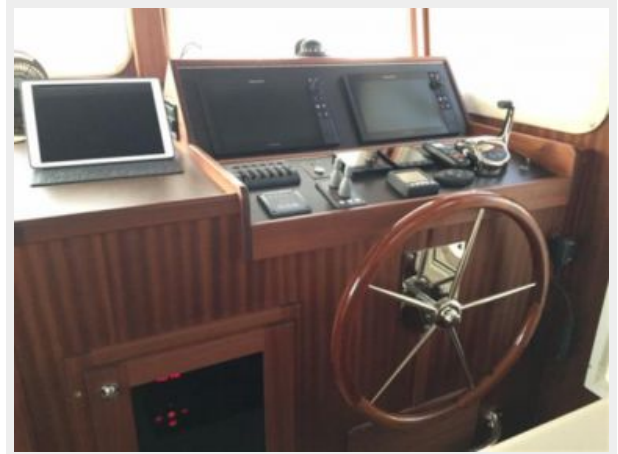
25



26



27



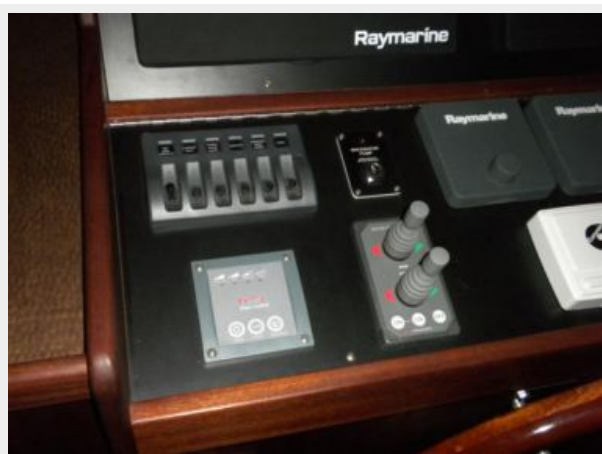
28



29



30



31



32



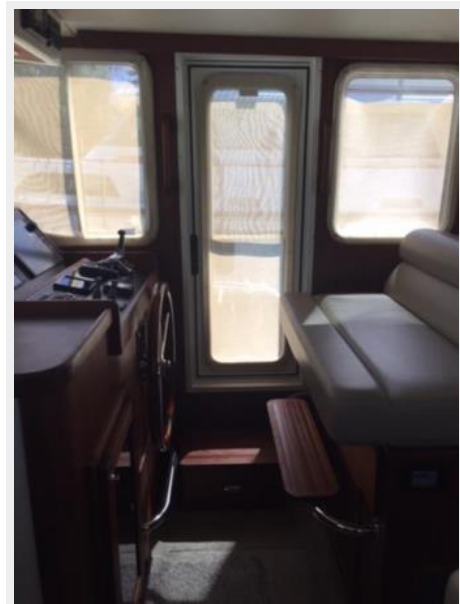
33



35



36



37



38



39



40



41



42



42A



43



44



45



46



47



48



49



50



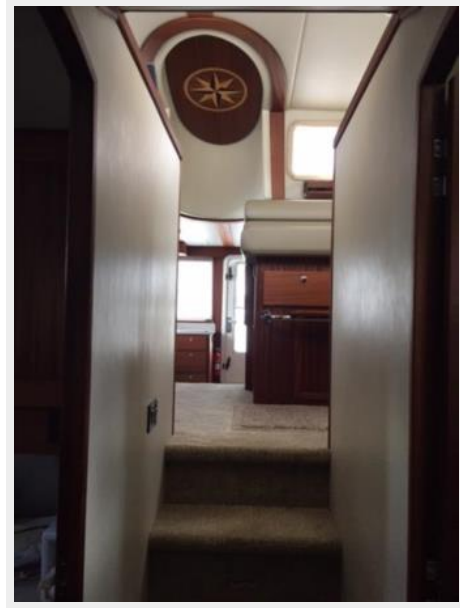
52



53



54



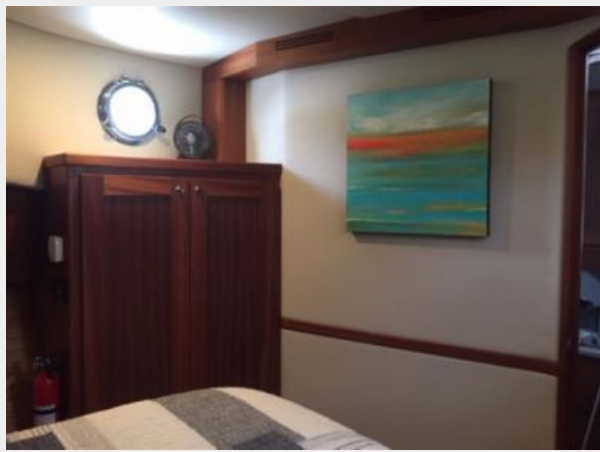
55



56



57



58A



59



60



61



62



62A



62AB



63



64



66



67



69



CONTACTS

Andrey Shestakov, leading yacht broker of the sales department of Shestakov Yacht Sales Inc. Shestakov Yacht Sales Inc., the official representative of the Miami/Fort Lauderdale FL headquarters.

Contact details

Email: andrey@shestakovyachtsales.com

Web: shestakovyachtsales.com/en/

Telephones

USA: +1(954)274-4435

Office hours

Monday – Saturday: **9:00 - 21:00** EDT

Sunday: **closed**

Address



Harbour Towne Marina, 850 NE 3rd St,
STE 213, Dania, FL 33004