

## KATY CORRINE II — AMERICAN TUG



**Судостроитель:** AMERICAN TUG

**Год постройки:** 2018

**Модель:** Траулер

**Цена:** **ЦЕНА ЯХТЫ ПО ЗАПРОСУ**

**Местонахождение:** United States

**Длина общая:** 39' 0" (11.89m)

**Ширина:** 13' 3" (4.04m)

**Макс. осадка:** 3' 5" (1.04m)

**Крейс. скорость:** 8 Kts. (9 MPH)

**Макс. скорость:** 17 Kts. (20 MPH)

Купить **Katy Corrine II — AMERICAN TUG** а также выбрать подходящую вам яхту из нашего каталога яхт вам поможет опытный яхтенный брокер Андрей Шестаков. На сегодняшний день компания **Shestakov Yacht Sales Inc.** имеет большое количество яхт в собственном списке продаж, а также тесно сотрудничает со всеми крупными яхтенными производителями по всему миру.

Для того чтобы купить яхту **Katy Corrine II — AMERICAN TUG** а также проконсультироваться по любому вопросу связанному с покупкой, продажей, чартером яхт позвоните по телефону **+7(918)465-66-44**.

# ОГЛАВЛЕНИЕ

ОГЛАВЛЕНИЕ	2
ХАРАКТЕРИСТИКИ	6
Обзор	6
Основная информация	6
Размеры	6
Скорость, вместимость и масса	6
Размещение	6
Корпус и палуба	7
Информация о двигателе	7
ПОДРОБНОЕ ОПИСАНИЕ	8
MAIN DESCRIPTION	8
WALK-THROUGH AFT DECK	8
SALON/GALLEY	8
MAIN STATEROOM	8
GUEST QUARTERS	9
ELECTRONICS PACKAGING	9
ENGINE / MECHANICALS	9
DISCLAIMER	9
Исключения	10
Отказ от ответственности	10
ФОТОГРАФИИ	11
1	11
2	11
3	11
4	11
5	11
6	11
7	12

8	12
9	12
10	12
11	12
12	12
15	13
16	13
17	13
18	13
19	13
20	13
23	14
22	14
24	14
25	14
26	15
27	15
28	15
29	15
30	15
31	15
32	16
33	16
35	16
36	16
38	17
37	17
39	17
40	17

---

41	18
42	18
42A	18
43	18
44	18
45	18
46	19
47	19
48	19
49	19
50	19
52	19
53	20
54	20
55	20
56	20
58A	21
57	21
60	21
59	21
61	22
62	22
62A	22
62AB	22
63	22
64	22
66	23
67	23
69	23

---

---

КОНТАКТЫ	24
-----	-----
Контактная информация	24
-----	-----
Телефоны	24
-----	-----
Время работы	24
-----	-----
Адрес	24
-----	-----

# ХАРАКТЕРИСТИКИ

## Обзор

39' 2018 American Tug 395 Gorgeous American Tug 395, all of the features of this magnificent tug can be viewed on the factory web site as she is newly spec'd for those looking for additional detail. She is elegantly waiting at a slip in Northport, MI enjoying her journey into our Region. Excellent fuel economy with a very stylish, well appointed tug/trawler furnishings. Several upgrades to include electronic packaging and tender are included in this solid offer. A 2018 will provide many years of nearly maintenance free cruising should you decide to do the Great Loop in style and comfort!

## Основная информация

Тип судна: Траулер	Модельный год: 2018
Год постройки: 2018	Страна: United States

## Размеры

Длина общая: 39' 0" (11.89m)	Ширина: 13' 3" (4.04m)
Макс. осадка: 3' 5" (1.04m)	Трапы: 14' 7" (4.44m)

## Скорость, вместимость и масса

Крейс. скорость: 8 Kts. (9 MPH)	Макс. скорость: 17 Kts. (20 MPH)
Водоизмещение: 25000 Pounds	Вместимость воды: 120 Gallons
Вместимость сточного бака: 45 Gallons	Объем топливного бака: 400 Gallons

## Размещение

Всего кают: 1

---

## Корпус и палуба

---

**Материал корпуса:** Fiberglass

---

## Информация о двигателе

---

**Двигатели:** 1

**Производитель:** Cummins

**Модель:** QSB 380

**Тип двигателя:** Inboard

**Тип топлива:** Diesel

---

# ПОДРОБНОЕ ОПИСАНИЕ

---

## MAIN DESCRIPTION

---

**39' 2018 American Tug 395 Gorgeous American Tug 395, all of the features of this magnificent tug can be viewed on the factory web site as she is newly spec'd for those looking for additional detail. She is elegantly waiting at a slip in Northport, MI enjoying her journey into our Region. Excellent fuel economy with a very stylish, well appointed tug/trawler furnishings. Several upgrades to include electronic packaging and tender are included in this solid offer. A 2018 will provide many years of nearly maintenance free cruising should you decide to do the Great Loop in style and comfort!**

## WALK-THROUGH AFT DECK

---

Pristine American Tug 395, shows as new model. Well cared for late model 395. Tender housed conveniently on swim platform with easy load and unloading. Easy access to salon/galley area or to the large sun deck above via ladder. Entry to bow is best through either doorway from the lower helm station area. Wide deck path with high railings make for easy transition to lines or bow.

## SALON/GALLEY

---

Nicely appointed salon and galley area all with high-end furnishings make for convenient and attractive seating or meal preparation in spacious galley area. Tasteful wood trim accent the attractive American Tug standards which are simply the finest. Thoughtful placement of electronics and elevated pilot house with plenty of high grade windows for unlimited viewing and convenience. Entry points on port and starboard to the fore deck area. Great natural lighting in galley with windows everywhere to enjoy cooking and the view! Plenty of attractive wood cabinetry crafted in American Tug styling with ample counter space for that great meal while motoring or at anchor.

## MAIN STATEROOM

---

- Spacious walk-around bedding - bow area master stateroom
- Attractive wood finishes - excellent storage options for your loop journey
- Well thought out convenience lighting and outlets
- His and Her closets allow for ample wardrobe changes
- Nicely appointed shower and restroom amenities
- Access to main stateroom through steps leading up to raised pilot house



---

## GUEST QUARTERS

---

- Single bed on starboard hallway allows for additional capability to include storage
- Attractive wood finishes throughout
- Ample storage below bedding and under integrated night stand
- Cedar lined closet all with high-end marine positive latch systems

---

## ELECTRONICS PACKAGING

---

All electronics installed the end of 2017

- Raymarine Radar Dome
- Dual Raymarine Axiom Chartplotter Displays
- Raymarine Sea Talk
- Dual Band Wifi router
- TracVision TV3 wireless enabled hub with Direct TV receiver
- GoLight LED remote spotting system - dash and remote activation
- Cockpit camera rear blind spot, swim platform and tender
- Sea Talk I
- Raymarine Smart Controller wireless receiver system
- Axiom Pro and Engine View displays
- Auto Pilot with Evolution compass reading
- Garmin Inteducer on hull
- ACU Course Computer - rudder feedback
- VHF radio with Raymarine AIS 650 transceiver

---

## ENGINE / MECHANICALS

---

- Cummins 380HP single diesel power plant for maximum range and convenience
- Low hours (400) with correct maintenance performed during her break-in period
- Spacious clean and well lit engine room to handle all maintenance needs with ease
- 400 gallons of diesel will provide outstanding range....
- Fresh water capacity at 120 gallons
- Holding 45
- Entry point in Lazarette area, entry hatch and steps provide for storage and engine room access

---

## DISCLAIMER

---

The Company offers the details of this vessel in good faith but cannot guarantee or warrant the accuracy of this information nor warrant the condition of the vessel. A buyer should instruct his agents, or his surveyors, to investigate such details as the buyer desires validated. This vessel is

offered subject to prior sale, price change, or withdrawal without notice.

## Исключения

---

При продаже яхты исключаются личные вещи владельца.

## Отказ от ответственности

---

Компания предоставляет описание судна или яхты добросовестно, но не может гарантировать точность этой информации, а также не ручается за техническое состояние. Покупатель должен проинструктировать своих агентов или оценщиков исследовать представленную информацию более подробно, по собственному желанию. Продажа судна или яхты, изменение цены или снятие с продажи будет происходить без предварительного уведомления.

# ФОТОГРАФИИ

1



2



3



4



5



6



7



8



9



10



11



12



15



16



17



18



19



20



22



23



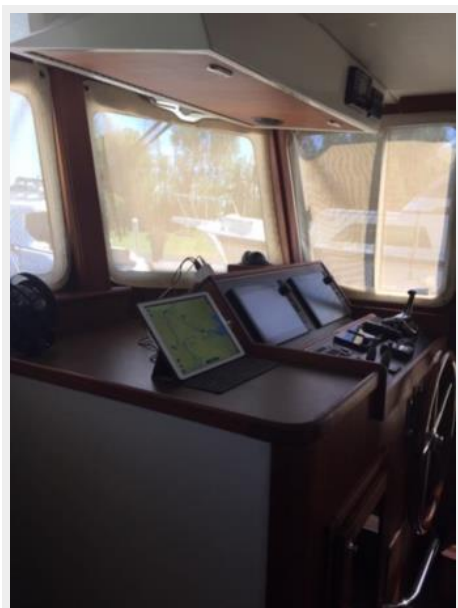
24



25



26



27



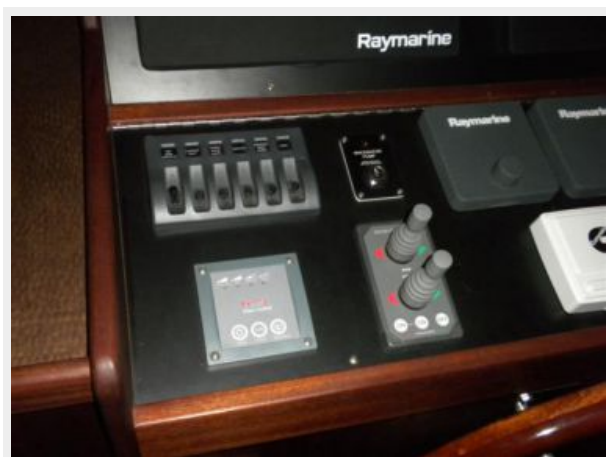
28



29



30



31



32



33



35



36





37



38



39



40



41



42



42A



43



44



45



46



47



48



49



50



52



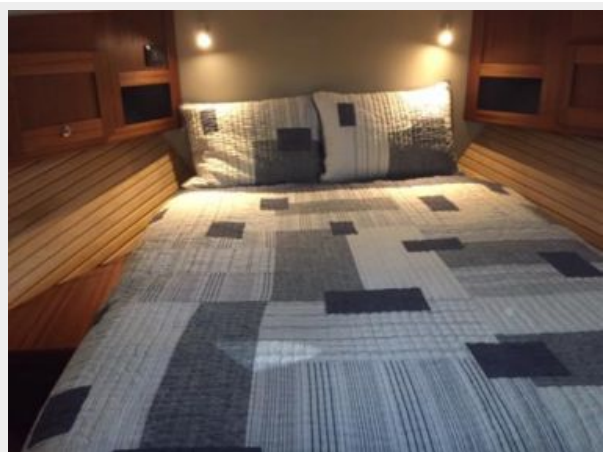
53



54



55



56



57



58A



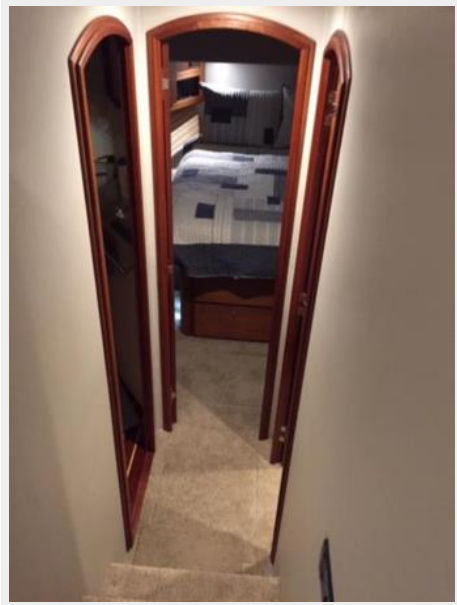
59



60



61



62



62A



62AB



63



64



66



67



69



# КОНТАКТЫ

---

Андрей Шестаков (Andrey Shestakov) – ведущий яхтенный брокер отдела продаж яхт и судов компании Shestakov Yacht Sales Inc. Официальный представитель Shestakov Yacht Sales Inc. для русскоговорящих клиентов в центральном офисе компании в Майами/Форт Лодердейл/Флорида/США.

## Контактная информация

---

Email: [andrey@shestakovyachtsales.com](mailto:andrey@shestakovyachtsales.com)

Web: [shestakovyachtsales.com](http://shestakovyachtsales.com)

## Телефоны

---

Краснодарский край: **+7(918)465-66-44**

США, Майами, Флорида: **+1(954)274-4435**

## Время работы

---

Понедельник – Суббота: **9:00 - 21:00**  
EDT

Воскресенье: **Закрито**

## Адрес

---



Harbour Towne Marina, 850 NE 3rd St,  
STE 213, Dania, FL 33004