

2020 DUFOUR 390 — DUFOUR



Builder: DUFOUR

LOA: 36' 11" (11.25m)

Year Built: 2020

Beam: 12' 8" (3.86m)

Model: Performance Sailboat

Max Draft: 6' 3" (1.91m)

Price: PRICE ON APPLICATION

Location: United States

Our experienced yacht broker, Andrey Shestakov, will help you choose and buy a yacht that best suits your needs 2020 Dufour 390 — DUFOUR from our catalogue. Presently, at Shestakov Yacht Sales Inc., we have a wide variety of yachts available on our sale's list. We also work in close contact with all the big yacht manufacturers from all over the world.

If you would like to buy a yacht 2020 Dufour 390 — DUFOUR or would like help answering any questions concerning purchasing, selling or chartering a yacht, please call +1(954)274-4435

TABLE OF CONTENTS

TABLE OF CONTENTS	2
SPECIFICATIONS	4
Overview	4
Basic Information	4
Dimensions	4
Speed, Capacities and Weight	5
Accommodations	5
Hull and Deck Information	5
Engine Information	5
DETAILED INFORMATION	6
Overview	6
Exclusions	10
Disclaimer	10
PHOTOS	11
2	11
3	11
4	11
5	11
6	11
7	11
8	12
9	12
10	12
11	12
12	13
13	13
14	13
15	13

16	13
17	13
18	14
19	14
20	14
CONTACTS	15
Contact details	15
Telephones	15
Office hours	15
Address	15

SPECIFICATIONS

Overview

Fast boat with freight/commissioning/delivery to Northeast Coast "Sailaway Price" **STEERING SENSATIONS** The new generation of Dufour sailboats promises to bring you thrills. In line with our expertise, we have developed a high-performance, balanced hull for maximum control and incomparable steering finesse. Unrivaled seafaring qualities without compromising on ease of movement or mooring comfort. The meticulous layout of deck spaces, the immense rear transom, the many sunbathing areas and the famous outdoor galley with griddle and sink will ensure wonderful moments of togetherness on board. The Dufour 390 hull sports softened and elevated rear bilge and a slightly rounded stem. This design boosts stability and increases interior volume for the perfect compromise between performance, ease of maneuvering and comfort. The Dufour 390 is available in three layouts: L-shaped galley with two or three cabins and two bathrooms or, exclusively, a long galley with three-cabins and three bathrooms. The large deck hatches and many portholes ensure each room on the boat is bathed in light. Ventilation is optimized with many carefully positioned openings.

Basic Information

Category: Performance Sailboat

Sub Category: Cruising Sailboat

Model Year: 2020

Year Built: 2020

Country: United States

Dimensions

LOA: 36' 11" (11.25m)

LWL: 32' 6" (9.91m)

Beam: 12' 8" (3.86m)

Max Draft: 6' 3" (1.91m)

MFG Length: 32' 0" (9.75m)

Speed, Capacities and Weight

Displacement: 15564 Pounds

Water Capacity: 100 Gallons

Fuel Capacity: 52 Gallons

Accommodations

Total Heads: 3

Hull and Deck Information

Hull Material: Fiberglass

Engine Information

Engines: 1

Manufacturer: Unknown

Engine Type: Sail Drive

Fuel Type: Diesel

DETAILED INFORMATION

Overview

Accommodations

Forward Cabin

- Berth: 200 × 140 cm approx.
- Mattress: 10 cm thick foam mattress with washable cover.
- Storage
 - - Below berth.
- Cubby-hole along side of hull.
- Hanging locker with shelves
- Shoe locker in podium
 - Water tank: Below berth
 - Access: To navigation instrument transducers

Aft Head

- WC: Manual sea toilet
- Wash-basin: Wash-basin unit with basin in polyester.
- Water: Hot and cold water, chrome-plated brass single-lever mixer tap and shower head.
- Drain: Direct, via an electric pump.
- Cupboards: 1 high-level 1-door storage unit with mirror
- Mirror: Large mirror
- Ventilation: Via port-hole.
- Other: Toilet roll holder.

Saloon

- Saloon banquette: U-shaped banquette on port or starboard side depending of version.
- Central banquette: Sliding (option)
- Table: With flaps
- Storage depending on version
- Mast foot: Stainless

Aft Cabin

- Berth: 194 × 140 cm approx.
- Mattress: 10 cm thick foam mattress with washable cover.
- Fuel tank: Beneath berth, starboard side.
- Water tank: Beneath berth, port side.
- Storage:
 - Storage at base of hanging locker with hinged lid
 - Double hanging locker with shelf and rail for coat hangers
 - Cubby-hole along hull liner with fiddle.
- Steering gear access: Hinged removable cover in Moabi
- Soundproofing: Double bulkhead provides acoustic and thermal insulation from adjoining engine compartment.

Galley

- Configurations: Longitudinal or L-shape, depending on version
- Worktop: 'Corian®' synthetic resin with wooden fiddle.
- Sink: Stainless, twin bowls with GCorian®C synthetic resin covers, one of which can be used as a chopping board
- Water: Hot and cold pumped water with chrome-plated brass single-lever mixer tap.
- Gas cooker: 2-burner cooker with oven on gimbals, and removable folding protective cover in 'Corian®'
- Crockery storage: Dowels to retain crockery when heeling.
- Refrigerators: 12 V electric refrigerator
- Storage depending on version
- Waste bin: Sort compartments

Cockpit

- Lockers: 2 large side lockers, lids fitted with gas struts and fixings for padlocks.
- Helm: Wheel
- Helm console: Polyester.
- Engine control: Engine controls and control panel at helm position.
- Compasses: 2 on columns
- Instrumentation: At helm position (port and starboard)
- Gas locker: Port aft locker
- Stern door: Swings up, with built-in telescopic stainless bathing ladder
- BIB locker: Life raft stows in dedicated locker fitted with ram below stern door.
- Shower: Cold water
- Shore supply : Watertight socket in cockpit
- Bathing ladder: Telescopic stainless bathing ladder
- Cockpit floor: Non-slip polyester cockpit floor.
- Emergency tiller: Head of rudder stock beneath helmsman's floor for fitting the emergency tiller

Construction

- Hull: Hand-laminated in polyester/glassfibre.
- Decoration: Decorative stripes on the hull.
- Gelcoat: NPG gelcoat with first mat impregnated with NPG resin forming an optimum barrier against osmosis.
- Structure: Hull bottom counter-moulded, floors laminated into the hull.
- Deck: Sandwich with injected PVC foam core
- Ballast: Keel bolts bear on stainless back-plates
- Rudder: Semi-elliptical shape, filled with closed-cell epoxy foam.
- Stock Solid stainless steel.
- Non-slip deck surface: Non-slip structured deck surface.

Deck

- Hand rails: Solid wood handrails on coachroof.
- Fixed toe rails: 2, wooden
- Anchor locker: Moulded into the deck, self-draining with built-in windlass support and anchor chain eyebolt, lockable hatch cover.

- Bow pulpits Port + Starboard
- Stern pulpit: Lifebuoy bracket, jackstaff bracket and opening lifelines with hook
- Stanchions: 8 with 2 rows of life-lines.
- Other: Solid wooden toe-rail.
- Shroud chain-plates: Single chainplate for cap shrouds and lower shrouds.
- Safety chainplates: Safety harness chainplates in cockpit floor
- Chainplates: 2 backstay chainplates
- Midships mooring cleats: 2, aluminium
- Mooring cleats: 4, aluminium.
- Rubbing strips: 6 stainless, on hull sheerline
- Fuel deck fillers: 1
- Water deck fillers: 2
- Chainplate on roof for Mainsail sheet
- Self tacking jib track with car.
- Through-deck fitting: Stainless swan-neck for electrical and electronic cables.
- Deck organizers: 2 deck organizers, 4-sheave (starboard) and 5-sheave (port) for halyard, sheet, and reef line returns.
- Halyard winches: 2 halyard winches
- Jamcleats: 2 rows of jamcleats port / starboard level with the companionway
- Furler line jamcleats: 1 at aft end of sidedeck
- Polyester slidin hatch cover.

Engines

- Engine power: 30 hp (22 kW)
- Transmission: Sail-drive
- Cooling system: Heat exchanger, anti-siphon valve.
- Fuel tank: Gauge on electrical distribution panel.
- Fuel filter: Fuel filter with water separator.
- Shut-off valve: Emergency fuel shut-off valve.
- Control panel: Control panel close to helmsman, with hour meter and tachometer.
- Alternator: Alternator with battery isolator.
- Ventilation: Ventilation with 2 natural inlets and electric mechanical extract.
- Bilge: Separate engine bilge.
- Access: Access to the engine from front and both sides, depending on version.
- Propeller: Twin blade, fixed.
- Insulation: Carefully-designed foam acoustic and thermal insulation.

Rigging and Sails

- Mast: Anodized aluminium with 2 levels of swept spreaders
- Rigging: 9/10 fractional
- Mast stepping: On deck
- Lights: Navigation, anchor and masthead lights.
- Topping lift: Boom topping lift cleat
- Boom: Anodized aluminium fitted with 2 continuous reefers.
- Furler: Genoa roller furler.
- Standing rigging: Continuous in stainless single-strand cable, chrome-plated bronze rigging screws, comprising: forestay, twin backstay, inter. and lower shrouds.
- Running rigging: Running rigging in pre-stretched textile including: main and genoa halyards, boom topping lift, main and jib sheets, 2 continuous reef lines, leech tensioner, furling line, downhaul tackle.
- Mainsail: 2 wide reef strips, with battens and bag.
- Genoa: Furling genoa with UV-protection.

Exclusions

Owner's personal belongings.

Disclaimer

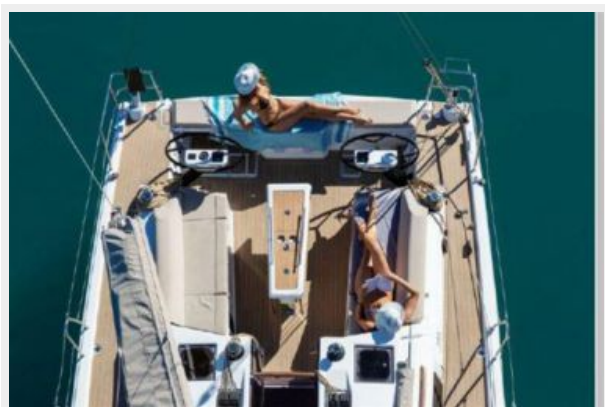
The Company offers the details of this vessel or yacht in good faith but cannot guarantee or warrant the accuracy of this information nor warrant the condition of the vessel. A buyer should instruct his representatives, agents, or his surveyors, to investigate such details as the buyer desires validated. This vessel or yacht is offered subject to prior sale, price change, or withdrawal without notice.

PHOTOS

2



3



4



5



6



7



8



9



10



11



12



13



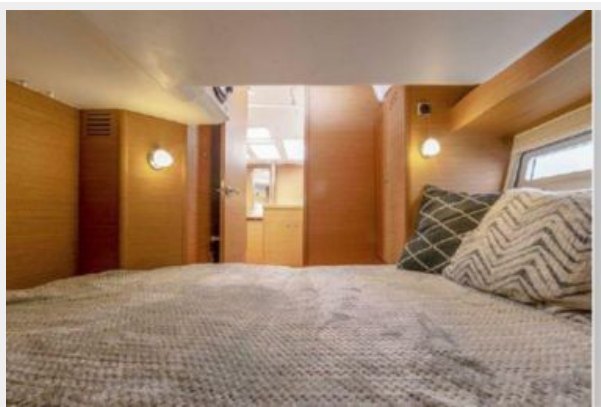
14



15



16



17



18



19



20



CONTACTS

Andrey Shestakov, leading yacht broker of the sales department of Shestakov Yacht Sales Inc. Shestakov Yacht Sales Inc., the official representative of the Miami/Fort Lauderdale FL headquarters.

Contact details

Email: **andrey@shestakovyachtsales.com**

Web: shestakovyachtsales.com/en/

Telephones

USA: **+1(954)274-4435**

Office hours

Monday – Saturday: **9:00 - 21:00 EDT**

Sunday: **closed**

Address



Harbour Towne Marina, 850 NE 3rd St,
STE 213, Dania, FL 33004