

2020 DUFOUR 390 — DUFOUR



Судостроитель: DUFOUR

Год постройки: 2020

Модель: Представительская парусная яхта

Цена: **ЦЕНА ЯХТЫ ПО ЗАПРОСУ**

Местонахождение: United States

Длина общая: 36' 11" (11.25m)

Ширина: 12' 8" (3.86m)

Макс. осадка: 6' 3" (1.91m)

Купить 2020 Dufour 390 — DUFOUR а также выбрать подходящую вам яхту из нашего каталога яхт вам поможет опытный яхтенный брокер Андрей Шестаков. На сегодняшний день компания Shestakov Yacht Sales Inc. имеет большое количество яхт в собственном списке продаж, а также тесно сотрудничает со всеми крупными яхтенными производителями по всему миру.

Для того чтобы купить яхту 2020 Dufour 390 — DUFOUR а также проконсультироваться по любому вопросу связанному с покупкой, продажей, чартером яхт позвоните по телефону **+7(918)465-66-44**.

ОГЛАВЛЕНИЕ

ОГЛАВЛЕНИЕ	2
ХАРАКТЕРИСТИКИ	4
Обзор	4
Основная информация	4
Размеры	4
Скорость, вместимость и масса	5
Размещение	5
Корпус и палуба	5
Информация о двигателе	5
ПОДРОБНОЕ ОПИСАНИЕ	6
Overview	6
Исключения	10
Отказ от ответственности	10
ФОТОГРАФИИ	11
2	11
3	11
4	11
5	11
6	11
7	11
8	12
9	12
10	12
11	12
12	13
13	13
14	13
15	13

16	13
17	13
18	14
19	14
20	14
КОНТАКТЫ	15
Контактная информация	15
Телефоны	15
Время работы	15
Адрес	15

ХАРАКТЕРИСТИКИ

Обзор

Fast boat with freight/commissioning/delivery to Northeast Coast "Sailaway Price" **STEERING SENSATIONS** The new generation of Dufour sailboats promises to bring you thrills. In line with our expertise, we have developed a high-performance, balanced hull for maximum control and incomparable steering finesse. Unrivaled seafaring qualities without compromising on ease of movement or mooring comfort. The meticulous layout of deck spaces, the immense rear transom, the many sunbathing areas and the famous outdoor galley with griddle and sink will ensure wonderful moments of togetherness on board. The Dufour 390 hull sports softened and elevated rear bilge and a slightly rounded stem. This design boosts stability and increases interior volume for the perfect compromise between performance, ease of maneuvering and comfort. The Dufour 390 is available in three layouts: L-shaped galley with two or three cabins and two bathrooms or, exclusively, a long galley with three-cabins and three bathrooms. The large deck hatches and many portholes ensure each room on the boat is bathed in light. Ventilation is optimized with many carefully positioned openings.

Основная информация

Тип судна: Представительская парусная яхта **Подкатегория:** Крейсерская яхта

Модельный год: 2020

Год постройки: 2020

Страна: United States

Размеры

Длина общая: 36' 11" (11.25m)

Длина по ватерлинии: 32' 6" (9.91m)

Ширина: 12' 8" (3.86m)

Макс. осадка: 6' 3" (1.91m)

Длина привального бруса: 32' 0" (9.75m)

Скорость, вместимость и масса

Водоизмещение: 15564 Pounds

Вместимость воды: 100 Gallons

Объем топливного бака: 52 Gallons

Размещение

Всего ком. состава: 3

Корпус и палуба

Материал корпуса: Fiberglass

Информация о двигателе

Двигатели: 1

Производитель: Unknown

Тип двигателя: Sail Drive

Тип топлива: Diesel

ПОДРОБНОЕ ОПИСАНИЕ

Overview

Accommodations

Forward Cabin

- Berth: 200 × 140 cm approx.
- Mattress: 10 cm thick foam mattress with washable cover.
- Storage
 - - Below berth.

- Cubby-hole along side of hull.

- Hanging locker with shelves

- Shoe locker in podium

- Water tank: Below berth
- Access: To navigation instrument transducers

Aft Head

- WC: Manual sea toilet
- Wash-basin: Wash-basin unit with basin in polyester.
- Water: Hot and cold water, chrome-plated brass single-lever mixer tap and shower head.
- Drain: Direct, via an electric pump.
- Cupboards: 1 high-level 1-door storage unit with mirror
- Mirror: Large mirror
- Ventilation: Via port-hole.
- Other: Toilet roll holder.

Saloon

- Saloon banquette: U-shaped banquette on port or starboard side depending of version.
- Central banquette: Sliding (option)
- Table: With flaps
- Storage depending on version
- Mast foot: Stainless

Aft Cabin

- Berth: 194 × 140 cm approx.
- Mattress: 10 cm thick foam mattress with washable cover.
- Fuel tank: Beneath berth, starboard side.
- Water tank: Beneath berth, port side.
- Storage:
 - Storage at base of hanging locker with hinged lid
 - Double hanging locker with shelf and rail for coat hangers
 - Cubby-hole along hull liner with fiddle.
 - Steering gear access: Hinged removable cover in Moabi
 - Soundproofing: Double bulkhead provides acoustic and thermal insulation from adjoining engine compartment.

Galley

- Configurations: Longitudinal or L-shape, depending on version
- Worktop: 'Corian®' synthetic resin with wooden fiddle.
- Sink: Stainless, twin bowls with GCorian®C synthetic resin covers, one of which can be used as a chopping board
- Water: Hot and cold pumped water with chrome-plated brass single-lever mixer tap.
- Gas cooker: 2-burner cooker with oven on gimbals, and removable folding protective cover in 'Corian®'
- Crockery storage: Dowels to retain crockery when heeling.
- Refrigerators: 12 V electric refrigerator
- Storage depending on version
- Waste bin: Sort compartments

Cockpit

- Lockers: 2 large side lockers, lids fitted with gas struts and fixings for padlocks.
- Helm: Wheel
- Helm console: Polyester.
- Engine control: Engine controls and control panel at helm position.
- Compasses: 2 on columns
- Instrumentation: At helm position (port and starboard)
- Gas locker: Port aft locker
- Stern door: Swings up, with built-in telescopic stainless bathing ladder
- BIB locker: Life raft stows in dedicated locker fitted with ram below stern door.
- Shower: Cold water
- Shore supply : Watertight socket in cockpit
- Bathing ladder: Telescopic stainless bathing ladder
- Cockpit floor: Non-slip polyester cockpit floor.
- Emergency tiller: Head of rudder stock beneath helmsman's floor for fitting the emergency tiller

Construction

- Hull: Hand-laminated in polyester/glassfibre.
- Decoration: Decorative stripes on the hull.
- Gelcoat: NPG gelcoat with first mat impregnated with NPG resin forming an optimum barrier against osmosis.
- Structure: Hull bottom counter-moulded, floors laminated into the hull.
- Deck: Sandwich with injected PVC foam core
- Ballast: Keel bolts bear on stainless back-plates
- Rudder: Semi-elliptical shape, filled with closed-cell epoxy foam.
- Stock Solid stainless steel.
- Non-slip deck surface: Non-slip structured deck surface.

Deck

- Hand rails: Solid wood handrails on coachroof.
- Fixed toe rails: 2, wooden
- Anchor locker: Moulded into the deck, self-draining with built-in windlass support and anchor chain eyebolt, lockable hatch cover.

- Bow pulpits Port + Starboard
- Stern pulpit: Lifebuoy bracket, jackstaff bracket and opening lifelines with hook
- Stanchions: 8 with 2 rows of life-lines.
- Other: Solid wooden toe-rail.
- Shroud chain-plates: Single chainplate for cap shrouds and lower shrouds.
- Safety chainplates: Safety harness chainplates in cockpit floor
- Chainplates: 2 backstay chainplates
- Midships mooring cleats: 2, aluminium
- Mooring cleats: 4, aluminium.
- Rubbing strips: 6 stainless, on hull sheerline
- Fuel deck fillers: 1
- Water deck fillers: 2
- Chainplate on roof for Mainsail sheet
- Self tacking jib track with car.
- Through-deck fitting: Stainless swan-neck for electrical and electronic cables.
- Deck organizers: 2 deck organizers, 4-sheave (starboard) and 5-sheave (port) for halyard, sheet, and reef line returns.
- Halyard winches: 2 halyard winches
- Jamcleats: 2 rows of jamcleats port / starboard level with the companionway
- Furler line jamcleats: 1 at aft end of sidedeck
- Polyester slidin hatch cover.

Engines

- Engine power: 30 hp (22 kW)
- Transmission: Sail-drive
- Cooling system: Heat exchanger, anti-siphon valve.
- Fuel tank: Gauge on electrical distribution panel.
- Fuel filter: Fuel filter with water separator.
- Shut-off valve: Emergency fuel shut-off valve.
- Control panel: Control panel close to helmsman, with hour meter and tachometer.
- Alternator: Alternator with battery isolator.
- Ventilation: Ventilation with 2 natural inlets and electric mechanical extract.
- Bilge: Separate engine bilge.
- Access: Access to the engine from front and both sides, depending on version.
- Propeller: Twin blade, fixed.
- Insulation: Carefully-designed foam acoustic and thermal insulation.

Rigging and Sails

- Mast: Anodized aluminium with 2 levels of swept spreaders
- Rigging: 9/10 fractional
- Mast stepping: On deck
- Lights: Navigation, anchor and masthead lights.
- Topping lift: Boom topping lift cleat
- Boom: Anodized aluminium fitted with 2 continuous reefers.
- Furler: Genoa roller furler.
- Standing rigging: Continuous in stainless single-strand cable, chrome-plated bronze rigging screws, comprising: forestay, twin backstay, inter. and lower shrouds.
- Running rigging: Running rigging in pre-stretched textile including: main and genoa halyards, boom topping lift, main and jib sheets, 2 continuous reef lines, leech tensioner, furling line, downhaul tackle.
- Mainsail: 2 wide reef strips, with battens and bag.
- Genoa: Furling genoa with UV-protection.

Исключения

При продаже яхты исключаются личные вещи владельца.

Отказ от ответственности

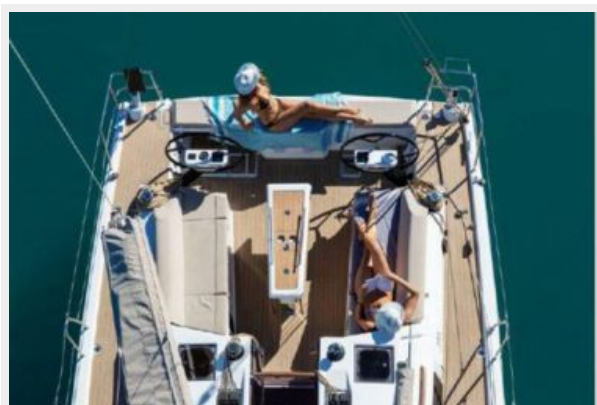
Компания предоставляет описание судна или яхты добросовестно, но не может гарантировать точность этой информации, а также не ручается за техническое состояние. Покупатель должен проинструктировать своих агентов или оценщиков исследовать представленную информацию более подробно, по собственному желанию. Продажа судна или яхты, изменение цены или снятие с продажи будет происходить без предварительного уведомления.

ФОТОГРАФИИ

2



3



4



5



6



7



8



9



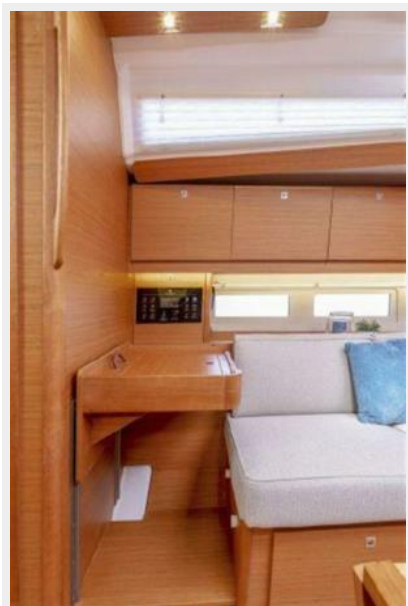
10



11



12



13



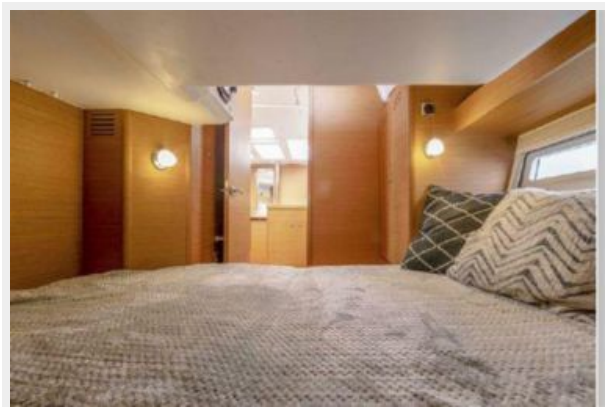
14



15



16



17



18



19



20



КОНТАКТЫ

Андрей Шестаков (Andrey Shestakov) – ведущий яхтенный брокер отдела продаж яхт и судов компании Shestakov Yacht Sales Inc. Официальный представитель Shestakov Yacht Sales Inc. для русскоговорящих клиентов в центральном офисе компании в Майами/Форт Лодердейл/Флорида/США.

Контактная информация

Email: andrey@shestakovyachtsales.com

Web: shestakovyachtsales.com

Телефоны

Краснодарский край: **+7(918)465-66-44**

США, Майами, Флорида: **+1(954)274-4435**

Время работы

Понедельник – Суббота: **9:00 - 21:00**
EDT

Воскресенье: **Закрито**

Адрес



Harbour Towne Marina, 850 NE 3rd St,
STE 213, Dania, FL 33004