

## 2013 HUNTER E36 — HUNTER



**Builder:** HUNTER

**Year Built:** 2013

**Model:** Cruising Sailboat

**Price:** PRICE ON APPLICATION

**Location:** United States

**LOA:** 35' 6" (10.82m)

**Beam:** 12' 4" (3.76m)

**Min Draft:** 5' 0" (1.52m)

Our experienced yacht broker, Andrey Shestakov, will help you choose and buy a yacht that best suits your needs 2013 Hunter e36 — HUNTER from our catalogue. Presently, at Shestakov Yacht Sales Inc., we have a wide variety of yachts available on our sale's list. We also work in close contact with all the big yacht manufacturers from all over the world.

If you would like to buy a yacht 2013 Hunter e36 — HUNTER or would like help answering any questions concerning purchasing, selling or chartering a yacht, please call +1(954)274-4435

# TABLE OF CONTENTS

TABLE OF CONTENTS	2
SPECIFICATIONS	4
Overview	4
Basic Information	4
Dimensions	4
Speed, Capacities and Weight	5
Accommodations	5
Hull and Deck Information	5
Engine Information	5
DETAILED INFORMATION	6
Overview	6
Exclusions	12
Disclaimer	12
PHOTOS	13
3	13
2	13
4	13
5	13
6	14
7	14
8	14
9	14
10	15
11	15
12	15
13	15
14	16
15	16

---

16	16
17	16
18	16
19	16
20	17
21	17
22	17
23	17
24	18
25	18
26	18
27	18
CONTACTS	19
Contact details	19
Telephones	19
Office hours	19
Address	19

---

# SPECIFICATIONS

## Overview

This is a newer generation Hunter with very sleek modern styling and a fabulous midnight blue hull color. Red at Night sails very well and has all the amenities you would want. She has been very lightly used, never left Boston harbor until delivery to Newburyport to sell her. Microwave oven has never been used. Used the stove once to heat water, used oven once. The original propane tanks with the original supply of gas are still there. The boat has been dry-docked every winter. No one has ever slept in the beds. Hunters were acknowledged as the most innovative builder of production sailboats. Hunters are fast cruising boats that are easy to sail. Their modern design features and high quality construction make sailing safe and comfortable for the whole family. Leading up to 2013 when this boat was built Hunter was the largest sailboat manufacturer in North America. The e36 had a slew of innovative features: new sleek styling, hull design advancements—more pronounced bow hollow and beamier aft; a new larger fold down transom/swim platform; a much bigger extended cockpit, flush mount deck hatches and best of all the new double ended mainsheet which enables all sail trimming from the helm! Down below the extended interior allows for a much larger aft cabin with more headroom; and Hunter's popular hardwood floor. Red at Night has been meticulously maintained and has extremely low/engine hours. She will show particularly well. Let us schedule a showing for you. Note: All brokerage boats are sold "as is" with no warranty expressed or implied by agent. Any representation of vessel is that of the seller.

## Basic Information

**Category:** Cruising Sailboat

**Model Year:** 2013

**Year Built:** 2013

**Country:** United States

## Dimensions

**LOA:** 35' 6" (10.82m)

**LWL:** 31' 1" (9.47m)

**Beam:** 12' 4" (3.76m)

**Min Draft:** 5' 0" (1.52m)

**Clearance:** 55' 3" (16.84m)

**MFG Length:** 36' 0" (10.97m)

---

## Speed, Capacities and Weight

---

**Displacement:** 15328 Pounds

**Water Capacity:** 75 Gallons

**Holding Tank:** 30 Gallons

**Fuel Capacity:** 38 Gallons

---

## Accommodations

---

**Total Cabins:** 2

**Total Berths:** 3

**Total Heads:** 1

---

## Hull and Deck Information

---

**Hull Material:** Fiberglass

---

## Engine Information

---

**Engines:** 1

**Manufacturer:** Yanmar

**Engine Type:** Inboard

**Fuel Type:** Diesel

---

# DETAILED INFORMATION

---

## Overview

---

### Accommodations Forward and Aft Cabin

#### FORWARD CABIN

- Cabin Lighting
- Deck Hatch, Opening
- Electrical Outlets, AC and DC
- Hanging Lockers, (2) Cedar-Lined
- Mattress, Foam (never been slept in)
- Smoke and Carbon Monoxide Detectors
- Storage Shelving
- Under-Berth Storage Space

#### AFT CABIN

- Berth, Double w/Foam Mattress (never been slept in)
- Cabin Lighting
- Designer Bedding Fabrics
- Hanging Locker, Cedar-Lined
- Electrical Outlets, AC and DC
- Storage Shelves and Compartment Storage Space

- Ports/Hatches, Opening w/Screens

## Galley

- Electrical Outlets, AC & DC
- Waste Bin, Built-In
- Corian® Countertop
- Dish Rack Cabinet w/Lighting and Ventilation
- Dishware, Plates, Mugs Bowls, (4) Sets
- Fresh Water System, Pressurized, Hot and Cold
- In-Counter Storage Bin
  - Refrigerator
- Sinks, Double Stainless Steel w/Cutting Board
- Storage Cabinets
- Storage Drawers
- Storage Shelving
- Stove, Two Burner, LPG (only used once)

Microwave (only used once)

## MAIN SALON/CABIN

- Accord Shades
- Cabin Lighting
- Chart Table
- Deck Flush-Mount Hatch, Opening w/Screen
- Deck Side Windows, Fixed w/Shades

- 
- Deck Windshield Ports, Fixed w/Covers
  - Deluxe Cushion/Fabric Package
  - Dinette Table Convertible to Berth
  - Dorade Vent
  - Electrical Outlets, AC & DC
  - Hardwood Flooring
  - Gloss Finish "Cherry" Woodwork
  - Handrails, Hardwood on Both Sides
  - Head Compartment, Enclosed with Vanity and Shower
  - Hull Side Storage Cabinets
  - Navigation Station w/Space for Electronics
  - Selected Hardwood Trim

## COCKPIT

- Steering Console w/Single Lever Engine Control, Wheel Brake,  
Lighted Compass, Space for Instruments, & Stainless Steel Wheel Guard
- Bilge Pump, Manual
- Cockpit Traveller Arch, Stainless Steel w/Mainsheet
- Large Cockpit Table
- Halyard Tail Stowage Wells
- Helm Seat, Hinging
- Jib Winches Placed Aft at Helm Station
- Lewmar® Cable Drive Steering Mechanism
- Lockers, (3) Storage
- Stern Rail Seats, Stainless Steel, w/Drink Holders



- Transom Shower, Hot & Cold
- Walk-Through Transom w/Swim Platform

## Electrical

### SYSTEMS/ELECTRONICS

- 12-Volt DC Electrical System w/Breaker Panel
- 29-Hp Yanmar® Diesel Aux Engine w/Two Blade Prop
- Alternator, 60-Amp
- Battery Box, Engine Start
- Battery Box, House
- Battery Charger, 30-Amp
- Bilge Pump, Electric, Automatic
- Engine Panel, Deluxe w/Alarms and Hour Meter
- Fresh Water System, Pressurized, Hot and Cold
- Gauges, Tank for Fuel, Water, and Waste
- Galvanic Isolator
- MSD w/Waste Holding Tank
- Navigation Light Package
- NMMA Certification On All Systems
- Propane Gas System For Cooking
- Raymarine® ST60 Upgrade Depth Sounder w/Alarm
- Raymarine® ST60 Upgrade Knot Meter w/Log
- Shore Power System, 120 Volt with IT & Cord
- Sump Pump, Shower
- VHF Radio w/DSC and Stainless Steel Antenna

- Water Heater

## DECK/HULL

- Anchor Roller, Double Offset
- Anchor Well w/Space for Rode and Chain
- Blister Prevent Technology Hull
- Bow Pulpit, Stainless Steel
- Deck Handrails, Stainless Steel
- Dorade Vent
- Fold-Down Transom Swim Platform
- Hatches, Opening Deck, w/Screens
- HKT Kevlar® Hull Reinforcement
- Hull, FRP/Balsa Sandwich Above Waterline, Solid FRP bottom
- Hull, Structural Grid Reinforcement
- Keel, Shoal Draft
- Lifelines, Double w/3 Gates and Stainless Stanchions
- LPG Tank Storage for Two Bottles
- Mooring Cleats, (6) Stainless Steel
- Nonskid Deck
- Ports, Fixed
- Ports, Opening, w/Screens
- Rubrail, Full Wrap w/Stainless Steel Insert
- Rudder, Balanced Spade, w/Stainless Steel Shaft
- Sliding Companionway Hatch
- Stern Rail Seats, Stainless Steel, w/Drink Holders

- Stainless Steel Telescoping Ladder
- Through-Bolted Hull/Deck Joint w/Full Rubrail
- Through-Hull Fittings, All Bronze Below Waterline
- Windshield Fixed Ports w/Cover

#### Additional Equipment Included

#### MARINER PACKAGE

- In-Mast Furling
  - Traveler on Arch
  - Refrigeration
  - ST60 Upgrade
  - Sony Stereo
  - 36" Folding wheel
  - Electric Anchor Windlass
  - LPG Stove w/oven
  - Teak Package A
  - Shade Package
- Raymarine e95 GPS Chartplotter
  - Raymarine ST6002 Autopilot System
  - Quiet Flush Head System
  - Bimini Top
  - Cockpit Seat
  - Teak Package Cockpit floor
  - Teak Package Cockpit table inlay
  - Dodger Custom canvas/strataglass
  - Custom Davits

---

Dinghy and 10 hp outboard available for additional cost.

## **Exclusions**

---

Owner's personal belongings.

## **Disclaimer**

---

The Company offers the details of this vessel or yacht in good faith but cannot guarantee or warrant the accuracy of this information nor warrant the condition of the vessel. A buyer should instruct his representatives, agents, or his surveyors, to investigate such details as the buyer desires validated. This vessel or yacht is offered subject to prior sale, price change, or withdrawal without notice.

# PHOTOS

2



3



4



5



6



7



8



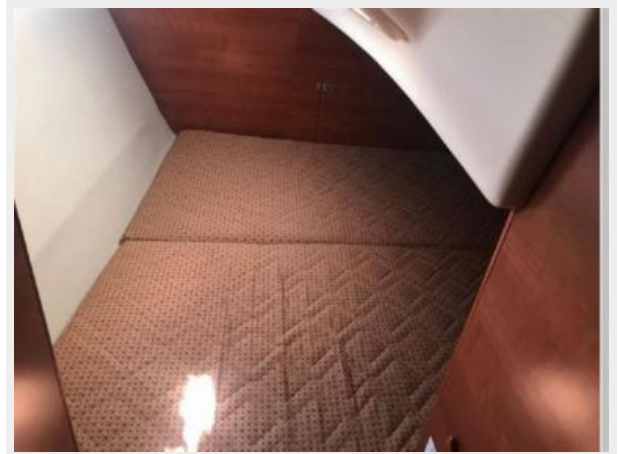
9



10



11



12



13



14



15



16



17



18



19





20



21



22



23



24



25



26



27



# CONTACTS

---

Andrey Shestakov, leading yacht broker of the sales department of Shestakov Yacht Sales Inc. Shestakov Yacht Sales Inc., the official representative of the Miami/Fort Lauderdale FL headquarters.

## Contact details

---

Email: [andrey@shestakovyachtsales.com](mailto:andrey@shestakovyachtsales.com)

Web: [shestakovyachtsales.com/en/](http://shestakovyachtsales.com/en/)

## Telephones

---

USA: +1(954)274-4435

## Office hours

---

Monday – Saturday: **9:00 - 21:00** EDT

Sunday: **closed**

## Address

---



Harbour Towne Marina, 850 NE 3rd St,  
STE 213, Dania, FL 33004