

NO NAME — NOR-TECH



Builder: NOR-TECH

Year Built: 2018

Model: High Performance

Price: PRICE ON APPLICATION

Location: United States

LOA: 39' 0" (11.89m)

Cruise Speed: 46.924717068 Kts. (54 MPH)

Max Speed: 65.17321815 Kts. (75 MPH)

Our experienced yacht broker, Andrey Shestakov, will help you choose and buy a yacht that best suits your needs **No Name — NOR-TECH** from our catalogue. Presently, at Shestakov Yacht Sales Inc., we have a wide variety of yachts available on our sale's list. We also work in close contact with all the big yacht manufacturers from all over the world.

If you would like to buy a yacht **No Name — NOR-TECH** or would like help answering any questions concerning purchasing, selling or chartering a yacht, please call **+1(954)274-4435**

TABLE OF CONTENTS

TABLE OF CONTENTS	2
SPECIFICATIONS	5
Overview	5
Basic Information	5
Dimensions	5
Speed, Capacities and Weight	5
Accommodations	5
Hull and Deck Information	5
Engine Information	5
DETAILED INFORMATION	6
2018 NOR-TECH 39 - WANT TO SAVE \$150,000 RIGHT NOW	6
2018 NOR-TECH 39 FACTORY SPECIFICATIONS W/ OPTIONS	6
Exclusions	7
Disclaimer	7
PHOTOS	8
39PORTbow6375903_20170921082813372_1_XLARGE	8
39PORTstern6375903_20170921093502021_1_XLARGE	8
39starboardBOE6375903_20170921082808925_1_XLARGE	8
resized128651.59333a513931752f5d6328f5.xl_	8
6375903_20170921083415813_1_XLARGE	8
6375903_20170921083443661_1_XLARGE	8
CCicechestSEATINGclosed6375903_20170921083003933_1_XLARGE	8
CCinterior272514_20200117093559582_25_LARGE	8
CCksecnestSEATING6375903_20170921083014213_1_XLARGE	9
CCstorage6375903_20170921083008611_1_XLARGE	9
CRUISEAIRac6375903_20170921083309917_1_XLARGE	9
DIVEdoorCLOSED6375903_20170921083055870_1_XLARGE	9
DIVEdoorOPEN2 6375903_20170921083102639_1_XLARGE	9

DIVEdoorOPEN6375903_20170921083108366_1_XLARGE	9
ENGINEcenterSTARB6375903_20170921082827921_1_XLARGE	9
ENGINES6375903_20170921082844586_1_XLARGE	9
ENGINESall46375903_20170921082822667_1_XLARGE	10
ENGINEstarboard6375903_20170921082833339_1_XLARGE	10
FORWARDseating6375903_20170921082901127_1_XLARGE	10
FORWARDseatingTWO6375903_20170921082856767_1_XLARGE	10
forwardSUNPAD6375903_20170921082910327_1_XLARGE	10
GARMINgps6375903_20170921083116696_1_XLARGE	10
garminRADARdome6375903_20170921082921861_1_XLARGE	10
GARMINvhf6375903_20170921083136883_1_XLARGE	10
hardtopFORWARDlightingBAR6375903_20170921082918690_1_XLARGE	11
HARDTOPstern6375903_20170921082945106_1_XLARGE	11
HARDTOPunder6375903_20170921082940996_1_XLARGE	11
CCentryDOORclosed6375903_20170921082949366_1_XLARGE	11
HEAD6375903_20170921083316687_1_XLARGE (1)	11
interiorQUEENone6375903_20170921083303697_1_XLARGE	11
interiosQUEENtwo6375903_20170921083258096_1_XLARGE	11
HELMbolstersUP6375903_20170921082954175_1_XLARGE	11
HELMIMG_0011	12
HELMbolstewr6375903_20170921082959140_1_XLARGE	12
HOURSIMG_0246	12
keys6375903_20170921083321551_1_XLARGE	12
NIGHTcupholders6375903_20170921083401621_1_XLARGE	12
nightHELM6375903_20170921083409648_1_XLARGE	12
TTopNIGHT6375903_20170921083406180_1_XLARGE	12
portGUNNEL6375903_20170921082936667_1_XLARGE	12
rearLEANINGpost6375903_20170921083152317_1_XLARGE	13
rigging6375903_20170921083210809_1_XLARGE	13

seadeck6375903_20170921083222499_1_XLARGE	13
seadeckSTERN6375903_20170921083205549_1_XLARGE	13
speakers6375903_20170921083240738_1_XLARGE	13
starboardGUNNEL6375903_20170921082931966_1_XLARGE	13
TRAMSOMseating6375903_20170921083031560_1_XLARGE	13
TRANSOMseating2 6375903_20170921083025360_1_XLARGE	13
TTOP[portstern6375903_20170921093503644_1_XLARGE (1)	14
TTOPport6375903_20170921093505342_1_XLARGE	14
TTOPstern6375903_20170921093503088_1_XLARGE	14
TTOPstarboardstern6375903_20170921093504786_1_XLARGE	14
NORTECH396375903_20170921093505962_1_XLARGE	14
CONTACTS	15
Contact details	15
Telephones	15
Office hours	15
Address	15

SPECIFICATIONS

Overview

AS THIS IS A TRADE VESSEL AND AS AN INVENTORY BOAT AGAINST ANOTHER PURCHASE, WE HAVE TO SELL THE BOAT TO PAY FOR REPLACEMENT VESSEL, SO WE WILL ENTERTAIN REASONABLE OFFERS. PLEASE UNDERSTAND, SINCE A NEW PURCHASE FROM THIS MANUFACTURER IS SOLD OUT UNTIL NEXT YEAR LATE 2021 DELIVERY, WE KNOW THE VALUE OF OUR TRADE AS IS, RIGHT NOW, RIGHT HERE, WITH ONLY 150-HOURS ON HER TRANSFERABLE MERCURY WARRANTIED QUAD 350 MERCURY VERADO OUTBOARDS, EXTENDED UNTIL 2022. SHE IS WORTH EVERY PENNY OF THE ASKING PRICE, BUT AS BROKERS, WE WILL LISTEN TO AS WE STATED.... REASONABLE CALLS.

Save yourself a \$150,000 right out of the gate..... TREAT YOURSELF, and take a look at this boat we bought new with her now 120-hours on her 2018 QUAD[x4] MERCURY VERADO 350 power package with MERCURY Platinum warranty until 2022. Factory model year is a 2018, no wait factory order #NTB05358, production order #37-151, **HIN#US-AOV37151F718**. This right now ready Production Order #37-151, factory order taken June 5, 2017, with an original price reduction from 2017 to 2019 model year purchase price clearly identified in the original delivered price of **\$583,355** for boat only, from our original boatyard invoice. The build sheet that can be reviewed by any serious buyer, to the take her away the right-now-steal-the-boat price of **\$439,900!** All inclusive, with the FIRM sale price that includes a 21,000-lb custom 2018 MYCO Triple Axle-Trailer, the trailer alone selling for over \$22,000 added to the package is included in the deal! This package deal reducing the sale price for boat and trailer to the take away listed price that much more. Why wait a full year and more to buy a new factory build boat and spend \$150,000 more, when this finished like new demonstrator boat is ready to hook up and drive her right now away to your home port dock...BOAT AND TRAILER IN ONE PRICE AS PICTURED!!!!:

REDUCED TODAY \$60,000, COME TO THE TABLE AND MAKE A REAL OFFER

Basic Information

Category: High Performance	Model Year: 2018	Year Built: 2018
Country: United States	Vessel Top: Hardtop	

Dimensions

LOA: 39' 0" (11.89m)

Speed, Capacities and Weight

Cruise Speed: 46.924717068 Kts. (54 MPH)	Max Speed: 65.17321815 Kts. (75 MPH)	Displacement: 12500 Pounds
Gross Tonnage: 6.25 Pounds	Water Capacity: 40 Gallons	Holding Tank: 20 Gallons
Fuel Capacity: 400 Gallons		

Accommodations

Total Berths: 1	Sleeps: 2	Total Heads: 1
------------------------	------------------	-----------------------

Hull and Deck Information

Hull Material: Fiberglass

Engine Information

Engines: 4	Manufacturer: Mercury	Model: VERADO
Engine Type: Outboard	Fuel Type: Gas	

DETAILED INFORMATION

2018 NOR-TECH 39 - WANT TO SAVE \$150,000 RIGHT NOW

Save yourself a \$150,000 right out of the gate..... TREAT YOURSELF, and take a look at this boat we bought new with her now less than 150-hours on her 2018 QUAD[x4] MERCURY VERADO 350 power package with MERCURY Platinum warranty until 2022. Factory model year is a 2018, no wait factory order #NTB05358, production order #37-151, **HIN#US-AOV37151F718**. This right now ready Production Order #37-151, taken June 5, 2017. with an original price reduction from 2017 to 2019 model year purchase price clearly identified in the original delivered price of **\$583,355** from our original boatyard invoice and build sheet that can be reviewed by any serious buyer, to the take her away YachtEZ right-now-steal-the-boat price of **\$439,900!** All inclusive, with the FIRM sale price including a 21,000-lb custom 2018 MYCO Triple Axle-Trailer, the trailer alone selling for over \$22,000, with asking price, is included in the deal! This package deal reducing the sale price for boat and trailer to the take away listed price that much more. Why wait a full year and more to buy a new factory build boat and spend \$150,000 more, when this finished like new demonstrator boat is ready to hook up and drive her right now away to your home port dock...TRAILER INCLUDED AS PICTURED!!!!:

REDUCED TODAY \$60,000, COME TO THE TABLE AND MAKE A REAL OFFER

2018 NOR-TECH 39 FACTORY SPECIFICATIONS W/ OPTIONS

HR METER – 03/12/2020

SERIAL NUMBERS: P- 2B413949/CP- 2B446859/ CS- 2B446841/ S-2B377268

FACTORY INSTALLED OPTIONAL EQUIPMENT

- WRAPPED DEEP BLUE RUBRAIL TO CHINE, LEAVING FACTORY BRIGHT WHITE GELCOAT OR PAINT OPTION FOR NEW OWNER
- FACTORY INSTALLED 7616 16" GARMIN PACKAGE
- GMR 24-MILE DOME RADAR
- 1K/w TRANSDUCER,
- AUTO-PILOT GHP-20
- MERCURY VESSEL VIEW
- QUAD MERCURY VERADO 350 X 4 OUTBOARD 4S
- MERCURY ZERO-EFFORT CONTROLS
- CC-DECK MOUNTED OVERSIZED HARDTOP FOR EASE OF FISHING W/ REAR LEGS
- ELECTRIC FLUSH TOILET W/ MACERATOR
- BLACK OAK LED LIGHT BAR HARD-TOP MOUNTED
- LUMISHORE LED UNDERWATER LIGHTS x 2 – *BLUE*
- PREMIUM SOUND SYSTEM UPGRADED AMP(STD) – SPEAKERS OVERHEAD T-TOP ,MOUNTED / 10" BOW AND AFT
- ADDITIONAL 85-GAL FUEL TANK
- BACK SEAT SLIDING COOLER W/MATCHING UPHOLSTERY
- BOW THRUSTER
- LED LITE GUNNEL MOUNTED CUPHOLDERS – *BLUE*
- FAUX-TEK FLOORING
- FAUX-TEK FLOORING SWIM PLATFORM
- PEDESTAL ELECTRIC BOW TABLE W/SUNLOUNGE
- REMOVABLE COCKPIT REAR TABLE
- REMOTE SPOTLIGHT
- SEADEK DIAMOND W/BOW TABLE UPGRADE
- TELESCOPIC DIVE LADDER
- WINDLASS ANCHOR & CHAIN W/ BOW ANCHOR LOCKER
- 12V CENTER CONSOLE INTERIOR AIR-CONDITIONING SYSTEM WITH INVERTER & OWN INDEPENDENT BATTERY BANK

2018 NOR-TECH STANDARD EQUIPMENT

MODEL YEAR: 2018

- 2-FLUSH STAINLESS STEEL FUEL FILLS & VENTS
- 300-GALLON FUEL TANK
- 4-BLACK FENDERS & COVERS
- 6-BLACK DOCK LINES
- 8-PULL-UP CLEATS

- AUTOMATIC BILGE PUMPS
- BATTERY SWITCHES
- DEEP CYCLE BATTERIES W/CUSTOM HD BOXES
- USCG SAFETY KIT
- AIR HORN
- FRESH WATER TRANSOM SHOWER
- RECESSED ANCHOR LOCKER
- SINK
- HIGH GLOSS BRIGHT WHITE GELCOAT [IN THIS CASE, WRAPPED IN DEEP BLUE]
- SOUNDING HELM HORN
- IGNITION SAFETY STOP SWITCHES
- LED – COCKPIT LIGHTING – *BLUE*
- LED – CUP HOLDERS – *BLUE*
- LED RUNNING LIGHTS
- STAINLESS BOW & STERN EYES
- STAINLESS RUBRAIL
- NEW BATTERIES

Exclusions

Owner's personal belongings.

Disclaimer

The Company offers the details of this vessel or yacht in good faith but cannot guarantee or warrant the accuracy of this information nor warrant the condition of the vessel. A buyer should instruct his representatives, agents, or his surveyors, to investigate such details as the buyer desires validated. This vessel or yacht is offered subject to prior sale, price change, or withdrawal without notice.

PHOTOS

39PORTbow6375903_20170921082813372_1_XLARGE



39PORTstern6375903_20170921093502021_1_XLARGE



39starboardBOE6375903_20170921082808925_1_XLARGE



resized128651.59333a513931752f5d6328f5.xl_



6375903_20170921083415813_1_XLARGE



6375903_20170921083443661_1_XLARGE



CCicechestSEATINGclosed6375903_20170921083003933_1_XLARGE



CCinterior272514_20200117093559582_25_LARGE



CCksecnestSEATING6375903_20170921083014213_1_XLARGE



CCstorage6375903_20170921083008611_1_XLARGE



CRUISEAIRac6375903_20170921083309917_1_XLARGE



DIVEdoorCLOSED6375903_20170921083055870_1_XLARGE



DIVEdoorOPEN2 6375903_20170921083102639_1_XLARGE



DIVEdoorOPEN6375903_20170921083108366_1_XLARGE



ENGINEcenterSTARB6375903_20170921082827921_1_XLARGE



ENGINES6375903_20170921082844586_1_XLARGE



ENGINESall46375903_20170921082822667_1_XLARGE



ENGINEstarboard6375903_20170921082833339_1_XLARGE



FORWARDseating6375903_20170921082901127_1_XLARGE



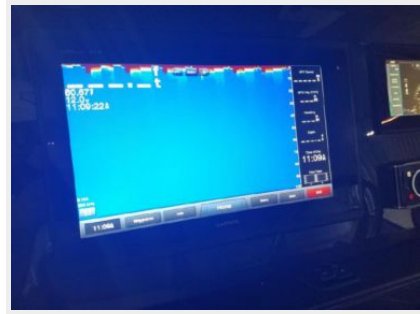
FORWARDseatingTWO6375903_20170921082856767_1_XLARGE



forwardSUNPAD6375903_20170921082910327_1_XLARGE



GARMINgps6375903_20170921083116696_1_XLARGE



garminRADARdome6375903_20170921082921861_1_XLARGE



GARMINvhf6375903_20170921083136883_1_XLARGE



hardtopFORWARDlightingBAR6375903_20170921082918690_1_XLARGE HARDTOPstern6375903_20170921082945106_1_XLARGE



HARDTOPunder6375903_20170921082940996_1_XLARGE

CCentryDOORclosed6375903_20170921082949366_1_XLARGE



HEAD6375903_20170921083316687_1_XLARGE (1)

interiorQUEENone6375903_20170921083303697_1_XLARGE



interiosQUEENtwo6375903_20170921083258096_1_XLARGE

HELMbolstersUP6375903_20170921082954175_1_XLARGE



HELMIMG_0011

HELMbolstewr6375903_20170921082959140_1_XLARGE



HOURSIMG_0246



keys6375903_20170921083321551_1_XLARGE



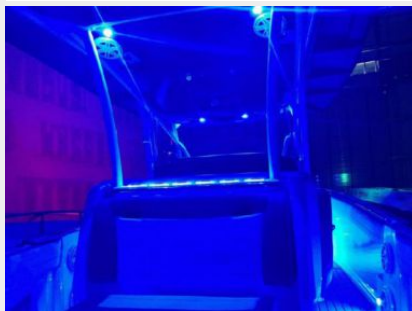
NIGHTcupholders6375903_20170921083401621_1_XLARGE



nightHELM6375903_20170921083409648_1_XLARGE



TTopNIGHT6375903_20170921083406180_1_XLARGE



portGUNNEL6375903_20170921082936667_1_XLARGE



rearLEANINGpost6375903_20170921083152317_1_XLARGE



rigging6375903_20170921083210809_1_XLARGE



seadeck6375903_20170921083222499_1_XLARGE



seadeckSTERN6375903_20170921083205549_1_XLARGE



speakers6375903_20170921083240738_1_XLARGE



starboardGUNNEL6375903_20170921082931966_1_XLARGE



TRANSOMseating6375903_20170921083031560_1_XLARGE



TRANSOMseating2 6375903_20170921083025360_1_XLARGE



TTOP[portstern6375903_20170921093503644_1_XLARGE (1)



TTOPport6375903_20170921093505342_1_XLARGE



TTOPstern6375903_20170921093503088_1_XLARGE



TTOPstarboardstern6375903_20170921093504786_1_XLARGE



NORTECH396375903_20170921093505962_1_XLARGE



CONTACTS

Andrey Shestakov, leading yacht broker of the sales department of Shestakov Yacht Sales Inc. Shestakov Yacht Sales Inc., the official representative of the Miami/Fort Lauderdale FL headquarters.

Contact details

Email:
andrey@shestakovyachtsales.com

Web: shestakovyachtsales.com/en/

Telephones

USA: **+1(954)274-4435**

Office hours

Monday – Saturday: **9:00 - 21:00 EDT**

Sunday: **closed**

Address



Harbour Towne Marina, 850 NE 3rd St,
STE 213, Dania, FL 33004