

ON TARGET — HATTERAS



Судостроитель: HATTERAS

Год постройки: 2006

Модель: Sport Yacht

Цена: **ЦЕНА ЯХТЫ ПО ЗАПРОСУ**

Местонахождение: United States

Длина общая: 64' 0" (19.51m)

Ширина: 19' 6" (5.94m)

Макс. осадка: 4' 10" (1.47m)

Крейс. скорость: 28.676215986 Kts. (33 MPH)

Макс. скорость: 31.283144712 Kts. (36 MPH)

Купить **ON TARGET — HATTERAS** а также выбрать подходящую вам яхту из нашего каталога яхт вам поможет опытный яхтенный брокер Андрей Шестаков. На сегодняшний день компания **Shestakov Yacht Sales Inc.** имеет большое количество яхт в собственном списке продаж, а также тесно сотрудничает со всеми крупными яхтенными производителями по всему миру.

Для того чтобы купить яхту **ON TARGET — HATTERAS** а также проконсультироваться по любому вопросу связанному с покупкой, продажей, чартером яхт позвоните по телефону **+7(918)465-66-44**.

ОГЛАВЛЕНИЕ

ОГЛАВЛЕНИЕ	2
ХАРАКТЕРИСТИКИ	8
Обзор	8
Основная информация	8
Размеры	8
Скорость, вместимость и масса	9
Размещение	9
Корпус и палуба	9
Информация о двигателе	9
ПОДРОБНОЕ ОПИСАНИЕ	10
Upgrades/ Updates	10
Main Salon	10
Galley/ Dinette	11
Full Beam Master	11
Master Head Ensuite	11
VIP Guest Stateroom	12
Port Guest Stateroom	12
Two Guest Heads	12
Lower Companionway	13
Cockpit	13
Flybridge	13
Electrical Systems	14
Engine Room and Blge	14
Hardware and Misc.	15
Exterior Finish/ Construction	16
helm and Navigation	16
Custom Factory Options	17
Disclaimer	17

Исключения	17
Отказ от ответственности	17
ФОТОГРАФИИ	19
2	19
3	19
4	19
5	19
6	19
7	19
8	20
9	20
10	20
11	20
12	20
13	20
14	21
15	21
16	21
17	21
19	21
18	21
21	22
20	22
22	22
23	22
24	23
25	23
26	23
27	23

29	24
28	24
30	24
31	24
32	24
33	24
34	25
35	25
36	25
37	25
38	25
39	25
40	26
41	26
42	26
43	26
44	26
45	26
46	27
47	27
48	27
49	27
50	27
51	27
52	28
53	28
54	28
55	28
57	28

56	28
58	29
59	29
60	29
61	29
62	29
63	29
65	30
64	30
66	30
67	30
68	30
69	30
70	31
71	31
72	31
73	31
74	31
75	31
77	32
76	32
78	32
79	32
80	32
81	32
82	33
83	33
85	33
84	33

86	33
87	33
88	34
89	34
90	34
91	34
93	34
92	34
94	35
95	35
96	35
97	35
99	35
98	35
101	36
100	36
103	36
102	36
104	36
105	36
106	37
107	37
108	37
109	37
110	37
111	37
112	38
113	38
114	38

КОНТАКТЫ	39
-----	-----
Контактная информация	39
-----	-----
Телефоны	39
-----	-----
Время работы	39
-----	-----
Адрес	39
-----	-----

ХАРАКТЕРИСТИКИ

Обзор

Excellent CONDITION!

On Target is ready to go. Owner moving up .Maintained and Upgraded .

- Extremely Clean and Crisp Throughout
- Rebuilt Engines (2016), Updated Aftercoolers (2018), Only 1205 Hours on Mains
- Soft Goods Refit (2017) Twin Onan 27.5 with 1315 hours
- Updated Nav Electronics (2018)
- Watermaker, serviced 2020
- Hydraulic Outriggers
- Ice Chipper serviced 2020
- Fighting Chair
- Teak cockpit
- Mezzanine Seating
- Flybridge A/C
- Twin Generators port 1314 2nd Generator 27.5 1248 Hours
- LED Lighting
- Underwater lights Multicolors

Основная информация

Тип судна: Sport Yacht

Подкатегория: Convertible

Модельный год: 2006

Год постройки: 2006

Страна: United States

Размеры

Длина общая: 64' 0" (19.51m)

Длина по ватерлинии: 55' 11" (17.04m)

Ширина: 19' 6" (5.94m)

Макс. осадка: 4' 10" (1.47m)

Трапы: 15' 3" (4.65m)

Скорость, вместимость и масса

Крейс. скорость: 28.676215986 Kts. (33 MPH)

Макс. скорость: 31.283144712 Kts. (36 MPH)

Вместимость воды: 343 Gallons

Вместимость сточного бака: 105 Gallons

Объем топливного бака: 1950 Gallons

Размещение

Всего кают: 3

Всего ком. состава: 3

Корпус и палуба

Материал корпуса: Fiberglass

Информация о двигателе

Двигатели: 2

Производитель: Caterpillar

Модель: C-32A

Тип двигателя: Inboard

Тип топлива: Diesel

ПОДРОБНОЕ ОПИСАНИЕ

Upgrades/ Updates

On Target is owned by a very meticulous owner and has always had top level maintenance program to keep the mechanical and cosmetic conditions excellent at all times. The Bottom was Painted and serviced in Motors, Generators , Ice chipper ,Watermaker all serviced in March 2020. Owner Moving up .

Both CAT C-32A Engines Rebuilt in November 2016 by CAT dealer

- Both CAT C-32A Engines Aftercoolers Replaced March 2018 (good for 6 years, till 2024)
- FCI 1800GPD Watermaker Fully Serviced 2020 (1205 hours)Full Bottom Job November 2020
- Interior and Exterior Soft Goods Refit June 2017 by Decorator Interior Lights Upgraded to LEDInterior Carpeting Replaced with Amtico Flooring Throughout New Flybridge Enclosure August 2016
- New Custom Stidd Captains Chairs August 2016
- Hydraulic Outriggers
- (4) New KEP Touchscreen Monitors at Helm
- 2016 Custom Built Drawers in Galley to Maximize Storage LED Engine Room Lighting
- Garmin 8400 Black Box to Interface with KEP Monitors
- Eskimo Ice Chipper Custom Freshwater Filtration System for Drinking Water
- Tracvision M5 SAT TV Dome and HD Salon TV 2016
- Teak Fighting Chair in Cockpit
- Teak Flooring and Coaming Boards in Cockpit and Mezzanine
- Certified Life raft 2020

Main Salon

Amazing space in this Sportfish with satin finish, Great condition inside and out,

She has removable upholstered headliner with wood bulkheads, cabinetry and trim with a polyester satin finish. Fluted wood valances with duette blinds and Frameless windows with tinted safety glass. To starboard is a whirlpool Ice maker, dimmable lights, Ac duplex outlets

- Electric panels
- Boston Acoustics 5.1 surround-sound speakers
- Entertainment center including 42" LED TV with omni-directional antenna, AM/FM "surround sound" stereo receiver with DVD/CD player and one-touch RF remote control system
- L-shaped lounge with rod storage, loose cushions, arm rests and double needle stitching
- Polished stainless-steel threshold at salon door

- Air conditioning dispersed through fluted wood valances, port and starboard
- Sliding full glass door to cockpit, concealed by wood bulkhead when open

Galley/ Dinette

Granite counters, sub refrigerator drawers in galley fascia, (2) in upper cabinets behind doors• Genuine wood inserts to match interior finish on appliance fascia, Amtico vinyl-strip flooring

• Removable upholstered headliner• Fluted wood valances with duette blinds• Fixed frameless windows with dark tinted safety glass• Solid-surface countertops, under-mount sink and storage cabinets made of genuine wood to match interior finish• AC under-counter refrigerator and freezer drawer units• AC four burner ceramic cooktop• Microwave/convection oven covered by cabinet door• One-half hp continuous feed garbage disposal• Dinette with storage under seat• AC and DC light fixtures• AC dimmable lights• AC duplex outlets• Throw pillows• Telephone outlet• Vacuum unit, one outlet• Air conditioning dispersed through fluted valances, port and starboard

Full Beam Master

As you walk into the master stateroom it is the largest one in its class.

• Wood cabinetry and trim with satin polyester finish• Fluted wood valance• Padded covering on hullside• Door to stateroom• King-sized tapered berth with upholstered headboard• Upholstered berth base• Polyfoam mattress, spread, throw pillows, pillows, pillow shams, mattress pad and sheets (E) • Cedar-lined hanging locker with doors and automatic light• Nightstands with drawers• Twin dressers with drawers• AC and DC light fixtures• AC dimmable lights• AC duplex outlets• 20" LCD TV with MATV outlet• AM/FM audio access with local DVD/CD changer and a one-touch master universalremote with RF control• Boston Acoustics loudspeakers• Telephone outlet• Full-length mirror• Clear plexi-mirror (aft bulkhead)• Private access to head with door stop• Carbon monoxide detector• Air conditioning dispersed through fluted valances, port and starboard• Smoke detector• DC low-voltage lights under berth• SMX HVAC compartment controlled

Master Head Ensuite

Amtico vinyl-strip flooring• Removable upholstered headliner• Wallcovering• Solid-surface countertops with solid-surface backsplash, sidesplash and integral sink over storage cabinet made of genuine wood to match interior finish with bowed fronts• Linen storage• Hardwood base boards• Stall shower with molded seat, single door and automatic enclosed sump pump• Storage cabinet with mirror above sink• Towel bar• Headhunter freshwater toilet

VIP Guest Stateroom

Island queen with satin accents.

- Wallcovering• Wood cabinetry and trim with polyester satin finish• Queen-sized tapered berth with upholstered headboard and cedar lined storage underneath accessed via pneumatic cylinders• Upholstered berth base• Polyfoam mattress, spread, throw pillows, pillows, pillow shams, mattress pad and sheets (E)• Dressers port and starboard• Cedar-lined hanging lockers with automatic light• Upper port and starboard hull side cabinets, optional• Screened overhead hatch with privacy cover• Nightstands with storage, port and starboard• AC and DC light fixtures• AC lights• AC duplex outlets• Full-length mirror• Carbon monoxide detector• Audio system control, LCD keypad and a pair of Boston Acoustics loudspeakers• Clear plexi-mirror (forward bulkhead)• Private access to head with door stop• Smoke detector• DC low-voltage lights under berth• SMX HVAC compartment controlled

Port Guest Stateroom

- Removable upholstered headliner• Wallcovering• Wood cabinetry and trim with polyester satin finish• Twin berths with storage underneath• Upholstered berth base• Polyfoam mattresses, spreads, throw pillows, pillows, pillow shams, mattress pads and sheets (E)• Cedar-lined hanging locker with door and automatic light• Overhead cabinets outboard, port stateroom• Carbon monoxide detector• Full-length mirror• AC and DC light fixtures
- AC duplex outlets• Audio system control, LCD keypad and a pair of Boston Acoustics loudspeakers • Private access to head with door stop• Smoke detector• Plexi-mirror, aft bulkhead• Pocket doors• SMX HVAC compartment controlled

Two Guest Heads

Amisco vinyl-strip flooring

- Removable upholstered headliner• Wallcovering• Upper storage cabinet with mirror• Solid-surface countertops with solid-surface backsplash, side splash and integral sink over storage cabinet made of genuine wood to match interior finish with bowed fronts• Stall shower with door, seat and automatic enclosed sump pump• Screened overhead hatch with privacy cover• Towel bar• Headhunter freshwater toilet• 120-volt AC air freshener blower• AC and DC light fixtures• AC dimmable lights• AC duplex outlet• Plexi-mirror around upper cabinet• Hardwood base boards• DC low-voltage lights under toe kicks• Linen storage• Holding tank 3/4 full indicator light

Lower Companionway

The lower companionway allows access to staterooms and Fullsize washer dryer.

- Removable upholstered headliner• Wallcovering• DC light fixtures• Flush-panel genuine wood doors to match interior finish with door stops to master stateroom, guest stateroom and guest head• Steps to salon with storage underneath• Washer/dryer

Cockpit

Molded fiberglass, 164 square feet including 17 square feet of seating • Seating with cushions across upper mezzanine• ISO scuppers• Polished anodized aluminum ladder to flybridge with acrylic steps

- Transom door• Two 50-amp shoreline retractable shore cords with remote• Seawater and freshwater wash down outlets with Hatteras patented quick disconnect• Shore water connections with pressure reducing valve and Hatteras patented quick disconnect, one each port and starboard• Two tackle drawers with perforated stainless-steel bottom, covered by cabinet door, starboard mezzanine• 10-cubic-foot bait freezer, port mezzanine• Two 14-gallon storage tubs• Two 62" fish boxes with macerator, flush in deck, hinged with gas cylinders• Molded-in transom fish box with drain• Door and hatch with lock to engine compartment• Storage in steps to deckhouse with chill box in top step• Lazarette access through hatch• Sliding glass door to deckhouse• Fiberglass cockpit boarding step box with storage• DC overhead lights under flybridge overhang• Aluminum mounting plate laminated in deck for fighting chair• Telephone/CATV inlets• Polished stainless-steel rod holders, flush mount, set of 4

Flybridge

- 186-square-foot boat deck
- Systems monitor with visual and audible signals for engines and gears, steering cooling pump, high bilge water, fire warning in engine compartment, fire extinguisher discharge, and AC power loss.
- Molded fiberglass
- Top-loading insulated drink box under aft-facing seat
- U-shaped lounge with removable vinyl-covered polyfoam cushions and storage underneath
- Rod storage in forward bench seat
- Additional storage areas beneath U-shaped seat and console
- Neutral interlock switches allowing engine to start in neutral only,

- Polished anodized welded aluminum rails and stanchions
- Powder-coated grab rails
- Control station with all necessary switches and dimmable lighted instrument panel
- Engine synchronization control
- Compass with dimmable light, located on pod console
- Teak Pod console with custom wheel and single-lever clutch and throttle controls(electronic) with emergency back-up and electric trolling valve control switch
- Hydraulic power-assisted steering
- Twin Stidd adjustable teak helm chairs with stainless-steel hardware and footrest, and backing plate
- AC weatherproof receptacle
- Electric fuel level gauges
- 24-volt DC distribution panel
- Power-actuated electronics console

Electrical Systems

- Two 24-volt banks of heavy-duty, 12-volt marine batteries mounted in fire-retardant fiberglass boxes• Gel/lead acid compatible 240-volt automatic/programmable battery charger, 50/60 Hz
- Automatic battery paralleling system with switch at control console• Two 240-volt, 50-amp, transformer connected retractable shore cords with over-current protection, one each port and starboard• AC and DC light fixtures• AC dimmable lights in master and salon/galley• AC duplex outlets with ground fault protection• Battery control panels with fuses and isolation switches• DC distribution panel with magnetic circuit breakers• DC distribution panel with magnetic circuit breakers (engine compartment)• DC electronics panel with magnetic circuit breakers (bridge)• AC distribution panel with magnetic circuit breakers• AC switching panel with source selector switches, volt meter, ammeter, frequency meters, generator start/stop controls, interlock selector breakers and voltage boost switch• Systems monitor with programmable logic controller readout, visual and audible signals for engine, alternator, high bilge water, fire warning in engine compartment, fire extinguisher discharge, AC power loss, smoke detectors, battery voltage, 3/4 full holding tank monitor, and carbon monoxide detectors• Ground fault protection on AC receptacles and lighting circuits• Navigation lights• Telephone/CATV inlet• Telephone and CATV shoreline cords, one each• U.L. 1426 listed boat cable, tin-coated with insulation• Ventilation fans in attic space

Engine Room and Blge

- Twin Caterpillar C32-A 1800hp, freshwater-cooled main engines with electrically controlled

marine gears, neutral interlocks, exhaust silencers, engine hour meters, alternators, fuel filters and seawater strainers Rebuilt in 2016 , Serviced in 2020

- Two 27.5kW freshwater-cooled Electronic Quiet Diesel Onan generator(D) with shockmounts, seawater strainer, remote start, fuel/water separator, hour meter, water lift muffler and sound enclosure Serviced 2020
- Variable-speed forced air system for engine combustion air with two 16" vaneaxial fans ducted to cockpit and controlled by pressure and temperature (single fan reversible for flow-through ventilation)
- Polyethylene water lines
- FM200 fixed fire extinguishing system for engine compartment with automatic and remote manual controls, plus audible and visual discharge signals
- Pressurized 230-volt AC freshwater pump with central charcoal freshwater filter and back-flush capabilities
- 230-volt AC 30-gallon electric water heater
- Freshwater fill hose for engines and generator
- 24-volt DC bilge and sump pumps: three at 3700 gph, two at 3800 gph, four at 2000gph, with heavy-duty float switches and protective guards
- Auxiliary emergency bilge pump, 150 gpm in lazarette
- Bronze/chrome-plated ball-valves through bolted in solid fiberglass on all underwater through-hull fittings with electrical bonding throughout
- AC compressed air system with air line and regulator
- U.L. Marine-listed fiberglass fuel tanks constructed with fire-retardant resin and bronze-fittings, and coated with fire-retardant paint
- Fiberglass holding tanks with bronze fittings
- Fiberglass water tanks, constructed with bronze fittings and materials which comply with the requirements of Title 21 for food and drugs
- Sewage holding tank with 24-volt DC sewage pump, plumbed for dockside pump-out, with 3/4 full display and alarm as part of PC monitoring programmable logic controller
- U.L. Marine-listed fuel filter/water separator, generator
- U.L. Marine-listed duplex fuel filters/water separators with bypass manifold, engines
- Digital monitoring for main engines in battery panel with start and stop switches
- 110-volt AC reversible oil changing system for engines, gear and generator with Hatteras patented quick disconnect
- Electric fuel priming pumps, engines
- Electric fuel transfer system with three pumps, providing back-up capability, with filtration and dry tank protection for pump
- United States Coast Guard type A1 U.L. Marine-listed fuel lines
- Seawater pressure system with AC pump
- Air conditioning compressors and pumps
- Powder-coated grab rails
- Painted polyurethane engine room and bilges
- Rubber deck mat between engines
- Isolated discharge sea chest
- Transducer well, glycol filled
- Sealed shower sump, one each
- Pultruded fiberglass rudder shelf
- 1" stainless-steel steering tie bar with pivoting self-aligning ball joint connection at all cylinder and tie bar connections
- Insulation in deck
- Pick-up sea chests water manifold with centralized shut-off valve for sinks and showers
- AC fluorescent lights

Hardware and Misc.

Wood bulkheads, cabinetry and trim with a polyester satin finish

- All hardware polished chrome with brushed chrome in galley
- Fiberglass pulpit with welded and polished stainless-steel anchor chute and roller
- 60-pound Danforth anchor, anchor line and deck hawse pipe with anchor tensioner
- Anchor locker bow deck
- Two polished stainless-steel stern cleats and hawse pipes, through-bolted in aluminum backing plate
- Four polished stainless-steel springline cleats with

chafing strips, through-bolted in aluminum backing plate• Polished stainless-steel bow cleats and chocks with chafing strips, through-bolted in aluminum backing plate• Polished anodized welded aluminum rails on bow, side deck and flybridge, drilled and tapped in aluminum backing plates• Powder-coated grab rails on cabin side and flybridge• Polished anodized welded aluminum flybridge ladder with acrylic steps• Zincs on rudders and shafts• Dual air horns• Stainless-steel trim tabs• Manganese bronze struts• Stainless-steel rudders with zincs• 7-blade propellers, Nibral high performance• Alloy 22 high-strength propeller shafts, 3 1/2", with zincs• Manganese bronze dripless rudder seals with thrust bearing on rudder shaft• Bow deck access to rope storage locker• Deck plates for fuel and water fills and waste pump out• Heavy-duty bronze engine couplings• Generator exhaust, water separator• Dripless shaft seals with spare seals

Exterior Finish/ Construction

Isophthalic gelcoat, exterior layer

- Blister-resistant vinylester resin in hull bottom skin coat• Hull and superstructure linear polyester/ polyurethane coating• Polymer/copper-based anti-fouling bottom paint• Boot stripe, linear polyester/polyurethane coating• Decks, non-skid surface, polyurethane paint with polymeric beads
- Solid fiberglass hull bottom• Hull sides and superstructure laminated with PVC foam core• Fiberglass stringers• Steel laminated in stringers at key locations to bolt engine mounts• Engine room bulkheads and decks of resin-infused composite construction using PVC foam core with layers of fiberglass laminate on each side

helm and Navigation

- Hatteras Shipboard Management Dual Drive Leviathan Computer System Garmin 8400 Black Box(4) 15" KEP Touchscreen Multi-Function Display
- (2) Caterpillar Digital Engine Diagnostic Displays Cameras in Engine Room and Salon
- Furuno NavNet Black Box
- Big Bay Tower PC Pro w/Nobletech Chartplotter Software
- Furuno 6' Open Array Radar, Furuno 4' Open Array Radar
- Furuno TZ Touch Chirp Transducer
- Simrad Autopilot AP26
- (2) ICOM VHF IC-M604
- ACR Remote Spotlight

- Bow Thruster Control

Custom Factory Options

The Following are options ON TARGET came equipped with out of the Hatteras Factory when built new per the Hatteras Yachts original build sheet:

- Engine Selection CAT C-32A 1800HP
- Cherry High Gloss Wood Selection Throughout
- Port Cockpit Fish box in-Deck Can Also Function as Livewell if Needed Lift Up
- Coaming Dive door or Gate at Transom Access Door
- Air Conditioning Blowers on Flybridge
- Cockpit Coaming Lights
- Additional 27KW Generator, for total of (2) 27Kw Generators Aboard Cockpit Hand
- Shower, Hot/Cold
- Plexi Mirrored Ceiling in All Heads
- Eskimo Ice Machine in Cockpit
- Install Thru-Hulls for Later Watermaker Installation
- Backup Freshwater AC Pump
- Third Sub-Zero Unit in Galley- 1 Refrigerator and 1 Freezer, Drawers Pompanette
- Wing Board Rod Holders, 4 on Each Side
- Plumb and Wire for Backup Air Conditioning Raw Water Pump
- Bow Thruster

Disclaimer

The Company offers the details of this vessel in good faith but cannot guarantee or warrant the accuracy of this information nor warrant the condition of the vessel. A buyer should instruct his agents, or his surveyors, to investigate such details as the buyer desires validated. Hours listed may vary from actual hours due to recent use. Purchaser is encouraged to verify hours prior to purchase. This vessel is offered subject to prior sale, price change, or withdrawal without notice.

Исключения

При продаже яхты исключаются личные вещи владельца.

Отказ от ответственности

Компания предоставляет описание судна или яхты добросовестно, но не может гарантировать точность этой информации, а также не ручается за техническое состояние. Покупатель должен проинструктировать своих агентов или оценщиков исследовать представленную информацию более подробно, по собственному желанию. Продажа судна или яхты, изменение цены или снятие с продажи будет происходить без предварительного уведомления.

ФОТОГРАФИИ

2



3



4



5



6



7



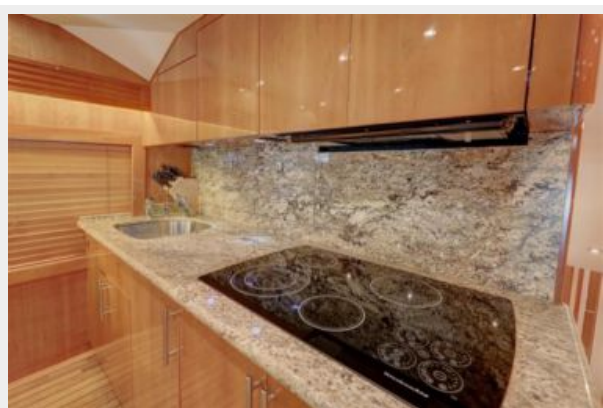
8



9



10



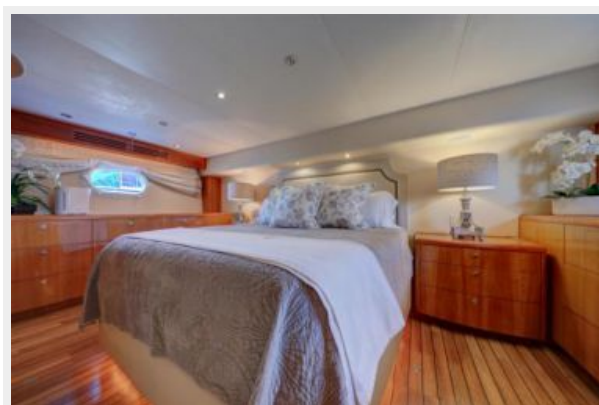
11



12



13



14



15



16



17



18



19



20



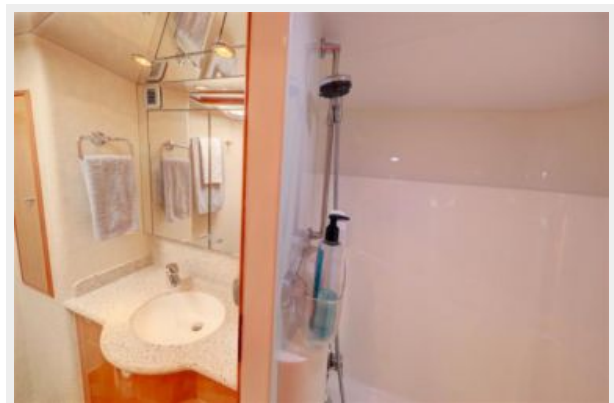
21



22



23



24



25



26



27



28



29



30



31



32



33



34



35



36



37



38



39



40



41



42



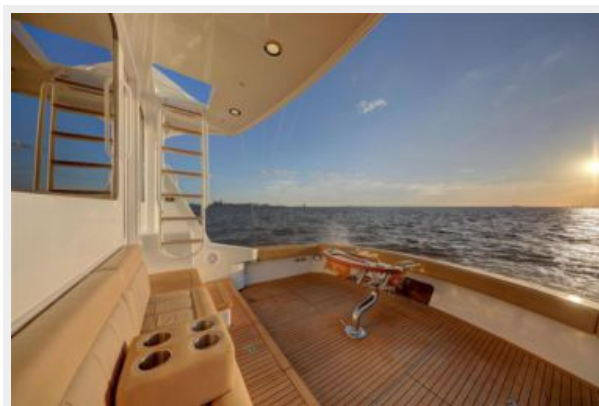
43



44



45



46



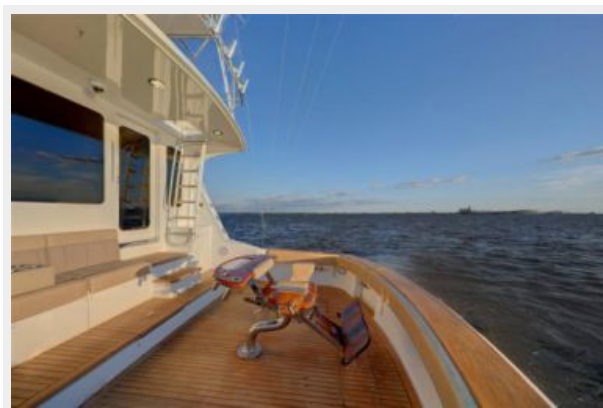
47



48



49



50



51



52



53



54



55



56



57



58



59



60



61



62



63



64



65



66



67



68



69



70



71



72



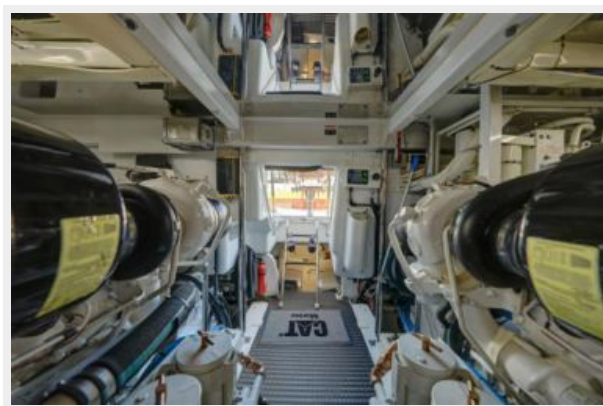
73



74



75



76



77



78



79



80



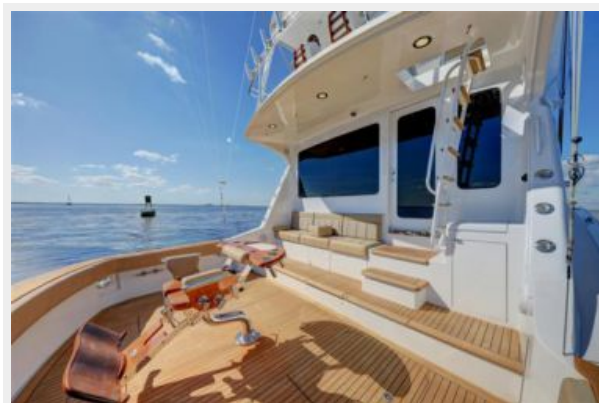
81



82



83



84



85



86



87



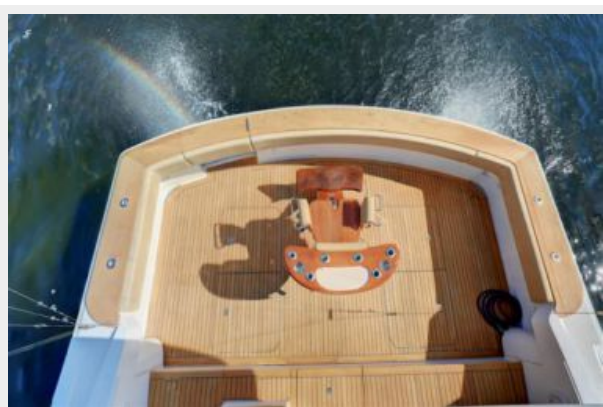
88



89



90



91



92



93



94



95



96



97



98



99



100



101



102



103



104



105



106



107



108



109



110



111



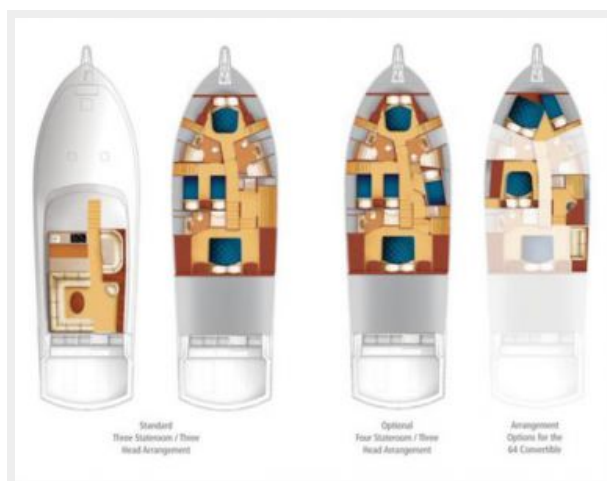
112



113



114



КОНТАКТЫ

Андрей Шестаков (Andrey Shestakov) – ведущий яхтенный брокер отдела продаж яхт и судов компании Shestakov Yacht Sales Inc. Официальный представитель Shestakov Yacht Sales Inc. для русскоговорящих клиентов в центральном офисе компании в Майами/Форт Лодердейл/Флорида/США.

Контактная информация

Email: andrey@shestakovyachtsales.com

Web: shestakovyachtsales.com

Телефоны

Краснодарский край: **+7(918)465-66-44**

США, Майами, Флорида: **+1(954)274-4435**

Время работы

Понедельник – Суббота: **9:00 - 21:00**
EDT

Воскресенье: **Закрето**

Адрес



Harbour Towne Marina, 850 NE 3rd St,
STE 213, Dania, FL 33004