

SERIES A — AZIMUT



Builder: AZIMUT

LOA: 55' 0" (16.76m)

Year Built: 2016

Beam: 15' 5" (4.70m)

Model: Motor Yacht

Max Draft: 4' 3" (1.30m)

Price: PRICE ON APPLICATION

Location: United States

Our experienced yacht broker, Andrey Shestakov, will help you choose and buy a yacht that best suits your needs **Series A — AZIMUT** from our catalogue. Presently, at Shestakov Yacht Sales Inc., we have a wide variety of yachts available on our sale's list. We also work in close contact with all the big yacht manufacturers from all over the world.

If you would like to buy a yacht **Series A — AZIMUT** or would like help answering any questions concerning purchasing, selling or chartering a yacht, please call **+1(954)274-4435**

TABLE OF CONTENTS

TABLE OF CONTENTS	2
SPECIFICATIONS	5
Overview	5
Basic Information	5
Dimensions	5
Speed, Capacities and Weight	5
Accommodations	5
Hull and Deck Information	5
Engine Information	6
DETAILED INFORMATION	7
Options	7
Exclusions	8
Disclaimer	8
PHOTOS	10
Bow View	10
Port View	10
Aerial View of the Boat	10
Port View of the Boat	10
Port View	10
Starboard View	10
Bow Running View	11
Stern View	11
Stern View	11
Aerial View	11
Aft Deck Dining	11
Aft Deck Dining	11
Aft Deck Dining	12
Side View	12

Bow Seating	12
Bow Lounge	12
Aft Deck Grill	12
Aft Docking Station	12
Salon	13
Salon	13
Salon Dining	13
Interior TV	13
Galley	13
Galley	13
VIP Stateroom	14
VIP Stateroom	14
VIP Stateroom	14
Master Stateroom	14
Master Stateroom	14
Master Stateroom	14
Master Stateroom	15
VIP Head	15
Master Stateroom	15
Guest Stateroom	15
Guest Stateroom	15
VIP Head	15
Head	16
Interior Helm	16
Interior Helm	16
Engine Room	16
Engine Room	16
CONTACTS	17
Contact details	17

Telephones	17
Office hours	17
Address	17

SPECIFICATIONS

Overview

This Azimut 55S is perfect to get out on the water in your own safe environment. Whether you are looking for a great day boat or the ability to stay onboard this Azimut 55S offers the amenities you need!

Basic Information

Category: Motor Yacht

Model Year: 2016

Year Built: 2016

Country: United States

Dimensions

LOA: 55' 0" (16.76m)

Beam: 15' 5" (4.70m)

Max Draft: 4' 3" (1.30m)

Speed, Capacities and Weight

Water Capacity: 156 Gallons

Fuel Capacity: 423 Gallons

Accommodations

Total Cabins: 3

Total Heads: 2

Hull and Deck Information

Hull Material: Fiberglass

Deck Material: Teak

Hull Configuration: Deep Vee

Hull Color: Silver

Engine Information

Engines: 3

Manufacturer: Volvo Penta

Model: DP 600

Engine Type: Inboard

Fuel Type: Diesel

DETAILED INFORMATION

Options

Base and Options

• Bow thruster• Cockpit cabinet with BBQ, icemaker and trash compartment• Cockpit docking-maneuvering station• Cockpit table (with hi-lo system and sunbathing cushions)• Co-pilot seat at main helm• Dynamic positioning system – skyhook• Electric awning for aft cockpit• Electric shade for salon sunroof• Flagpole• Hi-lo system for TV• LED lighting for exterior and interior with dimmers in salon and cockpit• Mosquito nets for portholes• One glendenning cable master• Painted hull• Raymarine Platinum Package• Raymarine T270 fixed thermal video camera• Safe in master cabin• Salon dinette conversion• Sunbathing cushions on bow• Sunroof with glass panels• Teak deck on swim platform• Teak on garage door/ second swim platform• Teak on side decks• Telescopic gangway• Two floodlights installed on aft flybridge• Washer-dryer combo unit• Wooden floor in salon, dinette and helm station• **ADVANCED PACKAGE:** o Auto dynamic trim Volvo interceptor o Closure curtain for garage o Double racor filters for main engines o Spare conduits connecting engine room/ wheelhouse/ radar arch o Electric mooring winches in cockpit o Tender hauling launching system o Miele appliances (microwave combo and cook top) o Chaincounter control at main helm o Organized additional storage in forward port side helm area o Seakeeper o Galley cabinet storage in aft side of galley o Cockpit refrigerator drawer o Forward sunpad cover o Aft bench seat cover o Table cover o Complete A/V package o Forward bench seat cover o Décor upgrading

Platform and Garage

• Tip-up platform acting as a door for garage/sundeck platform/ ramp for tender haulage• External shower on port side• Shore power socket on port side• Manual telescopic swim ladder• Aft fender holder• Courtesy light inside the garage

Cockpit

• Cockpit bench• Engine room access via cockpit bench• Teak floor• Warping stations• Fire extinguisher control with protective door• Watertight spotlights inserted in the cockpit ceiling• Flexible fender holder in cockpit bench• Locker for lines below the warping station• Storage lockers

Salon/ Dinette/ Galley

• A single room, with the galley on the starboard side• Tip-up flap in galley, to hide appliances when not in use• Microwave oven• Fridge• Freezer• C-shaped sofa with 4 seats on port side• Openable hard top• Fixed table (can be opened, with storage area in base)

Wheelhouse

• Fixed helm seat and fixed bench• Compartment for crockery under seat• Manually operated windows• Steering wheel• Wheelhouse included:o Engine controlso Miscellaneous switches (horn, navigation lights, windscreen wipers, etc)o 12V cigarette lighter socketo Raymarine easy cruising systemo Digital indicator of diesel levelo 7" volvo displayo 3 rpm indicatorso 3 engine start/stop keys

Owner's Cabin

• Located midship• Diagonal double bed with headboard on starboard side• Tip-up structure for accessing storage below• Shelf behind the bed• Vanity table with arm chairs on port side• 2 openable portholes• Rectangular hull windows• Direct access to head• Mirror in vanity table• Mirror in the wardrobe• 2- panel wardrobe with shelves behind the headboard

Owner's Head

• Located forward of the owner's cabin on the port side• Access from owner's cabin• TECMA toilet• Separate shower enclosure

VIP Cabin

• Located in the bow• Fixed double bed• 2 wall units above side windows• Wardrobe with hanger bars and shelves• Fixed panoramic windows• Rectangular hatchway leading onto forward sundeck• Direct access to VIP head

Guest Cabin

• Located on starboard side• 2 single beds, fixed• Central nightstand between the beds• Wardrobe with hanger bar and shelves• Storage under the beds• Openable round porthole

VIP/ Guest Head

• Direct access from VIP Cabin or corridor• TECMA toilet• Wall unit with 2 sliding panels above washbasin

Bow

• Anchor chain housing• Chain wash pump system with direct water jet on the chain• DELTA 25kg anchor• Sunbed and forward-facing sofa

Exclusions

Owner's personal belongings.

Disclaimer

The Company offers the details of this vessel or yacht in good faith but cannot guarantee or

warrant the accuracy of this information nor warrant the condition of the vessel. A buyer should instruct his representatives, agents, or his surveyors, to investigate such details as the buyer desires validated. This vessel or yacht is offered subject to prior sale, price change, or withdrawal without notice.

PHOTOS

Bow View



Port View



Aerial View of the Boat



Port View of the Boat



Port View



Starboard View



Bow Running View



Stern View



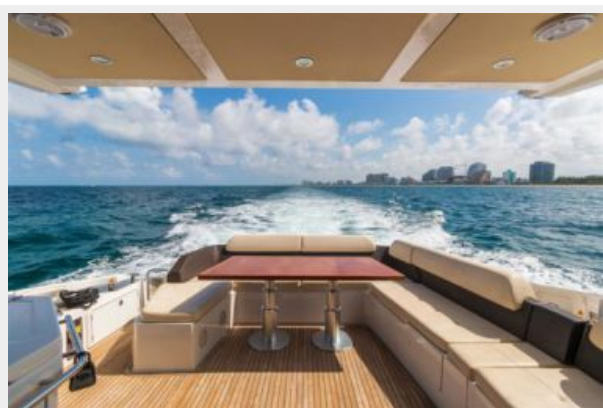
Stern View



Aerial View



Aft Deck Dining



Aft Deck Dining



Aft Deck Dining



Side View



Bow Seating



Bow Lounge



Aft Deck Grill



Aft Docking Station



Salon



Salon



Salon Dining



Interior TV



Galley



Galley



VIP Stateroom



VIP Stateroom



VIP Stateroom



Master Stateroom



Master Stateroom



Master Stateroom



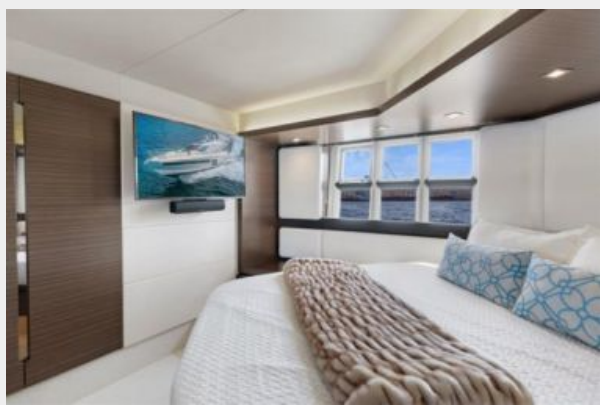
Master Stateroom



VIP Head



Master Stateroom



Guest Stateroom



Guest Stateroom



VIP Head



Head



Interior Helm



Interior Helm



Engine Room



Engine Room



CONTACTS

Andrey Shestakov, leading yacht broker of the sales department of Shestakov Yacht Sales Inc. Shestakov Yacht Sales Inc., the official representative of the Miami/Fort Lauderdale FL headquarters.

Contact details

Email:
andrey@shestakovyachtsales.com

Web: shestakovyachtsales.com/en/

Telephones

USA: **+1(954)274-4435**

Office hours

Monday – Saturday: **9:00 - 21:00 EDT**

Sunday: **closed**

Address



Harbour Towne Marina, 850 NE 3rd St,
STE 213, Dania, FL 33004